

Revolutions

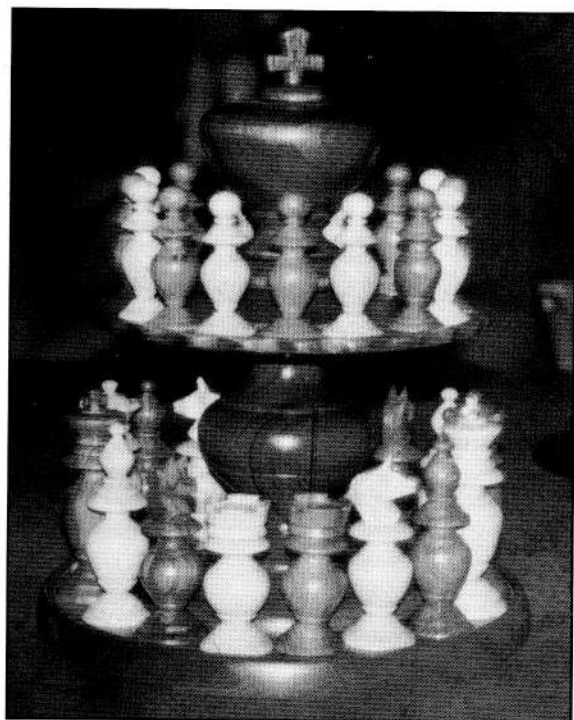
THE NEWSLETTER OF THE ASSOCIATION OF WOODTURNERS OF GREAT BRITAIN

Issue No 42

£1.95 Free to members

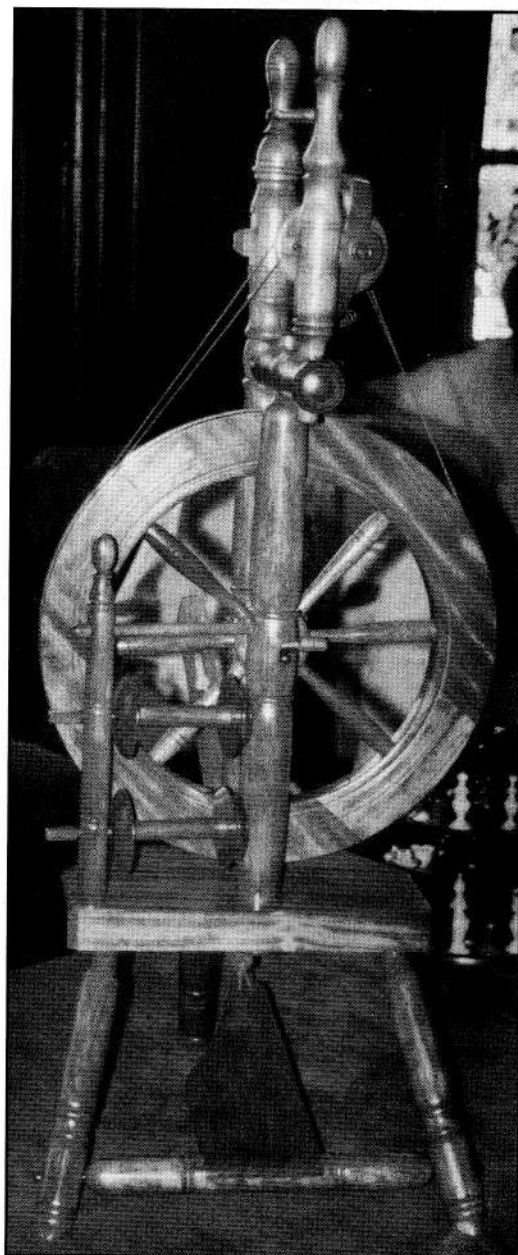
August 1997

Winners of the Worshipful Company of Turners Plain Turning Competition



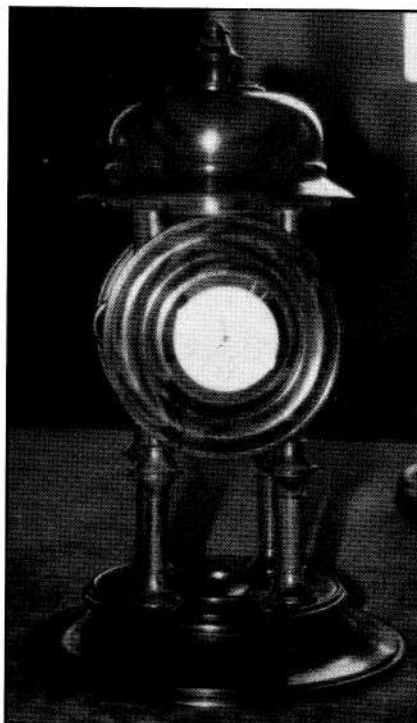
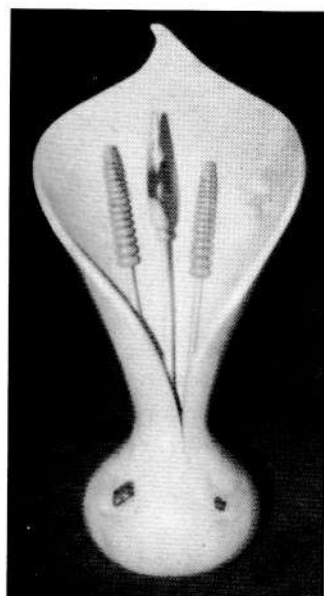
1st Patrick Blake

3rd Noel Mears



2nd Peter Coakes

*Highly Commended
Mark Hancock*





Chairmans Page(s)

I write these notes almost a week after our International Woodturning Seminar, but still I find myself suffering from exhaustion. I have decided this must be my headless chicken year, I have never known a year like it. Four trips abroad, a main presenter at four International Seminars and still a number of major demonstration engagements to fulfil. That's enough of my problems I guess, so now on to what your AWGB Committee has been up to on your behalf. A number of things remain ongoing, ever refining and trying to offer a better service to all our members.

Internet:

YES! the AWGB is now on it, **NO!** we do not have our own site.

But at no cost to the AWGB one of our members Peter Hemsley has offered us space on his site. We now have a number of pages on the site, Peter Einig our Secretary has screened and edited the information so that unwanted calls to members are not received. This offer has given us an opportunity to assess if there are any real meaningful benefits to you our members. You can rest assured before we get any more involved, we will weigh up any costs against the benefits before making a greater commitment.

If you have access to the web the URL address is, www.woodworking.co.uk/awgb which goes straight to our bit. If in doubt use www.woodworking.co.uk

Its all a bit beyond me, I am still a quill pen and smoke signals man at this time. Peter tells me around 300 visits to our site per week were being made in early June, mostly by those in the USA. We will keep you posted on future developments.

Worshipful Company of Turners Competition

The response to this competition remains less than we would hope for, the quality of some work on display was very high, there just was not enough of it. However it is pleasing to report three of the four prizes were won by AWGB members. Once more Patrick Blake was the Gold winner, I think that's three wins in a row.

We are going to work with the Worshipful Company of Turners to try and ensure a better response for the future. A tremendous amount of effort is put in to organise this event by them, but is all over in a few hours and seen by far to few people.

NVQ

This was officially launched at the Worshipful Company of Turners on July 24th, we now await developments. It will be interesting to see which colleges take it on board, who gets themselves qualified to teach and who are to be the assessors.

Loan Lathes

New Committee man Derek Phillips has taken on the role of Lathe Loan co-ordinator, if you know of someone who would benefit from a lathe on loan for twelve months please contact Derek.

We have five lathes out on loan at this time four to youngsters and one to a disabled ex-

serviceman.

The latest loans are to Neil Baldwin of Sandwell who has the Tyme Cub. Andrew Coleman a sixteen year old from our Coombe Abbey Branch was presented with a Myford ML8 at our International Seminar. This was donated to the cause by Ian LePage one of our members from Gurnsey, thanks Ian. All the lathes on loan are supplied with a basic set of tools, a chuck and drive centres etc. At times we are able to provide more as Andrew found out, GMC Publications donated Keith Rowley's book A Foundation Course. The AWGB takes great pleasure in encouraging youth and those who are less fortunate than most of us, this is an area we will continue to expand on, due to the generosity of turners, and you, our members. I will enlarge on this later.

Commission/Demonstration/Teaching Forms

If you offer any of the above services now is the time to obtain a form from Graham Lovett and get yourself registered. This information is published in the Branch Handbook which each Branch Secretary should have a copy of. We are in the process of updating this whole manual which now extends to 43 pages of information, and is set to grow.

Those members who registered their services in the past are being contacted by Peter Einig to see if they wish to continue to be registered.

Members Handbook

All **NEW** members this year have been provided with a 20 page Handbook, we are now

updating this, we expect to provide **ALL** members with this, along with the next edition of "Revolutions". Cost has been a major consideration, but due to good management we feel this is now something we can offer to you all.

Questionnaire (Non Branch Members)

Thank you to all of you who responded to Derek Phillips on this. We are digesting the findings. Positive is a word that comes to mind at this stage, 80% saying they are satisfied with our services. Our aim is to improve on this, we do listen and want this organisation to get better still. The request for a Handbook was the top request and we are responding.

New Branches

We have two new Branches formed, by our September Committee meeting we expect the formalities of Affiliation to be completed.

Our new Branch organiser George Hunter is getting the administration of the AWGB's activities in this area on a much better footing. Things should be dealt with more efficiently and smoothly than in the past. While on the subject of George I am sure you would all like to join me in wishing him well. George had to have emergency surgery while away on holiday in France recently. Due to this he missed the Seminar, George's pair of safe hands and quiet efficiency were greatly missed by the rest of the Committee.

Costs

Your committee is ever mindful of these. "Revolutions" is now being printed for considerably

Continued on Page 4

The Association of Woodturners of Great Britain

Executive Committee

Chairman

Ray Key, The Firs, 53 Weston Road, Bretforton,
Nr Evesham. WR11 5HW
Tel: 01386 830142

Vice Chairman

Chris Lindup, 38 Barry Road, Oldland Common,
Bristol, Avon. BS15 6QY Tel: 01179 325477

Treasurer

Len Grantham, Spindles, Cooper Close, Poplar Farm,
Nettleham, Lincolnshire LN2 2XX
Tel: 01522 595660

Secretary

Peter Einig, Keepers Cottage, Lee, Ellesmere,
Shropshire SY12 9AE Tel: 01691 622715

Trade & Business Liaison

Frank Clarke, 81 Knightwood Crescent, New
Malden, Surrey. KT3 5JP Tel: 0181 942 5463

Committee Member

Derek Phillips, 15 Greens Road,
Cambridge. CB4 3EF
Tel: 01223 312134

Newsletter Editor

Mike Dennis, 72 Hawes Close, Northwood,
Middlesex, HA6 1EW Tel: 01923 829844

Exhibitions Co-Ordinator

Eric Ditchfield, 8 Bloomsbury Court, St Lukes
Square, Guildford, Surrey GU1 3NQ
Tel: 01483 454226

Branch Committee Members

Branch Co-ordinator-Scotswood

George Hunter, 3 Dundas Avenue. North Berwick,
East Lothian. EH39 4PS
Tel: 01620 892293

Suffolk, Essex & Cambridge Borders

Tony Witham, 39 Horsey Road, Kirkby-le-Soken,
Frinton-on-Sea, Essex. CO13 0DZ
Tel: 01255 671697

West Midlands

Graham Lovett, 66 Beachcroft Road, Wall Heath,
Kingswinford, West Midlands DY6 0HX
Tel: 01384 277398

Worcestershire

Richard Barnes, 67 Teme Crescent, Droitwich,
Worcestershire. WR9 8UB
Tel: 01527 570128

Contents

| | |
|---|----|
| Chairmans Page | 2 |
| The Association of Woodturners of Great Britain | 3 |
| Editorial | 4 |
| CE Marking - The Facts | 5 |
| Sods Law!! | 6 |
| Secretary's Column | 6 |
| The work of Bernd Schmidt | 7 |
| Seminaire International du Tournage sur Bois | 8 |
| News from the Branches | 11 |
| More Sycamore | 13 |
| An Examination of Plagiarism | 14 |
| Woodworking Shows | 15 |

Articles, letters, tips, adverts etc featured in this Newsletter do not necessarily carry the endorsement of the Association of Woodturners of Great Britain.

DATA PROTECTION ACT

If you object to your name, address and telephone number being held on a computer belonging to the AWGB, then please write to the Secretary.
(Address Opposite)

The following woodturning videos are available for hire to members.

| | |
|--------------------------------|-----------------|
| Turning Wood | Richard Raffan |
| Turning Projects | Richard Raffan |
| Bowl Turning | Del Stubbs |
| Hollow Turning | John Jordan |
| Bowl Turning | John Jordan |
| Cutting & Sharpening | Chris Stott |
| Turning Bowls | Chris Stott |
| Turning Boxes | Chris Stott |
| Decorative Effects & Colouring | Chris Stott |
| The Basic Box | Ray Key |
| The Capsule Box | Ray Key |
| The Finial Box | Ray Key |
| A Course on Spindle Turning | Ray Jones |
| Elliptical Turning | David Springett |
| Woodturning Wizardry | David Springett |
| Colouring Wood | Jan Sanders |

Slide Packs of the 1989, 1991, 1993 Loughborough International Seminars. - Slide Pack of the Hay-on-Wye exhibition

To hire any one video or one slide pack, Please send 2 cheques one for £5 for one week's hire and one for £30 as a deposit which will be returned on the safe return of the video or slide pack.

Please make both cheques payable to AWGB.

Application for hire should be made to: George Hunter (Address Opposite)

AWGB LAPEL BADGES

(Brass & Enamel)

Send Cheque etc, to:

Frank Clarke (Address Opposite)

COST £2.50 inclusive of post and packing

MAKE ALL PAYMENTS TO AWGB

**Copy deadline for the next edition of
Revolutions**

15th October 1997

less, after a change of printers without quality loss. This along with increased advertising revenue makes us hopeful we can give all members some good news in the near future.

Membership

Growth this year has been tremendous, on August 1st membership stood at 1920 the 2000 mark should be reached very soon. I am delighted that things are on an upward swing. I predicted we would reach this figure during the year, most felt I was being a little optimistic.

Show Entrance Fees

Delighted to tell you once more we have been able to negotiate extra discounts on show entry fees for all AWGB members, for the Ascot and the NEC Woodworking shows. Details of how to obtain these appears elsewhere in "Revolutions".

Finally

I must mention our best yet AWGB International Woodturning Seminar. Without fear of contradiction it was a tremendous event and celebrated this organisations first 10 years in fine style. The Seminar has a well tried and trusted formula, add a galaxy of turning stars from around the world as your demonstrators and you should have an inspirational event to remember. That's exactly what we got without a weak link in the team.

Add to this the "Wonders in Wood" exhibition then you really have something to remember. 447 turned objects from 174 makers with a value of 55K representing some 14 countries makes for the largest and most comprehensive quality exhibition of woodturning ever seen in this country. The hiring of professional display equipment was worth every penny. I am sure I speak for the 200

delegates, plus, between 400-500 public and AWGB members who took the opportunity to view the exhibition. We are delighted that the Trade Stand holders did far better business due to this increase in numbers.

That is a very cursory overview with a few facts thrown in, I will add just a few more, my thanks go to Bert Marsh who had the most onerous job of all in selecting up to 100 objects from the work on display. 16 objects were chosen from makers from overseas representing seven countries, the other 84 were from UK makers. These 100 objects have been photographed by Tony Boase and will be published in book form. They will be on display at the Birmingham NEC International Woodworking & Turning Exhibition Oct 3rd-5th and at the Axminster Tool & Machinery Exhibition, Royal Bath & West Showground Nov 14th-16th.

The Seminar Raffle raised £1500 (£1000 in 1995) for some wonderful donated prizes from a wide range of traders. The Banquet Auction raised £2207 (£1267 in 1995) for special projects like lathe loans etc. Top prices were paid for a Hans Weissflog Saturn box £225 and a David Ellsworth hollow form £375. It was quite a night under the expert auctioning of Len Grantham, I don't know how he gets away with some of it.

Tributes

Talking of Len, on Saturday night Aug 9th 1997, for just a very short while he was left speechless, as this Association honoured his 'Outstanding contribution to the AWGB'. Len has served on the AWGB committee from Aug 1987 through to the present day, a stalwart ever present without whom it is doubtful the AWGB would have survived at one time. It gave great pleasure to

call up Wilson Howie to present a few surprises to him, (*Wilson was his minder back in 1987*) opening with a B&Q on Wednesday Membership Card. This was followed by a framed Certificate granting AWGB Life Membership. Also a Sycamore platter made by yours truly, wonderfully pyrographed by Christine Witham with the words 'To Len Grantham in recognition of outstanding service to the AWGB 1987-97'. We salute you Len no one deserves this more than you. My final thanks go to your wonderful committee who worked non stop throughout the Seminar, each and every one should get a special mention about their individual contribution but space is at a premium. The presenters without whom the event would not take place, Peter Garrison (*general help*) Dave Wright (*timber*) Gabor Lako (*on site lathe help*) plus our AWGB Stewards. It was a massive team effort.

Only a few hundred may have visited and taken part in this event but I can assure you many thousands will benefit from the weekends activities.

The magazine articles that will follow, the objects on display at the shows and through our members who go back to their Branches and share with others some of what they have learnt.

Finally, Finally

Yes, they did for me what they did for Len. Except I have an IOU on a napkin. It say's the AWGB owe me a framed certificate 'recognising your outstanding service over 10 years'.

THANK YOU.

Ray Key (AWGB Chairman)



Editorial

I start this editorial with an apology. This is for the lateness of this edition of *Revolutions*. My involvement with the Seminar prior to, and during it, took up a lot of my time. I was charged with providing as much information about the seminar and the 'Wonders in Wood' exhibition as I could. This involved the design and printing of the programmes, name badges for all the delegates, presenters, committee and traders, information cards for all of the exhibits on display, numerous notices and direction signs etc. This left me little time to concentrate on this production of *Revolutions*. I hope that it has not inconvenienced anybody.

This edition is smaller than usual because I have received very little in the way of articles from members or branches. I would like to appeal for somebody who attended the International Seminar to write an article for the next edition, preferably somebody for whom it was their first time at such an event. I have not included any items on the Seminar except the little bit that Ray wrote in his Chairmans notes. This will appear in the next, and subsequent editions.

Finally may I add my congratulations to Ray Key and Len Grantham for the honour of being granted life time membership of the AWGB for their outstanding service over the last ten years. On a personal note. I would not have survived as editor of *Revolutions* without their help and support.

Mike Dennis

CE Marking. The Facts

by Tony Caplin

As the instigator and the source of the information on the new CE regulation, in the Cumbria letter reproduced in *Revolutions*, I feel obliged to put the record straight regarding the misleading letter from Dudley Folkard in the last issue.

In June last year the John Lewis Partnership wrote to me, as one of their suppliers of lamps, requiring that all of my product shipped to them from August 96 must be CE marked and that I would have to be a member of the Lighting Association and an approved adherent of its code of practice. As I produce over 400 lamps a month I was aware of the impending regulations but not what it was going to cost in time and hard earned cash to comply with them and these new customer requirements. My lamps have always been tested, including 4,000 volt flash, continuity and resistance tested. The components have always come from a major industry supplier. This was no longer to be enough.

There are good reasons for these regulations, its not just Brussels bureaucracy. How often have you moved a lamp, radio, drill or something catching the plug or lead possibly wrenching the wires loose inside? How many of you have lamps that have brass bayonet fittings that twist round when you replace the bulb? If both the live and earth leads become free or have their insulation cut through you have a potentially deadly piece of equipment. Just before Christmas there were press reports of a child being killed from a similar occurrence. Every year hundreds of people receive shocks, in most cases little harm is done. The offending item is repaired or disposed of, hopefully not at a car boot sale. The young, the weak hearted and the wet handed could be in great danger, surely it is up to us as responsible craftsmen to ensure we do not endanger the public, not try to find ways round safety regulations.

That's the moral case, now lets look at the legal requirements.

All finished items that are supplied to the public, that are subject to EU directives, are required to carry CE marks as of January 1 1997. This is the manufacturers statement that they comply with these directives and are therefore safe. This is the law, there is no argument.

Woodturners are not above it. If you thread cable through a piece of wood, pottery or brass and fit a plug on one end and a light fitting on the other that item is subject to EU directive BS EN 60598-1: 1993 and amendment A1: 1996, that item requires a CE mark. It is up to the maker of the lamp to ensure that the product is safe, after all you can not sue the cable manufacturer in the event of an accident if the lamp was not wired correctly or tested.

A few tips.

Design your lamps to be stable when fitted with a suitable shade. I have a 15 degree wedge to place under lamps to test them.

Regulation An appliance shall not tip when subject to a 6 degree tilt.

Use heavier cable on lamps weighing over 1 Kilo. Reg. Lamps over 1 Kilo. must be fitted with cable which has a conductor cross-section of 0.75mm. those under 1 Kilo. can use 0.5mm. cable but can not have more than 2 metres of cable fitted.

Several years ago when testing a batch of 70 lamps, one failed. The nipple was projecting too far into the lampholder and had cut through the insulation. On stripping all of the lamps I found the same problem, but only one other had damaged the cable. **Regulation** - Cable must be protected from sharp edges, use plastic grommets in the nipples.

When you fit the nipples to the lamp put a little super glue on the thread, do the same when fitting the lamp-holder.

Regulation - Lamp fittings should resist 2 Newton Metres torque. If it moves when given a very hard twist its no good.

Cable clamps are available which fit into a 3/8 dia. hole inside the counter bored hole at the base of the lamp.

Regulation - Cables must be anchored, by an insulated material, to at least one part of the lamp and to be able to resist 60 Newton's of pull. Cable knotting is not permitted.

Close inspection of permitted cable will reveal either BS 6500 or <HAR> impressed into the outer insulation.

Approved plastic bayonet lamp-holders (known as Class II fittings) requiring only

twin lead will have BS 5042 moulded into them.

Plugs will have ASA and or BS 1363 moulded into them. Remember they must only have 3 amp fuses.

There does not seem to be any agreement at present on marking brass (Class I) bayonet fittings, but many have Made in UK moulded into the plastic parts and are subject to BS5042.

If you follow these tips and those in the Hertfordshire Trading Standards letter in the last *Revolutions* you should with an easy mind be able to CE mark your lamps.

The enforcement of these regulations is going to vary. Lancashire Trading Standards say they will be targeting manufacturers, so making best use of limited resources. I have noticed in a shop not a million miles from here items for sale without plugs, illegal for five years. I have spoken to LACOTS the advisory body on the interpretation and enforcement of these regulation for local Trading Standards authorities and they say that the directives are to be enforced no matter how small the craft worker is. So beware, the man in a raincoat and bowler looking at your lamps at your next craft-fair may not be a potential customer.

Having taken all of these precautions and marked your goods something may still go wrong. Make sure you have product liability insurance, this is not to be confused with public liability insurance. If you are sued in the event of an accident you could loose your business, your home and everything if the judgement goes against you. It will only cost a few pounds to add it to your normal cover.

Whilst I have made every effort to cover everything and to ensure all of the information is correct the safety of your lamps is your responsibility.

I have spoken to Nick Davidson at Craft Supplies and they will be stocking everything needed to meet these regulations, including grommets, cable clamps, CE labels etc..

Now go and check the loose wire in that router or drill, it could just happen to you.

Sods Law!!

By 'Chuck Turner'

I have often pondered the possibilities of turning small items, from the point of view that they use much less wood, storage is less of a problem, cost of wood is quite light, shavings can be put in the dustbin once a month, transport to Craft Fairs can be effected in a shopping bag. There is less expense for large lathes, huge HSS tools of all shapes and sizes. The Workshop can be easily found room for in ones garage, (probably without even moving the Car). Much less is needed by way of expensive abrasives, finishes and Polishes etc. Dust, the Wood Turners enemy is so little, there is no need for expensive extractor systems, Face Masks etc. There is less to sweep up, no expense for large black dustbin bags, shavings can be disposed of in (free) supermarket plastic bags. Small turning tools can be home made from old carpenters chisels, (not the chisels of old carpenters they may have new ones). Even Oboe nails can be ground to special shapes and "handled" for very little cost. Then there is the question of safety! But let me explain. Since Christmas last I have dropped large lumps of wood onto my feet on two occasions with resulting black and blue toes. Recently working myself into a decisive mode, I decided to get a pair of Safety Boots, Steel protected toe caps, Anti Static, Insulated Soles to 1,000 ohms, double reinforced soles, Super soft leather, Oil resistant. Another Member of our Branch advised me where these could be obtained, at much less cost than my local Safety Equipment suppliers. He was most kind and took me to buy "Dickies" "Traditional" Boots at a greatly reduced price.

I tried them on and they were obviously just what was required, and as we left the premises I remarked, "Sods Law being what it is, I will probably never drop another lump of wood on my foot again." There was little foresight in that remark. The following morning, I prepared for my morning in the workshop, washed shaved and overalls on, I sat down to put on my new boots for the first working session. The Laces eased open, tongues turned back. I picked up a Boot. My Wife rushed in. "Quick! we havent put out the Paper Collection and they are due to collect any minute". I rushed down the back garden, collected the paper sack from an old dustbin beside my workshop swung it

round and, Bang, knocked a heavy bird nesting box (which had not been put up this year) down onto my big toe. It was an appalling blow, my carpet slippers didnt afford any protection at all. By the time I got into the house the nail and toe were black as night. My Safety Boots were neatly standing in front of my armchair! Now the question is shall I sell the Boots and take up turning small items (although it will take a hundred years to turn the contents of my wood store into Lace bobbins) OR keep the boots, continue to turn Big and get a suit of Armour!! In any event, dont trust 'Sods Law', it has a funny way of changing polarity!

DEMONSTRATIONS, COMMISSIONS, TUITION.

For several years the Association has maintained lists of members who, DEMONSTRATE, undertake COMMISSIONS, and offer TUITION. These lists are published in the BRANCH HANDBOOK which every affiliated Branch has a copy of, and is a service offered by the A.W.G.B for the benefit of the general membership and of those members who are on the respective lists. It is almost impossible to measure the success of the listings, although the feedback from those who have benefitted from using the lists, either as a provider, or as a receiver, has generally been of a positive nature.

In a continuing effort to provide the best support and information to the membership the lists are in the process of being updated. Members already on the lists are to be contacted personally by letter. However, the Executive Committee of the Association do recognise that since the lists were last updated in 1994, new members have joined who may wish to offer their services in one or more of the categories, and an invitation is extended to anyone interested to request the necessary form(s)

To obtain the forms please contact Graham Lovett, 66, Beachcroft Road, Wall Heath, Kingswinford, West Midlands, DY6 OHX. (Telephone:- 01384 277398) indicating which of the listings (Demonstration, Commission or Tuition) you are interested in.

The Secretary's Column

INTERNET SITE

Ray has mentioned the web site but you may like to know that it has created at least one new member, one visitor to the Seminar from Canada and an enquiry about Branch affiliation.

The site includes information about Branches and membership and until recently the information about the International Seminar. The numbers of people visiting the site can be ascertained and even the Country that they access from. The numbers visiting or looking at the site via the Internet since May is in the thousands from people in Asia, Australia, Finland, USA and Canada.

I have had e-mail (electronic mail via the Internet) from several organisations and people, relating to woodturning, informing me of events and the availability of Houn Pine in Tasmania. This information has been passed on. Our presence has opened up a whole new area of contact for the benefit of woodturners in the UK.

DISABLED TURNING

I have received one or two items on the subject and I am still looking for more information. One piece of information which I passed on immediately is a suggestion from a turner in Kent who suggests that if Branches had a member(s) who was prepared to do some DIY tasks for others, it would be most helpful. It is always difficult to try and assess a disabled persons needs and more often than not people do not offer assistance. This may have resulted from a terse comment perhaps in the past. Branches could consider having a designated person or persons to help out all members with such tasks as putting up a shelf or making a work bench, for instance My Dad could not even hammer a nail in so it applies to a lot of people. Give it some thought. I think it is a good idea.

Peter Einig

The Work of Bernd Schmidt

Personal history

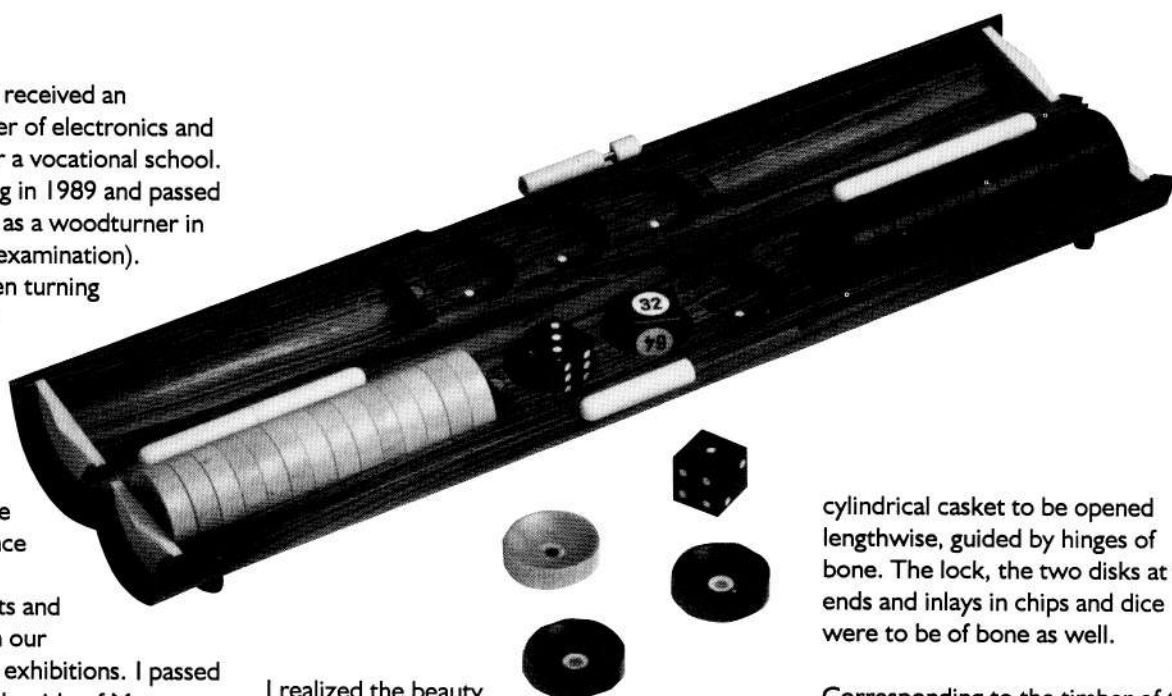
I was born in 1951. I received an education as a teacher of electronics and wood-technology for a vocational school. I started woodturning in 1989 and passed my first examination as a woodturner in 1991 (journeyman's examination). Since then I have been turning wood professionally and started, with my wife, our own studio called "drehsinn" (meaning clockwise and counterclockwise rotation) in 1994. Since then I have sold woodturning products and my wife's ceramics in our studio and at various exhibitions. I passed the examination for the title of Master-Woodturner in 1996

Cylinder-box- divided lengthways

I attended a course with Professor Gottfried Bockelmann in Hildesheim in 1995 in preparation for the examination for the title of master woodturner. He passed this examination in November 1996. One part of the examination requires the making of a master-piece that demonstrates masterly skill of the craft and mastering questions of design.

There are several sources of inspirations for my work apart from the material itself: there are impulses given by customers, visits to museums, reading books, visiting other craftspeople and keeping my eyes open generally. This was the case likewise when I made the casket that was to be my master-piece.

It all started with the Christmas present for my wife, she had wished for a breast-pin for which I needed an appropriate "packaging". As a woodturner you obviously think of turning a cylindrical box. But with that box I wanted to take up an idea I got from an exhibition on 'bone-work' in Augsburg that summer. It was then when



I realized the beauty and virtues of bone for inlaid works, rings and hinges. So I designed a conical box of ebony with a ring of cattle-bone for the pin.

The next step towards my master-piece was gained, when I let go the idea of opening a cylindrical box in the common axial way. A cut in the longitudinal axis allows an easier access to the contents and makes the box more versatile.

Consequently I started making a series of cylinder-boxes in different proportions, with variations on lids, fastenings and subdivisions, using bone or not.

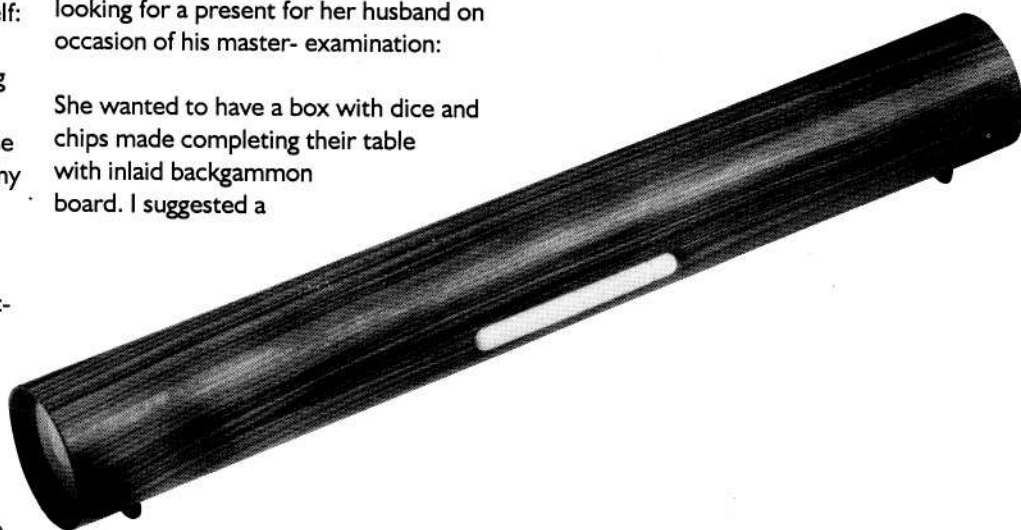
The last idea for my master-piece was given to me by a customer. She was looking for a present for her husband on occasion of his master- examination:

She wanted to have a box with dice and chips made completing their table with inlaid backgammon board. I suggested a

cylindrical casket to be opened lengthwise, guided by hinges of bone. The lock, the two disks at the ends and inlays in chips and dice were to be of bone as well.

Corresponding to the timber of the table the body of the casket was to be of kingwood. For the dice I suggested grenadille, for the chips grenadille and boxwood. As horse bone has a pattern it was chosen for all the pieces of bone in order to suit the grain of the wood best. All was sketched and the price calculated roughly. Although it was relatively high, the customer placed me with the commission because she wanted to value the occasion with an exceptional gift.

Starting from ideas and thoughts described, a master-piece has been developed which gives much allowance for further design.



Seminaire International du Tournage sur Bois

by Mike Dennis

It was 8am in early May when I met other Woodturners at Heathrow Airport. We, that is 14 of us, were on our way to St Girons in France for the French International Woodturning Seminar. The party consisted of 4 British demonstrators, Ray Key, Melvyn Firmanger, Gary Rance and Dave Regester, 7 AWGB members - Myself, Len Grantham, Frank Clarke, Tony Witham, Richard Barnes, Mac Kemp and Dave Reeks, who were to look after the gallery of work from members of the AWGB and an advice clinic, plus 3 Traders who had trade stands at the seminar.

We flew to Toulouse and then by bus to St Girons, some 80 Kilometres away. We arrived at the hotel at 12.30 and were shown to our rooms to unpack. We also met up with David Ellsworth from the USA and Richard Raffan from Australia who were also demonstrating at the seminar and staying at the same hotel.

After unpacking and freshening up we were met by Colin Kentish, an Englishman who was organising the seminar.

The venue, a fifteen minute walk from the hotel, was a large building that looked like an empty warehouse. Inside, the area had been partitioned off for the various demonstrations, trade stands, galleries of work from Great Britain, France, Switzerland and Belgium, and a dining area for lunch.

We set to and started to unpack the 4 pallets that had been shipped out some 4 days earlier. The pallets contained the display equipment, tools and items for the gallery.

The stands for the gallery were made up of boards standing on piles of bricks with white paper to cover them. We unpacked all the pieces and arranged them to show them off to their greatest effect.

We then set up the Advice Clinic which meant erecting the display equipment and arranging everything around a Euro 2000 lathe which had been supplied by Poolewood as indeed were many of the lathes used by the demonstrators.



Ray Key at one of his demonstrations

With everything set up, tired and weary, it was time to walk back to the hotel for a wash and brush up, then down to the bar for a drink before our evening meal.

The next morning we were up at 7.30 a quick continental breakfast and off to the seminar which was due to start at 8.30am.

Having been part of the organisation for seminars in this country I was amazed at the lack of safety for the audience at this event. They were



The gallery from the AWGB



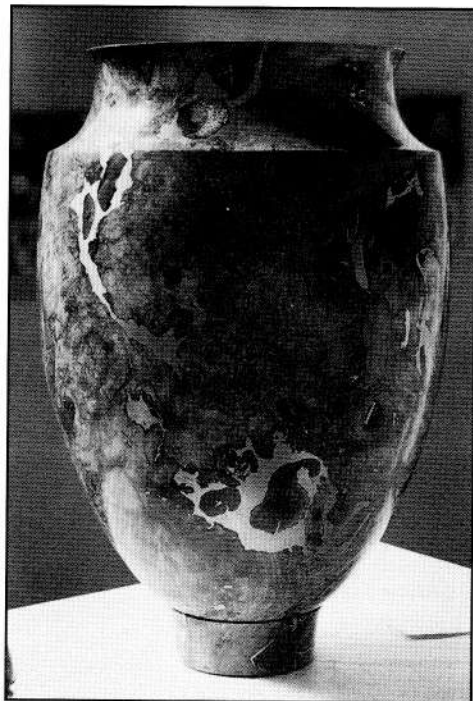
Len Grantham at the advice clinic - Gary Rance demonstrating in background

lathe which gave the demonstrators very little room in which to work. Each time the lathe stopped the audience would push forward to feel the finish of the piece of wood in the chuck. There were between 6 and 8 demonstrations going on at the same time. The galleries were open for viewing to the public as well as the delegates. The walls were filled with photographs of turning throughout the world which added much interest.

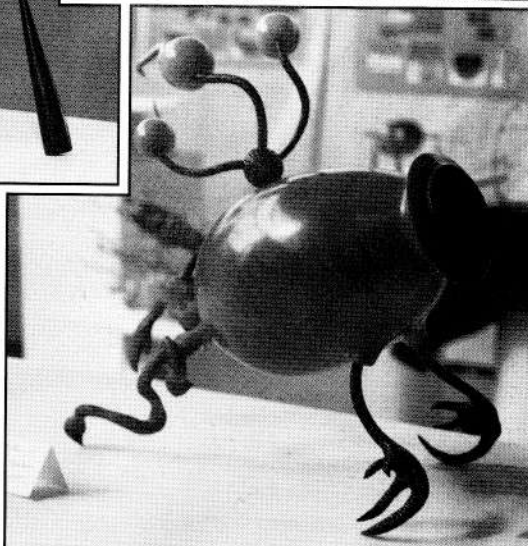
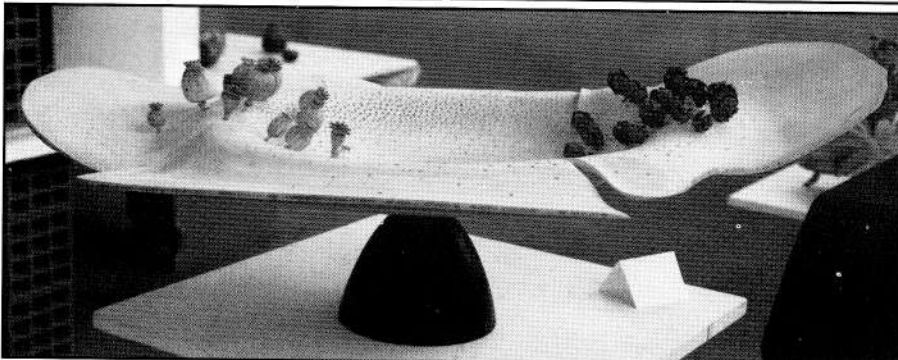
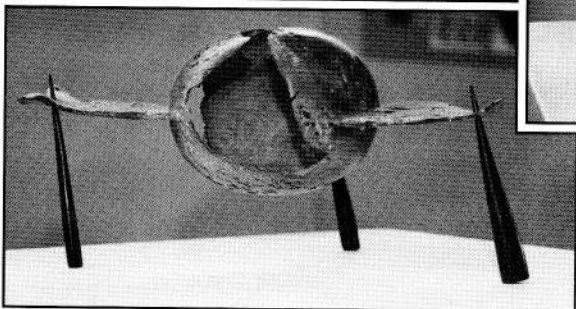
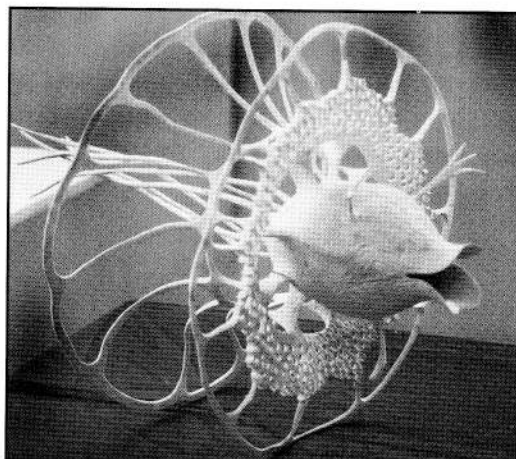
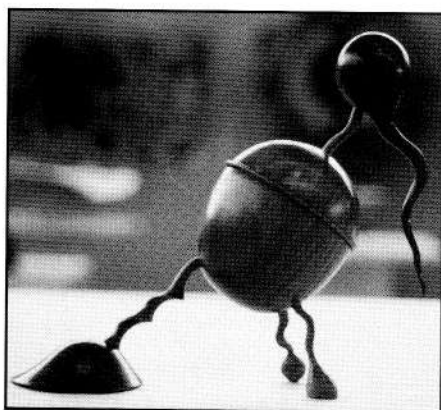
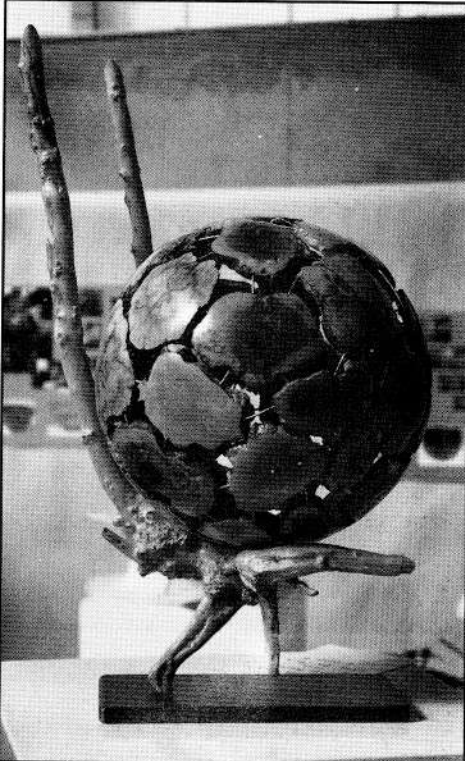
The whole event was attended by several interpreters who did a marvellous job in translating all of those technical terms that us woodturners use. The advice clinic, which proved to be a huge success with the delegates, would not have

succeeded without the interpreters.

The weather was not very warm and one morning we woke up to see snow on the hills. On the last night a gala was held for all the demonstrators, organisers, delegates and local dignitaries. All too soon it was all over and we were on our way back home.



Right - a selection of work from the French gallery



Affiliated Branches

AVON & BRISTOL

Secretary: Alan George, 276 Filton Avenue, Horfield, Bristol, BS7 0BA **Telephone:** 01179 697338
Meetings: 3rd Thursday of each month **Time:** 7.30pm **Venue:** The Huntman Inn, Westerleigh Road, Downend, Bristol

CHELMER VALLEY WOODTURNERS

Secretary: J Stock, Latneys, Witham, Essex. CM8 1EB **Telephone:** 01376 520093
Meetings: 1st Monday of Month (Excl Bank Holidays) **Time:** 7.30pm **Venue:** Sandon, Hayes Lane Chelmsford

COLCHESTER WOODTURNERS

Secretary: Wendy Thompson, 28 Barker Close, Lawford Dale, Manningtree, Essex. CO11 2JW **Telephone:** 01206 393746
Meetings: 1st Tuesday of each month **Time:** 7.30pm **Venue:** Copford Joinery, Haven Road, The Hythe, Colchester

COOMBE ABBEY WOODTURNERS

Secretary: Sheila Bromfield, 28 Maderia Croft, Coventry CV5 8NY **Telephone:** 01203 711925
Meetings: Every sixth Saturday afternoon **Venue:** Coombe Abbey Visitors Centre, Coombe Abbey Country Park, Bricklow Road, Coventry.

CUMBRIA WOODTURNERS ASSOCIATION

Secretary: Fred Singleton, 1 Piel View, Gleason, Nr Ulverston, Cumbria. LA12 0QQ **Telephone:** 01229 869550
Meetings: 3rd Saturday of each month **Venue:** Varies - please write for details

EAST HERTFORDSHIRE

Secretary: Nick Bright, 9 Yews Lane, Sawbridgeworth, Herts **Telephone:** 01279 724038
Meetings: Third Wednesday of the month **Venue:** Please write for details

EAST SURREY WOODTURNERS

Secretary: David G Granger, 290 Addington Road, Selsdon, Surrey, CR2 8LF **Telephone:** 0181 657 1895
Meetings: Last Thursday of each month **Time:** 7.30pm **Venue:** The Edgecombe Centre, Monks Hill, Selsdon

GRAMPIAN WOODTURNERS

Secretary: Alan Steele, 168 Jesmond Avenue, Bridge of Don, Aberdeen. AB22 8UL **Telephone:** 01224 822767
Meetings: **Time:** **Venue:**

HEART OF ENGLAND

Secretary: Marilyn Cox, 12 Fields Close, Badsey Evesham Worcestershire WR11 5JN **Telephone:** 01386 830196
Meetings: Every sixth Friday **Time:** 7.30pm **Venue:** Stratford Upon Avon High School, Alcester Road, Stratford Upon Avon, Warks

HERTS & BEDS

Secretary: Mike Sheaf, 51 Hart Hill Road, Luton, Bedfordshire. LU2 0BA **Telephone:** 01582 36382
Meetings: Second Tuesday of each month **Time:** 7.30pm **Venue:** The Cork Room, Adey Fields Centre, Hemel Hempstead.

KENT BRANCH

Secretary: Don Row, 45 West Hill Drive, Dartford, Kent. DA1 3DU **Telephone:** 01322 270807
Meetings: Please write for details as date and location vary.

MIDDLESEX WOODTURNERS ASSOCIATION

Secretary: David Harrop, 68 Burgess Road South, Beaconsfield, Buckinghamshire. HP9 1EJ **Telephone:** 01494 678201
Meetings: 2nd Thursday of each month **Time:** 7.30pm **Venue:** Harlington Community School, Hayes, Middlesex

MID MARCHES WOODTURNERS

Secretary: Paul Balcomb, Bodgers, 5 Caefelyn, Norton, Presteigne, Powys. LD8 2UB **Telephone:** 01544 267010
Meetings: Last Monday of each month **Venue:** Presteigne Memorial Hall

MID - STAFFS WOODTURNERS ASSOCIATION

Secretary: Gordon Fradley, Burton Meades, Orchard Lane, Hyde Lane, Lea, Stafford. ST18 9BB **Telephone:** 01785 247336
Meetings: First Friday of each month **Venue:** The Village Hall, Etching Hill, Rugeley, Staffordshire

NORFOLK WOODTURNERS SOCIETY

Secretary: Bernard Rose, 63 Belmore Road, Thorpe-St-Andrew, Norwich, Norfolk. NR7 0PR. **Telephone:** 01603 36990
Meetings: 3rd Wednesday of each month **Venue:** Fakenham High School or Beetley Village Hall, Nr Dereham, Norfolk

NORTH LONDON WOODTURNERS GROUP

Secretary: Robert Craig, 55 Woodside Park Rd, Finchley, London. N12 8RX **Telephone:** 0181-446 0679
Meetings: Third Thursday of each month **Venue:** Varies - please write for details

SCOTSWOOD

Secretary: George W Hunter, 3 Dundas Avenue, North Berwick, East Lothian, EH39 4PS **Telephone:** 01620 892293
Meetings: Varies - Please telephone for details

SOUTH CHESHIRE & STAFFS

Secretary: Barbara Fishburn, 12 St Leonard's Avenue, Ipstones, Stoke-on-Trent, Staffs. ST10 2 QD **Telephone:** 01538 266468
Meetings: Second Thursday of each month **Venue:** Senior Citizens Centre, Hanover Street, Newcastle-U-Lyme

SUFFOLK ESSEX CAMBRIDGE BORDERS

Secretary: Patrick White, 62 Chapel Hill, Halstead, Essex CO9 1JP **Telephone:**
Meetings: Second Tuesday of each month **Venue:** Peter Childs, The Old Hyde, Little Yeldham, Halstead Essex

SUFFOLK MID-COASTAL

Secretary: Jeff Moss, 29 Barton Road, Woodbridge, Suffolk. IP12 1JQ **Telephone:** 01394 383569
Meetings: First Thursday of each month **Venue:** Village Hall, Marlesford, Suffolk.

THAMESIDE WOODTURNERS ASSOCIATION

Secretary: Alfred Hammond, 44 Casleton Road, Wickford, Essex. SS12 0EL **Telephone:** 10268 734881
Meetings: Second Wednesday of each month **Venue:** Ridley Studios, 27 Leigh Road, Leigh-on-Sea, Essex

THE VILLAGE TURNERS

Secretary: John P. Cranna, 5 Stoke Hill, Oundle, Peterborough. PE8 4BH **Telephone:** 01832 273377
Meetings: 1st Saturday of each month **Venue:** 103 Garton End Road, Peterborough

WEST CUMBRIA

Secretary: Geoff Robinson 2 Countess Road, Bransty, Whitehaven, Cumbria. CA28 6BS **Telephone:** 01946 691803
Meetings: **Venue:**

WEST MIDLANDS

Secretary: Graham Lovett, 66 Beachcroft Road, Wall Heath, Kings Winford, West Midlands. DY6 OHX **Telephone:** 0138477398
Meetings: Every 6 weeks. **Venue:** Water Orton Primary School, Vicarage Lane, Water Orton, Birmingham, West Midlands

WEST NORTHANTS WOODTURNERS

Secretary: Mal Hill, 2 Kings Green, Prior Park, Daventry, Northamptonshire. NN11 4UB **Telephone:** 01327 72982
Meetings: Third Wednesday of each month **Venue:** Long Buckley RFC

WORCESTERSHIRE WOODTURNERS

Secretary: Ms Kathleen Price, 169 Birmingham Road, Kidderminster, Worcestershire. DY10 2SJ **Telephone:** 01562 741484
Meetings: Please contact the Secretary **Venue:** Droitwich High School, Ombersley Road, Droitwich, Worcestershire

News from the Branches



A recent exhibition as part of the Thornbury Festival provided the general public an opportunity to see a good cross section of our club's work in a wonderfully relaxed atmosphere. The Council Chamber is a beautiful room with a high wooden ceiling and iron tie bars, the large windows offering a soft light producing gentle shadows.

It was very gratifying to hear the comments of the visitors as they passed looked around and every piece at some time received praise. The comment that sticks in my mind was when a father pointed out a turned version of Rupert the Bear to his young son and said, "Look, who's that?". The boy quickly replied "Mummy"! I spent the rest of the day expecting to see a lady in a red pullover and yellow checked trousers.

Putting on an exhibition opens up opportunities, not only to be a steward and part of a team but to have time to talk to other club members. When there are so many pieces of work on display there is a chance to learn how some of them have been made and to enjoy those one-to-one discussions which are often too difficult in the two hours of club evenings.

It is very important when meeting members of the public who are thinking about taking up turning or have only just started for them to be able to talk to non-experts as well as those who are more proficient. Someone who has only been turning for six months or so can explain the advantages of club membership for them.

In May we had a visit from Brian Robbins, the boss of Robbins Timber at Bedminster, Bristol.

Unsurprisingly he gave a very interesting talk on timbers of the world, a subject with which he had been involved for many years.

Brian highlighted the two types of wood that there are, hard and soft, and the characteristics of the tress from which they come. An interesting fact about a teak tree is that it sheds its leaves every three years despite it being a tropical evergreen.

The grading of softwood, often a mystery, was explained and now we will understand that 4th quality softwood is joinery timber and unassorted quality is as good as we're likely to find in this country.

Brian went on to discuss in detail his five classic hardwoods - teak, mahogany, rosewood, walnut and oak.

Thanks to Brian for giving up his time to provide us with an interesting evening and also for kindly donating some timber for a raffle prize and for the useful free samples which disappeared so rapidly into the eager hands of members at the end.

Another of our club meetings recently was set aside as a hands-on tool sharpening workshop.

Many members brought grinders and associated accessories whilst experts in our midst showed us how it is done. Many members brought along their tools for a face lift and left the workshop happily clutching perfectly sharpened tools. It was great to see such a buzz of interest and enthusiasm at our club meeting.

Our most recent club meeting concentrated on carving turned items to enhance their interest and appearance and was led by Simon Keen. As usual Simon's attention to detail and thoroughness of explanation shone through and made the session extremely interesting and informative. Details of basic carving techniques, choice of tools and sharpening of tools provided beginners with a mine of background information. It also gave many members encouragement to start adding carved decoration on their turned work.

Alan George



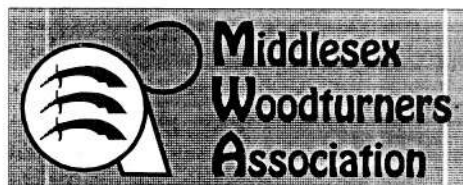
Since its foundation about ten years ago Worcestershire Woodturners has developed very considerably. Then meetings were held in members' houses, but as the numbers grew this was followed by parish rooms, a craft centre and a community centre. Three years ago we had the good fortune to be offered the woodwork centre of Droitwich High School. We have had nothing but kindness and help from the Head Master and staff, and were able to buy and house our own lathe there. Our monthly meetings were increased from one to two and we were now able to stage demonstrations. More recently several of the members have got together and provided closed circuit TV using a video camera operated by the Chairman, Alan Ritchie, and John Millward kindly presented a TV set. This provision is vital as with the increase in the numbers very few would be able to see adequately. A committee is kept hard at it to organise and prepare meetings and a newsletter is produced so that we can remember what has happened. An outstanding feature is the readiness of the members to help. Once a month a project is set and while there is no compulsion a large number of people take part, and a good standard is achieved.

Our President is Reg Sherwin, whose teaching is of great benefit to all, beginners and experienced alike. We know he is well known to other branches and are delighted they should have the benefit of his teaching; provided they promise to send him back! In the last year we have also had excellent demonstrations from others, including Hugh O'Neil, Gordon Fradley, Phil Irons, Stephen Cooper and last, but by no means least, Bill Jones. Several of our own members have given high quality lectures and demonstrations, and we have been developing a series of 'hands-on' meetings where no less than four Little Gem lathes are produced and everyone has a go. We may not have got quite the whole membership fully involved yet but the

original shyness is being eroded and it is only a matter of time.

A further development has been the provision of exhibitions. Droitwich Town Council provided a well equipped exhibition hall and one of our members, John Phillips, had been involved there for several years. It was not too difficult a decision to leave him to do the same for us, and most successful.

G. E. S. Jones



Exhibition at Uxbridge Central Library.

At the beginning of July 1997 the Middlesex Woodturners Association were given the chance of putting on a two week Exhibition of their work at Uxbridge Library. The Library has a very attractive exhibition area, well lit by natural light, and well equipped with secure display facilities. The member of the Library Staff who is in charge of the area gave Mike Dennis and his small team much valuable help and advice during the setting up of the display.

It was intended that Members' most prized pieces should be on show to the public and it was not expected that many would in fact be for sale. Seventy three pieces of superb work were on display, the whole show being valued for insurance at more than £5000! Mike and his team had at one point been concerned that they might not have enough on show, but they

need not have worried. In the event such was the public interest in the display that over £700 worth of sales were in fact made, and there were several enquiries from people who either turned already or were intending to take up the Craft.

The work on display ranged from beautiful sets of lace bobbins to really large examples of both spindle turning and faceplate work, all expertly turned. The standard of design of the majority of items was very good, certainly up to the standards which the general public have come to expect at major exhibitions. Despite the protestations that their work was not good enough Mike Dennis bullied several of the exhibitors into allowing him to take their work to the AWGB Exhibition at Warwick University this year. Their work was good enough! The Association was delighted to hear that several of its members' pieces had in fact made it into the best one hundred items selected for display at important exhibitions during the coming year. Middlesex Woodturners are proud to know that their work compares well with the best in the country.

It is true to say that the Exhibition at the Uxbridge Library was the most successful show which the Association has put on during its history. The Association has already been asked if it will be able to mount another similar show in the future. Thanks are due to the Library and its staff, and to all the Members of the Association who contributed work, helped with setting up and with stewarding, and in particular to the Middlesex Association Chairman Mike Dennis who put a great deal of work into the preparation and general organisation of the exhibition.

Alan Spargo



The exhibition in Uxbridge Library

Country Style Creative Fair



OLYMPIA • LONDON
OCTOBER 31 - NOVEMBER 2 1997

TO CELEBRATE THE LAUNCH OF COUNTRY STYLE'S EXCITING NEW CREATIVE FAIR IN LONDON WE HAVE 6 PAIRS OF COMPLIMENTARY TICKETS TO GIVE AWAY.

Anybody interested in these tickets should apply to Peter Einig as soon as possible. They will be issued on a first come, first served basis.

The fair will be staged at the Olympia Exhibition Centre, London from October 31st to November 2nd 1997

WOODTURNING COMPETITION GREAT YORKSHIRE SHOW 1997 RESULTS

These annual competitions were held on the 8th, 9th & 10th July, with the winning competitors receiving prizes of cash, tools and vouchers, to a total value of over £950.00.

Sponsored by The Yorkshire Agricultural Society, John Boddy's Fine Wood and Tool Store, Ashley Iles Tools, Henry Taylor Tools, and Robert Sorby Tools.

THE WOODTURNING COMPETITION was judged by Mr. Stuart Batty of Buxton, who awarded the following:

- GOLD:** Mr. D. Wardingley, Knaresborough
Yew vase.
- SILVER:** Mr. D. Rushworth, Ossett
Burr Poplar bowl
- BRONZE:** Mr. J. Haigh, Huddersfield
Boxwood gavel.
- HIGHLY RECOMMENDED:** Mr. H. Middleton, Bradford
Burr Elm bowl.
- RESERVE:** Mr. I. Clarkson, Hebden Bridge
Brown Oak Burr off centre bowl.

More Sycamore

by Dave Grainøer

This can be a rather bland timber although when quarter sawn can reveal some very attractive figure. Sycamore turns easily, takes stains and glues well and it is an excellent wood for carvers, says our very own whittler of lovespoons Brian Pattison. The wood is whitish and is often used in highlighting parts of musical instruments. Sycamore planks should be seasoned by stacking boards on end, rather than the conventional way of sticking and stacking so as to maintain it's consistent texture. That's what the books say. Members of East Surrey Branch (ESW) have been invited to help themselves to a large quantity of Sycamore which was felled during January in the woods adjacent to the Edgemoor Centre where we meet..

So far we have had three Saturday mornings extracting the sycamore from the woods. Both days were fine, maybe a little cold but's that's no problem when humping timber. The main problem has been getting the wood to our cars. (You cannot take your car into the woods.) That's probably a good thing otherwise we would be contributing to converting our woodlands into motorways. Wheelbarrows were the order of the day for humping wet wood through the woods. They do not damage the footpaths and are not equipped with the infernal combustion engine, although chainsaws are. Several people walking their dogs stopped to watch what we were doing, Some even tried to complain - not because of the noise made by the saws but that we appeared to be cutting the trees down. But we were not ,This had been done in the interests of conservation by those who know about these things . Anyway we were cutting them up. One man who stopped to comment showed a genuine interest in the ESW. He then laid on tea, coffee and biscuits for us all in his garden nearby. This was very welcome. We enjoyed the break and invited him and his wife to one of our demonstration evenings. Both the Saturday's were fulfilling. We've helped clear some space and we've got some wood. There's still plenty of wood left. We hope that we shall have some more Saturday's in the woods although we cannot promise to provide the refreshments. If you haven't a chainsaw it doesn't matter, all you need is some muscle and a wheelbarrow and join the procession.



Some safety hints on using chainsaws

1. Make sure that the working area is taped off and that people or animals do not enter your area. Do not work alone.
2. Never attempt to use a chainsaw unless wearing protective clothing. Leggings or a specially designed suit for chainsaw operators, Protective boots, Helmet, Ear and eye defenders A protective glove on the left hand is sensible.
3. Always work with the work to be cut on the right of the body. Do not try to use the saw left handed. this is unsafe. Always keep both hands on the tool.
4. Ensure that a good stable footing is maintained. Keep both feet on the ground. Always cut at full throttle, do not force the tool neither let the bar become trapped in it's cut. Plan each cut before applying the saw.
5. Maintain a refuelling area remote from the working area. Remember when refuelling to check the oil level too. Use this opportunity also to examine and adjust the- chain. Keep the chain sharp.
6. Be aware of your own limitations, if you are tired, stop work, if you are uncertain don't do it. Remember you don't know how heavy a piece of wood is until you've got it off the ground. Observe safe lifting techniques

Discount to Members

Bandsaw blades from Dure-Edge are being offered to bona fide AWGB members at a 10% discount. Quote your membership number and Ref WT5.97 when ordering.

Credit cards are accepted and there is a free phone telephone number.

Prices are inclusive of VAT and packaging.

Dure-Edge, 21 Station Road, Woodley,
Stockport. SK6 1HN
Telephone 0500 252337

An Examination of Plagiarism

*An article taken from the North Carolina Woodturners magazine and written by Bill Hyatt.
Although written in 1994 the subject matter is still relevant today*

To be similar or not to be similar, that is the question!

As we all know, the law protects unique products through patent law, music and other intellectual material through copyrights, and identifying names and symbols through trademark protection, but what about a style or idea borrowed from another artist or craftsman? The simple answer is that our society has not seen fit to extend societal protection to such creations through force of law.

This being the case, what are the ethical restraints which we should feel when our product is disturbingly similar to that of another? I do not offer the following thoughts as a lawyer, but in my capacity as a professor of ethics. This does not make me more qualified than anyone else to make suggestions in this area but simply means that I have had the opportunity to spend time studying the conflicting ethical theories that have developed over the last two-thousand years.

In answering the question posed, I would first suggest that it be broken down into different situations (situational ethics, if you like), and before doing this would suggest that there are few, if any, ideas or designs in woodturning that are truly original. To illustrate this, Bob Stocksdale is quoted in a book on contemporary woodworkers as saying he visited a museum to see an exhibit of ancient Chinese art and was shocked to discover that the Chinese had been copying his designs over two-thousand years ago. While his remarks were clearly tongue-in-cheek, it illustrates that you would be hard pressed to find any design, including Stony Lamar's unique (to woodturning), multicentre works that do not have antecedents in pottery, glass, or metal. Most all of our ideas come from something that we have seen or experienced, and thus almost everything is plagiarist in some form.

The first distinction we must then make is what has been copied: a design, a material, a method of work, or a style. Take for instance the thin-walled vessels that David Ellsworth pioneered. Would anyone seriously contend that other woodturners

were acting unethically if they made thin-walled vessels? Likewise with the natural-edge bowls which are often attributed to Rude Osolnik. Both are styles or methods of work, and in no other art medium would be considered unethically pirated. Further, to accept this as wrong means that if one person develops a style, no matter how poorly, no one in the future could ever do anything in that style, no matter how much they might be able to improve it, and also without regard to the fact that the precedent for the style could almost undoubtedly be found in some other medium, whether two or three dimensional. I would argue that unless these styles are developed and recognized as clear "signatures," identified only with that artist, it is not unethical to work in that style any more than it was unethical for the impressionists, pointillists, realists, super realists, or abstractionists to work in a common style, subject to the distinctions which follow.

The second distinction is whether the copy is slavishly created, or merely utilizes another source for inspiration. I saw several years ago in a British woodturning magazine, examples of hollow Christmas ornaments. Although I could understand how to make them, I lacked the tools to do so. After seeing Herb Carlist demonstrate how to make the tools for hollowing these ornaments, I began to make my own ornaments, which resembled neither Herb's nor the ones I had seen in the magazine. At last year's AAW symposium, I saw an ornament by Bob Rosand, turned from a Banksia pod, and began to use that material; but my ornaments were clearly of a distinct design. I then hit on the idea of making my ornaments from worm-eaten woods such as holly, which created an effect somewhat similar to that of the Banksia pod. If I were accused of plagiarism, whom did I plagiarize: the British woodturner who gave me the original idea; Herb Carlist, who showed me how to make the tools; Bob Rosand, who gave me the idea for a new material; or no one, because my style is distinct from the others? This is not plagiarism because it is an idea that has evolved through my efforts rather than being a slavish copy of anyone's work. While I received help at several turns, I am

not copying someone else's work and passing it off as mine, which is the definition of plagiarism. I suggest that if you get an idea from someone else's work, begin to experiment with the concept, and ultimately happen to develop a form which is substantially similar to the one you saw because, from your experiments, you determined that of all the similar forms, this is the most aesthetically pleasing, it is not plagiarism. However, if you simply copy the form because you like it, but do not want to go to the trouble of developing your own design, you are clearly acting unethically.

Finally, I would suggest that the context in which the similar form is presented is important in determining the propriety of your act. Plagiarism does not say that you cannot quote, copy, or use an idea; it simply says that you must give due credit rather than pass off the design as your own when in fact you have taken it from someone else. In this context, it would be difficult for me to add a footnote to my natural-edge bowls that they are in the style of Osolnik, nor would it do much good to advise prospective purchasers that I got the idea from someone else, because the work is not being purchased for the originality of the idea but simply because the purchaser likes the object. More importantly, at least to me, it would not impact Osolnik in any way, as he is not competing in this market. To me, this failure to disclose is not claiming the idea as my original design, as is required for plagiarism, nor is it in any way trading on Osolnik's name or personalized style. However, to be invited to be in a competition with Osolnik and deliberately copy his style in a way that would deceive the judges or cast a question as to which of us developed the style, would be clearly unethical.

The bottom line is that we should not be ashamed of looking at the work of others for inspiration. Only when we attempt to use the work of others to avoid having to work ourselves or use someone's ideas in a way that directly impacts that person are we acting unethically, whether or not it fits the technical definition of plagiarism.

The Axminster Tool & Machinery Exhibition

14-16 November 1997 Friday - Sunday 10.00am - 5.00pm

The 1997 Axminster Tool & Machinery Exhibition staged, for the first time, at a national venue - The Royal Bath & West Showground, Shepton Mallet, Somerset - will be bigger and better than ever before. A showcase of quality exhibitors offering a wide spectrum of handtools, powertools and machinery. The event should have an appeal for each and every visitor from amateur and professional.

With virtually all of our suppliers present, the exhibition must be the ideal opportunity to talk directly to the actual manufacturer for advice and up-to-the-minute information on their product range. A new introduction to our exhibition this year is the inclusion of our extensive range of engineering products from light duty metal turning lathes to heavy duty milling and drilling machines, all set up and on demonstration. Also present will be the leading professional power tool manufacturers (AEG, Bosch, DeWalt, Hitachi and Makita). Each manufacturer is able to demonstrate and show their very latest tools and equipment.

This year's Axminster Tool and Machinery Exhibition is organised to reflect a diverse range of products shown in our 400 page mail order catalogue. A vast range of demonstrations and lectures will be held throughout the day on woodturning (with over 14 nationally known woodturners), general woodworking, metal turning/milling and woodcarving. Special features this year include the much acclaimed AWGB presentation of 100 turned items from leading woodturners throughout the world and the furniture competition - sponsored by Axminster Powertool Centre and Furniture and Cabinetmaking magazine (GMC) - with prizes totalling over £15,000.

Finally there will be many special prices, discounts and offers for the duration of the show so whether your interest be woodworking, woodturning, engineering, building or just a keen home user of tools then a visit the Axminster Tool and Machinery Exhibition in November should not be missed

AXMINSTER
POWER TOOL CENTRE

Ticket hotline

01460 68686

Exhibition Enquiries

01297 33656

Available by telephone on 01460 68686

or by post from:

ATME Tickets Sovereign Exhibition Management,
Bramley House, Combe Wood, Combe St. Nicholas,
Somerset TA20 3NN

Cheques payable to: Sovereign Exhibition Management

Entrance **£3.00**

Advance tickets **£2.50**



For your free copy of our
latest 400 page colour
catalogue telephone

01297 - 34836

As there is working machinery at this event all children under the age of 16 must be accompanied by an adult and supervised at all times

The Royal Bath & West of England Showground Shepton Mallet Somerset

Axminster Power Tool Centre Chard Street Axminster Devon EX13 5DZ Telephone: 01297 33656

The following companies are offering a
discount to AWGB members on
production of their membership card

L. H. Turtle 10%

10 Park Street

Croydon

Surrey CR0 1YE

Telephone 0181 688 5513.

B. H. P. Woodcrafts 10% - 15%

Rainbows End Depending on

Mayes Lane what you buy

Sandon

Chelmsford

Essex CM2 7RW

Telephone 01245 227229

Peter Childs 5%

The Old Hyde

Little Yeldham

Halstead

Essex CO9 4QT

Telephone 01787 237291

FOR SALE

Members may advertise in this column free of charge. It will
not however carry any commercial advertising

Coronet Major Lathe

36" between centres

24" Bowl turning attachment

£250

Craft supplies precision chuck with 8 attachments

£35

Craft Supplies 6in1 chuck, 4 sizes of collet £25

Both 3/4" x 16tpi

Telephone 01295 259334 (Oxford)

Coronet Elf

48" bed fitted with full electronic variable speed

3/4 HP motor complete with bowl turning rest

Long hole boring kit and other extras

£400 o.n.o.

Peter King, 5 Y Felin, Conwy

LL32 8LW

Tel: 01492 592774



**Friday 3rd to Sunday 5th
October 1997**

9.30am - 5.30pm daily

Hall 10 NEC, Birmingham

This exhibition, like previous shows at the NEC, has a primary focus on woodturning, so if this is an area of particular interest you will find even more within the range of demonstrations, displays and exhibits. Other areas of the woodworking crafts are also highlighted and there are special features, including a daily lecture programme, which relates to carving, routing and finishing.

Whatever your own speciality, if you enjoy working with wood then you are sure to find a great deal going on at this exhibition.

Demonstrations

Special teach-in woodturning workshops, allow you to take a seat for a full demonstration in the techniques employed by some of those who are known as masters of the lathe. These workshops are equipped with a sound system plus video cameras and monitors that allow you to get a close up view of what is going on at the cutting edge. Don't miss one of the sessions that take place throughout the day with the following experts.

**Ray Key
Paul Clare
Rolly Munro
Stuart Mortimer
Stephen Cooper
Ray Jones
Robin Wood**

The entries into the turning competitions featured at this show make for superb displays of fine craftsmanship. See whether you agree with the placings awarded by the judges and vote for the turned piece you think is the best in the Take Your Turn competition; the maker of the piece with

the most votes will receive a special trophy donated by The Association.

Take Your Turn

An open woodturning competition in three categories for faceplate work, spindle work and combination work, sponsored by Craft Supplies in association with BriMarc, Purlite and Delta UK.

Making a Good Start

A woodturning competition for teenagers and novice turners designed to encourage beginners to discover their true potential in lathe work. This is sponsored by Robert Sorby Ltd.

For more information on these competitions please see either The Woodturner, Practical Wood Working or The Woodworker magazines or contact Nexus Tel:01442 66551

Record at risk

Look out for biggest bowl ever to be turned

The record for the world's largest bowl is currently held by Dan Cunningham of New Zealand with a piece 2 metres in diameter by 1.6 metres deep. That record could now be at risk as Stuart Mortimer and colleagues in association with Tyme Machines and the Highlander lathe prepare for some more outsize turning.

Their first large bowl some 7ft in diameter and 22in. deep was displayed at the Wembley exhibition, but now they are getting ready for two more attempts at going grander. The first will be in America for a show in Philadelphia, but the second will be back here in England with another piece of large cedar offering a bowl blank that is in excess of 7ft diameter and more than 4ft deep.

Stuart and the Tyme team are attempting

to complete the bowl for display at the NEC using the Tyme Highlander lathe, and you will be able to see the lathe in action and just how they approached this mammoth task.

Lectures

Free lectures from the experts on woodturning will range from Design Evolution with Ray Key, Shape, Form and Balance with Ray Jones, Sculptural Turning and Texturing with Paul Clare, and Get the Best From Your Wood with Stephen Cooper.

Wonders in Wood

A gallery display to celebrate the best in woodturning

As part of our tenth anniversary, and to mark the occasion we will be mounting a display sponsored by Liberon Waxes to celebrate the woodturner's art and craft in which there will be 100 or so pieces in different styles and sizes. The display will include work by the world's top turners and members of the Association

Your problems solved and a hands-on opportunity

If you have a problem with turned work or you would like to know how to get started with woodturning, then you can turn to several sources. An Advice Clinic is being hosted by the AWGB, and a number of members will be on hand to give help to solve your problems, give independent advice on equipment or to demonstrate on the lathe how to overcome turning technique problems.

Also at the show is a Woodturning Studio hosted by Jamie Wallwin of Craft Supplies where you can get to grips with the subject and enjoy a free lesson in woodturning techniques under the eye of this renowned turning teacher.

The International Woodworking & Furniture Exhibition, Ascot

24-26 October 1997

9.30am - 5.30pm daily

SPECIAL DISCOUNT FOR AWGB MEMBERS ON ADVANCE TICKETS FOR NEC & ASCOT EXHIBITIONS

Avoid the queues and save money by booking now

Please complete the forms below and send them in by the dates shown below or call the Ticket Hotline number shown below

ADVANCE TICKET APPLICATION FORM FOR AWGB MEMBERS ONLY - NEC

PLUS - BOOK IN ADVANCE AND RECEIVE A DISCOUNT VOUCHER ENTITLING YOU TO 50p OFF THE SHOWGUIDE AT THE EXHIBITION.

ADVANCE DISCOUNT TICKET PRICES: NEC

| | On the Door | AWGB Members | No. Req | £Total |
|-----------------|-------------|--------------|---------|--------|
| Adults | £7.50 | £6.00 | | |
| Senior Citizens | £5.50 | £4.00 | | |
| Children | £5.50 | £4.00 | | |

(5-16 yrs inc.)



Total Enclosed: £.....

I enclose a Cheque/RO. payable to Nexus Special Interests Ltd. or please debit my Access/Mastercard/Visa ☐ AMEX ☐

Card No.

Expiry/..... Signature.....

Name: (Mr/Mrs/Miss)

Initial..... Surname..... Mem No.....

Address:

..... Postcode.....

Telephone:..... Date:...../...../97

Send to: Advance Tickets, International Woodworking Exhibition NEC, Nexus Special Interests Ltd., Nexus House, Boundary Way, Hemel Hempstead, Herts. HP2 7ST.

Please tick this box if you do not wish to receive direct mail from other companies ☐

ADVANCE TICKET APPLICATION FORM FOR AWGB MEMBERS ONLY - ASCOT

PLUS - BOOK IN ADVANCE AND RECEIVE A DISCOUNT VOUCHER ENTITLING YOU TO 50p OFF THE SHOWGUIDE AT THE EXHIBITION.

ADVANCE DISCOUNT TICKET PRICES: ASCOT

| | On the Door | AWGB Members | No. Req | £Total |
|-----------------|---------------------------------------|--------------|---------|--------|
| Adults | £6.50 | £5.00 | | |
| Senior Citizens | £5.00 | £3.50 | | |
| Children | FREE when accompanying a paying adult | | | |

(5-16 yrs inc.)



Total Enclosed: £.....

I enclose a Cheque/RO. payable to Nexus Special Interests Ltd. or please debit my Access/Mastercard/Visa ☐ AMEX ☐

Card No.

Expiry/..... Signature.....

Name: (Mr/Mrs/Miss)

Initial..... Surname..... Mem No.....

Address:

..... Postcode.....

Telephone:..... Date:...../...../97

Send to: Advance Tickets, International Woodworking Exhibition ASCOT, Nexus Special Interests Ltd., Nexus House, Boundary Way, Hemel Hempstead, Herts. HP2 7ST.

Please tick this box if you do not wish to receive direct mail from other companies ☐



Discount advance ticket hotline

01442 244321

Please have your credit card ready

Closing Dates

NEC September 26 1997

ASCOT October 17 1997