

Advice Clinic a winner at the N.E.C.

The lights dim, the machines become silent and the third annual National Woodturning Show, sponsored by the Practical Woodworking Magazine, comes to an end. There is, however, much work to be done, packing away exhibits, dismantling of stands and generally tidying up before the exhibitors/presenters/stewards can step back and reflect on another successful show.

Sunday night was the end of a hectic four days of setting

up, displaying, selling, bartering and all the hundred and one things necessary to make a good show.

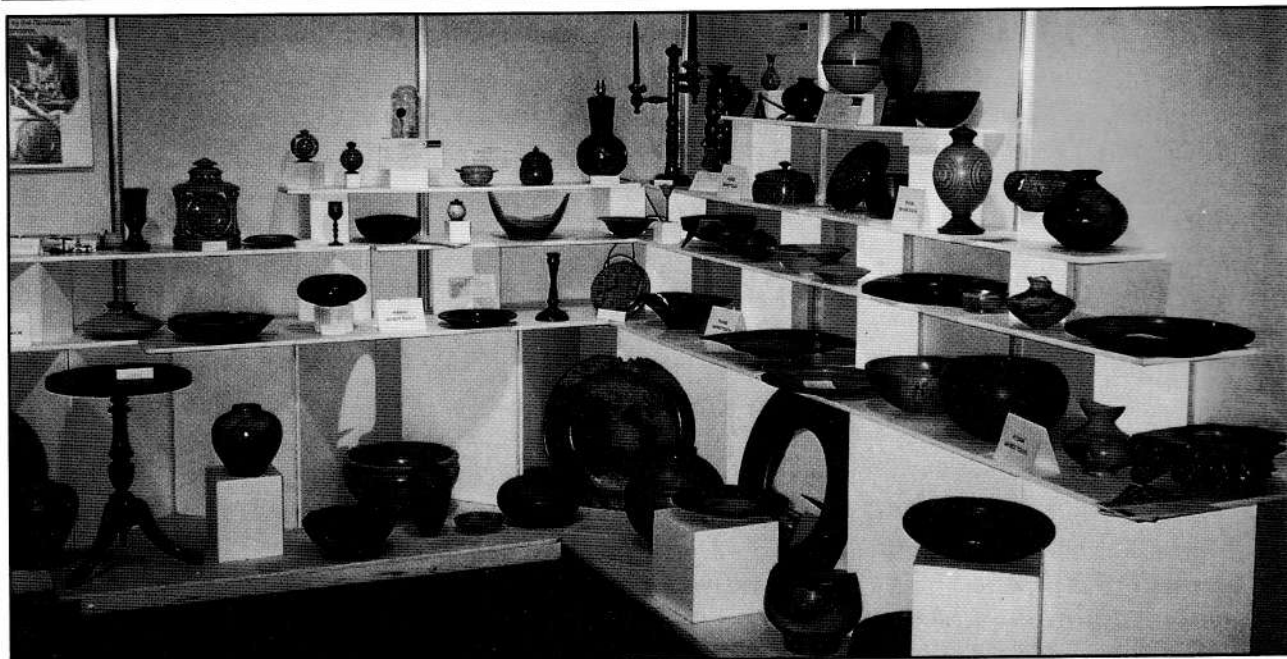
As in previous years the Association had been provided with stand space, courtesy of Practical Woodworking magazine, for a display of work by members, with additional space this year for an "Advice Clinic" for visitors, on aspects of Turning, Finishing and Sharpening. Various manufacturers and

companies were to provide the lathes, tools, timber, polish, etc, to enable the Association to provide such a clinic, and what was to be a first time venture in such a service. The West Midlands Branch, with the assistance from other local Branches, were to provide stewards for the Display Stand, with Len Grantham organizing the Advice Clinic section.

But of course this all had to be set up, and Thursday was the day. Eric Ditchfield, the



NEC (Cont'd)



Association's Exhibition Organizer, had the task of transporting the AWGB stand equipment and display items from a Pickfords depot, somewhere "South of Watford Gap" arriving mid morning to be met by Tony Wiggin and myself, where we proceeded to unload the van, erect the stand and, after a quick paint job, display the many varied items of members' work. The Advice Clinic under Len's watchful eye and with the assistance of Reg Sherwin was also being set up, as of course were all the other displays by manufacturers and companies involved with the show. It is quite an experience to see a major show being set up.

Friday was show day one. At 10am the doors opened and very quickly the hall filled with visitors, and although the Association Stands were at the far end of the Hall from

the entrance, it wasn't long before we were crowded out with enthusiasts looking, listening and inquiring, keeping the stewards and Help Clinic advisers busy. The following two days followed a similar pattern, although the "crush" was more gentle on the Saturday and Sunday.

Over the three days, 45 new members were "signed up" and numerous enquiries made in relation to "the nearest Branch to me", and in areas where no Branch existed, how to set one up. From an Association point of view the show was another success, and it was nice to renew old friendships, and forge new ones with people all having a common bond - the love of wood in general, and woodturning in particular. The number of people attracted to the Advice Clinic was also encouraging

and new venture must be judged as a great success. I'm sure that Len and Reg, ably assisted by Alan Hewitt, Hugh O'Neill, Alan Calder, Mark Pickering and Bob Weir, also enjoyed the experience.

My thanks for help on the stand over the three days goes to Mary Lloyd, Alix Hood, Don Moore, Dave Wood, Geoff Newman, Norman Richards, Tom Lewis and Les Collett (West Midlands) Alan Griffin, Alec Ritchie, James Barker and Walter Jarvis (Worcester) Mike Donovan and Peter Blake (Heart of England) and Mark Pickering (mid-Staffs), with special thanks to Eric Ditchfield for his help and support.

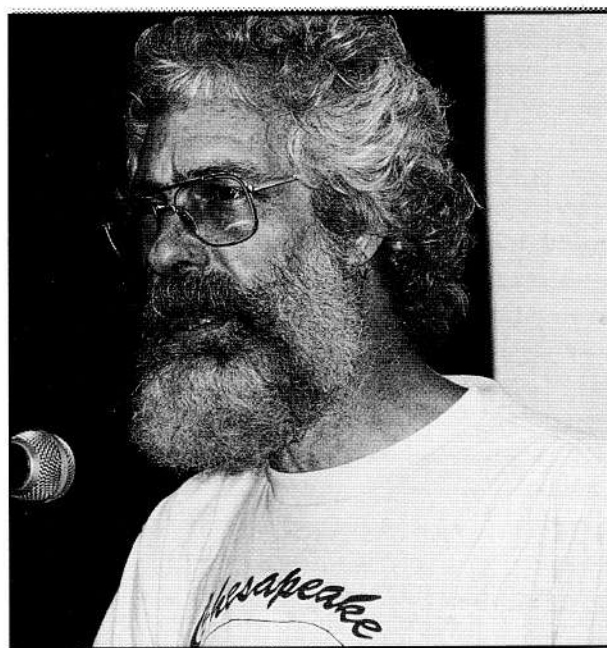
With such support, goodwill, and camaraderie the Association of Woodturners of Great Britain can only go from strength to strength.

Graham Lovett

Judge's Report

By David Ellsworth

It is always a personal joy to share a glimpse of what's happening in contemporary woodturning in distant lands. Such was the case this past October when I was invited to participate in the National Woodturning Show that was organised by Practical Woodworking magazine and held at the National Exhibition Centre in Birmingham, England.



David Ellsworth

Centre stage was taken by a competitive exhibition of turned objects that covered a broad range from spindles to furniture to bowls. Entries were solicited from Practical Woodworking's readership, while Craft Supplies provided very generous financial awards for the winners. Along with Ray Key and Bert marsh, I was pleased to be included as one of the jurors of these wonderful objects.

Clearly, this exhibition was one of the highlights of the weekend and a particular delight to the viewing public who had otherwise expected to see only tools from the trade, plus a myriad of demonstrations by some of the world's best known turners.



Ray Key presents Patrick Blake with the AWGB Cup for the overall 'Best in Show' as decided by visitors votes

Also important was that these objects were not made by the well recognized names in the turning world, but by expiring hobbyist/craftspersons working at the peak of their current development in woodturning. That was refreshing, for here we saw an honesty in evolution that is often overshadowed - if not overlooked by the technical virtuosity of many professional turners who have found their style and continue to stick with it.

NEC (Cont'd)



Here we saw the energy of struggle in both technique and design that is symbolic of the vitality of an idea taken to form. Some objects, of course, were clearly naive while others were extraordinary in their simplicity and execution. as expected, there was a modium of influences from both traditional and contemporary turning styles; some were quiet, some screamed, and all were relevant to the growth process that is so important in the continuum of any craft field.

My only regret was that so few objects were submitted to the competition. Even beyond the high monetary awards that were presented, this was a great opportunity for public exposure for those turners who do not often have that chance. I only wish I could be around next year to see the growth.

Patrick Blake with his winning entry

Branch Seminar Comments

by Ray Key

It was my pleasure this summer to be a demonstrator at two, very full, one day Seminars organized by Branches of the Association, the were both blessed with wonderful weather, and both were well attended, attracting similar numbers of people, but were very different. The first was organized by the Suffolk Essex & Cambridge borders group at the late Peter Childs headquarters, the business now being run by Roy Child and the rest of the Child family. Every one was welcomed on the lawns of The Hyde, an army tent was set up to dispense food and drink through the day, and what wonderful food it was.

The morning saw Tony Witham, Chris Child and yours truly doing two demonstrations each, in the barn and teaching workshops. On the lawns a group of bodgers had set up their pole lathes, these being William Wall and Nick & Kathleen Abbott, there was a great deal of interest in what they were doing, their demonstrations provided the first sessions after lunch, I think I will be sticking with my electric lathe though. After this it was back to one more session from Ron Stow, Tony Witham and yours truly. During the whole event Christine Witham demonstrated Pyrography, sales

were taking place in the Child's shop and a creditable display of members work was on show. The day was concluded with thanks to those who made it possible and the drawing of a fine raffle and a resolve to do it all again next year.

The next event was staged by the Norfolk Woodturners Society, this is a bi-annual event and takes place on the year the AWGB does not do it's international seminar. The venue was at Fakenham High School, and a super venue it is, if only there were more schools like this where craft skills are taught. The demonstrator list was

Editorial

Firstly I must apologise for this edition of Revolutions being late. It is entirely my fault. During the last 2 or 3 months my work has necessitated my working long hours most days of the week. My wife has also had a major operation but is now back home and making a good recovery.

This edition, as I am sure you have noticed, has been printed on thinner paper than previous editions. The reason for the change is an effort to reduce the postal charges which seem to rise with each edition. The last newsletter cost 36p per copy to post bringing the postage up to £550. You will read elsewhere in this newsletter that the AWGB funds are a little depleted and any savings in expenditure have got to be examined. However the

Committee is adamant that the quality of the newsletter does not suffer.

I must thank all who have taken the trouble to write articles for this addition after my whinging recently. I am sure there are other stories and events taking place out there that would be of interest to other readers. Articles like the one by Len Grantham are always welcome and interesting. There is no report on the Sandown exhibition apart from the Chairman's comments because I didn't go to the Show and nobody else wrote anything.

The past year has seen a lot of changes within the Association - let's hope that 1996 sees bigger and better benefits for its members

Mike Dennis

Continued from page 4

impressive, Melvyn Firmanger, Ray Jones, Bert Marsh, Keith Rowley and myself, this wide diversity of talent made sure there was something for everyone attending. There were three demonstration sessions, one in the morning and two in the afternoon, with all the demonstrators working in separate rooms simultaneously, excellent lathes were provided and AWGB mirrors were in place. A trade show was set up in the school hall and most things a turner could need were to be found here, it was good to see some old friends of the Association

supporting this event. Also a display of members work was set up and some excellent pieces there were. The day concluded with thanks to all and the drawing of prizes in a fine raffle, one other nice touch was the Souvenir Programme put together for each delegate by John Foulger, very impressive.

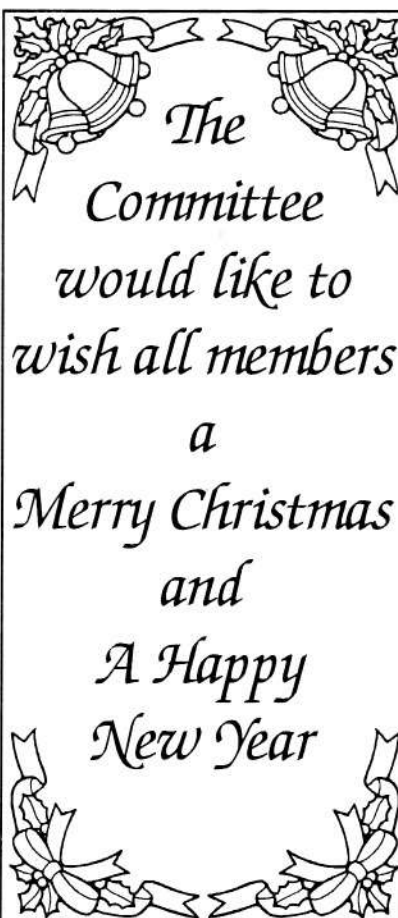
It was nice to be part of these two events and to see the tremendous enthusiasm of the Branches and the work they put in to provide members of the AWGB with a chance to learn from some of the best, and enjoy themselves into the bargain,

Contents

NEC	1
Seminar Comments	4
Editorial	5
Chairmans report	6
International Seminar	8
Love Goblets	10
Turn East 94 report	11
Committee News	12
Branch News	14
Letters to the Editor	18
Loan A Lathe	20

Articles letters, tips etc contained in this newsletter do not necessarily carry the endorsement of the AWGB.

It is a policy of the AWGB that in the newsletter we will not review tools, books or products.



Chairmans report

This is a report I didn't expect to be making, but at the end of August Tony Waddilove our elected Chairman resigned, he had taken on the Chairmanship for one more year after a good deal of arm twisting from a number of us. However due to increased work pressures in his job for ICI, it has proved impossible for him to see his term of office out, ICI's gain is certainly the AWGB's loss. We are all sorry to see him go at a time when the recent changes within the AWGB seemed to be settling down and positive things are happening. This was one of the reasons we wanted him at the helm this year, as it was thought that the hard work he had put in would start to be rewarded with plaudits instead of brickbats.

I am sure you would all join me in wishing Tony well and thank him for his massive contribution over the recent years. One good thing is that he is not totally lost to us, as he wishes to remain on the Seminar sub-committee.

It's time for me to pick up the pieces and outline what your Committee has been up to since your last copy of 'Revolutions'. That statement is not quite accurate as Tony made mention in his last Chairmans report of our meeting on July 10th. But what you will find elsewhere in this Newsletter is a précis of that meeting, along with that of our meeting of Sept

4th. This is part of our efforts to keep every one of our members in the picture of what is going on, we know communication has been something of a weak link for some time but we are going to do our best to put this right and a précis of Committee meetings is one of the ways. A number of things mentioned in the précis's in this Newsletter are now in being or have happened.

10,000 membership application forms have now been printed and have been put to good use a recent shows, all Branches have been sent some.

The Brass and Enamel 'Woodturners' logo lapel badges are in being.

Members if they pre booked tickets to the NEC show got a bigger discount than they could have obtained any other way.

The new Constitution has been sent to all members (it was with your last issue of 'Revolutions')

The Branch Meeting has been held, and the Committee elections made.

All invited demonstrators to the 1995 Seminar have said YES.

All of these things came out of the July meetings

and a number of other things undertaken are still being worked on or on going.

All Branches now have a Handbook in loose leaf style, this contains a great deal of information and will be constantly updated and added to, Mike Dennis must be congratulated for his hard work, with valuable contributions coming from Graham Lovett and Frank Clarke.

Branches also have a number of the new simplified individual members Insurance application forms from Colin Ryan, (more information in 'Revolutions' No 30 July 1994)

The above is just a short synopsis of what has come out of the last two Committee meetings, other things have and much is on going, you can read for yourself other things noted.

I will now turn my attention to the one negative issue of this report, as it caused your Committee a great deal of concern, and left each one of us exposed financially for a brief period of time if an accident had happened a branch gathering. I see no point in sweeping things under the carpet. Happily the matter is now totally resolved and sorted out, as all Branch secretaries will know. The Insurance cover we had arranged for Branches and thought we had got, was explained by our Secretary Hugh O'Neill in the last Newsletter. Fortunately, Geoff Campbell Secretary of Cumbria Woodturners was on the ball

Chairmans report (cont'd)

and noticed an error. The Public Liability element which was meant to cover all Branch members, visitors and any one demonstrating at a Branch organised event, but in effect it only covered visitors. This was a misunderstanding not the insurers trying to be clever, and the policy has been amended at no extra charge.

I quote from the amended Schedule.

Member to Member Liability extension.

The company will indemnify in the terms of this policy.

- 1) The Insured Club.
- 2) Any member of said Club.
- 3) Any visiting team or member thereof.

That makes things very clear and we are happy that its resolved.

Branch Delegates meeting

This was held in Staffordshire on Sept 18th and what a positive meeting it was. Ten Branches were represented, Len Grantham, Frank Clarke, and myself attended as observers and answered questions, Ken Allen our Branch organiser was in the Chair. The main purpose of the meeting was to elect the Four Branch Representatives to the Executive Committee, there were eight nominations.

Delegates took into consideration when they cast their votes as stated in the Constitution (drawn to

represent the geographical spread of Great Britain), Elected were George Hunter - Scotswood, Chris Lindup - Avon, Graham Lovett - West Midlands, and Tony Witham - Suffolk, Essex & Cambridge. Those who also stood were Mark Pickering - Mid-Staffs, Mike Pursey - Kent, and Chris Wedlake - Thameside. Mac Kemp was withdrawn by Middlesex at the meeting, as a change of job meant he has little spare time, Mac has been a stalwart on the Committee for many years and a tremendous worker, all the best Mac we know we can still count on you when it comes to printing matters.

There was considerable interchange of ideas and the feeling that this was a very worthwhile meeting.

Membership

I will make comment on this as there seems to be, in some quarters at least, a misunderstanding. We have become aware of a number of people who think if their Woodturning Group is not a 100% AWGB Branch they can't be a member of the AWGB absolutely NOT SO. The AWGB is an individual member organisation but has a large number of members who belong to 100% Affiliated Branches. If you know of someone who was a member and is under this impression, explain what I have just said to them. Our Membership is very much on the increase and is getting back to its normal level

Sandown and NEC Shows:

The stands at both shows were very busy and many new members were recruited, plus quite a number of lapsed members decided to renew I am pleased to say. The Sandown Show was our normal format with work by some of our members on display, from which some sales were made. Also the residue of work donated to raise money for the Guide Dogs at Wembley earlier in the year was displayed and more sales made. Our wonderful band of stewards fielded many questions and pointed people in the right direction, be it to a supplier or where their nearest woodturning group is. The AWGB stand at the NEC show was a much bigger affair, with for the first time an advice clinic on turning, sharpening, and finishing problems being set up. The public seemed to like this a great deal as they could ask a question without someone trying to sell them anything. Yeoman service was done throughout the show by a dedicated band of members on this and the normal stand. I have refrained from mentioning names as I am sure I will miss someone out, so a big thank you to one and all for a tremendous effort at both shows.

Ray Key

International Seminar



5th International Woodturning Seminar

**The University of Warwick
11th - 13th August 1995**

Here it is, the news you have all been waiting for The 5th AWGB International Woodturning Seminar will be held, not at Loughborough, but at the entirely new venue of The University of Warwick from the 11th. to 13th. August 1995.

Once again you can expect a full, varied, exciting and stimulating programme.

- 42 Lathe demonstrations
- Slide presentations
- Trade stands
- Raffle
- Instant gallery
- Bar
- Good food
- Good company

Your presenters for this Seminar will be:

From America
From Canada
From Australia
From Norway
From UK

John Jordan
Michael Hosaluk
Richard Raffan
Johannes Reiber
Bert Marsh
Paul Clare
Bill Jones
Keith Rowley
Gary Rance

International Seminar

The University

The University of Warwick is one of the UK's most modern universities, situated in a 500 acre parkland campus. On the campus there are four banks, all with cashpoints, a supermarket, newsagent, Post Office, hairdresser and extensive sports facilities, as well as quiet woodland and lakeside walks.

Location

The University is situated at the centre of the motorway network just 10 minutes from the centre of Coventry where there is a half hourly train service to London with a journey time of 70 minutes. Birmingham International airport is only 12 miles from the University.

Accommodation

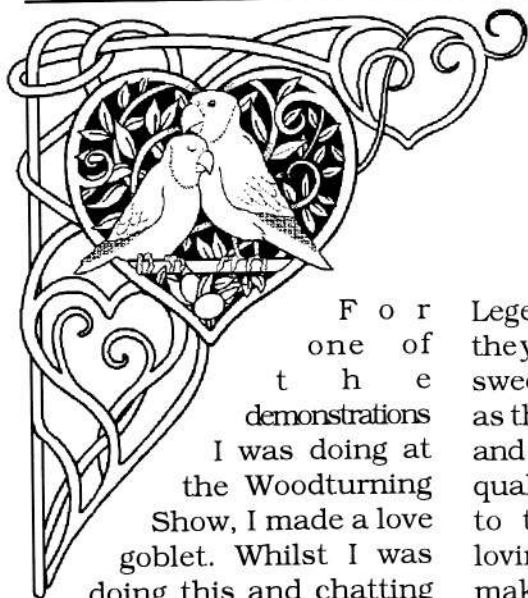
The accommodation for this seminar will be all single rooms. There will be a limited number of double rooms available and some single and double rooms with en-suite facilities. All rooms are equipped with bedlinen, washbasin, soap and towels, electric shaving point and a daily supply of tea and coffee. Each floor has kitchen facilities, toilets, showers and bathrooms. The halls of residence are all within easy and level walking distance of the restaurant and the seminar activities.

It is hoped that for the first time this seminar we shall be able to allow spouses to attend as nonparticipating members on a bed, breakfast and evening meal basis.

The University is situated in the Heart of England within easy reach of some of the country's premier tourist attractions e.g. Coventry, Stratford-upon-Avon, Kenilworth, Oxford, Warwick, Leamington Spa

Full details and booking forms will be published with the next edition of *Revolutions*.

Love Goblets



F o r
o n e
o f
t h e
d e m o n s t r a t i o n s
I was doing at
the Woodturning
Show, I made a love
goblet. Whilst I was
doing this and chatting
to various members of the
public, I was surprised to
learn that although everyone
had heard of the Welsh Love
Spoon and the traditions
associated with it, nobody
was aware of the
Woodturner's Love Goblet. so
I thought it was time to put
the record straight.

The origins of the Love Goblet
are lost in the mists of time,
but it is believed to have
begun in the Middle Ages
when the young apprentice
woodturner would make one
to show his affection for his
current sweetheart.

Traditionally the goblet is
about 6 inches tall and the
cup is about 3 inches
diameter. On the stem of the
goblet there are two to three
loose rings, these represent
the engagement ring, the
wedding ring and the eternity
ring. It is always made from
olive wood because of the
difficulty in drying this wood
and getting it to maintain its
shape and keeping it from
splitting.

Legend has it that the love of
the young woodturner for his
sweetheart will last as long
as the goblet keeps its shape
and does not split. The lasting
quality of the goblet is relative
to the amount of tender
loving care that goes into its
making.

So the young woodturner's
choice of piece of olive wood
and the number of loose rings
that he would put on the
stem would depend upon the
depth of his affection for the
maiden. If his intentions were
not really serious, then he
would choose a rather wet
piece of wood and only put
one ring on the stem. but if
he chose a fine piece of wood
and put three rings on the
stem, then this was to be for
the one true and lasting love
of his life.

I was asked why if what I was
saying was true, these
goblets are never to be seen
for sale in shops or at craft
fairs. I think it is fairly
obvious that they are not
made for selling at a profit,
but as a labour of love which
money cannot buy

When I was a young lad living
in London I made dozens of
these goblets and I also
owned a bicycle,

All over London and the

The Woodturners Love Goblet

South East of England there
are today little grey haired
old ladies with three ring
goblets in pristine condition
which they sit and gaze at on
long winter evenings and
wonder what ever became of
the golden haired youth who
gave it to them with his vow
of undying love!



So ends my tale of the
Woodturner's Love Goblet, a
tradition which I do not think
should be allowed to wither
and die. So come on all you
woodturners set to and show
the world that romance still
flourishes among the wood
shavings

If you know of other
traditional woodturning
items please write and let
us all know about them

ED

Len Gwentham

Seminar Report



Turn East 94

A report by John Holyoak

They say that nothing succeeds like success and a success indeed was 'Turn East 94' the 2nd East of England Woodturning Seminar held on Saturday the 13th August at Fakenham High School organised by the Norfolk Woodturners Society.

It had all the ingredients for success, It was a lovely day sunny warm and bright lighting up the demonstration workshops - in one some windows had to be blacked out to reduce glare

Following the opening of the seminar by John Tuck the Chairman at 10am the day was split up into 3 demonstrating periods 10.30 - 12.30 1.30 - 3.30 and 3.15 - 5.00 and the demonstrators Melvyn Firmanger, Ray Jones, Ray Key, Bert Marsh and Keith Rowley instructed and entertained the delegates throughout the day capturing their rapt attention.

Melvyn concentrated on the various aspects of hollow form techniques whilst Ray Jones covered a bowling green bowl shapes - how to get them right and why you get them wrong, the skew chisel repetition and thread cutting

all the time keeping up the light hearted repartee for which he is noted.

Ray key gave his viewers plenty to think about, with a lidded box, bowls functional & decorative and ten ways of reverse chucking.

Bert Marsh in his quiet efficient way dealt with finely turned decorative bowls & vases, whilst Keith Rowley concentrated his viewers thoughts on a long stemmed pomander incorporating a double twist, some of the problems of a pedestal table and a Windsor armchair, The five demonstrators were supported by enthusiastic delegates.

Mirrors were set up over most of the lathes giving a top as well as a side view and all the workshops were large enough to ensure ample seating and that all had the opportunity of a good view, It must be said however that very few people are taking binoculars to seminars. The advantage of this is that it enables one to get to within about 18 inches from the cutting edge and to see in detail, just what is going on, we recommend all to take them to seminars.

The traders who usually support this event were again in evidence and we thank Ashley Iles, Stobart Davies, Rustins, F.T. C of Fakenham and Special Woods of Fakenham for their enduring support.

A word of thanks must also go to Axminster Power Tool Centre and Racal for their generous gifts for the raffle, and all the others who so kindly donated raffle prizes. The Racal helmet held pride of place and the owner of the winning ticket was thrilled with it. Also thanks and congratulations are due to John Foulger for production of all the printed matter including the excellent souvenir programme.

Delegates were invited to display their work on the stage in the main hall and all were treated to a show of excellence. There is a marked improvement in quality of turning over the past few years and this was amply demonstrated in the delegates exhibits. It would perhaps be unfair to mention any in particular as the general standard was so high.

It was a day of team work and team spirit - a team of demonstrators, a team of traders and a team of organisers all working together to make the day one of the most memorable in East Anglian Woodturning. The organisation benefited from the experience of the first Turn East in 1992 and the comments following it. This time the organisation was flawless and smooth with plenty to eat and a steady supply of tea and coffee throughout the day

Well done Norfolk Woodturners Society.

Committee News

MINUTES OF THE COMMITTEE MEETING - Sunday 10th July 1994 Held at Ray Keys's. Bretforton

1. The Chairman, Tony Waddilove, opened the meeting by stating that its purpose was to sort out communications. There were, however, a few issues to pick up first.

2. MEMBERSHIP AND APPLICATION FORMS

Some changes to a draft were suggested and it was agreed that we should order 10,000 of to be printed in two colours on white. Mac Kemp to complete the work. The Chairman thanked all who had contributed.

3.0 MEMBERSHIP FEE DISCOUNTS

At exhibitions we could offer membership on the basis of "Join now and your sub covers you to the end of 1995."

4.0 BADGES

Agreed that we order the minimum quantity of badges at £1200. These to be made available through Branches on a bulk order basis. We would also sell them at shows but not operate an individual mail order system.

5.0 NEC SHOW

A £1.50 discount to members who prebook their tickets through Revolutions had been negotiated. We have a 9 by 3 metre stand. and will be offering advice on turning, finishing, and sharpening. Tony to obtain two lathes.

6.0 INFORMATION AND COMMUNICATIONS

It was agreed that a precis of the minutes should be included in Revolutions.

It was identified that all individuals need:

The years programme, Dates and details of all national exhibitions, Seminar dates, Names and addresses of committee members.

New members should get:

A welcome letter, A list of Branches with details and addresses of Secretaries, meeting dates and venues. Alternatively they could make direct contact with the Branch Co-ordinator, Copy of the Constitution, Latest Revolutions, The questionnaire, General sheet including insurance details and how to get cover, Programme of events and exhibition, Addresses of Committee members and other contacts, Lists of Videos and slide packs

Once this material has been prepared a set should be sent to all members.

We should all use official AWGB headed paper and standardize on 12 point Helvetica for correspondence.

Every Branch must have its own Constitution and each Branch member should be given a copy.

We need to tell existing members:

Who is on the committee, who is co-opted and what each persons function is. The addresses of committee members, An abridged set of minutes, Notices of forthcoming events, Note of the formation of each new Branch, Complete list of Branches with contacts. This would all be presented regularly through Revolutions or as changes are made.

A photo copy of the first two pages of the insurance policy should be sent to Secretary's of all Branches on cover. All branch cover is to be arranged through the Secretary including the signing up of non affiliated clubs. The Association is to pay all premiums for Branch/club cover and then to invoice clubs with their element. The Secretary should write clubs not affiliating and offer them the insurance scheme at £120.

The new Constitution is now in print and a copy should be sent to each member with Revolutions.

It was agreed that Branches need to know:

The procedure for collecting and returning subscriptions. This should also include a list of the names addresses and membership numbers of all members covered. The annual sub to be returned is £11.50 for each Branch member.

A Branch Co-ordinators meeting is to be held on the first or second week-end in September. The meeting will be chaired by Ken Allen with Tony Waddilove in attendance and Frank Clarke and one other committee member to "observer". Each Branch may send one delegate and mileage allowance will be paid at 17.5p per mile.

The Branches are to elect their own delegate to attend this meeting. Those Branch representatives attending will elect the four members to serve on the Committee. Persons elected will stand until the beginning of 1996.

The start up pack now needs a fundamental re-write. It should contain:

Opening letter from the Branch Co-ordinator, An index of contents, Guidance notes on setting up a branch, A suggested Branch Membership Application Form, Suggested Rules and Constitution, AWGB Constitution, Suggestions on how to advertise for membership and how to obtain "free press", A typical annual programme of events (a sample from an active Branch), Details of the Branch insurance and how to apply, The Demonstrators list, A list of the support facilities available from the AWGB, Notes on how to organise a meeting

It was agreed that the production of this pack should be on the agenda for the next Committee meeting.

We should include obituaries in Revolutions. All hearing of breavements should notify Editor

7.0. COMPUTER MAINTENANCE

A maintenance contract be taken out to cover the computers used by Len Grantham and by Mike Dennis.

8.0 POLICY

We need to identify and collect all policy decisions made at Committee since the inception of the AWGB. This will involve a search through the past minutes. Ray Key agreed to do the period during which he was in the chair. Hugh O'Neill to complete the non Ray years. We currently have four life members: Ted Wren, John Sainsbury, Ed Moulthrop, and Margaret Lester. Once the policy archive has been established we must start to consider future policy ideas and start some long term planning.

9.0 HEALTH WARNING

It was agreed that a Health Warning label be sent to all members with the next renewal notice.

10.0 INTERNATIONAL SEMINAR

Ray Key gave an update on the planning. The main issue is that we can not use Loughborough University due to major developments during the period in question. The sub committee is therefore looking at Warwick and Leicester universities, and will report as soon as there is news.

11.0 VOTE OF THANKS

A vote of thanks was recorded to Ray and Liz for hosting the meeting.

Committee News

MINUTES OF THE COMMITTEE MEETING - Sunday 4th September 1994

held at Spindles, Cooper Close, Nettleham, Lincs.

Present: Ray Key Channan, Len Grantham Treasurer, Mike Dennis, Mac Kemp, Frank Clark, Graham Lovett

Apologies received from Hugh O'Neill, Eric Ditchfield, Chris Cooke Ken Allen, Chris Lindup, Tony Waddilove.

1. MINUTES OF LAST MEETING

Minutes of the meeting held on 10th July, were agreed, subject to the following amendments:

2.0 Application forms have been completed and 10,000 printed. Supplies will be available at Sandown Park and N.E.C. Supplies will be made available for Branch Secretaries at the Branch meeting on 8th. September.

4.1 The purchase of lapel badges is in hand. It is unlikely that they will be available for Sandown Park, but they should be ready for N.E.C.

6.2 Precis of Minutes should be included in Revolutions and copied to Branch Secretaries.

6.6 2,000 copies of official AWGB notepaper would be printed as per sample provided by Mike Dennis.

7.1 Maintenance contract to be taken out to cover computer used by Mike Dennis. Mike Dennis to organise. Len's machine already covered.

2. TREASURER'S REPORT

The Treasurer reported that with the balance standing at £7,853.87 and with very little income between now and the end of the year, careful housekeeping should be followed. We are committed to a number of expenses up to the end of this year i.e. two Newsletters, badges, Branch Packs and Information/Application forms, travel expenses etc, which could lead to a very depleted balance.

3. CHAIRMAN'S REPORT

It was reported with dismay that a formal resignation had been received from Tony Waddilove, due entirely to the expansion of his business. Tony still wishes to be associated with the Association and will continue his role as a committee member of the Seminar Sub-Committee. The Committee thanks him for his efforts.

The Vice Chairman, Ray Key has agreed to act as Chairman until the next AGM and the committee expressed their thanks to him for this decision.

4. BRANCH CO-ORDINATOR'S REPORT

The Branch Delegates meeting has been arranged for Sunday 1 8th September at 1 pm at Etching Hill Village Hall and all arrangements have been made, the delegates having been notified.

Ray Key would attend the meeting on the 18th September to invite questions from the floor to the National Committee members.

Len Grantham and Frank Clarke would also attend this meeting as observers.

4. PRODUCING THE START-UP PACK

This pack is now almost complete and will be taken to the Branch Meeting on the 18th.

5. EXHIBITION ARRANGEMENTS

Arrangements for Sandown Park same as last year with sufficient people to help, some of whom are giving more than one day.

NEC Graham Lovett is liaising closely with Eric Ditchfield. The arrangements for the Advice Clinic are well advanced. There are nine volunteers to man it including Len Grantham, Reg Sherwin and Hugh O'Neill and all necessary equipment and materials have been promised. One lathe is to be provided by Apollo. The Association is again presenting a cup at the NEC for the public's choice from the competition entries.

6. SEMINAR ARRANGEMENTS

Seminar arrangements are progressing satisfactorily. The Committee requested that advance information of the Seminar be published in the November issue of Revolutions and that full details with the booking form would be included in the January edition.

7. CRAFTS COUNCIL

The Chairman read an in depth report he had received from Hugh O'Neill explaining the position of the Crafts Council.

8. ANY OTHER BUSINESS

8.1 The simplified insurance proposal forms are now available and it was agreed that these would be taken to the meeting on the 18th September when a small supply will be given to each Branch Secretary.

8.2 Both the Secretary and Treasurer having indicated previously that this was to be their last year in office, and although both are aware of the need for fresh blood to be injected into the committee, have agreed for the sake of continuity that (a) the Secretary would be prepared to serve in any capacity for a further 12 months and (b) the Treasurer would be prepared to continue also for a further 12 months provided that the work of membership secretary could be undertaken by someone else. Mike Dennis kindly volunteered to take on this task.

9. DATE AND PLACE OF NEXT MEETING

The venue for the next meeting was suggested as Bretforton, Worcs. The date will be decided at the meeting on the 18th September but is hoped to be either the 20th or 27th November.

Branch News

HI EVERYBODY.

First of all let me thank all the Delegates who attended the first meeting of the Affiliated Branches of the A.W.G.B. Every one participated in an open discussion and a full report is printed elsewhere in REVOLUTIONS. Branch news is always welcome so any events which you are organising during the coming year please let me know so that it can be circulated in REVOLUTIONS

I Wish you all A MERRY CHRISTMAS and hope you all keep doing A GOOD TURN in 1995

KEN ALLEN

West Midlands

In spite of the upheaval of the last year felt by the Association in general and by the Branches in particular, we are now in a period of calm, and striving to go forward and pulling in the same direction.

The branch has continued during the year to provide a varied programme at its regular meetings and it appears that most members have found much to their liking. Visits by Ray Key and Stephen Cooper for our one day Mini-Seminars have been popular, as I'm sure the visit of Allan Batty to us in October will prove to be.

Inter Branch activity has continued with visits to Mid

Staffs and Heart of England meetings by some of our members, and this is a direction which I feel is worth promoting and supporting.

Our community involvement has revolved around attending a local Horticultural Show in Birmingham, participating in the Woodturning Competition, and also providing a display and demonstration of woodturning in the Craft Marquee, (what peace of mind the Branch Insurance has provided!!!) This is a small but friendly show, and one really to get your competition teeth into, (that is of course if members are competition minded), and again something which is worth getting involved in, without too much in the way of expense. It is also a further exposure of our craft to the general public, and worthy of consideration by other Branches as a means of promoting themselves and woodturning. I accept that many Branches do in fact put on much larger shows, but for Branches yet to "test the water", the small show is one way to start.

What do other Branches do in the way of community involvement?

Mid Staffs

On Sunday Feb 12th at Etching Village Hall Ray Key will be demonstrating his skills. This event will be partly funded by the A.W.G.B. With

the grant which is available to all affiliated Branches. Admission to this event will be £10 which includes a Midday Lunch. Further details from the secretary Mark Pickering Tel 0785 49869 West Midlands and Mid Staffs Branches are holding a joint meeting which will take the form of an exhibition of work on March 10th at Brownhills Community School, Everybody welcome.

East Surrey Woodturners

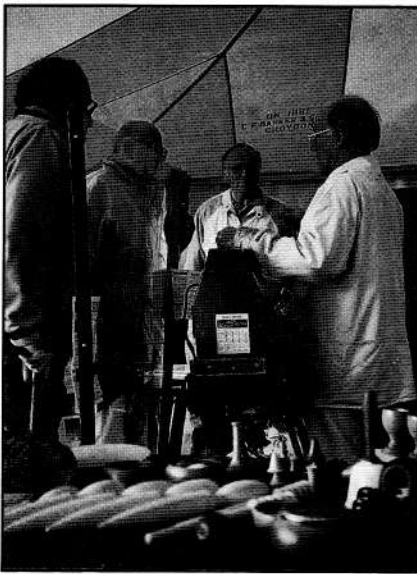
The ESW have now existed as a group for six months, with regular meetings on the last Thursday each month at the Edgecombe Community Centre Hall, Selsdon.

Recently the group has been even more active. At St John's fair on August Bank Holiday, we staged our first public event. Four members turned in turns while two others did excellent PR work. A demand for a spurtle was dealt with, as was a request for 'anything' from a stair tread from a local haunted Elizabethan school. We had many enquiries from potential members and several offers of trees.

Two weeks later saw our second public event; two days this time, at the Selsdon Forestry and Country Show. This is a large annual fair with steam engines, ferrets and log cutting displays. Our location in the main marquee



Branch News



Peter, Ted, Mike & Alan at Selsdon

was appreciated during the torrential hale storm on Saturday. Our members turned out in force, and kept the lathe going all weekend. Adrian was knocking out spurtles, and George selling them as if they both knew what they were! We ended the day clearing up after the log cutters had finished; the group gained several highly figured and spalted beech planks.

At the end of September, the third public appearance was of examples of our turning at the Sandown AWGB stand. We had also been invited to

man the stand and several of our members did sessions over the four days and thoroughly enjoyed it.

So, a busy month; we have made some money, some new friends, and increased our stock of timber. We continue to welcome visitors at our meetings. If you're interested, please ring Dave Grainger on 0819657 1895 or Neil Innes on 081-395 7734, or just come along.

Suffolk, Essex and Cambs Borders

The 1994 Seminar held on Saturday 30th July at Peter Child Woodturning Centre at Little Yeldham really began in earnest on the Friday. After many weeks of preparation a large number of members turned up to shift wood and build tiered seating for the demonstration areas. With large amounts of joviality and hard work it was completed by mid-day.

The day of the Seminar began with ideal weather for the second year running and a good turnout of Woodturning enthusiasts ready to watch the various demonstrations. The Branch Members had brought a good selection of high quality work for

display.

Ray Key gave three very interesting demonstrations, for the first one he made a Bottle Box in Cherry, the second session he dealt with rim treatment of Platters and Bowls and finally he made a Capsule Box which he later gave as a raffle prize. During his demonstrations he used five modified tools which he has been using for 15 years, these are now made by Henry Taylors.

Tony Witham also gave three demonstrations they were on the enhancement of Bowls using a router fixed in a home made jig and with the aid of an indexer fluted the Bowls. He also demonstrated a new Vacuum Chuck introduced to him by Alan Whybrow from New Zealand.

Chris Child gave two interesting demonstrations on making large Table Lamps from wet logs. Firstly he shaped the outside of the log then he hollowed it out so as to overcome the problem of splitting.

Ron Stow demonstrated three Goblets reducing in size to fit inside each other.

Throughout the day there were demonstrations of Pole Lathe Turning out on the lawn. Nick and Kathleen Abbot, who are green woodworkers and chair-makers, were demonstrating spindle work. William Wall prepared his blanks with an axe and then turned Bowls



Dave demonstrating at Selsdon

Branch News (Cont'd)

and Eric Rogers from Norfolk made three legged stools.

Throughout the day Christine Witham gave demonstrations of Pyrography.

Everybody enjoyed an extremely good buffet and barbecue ably planned by Mr and Mrs Ron Olley and eaten in the pleasant surroundings of Margarat Child's lovely garden.

During his recent visit to England Alan Wybrow, former President of the New Zealand Woodturners Association, stayed with me for two days. We had a great time in my workshop trying out some new tools that Alan had brought with him from New Zealand. One being a Vacuum Chuck which proved to be most interesting. We also had some interesting discussions on the running of a Branch.

At our Branch meeting Alan demonstrated the Mighty Midget Hollowing Tool and a small Disc Shear Scraper. Alan also used the Vacuum Chuck to hold a 15" diameter rough turned bowl which had dried and become oval. Two Branch members tried to pull the bowl off but did not succeed. After coffee break Alan showed slides of some of the New Zealand Turners work and all our members were filled with admiration for these pieces.

I am sure we all send a big thank you to Alan for a great evening.

Avon & Bristol Branch



In August Bob Barrett gave us a very interesting, informative and practical talk on how to photograph your own work simply and cheaply. It was full of useful practical tips and ideas on how to do it and what to aim for to achieve good quality composition as well as high technical quality.

October and November bring a departure from our usual meeting topics. In September we have invited a speaker from Friends of the Earth to see where we fit in the debate about the state of our planet when we hand it to our successors. In October a "friendly" accountant has been invited to talk to us about money matters related to woodturning!

The December meeting sees the repeat of a quiz with questions on anything remotely to do with wood turning! Last year the quiz prepared by Simon Keen was very successful and brought appeals for it to be repeated.

In addition to the monthly meeting programme there have been several events. Colin Hazell ran a workshop to help beginners get started and proceeds went to branch funds. Don White ran a one day workshop on "production turning" and the proceeds went to charity. Simon Keen

has run a couple of workshops for members to share his expertise and experience in making twig pots, which he admits has become an obsession for him! A workshop on hardening and tempering high carbon steel tools is planned for early December, to be presented by Chris Lindup, to give members the opportunity to repair, modify and improve old tools etc. The focus will be on how it can be done at home cheaply, simply and of course safely.

Scotswood

Scotswood have enjoyed another successful year with our usual twice yearly seminars. This year we had Dave Regester and Liam O'Neill playing to packed houses. We really look forward to our "get togethers" as, geographically, we in Scotland are what might be termed "widely distributed". We do however benefit from not only a good demonstration, but a super venue at Jean Burhouse in Dunkeld (look it up on the map - you'll see what I mean). We did think of closing down for the winter, but recently things have started to happen in Scotland - we are helping to steward the first international wood-turning seminar at Pitlochry, there is a Spring woodturning seminar at Ingliston in March, together with a woodturning show in Glasgow, for which we have been offered space to promote Scotswood.

Branch News (Cont'd)

Moving to a less cheerful topic we "lost" our founder Secretary this year, a Mr. Len Grantham (who may be known to some of you). For some unaccountable reason he decided that sub-zero workshop temperatures are not for him and has moved to England!

We were lucky though, in that his place has been admirably filled by George Hunter who not only can spell, but has a computer as well!

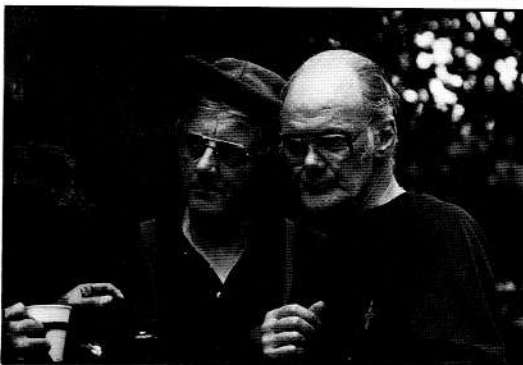
Finally, we circulated a questionnaire recently in an effort to seek members views on the future development of Scotswood, to date we have received replies from about 30% of our members -could I ask that the others take 10 minutes to complete the form and return to George.

Happy winter!

Middlesex



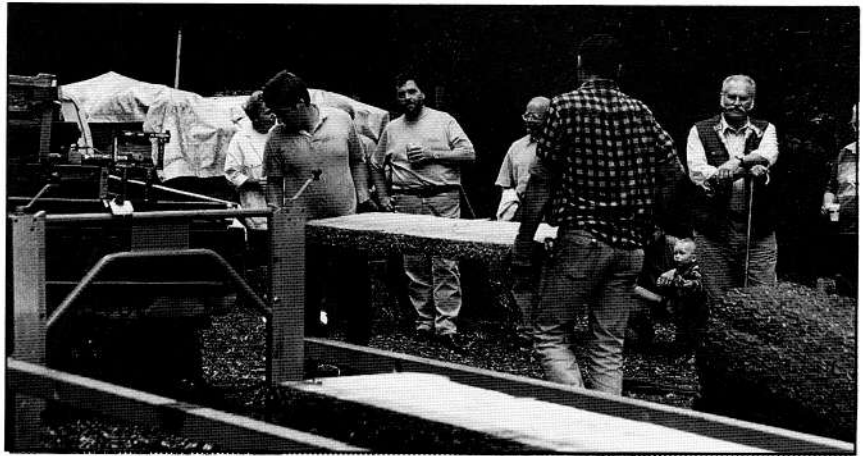
In August some 30 Middlesex members held a very enjoyable summer Bar-B-Que at the home of Dave Reeks. Dave had a tree felled



Mac & Dave in discussion with the Trekker Saw's owner



Winding down the bed for the next cut



Another plank comes off the saw

in his front garden and arranged for a Trekker Saw to be on site for the day in order for members to see one of these machines in use.

The planks being cut from the tree were available to members to purchase as indeed were slabs of wood from the Cedar featured in the last edition of *Revolutions*. Franke Clarke was in charge of timber sales,

Dave Reeks gave advice on the use of a chain saw, while Mac Kemp was in charge of the lathe which he kept turning most of the afternoon, until the food was dished up, at which time he demonstrated his own version of a 'dig-in'. The chef for the

afternoon was your editor ably assisted by Lynne Dolder who had prepared all the food. Our thanks to Dave Reeks and his wife Helen who made everybody very welcome.

Kent

Kent are to hold an exhibition and sale at the Apple Craft Centre in Kent from November 25th until 4th December. The exhibition will be preceded by a preview buffet on the evening of the 24th.



Kent member Bill Carden has been busy making Deadeyes out of *Lignum Vitae* for the restoration work on the Cutty Sark. Well done bill !!

Letters TO THE EDITOR

From Ron Stow - Suffolk

Grinding & Abrasive Wheel Act

I think members should be aware of the above Act, to be able to use a wheel grinding or abrasive wheels the said wheels must have been mounted by a certified person, if this is not the case, I feel any Public Liability Insurance will be null and void.

We at the Suffolk, Essex and Cambridge Border Branch intend to run a course with the help of the College of Further Education at Bury St. Edmunds.

I am not one to spread doom but without this certificate we could be open to major problems.

From Paul Daly - Dyfed

I write to support Melvyn Firmanger's comments regarding insurance in the last issue of 'REVOLUTIONS' and to recount our experiences in trying to obtain sensible quotes. Our own insurance (the old AWGB scheme) became due for renewal quite soon after the announcement was made that the original scheme would not be available after expiry of existing cover, due to lack of take up by members. I couldn't believe this, as it must have been the only good thing happening in the insurance world at the time! so my partner, Heather, set to work on finding a replacement and we were initially somewhat surprised by quotes of around £350. **for inferior cover.**

Worse was to follow however. Quotes rolled in for higher and higher premiums from numerous insurers from all

over the U.K.. In short, the range of quotes was from £250. **for third party liability only** to £750. for cover similar to the old scheme. You can imagine our relief when the new AWGB scheme was announced - we applied immediately.

Shortly after receiving confirmation of our new cover (which, incidentally, coincided with our renewal date exactly!) we were contacted by two further brokers. One quoted at **£800.** and the other had been unable to obtain a figure ".....because the risk is too high"!! (I dread to think what they imagine we all get up to?)

I hope this account serves as an incentive to all those out there who haven't yet taken up this new offer - it's undoubtedly a good deal and members shouldn't doubt for one moment that they really **do** need to insure their activities.

Finally, I would like to take this opportunity to thank Hugh O'Neill for pulling this one out of the hat - you've saved us a lot of money, a great deal of hassle and your work is very much appreciated.

From Albert Lain - Suffolk

You may know that I had a part in introducing Colin Ryan to the AWGB last year and I was pleased when I heard that they had secured

Bob Chapman

WOODTURNING ACCESSORIES

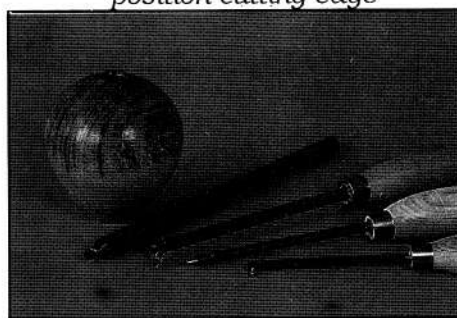
INNOVATIVE TOOLING AND WORK HOLDING PRODUCTS DESIGNED BY A PROFESSIONAL WOODTURNER

Available in four sizes, easy to use, giving even the novice woodturner the opportunity to create intriguing hollow vessels.

Also available:

Dovetailed chuck jaws
Expanding pin jaws
Light pull drivers
Bead forming tools
and many other useful items

*Hollow Turning Tools with twin
position cutting edge*



FOR FULLY ILLUSTRATED CATALOGUE SEND 9" x 6" SAE TO

B.C.W.A. 93 Parkside, Coxheath, Maidstone, Kent. ME17 4EX Tel: 0622 747325

Letters (Cont'd)

the insurance work for the Association. I learn from Chris at Colin Ryan that in addition to insurance of branches they have a pleasing number of members who have taken policies with them. I have been with them for 15 years or more for business and private.

I am writing mainly to tell you that Colin Ryan have just purchased a Carlton Chuck for the Suffolk Mid Coastal Woodturners Branch to use on one of the branch lathes. This is worth £120. + and we are very grateful to them. Perhaps you would like to tell the members through our newsletter of this.

Please mention that Colin Ryan offer a no claim discount scheme for household contents - not a common policy these days.

From Ed Brain - Cheshire

On Friday I went to the 3rd. National Woodturning Show at the N.E.C. and had an excellent day out, but what has prompted me to write to you was the wonderful atmosphere and impact of the A.W.G.B. stand.

At ten minutes past the opening time of ten o'clock the stand was packed with visitors even though it was in the furthest corner away from the entrance, and appeared to be very busy until quite late in the afternoon. About mid morning I managed to get onto the stand and had a very pleasant chat to Hugh O'Neill who made me feel very welcome and pleased to be part of the A.W.G.B. The atmosphere around the stand was one of endless smiles and enthusiasm with plenty

of interest in the demonstrations, advice clinic, and displayed work, and on the several occasions that I passed the stand during the day there was always a vibrant buzz. Before I left the show I simply had to return to the stand for a further chat with the still enthusiastic and welcoming A.W.G.B. members, and eventually returned home feeling proud to be a member of such a friendly organisation.

After returning home to my long suffering wife and explaining how the day went she said "obviously you've had a great day with the guys from the 'Shed at the bottom of the garden, club" I know it was hard work, but I hope you enjoyed it as much as I did. Well done guys!

Richard Raffan Masterclass

**The Pen y wern Workshops will be hosting this five
day event between 18 - 22 April 1995**

**Comprising a four day workshop providing hands on tuition for a limited
number of woodturners, and a one day seminar on the 22nd at which Richard
will demonstrate his skills and discuss various aspects of his craft.**

For further information including booking and accommodation details, please write to or telephone:

**Richard Rawlings - Pen y wern Workshops, Pen y wern Farm, Black Hill,
Clun, Craven Arms, Shropshire SY7 OJD**

Tel: 0588 640712 Tel/Fax: 0588 640037

Loan a lathe

Jacqui Harris - current recipient of the AWGB loan-a-lathe scheme.

Jacqui Harris has a story to tell that is a tribute to the fighting spirit and determination of both her and her husband Brian. In 1986 Jacqui suffered a serious head injury that left her with severe visual impairment.

Before 1986 Jacqui had a varied and interesting employment history. At school she worked on Saturdays grooming dogs and whilst studying A level Art at College she helped her parents run a guest house in Bournemouth. Jacqui has subsequently worked as a manageress in British Home Stores and then moved to Westminster Hospital in London to train as a nurse. She later decided to go into retail management and worked in a senior position running a large department for the Dorothy Perkins chain of stores.

Since receiving her injury Jacqui has spent many years oscillating between organisations and institutions that might be able to help her.

Whilst being given the opportunity to retrain she discovered woodturning and it became her dream to take it up seriously.

Pursuing this goal led to a succession of disappointments and obstacles that would have deterred most people - but not Jacqui and Brian. In the face of difficulty they tried very hard to seek training for Jacqui. They seemed at times to be thwarted at every turn by a combination of events and organisations that seemed to conspire to prevent her reaching her dream.

Time passed by, lots of time, and after a very long search for 8 1/2 years with continuing disappointment Jacqui's persistence bore fruit. Eventually she was put in touch with Don White who agreed to make an assessment of what Jacqui might be able to achieve. This led to a 10 day training course with Sandra Atkins. Jacqui was excited and delighted by this "turn" of events and has not looked back since.

She joined the AWGB Avon and Bristol branch. Her timing was impeccable because it was at the very time that the AWGB lathe came up for re-allocation to a deserving member. The lathe was applied for on Jacqui's behalf and the loan for a year was approved.



Jacqui has the lathe, a combination chuck and a set of high speed tools. She is hooked on woodturning and is learning fast. Jacqui received a most unusual wedding anniversary present of a grinder to complete her requirements. Oh for a wife who wants and appreciates presents like that! Lucky Brian.

The latest part of the story is that Jacqui recently entered the monthly branch competition which was to turn a bowl. Jacqui's bowl was elegantly and delightfully turned and won the approval of members sufficiently to be placed second. It should be added that the when the work is judged the maker of each entry is not known.

Jacqui and Brian attend branch meetings regularly. They have both expressed their thanks to Don and Sandra for helping her to reach her dream after a long hard struggle. They also thanks the AWGB for their part in helping her become and active turner. We are glad to help them.

