

Revolutions

THE NEWSLETTER OF THE ASSOCIATION OF WOODTURNERS OF GREAT BRITAIN

Issue No 117

June 2016

Youth Training

Jumping Jack

AGM



5-7 OCTOBER

2018

AWGB

**INTERNATIONAL
WOODTURNING
SEMINAR**

Your turn to be inspired



Wizardry in Wood

Making Windsor Chairs

Birstall Open Day



www.awgb.co.uk

A Company Limited by Guarantee - Company Number 8135399

Registered Charity Number 1150255

Corporate Members of the AWGB

For full information refer to previous copies of Revolutions or the AWGB website

Allan Calder's Sandpapers Ltd

Supplies high quality sanding abrasives of many types
01538 387738

Ashley Iles (Edge tools) Ltd

Woodturning and carving tools.
01790 763372

Auro UK

Natural Paints, wood finishes and treatments.
01452 772020

Axminster Power Tool Centre

Tools, finishes and woodturning accessories.
01297 630800

Chestnut Products

Quality wood finishes with emphasis on products for woodturners.
01473 425 878

Classic Hand Tools Ltd

Hand and power tools, books, DVDs, courses.
01473 784983

Crown Hand Tools Ltd

Range of fine woodworking handtools.
01142 612300

English Hardwoods

English Hardwoods.
07979 251497

Exotic Hardwoods UK Ltd

Quality exotic hardwoods.
01298 815338

G & S Specialist Timber

Suppliers of timber, tools, lathes and accessories.
01768 891440

Goulden Hardwoods

Air dried English hardwoods in slab or round waxed blanks.
07891 592067

GPS Agencies Ltd

Alternative ivory, horn and black ebony.
01730 233366

Henry Taylor (Tools) Ltd

Woodturning and woodcarving and woodworking tools.
0114 234 0282

Hope Woodturning

Woodturning tuition, demonstrations, tools and accessories.
01206 230694

John Davis Woodturning Centre

Timber, Machinery, Woodturning Tools and Craft accessories. Tuition.
01264 811070

Lovell Workwear Ltd

Protective smocks & aprons.
Can be personalised.
02920 598327

Max Carey Woodturning Trust

A registered charity educating the public in woodturning.
07976 402960

Mirka (UK) Ltd

Surface finishing products and tools including abrasive discs, strips and rolls. Power tools and accessories.
01908 866100

Bob Mortimer Woodturning

Woodturning services for joinery, building and restoration, furniture and Cabinet makers.
01889 578838

Olivers Woodturning

Woodturning tools, finishes, blanks and on-line woodturning club.
01622 370280

Robert Sorby Ltd

Tools, lathes, and accessories.
0114 225 0700

Rustins Ltd

Wood finishes, decorating products, sealers.
020 8450 4666

Snainton Woodworking Supplies

Everything for the woodturner.
01723 859545

Southern Filters Ltd

Workshop supplies including Mirka Abrasives, Abranet and Q-silver Air Fed Masks.
01297 33860

Stiles & Bates

Comprehensive Woodturning Supplies since 1996.
01304 366360

T&J Tools

Abrasives and sharpening products.
07973 576554

The Toolpost

One stop resource for craftsmen and women around the world.
01235 511101

Turners Retreat

Complete range of woodturning tools and courses.
01302 744344

W.L. West & Sons Ltd.

Timber, Machinery, Turning and carving tools, accessories, books and woodturning courses.
01798 861611

Woodturning Magazine (GMC Group)

Best selling magazine for woodturners. Suppliers of books, DVDs & magazines
01273 402871

Yandle & Sons Ltd

Everything for the woodturner.
01935 822207

Revolutions

Copy deadline for
the next edition of
Revolutions
1st August 2016

Front Cover

Yarnfield Park, Stone
the new venue for the
AWGB International
Woodturning Seminar in 2018

DATA PROTECTION ACT

Your personal details are held on computers belonging to Executive Committee members. Your details are held purely for the use of the Association and are not passed on to any third party. If you object to your name, address, telephone number and e-mail address being held in this manner then please contact the Secretary.

The AWGB is a Company Limited by Guarantee and a Registered Charity. It is administered by a group of elected Trustees who are also Directors of the Company. The Trustees meet at least twice each year and at the AGM. When they meet together they are known collectively as the "The Executive". Additionally, there are a number of people who assist the Trustees in their duties. These people are not elected and are known as "Volunteers".

TRUSTEES OF THE EXECUTIVE

President

Ray Key
The Firs, 53 Weston Road,
Bretforton, WR11 7HW

Chairman

David Atkinson
87 Whirley Road,
Macclesfield, SK10 3JW
07810 648344
chairman@awgb.co.uk

Vice Chairman

Sam Webber
Serendipity, Hawthorne Close,
Grateley, Hampshire, SP11 8JL
01264 889784
vicechair@awgb.co.uk

Secretary

Mr Mike Glover
12 Grosmont Grove
Hereford, HR2 7EG
01432 378205
secretary@awgb.co.uk

Treasurer

Jeff Belcher
Nant Ceiriog, Watery Lane,
Monmouth, NP25 5AT
07798 746296
treasurer@awgb.co.uk

Membership Secretary

Ryan Davenport
30 Garendon Road
Coalville, LE67 4JA
07983 630898
membership@awgb.co.uk

Webmaster & Data Manager

Paul Hannaby
Windrush, High Street,
Drybrook, GL17 9ET
01594 544417
webmaster@awgb.co.uk

Development & Training Officer

Peter Bradwick
183 Llantarnam Road,
Cwmbran, NP44 3BG
01633 873640
development@awgb.co.uk

Trade & Business Liaison Officer

Russell Gibbs
121 St George's Avenue
Daisy Hill, Bolton, BL5 2EZ
01942 811169
trade@awgb.co.uk

Newsletter Editor

Sheila Hughes
49 Essex Street
Newbury, RG14 6QR
01635 45930
editor@awgb.co.uk

REGIONAL REPS

Scotland

David Willcocks
91a Easter Bankton
Livingston, EH54 9BE
07738 169561
scotrep@awgb.co.uk

North

Adam Evans
33 Emmett Street
Barnton, Northwich
CW8 4LP
Mob: 07941 743269
northrep@awgb.co.uk

Midlands

Ryan Davenport
30 Garendon Road
Coalville, LE67 4JA
07983 630898
westernrep@awgb.co.uk

South East

Colin Smith
130 Broad Oak Way,
Stevenage, SG2 8RB
01438 727495
serrep@awgb.co.uk

South West

John Montgomery
150 Cleeve Drive, Ivybridge,
Devon, PL21 9DD
01752 894083
swrep@awgb.co.uk

VOLUNTEERS

Workshop Training Coordinator

Brian Hensby
Landora, Crewkerne Road
Raymonds Hill, Axminster
EX13 5SX
01297 34115
brianhensby@awgb.co.uk

Youth Training Coordinator

Ron Caddy
Studio 9, The Fairground
Craft & Design Centre
Weyhill, Andover
SP11 0QN
Tel: 07903 313065
Tel: 01264 350323
acorncrafts@fiscali.co.uk

Health and Safety Officer

John Boyne-Aitken
27 Rock Road, Trowbridge,
BA14 0BS
01225 752373
hs@awgb.co.uk

Chairman's Notes

Dave Atkinson

It's been a funny few months! I was Treasurer and in September moved to the relaxing role of Vice Chairman (Sam will tell you!) and in March I was voted as your new Chairman.

Much of what I could say here is contained within my Chairman's Report from the AGM so I'll try not to repeat myself too much. I want to express our thanks to Andy Coates for his splendid work over the years on the committee, as a Trustee and latterly as Chairman. We all wish him well.

I also want to thank Brian Partridge who retired as the Regional rep for the South East Region after 16 years' service and also to Peter Carless for his work in the Midlands for the last 6 years. A big thank you to both. Both were presented with a small gift from the Trustees at the AGM. We also had a collection for Andy and sent him a case of wine which I expect he will have drunk by now!



Moving on I want to Welcome Colin Smith as the new Rep for the South East and also Adam Evans who we co-opted at the AGM as Regional Rep for the North. Russell hasn't gone anywhere – he's moved on to concentrate on the Trade and Business role.



Adam Evans



Colin Smith



A selection of work on display at the AGM



Dave presenting Cliff Lane with his prize for the Chairman's piece at the AGM.



Seminar 2018

Since the last International Woodturning Seminar at Loughborough last year the Trustees have been considering how to improve the seminar and provide a more exciting and different option for the attendees.

We have found a brand new venue – Yarnfield Park, just outside Stone in Staffordshire. Close to the M6 Yarnfield is an ideal location. The main building which contains the restaurant, bar and meetings rooms for the presentations is around 100 yards from a very large car park and 100 yards in the other direction to the accommodation which is at a very high standard. You can take a virtual tour by looking at their website www.yarnfieldpark.com



We surveyed the membership and taking on board their feedback we have moved the event from its usual August weekend to October.

The next Seminar will be held on Friday 5 – Sunday 7 October 2018. We will start with lunch on the 5th and finish with lunch on the 7th.

We are still planning the demonstrator line up but we are hoping to have two from the USA, two from Ireland, three



from mainland Europe and three from Britain. In addition to the presentations we will be holding a number of masterclasses running alongside the presentations where attendees can learn specific techniques. The masterclasses will be booked on a first come first served basis but will be free of charge.

Friday night will be a free evening for attendees to chat in the comfortable bar area. On Saturday evening we will have an informal dinner followed by presentations and the auction, which raises funds for our development fund.

There will be a great selection of traders, some new faces and of course, the ever popular Instant Gallery from which we'll be choosing 50 or 60 pieces for our travelling exhibition.

Costs have yet to be finalised but we are expecting the full weekend, including accommodation and meals to cost around £425 inclusive of VAT.

Keep an eye on our Facebook page and the forum as we'll release regular updates about the presenters.

Make this a date on your diary and start saving now – you won't regret it!

Wizardry in Wood

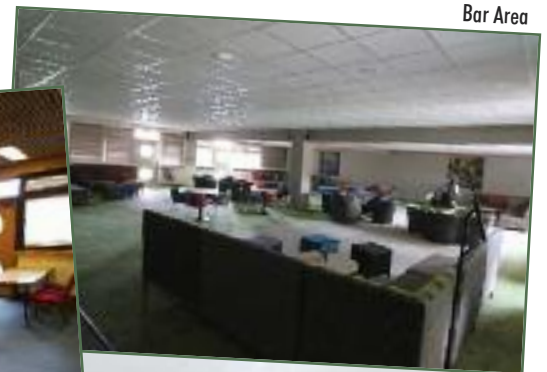
Don't forget Wizardry in Wood this year. There are competitions for all AWGB members to enter and two specific competitions for Junior Members (up to and including 21 years of age).



Reception area



Lecture Room



Bar Area



Bedroom



One of the Dining areas



Car Park



Accommodation buildings

Minutes of the AWGB AGM 2016

14.00, Sunday 24th April 2016

at Oddington Village Hall, Gloucestershire



1. **The Chairman welcomed all those present.**
2. **Apologies for Absence** - had been received from John Boyne-Aitkin, Brian Hensby, Russell Gibbs, Graham Lovett, Peter Bradwick, Dave Brookes, Peter Martin, Tony Southey, Ryan Davenport and Brian Gibbs.
3. **Acceptance of the Minutes of the 2015 AGM** - It was proposed by E Taylor, seconded by J Smith and carried unanimously that the Minutes be accepted as a true and accurate record of that meeting. The Chairman signed them accordingly.
4. **Matters arising from the Minutes of the 2015 AGM.** There had been no matters arising.
5. **Treasurer's Report for the year ending 31st December 2015** - The Treasurer gave an overview of the accounts and explained the loss of 10K due to the seminar and that could not continue, but more on that would be in the Chairman's report.
6. **Chairman's report** - Firstly, I'd like to welcome you all to the AGM. Thank you for taking the time to support us.

The last 12 months have been a period of significant change for the Association. I managed to get rid of my Treasurer job to Jeff Belcher – thank you Jeff - and settled into the role of Vice Chairman in September. During that time Andy Coates found that the demands of the AWGB on his personal and work time were becoming excessive and he stepped down as Chairman on the 29th February this year. My fellow Trustees voted for me to take over that role and I must thank them for their confidence.

This triggered a shuffle of jobs with Sam Webber passing Secretarial duties to Mike Glover and moving to the Vice Chairman role.

Thank you all for your support and enthusiasm for these new roles.

I would like to record not only my personal thanks but also those of the AWGB to Andy Coates for his efforts over the last 10 years as an active member of the committee, as a Trustee and for the last three years as Chairman.

"2015 has been a year of successes for the Association. At the last AGM we launched the Let's Teach Turning training course. This has been widely applauded not only in the UK but also from our colleagues in the States and Australia. I'm delighted to let you know that it is being used in development programmes in both these regions.

Within the UK Peter Bradwick developed an assessment module and we have run several assessment days, increasing the pool of assessors and awarding the AWGB Tutor badge to a number of our members.

Last year we had the Seminar, which proved to be a

very successful event in terms of content. Sadly, we didn't get the numbers we needed to break even and we made a loss of £10,000.

The Seminar is the Jewel in our Crown and widely applauded by all those that go but we felt at the time that proceeding with another Seminar in 2017 on the same basis would deliver the same result. Therefore, we took the opportunity to postpone the Seminar until 2018 and set about a programme of research to find out the views of the membership and search for a new venue.

We contacted fifteen venues and after much analysis we have settled upon Yarnfield Park Training and Conference Centre which provides value for money, an improved venue experience, effectively everything is under one roof.

Having reviewed the survey results we have moved the date to October and the seminar will be held between the 5th and 7th October 2018 – get that date in your diaries.

We will have an updated programme, starting with Lunch on Friday the 5th and finishing at lunch on the Sunday. We aim to have two presenters from the USA, three from Ireland, three from mainland Europe and two from Britain. On the Saturday evening we have replaced the banquet with an informal dinner followed by presentations and the auction, which pays for our development activities.

In order to make the seminar affordable we have decided to donate £6,000 from the Charity to contribute towards the cost of presenters. This means that we are anticipating a total cost for the Seminar of £425 inclusive of accommodation and meals. Start saving now!

Next year, the AGM will be held at Yarnfield giving you all the opportunity to see the venue at first hand.

In July last year I was contacted by Robert Craig, a member from North London Branch, and a solicitor by profession. He told me that the Trustees of a Trust he is connected with had agreed to donate to the AWGB the fantastic sum of £10,000 to be used to help our members, and prospective members, take up or advance their woodturning journey. The fund will be used to support individuals and organisations who would like to undertake some woodturning activity but do not have the funds available. The fund will be called "The Roger Stewart Fund" named after the founder's late husband. The Trustees would like to thank the trustees of the charity for supporting AWGB, and thank Robert Craig for this introduction.

We have made awards totalling over £1200 from the fund so far this year.

We have reviewed our finances and decided to increase the Demonstrator Grant to £250 per Branch from

2017. Furthermore we have agreed that any Branch may request their grant to be carried forward into a second year. Carry over will only be allowed for one year.

Next year, 2017, is the 30th anniversary of the AWGB's formation. We have considered a number of ways in which this can be celebrated. So that the majority of the membership can take part we have decided to make twenty grants of £300 available to any Affiliated Branch or Associated Club to help them run a 30th birthday party event. This can be a special demonstrator, an open day – the choice is yours. We'll be publishing the details of how to apply in the next few months. We would like those branches and clubs who have taken the grant to send in photos, ideally with a banner in the background depicting "AWGB 30th Anniversary" and a short write up of their event.

Before I finish I'd like to mention the Member Development Programme. This is run by Peter Bradwick and he has planned and delivered a range of events in the last 12 months, and he has put a lot of effort into planning an interesting programme of events for the remainder of this year. If you know of any venues we could use for training, or you have any suggestions for possible training course topics please get in touch.

So to conclude I believe the Trustees have done a good job over the last 12 months to maintain the AWGB and keep it fresh and worthwhile. Going forward I want this momentum to be maintained and even increased.

We are a member association and sadly we don't hear as much from the membership as we would like. I'd like to see that change over the next few years and it is my intention to move the AGM around the county to encourage all the Branches to send representatives. This starts next year with the AGM at Yarnfield.

7. **Announcement of the result of ballots for Trustees.**

7.1 **Election of General Trustees:** The Chairman reminded those present that as the AWGB is a Company and a Charity, the Executive comprises 6 General Trustees and 5 Regional representative Trustees.

7.2 **Election of Regional Representative Trustees:** The Chairman reported that:

7.2.1 Brian Partridge was standing down as South East representative and Colin Smith had volunteered to take the post.

7.2.2 Peter Carless was standing down as Midland representative and Ryan Davenport had volunteered to take the post.

7.2.3 There being no other nominations, the foregoing were elected.

8. **Vote on the appointment of Independent Accountants and Auditors for the AWGB.**

The Treasurer reported that our accountant is Campbell Wilson of Howard Wilson, 36 Crown Rise, Watford, and Herts. WD25 ONE whom he proposed that we continue to retain. The proposal was seconded by Dave Atkinson and was carried unanimously.

9. **The result of the ballot on any resolutions.** There had been no such resolutions.

10. **Report on Development and Training.** The following report was given in the branch secretary's meeting in the morning and is included here for completeness

Member Training Workshops

Workshops currently advertised on the website...

8th June 2016 - Paul Howard/Brian Partridge – Tiptree, Essex. Basic Spindle and Faceplate Work - Beginners

10th August 2016 - Mark Hancock – Tiptree, Essex Log to Bowl; Green Woodturning - Intermediate

'Special Two Day Course'

6th and 7th July 2016 - Stuart Mortimer – Grateley, Hampshire. Spiral Twists - Intermediate/advanced

16th July 2016 - Andrew Hall – Crook, County Durham. Small Hats - Intermediate/advanced

29th October 2016 - Mark Hancock – Pershore, Worcestershire. Techniques of Hollowing a Closed Form - Intermediate/advanced

19th November 2016 - Jay Heryet – Cwmbran, Torfaen. Thread-Chasing - Intermediate

To be advertised in the next edition of Revolutions...

'Special Two Day Course'

3rd and 4th December - Nick Agar/Mark Sanger – Portishead, Bristol. Artistic Woodturning - Intermediate (*Event has been changed since the AGM meeting*)

Brian Hensby has contacted the Secretary at Furness WT, awaiting a reply.

We welcome requests from the membership for training courses. Once we receive a request we will endeavour to organise a course around that topic.

Instructor Training

A total of 29 candidates have been successfully assessed as approved tutors. There are a number of applicants awaiting assessment.

As much as possible; venues for assessments will be arranged near to where the assessors are located.

We have had accolades for the 'Lets Teach Turning' CD from both the USA and Australia. Also requests for guidance of implementing a tutor assessment programme for their members.

Certificate in Woodturning

Current delivery centres...

The Max Carey Woodturning Trust Portishead

Orchard Community Education Centre Bristol

Torfaen Community Education Centre Cwmbran

Building Crafts College Stratford London

Help The Heroes Rehabilitation Centre Phoenix House Catterick

Axminster Skill Centre Axminster

To date we have 25 successful completions with an additional total of 46 candidates working toward the Certificate.

Centres due to start delivering...

Andrew Hall County Durham

Paul Howard Essex

Axminster WT Club Axminster (Lead by Brian H)

Subsidised courses funded by the AWGB and WCT.

3 way funding AWGB one third - WCT one third - Candidate - one third

4 candidates each pay £150 each for 6-day course.

The following has been arranged and will be advertised in the next edition of Revolutions...

Venue: 5 Well Bank, Billy Row, Crook, County Durham, DL15 9SP

Tutor: Andrew Hall

Dates: February 18th and 19th March 18th and 19th May 6th and 7th 2017

A second course is to be arranged as soon as possible. We are looking at possible venues at either Birstall in Yorkshire or Paul Howard in Essex.

Youth Training

Workshops currently advertised on the AWGB website
27th August 2016 - Stuart Mortimer - Grateley Hampshire
1st October 2016 - Andrew Hall - Crook County Durham
More to be announced shortly for the autumn

11. **Any Other Business** Ray Key Executive President brought to the meetings' attention the next WCT Wizardry in Wood event and asked for competition entries. He explained changes from previous event.

A vote of thanks was recorded for both the exemplary meals provided over the years by the caterers and the work of the Executive throughout the year. A presentation was given to Brian Partridge and Peter Carless for their service on the Executive for many years.

12. **Date of next AGM** This is set for 23rd April 2017 and will be held at Yarnfield Conference Centre, Staffordshire. The site for our 2018 Seminar.

13. **Closure of the meeting.** There being no other business, the Chairman closed the meeting at 14.45hrs

Treasurer's report to the AGM

There has been a change in the reporting requirements for organisations like ours which have wholly owned subsidiaries - we have the AWGB Charity account and the AWGB Trading account. The change involves the way our Trading and Charity accounts have to be consolidated and presented in order to be compliant with the new rules for the presentation of accounts to Companies House and the Charities Commission.

The accounts have been examined in the usual way and separate draft accounts produced and presented by our accountants. These draft accounts have been approved by the Trustees but cannot be formally signed off until we get the consolidated accounts presented in the required new format. Our accountants are working hard to get the software fixed to enable the reports to be produced in the required new format. It is understood that this is a significant problem which is not only affecting us.

In outline the draft accounts show the state of the funds at 31 December 2015 as:

Charity account:

Development Fund	£11,487
Grant Fund	£16,000
Main Fund	£60,469
Total Funds	£87,956

In contrast the Trading account is carrying a loss of £12,396

To put this year's changes into context the overall the value of the Charity account has risen significantly:

2014	£56,532
2015	£87,956
Increase	£28,424

The value of the Trading Account has shown an increased deficit following last year's Seminar:

2014	(£2,141)
2015	(£12,396)
Increased deficit	(£9,745)

This significant boost to our funds comes from 2 main sources:

1. a very Generous donation of £10,000 to help our members take up or advance their woodturning.
2. receipt of some £5,400 in Gift Aid.

Following agreement amongst the Trustees, the Association is allocating some of our funds to specific new tasks and projects. These are explained further by the Chairman's report but in outline they are:

1. the Demonstrator Grant to be increased to £250 per Branch from next year.
2. Branches will, on request, be permitted to carry over any unused Demonstrator Grant for one year from the end of this year.
3. A Fund of £3,000 is to be made available to encourage Branches/Clubs to run an AWGB 30th Anniversary "event" in their area.
4. £6,000 is to be committed to assisting with the cost of presenters for the 2018 Seminar.



The combined effect of all these items is that, as an Association, we are financially sound and we have sufficient funds to promote our craft and support our members in a variety of ways in line with our Charitable Objectives whilst ensuring that we maintain our reserve of £20,000.



Dear Dave

I am writing on behalf of the Nene Valley Turners Woodturning Club to thank you very much for sponsoring us with the long term loan of a lathe, stand, chuck and accessories and also, for funding the equipment insurance for the first year. We can't express what a huge help this has been to us; we started with nothing and now we can share this great benefit with all our members.

The numbers of members are growing each month; we are now up to 25 fully paid up members, a great achievement in just six months. We have applied for funding with the National Lottery to obtain some audio-visual equipment. At the moment we have manage to borrow some from various sources.

We have a full programme of turning events booked for the year 2016 and are now looking at 2017 for a great future for the club. Thank you once again.

Yours sincerely

Sue Cattell

Secretary

Ise & Nene Valley Turners

Pepper Mills
Nutmeg Graters
Tools etc.

Sole distributor of
Cole & Mason
mechanisms and parts.
UK craft agent for
CrushGrind

Constable Woodcrafts
Tel/Fax 01206 299400
e-mail: brianfitzs@aol.com
www.peppergrinders.co.uk

PRESS RELEASE PRESS RELEASE PRESS RELEASE PRESS RELEASE

AXMINSTER
Tools & Machinery

Turning it up at Axminster stores with Mark Sanger



Mark Sanger, recently crowned champion at the Ten Turners Turning event at Axminster Tools & Machinery Nuneaton in March earlier this year, is going on tour.

Mark will be demonstrating at all the Axminster stores over the course of the next few months, starting at Warrington on 18 June and culminating in a meeting with Richard Findley (2014 Ten Turners winner) on 4 March 2017.

Mark's work features wood, mixed media, texture, form and

colour all of which are influenced by Far Eastern philosophies and cultures as well as the natural forms and textures found in nature.

About his work, Mark says: "My work is free flowing of simple form. I believe that it should evolve from the here and now, from the initial idea to completion. I may have an idea about what I am going to create, but beyond this my mind is kept open and receptive to changes that evolve along the way. On occasions it may take a different path than intended".

Mark will be demonstrating from 10.00am to 4.00pm at the Axminster stores on the following Saturdays:

2016

18 June – Warrington • 9 July – Basingstoke
27 August – Axminster • 17 September – Sittingbourne
15 Oct – High Wycombe • 12 November – Cardiff
10 December – North Shields

2017

4 March – Nuneaton

Keep up-to-date with all the latest news about these events by visiting axminster.co.uk and following Axminster on Facebook and Twitter.

Jumping jack

David Springett



Here's an idea which is simple to make, uses small pieces of wood, can be turned in no time, and is a good money spinner.

Unfortunately I cannot claim to have invented the puzzle but I have changed it so that it can now be fully turned. If you look at the photo above you will see a variation I have added to make the puzzle even more difficult.

This puzzle consists of a cylinder, or cup, in which sits a small bullet shaped plug. The aim is to remove the plug from the turned cup but there are rules to be followed which must not be broken.

The Rules.

1. The cup **MUST** remain in contact with the table upon which it is placed.
2. The cup may be handled.
3. The cup may be rotated.
4. The table may be banged, slapped or tapped.
5. No tools or implements may be used to help remove the plug.
6. Water or any other liquids may not be used.

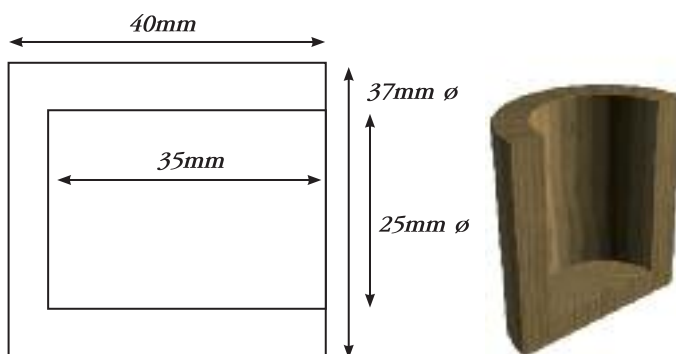
What you will need

For the cup.

- A hardwood blank 80mm long by 45mm square

For the bullet shaped plug.

- A hardwood blank 80mm long by 25mm square.
- A driving dog and revolving centre.
- The usual selection of turning tools.
- A 25mm sawtooth drill or Forstner bit.
- A Jacobs drill chuck.
- A 3 or 4 jaw chuck.



Dimensions for the cup.

The cup.

Take the 80mm by 45mm square hardwood blank and set it between centres. (Photo. R02)



R02. Blank set between centres.

Turn to a clean 40mm diameter (Photo. R03)



R03. Roughing down blank.

At the tailstock end turn a small tenon which will fit in your own chuck. (Photo. R04)



R04. Turning the small tenon at the tailstock end.

Withdraw the tailstock and set the toolrest across the face of the work.

Carefully turn the end face clean and true. (Photo. R05)



R05. Facing the end of the blank.

Fit a Jacobs chuck, holding a 25mm sawtooth drill, into the tailstock.

On that sawtooth drill mark a position 35mm away from its cutting edge. (Photo. R06) Drill into the blank to that marked depth. Take care to remove the drill regularly so that it does not overheat and crack the blank.



R06. Drill to a depth of 35mm.

From the drilled face measure 40mm towards the chuck marking a pencil line at that position. Use a parting tool, cutting on the chuck side of the line, to permanently mark this position. (Photo. R07)



R07. Making a permanent mark 40mm away from the drilled end.

Round over the edge on the chuck side and then, leaving about 2 or 3mm's and using a small skew, round over away from the chuck creating a small bead. (Photo.R08)



R08. Turning the bead.

With a 9mm gouge lightly turn about 1mm off the body of the cup and up to the turned bead. (Photo. R09)

Sand and polish, (Photo. R10) then carefully part off at the chuck end. (Photo. R11)

Use the remaining piece, held in the chuck, to turn into a good tight jam chuck. (Photo. R12)

Slide the cup onto the jam chuck then gently turn the end face. (Photo. R13) Sand and polish.



R09. Turning 1mm off the blank.



R10. Sand and polish.



R11. Part off.

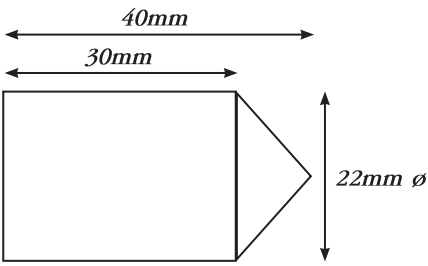


R12. The Jam chuck.



R13. Lightly turning the underside.

THE BULLET SHAPED PLUG.



Dimensions for the bullet shaped plug.



A cut away section showing the plug set in the cup

Take the 80mm by 25mm square hardwood blank and set it between centres. Turn it to 25mm diameter.

At the tailstock end turn a small tenon which can be held in a chuck. Remove the blank. Remove the driving dog and replace with a chuck. Grip the turned tenon in the chuck making sure that the work is centred.

Carefully turn the blank to 22mm diameter. (Photos. R14 & R15)



R14. Turning the bullet blank to 22mm diameter.



R15. Checking the diameter of the bullet blank.

From the tailstock end of the blank measure, towards the chuck, 40mm permanently marking the chuck side of this line using a parting tool.

Again from the tailstock end of the blank measure 10mm, towards the chuck, and mark with a pencil line.

Using a 9mm gouge turn from this mark creating a pointed end on the blank. (Photo. R16) When satisfied sand and polish. (Photo. R17)

At the marked point (40mm away from the pointed end) part off. Make sure that this parting cut is slightly undercut to ensure that the plug will stand easily. (Photo. R18)

Photo. R19 shows the finished bullet shaped plug.



R16. Turning the point.



R17. Sanding and polishing the bullet plug.



R18. Parting off.



R19. The completed bullet shaped plug.

Now all you do is place the plug, point up, into the turned cup. Making sure that you do not break any of the rules described at the beginning of the project try to remove the plug. It can be done.

If you are having difficulty then see the 3 photographs on page 23, but do try to solve the problem first. It really is quite simple when you know how.



We are now a UK supplier of Hampshire Sheen

Hampshire Sheen

150ml £9.98
250ml £16.99
400ml £22.99

A quietly discerning lustrous polish producing a quintessentially British finish.

I'm Supporting
UKIWS
Coventry, 18th and 19th June 2016
UK & Ireland Woodturning Symposium
www.ukiws.co.uk



We have a large range of blanks



INDASA



Hope woodturning

Robert Sorby



Ashley Iles
woodcarving & turning tools
made in the old tradition



Olivers Woodturning supports the AWGB



The Association of Woodturners of Great Britain www.awgb.co.uk

Turning for All Ages!

Liz McFarlane

The Birstall Woodturning Club's new lottery funded Audio Visual Facilities and Open Day officially got under way when the senior member, 91 year old Hubert Spence, performed the opening on Sunday 24th April. Hubert said he was proud to be asked to open the proceedings and he then presented Martin Brockley with a plaque to commemorate his becoming Turner of the Year for the third time running. After completing his duties at the Club Hubert then went on to Morley to attend the St Georges Day event where the Turning club was taking part.



About 150 people attended the Open Day where there were demonstrations by members on subjects such as giant turning, segmented turning, pen turning, deep hollowing, power carving, marbling, pyrography and spin painting. In addition there was a superb show of beautiful work produced by members. Turnings were also available for sale and the small animals and fruit forms proved very popular with the younger visitors.

It was a great opportunity for the Club to welcome the AWGB – Russell Gibbs – and for Club members to learn more about the excellent work and services provided by the organisation.



A number of people took the opportunity to 'have a go' at turning and this young man was thrilled with the result! Katie, one of the Scouts has already become a very active member of the club.

Lady members were very active both in turning and other activities especially the provision of very tasty snacks and cakes available throughout the day.

It was a happy day where lots of people had fun, a hobby for people of all ages, thank you to all who took part!

If you would like to part of this dynamic organisation ring Liz on 01924 274515, e-mail the club on

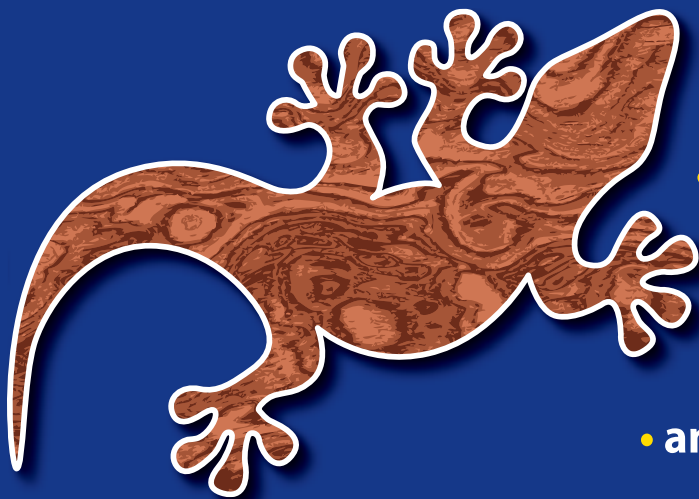
The Club was lucky to be able to welcome their visiting exhibitor the West Riding Carving Association who showed a magnificent and varied display of carvings.

The local Scouts and Rangers had a tent with varied activities on offer and their young members took an active part in the proceedings. They take part in turning courses throughout the year and there is stiff competition for places.



birstallwoodturners@virginmedia.com
or visit our website at
www.birstallwoodturners.wordpress.com
or you could pay us a visit at
Unit 46, Holme Bank Mills, Station Road,
Mirfield WF14 8NA
Mon – Thurs 9.00 – 15.00,
Sat 9.00 – 12.00 or Wed evening 19.00 – 21.00 when
there will be someone there to make you welcome.

Exotic Hardwoods UK Ltd

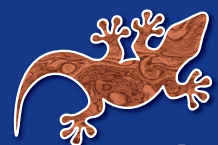


We specialise in supplying quality exotic hardwoods for:

- wood turners
- snooker & pool cue makers
- longbow makers
- guitar & musical instrument makers
- antique furniture restorers

Unit 3 Bowden Hey Road,
Chapel en le Frith, High Peak, SK23 0QZ

Contact us today on 01298 815338
www.exotichardwoodsukltd.com



exotic
hardwoods uk

Worshipful Company of Turners



4th Wizardry in Wood Exhibition & Biennial Competitions

Ray Key

In the March issue of Revolutions I drew your attention to the many competitions that were open for you to enter, at the same time cajoling more of you to consider entering.

I am on your case again; there are some very impressive prizes on offer.

All young turners who have been on the **WCT/AWGB sponsored Young Turners Training days** and are still eligible to enter both the **Young Turners and Ray Key Special Young Turners Competitions** can expect to be contacted soon, one hundred and forty two of you have been identified. Remember the age limit is now **21 years or younger** lifted from 18 years.

Since I wrote that piece the full details of all the competitions are there for you all to see on the very impressive **www.turnersco.com website**. Click on **Turners Company 2016 Competitions** there you will find all you need to know with regards the **Rules & Conditions, plus the entry forms**.

The packing notes and delivery possibilities accompanying this article offer more guidance.

When you visit the **www.turnersco.com** website visit the **Wizardry in Wood dedicated website**. There you can select from the header of **Sponsorship/Exhibitors/ Special Exhibits/ Competitions/Venue/Tickets**. Each element will give you a greater insight of what you can expect when you visit the event.

Wizardry in Wood

Art • Beauty • Skill • Mystery



Individual exhibitors taking part this time, total twenty six in all, seven more than in the past, all will be offering their work for sale. Eight of these twenty six will be shown **on a Collective stand** thus adding more diversity. Each of the twenty six makers has their PR and images of their work for you to view once you click on Exhibitors.

From Kew Gardens comes the **Economic Botany Collection**, founded in 1847 by Sir William Hooker, **100 examples** from this collection will be on show for the first time to the public in London. There will be specimens of woods that are no longer available.

The Daniel Collection of modern turning is guaranteed to be impressive with thirty of the works selected from overseas makers.

Also exhibiting will be the Livery Wood Group and the WCT's Charity Display.



Photo by Stuart King

The AWGB will have the selected works from the **2015 International Seminar** and works from some of the excellent young turners within our ranks.

The Society of Ornamental Turners and the Register of Professional Turners will each have stands.

Young turners will be demonstrating on a daily basis throughout the event.



Photo by Stuart King

On top of this there is the **Competitions Room** where there will be many works of excellence to view, it is anticipated many of these works will be offered for sale.

Ticketing: Is now live, there are many options available with Early Bird discounts and Gift Aid sign up etc.

You will find all you need to know by visiting <https://wizardry-in-wood.eventbrite.co.uk>

This enables you book in advance and print your tickets, you will still be able to pay at the door, but no discounts will be available.

Make a note in your diary to visit on one of the days from

**Wednesday October 12th through to
Saturday October 15th.**

**Opening times: Wednesday – Friday 10am – 5pm
Saturday 10am – 4pm.**



Photo by Stuart King

If you are entering the Competitions
you need your work delivered
between 9.30am and 11.30am
on Tuesday October 11th 2016



This is an event that should be in your diary and that you plan to attend.

Worshipful Company of Turners Competitor Packing & Shipping Instructions

If you are shipping your work to a reception point or are requiring your work shipped back after the competition, you need to take on board the full list of instructions listed below.

If you are delivering and collecting personally or arranging for others to do so some of the instructions may seem a little unnecessary, however it is good practice.

- Double box all shipped work; a smaller box cushioned on all sides inside a larger box can protect your work from bumps and sharp objects.
- Wrap your work with protective, acid-free tissue paper. Insulate your work with padding such as bubble wrap, upholstery foam, or Styrofoam. Please DO NOT use loose material such as Styrofoam peanuts.
- Please adhere a photograph of the piece on both boxes and write your name on two sides of the boxes using permanent marker pen.
- Include entry forms and any title of the piece inside both boxes.
- Include return address labels and finance for return shipping.
- Cover any paper labels with clear tape.
- Identify your container as "FRAGILE"
- Identify where you would like the container opened by writing "OPEN THIS SIDE" or "OPEN HERE".

- Include detailed unpacking and packing instructions.
- If required include a photograph/s of how the piece is to be displayed.

This information will be of great help to those unpacking and repacking your work, please help us by following this guidance.

The best arrangement is for you to bring your own work and remove it at the end of the event.

Venue: Carpenters Hall, Throgmorton Avenue, London EC2N 2JJ

Date & Time Reminders: Delivery & Registration:
Tuesday October 11th 9.30 am to 11.30 am.

Collection: Saturday October 15th between 4 pm to 5 pm

Mailed or otherwise delivered: To the Clerk at Skinners Hall, Dowgate Hill, London EC4R 2SP
No later than Friday October 7th 2016.

Mailed or otherwise delivered: To Reception centres (this element is still in the planning stage, it is hoped to have more centres this year with a wider geographic catchment) In 2014 there were ten reception centres. Addresses and details will be announced in due course on www.turnersco.com website and on the AWGB website.

invite you to a day with

Andrew Hall

Andrew Hall is a well-known turner on the UK circuit, perhaps best known for his turned wooden hats. Come along and be entertained and inspired by Andrew.

This demonstration is open to all interested woodturners and woodworkers.

Date: **Saturday 15th October 2016**

Venue: **Croesyceiliog CEC, The Highway, Croesyceiliog, Cwmbran, Torfaen. NP44 2HF**

Time: **10.00 am till 4.00 pm approx.**

Cost: **£12.50**

Contact: **Peter Bradwick on 07768 921109 or 01633 873640 – peterbradwick@btinternet.com**

Refreshments are available throughout the day



Little Sister Big Performance

Little Sister is a mini hollowing tool based upon the highly successful Brother System 2 range. Designed with the small/mini lathe turner in mind.

Compact fixing screw
Hollow through 13mm
openings with ease!



Tapered Stem
for maximum rigidity

Proudly
Made in the UK

DVD
VIDEO
Free DVD
Included

Talk with your
stockist today

hamlet
CRAFT TOOLS

sales@hamletcrafttools.com

www.hamletcrafttools.com

+44(0)1142321338

3 configurations available



An interchangeable scraper (ref H5187B) also available

Allan Calder's Ltd Sandpaper Supplies

Unit 2B Churnet Works, James Brindley Road,
Leek, Staffordshire ST13 8YH



We are supplying top quality brands of sanding abrasives for all types of wood turners.

www.sandpapersupplies.co.uk

Email: sandpapersupplies@yahoo.co.uk
Tel: 01538 387738

ProEdge Sharpening refined

The Robert Sorby ProEdge offers effortlessly repeatable sharpening every time.

Features and benefits:

- Change belts in seconds
- Flat bevel rather than hollow grind
- Wide range of grits and abrasives
- Belt sharpening lowers risk of overheating
- Sharpen at exactly the same angle every time
- Nine factory indexed settings provide a guide for all types of tool
- Can be locked between indexes for custom settings

Wide range of accessories to suit all sharpening needs



Proudly Made in
Sheffield, England
Patent Number: 2400862

Robert Sorby
The Robert Sorby ProEdge: Sharpening made simple

www.robert-sorby.co.uk

Stiles & Bates

The Woodturning People

Shop

Mail Order Catalogue

Website

Upper Farm, Church Hill, Sutton, Dover, Kent. CT15 5DF

Tel: 01304 366 360

www.stilesandbates.co.uk
sales@stilesandbates.co.uk





Member Training Workshops

'Special Two Day Course' Stuart Mortimer

Hope Cottage, Grateley, Hampshire
SP11 8JT

Wed 6th & Thurs 7th July 2016

Intermediate / Advanced
Spiral Twists

Andrew Hall

5 Well Bank, Billy Row, Crook
County Durham DL15 9SP

Saturday 16th July 2016

Intermediate/Advanced
Small Hats

Mark Hancock

29 New Bridge Rd, Tiptree,
Essex CO5 0HS

Wednesday 10th August 2016

Intermediate
Log to Bowl; Green Woodturning

Mark Hancock

Unit 365, Springhill, Salters Lane, Lower
Moor, Pershore, Worcestershire WR10 2PE

Saturday 29th October 2016

Intermediate/Advanced
Techniques of Hollowing a Closed Form

Jay Heryet

Croesyceiliog Community Education
Centre, The Highway, Cwmbran,
Torfaen, NP44 2HF

Saturday 19th November 2016

Intermediate
Thread-Chasing

Visit the AWGB website: www.awgb.co.uk and download an application form and send to the coordinator shown on the form.

Or complete a 'Training Workshop Application' Web Form.

Only fully completed application forms will be considered.



Turn East 2016



The 13th East of England Woodturning Seminar

**Saturday 20th August 2016
At Fakenham High School, Fields Lane, Fakenham. Norfolk
9.20 till 16.45**

**Admission will be by ticket only at the price of £30.00
which includes a buffet lunch, teas & coffee.**

We have lined up a team of first class turners to demonstrate for us

Paul Hannaby, Margaret Garrod, Andrew Hall & Jason Smith

In addition we hope to have a range of trade stands together with an exhibition of members and delegates work.

As we will only have a limited number of spaces available, early application is recommended to what we believe will be a first class event.

Application form and further details are available from:-
.Bernard Rose, 63, Belmore Road, Thorpe St. Andrew, Norwich. NR7 0PR
Tel: 01603 436990 or email bandm.rose@tiscali.co.uk

**Turn East 2016 is a one day Bi-Annual Regional Seminar
Organized by the**

Norfolk Woodturners Society



Woodturning, the unseen health risk of wet turning.

Ian Salisbury

Dust control when turning dry wood is very important and has been well documented. But for wet woodturning there is a unseen danger of gas being generated from the sap in the wood, this danger is not widely reported.

Wet summer wood has a large content of liquid material, can be up to 40% of the weight of the wood, this is removed by drying, but in wet wood, it still exists, this liquid can contain very dangerous chemicals.

To understand this we have to consider how trees have evolved. Trees cannot move, so over time they have evolved the means to produce a vast and complicated array of chemical compounds in order to deter herbivores. One example of this, when the Winter Moth caterpillar starts eating the Oak tree leaves, the tree is able to detect the chemical footprint of the moth, the Oak is then able to send chemicals, only to the area effected by the moth, adding poisonous chemicals to the leaves, in the area affected, thereby getting rid of the moth caterpillar. We tend to think of a tree as simple structures, but they are very sophisticated structures and very complex chemical factories.

They can also have fungi and toxic compounds, these can be taken up through contaminated groundwater.

So the liquids in the wood can contain toxic chemicals, which can present serious health risk, if these chemicals enter the human body. Symptoms of which may include intense sleepiness, vomiting, unsteadiness, dizziness, lack of concentration, diarrhoea, nervous symptoms, depression, in the worst case kidney damage and death. Also highly irritating oils, contained within the liquid can cause skin allergies.

A good source of information on chemicals contained in different types of trees and the health effects, can be found on the internet, search for - (tree sap, toxic chemicals), look at the entries

1. List of poisonous plants wikipedia.
2. Contact – Poisonous Plants of the World
3. Volatile trees/ Earthdata.

I have encountered some of these symptoms, (dizziness and headaches), when wet turning wood such as Laburnum, Oak, Yew. It is well known that these trees contain high levels of toxins which can cause health problems.

But I did not understand the problem at the time, and did not take the right precautions, and suffered the consequences.

We can get contaminated by these chemicals, in two ways.

1. If we get these on our skin. When turning the wood, it is rotating at high speed, centrifugal force will throw off these liquids, on to our hands, face and clothes. So it is wise to cover these parts of the body to limit the risk of contamination. As some of the oils can cause allergies if in contact with the skin.

2. When we start woodturning we use a cutting gouge, the friction of cutting will cause the metal tool to become very

hot, and vaporize the liquids contained in the wood to gas, which can be very toxic, and if inhaled these can cause problems outlined previously.

To reduce this risk of chemical gas build up in the workshop, airflow design is critical.

My workshop was designed to cut dry wood, see photo below.



The arrow indicates the airflow from the lathe to my old cooker hood, mounted above the lathe.

I use an air fed respirator helmet, which draws air through the filters attached to the helmet. (See photo).



This resulted in my becoming very ill, when working with wet wood. The problem was eventually traced to the workshop air flow design.

The initial concept of the cooker hood was to catch the fine dust, fungi and spores and drawing them up into the hood and extract it to the outside air, to remove them from the workshop, which was fine for dry wood.

But when I started to cut wet wood, the dust and the unseen gas was drawn up to the cooker hood, but on the way up, my air fed respirator helmet pulled in this air/gas/wood dust mixture into the helmet, the dust was trapped in the filter, but the gas and air was circulated inside the mask. Due to the enclosed space inside the helmet, I was forced to inhale the gas under pressure, making me ill.

Once discovering the cause of my illness the remedy was simple, just change the direction of the air flow in the cooker

hood to the down direction, in this way my helmet was drawing in fresh air from the cooker hood air flow, and the dust and gas being blown away from the lathe into the workshop.

An extraction fan was placed at the opposite end wall of the workshop, so the air flow was across the workshop, the contaminated air with gas and wood dust, being extracted to the outside.

In this way the workshop was continually being supplied with fresh air, keeping the gas level low.



As I have said above, wet turning has the risk of producing gas which can be very poisonous, and can be an unseen health risk, as it can be clear non-smelling, every care should be made to reduce the risk of inhaling the gas.

Introducing fresh air into the workshop and removing gas is a must, the drawing below is a typical design for introducing fresh air, at the correct point above the operators head.

The introduction of fresh air in the workshop is also important, when using such chemicals, as Super glue and

sanding sealer, or any other materials with solvents, because the solvent can build up in the workshop to a dangerous level.

In summary

I do not want to cause alarm, and this should not be taken out of context. A small amount of wet turning is probably no more dangerous, then using a pressurised disinfectant spray in the house with no ventilation.

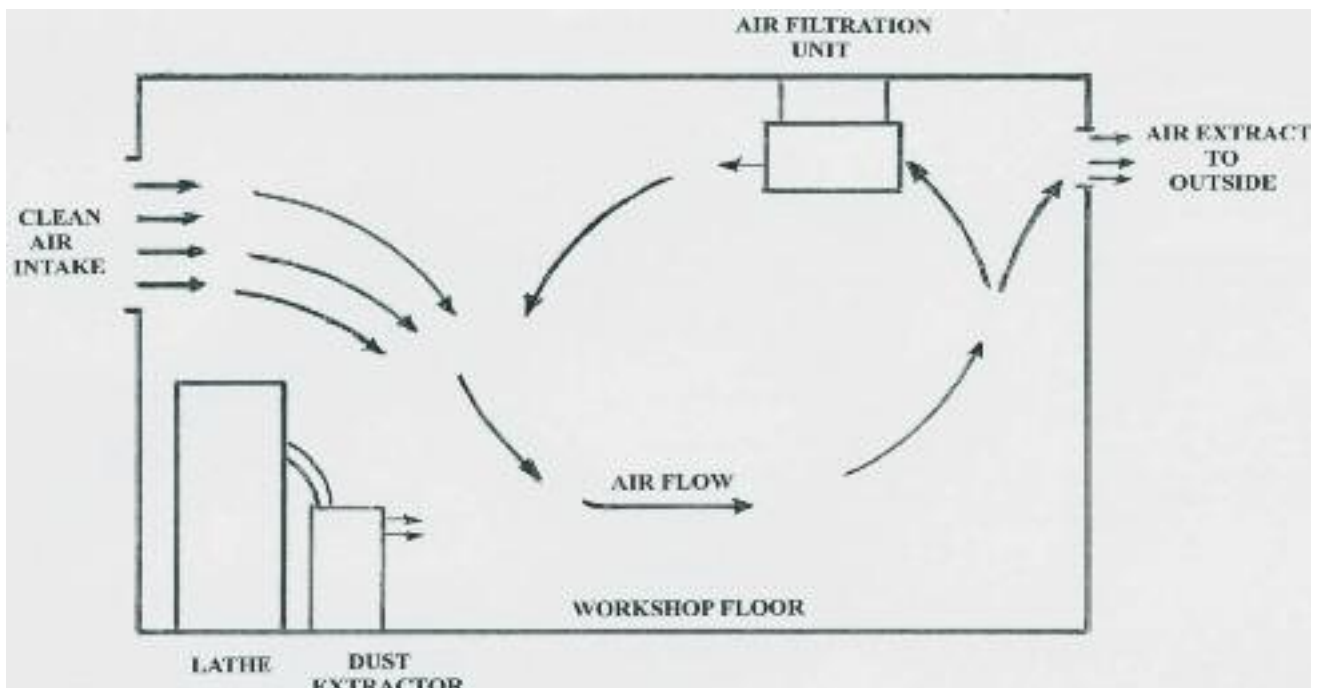
If you are doing a lot of wet turning, for example hollowing a form, similar to the Greek vase shown. Where you have your face close to the entrance of the vase, then you may be exposed to a high concentration of gas, which is coming out of the inside of the vase.

I experienced not feeling very well making this vase because I was using a respirator helmet, with a motorised fan forcing filtered air and gas into the enclosed space round my face, forcing me to inhale the gas, under these conditions you need to have a good supply of fresh air, in the area of your head.



In the winter when it is cold outside we turn on the heater, and close all window and doors, just let the air circulate in the workshop. We are lucky if the wood has been cut down in the winter, as at that time the liquid in the wood is at the lowest level, this reduces the risk of gas being drawn off the wood, but if it is summer wood, when the liquids and chemicals are at the highest level, this can produce a lot of gas, and care must be taken to ensure that fresh air is introduced to the workshop, to prevent a build up of gas.

It is my belief that when I have made mistakes, for no apparent reason. It may well be that my concentration has been effected, by a mild exposure to a chemical gas, not just a careless moment.



Congratulations to Andy



Andy Rounthwaite was the demonstrator at the meeting of High Peak Woodturning Club on 6th May. This provided the perfect opportunity for club member, Dave Atkinson, our Chairman, to present Andy with his AWGB Tutor Award. The AWGB Tutor Award is given to AWGB members who have been assessed and provided sufficient evidence to the assessors that they are capable of instructing people on basic woodturning techniques. To be considered for assessment candidates are required to follow the Let's Teach Turning course (available as a download from the AWGB website, www.awgb.co.uk) and then apply for assessment. The course is self-study and runs on a PC.

Professional Turners who already provide instruction, and have a proven track record, are not required to be formally assessed.

Dave said "I am delighted to make this award to Andy and wish him well for the future".

NEW PRIME-TIME TV DOCUMENTARY IS LOOKING FOR PEOPLE ABOUT TO CHANGE THEIR LIVES

Are you about to relocate for a major lifestyle and career change?

Pi Productions is looking for couples and families planning to quit the rat race for a better life.

Whether it's moving to the countryside to open your own studio, setting up an artisan shop by the sea, or running a pub or café in a bustling new town, we want to hear your story.

We are casting for a brand new documentary series and are looking for families who are embarking on a life changing relocation this spring or summer.

If this sounds like you please get in touch! Call the casting team on 0203 761 4522 or email casting@piproductions.tv and tell us a bit about what your plans are, where you're relocating to and when.

Applicants must be UK residents and be relocating within the UK



Jumping jack solution

If you look at the three photographs, R21, R22 & R23, you will see that if you blow down hard onto the bullet shaped plug the air pressure will lift and eject it from the cup. A real Jumping Jack.



R21. Hold the cup and blow down hard



R22. ...and up it comes....





W.L. West & Sons Ltd
Selham, Petworth, GU28 0PJ
t: 01798 861611 f: 01798 861633

- Hardwoods
- Wood finishes
- Australian Burrs
- Exotic Timbers
- Woodturning Blanks
- Woodturning Courses (see website for dates)
- Woodworking Machinery
- Woodworking Tools
- Fencing, Gate & Decking Products
- Bespoke Garden Furniture

RECORD POWER
RECORD POWER PT - SELHAM, HAMPSHIRE

Timber, Tools & Machinery for D.I.Y • Carving Woodturning • Furniture Projects
shop@wlwest.co.uk

Off A272 Midhurst to Petworth road opp The Halfway Bridge Inn

Open: Mon-Fri 8-5 & Sat 9.00-1.00pm
www.wlwest.co.uk



Member Training Programme

Hands-on Master Class Weekend

Beginning an Artistic Journey in Woodturning

Nick Agar and Jay Heryet

When: Saturday 10th December and Sunday 11th December 2016

Where: Max Carey Woodturning Trust, The Mill, Portishead, Bristol

The goal of this course is for students to take their woodturning imaginations to new heights while learning about surface enhancement on turnings.

You will have an introduction to aspects of design, form and proportion for enhanced wood-turned projects and create a canvas for texture, colour and surface designs that includes the simplicity and beauty of wood itself.

The course will stimulate the turner's instincts to develop their creative potential.

This course is open to students who have an understanding of tool use and some hours at the lathe.

The course is **free** to AWGB members. However, a donation to the AWGB would be appreciated. For members who wish to stay overnight there is a 'Travelodge' close by.

The closing date for applications is **1st September 2016**. The course will be limited to 12 members. If oversubscribed there will be a ballot for places.

Application forms are available from <http://www.awgb.co.uk/documents/> - Training Workshop Application



Development and Training

Youth Training Workshops

Stuart Mortimer

Hope Cottage, Grateley,
Hampshire SP11 8JT

27th August 2016

Workshop Health & Safety
Various Projects and techniques

Andrew Hall

5 Well Bank, Billy Row, Crook,
County Durham DL15 9SP

1st October 2016

Workshop Health & Safety
Various Projects and techniques

Applications for Youth Training Workshops to

Ron Caddy e-mail: acorncrafts@tiscali.co.uk Tel no: 07903 313065

or visit the AWGB website: www.awgb.co.uk

Making Windsor Chairs

by Amateur Woodturner John Hooper
(Member of Derwent Woodturning Club)

Introduction

I took up Woodwork as a hobby when I was still at School. The first piece of furniture I made at Evening Class was a Record Cabinet made from Mahogany, Sycamore and American Walnut (1960). It was 30 years ago that I became very interested in Woodturning when attending a Non-Vocational Wood-Machining class at my local College in Burton-upon-Trent.

After making Window Frames and Garden Furniture at this class I decided that I would like to make pieces of furniture which included turned components. The first piece I turned on the college lathe was a spindle for a tall three legged plant stand.

Going on a Woodturning course at Reg Slack's workshop in Brailsford, gave me a greater understanding of the different turning tools and the correct way in using them. (1993).

I bought myself a Record Power Coronet No.2 lathe from Tabwell Tools in Bakewell and a set of turning tools from Ashley Iles as recommended by Reg (1993). Note: I chose the Coronet No.2 lathe because it is an ideal size for turning chair and table spindles, having a distance of 30" between centres.



Fig.1. Record Coronet No.2 Lathe with part-turned Cone (2016)
Note: I changed the No-Volt-Release (NVR) Switch for a Direct-on-Line (DOL) Starter to provide overload protection for the Lathes Motor.



Fig.2. Ashley Iles Turning Tool Set in modified Carrying Case.
(It was previously a case for 18" diameter Circular Saw Blades)

Chair Making Methods

I purchased a copy of Jack Hill's book on Country Chair Making (ISBN 0-7153-8767-7) to familiarise myself with the methods used in Windsor chair making. This is an excellent guide for anyone wishing to have a go at traditional chair making. I also visited professional chair maker Melvyn Tolley at his workshop in Bradley near Ashbourne. Melvyn's Windsor chairs were all hand crafted using traditional methods, for example, he hollowed out the seat saddles using an Adze and a Travisher. I used different methods utilising the wood machine tools at college.

Refer to the web-site: travisher.com to see the Travisher designed by James Mursell and Ben Orford's demonstration of using this tool. This uniquely designed shaving tool makes short-work of hollowing.

To be able to make the chairs, I had to manufacture all the necessary jigs, formers, templates and steam-bending devices. Some examples are given below:

Sloping platform for use when drilling the compound-angled seat sockets

- "V" cradle for use when drilling the stretcher sockets in the legs
- Bending table and former to bend the bows around
- Stainless steel bending strap
- Steamer for heating the timber sections for the bows
- Templates for shaping the seats, arms, rockers and wheel-back splats

Note: Mild Steel can be used for making a Bending Strap, but Stainless is less likely to stain the wood, especially if it is light in colour, like Ash.



Fig.3. Template used when routing out the Seat Saddle



Fig.4. Template used when routing the Seat profile and drilling the Seat Sockets



Fig.5. "V" Cradle on Sloping Board used when drilling Stretcher Sockets in the Legs

Materials

The hardwood boards that I needed (Ash, Elm and Yew) were difficult to source locally and also very expensive. A waney-edged Elm board (Kiln dried) 8ft x 2ft x 2inch, to make four chair seats from, would have cost me £150 from a local Timber Merchant (1994). After searching on the internet, I managed to find similar size Elm boards (air dried) for about a quarter of the cost. The downside was that I had a 1.5 hour journey each way to Harry Adcock's Saw Mill in Corby Glen.

Techniques

I followed most of Jack Hill's chair making techniques and implemented a few of mine own:

- Instead of making a traditional style steam box I made a Steam Tube out of 100mm diameter plastic drain pipe. The 2 metre length of pipe was mounted vertically on a home-made wooden flange (made from marine plywood) with a grated steel insert, to sit on the top of a 3kW baby Belling boiler. At the top of the pipe I fitted a vented cap and the pipe was secured near the top with a wire strap to a metal conduit on the workshop wall. A bit Heath-Robinson in design, but it worked.
- To initially hollow out the shape of the seat saddles I made a plywood template to enable me to be able to use an overhead plunge Router with straight and radius bearing guided cutters. The seat saddles were then finally shaped with a spoke-shave and a goose-neck cabinet scraper prior to sanding. Quite a tedious job due to the "wild" grain pattern of the Elm that I used.
- I also used a spoke-shave to form the round tenons at each end of the Ash bows to fit into the round mortices of the seats. It would have been a lot easier and quicker to use a Fred Lambert Rounder (Rounding Plane), like Jack Hill did.

Important Note: I soon found out that one of the most difficult operations of Windsor chair-making is forming the bent sections of timber. As soon as the timber is removed from the steamer, the bending operation must be done within a minute or two whilst the wood-fibres are soft and pliable, as the timber will quickly cool, soon become brittle and consequently split. My first two bows split because I took too long carrying out the bending operation. Another bow failed due to there being knots in the wood.

Turned Components

Out of the 85 turned components for the six chairs I made (which included the legs, stretchers, back sticks, side sticks, back spindles and arm stumps) I only had two failures, both due to those dreaded dig-ins.

When turning the back sticks, for the Rocking Chair, there was quite an amount of "whipping" due to them being long and slender components (28 inches long and ½ inch in diameter at one end to fit into the back-comb sockets). To overcome this problem I used my left-hand as a steady and wore a gardening glove to prevent stabbing my fingers with sharp turning tools.

Finishes

As recommended, to protect and enhance the natural colour and grain of the wood I used a Spirit Sanding Sealer and a Finishing Wax.

The Rocker and the Smokers Bow still look as good as new, however, after 20 years of service the Bow-Backs have lost their original appearance due to a build-up of patina on the chair components made from Ash. (Refer to Figs. 6 & 7 to see the difference) It must be because of the light colour and open-grain nature of this type of wood. In hindsight, maybe I should have used different types of finishes!



Fig.6. Bow-back made from Ash & Elm (1996)
 Note: The "wild" grain pattern of the Elm Seat.



Fig.7. Bow-back looking tarnished (2016)



Fig.8. Rocker made from Yew & Elm (1998)



Fig.9. Smokers Bow made from Yew & Elm (1999)



Fig.10. Four Bow-backs (1996) and Round Pedestal Table made from Beech (1993)

Note from the editor

I would love to receive all your ramblings and tales, stories and tips, jokes and yarns and anything else you would like to write for me (as long as its suitable for publication of course). Don't forget to include photographs, illustrations and any supporting materials if applicable.

Send to: editor@awgb.co.uk or my address is on page 3

Ashley Iles
 woodcarving & turning tools
 made in the old tradition

Precision Made Woodturning Tools



Ashley Iles, Solly Street c.1958

Send £1.00* postage for our 49 page
 Catalogue and 2014 Price List

*£3.00 Mainland Europe and Eire, £4.50 USA and Rest of the World

Ashley Iles (Edge Tools) Ltd, East Kirkby, Spilsby, Lincolnshire PE23 4DD.
 Tel: 01790 763372 Fax: 01790 763610
 Email: sales@ashleyiles.co.uk
www.ashleyiles.co.uk

Youth Training Weekend at Grateley

Stuart Mortimer

Before commencing this report I have to report this year was the 10th Anniversary of the Young Turners Training and Development Programme. On behalf of all our students, their parents and tutors over the years I personally thank The Worshipful Company of Turners, the Association of Woodturners of Great Britain (A.W.G.B.) and all our sponsors for their continuing support. With their support I feel we have established the basis of a permanent training programme.

The event at Grateley this year (11th year) was another great success enjoyed by all the participants and visitors alike. The format for the weekend has remained the same as it has been for years.

The students were received and introduced to the tutors on Friday evening, they said their goodbyes to their parents after which they had their evening snack of hot dogs, biscuits and soft drinks before retiring to the overnight marquee under the supervision of 2nd. Lieutenant Charles Webber.

A full breakfast was served each morning before work commenced. After work on Saturday evening tutor John Boyne-Aitken gave a demonstration for the students' and our evening guests before the traditional evening barbeque for 35 people.

On Sunday after breakfast the student's rotations continued with two students per tutor until 12 noon. After lunch the afternoon sessions are allocated as free time for the students to finish or continue with a subject of their choice.

At 4pm The Master of the Worshipful Company of Turners Nicholas Edwards presented certificates to each student in turn, speeches with kind salutations followed to finish the event. An excellent time was had by all.



Peter Bradwick the A.W.G.B. Training and Development Officer was one of tutors this year, seen here with one of the students, he is a teacher by occupation and an excellent woodturning tutor.

To clarify one or two points regarding safety, the workshop is fitted with a very effective extraction unit as well as an 18" through wall mounted fan at the rear of the workshop, with doors open this allows for a continuous through flow of air to ensure clean air at all times. All operational electrical machines are centrally controlled by myself through an instant cut out remote switch.



Gary Rance was an apprentice turner and is probably our best and most successful production turner here in the UK, having fast and confident turning techniques that are rarely seen within the craft. He is known Internationally and is seen here teaching two of our students on Jet machines.

The workshop is also equipped with regularly serviced fire extinguishers, clearly indicating how they should be used and their location is clearly indicated with a sign by the main entrance to the workshop.

First Aid and Eye Bath kits are wall mounted and clearly visible with a wall mounted sign indicating their position.

Full face masks, goggles and breathing masks are provided for use. Tutors give instructions when safety equipment should be worn, safety equipment is used at all times where required, safety must be a first priority.

The photograph below shows John Boyne-Aitken past Southern Area Regional Representative for the A.W.G.B. (Association of Woodturners of Great Britain). A professional turner by trade, and an excellent all round turner and tutor.



John Boyne-Aitken with a student.

All students are given a choice of design for their projects with each individual tutor, although each tutor deals with one or two individual subjects, this means that students get a wider range of experience where tooling techniques vary considerably between tutors, some may say this process may be too much for some beginners, this is not the case. One has to realise that we are dealing with young turners who are not beginners and are quite capable of standing at a lathe and carrying out simple tooling exercises on their own, I would go as far to say some of our students are spotted as potentially master turners of the future, several have already proved they are capable of developing to become masters, given time.

Whilst I am fully aware, even in the highest levels of woodturning there are very few turners Nationally or even Worldwide who are completely satisfied with their tooling skills. This I feel also reflects and relates to their sharpening ability, it is very important that sharpening skills are developed in parallel with their tooling skills. Careful selection of materials, safely mounted in the chuck between centres, correct speed and proper protection when roughing out, always turn at the correct speed according to the capability of the machine and tooling ability.



Students at work



Myself, Stuart Mortimer with my grand daughter Mia Mortimer aged 13 years.



Students at work



Ron Caddy is one of the AWGB Co-ordinators for the Youth Training programme, the Chairman of Test Valley Woodturners Club and Secretary of the Stuart Mortimer Woodturners Group. Ron is also one of the best pen makers I know of and has a very patient ability to pass on his skills.



Students at work

All young turners are very enthusiastic and most of them are continuing to turn in one way or another, several as part of their employment working with wood, some working as hobby turners with their father or grandfathers'. Sadly a few have dropped by the wayside but mainly because they have no access to a lathe.

Many young turners have entered or finished the early training stages of the programme, they understand the lathe and know the names of the main operating parts and are now entering the development stage of the programme. The development area is where they hone their skills to a point where tooling becomes second nature, students should then be able to concentrate more on shape and form, tooling will become natural and instinctive when shaping.



Students at work



A student's work



The Master Nicholas Edwards with his wife Ann and Past Master Peter Gibson with his wife Di, and my wife Linda with tutors and students.

THE WORKSHOP

My workshop is bungalow sized with a mezzanine floor, and it is equipped with an Oneida Gorilla dust extractor, and an 18" high powered extractor fan at the opposite end of the workshop from the main doors allowing for a clean air flow. It is well equipped with 10 lathes of varying sizes, one is a large Oneway lathe with most extensions and accessories, six are Jets, of which four were donated to the Young Turners Training and Development Programme by Jonathan and Shirley Cuff, owners of the Daniel wood art collection. I have several other smaller lathes, a wide range of supporting machinery including an extensive range of electrical hand tools.



Students with a display of their work.



Where Quality Meets Value
Spare caps and micro-applicator tips with every bottle



Find Starbond Superior CA Adhesives only at:

The ToolPost
Unit 7 Hawksworth,
Southmead Industrial Park
Didcot, Oxfordshire, OX11 7HR
Tel: 01235 511101
<http://tinyurl.com/StarbondUK>



first for finishes



Used by woodturners of all abilities throughout the UK and the world, the Chestnut Products range of top quality finishes gives outstanding results every time; whatever you are making and whatever your preferred finishing system there is bound to be something in our range to meet your needs.

See your local stockist for more information or for a catalogue/price list contact us at:

Chestnut Products
PO Box 536,
Ipswich IP4 5WN
Tel: 01473 425 878 Fax: 01473 431 096
www.chestnutproducts.co.uk
mailroom@chestnutproducts.co.uk
Stockist enquiries welcome

- Cellulose Sanding Sealer
- Finishing Oil
- Lemon Oil
- Acrylic Gloss Lacquer
- Acrylic Sanding Sealer
- Safety Cloth
- Spirit Stain
- Acrylic Lacquer
- Burnishing Cream
- Cellulose Thinners
- End Seal
- Friction Polish
- French Polish
- Melamine Lacquer
- Wood Wax 22
- Steel Wool
- Polishing Brushes
- Shellac Sanding Sealer



Certificate in Woodturning

Introduction

The Certificate in Woodturning is designed to provide a training programme that covers all the basic skills to be competent at woodturning.

The Certificate is aimed at candidates with little experience, or the more experienced with no formal training of woodturning. Therefore the Certificate is primarily a training programme of the basic skills with assessment criteria.

The Qualification comprises:

- Training units
- Multiple choice question assessment at the end of each unit
- Practical assessment

Training Units

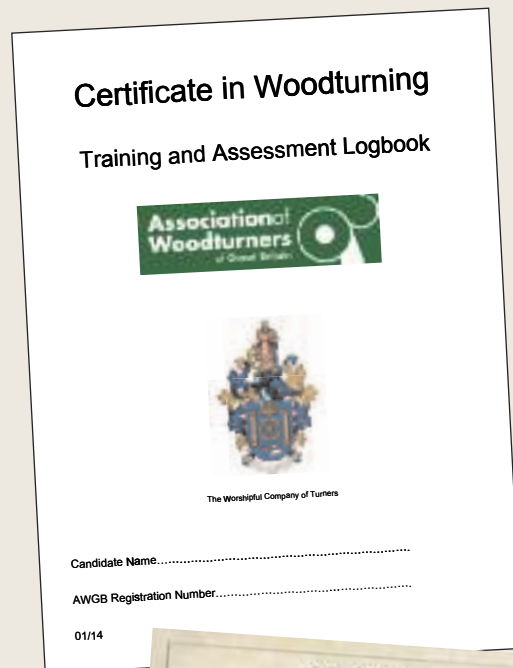
- Unit C 101 Workshop Safe Working Practices
- Unit C 102 Tools and Equipment - Maintenance
- Unit C 103 Wood Technology
- Unit C 104 Spindle Work
- Unit C 105 Faceplate Work
- Unit C 106 Finishing

The **'Training and Assessment Logbook'** is issued to the candidate on commencement of the award to record the training and assessment. When complete the training and assessment is verified by the AWGB.

On successful completion the Association of Woodturners of Great Britain and the Worshipful Company of Woodturners will award the **'Certificate in Woodturning'**

Six day Certificate in Woodturning Course...

Open to AWGB members only.



Venue	5 Well Bank, Billy Row, Crook, COUNTY DURHAM, DL15 9SP		
Tutor	Andrew Hall		
Dates	February 18th and 19th 2017	March 18th and 19th 2017	May 6th and 7th 2017

The course is part-funded by the AWGB and WCT with the AWGB providing one third, the WCT one third and the candidate provides the remaining third. We expect four candidates per course each paying £150.

A second course is to be announced in the next edition of *Revolutions*, also go to the AWGB web-site for further details and application forms...

or contact **Peter Bradwick**
e-mail development@awgb.co.uk Tel 01633 873640

Double Ended Bowl Gouges

Perfect with our Multi Handles

For the woodturner who wants more for less - and who doesn't - these superb bowl gouges from premium toolmaker Henry Taylor are the perfect answer. Offering two alternative grinding styles - one on each end. These Sheffield-made gouges offer maximum versatility when paired with a system handle such as our new Multi-Handles. Available in 1/4", 3/8" and 1/2" flutes from only £41.94 - talk with your favourite stockist.

Proudly
Made in the UK



Fingernail
Profile



Standard
Profile

For the advanced turner we also offer these tools featuring the special grinds developed by renowned Irish woodturner Glenn Lucas, and which also feature in our signature bowl gouge range.



hamlet
CRAFT TOOLS

Hamlet Craft Tools
www.hamletcrafttools.com
sales@hamletcrafttools.com
+44(0)114 232 1338

Available through
Henry Taylor
and
Hamlet Craft Tools
stockists worldwide



Henry Taylor (Tools) Limited
www.henrytaylortools.co.uk
sales@henrytaylortools.co.uk
+44(0)114 234 0282

At last, an affordable Multi-Handle

Now available from your **Henry Taylor** or **Hamlet** stockist

4 sizes to cater for your needs - 9", 13", 17" & 24"

Henry Taylor (Tools) Limited
www.henrytaylortools.co.uk
sales@henrytaylortools.co.uk
+44(0)114 234 0282



hamlet
CRAFT TOOLS

Hamlet Craft Tools
www.hamletcrafttools.com
sales@hamletcrafttools.com
+44(0)114 232 1338

Radial clamping of tool
Simple but effective

Textured handle grip
Safe and secure



Proudly
made in UK

Ideal to use with our double ended gouges