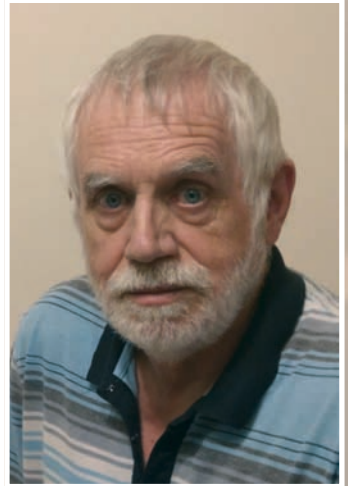


Revolutions

THE NEWSLETTER OF THE ASSOCIATION OF WOODTURNERS OF GREAT BRITAIN

Issue No 141

June 2022



7-9 OCTOBER
2022
AWGGB
INTERNATIONAL
WOODTURNING
SEMINAR
Your turn to be inspired



www.awggb.co.uk

A Company Limited by Guarantee - Company Number 8135399
Registered Charity Number 1150255

Corporate Members of the AWGB

Further information, including discounts, on the Corporate Members is available on the AWGB website.

Allan Calder's Ltd

Suppliers of high quality abrasives of many types at competitive prices.
01538 387738 www.sandpapersupplies.co.uk

Ashley Iles (Edge Tools) Ltd

Woodturning and Carving tools traditionally made to a high specification
01790 763372 www.ashleyiles.co.uk

Axminster Power Tool Centre

Suppliers of quality woodturning products: courses from beginner level to advanced.
0800 371822 www.axminster.co.uk

Beaufort Ink

Manufacturers of the Versachuck system and Beaufort brand pen kits. UK agents for Beall Buffing system & Starbond glues. Suppliers of various supporting tools and accessories.
01363 84686 www.beaufortink.co.uk

Biven Machinery Sales

Suppliers of quality woodworking, carving, woodturning, pyrography machinery, tooling accessories and consumables. Discounts available for AWGB members.
01253 425793 www.bivenmachinerysales.co.uk

Brandon Bespoke

A leading manufacturer of quality Oil and Wax wood treatments – particularly food safe, all developed and perfected over generations.
01256 220471 www.brandonbespoke.co.uk

Charnwood

Woodworking machinery, lathes, chucks and accessories. Next day delivery throughout UK Mainland.
01530 516926 www.charnwood.net

Chestnut Products (Finishes) Ltd

Quality wood finishes with emphasis on products for woodturners. See Chestnut Finishing School videos on You Tube.
01473 890118 www.chestnutproducts.co.uk

Classic Hand Tools Ltd

Quality Hand Tool, Lathes, Turning and Carving tools. 01473 784983
www.classichandtools.com

Crown Hand Tools Ltd

Crown offer the largest range of woodturning tools worldwide, combining the perfect mix of tradition and innovation finished to the finest exacting standards. 01142 612300
www.crownhandtools.ltd.uk

English Woods

Making it easy for woodturners to access high quality blanks in a wide range of species. FREE delivery with all UK mainland online store orders. 01823 681002
www.englishwoods.co.uk

G & S Specialist Timber

Suppliers of timber, tools, lathes and accessories. 01768 891440
www.toolsandtimber.co.uk

GPS Agencies Ltd

Suppliers of alternate Ivory, Horn, Black Ebony and Acrylic. Also Pen blanks and larger turning stock. 01730 233366
www.gpsagencies.co.uk

Henry Taylor (Tools) Ltd

Manufacturer of woodturning, woodcarving and woodworking tools. 0114 234 0282
www.henrytaylortools.co.uk

Hope Woodturning

Designer and manufacturer of a range of quantity woodturning tools, Jigs and sanding systems. 01206 230694
www.hopewoodturning.co.uk

Lovells Workwear Ltd

Suppliers of protective smocks and aprons which can be personalised. Safety, Comfort, Style. 02920 598327
www.lovellworkwear.com

Max Carey Woodturning Trust

A registered charity which aims to educate the public in woodturning. Tuition is provided through a comprehensive range of courses. 07976 402960
www.maxcareywoodturningtrust.org.uk

Mirka (UK) Ltd

Finishing products and tools including abrasive discs, strips and rolls, power tools and accessories 01908 866100
www.mirka.co.uk

Oaklea Woodcraft

Stocking a wide range of finishes, project kits, tools and blanks for the woodturner and wood carver. 01952 884064
www.oakleawoodcraft.co.uk

Olivewoodturning

Specialist supplier of Italian olive wood from a sustainable source. Discount available to AWGB members. 07714 204060
www.olivewoodturning.co.uk

Paul Howard Woodturning

Woodturning Jigs, Fluting jigs, Sphere jig, Copy fingers, Woodturning accessories. 01621 815654
www.paulhowardwoodturner.co.uk

Robert Sorby Ltd

Manufacturer of woodturning tools, lathes, and accessories, chucks, sharpening systems and accessories, woodcarving and woodturning tools. 0114 225 0700
www.robert-sorby.co.uk

Snainton Woodworking Supplies

Everything for the Woodturner.
01723 859545
www.snaintonwoodworking.com

Stiles & Bates

Comprehensive Woodturning Supplies since 1996. 01304 366360
www.stilesandbates.co.uk

Timbersource Ltd

A leading online timber merchant. High quality hardwoods and softwoods for the trade and the public. 01373 489610,
www.timbersource.co.uk

Turners Retreat

Complete range of woodturning tools and courses. 01302 744344
www.turners-retreat.co.uk

W.L.West & Sons Ltd.

Timber, Machinery, Turning & Carving tools, accessories and books.
01798 861611 www.wlwest.co.uk

Why-Aye Wood

We offer a range of finishes, tools, project and pen kits and wood turning blanks. Discounts available to AWGB members.
07730 791935 www.whyaewood.co.uk

Woodart Products

Magnetic & non-magnetic LED lights, Pyrography units & accessories. Micro drill/detailer equipment, Carbide piercing cutters & burrs - and much more.
07770 226640 www.woodart-products.co.uk

Woodturning Magazine

Best selling magazine for Woodturners. Suppliers of books, DVDs and magazines.
01273 402871 www.thegmcgroup.com

WP Hardwood Ltd

Native and tropical hardwood, bespoke service, turning blanks, supplies and burrs. AWGB Discounts available. 07939 982144

Yandle & Sons Ltd

Everything for the Woodturner.
01935 822207 www.yandles.co.uk

Front Cover

2022 Seminar demonstrators
- see page 8

Revolutions

Copy deadline for the next
edition of Revolutions

1st August 2022

The AWGB is a Company Limited by Guarantee and a Registered Charity. It is administered by a group of elected Trustees who are also Directors of the Company. The Trustees meet at least twice each year and at the AGM. When they meet together they are known collectively as the "The Executive". Additionally, there are a number of people who assist the Trustees in their duties. These people are not elected and are known as "Volunteers".

TRUSTEES OF THE EXECUTIVE

Executive President

Joey Richardson

Chairman

Russell Gibbs
121 St Georges Ave, Daisy Hill
Bolton BL5 2EZ
07802 916 967
chairman@awgb.co.uk

Vice Chairman

Brian Mouat
17 Lon Dderwen, Abergele
Conwy LL22 7DW
01745 833970
vicechair@awgb.co.uk

Treasurer

Mike Mansfield
27 Grenville Meadows, Lostwithiel,
Cornwall PL22 0JS
01208 872012
07799 065397
treasurer@awgb.co.uk

Secretary

Bryan Milham
13 Manor Gardens
Locking, Weston-Super-Mare
BS24 8DQ
07876 321 293
secretary@awgb.co.uk

Assistant Treasurer

Jeff Belcher
Oak House, Hanley Castle,
Worcestershire WR8 0BJ
07798 746296
asst-treasurer@awgb.co.uk

Membership Secretary & Data Manager

John Peachey
37a Oxstalls Lane, Longlevens
Gloucester GL2 9HP
01452 525976
membership@awgb.co.uk or
datamanager@awgb.co.uk

Trade & Business Officer

John Brooks
Lower Haygrove, Millpool,
Bodmin, PL30 4HY
07814 826929
trade@awgb.co.uk

2022 Seminar Bookings Co-ordinator

Jeff Belcher
Oak House, Hanley Castle,
Worcestershire WR8 0BJ
07798 746296
seminar@awgb.co.uk

REGIONAL REPS

Scotland

Darren Crisp
40 Andrew Baxter Avenue
Ashgill, Larkhall, ML9 3RG
07507 178986
scotrep@awgb.co.uk

North

Brian Mouat
17 Lon Dderwen, Abergele
Conwy LL22 7DW
01745 833970
northrep@awgb.co.uk

Midlands

Allen Wells
07791 593 914
midlandrep@awgb.co.uk

South West

Bryan Milham
13 Manor Gardens, Locking,
Weston Super Mare, BS24 8DQ
07876 321293
swrep@awgb.co.uk

South East

Vacant
serep@awgb.co.uk

VOLUNTEERS

Development Officer

Steve Gordon
16 School Avenue, Salford Priors
Evesham WR11 8XB
07939 371 420
development@awgb.co.uk

Youth Training

Ron Caddy
The Studio, 23 Wisley Road
Andover SP10 3UQ
07903 313065
youthtraining@awgb.co.uk

Webmaster

Colin Spencer
webmaster@awgb.co.uk

Newsletter Editor

Sheila Hughes
Alicia, Tytherleigh
Axminster EX13 7BQ
01460 221448
07768 373086
editor@awgb.co.uk

Health & Safety Officer

Martin Dickinson
3 Ryslaw Farm Cottages, Duns
TD11 3HX
01890 840635
hs@awgb.co.uk

Workshop & Training

Vacant
workshops@awgb.co.uk

DATA PROTECTION

Your personal details are held on computer for the use of the AWGB. We only use this information to run the organisation. If you would like to know what information we hold and how we use it, please contact the Secretary.

Chairman's Notes

Russell Gibbs

Well guys, a few weeks in as Chairman and I'm starting to breathe again. Its been good to meet and speak with most of the Executive and I'm looking forward to meeting some of you, the members, over the coming year.

I have previously spent 8 years on the Executive undertaking various roles including Northern Representative, Trade and Business Officer and Vice Chairman and since then had a 3 year sabbatical.

To begin with I am aiming to keep the good ship AWGB on its present course, and thank Paul Hannaby for the work he has undertaken and the support that he has given me to date and in advance for the help he will give me going forward.

We have spent the last couple of years dealing with the devastating effects of the Covid Pandemic and whilst it is still with us to a degree we are starting to see the World in general opening up. We are looking to take advantage of this with the planning of visits to shows where and when we can. The first major show that I know we will be attending is the Harrogate Show between the 11th and 13 November and hopefully I will spend a day there and therefore meet more of you.

There are a great many things for a new Chairman to tackle and with the support of the Executive I have spent some time gaining access to the various online areas and systems. I have attended, via Zoom, The Worshipful Company of Turners (WCT) Howe Committee, this is the group that liaises between the various bodies representing all the woodturning areas, these include The Pole Lathe Turners, The Ornamental Turners, The Register of Professional Turners and members of The Worshipful Company. It should be noted that although it's a little too late for this year as the date for The WCT Bursary Awards For 2022 has passed, it may be worth having a read about them if you are considering applying for next year.

The AWGB Grant Committee met again, via Zoom, and four applications have been considered.

The Executive have had their first working meeting, via Zoom, and a very full 3 hour session ensued, which allowed us to begin to gel as a team working for your benefit.

Many thanks to the Secretary Bryan Milham, who is also new to the post, for our regular Monday night calls where we attempt to sort any issues that have arisen over the week. We are working with the Executive to review various forms on the website to ensure that the procedures within them work effectively following the changes in personnel.

Possibly the biggest piece of work this year is the organising and running of the AWGB Seminar at Yarnfield, Staffordshire, between the 7th & 9th October. The Seminar subcommittee have much of the preparations in hand and further work is in progress, with a site visit scheduled for the 30th May when we will be able to iron out any issues well in advance of the weekend.



Remember this is your Seminar and needs your support to continue, please consider booking ASAP, you will not be disappointed and will be entertained by 10 national and International turners not to mention a great social occasion to meet old friends and make new ones.

I will finish by wishing you all the very best for the remainder of the year and with the cry of all AWGB Chairmen:-

We need more of you to help with the running of the Association, so if you can, please send your offer of help to the Secretary.

Bodmin & District Youth Training Day

Mike Mansfield

It seems like another life pre-pandemic when we took a group of young members of Activ8, a charity set up to encourage young disabled adults to have a go. As a result of that first training session the club, it was known as Treknaw woodturners at that time, the club realised that there was a need for more versatile lathes. They needed to be height adjustable to accommodate all sizes and wheelchair access.

As a result, the club started to build new stands that had powered rams for height adjustment. Progress was a bit slow until we approached the D'Oyly Carte Charitable Trust who made the funds available to complete the task, building two more stands, purchasing another two lathes and the relevant safety equipment.

These were completed in the middle of lockdown, so their inauguration had to wait until this month when we were to invite another 7 members of Activ8 and run a training day. We had the cheek to ask WC of Turners if they were prepared to sponsor this event, the same as they had previously. They readily agreed.

With the help of Colin Simpson and members of the club we were able to accommodate all seven attendees at once and proceeded with spindle work prior to a pasty lunch (this is Cornwall!) and a bowl in the afternoon.

The day was enjoyed by all, and we are expecting more events with Activ8, and other youth groups in the future. We would like to express our gratitude to WC of Turners and the D'Oyly Carte Charitable trust for their support.





Annual Accounts 2021

The annual accounts for the AWGB are prepared on the basis of meeting the requirements of the Companies Act and the Charity Commission. As a result they have become stereotyped and fail to impart the information that the members really need. Jeff Belcher and I have been trying to make the accounts more meaningful and a simplified version is presented below. Anyone wishing to see the full version can request one from me, Mike Mansfield, treasurer@awgb.co.uk, or within a couple of months look on the Companies House website.

AWGB Charity	2021 Actuals	£	Charity Expenditure	£
Balance sheet			Grants to clubs	
Cash at bank	96,361		Grants - Demonstrator	11,400
Debtors	966		Grants - Discretionary	1,433
Total Assets	97,327		Grants - Events	1,000
Less Creditors and deferred income	-19,338		Grants - Covid	4,137
Net Assets/ Total Reserves	77,989		Total Sums granted	17,970
Charity Income			Other Membership Benefits	
Memberships			Revolutions printing and distribution cost	17,792
Individual Memberships	46,007		Digital seminar costs	17,963
Associate Memberships	2,745		Training	8,939
Corporate Memberships	1,215		Affiliates Public Liability Insurance	6,825
Gift Aid Rects from HMRC	6,534		Total Membership Benefits	51,519
Total Membership Income	56,501		Administrative Expenses	
Digital seminar sales	6,410		General Insurance	737
Training Fees	2,015		Goverance Costs	774
Revolutions advertising	1,895		Show Costs	744
Bank Interest	10		Travel and Subsistence costs	3,957
Miscellaneous Income	1,372		Membership Costs	270
Total Income	68,203		Office Costs	4,745
			Bank, PP, CoHo Fees	357
			Advertising, Trophies and Prizes	734
			Membership of HCA	40
			Total Administrative Costs	12,358
			Total Expenditure	81,847
			Surplus /(Deficit) for the Year	-13,644



Member Training Workshops

Sue Harker

Snainton Woodworking Supplies,
Scarborough, North Yorkshire

6th July 2022

Art Deco Style Bud Vase

Gary Rance

Wendover Buckinghamshire

15th July 2022

Intermediate Advanced
Box/Thread Chasing

Les Thorne

Four Marks Hampshire

13th August 2022

Intermediate Advanced
Spindle and Skew

Sue Harker

Snainton Woodworking Supplies,
Scarborough, North Yorkshire

19th October 2022

Long hole boring, making a table lamp.

These workshops are subject to restrictions at the time and unfortunately may need to be cancelled at short notice. Due to the change in circumstances, we understand that members that have previously booked to the course last year may no longer wish to do so. We are therefore asking that everyone re-applies for the workshops. However, preference will be given to those that have been allocated places previously that were cancelled. If you have any questions, please contact our Development Officer -Steve Gordon. email at development@awgb.co.uk or tel: 07939 371420.

**If a workshop is oversubscribed,
there will be a ballot for places.**

To apply - visit the AWGB website: www.awgb.co.uk and download an application form and send to the coordinator shown on the form. Or complete a 'Training Workshop Application' web form. Only fully completed application forms will be considered.

Doncaster Woodturning Club

All-Day Event

Featuring a Double Hander with

Emma Cook (The Tiny Turner) and Rick Dobney



Saturday July 23rd, 2022

10 am to 4 pm (Doors open 09.30)

in

**Finningley Village Hall
Finningley, Doncaster
DN9 3DA**

£10 for the day including Buffet Lunch and Tea & Coffee all day

**To find out more or book a ticket
(payable in advance or on the day)**

Contact: -

Geoff Pickering on 01977 646902 or by email at plumbob67@talktalk.net

or

Chris Platts on 01226 725647 or by email at chrisplatts@btinternet.com

The 17th International Woodturning Seminar will take place at
Yarnfield Park Training & Conference Centre
Stone Staffordshire ST15 0NL

from 7-9 October 2022

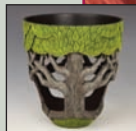


The event will run from Friday lunchtime to Sunday afternoon.

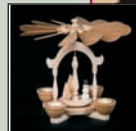
That's one extra demonstration compared to the last Seminar. The event aims to offer something for turners at all levels from beginner to expert. The seminar programme is guaranteed to inspire, educate and entertain!



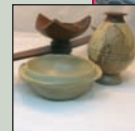
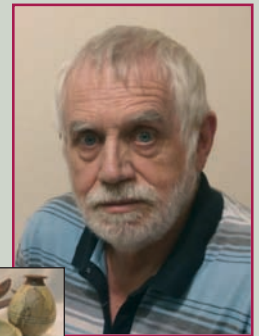
Alain Mailland
France



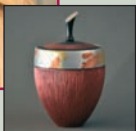
Bob Rotche
USA



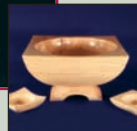
Colwin Way
UK



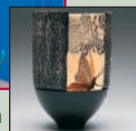
Eugene Grimley
Ireland



Gary Lowe
UK



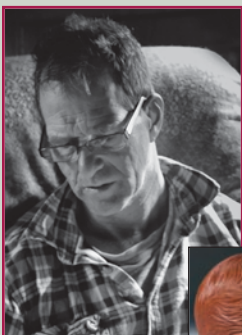
Joe Laird
Ireland



Joey Richardson
UK



Nathalie Groeneweg
Ireland



Neil Turner
Australia

Throughout the event we have trade stands, a raffle and of course the instant gallery where we encourage everyone to bring up to 3 pieces of their best work to display.

Make this a date in your diary, you won't regret it! The seminar is open to AWGB members and non-members alike. We look forward to seeing you there! You can book using the booking form in this issue of *Revolutions* or you can book on the website at awgbwoodturningseminar.co.uk



Nikos Siragas
Greece

All bookings are guaranteed and will be refunded in full if the event doesn't go ahead.

AWGB International Seminar 7th to 9th October 2022

Booking Form

The accommodation comprises en-suite double and twin rooms, and there are a number of accessible rooms. We are pleased to offer a range of attendance options. Please select the quantity required. If you have any particular needs or requests please note them below. (All costs include VAT)

Package	Description	Cost	Quantity	Total Cost
A	Full Weekend incl Accommodation and Meals	£445.00		
AT	Full Weekend incl Accommodation and Meals with Twin room for Two People	£830.00		
AD	Full Weekend incl Accommodation and Meals with Double room for Two People	£830.00		
B	Full Weekend incl Lunches, No Accommodation or Evening Meals	£325.00		
C	Friday incl Lunch, No Evening Meal	£95.00		
D	Saturday incl Lunch, No Evening Meal	£140.00		
E	Sunday incl Lunch	£115.00		
F	Saturday incl Lunch & Evening Meal	£160.00		
G	Full weekend for second person - shared room accommodation & meals only - no access to demonstrations.	£215		
Total Cost				

Name (as you would like it on your badge)	
Address (inc Postcode)	
Email address	
Tel Number	
Membership Number (if applicable)	
Please advise any particular requirements (diet, access etc)	

Data Protection: The information you provide on this form will be used solely for dealing with you as a member of the AWGB; to inform you of AWGB news and to administer your attendance at AWGB events. By signing this form you are giving consent for the AWGB to use your data as described in our privacy policy which can be found at www.awgb.co.uk/privacy-policy. Your data will be used and stored in accordance with this policy.

Payment:

50% deposit on booking, remainder due 4 weeks prior to the seminar.

NB If you are unable to attend your deposit may be refunded at the discretion of the AWGB.

I have paid by cheque/bank transfer/international bank transfer (delete as appropriate). We are unable to take card payments by telephone. Card payments can be made on the website or by sending a payment through PayPal to awgbtrading@awgb.co.uk

Signed:

Date:

Payment by cheque payable to **AWGB Trading Ltd**, or

Bank transfer to sort code 09-01-28, Account number 41132390 (use family name/2022 as reference) or

From overseas IBAN: GB88ABBY09012841132390 (use family name/2022 as reference)

Please send this form (with cheque if appropriate) to: Jeff Belcher Oak House, Hanley Castle, Worcester WR8 0BJ

Tel: 07798 746296 Email: seminar@awgb.co.uk

Weston Woodturning Circle Celebrates its 20th Year

John Hepworth

In 2002 two founding members placed an advertisement in our local paper stating their intention to form a woodturning club based at our local football club premises at Weston AFC.

At our first meeting we had 7 signed up members attend and relied upon the founder Chairman Bryan Jackson providing his own lathe and equipment at our early meetings.

Shortly after the club was formed we were fortunate in obtaining grants from our local council and the National Lottery which enabled our club to buy its first lathe which was a small Vicmarc lathe along with some tools etc.

How things have changed! Over the years we managed to increase and maintain club membership to average between 45-50 members and regularly have an evening attendance of 30 plus members. The club became an Affiliated member of the AWGB and as such enjoys all the accessioned benefits.

Following receipt of a grant from the AWGB we were able to purchase technology that enabled us to provide quality sound and visuals which is still employed at each meeting along with the Zoom facility for those vulnerable members who have chosen not to attend live meetings.

We continue to have a mix of monthly evening entertainment with both Club and outside demonstrators.

Most club members want to improve their skills so we now have 3 club lathes 2 of which are dedicated to tuition for beginners/intermediate/and advanced woodturners.

The tuition to club members is provided by advanced woodturning club members.

A show and tell each meeting encourages members to bring along their successes and sometimes their failures for discussion.

We continue to provide a monthly newsletter to each member to maintain member contact which was invaluable during the Covid lockdown.

During lockdown committee members on a rota basis contacted all members to ensure their well-being.

Our activities have included attending the Weston Flower Show at which we raised valuable funds for our club charity and raised our profile in the local community.

We have raised in excess of £5500 for various charities over the years and this year we are supporting our local food bank.

In celebration of our 20 years as a club our July meeting will be an open night with an all skills demonstration taking place. It is our intention to invite local clubs such as Round Table, Lions, Rotary and the general public.

John Dilley a club member and former club Chairman received help and support from our club in obtaining a bursary award from the Worshipful Company of Turners in 2017 and assistance in the "Certificate in Woodturning" enabled him to pilot The Diploma in Woodturning of which only he and one other AWGB member have completed in the country.

We enjoyed some enjoyable demonstrations with Keith Fenton, Colwin Way, and Emma Cook (the Tiny Turner) each providing an all day demonstration.

Throughout my 20 years as a member of this club our committee continues to serve us well and my message to all our members is come forward and have a go. On the basis of it's your club so why not have your say.

My one disappointment in my long tenure is that over many years we have been unable to attract and retain junior members which in the great scheme of things should be our future, are many reasons for this and a debate for another day.

I am very proud to be part of a very proactive friendly club which welcomes new visitors on a regular basis.

Many club members past and present have played an important part in making our club a success some sadly are no longer with us but are not forgotten



Robert Sorby

PROUDLY MADE IN SHEFFIELD, ENGLAND 

THE No.1 CHOICE For Woodturners!

THE MOST COMPREHENSIVE CHOICE OF WOODTURNING TOOLS ON THE MARKET

- Core Woodturning Tools
- Woodturning Sets
- Specialist Woodturning Tools
- Sovereign System
- Woodturning Accessories
- Measuring Tools
- Sharpening Tools

Made by Craftsmen for Craftsmen



For more information or to find your nearest stockist, visit our website.

www.robert-sorby.co.uk

Robert Sorby, Sheffield ENGLAND

Tel: +44 (0) 114 225 0700 E-mail: sales@robert-sorby.co.uk

FOLLOW US ON SOCIAL @ROBERTSORBY



Who needs a training course anyway! (Maybe we all do?)

Robert Baird.

My turning adventure started some forty years ago, with no internet and only one book containing a few black and white pictures I struggled to produce anything worthwhile. Eventually the neighbours complained about the noise (and the expletives) so I sold the lathe and decided turning wasn't for me!

Scroll forward 20 years and my 10 year old son expressed an interest so I bought an Axminster mini lathe (still no internet) again we were out of our depth, my son lost interest and the lathe stood unloved in a corner of my workshop until 5 years ago.

Then at last it dawned on me that with the advent of the internet there might be a few YouTube tutorials... so I dusted off the lathe and randomly found a video from Martin Saban Smith "How to turn a pen" it looked fairly simple so I gave it a go and the results were surprisingly good. From then on I soaked up every available YouTube video on the subject and eventually tried other small items. Like many I had become hooked on woodturning.

However my technique was self taught watching the online videos and I yearned to go on a course, along came the AWGB offering a variety of courses, some in my area and all for free! So I duly applied and to my surprise was given a place on a course with none other than Martin Saban Smith at his delightful workshop in Four Marks, Hampshire.

Having only turned in private I was slightly worried that my turning shortcomings would be all too obvious and I would embarrass myself. I shouldn't have worried, Martin could not have been more welcoming and helpful, there were just four of us, with slightly differing levels of experience but Martin was able to give much one to one tuition as well as group training and teach us the intricacies of turning a Fibonacci bowl. All in all a most enjoyable day, did I say it was free? Amazing...

So I came home with a lovely bowl which now has pride of place in the living room and a feeling of extreme satisfaction on having spent a wonderful day with like minded individuals, improved my turning technique, gained confidence and it didn't cost me a penny, apart from the stuff I bought in Martin's very well stocked shop at the end of the day (don't tell my wife!)

All thanks to Martin and the AWGB. I can't wait to go on the next course, why don't you?



- Hardwoods
- Wood finishes
- Australian Burrs
- Exotic Timbers
- Woodturning Blanks
- Woodturning Courses (see website for dates)
- Woodworking Machinery
- Woodworking Tools
- Fencing, Gate & Decking Products
- Bespoke Garden Furniture

**Timber, Tools & Machinery
for D.I.Y • Carving
Woodturning • Furniture Projects**

shop@wlwest.co.uk

Off A272 Midhurst to Petworth road opp The Halfway Bridge Inn



Open: Mon-Fri 8-5 & Sat 9.00-1.00pm

www.wlwest.co.uk

Egg-citing times !

Graham Legg

A group of Scouts at Kegworth (Leicestershire), have recently enjoyed a day of woodturning, thanks to The Trent Valley Woodturning Club, and the AWGB.

In October 2021, the AWGB organised a SEND woodturning day in Kegworth, kindly hosted by The Trent Valley Club, with their superb facilities. During the day, light refreshments were made available in the Kegworth Village Hall, thanks to the local Scouts group. As a way of saying, "Thank you" the AWGB offered a day of woodturning to the Scouts.

The opportunity to "Have a go" was taken up by no less than 16 Scouts, and their Scout Leaders. Thanks to the generous support and tuition by The Trent Valley Club, the day was organised around 1-1 tuition for eight Scouts in the morning

and afternoon. The Derbyshire Dales Woodcraft Club (DDWC) also provided a number of Tutors for the day.

The chosen theme for the day was making Egg Cups. A demonstration by Ian Woods from the Trent Valley Club, was quickly followed by 1-1 tuition for those involved. All Tutors were able to demonstrate the "ABC" of safe woodturning, and demonstrated the use of various tools, in particular the spindle roughing gouge, the parting tool and a small bowl gouge.

The level of concentration, excitement and achievement was brilliant to see. Every Scout was able to take home their own Egg Cup. Next time, maybe we will be making Eggs?

The AWGB would like to thank the Kegworth Scouts for their great enthusiasm, excellent safe practice and participation in this event. The Trent Valley Woodturning Club once again provided their fabulous facilities, and a whole team of Tutors, for which the AWGB are extremely grateful.



**Association of
Woodturners**
of Great Britain



**Development
and Training**

Young Turners Training Programme

Date	Topic/Technique		Venue
June 11th 2022	Various Projects and techniques Workshop Health & Safety	Les Thorne	The Woodturners Shop, Four Marks Hampshire
August 6th 2022	Various Projects and techniques Workshop Health & Safety	Dennis Wake	Hartlepool
November 19th 2022	Various Projects and techniques Workshop Health & Safety	Les Thorne	The Woodturners Shop, Four Marks Hampshire

**For application forms and information visit... www.awgb.co.uk
Or contact... Ron Caddy - 07903 313065 e-mail youthtraining@awgb.co.uk**

Shooters Hill six form college demo

Kevin Hutson



It was an early start, to get to Woolwich London, Shooters Hill six form college, Neil Suttle the teacher in City and Guilds Carpentry and Bench Joinery had arranged for me to demonstrate woodturning to his classes

I arrived to a warm welcome from Neil and Bill Vikho who is Head of department in construction, and after a cup of tea we unloaded my lathe and equipment to set up in the machine shop.

The students arrived promptly at 9.00am, I introduced myself and gave a Health and Safety talk about the lathe and explained the itinerary for the day.

Neil and myself had already talked about what I would do, but then Neil suggested it would be a good idea if each student had the opportunity to practice using the gouges/chisels on the lathe while I supervised.

I started with turning a scaled newel post in sapele and straight away students were putting their hands up wanting to ask questions, I thought this was brilliant as the students were clearly focused and wanting to learn all aspects of what I was teaching them.

I was most impressed on how each individual student approached the use of the spindle roughing chisel and listened to my instructions, I was also very surprised with their excellent hand tool skills.

This proved to be a very busy morning with every student showing real enthusiasm to learn new skills and to experience a different way on how to cut/form a product from wood.

All the students were progressing very well at the lathe and learning new skills, they also were asking questions on other types of chisels and their uses, in particular the skew chisel; So after a few instructions/demonstrations, I allowed them to use the skew and they all managed to show good competence in its use.

The afternoon tuition was with the year 2 Bench joinery students and again I was very impressed with their hand tool skills, they asked lots of questions like speed levels of the lathe and what the correct tool rest heights should be.

Neil commented on how focused the students were whilst undertaking their tasks

My reflection of the day

All the students are studying very hard for their City & Guilds carpentry courses and then planning for a future career in the construction industry.

Just being in the college's environment and seeing their workshop facilities as well as observing the very high level of tuition that the students are getting I feel reassured that the construction industry will have skilled trades people for the future.

I personally feel teaching technical skills to our young students can only be an advantage to improving a construction industry shortage of skilled tradespersons in this country and therefore not having to be reliant on persons coming from abroad

I would like to thank Neil Suttle and his colleagues from Shooters Hill six form college for inviting me and giving me an insight to the modern City & Guilds curriculum in Construction.

On my drive home I reflected on a busy day but fulfilling one and I had a sense of giving back to the community.

TRADE CORNER



Timbersource Shepton Mallet – **Craft Packs**

These craft packs are available in regular £29 or Large £49 and the price includes delivery. If AWGB members would like to call in and see us they can get a 10% discount with their membership card. The delivery option presents a 'lucky dip' aspect, but our walk-in service allow turners to fill a box with one of our sales team.

These boxes are perfect for woodturners because they contain at least 4 different types of quality hardwood. Species include Euro Oak, American Oak, American Ash, Walnut, Iroko, Sapele and others. We are also putting in Teak from Ghana.

See <https://www.timbersource.co.uk/> for more details.

Birdbox Article

Paul Wade



With Easter and Spring just gone many of us woodturners will be thinking about our first market stalls of the year. The birdboxes I'm going to describe have been really good sellers for me and provide plenty of creative variations. I'd be delighted to see your creations and if you find the ideas useful that's even better. I have had great fun making over 40 of these birdboxes and I learnt many things trying to productionise the process which I also describe here. I'm a software engineer by trade so having something physical to hold at the end of the day has been a real joy and a new experience.

Like many woodturners I often draw inspiration from craft stalls, Instagram and nature. On this occasion I was looking for alternative designs for a birdbox as most were square or rectangular. I saw one done in ceramic which had a nice round base and something like a mini tent for a lid. I liked the base and thought that would be relatively easy so, that just left the top to design which I also wanted to be round and made on the lathe.

Other thoughts sprung to mind like, how big is the hole? How long is the perch? How close is the perch? What finish should I use? Other thoughts should have occurred to me but didn't, more on that later. Let's start at the bottom, the base is essentially a straight sided bowl but I would need a tenon on the bottom to hollow it out. Then to finish the base with a nice shape I would either need a longer piece or a jam chuck to hold the hollowed out end while I turned the base. After several mis-steps I did find a good way which I'll describe here.

Researching I found that Great Tits and Blue Tits do not like a perch and can fly straight into a 25mm hole. Types of wood don't seem to be very important, internal dimensions have some limits and the inside should not be oiled or have any other finish. OK grab some off-cuts and lets get to it.

For the base you could use a branch or log cut to around 30cm by 22cm across, I really like the weathered look of treated timber so I try to get off-cuts of 6x2 (C24's) from building sites or builders doing extensions. If you ask nicely you will usually get the off-cuts for free I then cut these into 6 x 6 squares and glue them together. Be sure the wood is dry, if not the glue will not soak into the wood and will not set. You will need three pieces as shown, originally I was using four pieces but with more waste. Using a faceplate I securely hold the centred block or glued sections. Pretty much any off cuts will do and mixing types only adds to the rustic look and feel.



Round off the block or log leaving bark or knots as you wish and hollow out the middle, the wall thickness might range from 1cm to 3cm and it's not particularly important but it does affect how the lid fits so plan it carefully. Thicker is warmer for the birds and adds a little more weight which I like and customers seem to like also. You want the depth to be about 11-15cm with a slightly concave base. If the distance between the lowest point and the bottom of the hole is more than 5cm be sure to make a little ledge to help birds climb up. Don't worry about making the inside edges smooth, birds don't care and again it helps them climb out. I like the exterior to look rustic but the finish is oiled and



doesn't need to be perfectly smooth either, 150 grit is plenty in my view. Sanding is 60 seconds at most.

Before removing the hollowed base think about how it will attach to the lid, I take a square tool and create a small shoulder on the top to create a nice tight fit with the lid. This is purely personal choice, I'm not aware of any

structural logic around this part. Finally remove the base from the face-plate and set aside for now. You could equally turn between centres, add a tenon and then hollow out. Don't worry about the bottom of the base for now, we will remove and shape that later.

For the lids I use planed or roughly sawn planks and cut into squares, again a great way of using up some of those off-cuts that us woodturners just can't throw away. I always use a nice colourful wood such as Sapele, Mahogany or my favourite Rosewood which I've been picking up at Yandles for £20 a length. I can get 7 or 8 pieces out of a length which is only around £3 per birdbox, once oiled the colour is worth it.

For the lid I glue together a 6x6 piece of Rosewood with gradually smaller pieces say 5x5 and then 4x4. If the overall depth is at least 8cm I will stop there although one more piece is required for the top, we will glue this on later. Be careful attaching the faceplate to the top of the lid (the smaller end), often I am using only 4 screws but the weight is not a problem. Spin up the lid and make round but don't worry too much if one side of the bottom tier has a straight section, you can make the hole beneath it and it becomes a design feature

Think about the shape you want the lid to be, I often undercut with a parting tool the make the look a little oriental. Other times I will go for a more rounded lid, there is a huge creative potential here, have fun and try different things. With the outside rounded and shaped (except the very top) you are ready to move on to the interior of the lid. There are three important steps at this stage:

1. Create a groove equal to the thickness of the base so that the lid and base fit tightly together.
2. Fit the base, position the tail-stock to hold the base in place if necessary and then turn the bottom of the base.
3. Hollow out the lid to create more space but create a dovetailed recess for your chuck which enables you to turn the lid around and finish the top of the lid.



For step 1, make a rough circle with a pencil to guide you, spin up the lathe and mark your first guess at the recess, I often use a parting tool. With my first attempts I had to stop the lathe perhaps a dozen times to get this recess to fit snugly with the base, take your time to get the fit correct. Once the

recess is complete the base should be tapped into the lid and held with the tail stock so you can shape the base. That completes step 2.



Step 3 requires a little thought and it may vary depending on your chucks. I use the Axminster SK114 which has the ability to hold an internal tenon up to about 90mm so I must be careful not to go over this. Other than that hollowing out the lid is easy enough, I try to leave a nice pattern on the ceiling of the bird box. Check the lid can be held in the chuck and flip it around.



With the lid now reversed think about how you want to finish the top. If the lid is deep enough just finish the top with a nice shape and you're done. If there is not enough depth or you have a nice piece of wood to use as a finial style top, make a flat area on the top and glue a block on. Secure with the tail-stock and turn as

required once the glue is dry. In my example I added some detail to the Walnut top with a spiralling tool to add a little style.



Generally I use Titebond and I have found that I can glue and turn with the tail-stock in place after only a few minutes. However I will leave the tail-stock in place for at least an



hour before I remove it and finish off the top with a light sand. Other options are to glue and screw the top section in place.

At this point you have the base and lid all done and it's time to fit it together. If the base doesn't fit securely you always have the option of gluing the base. Some folk prefer the birdboxes to open but I have sold both and the RSPB wasn't clear on the

need to clean them out each year. In nature the birds do this themselves anyway. To fix the lid drill two very small holes in each side of the lid and insert nails to hold it in place. I use pins with a decorative head which can be easily seen and removed when needed. When I glue the base I do not use additional pins so it is easy to remember which is which.

Next drill your 25mm access hole about 6-16mm below the lip of the lid. Many of the 'Tit' family of birds do not like a perch so I don't use one. I have had a great deal of trouble with drilling this hole, mainly because my 25mm bit has a leading threaded cone that grabs to well and grabs chunks of wood or just stops in its tracks. I would be very interested in expert opinion on this but what I figured out was to drill a pilot hole about 5-6mm and then follow up with the 25mm bit. I still have to use low speeds and very light pressure but it does leave a nice clean hole.

The final piece is the string to hang the birdbox up, take a long drill bit and make a 2-4mm hole perpendicular to the access hole. Thread a piece of garden wire through the hole, overlap the wire and then pull this knot through the hole so it is hidden. This makes the string look neater and will also increase its strength.

Finally hang up the birdbox and grab your Tung Oil, apply generously to the outside only, leave to dry and apply a second coat. Rosewood and Sapele literally come alive when oiled and provide a beautiful and weather proof finish often with chatoyance effects which is caused by the grain being under stress as it grows. The effect is truly lovely and oil enhances this look which gets noticed every time. I have had birdboxes outside in all weathers for well over a year and they still look great but I do advise customers to oil once a year for best results.

Customers love to know the woods so if you do use multiple off-cuts write a ticket such as made with love from Oak, Sapele, Pine and Rosewood. Prices are up to you of course and regions vary but it will probably take 4 hours and you need to reflect that in the price. Over time and with practice you will improve on that time considerably.

I have had great fun with these and I'm sure you will too, I have also created a matching bird feeder which I hope to cover in another article later in the year.

Turn well and turn safe, have fun and share the love of wood with your customers.

Allan Calder's Ltd Sandpaper Supplies

Unit 2B Churnet Works, James Brindley Road,
Leek, Staffordshire ST13 8YH



We are supplying top quality brands of sanding abrasives for all types of wood turners.

www.sandpapersupplies.co.uk

Email: sandpapersupplies@yahoo.co.uk
Tel: 01538 387738



CHESTNUT

PRODUCTS

FINISHING SCHOOL

Using Liming Wax.

1



1 Liming Wax is a soft paste wax blended with titanium dioxide to make it a brilliant white. It is used to give a limed look to open grained woods, especially ash and oak.

2



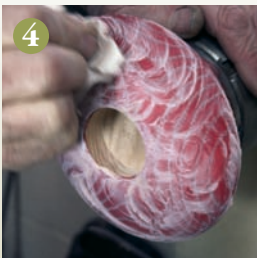
2 Be sure to remove any scratches in the timber before starting. Liming Wax looks great over a stain, Ebonising Lacquer or on bare wood. If using a stain be sure to leave enough time for it to dry. Use a Liming Brush to open the grain for a more dramatic effect.

3



3 Apply Liming Wax over all of the surface liberally using a soft cloth, being sure that the wax covers all of the grain.

4



4 Wait a few minutes then remove the surplus Liming Wax with a clean cloth. The wax will stay in the open grained areas.

5



5 Wait fifteen minutes then polish using WoodWax 22 Clear to protect the Liming Wax from discolouring with handling. It is not advisable to apply a lacquer over a lime waxed surface. Alternatively apply our Microcrystalline Wax to give a more hard wearing finish to your piece.

See our YouTube channel for more tips!
More information available from your local stockists or contact us at:

PO Box 260, Stowmarket, IP14 9BX
Tel: 01473 890118
mailroom@chestnutproducts.co.uk
www.chestnutproducts.co.uk



“you must be joking” start a New Woodturning Club during Covid!

The birth of Wherry Woodturners

Reflecting on the personal challenges people were facing during lockdown and the additional challenges for Woodturning Clubs with restrictions on meetings, a group of five woodturners had become frustrated with the status-quo and the downward spiral of same old, same old approach. During September 2022 we stopped talking and met for the first time in the ‘largest’ workshop, from the initial meetings we decided on four objectives that we needed to achieve for success:

- A meaningful and locally focused name,
- To become affiliated to the AWGB,
- To be registered as a Charity as a CIO
- Help from Friends

The Name, that was a challenge, we had twenty opinions, we settled on Wherry Woodturners, the Wherry being the historic boat that traded and sailed on the Norfolk Broads.

From there we needed help otherwise we would remain a group of five friends in a shed. If we were going to succeed as Wherry Woodturners we needed friends. Some of us had served on other club committees, none of us had engaged with AWGB or had developed a woodturning club and had no idea about charitable status.

Making Friends

We realised very quickly we needed to make friends and would need to engage with quite a few people if our idea was going to work.

First point of reference was Revolutions, checking out the back copies for ideas, we had the contacts and importantly found an article from September 2020 by Mike Mansfield (AWGB Treasurer) about converting a club to charitable status. He provided a wealth of information and allowed us access to his Clubs constitution and handbook, both approved by the Charity Commission, to use as a basis for ours.

We needed to understand the rules for a Club to be Affiliated to the AWGB that lead to help from John Peachey (AWGB Membership Secretary), we needed a minimum of ten AWGB Members to enable Affiliation. Coming from clubs that had seen falling numbers during the pandemic this was our first big challenge.

We spoke to the two larger local clubs, Waveney and Norwich to let them know our plans as we did not want to step on their toes and be seen to be attempting to steal their membership. AWGB helped informing non affiliated members in our area of our plans, we started a poster campaign in shops and community centres to raise our profile and let people know what we planned.

Our plans were modest, 11 members by Christmas 2021, 20 members in 12 months, 30 members in two years. Our first meeting was set for December and then Omicron hit, postponed to January, then we finally met in February.

Engaging with the Charity Commission was the next challenge, which proved to be a lot simpler than we first thought we are now a CIO (A Charitable Incorporated Organisation (CIO) which is a corporate form of business designed for and only available to charitable organisations). It made us consider our objectives, audience accessibility, what we could offer, subscriptions and plans, it was a very positive process. We bounced ideas between us to ensure everyone was on board with the application.

Our Objectives needed to be inclusive to attract a wide potential membership and acceptable to the Charity Commission for approval. They were finally agreed as:

- To promote the craft of woodturning for the public benefit and in doing so raise the appreciation of the creativity, skill and heritage of woodturning.
- To advance the education of the public in the craft and skill of woodturning.

During October and November the five of us formed the initial Club Committee and agreed who would become the first three Trustees for the Charity. We were approved by the Commission in November 2021 two weeks after applying.

Then we needed a venue ten members would not fit in the shed, we finally agreed on the local Village Hall, which has a capacity of over 100, and really excellent facilities.

With the club's name sorted we contacted the Wherry Maud Trust, a charity that recovered one of the few remaining sailing Wherry's in Norfolk from our local Broad at Ranworth. We are now partners with the Trust who have provided old renovation wood for the Club to use for training and developing products for the Trust to sell.

CXS Tools
Abrasives specialist and sanding equipment supplier.



As well as abrasives, we stock Air filter machines to filter fine hazardous dust in workshops.

Products are available online at –
www.cxstools.co.uk

Or contact us at: info@cxstools.co.uk

Success of the Poster Campaign

During the initial poster campaign we were anxious, would people be interested in a new Club?

During this campaign we were told “you must be joking starting a club during Covid you're bound to fail”, setting up in a village hall “won't work, people won't come” and the “location will be a problem”, Too confound the nay sayers, by early December we had ten members and we were Affiliated to the AWGB before Christmas, by January we had over 30 people waiting for a meeting to find out more and the enquiries keep coming in.

We needed equipment and in January applied for a discretionary grant from the AWGB and they provided great support, a Lathe, Chuck, Tools and Face shields, in addition a demonstrator grant and our first professional demonstrator took place in April 2022.

We finally met in February with a howling storm outside, we lost power for over an hour, but carried on by torch light, 23 people turned out for the first meeting to talk turning and eventually see a Demonstration of spindle work, a success!

The second meeting in March saw another demonstration with 25 people attending, by then we had managed to invest in Audio Visual kit to enable people to engage and contribute much more effectively.

In March our friends at Norwich Woodturners kindly loaned us their spare lathe, (until we get sorted with additional kit). At the same meeting it was evident that a high proportion of people were new turners needing support and learning. We went out on a limb and brought plans forward twelve months for a training academy.

The first training evening in March was a great success, 14 people attended with three learning stations to introduce many new turners to Spindle turning, Bowl turning and sharpening all supported by experienced club turners. The next training session will be a full day event in May.

Bringing it all up to date

At the time of writing, six months after our first meeting in a members workshop we have surpassed our first year membership target with 23 members and a further 30 people showing interest in what the Club is doing some of whom will join in the future.

We have developed our Social Media presence with a Facebook page linking to over 600 people, our website keeps attracting interest and new members and a quarterly newsletter is provided to anyone who requests an electronic copy as well as to all members.

We have a very active committee with a core team of volunteers to help develop and grow the club for the future. So in response to the nay sayers if you have a vision and commitment that people can believe in, it will work, Covid or no Covid!

We will soon be developing our plans for 2023 if you want to learn what we are planning keep an eye on the website www.wherrywoodturners.org.

Wherry Woodturners is based in South Walsham, a small village east of Norwich in Norfolk, if your on holiday in the beautiful Norfolk Broads look us up.

**Association of
Woodturners**
of Great Britain



Important Notice

We are setting up a members only area on the website for all individual, associated and affiliated club members.

There will be a single password for all which is **#Fr4xinus#**.

Keep this somewhere safe if you plan to use the members only area on the website! Please don't share the password with anyone else.

**Association of
Woodturners**
of Great Britain



Regional Representatives required

**The Association of Woodturners
of Great Britain**

Has an immediate vacancy for the
position of

Regional Representative for the South East Region

also

Regional Representative for the South West Region

Anyone interested in the position should
contact the Secretary for further details.

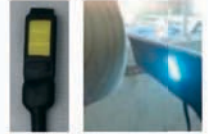
Contact Bryan Milham (Secretary)
at secretary@awgb.co.uk
or telephone
07876 321 293

I wanted to let the Association of Woodturners of Great Britain know what a wonderful job The Burcot Woodturners did in restoring my "Windsor" chair. John Smith put me in touch with John Cotterell, who took on the task of restoring the chair to its functional glory and thus enabling it to serve its purpose as my kitchen chair for many years to come. It was a complicated job and John Cotterell performed the job with professionalism and expertise.



Woodart Products

Magnetic LED Lights



Pyrography units – Razertip and Scorpion



Pyrography Accessories – Tips, Fume Extractors, etc..



Micro-Drills – 3500rpm and 4500rpm units fitted with 1/8" (3.175mm) collet chuck



Cutters and Burrs for Micro-drills (and other rotary tools)



Art Materials & Equipment



www.woodart-products.co.uk

john@woodart-products.co.uk

Tel.: +44 (0)7770 226640

Note from the editor

Thanks to everybody who has contributed to this newsletter over the last few years.

I love to receive all your ramblings and tales, stories and tips, jokes and yarns.

Are you working on a project you can write about - how you are doing it?

Don't forget to include photographs, maybe some illustrations and any supporting materials if applicable.

This is **your** newsletter and I need your contributions please.

We pay for your "How to" and "turning tips" articles.

Send to: editor@awgb.co.uk
or my address is on page 3.

Happy Turning

sheila



Find your local stockist at:
www.hamletcrafttools.co.uk/stockists

hamlet
CRAFT TOOLS

Brought to you by:
HENRY TAYLOR
(TOOLS) LIMITED
EST. 1834

*View our full range of signature tools designed by
world class professionals on our website*

www.hamletcrafttools.co.uk

email: sales@hamletcrafttools.co.uk | tel: 0114 232 1338 | web: www.hamletcrafttools.co.uk

HENRY TAYLOR

(TOOLS) LIMITED

EST. 1834



*Visit our website
to find your
local stockist:*

www.henrytaylortools.co.uk/stockists

web: www.henrytaylortools.co.uk | email: sales@henrytaylortools.co.uk | tel: 0114 234 0282