



Revolutions

THE NEWSLETTER OF THE ASSOCIATION OF WOODTURNERS OF GREAT BRITAIN

Issue No 68

£1.95 Free to members

March 2004



*The Mill, Millers Dale
Nr Buxton, Derbyshire
SK17 8SN
Tel: (01298) 871636
Fax: (01298) 872263
Web Site
<http://www.craft-supplies.co.uk>*

Demonstration Days Year 2004 at Craft Supplies Ltd

Craft Supplies hold FREE Demonstration Days at The Mill every first weekend of the Month

Saturday Demonstrations 10.00 am - 4.00 pm

Sunday Demonstrations 12.00 pm - 4.00 pm

Come along and see the following demonstrators

[illegible]

Executive Committee

of the Association of Woodturners of Great Britain (www.woodturners.co.uk)

President

Ray Key, The Firs, 53 Weston Road, Bretforton, Nr Evesham WR11 5HW
Tel/Fax: 01386 830142

E-Mail: ray.key@talk21.com

Chairman & Newsletter Editor

Mike Dennis, 72 Hawes Close, Northwood, Middlesex, HA6 1EW
Tel/Fax: 01923 829844

E-Mail: michaeldennis07@aol.com

Vice Chairman

Tony Witham, 39 Horsey Road, Kirby-le-Soken, Frinton-on-Sea, Essex. CO13 0DZ
Tel: 01255 671697

E-Mail: tony@awitham.freemove.co.uk

Treasurer

Mike Morley, Lyncombe House, 7 Deepwell Drive, Camberley, Surrey. GU15 2HF
Tel/Fax: 01276 23424

E-Mail: awgbtreas@hotmail.com

Secretary

Lionel Pringle, The Stacks, Sandrock Hill, Crowhurst, Battle, East Sussex., TN33 9AT
Tel: 01424 830170

E-Mail: lepringle@clara.co.uk

Membership Secretary

Derek Phillips, 15 Greens Road, Cambridge. CB4 3EF
Tel: 01223 312134

E-Mail: derek.phillips@virgin.net

Trade & Business Liaison

Tony Walton, 7 Maple Leaf, Tiptree, Colchester, Essex, CO5 0NJ
Tel: 01621 810949

E-mail: twwoodturning@lineone.net

Members Development

Bill Care, 14 Capel Close, Troston, Bury St Edmunds, Suffolk, IP31 1EP
Tel: 01359 268190 (Evenings)
Tel: 01449 711999 (Daytime)

E-mail: bill@billcare.co.uk

Web Master

Brian Partridge, Homeside, Lady Lane, Hadleigh, Suffolk, IP7 6AF
Tel: 01473 828489

E-Mail: brianpart@aol.com

Health & Safety

Peter Hockley, 6 Brook Croft, Marston Green Birmingham, B37 7EP
Tel: 0121 779 3220

E-mail: peterhockley3@aol.com

Regional Representatives

Midlands & Wales

John Buckland, 20 Cordle Marsh Road, Wribbenhall, Bewdley, Worcs, DY12 1EJ
Tel: 01299 403842

E-mail: jjbsnr@jbuckland.fsnet.co.uk

North & Scotland

David Grainger, Laurel Bank, Kirby Thore, Nr Penrith. Cumbria, CA10 1XN
Tel: 01768 361744

E-mail: woodinwest@care4free.net

South

John Wilson, Bunkers, 19 Chiswell Road, Poole, Dorset. BH17 9FB
Tel: 01202 246332 Fax: 01202 247682

E-mail: johnvwilson@aol.com

Eastern Counties

Tony Walton (as above)

Chairmans notes



What do you think of the new style Revolutions and the introduction of colour? We are only putting colour on the outside covers and two centre pages for the moment.

It only seems like last week that I was writing my first set of Chairman's notes, yet here we are 4 years later and I am writing my last. I hope you all had a good

Christmas and a happy new year. Ours was quiet but that is the way we like it.

During my 4 years as Chairman I feel I have helped to develop the Association into a much stronger organisation that it was 4 years ago. Listed below are just a few of the improvements that have happened during this time.

- The Members Development programme
- The Corporate Member scheme
- Improved discounts to members
- Increased number of Affiliated Branches
- Two very successful seminars
- Worked more closely with other woodturning organisations
- More publicity through the woodturning press
- The introduction of colour into Revolutions
- Involvement with the Tony Boase Tribute fund
- Helping more young people take up woodturning

As you will see later on in this newsletter we about to introduce new proposals that will make it easier for other woodturning clubs to join us. These proposals are set out in full with a ballot paper for members to vote on the proposals. I urge you to complete your voting paper and send it back as soon as possible.

As I looked forward to my retirement from the committee and with time to take up my new involvement with Ornamental Turning I was asked if I would stay on the committee and look after all of the Associations publications (except Revolutions) and data. After a great deal of soul searching I decided to accept the job. In my deliberations I thought about the years I have spent on the Executive Committee, the wonderful people I have met and worked with, and the enjoyment I got from it. Was I going to throw all that away and become a hermit in my own workshop – it is not me!! At the same time Bill Care was finding it difficult to cope with his woodturning business and continue with the editorship of Revolutions. I volunteered to take on this job as well. What is they say about what goes round comes around!

I look forward to these new challenges and will help the Executive Committee and the Chairman elect Tony Witham as much as I can.

Mike Dennis

Contents

Chairman's notes	2
Editorial	3
Lets hear it for the Association	5
Commissions, Tuition & Demonstrator lists	5
Beginners Projects	6
400th Anniversary competitions	8
Our Native trees	10
The Jimmy Clewes experience	12
Middlesex Woodturners seminar	14
The Register of Professional Turners	16
AGM Agenda	17
The Way Forward	18
Revised draft constitution	20
AWGB Branches	23
Tips & Tricks	24
Selected pieces from 2003 seminar	25
Members discount scheme	26

Articles, letters, tips, adverts etc featured in this Newsletter do not necessarily carry the endorsement of the Association of Woodturners of Great Britain.

DATA PROTECTION ACT

If you object to your name, address and telephone number being held on a computer belonging to the AWGB, then please write to the Secretary. (Address Opposite)

AWGB LAPEL BADGES

(Brass & Enamel)

£2.50 p&p inclusive

CLOTH BADGES

For sewing on Smocks etc

£4.00 p&p inclusive

CAR STICKERS

£1 and sae (9"x6") or postage free with badge orders

Send Cheque etc, to Tony Walton (Address Opposite)

MAKE ALL PAYMENTS TO AWGB

Front Cover

Selected pieces from the 2003 seminar
Top - Jacques Vesery
Bottom -Reg Hawthorne

Copy deadline
for the next
edition of
Revolutions
15th April
2004

Editorial

As already stated in the Chairmans notes this edition of *Revolutions* has a new style and colour has been introduced.

Before I move on to my editorial I want to say a big thank you to Bill Care for the wonderful job he made of *Revolutions*. I know he enjoyed doing the job but his business must, obviously, come first. I know that he made good friends with a lot of people through his short period as editor and I hope those people will support me as much as they did Bill.

This edition contains a lot of important information and some that you have to respond to.

The Way Forward

I have in my capacity as Chairman been around the regions meeting with officials from the branches. These meetings were, in the main, to present the proposals contained in our presentation entitled *The Way Forward*. The text from these presentations are printed on Pages 18 and 19. It is these proposals and the revised constitution that you are being asked to vote on using the ballot paper that came with this issue of *Revolutions*.

From the discussions that followed each presentation it was good to see the strength of support for the AWGB. A lot of shortcomings in our organisation were highlighted and some very good suggestions were made. What was abundantly clear was the desire for more Regional meetings with members of the Executive Committee so that Branches could talk about their difficulties and share experiences.

Ballot Paper

Please fill in the ballot paper and send it back as soon as you can. The ballot will enable the Association to welcome more clubs to its fold and hopefully more members. Each paid up member is entitled to one vote and family memberships get two votes. If you have not received a ballot paper let me know immediately. **Remember that your ballot paper must be with Lionel by the 21st March at the latest.**

Commissions Tuition and Demonstration forms.

For those members who provide any of these services please send the form enclosed back as soon as possible.

Why not send it back with your ballot paper and save postage.

Discount scheme

We have reprinted the list of firms who give discounts to members. The discount scheme is growing and if you know of a woodturning related company who would be prepared to give our members a discount please let Tony Walton know. The benefits of this scheme can be highlighted by just one example - To join Yandles wood club to get the 10% discount offered to AWGB members would normally cost £10 per year. That is 80% of your subscription saved.

Data Management

As I stated in my Chairmans notes I am taking on the role of updating and keeping all of the Associations data with the exception of the membership details. Derek Phillips will continue to update this information and regularly feed the information to me. You may be thinking to yourselves what data does the association keep. Below is a list of some of the important data that we keep.

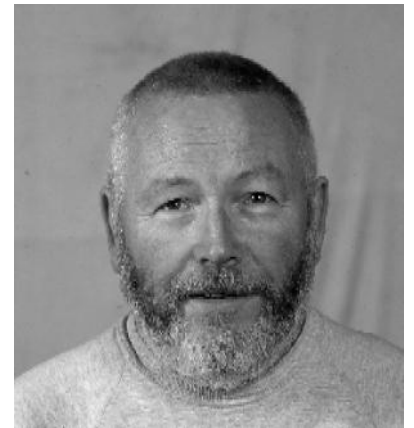
- Affiliated branch information
The secretary details, where they meet and what time. E-mail and website addresses.
- Membership details
Name address etc, what branch they belong to, e-mail and website addresses and the type of membership
- The list of members offering Tuition
- The list of members who accept Commissions
- The list of members who demonstrate
- The list of traders who offer discounts
- Every woodturning club and their details in the UK.
- Overseas woodturning organisations

To keep all of this information as up to date as possible I need your co-operation. Membership details should go to Derek, but please let me know of changes to the Commissions, Tuition and demonstrator lists and would Branch Secretaries let me know of changes to branches.

Mike Dennis

Please note my new
e-mail address

michaeldennis07@aol.com



Unfortunately, due to pressure of work, I feel unable to devote the time to editing '*Revolutions*' that it deserves.

I have thoroughly enjoyed my time as editor, albeit a fairly short one, but I have had to be honest about the amount of time that I can allocate to the task whilst still running my business. As much as would have liked to continue, I recognise that it is always going to be a struggle to find the time to meet the deadlines. The editorship falls into the capable hands of Mike Dennis now and I am sure that you will give him the support you gave me. Hopefully, I will remain on the Executive Committee but in a role less demanding of my time. I thank you all for your encouragement and support.

Bill Care

Let's hear it for the Association

John Witham

Having had the good fortune to gain a scholarship to this year's AWGB seminar at Loughborough University, I have returned home with new vigour and enthusiasm to improve my standard and to try and emulate the staggering display of exhibits on view.

As a hobbyist and active member of two AWGB affiliated clubs, I had always regarded membership of the AWGB as just another expenditure. I wasn't happy paying money to what I perceived to be a distant and faceless hierarchy that ran the woodturning fraternity. How wrong could I have been? On my arrival to the seminar I immediately experienced a genuine warm welcome from the

university staff and a marvelous camaraderie from the committee and all the delegates which grew stronger throughout the weekend.

I was very impressed with the general organisation of the event, making every minute count, and with the excellent programme and maps provided. Added to all this was the wonderful array of both national and international demonstrators who were always approachable and ready to chat and give advice, even when encroaching their own tea breaks.

The committee worked tirelessly throughout the weekend ensuring the

smooth running of the seminar, not to mention the excellent banquet and fund-raising event.

I would like to take this opportunity to thank the committee for awarding a scholarship to Master Gareth Holt, a student of the North Warwickshire and Hinckley college and member of the college club. Gareth has received a brand-new Axminster lathe, a chuck and a fine set of Sorby woodturning tools. Needless to say I no longer begrudge my subscription and feel confident enough to assert that with the AWGB in charge, British woodturning is in safe and capable hands. Just try and keep me away from the next seminar!

Commissions, Tuition and Demonstrator lists

Mike Dennis

We are updating all of our information databases and these lists form a vital part of them. To ensure that we have the very latest information on these lists we are asking members who offer any of these services to fill in the forms that came with this newsletter and send them back to Mike Dennis, 72 Hawes Close, Northwood, Middlesex HA6 1EW by March 31st at the latest.

What do we do with this information?

The lists are given to each affiliated branch and are also published on the website.

Commissions list

Is likely to be used by affiliated branches for enquiries they may receive about turners who accept commissions, usually locally. It is on the web site for any member of the public to find a turner if they need one.

Tuition list

Provides a handy reference for affiliated branches should any of their members require tuition. It is also on the web site for the public to see. We will also be inserting this information in the

member's handbook.

Demonstrator list

Affiliated branches use this list to choose whom they want as their demonstrator when compiling their annual programmes. It is also on the web site for use by other woodturning groups.

As you will see from the form we are also asking this time round for members to indicate if they are members of the Register of Professional Turners. Those members who are registered will have RPT inserted after their names. There is a short article about the Register of Professional Turners on Page 16. For further information visit the RPT website at www.rpturners.co.uk

Demonstrations

The committee has received complaints from branches about the quality of some demonstrations. These complaints range from excessive talk about things other than woodturning, to unintelligible comment or mumbling so that the audience has a job to hear. The AWGB is to introduce a feedback form for all branches to complete on each of its

demonstrations. The details have not yet been worked out but we hope this will have a two-fold effect in helping all demonstrators to improve the quality of their presentations and to help branches choose their demonstrators with a little more knowledge.

The lists we keep and circulate are of information about our members but we know that there are many companies who give talks and factory tours to woodturning clubs. If you are aware of or belong to such a company please let Mike Dennis have the details so that they can be included.

Please send the form back as soon as possible, even if you are already on the lists. If you do not, you will not be included on the lists. Once we have these forms back we will rely on you to let us know of any change in circumstances

Beginners projects - Weed pots

Brian Partridge

My last project encouraged beginners to try their hand at simple copy turning so what is the plot this time? Well in my many travels around our local branches including the two I personally belong to, I often hear beginners say, "I could never do anything like that". So how do the experts get to be so good? The simple answer is, by lots of practice, watching how others do things and being prepared to tackle anything without being to afraid that it will go wrong.

This little project aims at helping the beginner to get plenty of practice without it costing too much and without having to worry about failure.

Weed pots do not need to be large, they

The final masterpiece. Another experimental shape for me.



A group of little weed pots made with different woods and with different shapes.

are uncomplicated, with very little cost you can experiment with a number of techniques.

- Finishing – Go through the grits up to 400 or 600 but take care not to generate too much heat or you may get heat cracks. You cannot easily sand out badly torn grain but little tool ridges will go easily. **You cannot polish out a bad finish.** There are a number of products available such as Friction Polish, Wax polish, and Melamine. You might also like to try the various oils available such as Walnut oil, Danish oil, Finishing oil, and Corn oil. This project will enable you to try these out and see which type of finish you prefer. If you are lucky enough to belong to one of our branches then other members might help with small amounts of these finishes before you spend too much on ones you are not happy with
- Design- you can also start to experiment with shapes. When you have mastered the basic techniques there is nothing more satisfying than to sketch out a shape that appeals to you and then see it come to life in a piece of wood.
- Tool use – In making these little pots you will get lots of practice at using the tools and achieving good tool control. Remember tools should cut easily and not be forced through the wood however some woods are easier to turn than others, Yew with lots of curly grain can prove difficult as no matter which way you cut you may at some point be against the grain. One word of warning without sharp tools you may be wasting your time so **keep those tools sharp.**
- As an additional bonus you could end up with some very acceptable presents for friends and relations.

So what do we need for this?

- Wood - 50mm squares or branches of any woods you have around.
- Tools – Roughing gouge, Parting tool and 10mm spindle gouge.
- Chuck – A four jaw chuck, if you have not got round to this yet a screw chuck may be used but be careful to have a coarse screw and make it fit very tightly as you will be going into end grain.
- Finishing – Grits up to 600, sanding sealer and any good wax.



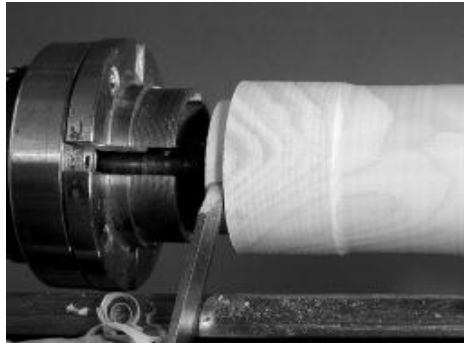
1. Typical woods to use for this project.



2. Try to imagine the shape in the wooden blank and mark centres which will make best use.



3. Mount the yew branch between centres and start to rough out taking care not to get bits of bark in your face.



4. With a parting tool, cut a spigot to fit in the chuck (in this case with parallel microgroove jaws).



5. Mount in the chuck and using the roughing gouge start to get a rough shape, it may be worth drawing a little sketch of the shape.



6. Using a Jacobs chuck drill a suitable sized hole down the pot.



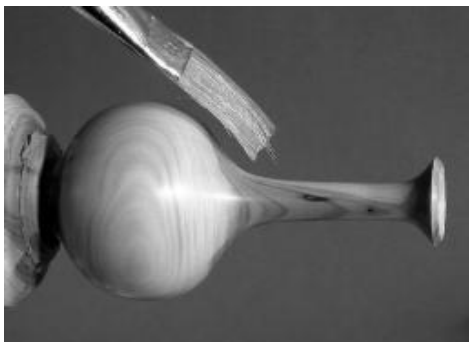
7. Putting a nice curve on the inside of the neck.



8. Refining the shape with the 10mm spindle gouge.



9. If the shape has been cut nicely sand with 180 grit up to 600 grit to get a nice finish.



10 Apply a good coat of sanding sealer (thinned 50% with thinners) making sure that it sinks in, then wipe it all off using kitchen roll. When dry give a final skim with 600 grit.



11. Apply a good wax polish but make sure that it is only a thin coating evenly spread then polish with kitchen roll.



12. Finally part off making sure that the bottom is concave and not convex.



The Worshipful Company of Turners

400th Anniversary competitions

These Competitions will be held at the Apothecaries' Hall, Blackfriars Lane,
London, EC4 (near Blackfriars Underground Station)
on Monday 14th June 2004

A reminder to members that these competitions are open to all members
of the Association. Are you planning or making your piece yet?

The competitions are:-

OPEN TO ALL TURNERS

MASTER'S COMPETITION in honour of Liveryman Theo Fabergé for a Turned Egg

A First Prize of £1500 and a certificate shall be awarded for the winning entry, a Prize of £1250 and a certificate shall be awarded for the second best entry and a Prize of £1000 and a certificate shall be awarded for the third best entry. If the quality of entries is outstanding a Prize of £500 and a certificate may also be awarded for the fourth best entry. The prize-winning entries shall be retained by the Company.

FELIX LEVY COMPETITION for freestyle turning

A trophy, to be retained by the winner, a prize of £500 and a certificate shall be awarded for the winning entry.

OPEN SET PIECE COMPETITION - A set of four lidded wood boxes with a connecting theme

A First Prize of £200 and a certificate shall be awarded for the winning entry, a Second Prize of £150 and a certificate shall be awarded for the second best entry and a Prize of £100 and a certificate shall be awarded for the third best entry. In the event that the quality of entries is outstanding a Prize of £50 and a certificate may also be awarded for the fourth best entry. The prize-winning entries shall be retained by the Company.

A.W.G.B. MEMBERS ONLY

PLAIN TURNING COMPETITION – SENIOR

The prizes will be a Gold Medal and £200, a Silver Medal and £150, a Bronze Medal and £100 and 3 prizes of £50 each for runners up. Certificates of the Worshipful Company of Turners will be awarded to all winners. The cash prizes are donated by the A.W.G.B.

PLAIN TURNING COMPETITION – JUNIOR (Note: restricted to members aged 18 years and under)

The prizes will be a Silver Medal and £125, a Bronze Medal and £75 and two prizes of £50 each for runners up. Certificates of the Worshipful Company of Turners will be awarded to all winners. The cash prizes are donated by the A.W.G.B.

Competition rules and entry forms were posted to all members last September, if you have lost yours or you are a new member please contact Mike Dennis.

Entry forms must be returned to the Clerk of the Company by 15th May 2004.

For members wishing to view the competition the doors open at 1.45 pm, with the prize giving at about 3.00pm and packing up from about 4.30pm.

Reception of entries for the Turners Competition on 14th June 2004

The following options are available for competitors to get their work to
Apothecaries Hall, Blackfriars Lane, London EC4V 6EJ:

- There will be a member of the Company at Apothecaries Hall on Sunday, 12 June between 11am to 3pm. This will avoid any congestion charges.
- The Hall will be manned from 10 am till 11.30 am on Monday, 13 June.
- Reception Centres. The people listed below have agreed to receive pieces and take them to the Hall. It is essential that they are telephoned or e-mailed first to arrange a convenient time for handover:

Nick Edwards, Kirklea, Park Road, Melchbourne, Beds, MK44 1BB.
Tel: 01234 709592 Email: nsedwards@QinetiQ.com

Malcolm Cobb, Thie Ne Shee, Moor Close Lane, Over Kellet, Carnforth, Lancs, LA6 1DF.
Tel: 01524 735882 Email: malcolm.cobb@virgin.net

Peter Ellis, Willow Tree cottage, Lower Wokingham Road, Crowthorne, Berks, RG11 6BT.
Tel: 01344 762332 Email: lynette_ellis_uk@yahoo.co.uk

Ray Key, The Firs, 53 Weston Road, Bretforton, Evesham, Worcs, WR11 7HW.
Tel: 01386 830142 Email: ray.key@talk21.com

John Edwards, Holly House, 16 The Ridgeway, Tonbridge, Kent, TN10 4NH.
Tel: 01732 355479 Email: johnf.edwards@virgin.net

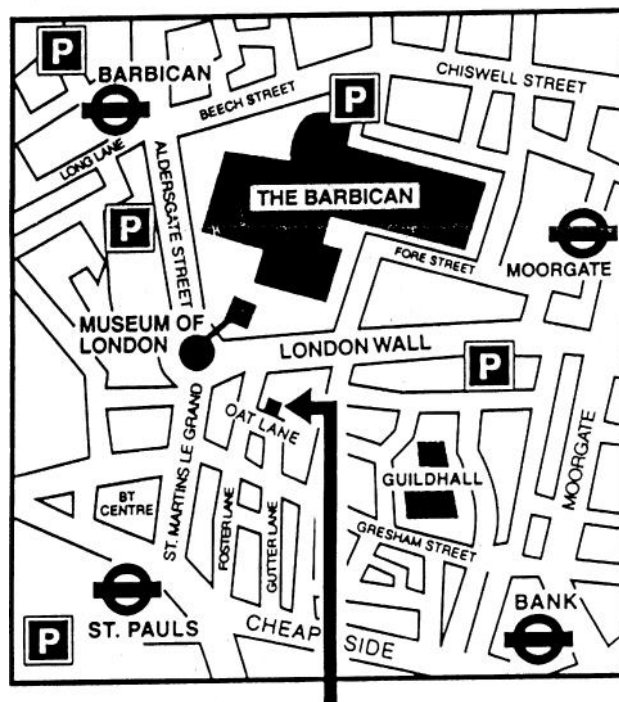
Worshipful Company of Turners, 182 Temple Chambers, Temple Avenue, London EC4 0HP
Tel +44(0)20 7353 9595 Fax +44(0)20 7353 9933

400th Anniversary exhibition

PROGRAMME OF EVENTS

- | | |
|---------|---|
| 14 June | BUILD-UP DAY
(N.B. The Turners Competition will be taking place at Apothecaries' Hall) |
| 15 June | 12.00 - 13.00 PRESS VIEW
13.00 - 16.00 PRESENTATION DAY
Prizewinners, Register of Turners, invited buyers and viewers plus Turners Company |
| 16 June | 11.00-16.00 PRESENTATION DAY
Register of Turners, invited buyers and viewers plus Turners Company |
| 17 June | 11.00-16.00 OPEN DAY
Schools, colleges, invited public and general public |
| 18 June | 11.00 - 16.00 Clear up, if necessary
A map of the immediate area surrounding Pewterers' Hall is shown opposite. As it is in the congestion charge zone, the telephone number to pay the charge by credit card (0845 900 1234) if you need to come by car. |

The above is a provisional programme as the final details have not yet been confirmed. More details in the next Rewvolutions. In the meantime members who may wish to visit the exhibition are advised to email the Clerk to the Worshipful Company of Turners at clerk@turnersco.com who will email a copy of information as becomes available.



PEWTERERS HALL

Our native trees - Oak

Guy Ravine

To start off what will hopefully be a series on British woods, where should one start? It has to be with Oak. Historically and emotionally this wood has played a huge part in our development. "Hearts of Oak", the "Wooden Walls of England" and "From tiny acorns do mighty Oaks grow" are all phrases that still resound. Oaks are landmarks for individuals and communities. The longevity of Oak is also remarkable, the tree can live for 600 plus years, and it will still be thriving centuries after most trees have rotted and crumbled to dust. If you consider that a thousand year old Oak may only be 7 generations away from the ice age, you can be drawn into another way of looking at your surroundings. As soon as humans started hewing trees for building purposes they would have found that Oak was excellent for construction. It is durable even when part buried in damp conditions, it doesn't even need to be dried before use. Even in recent times buildings have been erected in mediaeval style with Green Oak; that is, fresh cut Oak. The one that I am most familiar with is the Courtyard Hall at Sulgrave Manor in Northamptonshire, there are others. Oak splits and warps a bit as it dries but not sufficiently to seriously distort a building. Usually! The famous twisted spire of St. at Chesterfield is the exception that proves the rule!

A mature Oak is a magnificent sight. The branches can spread for 150-ft [45m] with the maximum height being slightly more than that, though a height of 100ft [30m] is far more common. Oaks provide an excellent habitat for birds, squirrels and a huge range of insects and spiders. A large Oak can house up to 250 different species, and that's not counting literally hundreds of lichens and fungi that can grow on the bark. These slow growing giants have wide root systems and are good at resisting riverbank and hillside erosion.

Ancient and Champion Oaks.

The largest Oaks in Britain, and possibly Europe, are at Fredville in Kent, (known as "Majesty"), Bowthorpe in Lincolnshire, These are both Q. Robur. The Fredville Oak is still tall and

stately though hollow. The Bowthorpe Oak is squat but it's vast hollow trunk is said to be large enough to accommodate 20 diners around a table, and has been used as a stable. The largest Sessile Oak is at Croft castle in Herefordshire. Some of the most remarkable Oaks in Britain are at Windsor Great Park, known as the "Dodders", these ancient pollards are a stirring sight. The prime specimen is known as the "Conqueror's Oak". These trees even get a mention in Shakespeare, in "The Merry Wives of Windsor". A 1000 year old Oak in Savernake forest was in the news recently. The tree known as "Big Belly" is in danger of splitting in half and is to be held together with a metal corset. Legend has it that if you dance naked 12 times round the tree at midnight the Devil will appear; it isn't clear whether the dance involved is a waltz, tango or twist!

Perhaps the appeal and appearance of these ancient trees is best summed up by these lines from the Rev. Francis Kilvert

".....those grey, gnarled, low browed,
Knock-kneed, bent, huge, strange,
long armed,
Deformed, hunchbacked, misshapen
That stand awaiting and watching
Century after century
Biding God's time
With both feet in the grave
And yet
Tiring down and seeing
Generation after generation. "

In the majority of the British Isles oak will come to dominate woodland if it is left to its own devices. It is probably wrong to imagine great swathes of virgin forest in this country, as woodland has been managed more or less intensively since Neolithic times. Many species were coppiced or pollarded in order to maximise the production of useful timber, and this often has the effect of extending the life of the tree beyond its normal length.

Bog Oak.

Many ancient oaks survive as "Bog Oak". Around 5000 years ago many areas of Oak forest were inundated by water and the trees died and fell. Whether it was ingress of salt water or a

rise in the water table that killed them is not entirely clear, but the same thing happened at similar times in areas such as the Fens, Sedgemore, and Romney marsh and many parts of Ireland. Many of them still lie where they fell, now buried deep underground. They come to light when raised by ploughs or exposed by road building, drainage schemes etc. Sometimes the wood is as hard and nearly as black as ebony, sometimes as soft as — soft. If the wood was rotten 5000 years ago the intervening centuries won't have improved it much! The dark colour is taken on from the surrounding peat I love to turn Bog oak with its homely peaty smell; it can be a problem finding solid sections of any size, but it is worth the effort. One of the most effective uses of Bog oak that I have seen is in the drawing room in Haver Castle in Kent, where it is used as an inlay in conjunction with Holly. I once turned forty 2" diameter drawer knobs in Bog Oak for a kitchen made entirely of this wood. If you would like to walk on Bog Oak, you can. There is a layer of it under the beach at Pett Level near Hastings, some of which is always exposed. North Hingham Timber of Norwich are the only regular suppliers of Bog Oak that I know of.

I have been speaking of oak as if it were a single species. It is not. Even "English Oak" can be one of several species; Quercus Robur (Pedunculate Oak), or Quercus Petraea (Sessile or Durmast Oak) being the most common. How do you tell the difference? Q. Robur is more likely to grow straight and its acorns have long stalks, or peduncles, hence its alternative name. Sessile oak is more scarce, is smaller, usually more contorted in its growth pattern, and its acorns have very short stalks There are numerous other Oaks world-wide, many of which have found their way here as specimen, park or ornamental trees. Those most often encountered are Turkey Oak (Q. Cerris), which is quite difficult to distinguish from native Oaks, and Holm or evergreen Oak (Q. Ilex), which isn't, on account of it being evergreen. It is important for a timber buyer to be able to recognise Turkey Oak as it is worth much less than Native Oak. The wood is useful but not in the



Old Oak tree in Hatfield Forest, Essex

same league as native oak, the easiest way to tell the difference is that Turkey Oak has acorn cups that are “hairy”. As a species Oak grows from western USA and Canada across Europe and North Africa through Asia Minor as far as Japan. There are 400 true Oaks world-wide and more than a hundred hybrids.

Brown Oak

There is natural variation in the colouration of Oak, although it is usually a pale straw to light brown colour. “Brown Oak” is however a distinct category in that the rich reddish brown colour has an external natural cause. This is the “Beefsteak” fungus (*Fistulina Hepatica*) which looks like half of a dinner plate sticking out of the side of the tree. The fungus is edible but I have never found any in good enough condition to eat. Eventually the fungus will kill the tree and the heartwood will rot away, but if the tree is cut at the right time the wood is little affected in terms of strength, but has attained a beautiful colour.

Uses

In the past Oak was used for any purpose where strength and durability were required, and there was much more of it around than there is now. Oak was used less for bowls, plates, cups etc. than other species, probably because of its propensity to split and discolour (due to the reaction of tannin with water and metal). It was extensively used for barrels and stave construction in general (buckets etc.) (It still is; many wines and spirits are matured in Oak barrels to take advantage of the tannic flavour that it imparts. Less scrupulous wine producers simply immerse Oak shavings in the wine for a “quick tannin fix”). It lends itself to this purpose because the ease of splitting can be put to good use, and because of its impermeability and

durability. Turned bowls were found in the Coppergate excavations at Jorvik (Viking York) but are scarce in comparison to other species. An Oak bowl with some natural edge dating back some 2500 years has been found in a bog in Ireland: it was probably a Celtic ceremonial vessel. Oak indeed played a part in Celtic religion, there being sacred trees and

groves of trees (such as that on Anglesey). Druids apparently carried an acorn to stop them ageing! The majority of surviving Mediaeval, Tudor and Stuart furniture is Oak, much of it has now attained a rich dark colour, the patina of age. Only in the 18th century was it supplanted by other woods such as Walnut and Mahogany which are easier to work and were probably easier to obtain as the oak stocks were under tremendous pressure for naval use.

Quarter sawn Oak with its prominent medullary rays has always been popular for tabletops and panelling. In addition to being beautiful, it is also very stable [in comparison to crown cut timber]. It is a good wood for garden furniture and structures and lasts well with little maintenance.

Oak has always been a valuable wood for shipbuilding because of its strength, impermeability, and durability. The warships of the Napoleonic period consumed vast amounts of Oak. Tanning of leather was formerly carried out with Oak bark, and a lot of small coastal Oak forests were almost wiped out by the demand for this industry.

Drying

Oak does not dry very well; it is prone to splitting and warping, causing in a lot of wastage. This results in top quality furniture grade wood being expensive, up to £50 per cubic foot, even more for quarter sawn. Lesser grades are much cheaper, and can be used for fencing etc. Kiln drying oak is a skilled task. Thicker planks do not kiln well, and even thinner planks are prone to “honeycombing” if the process is carried out carelessly. This results in voids inside the planks, which are not always visible from the outside.

The Sapwood is not attractive and is often too soft to work; in air-dried stock it is likely to be wormy. The worms do not attack the heartwood.

Turning characteristics

Oak is rather a coarse timber, which limits its use for fine turning. One would normally expect to use sanding sealer before applying a final polish. It is an excellent timber for medium to large projects such as Table lamps, candlesticks, small tools and tables etc. It is used a lot for turned furniture components, such as chair and table legs.

Oak makes excellent bowls, particularly if the spectacular quarter sawn figure is present; although the coarse end-grain can cause problems. It is not normally a suitable wood for salad or fruit bowls because of its tendency to stain. If the staining is not perceived as a problem, the wood has all the attributes of a good wood for bowls.

Oak is an excellent wood for wet turning, particularly if it is burry, when it is much easier to work wet than it is dry. One can also retain the contrast between heart and sapwood when the wood is wet; when dry the sapwood is usually too crumbly to be of any use. Be sure to turn it thin, it will certainly split if you don't.

If you want to use dry Oak a lot, and don't want to buy kiln dried: it is a good idea to invest in a moisture meter, as it is otherwise very difficult to judge whether it is dry or not. It is very unforgiving if you do make a mistake. This is particularly important if there is any burr figure, as the resulting distortion can be an unpleasant surprise.

Some of the best Oak I have had for turning has come from very old buildings, beams and spars that have rotted at the ends and had to be replaced. Oak hardens and darkens as it ages and old Oak has a quality of its own, and one feels drawn into history when working it. I was once approached to work some Oak taken from Roman wharves in London. It was recognisably Oak, but bluish because of being buried in damp soil for centuries. *Quercus Londinium* it was to be called! Unfortunately the job did not materialise, a cause of great regret.

© Guy Ravine 2003

Winners at Stoneleigh



Jack Mavin - winner of the Young Woodturners Competition with winning goblet.



Dennis Keeling with AWGB Visitors' Choice Trophy

The Jimmy Clewes experience

Dennis Fisher

I never travel north without feelings of nostalgia, the first time was in early 1950 when so many of us were yanked from the bosom of home to serve King and Country. This time as of recent years I was travelling by car in those earlier days it was by steam out of Kings Cross, along with hundreds of others . As I progressed north those names implanted years ago as we chugged through stations that served them rolled by Cambridge, Peterborough, Grantham, Doncaster, Selby, York, Darlington to hear that name I can still hear the guard announcing Darlington, Darlington change for Richmond, and Catterick, Ah what days they were, Stop !! . Yes before I start reminiscing to much, let me explain.

Back in April I attended the A.W.G.B. A.G.M. up in Birmingham as the Chelmer Valley club representative. As in lots of cases if you keep your eyes and ears open , when attending this type of meeting you nearly always gain more than you put in, anyway I found out that just by filling in the application form at the back of the members handbook you would be considered for a course with a suitable registered turner of your choice, I must reiterate here that it does not take into account any previous experience, you can be young or old (I was born in 1932) you can be a beginner wanting a sample, you can be Intermediate (I class myself in this category 3 years down the line), you can be expert wishing to learn fresh ideas techniques ect. Anyway the scheme is open to all this I cannot stress enough.



So here I was heading up the A1(M) for county Durham specifically for a hamlet called Hunwick just north of Bishop-Auckland and the workshop of Jimmy Clewes, you may ask why travel all that way (I live in Essex) but having seen Jimmy demonstrate at Ipswich some two years ago, I had been impressed by his approach and his enthusiasm for the craft and his explanation of techniques, be it tooling, texturing or colouring, I chose Jimmy for those reasons above, I wished to perfect some of my tooling, or learn a different way of doing it. I wanted to learn colouring a la Jimmy without hiding the grain and the figuring of the medium we work with, so my mind was set.

I saw Jimmy again at Loughborough (a Christmas present from my wife) and once again I was totally impressed with his work (along with all the other presenters I must say) at this stage I had not received any reply from the A.W.G.B. development committee who vet the all applications for scholarships, and it was not until the middle of October when I received a phone call from Tony Witham to be informed that my application had been successful and that I could go ahead and plan for two whole days with Jimmy.

I think it was the following day, that I phoned Jimmy to start making my plans the phone was answered by his wife, from hearonin called Jan (I hope she

wont mind) she informed me that Jimmy had just left for America and would be back in three and a half weeks time, having explained the reason for the call she said she would forward the brochure, giving description of courses provided and accommodation in the area, all I could do now was to sit back and wait, but time seems to slip by too quickly these days and three and a half weeks was gone and I was back on the phone. Yes he would be delighted to have me on a course and after some discussion I was slotted in with another student for the 18-19 of November.

Jimmy only takes a maximum of two students at a time, so student Instructor relationship is ever present, I had also explained on this phone call what it was I wished to gain from this two days, it was pointed out that all the courses are tailored to the students requirements and level of expertise which was just what I wanted.

Having fixed time and dates, I then booked myself into a Hotel all the information in the brochure supplied by Jan and I sat back waiting for the day to arrive. I headed up on Monday 17th a five and half hour journey for me and settled myself in to the hotel also in time to orientate myself with the local geography. Jimmy is about 10miles north west of Bishop Auckland at Hunwick where you can hardly get further into the sticks. Anyway Tuesday morning duly arrived and I presented myself at Jimmy's workshop.

At the 9am start time after initial introductions, which included Bruce a fellow student from Scotland, we were shown round the workshop. Jimmy's is suitable heated (I cannot work in the cold) it had three lathes a Wiva Mac, a Poolewood and a Vicmarc all top of the range which would grace anyones workshop. Apart from those pre-requisite machines, there was a bandsaw, drill press, and a variety of other woodturning machines all suitable placed around the workshop including a good solid workbench. Each lathe had its own work station with all the tools required for your use readily displayed (hung up by each station) beside those essential tools of the craft (art not being my argument) there was also safety equipment goggles, masks, masks with filters, and a Microclean air filter by each station. On my initial conversation

with Jimmy I had expressed the wish to have my platter technique refined, finishing up with colouring the rim. Secondly having purchased a Hamlet deep hollowing tool at Alley Pally sometime previously I really wanted to bring it into use (you know, see one and its 'I cant do without it' syndrome), anyway those were my plans for the next two days .

We, my fellow student and I and Jimmy were by now chatting about all things related to turning, its a wonderful therapy, and I think on our second coffee/tea and time was slipping by, so away we went .

I was put to initially to start the shaping of a platter, Jimmy had been up to his Aladdins Cave above the workshop and selected a 12in blank of sycamore , having made a couple of the initial passes across the base with Jimmy in close attendance, he said I have done it again. I give all my best wood away, I had uncovered a beautiful ripple running across the grain, and it was a delight to work, the base was going to be that long flowing Ogee shape. I thought I had achieved the best resulting shape but no, Jimmy was there pointing out if I was to soften here and make it longer there the shape would come to life. We carried on through until it was lunchtime. We had discussed size of base in relationship to the shape of object, and on reversing the size of the rim, (remembering that it was to be coloured) and again rim size in relationship to what we wanted to keep on clear display , the grain, figuring and shape ect. There are many things to keep in mind, its not just putting steel to wood. Then it was lunch time.

Jan, Jimmys wife provides a three course lunch for all students and it was spot on, a good well balanced meal was provided plus delightful conversation throughout, you were really made to feel at home. At this stage of life after a 3 course lunch I normally feel an armchair coming on but no, it was back to the workshop for more shavings. Prior to lunch I had completed the platter upto and including the rim shape this was some 2 ¾ inch with a gentle curve slopping down towards the centre of the platter. During the cutting and shaping Jimmy would occasionally peer over your shoulder and make

suggestions or stop you and guide your hands into a better tooling position to achieve a better finish but you never felt it was too intrusive, to me the mark of a good instructor.

Rim finished and before taking out the centre of the platter it was time to play with colour, I have never been one to hide the figuring of the medium in which we work with colour, but as was explained during the following process the delights of the figure and grain would be allowed to shine through, so out came the spirit stain royal blue, green, yellow , and light blue. I was shown how to apply, blend and fill in to create an iridescence colour to highlight the above. Having felt my way around this strange technique, Jimmy and I were eventually happy with the result, I was then allowed to cut out the centre of the platter. Up to this phase in my experience I had used abrasive down to 400 in my finishing. All Change !! with Jimmys guiding hand I was using grades down to 1200 in the wet and in dry mode. I had previously thought my finish was good, now I realised what a finish was, it is often said time spent finishing a product exceeds time spent shaping, that definitely was in this case, the base and centre were given an oil finish with the rim coloured and topped with Acrylic spray, time now was 1700 hours and it had been a wonderful days learning experience, and I was tired so it was farewell until the morning.

I duly arrived at 09.00 hour suitably refreshed after a good nights sleep, coffee and tea on arrival, the best way to start the day, and of course get questions answered on the previous days work, and discuss todays project, today I wanted to hollow with relative ease down to 9 or 10 inches, and create a nice shaped vase.

Once again a suitable piece of wood was provided, a Silver Birch log 12x6. Mounted between centres, I set to work roughing down leaving enough material for a natural rim and create a spigot for a chuck mounting, this was duly achieved and mounted in the chuck. I was then set the task of creating the shape from the rim down the first 2 ½ inches of the vase, not forgetting the rim was to be natural, again this was

Continued overleaf

completed, I was set to work taking out the first inch or so from the inside and finalising the natural edge. No! the bark did not stay on, but I did get my natural edge and vessel thickness down to about 5mm with no white knuckles, now for the hollowing process, I was taught how to sharpen, set up and alter the angle if required and all the nuances of the Hamlet deep hollowing tool. I suppose the same applies to all DHT's, anyway into the wood we went, and it was not long before I was feeling quiet comfortable, progress is not quick when under instruction. As you go down into the hollowing process about an inch at a time, each section is finished, yes down to 1200 grit. Again the day progressed interspersed by tea/coffee and of course lunch. I thought Christmas had come early with the spread, an excellent meal thanks again to Jan. No armchair, its back to a finish, the outside was to follow the inside shape, yes I did get that 5mm thickness after Jimmy showed me how much wood I had left, a nice ball bead at the bottom of the vase and a flared foot. Oh yes!! what diameter foot do you put on that sort of object ?? this was discussed at length and a set formula arrived at. This is the sort of information you can expertly pass on when you are talking to club members with confidence.

And so my course came to a conclusion, yes my vase was finished with oil. In conclusion I had received two days of superb instruction on those things that I had set out to achieve, the two days were tailored to my requirements and I have no doubt that from beginners to experts they would receive the same degree of attention. Jimmy's courses are a thoroughly enjoyable experience. My sincere thanks to both Jimmy and Jan. And thank you to the A.W.G.B. for providing the finance for me to have fun learning so much in such a short time, some of which I hope I shall be able to pass on to fellow members at our local club.

Application forms are in the back of the A.W.G.B. members handbook.
Go get em you turners.

Middlesex Woodturners seminar

Gordon Cookson

Here are some notes on Tobias Kaye's views of turning, with some applying to life in general, followed by some hints on techniques. (I am grateful to Tobias for his many comments clarifying my first rough draft. G.C.)

Tobias started the session with "Don't be afraid to do it. Try it! Develop artistic and design skills by looking for the finished shape as real potential inside the wood blank. Make the bowl or whatever and then hold it up, and compare it with the original idea. How are they different? Why are they different? This is not self-criticism, but a chance to compare the idea with reality. Notice how features of the wood changed the plan. Note the slow and erratic increase in your tool and design skills".

During the day, Tobias expounded his ideas on excellence versus perfection in traditional wood turning as follows. Strive for excellence, but imperfection is part of the human condition. Perfection can be boring. Setting standards on perfection will not produce a thing of joy. It is also tiring to try to achieve. Accuracy is the death of beauty. Making things identical is the death of the soul because there is a lack of interest in the development of ideas. A set of baluster spindles that subtly develop one to the next (a difficult task) would be more appealing to the eye than a set of perfect copies (an even more difficult task!). Similarity between the components of a set should be like the leaves on a tree, but given that we do not want too much disparity, remember to copy the first item every time.

What you make reflects how you are feeling at the time. Care and compassion are reflected in the beauty of the finished piece. The teacher and innovative craftsman David Pye said "Anything you make will either sing where it stands, or be forever

silent". How does the piece make you feel, and what pleasure does it bring? If the curve you produce really flows, then the flow will carry it beyond the rim of the bowl. The wood stops, but the curve goes on. Unconsciously, people see a bigger shape than the bowl itself. This gives a piece "presence".

Tobias provided many hints on techniques as he worked on his demonstration pieces. When drilling a depth hole with a gouge, make a dimple first. Any round ground gouge will do provided it is ground evenly. It will get hot, so tap out the shavings frequently. When rough turning a bowl, turn the base thinner than the walls to reduce the chances of splitting. Practice a flowing cut for the desired shape with every cut. It produces a much better end result. The tool path inside a bowl should be arched, finishing at the centre. The cut will be cleaner and there will be less vibration "Cut wood as it likes to be cut" wrote Frank Pain in his seminal book 'The Practical Woodturner'. Swing the tool handle. Many catches in the bottoms of bowls are caused by not swinging the tool handle. When hollowing into end grain, a spindle



Tobias in good humour

gouge may be used, starting in the centre and pulling the gouge outwards with the flute pointing to 11 o'clock. If using a ring tool on end grain, cut between 7 and 8 o'clock on the ring, not at 6 o'clock, which causes vicious catches. The line of the cut follows 8 o'clock on the wood.

The profile of the cutting edge is almost as important as its sharpness. If you can see a bright line along a cutting edge, then it is blunt! Bowl gouges work best if ground without 'swing'. The cutting edge should be straight, so that it meets a flat surface all round if presented to it. Spindle gouges should be swing ground. The more pointed they are, the better they get into detail, but the more round they are, the better they cope with fuller curves. Straight parting tools cut with less binding than diamond section parting tools, but remember to wiggle them to increase the width of cut. Scrapers are used at higher spindle speeds than are gouges etc. Scrapers should always trail at the cutting edge to avoid a dig-in, and shear scraping at 45 degrees should be done by drawing the scraper along the tool rest with the handle forwards. As an aside, Tobias mentioned that the black stain on the skin commonly experienced when turning damp temperate woods, especially oak, is caused by the reaction of tannic acid in the wood with the steel tools. It can be removed by rubbing with lemon juice.

On finishing, Tobias believes that the finish should glow, rather than shine. The glow is in the wood, from its own lustre, while a shine is on the surface, in the polish.

Laurence Llewellyn Bowen, in his TV Design Rules, says a matt finish will scatter light, but a gloss finish will reflect it. Accordingly, Tobias favours an oil finish. Liberon Finishing Oil is quick and easy to use. Danish oil is slower, but gives a darker, deeper glow. Linseed oil can be used, but it takes two weeks to dry, while liquid paraffin from the chemist never dries completely. Salad bowls must use a food safe finish, and may use paraffin oil, sesame oil or walnut oil. (Editor's note: Beware, nut oils can cause allergic reactions. There are specialist safe finishes available for food bowls) Any fine oil on green timber reduces the chances of splitting.



All delegates are encouraged to bring a piece of work for the 'Instant Gallery'

The main demonstration piece for the day was Tobias' "Doughnut Bowl". This was made from a specially selected 12" x 4" blank of 'crown cut' ash. This cut is taken from near the outside of the trunk, and has the end grain almost parallel to the face of the blank. It is used the Opposite way around compared with normal bowl turning. This results in interesting oval grain patterns showing on the rim of the finished bowl. Any coarse grained wood, such as oak, elm and sweet chestnut will show the effect. The doughnut bowl in section has a continuously curved surface, the inside surface running continuously into the outside surface. The shape can be seen on the Whiteboard in the photograph. It is made up of a series of ellipses. It is a difficult shape to get right, requiring several differently ground bowl gouges to enable the inside to be cut. The gouge needs to swing when making the undercut. A 42 degrees grind starts the inside, and moves through to a 60 degree grind to complete the cut.

The doughnut bowl took up most of the time available, but there was time for Tobias to make several small end grain bowls from Sumach wood about three inches in diameter. Sumach is best turned semi-dry. It is a rare wood which can cause allergic reactions. Although he did not make it, Tobias outlined a neat turned wooden egg, which opened up to reveal two feet that pushed into holes in the halves of the egg to make two egg cups. Handy for picnics! A 10" long piece of wood should be enough. The thickness of the ends of the egg, which become the bases of each egg cup, should be 8mm to avoid splitting when used as an egg cup. Sand the inside of each egg shape before turning the outside. Once the feet are made, insert

each into the inside of a half egg, jam chuck them both, and finish off the projecting ends of the feet flush with the egg. Beeswax will increase the friction of the jam chuck fit.

Footnotes.

a) I believe that the following quotations from Bernard Leach's famous work 'A Potters Handbook' pages 13 - 24 apply to wood turning and relate well to Tobias' ideas: "There can be no fullness or complete realisation of utility without beauty, refinement and charm for the simple reason that their absence must in the long run be intolerable for both user and consumer". "Does its character give pleasure to both the eye and to the touch?". "Curves are for beauty, angles for strength". "You may turn fifty bowls on the same model, which only vary but a fraction of an inch, and yet only perhaps six of them will have that right relationship of parts which gives vitality". "Does any decoration add to the total effect or not? it must be good in itself and freely executed, but it must combine with and improve the form and harmonise with the natural variations of both colour and texture of the body and finish". "Does the foot have the right width, depth, angle, undercut, bevels, and general feeling to carry the term above it?" "A small foot for grace; a broad one for stability".

b) For further thoughts on excellence versus perfectionism see Tobias' article in Traditional Woodworking June 2002.

c) For details of Tobias' courses and videos, telephone 01364 642 837.

The Register of Professional Turners

The Register is composed of turners who offer a professional service to the public, and whose work, prior to admission, has been approved by competent assessors as being of good quality.

Turners who are accepted on the Register are awarded a certificate, and may use the letters RPT (Registered Professional Turner) after their names, on business cards letterheads etc. They are entitled to use the Register logo, and may also refer to being on the Register of Professional Turners supported by the Worshipful Company of Turners of London. The Company has the right to withdraw these privileges at its discretion.

In general terms, the PURPOSES of the Register may be described as follows:

1. To encourage the appreciation by the general public of good quality turning,
2. To assure prospective purchasers of turned work that high standards of design, execution and finish will be obtained from craftsmen and craftswomen who are members of the Register,
3. To promote co-operation and companionship among professional turners,
4. To hold seminars for discussion of subjects of common interest,
5. To encourage the proper teaching of the craft of turning.

There are four main criteria governing eligibility for inclusion on the Register.

The Register is open to individual craftsmen and craftswomen, whose work, in any material, is created using some form of lathe,

- a. who earn a substantial part of their living from this work,
- b. most of whose work is intended to be judged on aesthetic as well as functional grounds,
- c. who have demonstrated to an Assessor that they have a personal commitment to high standards of design, execution and finish.

However, none of the Company, the Register, nor any of their respective officers, shall have any liability for any form of professional or personal misconduct by persons who are on the Register, although reports of any such misconduct will be investigated, whenever practicable.

A fully searchable list of the the professional turners on the register is now available on the internet with postal addresses, telephone and fax numbers, e-mail addresses etc. and an indication of the type of work they do.

Most of the Members are "general turners" – that is, they can tackle almost all types of turning, usually in wood, and including faceplate and spindle work although many have specialities.

Turners who believe that they fulfil the criteria of eligibility and have, ideally, been in business for two years, may ask the Membership Secretary, Gregory Moreton, by letter or email for an application form. Arrangements will then be made for them to be assessed for competence and dedication to the craft, preferably in their workshop.

In addition, the form should be endorsed by, ideally, another member of the Register, who is, in effect, acting as a character reference.

The Register regards the proper and safe teaching of the craft as an important activity. It has published, a Code of Practice, covering the teaching of novices, which suggests how a student might reasonably expect to be treated in a course of instruction.

It must be pointed out that Members are not assessed by the Register with regard to their teaching abilities, so that neither the Register, nor the Worshipful Company of Turners, can give an assurance that every course offered would be satisfactory for every student, for whatever reason. A small, but increasing number of the tutors hold City & Guilds teaching qualifications.

In order to ensure that standards are maintained, the Register has prepared a questionnaire to be given to students at the completion of a course, so that they may comment, in confidence, on any matter to do with their instruction that they regard as important. This scheme started in October 1997, and there have been very few adverse views expressed! If any serious dissatisfaction arose, it would be investigated and, hopefully, resolved.



For Sale

Poolewood 28/40 lathe, long bed,
with extension bars for outboard
turning. Up to 14in over bed,
25in diameter outboard.
Comes with solid wooden bench,
buyer collects from near
Ipswich, Suffolk.
£ 550 o.n.o. L. Crawford
01473 780 177 or E-mail
lcrawford@totalonline.net

The Association of Woodturners of Great Britain

ANNUAL GENERAL MEETING

BRAUNSTON VILLAGE HALL, BRAUNSTON, NORTHAMPTON

(By courtesy of The Tudor Rose Woodturners)

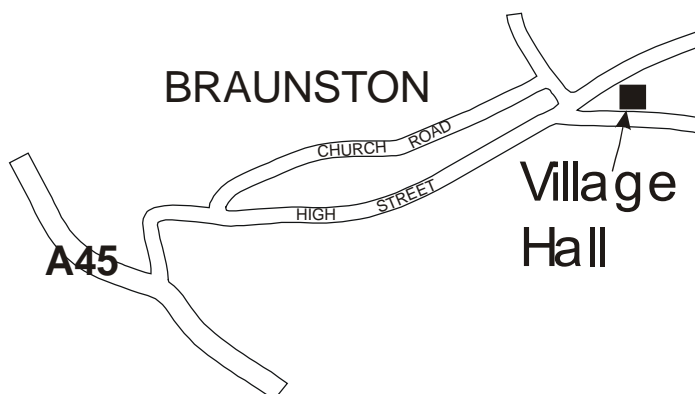
On Sunday March 28th 2004 commencing at 2.00pm prompt.

AGENDA

- 1 Apologies for absence
- 2 Minutes of the AGM held Water Orton Primary School,
Vicarage Lane, Water Orton, Birmingham - Sunday 6th April 2003.
- 3 Honorary Chairman's report.
- 4 Honorary Treasurer's report and subscription recommendation for 2005.
- 5 Changes to the Constitution
Results of the Postal Ballot
- 7 Election of Officers
There will be no postal voting for officers this year as only one person per executive post has been proposed. Members will be elected as follows:
Chairman - Tony Witham
Vice chairman – No Nomination
Treasurer - Mike Morley
Secretary - Lionel Pringle
- 6 Election of One Executive Committee Member.
There being only one nomination Tony Walton is duly elected.
- 7 Election of two Regional Representatives to the Executive Committee.
As only one nomination for each region was received
Brian Partridge is elected as regional representative for the Eastern Region and
Ray Tunstall is elected as Regional representative for the Western Region
- 8 Discussion.

NB Only fully paid up members of the Association of Woodturners of Great Britain are entitled to attend the Annual General Meeting.

Junction 17 M1



The Way Forward

Mike Dennis

The following is a resume of the slide presentation given to branches during January and February. The proposals that follow affect the branch structure of the AWGB and does not affect individual members as such.

This article is to explain how the Executive committee proposes to move the AWGB forward. Before we outline the proposals it might be helpful to look at the benefits of membership as they are today.

Our Aims

Let us first consider four of our aims that is the driving force behind these proposals:-

- To act as the body representative for the interest of Turners Nationally and Internationally.
- To act as the National Body to advise and communicate with Publications and other parts of the Media to foster a greater public awareness of the Turners' Art and Craft.
- To communicate with Government and similar Bodies relevant to the Arts and Crafts movements.
- To encourage the formation of local area Woodturning Branches by providing suitable assistance and financial help.

Benefits for the Individual

For the individual, whether they be a member of a branch or not, the following are some of the benefits they get as a member of the AWGB:-

- Fellowship, support and advice.
- Network of Affiliated Branches.
- Display of members work at Exhibitions.
- A quarterly newsletter.
- A 3 day biennial International Seminar.
- Members workshop insurance scheme.
- Members discount scheme.
- A successful Internet web site.
- Members Development Programme.
- Membership sponsorship to deserving applicants.
- A loan a lathe scheme.
- Course and Seminar scholarships.
- A members handbook updated annually.

- Advertising members who give Tuition, accept Commissions or give Demonstrations.
- A comprehensive video library & slide portfolios of selected work from the seminars.

Additional benefits for those who belong to a branch

For those members who belong to a branch they get the following benefits:-

- Face to face contact with other woodturners on a regular basis.
- Opportunity to watch amateur and professional turners demonstrate their particular skills.
- The opportunity to learn through hands-on sessions organised by branches.
- Learn through branch critiques and competitions.
- Many branches buy and sell consumables at reduced prices.

Affiliated branch benefits

Branches who are affiliated to the AWGB get the following benefits:-

- Insurance cover for all Branch activities.
- Rebate on subscriptions collected by the branch.
- A grant towards the cost of a demonstrator.
- Regular updates on information relating to woodturning.
- Loan of display equipment for exhibitions.
- Supply of advertising material.
- An Internet Web Site advertising branch events.
- Regional representation on the AWGB Executive Committee.

Present Position of AWGB

Currently the Executive committee consists of 14 members.

- 6 members are elected by the membership.
- 4 Regional representatives are elected by the Affiliated Branches.

- 4 members are co-opted into special roles - these include.
- A President, Newsletter editor, The Web Master and the Insurance and Health & Safety officer.
- The Executive Committee meets 4 times a year.

What does the Executive Committee do?

The Executive Committee is responsible to the members for managing the daily administration of the Association.

- This is achieved through daily communication between committee members via e-mail.
- Mounts the displays of members work at National Exhibitions.
- Maintains liaison with other Woodturning Organisations.
- Organises and mounts the biennial seminar.
- Maintains the following information on a daily basis.
- The membership database.
- The list of Affiliated branches.
- The list of members who give Demonstrations.
- The list of members who give Tuition.
- The list of members who accept Commissions.
- Progress of the Development Programme.
- The list of Non Affiliated branches.
- Financial transactions.
- Attends to communications from the members or branches.
- Attending meetings with other woodturning organisations as required.
- Edits and arranges the printing and distribution of Revolutions.
- Updating the Web Site as required.

Achievements in 2003

Listed below are some of the achievements that were made in 2003

2003 Seminar

- BEST YET – judged by the response from members.
- BEST RAFFLE – the most prizes on offer and the most amount of money ever taken.

- **BEST AUCTION** – the most amount of money ever raised towards the development programme.
- **BEST INSTANT GALLERY** – with the new display equipment this was the most prestigious show of woodturning we have ever mounted and included the Tony Boase Tribute Exhibition.
- **FIRST TIME AWARD** of the Tony Boase Tribute Trophy.

Members Development Programme

- 6 Members awarded sponsored membership.
- 6 Members awarded woodturning courses with some of our professional members.
- 4 Members awarded a seminar scholarship.

Exhibitions

The AWGB had a stand at the following exhibitions during the year:-

- The International Woodworking Exhibition at Alexandra Palace.
- The Woodworking Exhibition at Thame.
- International Woodturning and Woodworking Exhibition at Stoneleigh.
- Tools 2003 Exhibition at Exeter.
- At each of these exhibitions the AWGB organised an independent woodturning advice clinic
- At the Stoneleigh exhibition the AWGB awarded two plaques for the Public's Choice in the Enthusiast and Prestige classes of the woodturning competitions. Both of these trophies were won by AWGB members
- At Tools 2003 in Exeter we were pleased to have won the Frank Clarke Memorial Award for the Best Feature Stand at the exhibition

Members Discount Scheme

- Our Trade liaison Officer continues to attract new companies willing to offer discounts to our members
- A typical example of this is Yandles who are offering members a 10% discount on wood sales – normally this service is only available to customers for a fee of £10 per year.

Other achievements in the form of new member services include:-

- The AWGB has supported the Tony Boase Tribute scholarship fundraising both financially and in its administration
- The 2004 calendar in full colour sent to every member.
- The production of CD's with Instant Gallery pictures from the seminar

Planning for 2004

As well as the proposals being put forward here, already planned is:-

- Displays of members work at the major woodworking exhibitions.
- Involvement with the 400th anniversary celebrations of the Worshipful Company of Turners.
- Display of selected work from the 2003 seminar.
- AWGB funded prizes for competitions for our members as well as medals from the Worshipful Company.
- Provision of a funding grant for a Teenage Turners Training Day.
- Colour pages in Revolutions.
- Special 'One-off' Project Grants.
- Increased Demonstrator Grants.
- More flexible approach to awarding Demonstrator Grants.
- Administration of the Tony Boase Scholarship Fund.
- Centralising all data.
- Increased communication with Branches.

Present Position of AWGB

Today there are approximately 2800 members and of these approximately 2200 belong to an affiliated branch. There are currently 43 Affiliated Branches.

We need to extend the scope of the organisation

To fulfil the aims stated at the beginning of this article we need to introduce some changes.

We recognise that there are many woodturners who are outside our ambit. There are approximately 70 woodturning clubs who are not part of the AWGB.

These are known to have 150+ members in the larger clubs to small informal groups.

We have and maintain informal links with many of these clubs and the Northern Federation of Woodturning Clubs.

Restrictions

Under the terms of our current constitution a lot of these clubs, which have AWGB members, cannot affiliate

unless all of their members agree to join the AWGB.

We need to reach all woodturners

The Executive Committee believes that the interests of woodturning and woodturners would be well served by strengthening the links between the AWGB and these non-affiliated groups

How can we achieve this?

The Executive Committee has been struggling with this question for a number of years and we think we have a solution and the time is right to implement it

THE PROPOSAL

The Executive Committee proposes a new class of Club Membership - "Associated Club"

Benefits for an Associated Club

For an annual fee the 'Associated Club' would receive the following:-

- An insurance package that will meet the needs of the club and capable of extension for an additional fee.
- The club would receive one copy of Revolutions to be sent to the Secretary.
- Publicity for the club on our Web Site and at Exhibitions attended by the AWGB.
- Access to the information in the Members Development Programme.

Procedure for Change

Admission of Associated Clubs would mean a change to our constitution. Such changes can only be adopted at an Annual or Extraordinary General Meeting following a postal vote.

The Executive Committee have held consultations with the Branches and the proposal is contained with this issue of Revolutions.

The result of the postal vote will be announced at the Annual General Meeting on March 28th 2004

Once approval is given offers can then be made to non-affiliated groups to become Associated Clubs

Revised draft Constitution of The Association of Woodturners of Great Britain

THE AIMS

1. To foster a greater awareness, Nationally and Internationally, of the Woodturners (Turners) Art and Craft.
2. To provide a forum to encourage communication and an exchange of views amongst Woodturners of all Nations.
3. To make Collectors, Galleries, Architects, Suppliers and Manufacturers of Turners' Equipment and other interested parties aware of the Turners' work and Turners' needs.
4. To encourage and participate in the development of Training Standards and Educational Facilities for Turning.
5. To act as the body representative for the interest of Turners Nationally and Internationally.
6. To provide a Members' Newsletter at regular intervals on relevant news.
7. To arrange National and International Seminars and Exhibitions that encourage all to aim for, and achieve high quality turnery.
8. To act as the National Body to advise and communicate with Publications and other parts of the Media to foster a greater public awareness of the Turners' Art and Craft.
9. To communicate with Government and similar Bodies relevant to the Arts and Crafts movements.
10. To encourage the formation of local area Woodturning Branches by providing suitable assistance and financial help.

THE CONSTITUTION

MEMBERSHIP RULES

1. Membership shall be open to anyone on payment of an annual subscription. There shall only be six classes of membership of 'The Association of Woodturners of Great Britain' (otherwise titled 'the AWGB'). The classes shall be Full, Family (Member, Partner and family under the age of 16), Junior Member, Overseas, Corporate and Honorary.
2. Honorary membership either for a fixed term or for life shall be granted at the discretion of the Executive Committee.

3. All paid up members shall have the opportunity of entering into all the activities of the Association, to attend Annual and Extraordinary General Meetings, to vote upon constitutional and other matters and to be nominated for election to serve on the Executive Committee of the Association.
4. Membership entails the acceptance of responsibility for maintaining the good name of the Association at all times and an interest in furthering the aims of the Association.
5. Members shall be entitled to use the Name of the Association and such entitlement shall cease upon cessation of membership of the Association. No member shall be entitled to use the AWGB logo for any purpose.
6. Resignations from the Association shall be given by notice in writing after fulfilling all obligations to it. Defaulting on annual fee following one reminder shall also constitute resignation.
7. Resignations from the Association shall be interpreted at all times as resignation from any Affiliated Branch concerned.

BRANCH RULES

1. Any Woodturning Group may become an Affiliated Branch by constitutionally requiring that all its Members shall be Members of the AWGB
2. All Affiliated Branches shall incorporate into their Constitution the clause "Branch rules as laid down from time to time by the Executive Committee of the AWGB shall apply in full to this Branch of the AWGB".
3. All affiliated Branches will be entitled to use the AWGB logo in their publicity.
4. Each Affiliated Branch will be allocated to a region determined by the Executive Committee of the AWGB.
5. Affiliated Branches will elect four members, one from each region, to serve on the Executive Committee for a period of two years. Two of these

members will retire by rotation each year.

6. For the two regions whose turn it is to vote the Executive Committee will invite each Affiliated Branch within each region to nominate one of its members to stand for Regional Representative to the Executive Committee. The nomination can be by ballot of all its members or a nomination by the branch committee.
7. Each affiliated Branch shall send The nominations will be sent to the Branch Co-ordinator the name of their nominated candidate 13 weeks prior to the Annual General Meeting. All Affiliated Branches, within a region shall then be invited by means of a postal ballot, which will list all nominated candidates from that region, to vote for a Regional Representative, for that region, to serve on the Executive Committee.
8. Ballot papers must be returned to the Branch Co-ordinator at least one week prior to the Annual General Meeting. The results of the ballot will be announced at the Annual General Meeting
9. Each Affiliated Branch shall be invited to send a representative to an Annual Branch Meeting to be held at an appropriate time and to be chaired by a member of the Executive Committee
10. Affiliated Branches may choose to collect a combined annual subscription to cover both the Branch and AWGB subscriptions. Branches choosing to undertake this shall receive an AWGB discount to be set annually through the AGM, per membership per full year

ASSOCIATED CLUBS

1. Other woodturning groups, not having 100% AWBG membership, may become associated to the AWGB by paying a fee to be set by the Executive Committee.
2. Associated clubs will be entitled to use the AWGB logo in their publicity
3. The AWGB will provide the same insurance package to Associated Clubs as to Affiliated Clubs.

4. The AWGB will include all Associated Clubs in all of its publicity and on its internet web site.
5. Associated Clubs will receive one copy of Revolutions at each issue and will receive other communications sent to Affiliated branches at the discretion of the EC.

MANAGEMENT OF THE ASSOCIATION AND THE EXECUTIVE COMMITTEE

1. The affairs of The Association shall be managed by an Executive Committee.
2. The Executive Committee shall include Four Officers being an Honorary Chairman, Vice Chairman, an Honorary Secretary and an Honorary Treasurer plus six members.
3. The Chairman shall be elected annually by the Members of the Association through the Annual General Meeting. No one shall serve in this position for more than four years.
4. The Vice Chairman shall be elected by the Members of The Association through the Annual General Meeting for a period of Two Years. This position will normally be considered to be the Chairman elect.
5. The Honorary Secretary and the Honorary Treasurer shall each be elected annually by the Members of The Association through the Annual General Meeting for a one year term of office and shall be eligible for re-election for additional terms.
6. Four of the six members of the Executive Committee shall be appointed under the procedures set out in "BRANCH RULES" for a period of two years. Two of these Members shall retire each year and shall be eligible for re-election for additional terms.
7. Two of the Six Members of the Executive Committee shall be elected by the Members of the Association through the Annual General Meeting for a period of two years. One of these Members shall retire by rotation each year and shall be eligible for re-election.
8. The Executive Committee shall have the power to co-opt AWGB Members from outside its number to undertake specific tasks or duties for a period deemed necessary.
9. The Executive Committee shall meet at intervals determined by the

business of The Association, but not less than three times a year.

- Meetings shall be convened by the Hon. Secretary in consultation with the Chairman although a meeting shall be convened at any time on the demand of three or more Executive Committee members.
10. The Chairman shall exercise a casting vote if any voting at an Executive Committee meeting shall otherwise be equal.
11. If the Chairman or Vice Chairman of The Association be not present at a meeting then the Executive Committee shall elect their own Chairman from among their number for that meeting.
12. A Quorum of the Executive Committee shall be five Members to include two officers.
13. Executive Committee members who do not attend committee meetings on three consecutive occasions shall, at the discretion of the Executive Committee, be deemed to have retired from the Executive Committee.
14. The Executive Committee shall have the power to appoint sub-committees to act on its behalf. The Chairman of each sub-committee shall be a member or a co-opted member of the Executive Committee.
15. The Executive Committee shall have the power to hold and maintain such Bank Accounts, Building Society Accounts and other Savings Accounts as are deemed necessary for the business of The Association. All such accounts shall be in the name of the Association.
16. Cheques of The Association shall only be drawn on the signature's of the Hon. Treasurer and one other from two nominated Executive Committee Members.
17. The Hon. Treasurer shall arrange for annual accounts to be put to the Annual General Meeting and such accounts shall be prepared by a suitably qualified professional person but not being a member of the AWGB.
18. The Executive Committee shall have the power to appoint from outside its number an Executive President to be re-appointed annually.

MEETINGS OF THE ASSOCIATION

1. An Annual General Meeting shall be called as soon as practical but in any

event within four months, after the close of The Association's financial year on the last day of December.

2. The ordinary business to be transacted at each Annual General Meeting shall be:
 - a. To receive and adopt the Executive Committee Chairman's report.
 - b. To receive and adopt the Hon. Treasurer's report and annual accounts covering the financial affairs of the previous year.
 - c. To receive the results of the Postal Ballot for the election of the Officers and other Members of the Executive Committee for the following year.
 - d. To receive the results of the Postal Ballot of any Motion put by the Hon. Treasurer for any variation in the annual subscriptions.
 - e. To receive the results of the Postal Ballot of any Motions properly put to the Membership through the rules of the AGM.
 - f. Any other business that the Executive Committee see fit.
3. An Extraordinary General Meeting may be called by a resolution of the Executive Committee or on the receipt by the Honorary Secretary of the written request of at least 25 members of The Association. The rules for the holding and conduct of the Annual General Meeting otherwise apply.
4. Only fully paid up members of The Association shall be entitled to attend and vote through the Annual General Meeting. Members attending shall be required to produce their AWGB membership cards or other acceptable means of identification.
5. Notice of the Time and Date and Place of the Annual General Meeting shall be notified to members ten weeks before the date of the Meeting. The notice shall call for nominations and motions to be submitted to the Hon. Secretary within two weeks.
6. Motions and Proposals for the Annual General Meeting must be submitted in writing to the Hon. Secretary by whatever reasonable date is specified by the Executive Committee. This shall be not less than eight weeks before the date of the meeting. Proposals for motions must be signed by the Proposer and a Secunder both of whom must be members of the AWGB.
7. Nominations for the Executive

Committee shall be submitted in writing to the Hon. Secretary by whatever reasonable date is specified by the Executive Committee. Nominations must be signed by the Nominee and a Seconder both of whom must be members of the AWGB. A 100 word statement written by the nominee explaining why he/she is standing for the Committee must accompany all nominations.

8. All Members entitled to attend the Annual General Meeting, whether they attend the meeting or not, shall be invited to vote by means of a Postal Ballot and on all Nominations for the Committee and all Proposals and Motions put to the Meeting.
9. Ballot papers shall be circulated with the Annual General Meeting Agenda and must be returned to the Hon. Secretary by no later than one week before the date of the Annual General Meeting.
10. Nominations, Proposals and Motions put to the Annual General Meeting shall be carried by a simple majority of Postal Ballot votes cast except where material change to the Constitution is proposed.
11. The Constitution of the AWGB may be changed through a motion put to a Members General Meeting. Such motions shall be put through a postal ballot. Any motion considered by the Executive Committee to call for a material change in the Constitution shall require a majority of at least two thirds of the votes cast in order to be carried.

THE DISSOLUTION OF THE AWGB

1. If the Executive Committee shall decide that The Association shall be dissolved then the Executive Committee shall by the issue of a notice to all Members of the Association arrange for all debts, liabilities, taxes and other dues to be paid in full. The assets shall be sold, and any funds remaining shall be paid in equal shares to all paid up members at that time.

Two new Branches

Due to a good response from the appeals in the last two issues of *Revolutions* Richard Webb has been successful in setting up a new branch in Herefordshire

They are to be known as the **Forest of Dean Woodturners**

They meet at Toolite Ltd, Micheldean, Gloucester on the third Wednesday of each month at 7.30pm

For more information contact the Secretary

Richard Webb

Mima

Lea

Nr. Ross-on-Wye HR8 7LH

Tel: 01989 750703

email: richardwebb@bigfoot.com

Over the water in Guernsey we have another new branch.

They are to be known as **Sania Woodturners**

They meet at St Sampsons Secondary School, Design and Technology Centre, St Sampsons.

The days they meet vary to fit in with the school timetable.

They have not yet elected a Secretary until their AGM in late February.

For the moment all enquiries should be directed to their Chairman elect George Tulie, Claylands, Plaisance Road, St Peter. Guernsey GY7 9AA

*Remember
to post off
your Ballot
Paper*

*Have You
paid your
subscription
yet?*

*This will be the last
issue of **Revolutions**
you will receive if
you have not*

*Pepper
Mills*

Sole Distributor

of

**COLE &
MASON**

*Mechanisms
and parts*

**Constable
Woodcrafts**

*Tel/Fax : 01206 299400
email : brianfitzs@aol.com*

AWGB Branches

Amerton Woodturners

Secretary: Bill Fox, Stafford, Staffordshire
Telephone: 01785 248312
Meetings: 4th Monday each month (not Dec) 7.30pm
Venue: Hopton Village Hall, (near Stafford)

Avon & Bristol Woodturners

Secretary: Richard Avery, Lower Almondsbury, Bristol
Telephone: 01454 613969
E-Mail: messages@avon-and-bristol-woodturners.org.uk
Web Site: www.avon-and-bristol-woodturners.org.uk
Meetings: 3rd Thursday each month (not Dec) 7.30pm
Venue: The Huntsman Inn Westerleigh Road, Downend, Bristol

Axminster Woodturners Club

Secretary: Jo Rusling, Lyme Regis, Dorset
Telephone: 01297 552501 *E-Mail:* phinerjo@dircon.co.uk
Meetings: 1st Wednesday of each month Time: 7.00pm
Venue: Axminster Power Tool Centre, McNeil House, Chard Street, Axminster

Broadland Woodturners Society

Secretary: Wilfred Balls, Norwich, Norfolk
Telephone: 01603 434164
E-Mail: wilf@thorpe1974@fsnet.co.uk
Meetings: Last Thursday each month Time: 7.30pm
Venue: Bradwell Community Centre, Bradwell,

Burcot Woodturners Club

Secretary: John Smith, Birmingham, Worcs
Telephone: 01214 585884
E-Mail: info @burcotwoodturners.org.uk
Web Site: www.burcotwoodturners.org.uk
Meetings: 1st Thursday each month Time: 7.00pm
Venue: Burcot Village Hall,

Cambridge Woodturners

Secretary: Edmund Rose, Duxford, Cambs
Telephone: 01223 832605 (evenings)
Meetings: 1st Thursday each month Time: 7.30pm
Venue: Scout HQ, 195 Perne Road, (Near Sainsburys), Cambridge

Cheam Woodturners Association

Secretary: David Buskell, Surrey
Telephone: 020 8657 5565
E-Mail: davidbuskell@yahoo.com
Web Site: www.cheamturners.co.uk
Meetings: 3rd Wednesday each month Time: 7.30pm
Venue: North Cheam Sports & Social Club, 658 London Road, N. Cheam, Surrey

Chelmer Valley Woodturners

Secretary: Jim Hill, Chelmsford, Essex
Telephone: 01621 742468
Web Site: www.chelmerwood.co.uk
Meetings: 3rd Monday each month (Except BH's) 7.30pm
Venue: The Methodist Hall, Moulsham Lodge, Chelmsford, Essex.

Colchester Woodturners

Secretary: Martin Edgley, Colchester, Essex
Telephone: 01206 843562
Meetings: 1st Monday each month Time: 7.30pm
Venue: St Johns Church Hall, Ipswich Road, Highwoods, Colchester.

Coombe Abbey Woodturners

Secretary: Geoff Astin, Rugby, Warwickshire
Telephone: 01788 810431 *E-Mail:* grastin@tiscali.co.uk
Meetings: Every 6th Saturday afternoon Time: 1.30pm
Venue: Coombe Abbey Visitors Centre, Coome Abbey Country Park, Brinklow Road, Coventry

Cumbria Woodturners Association

Secretary: Fred Singleton, Kendal, Cumbria
Telephone: 01539 731896
E-Mail: turningcumbria@freeuk.com
Web Site: http://home.freeuk.com/turningcumbria
Meetings: 3rd Saturday each month Time: 10.00am
Venue: Burnside Village Hall

East Hertfordshire Woodturners

Secretary: John Leach, Bishop's Stortford, Herts
Telephone: 01279 657901
Meetings: 3rd Wednesday of each month
Venue: Various - Please phone/write for details

East Surrey Woodturners

Secretary: Gerry Neary, Selsdon, Surrey
Telephone: 0208 6514026
E-Mail: gerry.neary@blueyonder.co.uk
Web Site: www.eastsurreywoodturners.org
Meetings: Last Thursday each month Time: 7.30pm
Venue: The Edgecombe Centre, Monks Hill, Selsdon

Forest of Dean Woodturners

Secretary: Dick Webb, Ross-on-Wye, Hereford
Telephone: 01989 750703
E-Mail: richardwebb@bigfoot.com
Meetings: Third Wednesday each month Time: 7.30pm
Venue: Toolite Ltd, Micheldean, Gloucester

Furness Woodturning Association

Secretary: Ken Rowlinson, Ulveston, Cumbria
Telephone: 01229 584831
E-Mail: ken@rowlinson.freemove.co.uk
Meetings: 3rd Thursday each month Time: 7.00pm
Venue: Rampside Village Hall

Glamorgan Woodturners

Secretary: Keith Coles, Bridgend, Mid Glamorgan
Telephone: 01656 740357 *E-Mail:* Tywen@hotmail.com
Web Site: http://www.bridgendwoodturners.fsnet.co.uk/
Meetings: 2nd Monday each month Time: 6.30pm
Venue: Nolton Church Hall, Merthyr Mawr Road, Bridgend

Heart of England Woodturners

Secretary: Reg Reed, Welford on Avon, Warwick
Telephone: 01789 750221
Meetings: Every 6th Friday Time: 7.30pm
Venue: The Scout Hut, Tiddington, Stratford upon Avon, Warwickshire

Herts & Beds Woodturners

Secretary: Mike Sheaf, Luton, Bedfordshire
Telephone: 01582 736382
Meetings: 2nd Tuesday each month Time: 7.30pm
Venue: The Cork Room, Adey Fields Centre, Hemel Hempstead.

Kent Branch Woodturners

Secretary: Pat Gleadell, Gillingham, Kent
Telephone: 01634 304865 *E-Mail:* patgleadell@aol.com
Meetings: 1st Tues evening and 3rd Sat all day each month
Venue: The Brocade Suite, The Friars, Aylesford, Maidstone

Kings Lynn Woodturners

Secretary: Nigel Hellon, Kings Lynn, Norfolk
Telephone: 01553 762939(home) 01553 691215(work)
E-Mail: kingslynn.turners@bt.com
Meetings: 2nd Wednesday each month Time: 7.30pm
Venue: Clenchwarton Village Hall

Mid Staffs Woodturners Association

Secretary: John Smith, Rugeley, Staffordshire
Telephone: 01889 577380
E-Mail: johnrs1935@hotmail.com
Meetings: 1st Friday each month
Venue: The Village Hall, Etching Hill, Rugeley, Staffs.

Mid Wales Woodturners

Secretary: Joe Catley, Llandinam, Powys
Telephone: 01686 689191
E-Mail: j.p.catley@btopenworld.com
Meetings: Sunday afternoons, contact for details
Venue: Llandinam Village Hall

Middlesex Woodturners Association

Secretary: Adrian Needham, Datchet, Berkshire
Telephone: 01753 593771
E-Mail: ajneedham@e-brimbles.com
Web Site: www.harrop.co.uk/mwa
Meetings: 2nd Thursday each month Time: 7.30pm
Venue: The Gaelic Association Club House, West End Road, Northholt

Norfolk Woodturners Association

Secretary: Bernard Rose, Norwich, Norfolk
Telephone: 01603 436990
Meetings: 3rd Wednesday each month
Venue: Fakenham High School or Beetley Village Hall, Nr Dereham, Norfolk

North London Woodturners Group

Secretary: Jeremy Eckstein, London
Telephone: 020 8445 5528
E-Mail: jeckstein_assoc@compuserve.com
Meetings: 3rd Thursday each month
Venue: Varies - please phone/write for details

North Warwickshire & Hinkley College Woodturners

Secretary: Brian Gibbs, Atherstone, Warwick
Telephone: 01827 712053
E-Mail: gibbs@poppage.fsnet.co.uk
Meetings: 1st & 3rd Tuesday the month Time: 6.00pm
Venue: Hinkley College

Plymouth Woodturners

Secretary: Richard Smith, Plymouth, Devon
Telephone: 01752 778671
E-Mail: randbsmith@eurobell.co.uk
Meetings: 3rd Friday each month
Venue: Methodist Church Hall, Greenway Avenue, Woodford, Plymouth

Staffordshire & South Cheshire Woodturners

Secretary: Nigel Rickards, Stoke-on-Trent, Staffs
Telephone: 01270 882420 *E-Mail:* nigelann@lineone.net
Web Site: www.sscwoodturners.co.uk
Meetings: 2nd Thursday each month
Venue: Senior Citizens Centre, Hanover Street, Newcastle-U-Lyme

Strathclyde Woodturners

Secretary: Jim Pearson, Lenzie, Glasgow
Telephone: 01417 762798
E-Mail: jim@fluidpower.freemove.co.uk
Web Site: Jimhillnow@aol.com
Meetings: 1st Monday each month Time: 7.00pm
Venue: Jim Pearson's workshop

Suffolk Mid-Coastal Woodturners

Secretary: Andy Mapplebeck, Ipswich, Suffolk
Telephone: 01473 686320 *E-Mail:* scladen@aol.com
Meetings: 1st Thursday each month
Venue: Dallinghoo Village Hall, Nr Woodbridge,

Suffolk, Essex & Cambridge Borders Woodturners

Secretary: Brian Partridge, Hadleigh, Suffolk
Telephone: 01473 828489 *E-Mail:* brianpart@aol.com
Web Site: www.secb.co.uk
Meetings: 2nd Tuesday each month Time: 7.30pm
Venue: Peter Childs, The Old Hyde, Little Yeldham, Halstead, Essex

Taywood Woodturners

Secretary: Alan Copeland, Monifieth, Angus
E-Mail: ashbank.copland@btinternet.com
Meetings: 3rd Saturday each month
Venue: Various - write for details

Thameside Woodturners Association

Secretary: Peter Bone, Sothend-on-Sea, Essex
Telephone: 01702585548
E-Mail: peter.bone@blueyonder.co.uk
Web Site: http://members.aol.com/AHam287771
Meetings: 2nd Thursday each month
Venue: The Fold, Laindon Road, Billericay,

The Blackcountry Woodturners

Secretary: Nigel Groucutt, Walsall, West Midlands
Telephone: 01213 272833(Day) 01922 868300(home)
E-Mail: ngroucutt@cableinet.co.uk
Meetings: 3rd Wednesday each month Time: 6.00pm
Venue: Sandwell College, Crockets Lane, Smethick, West Midlands

The Tudor Rose Woodturners

Secretary: Malcolm Hill, Daventry, Northampton
Telephone: 01327 872982
E-Mail: malcval@hotmail.com
Web Site: www.tudor-rose-turners.org.uk
Meetings: 2nd Tuesday each month Time: 7.00pm
Venue: Braunston Memorial Hall

Village Turners

Secretary: John Taylor, Peterborough, Cambridge
Telephone: 01733 333010
E-Mail: secretary@villageturners.org.uk
Web Site: www.villageturners.org.uk
Venue: Please contact Secretary for details

Waveney & District Woodturners

Secretary: Ronnie Summons, Lowestoft, Suffolk
Telephone: 01502 584347
Meetings: 2nd Thursday each month Time: 7.30pm
Venue: Mutford Community Centre, Mill Road,

West Cumbria Woodturners

Secretary: Dave Grainger, Nr Penrith, Cumbria
Telephone: 01768 361744
E-Mail: woodinwest@care4free.net
Meetings: 3rd Saturday of each month
Venue: The Village Hall, Great Broughton, Cockermouth

West Midlands Woodturners

Secretary: Peter Hockley, Marston Green, Birmingham
Telephone: 01217 793220 *E-Mail:* peterhockley3@aol.com
Web Site: www.west-midlands-woodturners.co.uk
Meetings: Every 6 weeks
Venue: Water Orton Primary School., Vicarage Lane, Water Orton

West Suffolk Woodturning Club

Secretary: Richard Everett, Wetheringsett, Suffolk
Telephone: 01449 767799
Meetings: 3rd Tuesday each month Time: 7.30pm
Venue: Earl Stoneham Village Hall

Worcestershire Woodturners

Secretary: Kate Price, Kidderminster, Worcester
Telephone: 01562 741484
Meetings: 1st & 3rd Mondays each month
Venue: Droitwich High School, Briar Mill, Droitwich

Tips and tricks

If you have any tips or tricks that you would like to share with other members please send them to the editor. Meanwhile here are a couple to set the series off. *Mike Dennis*

Get a good grip

Jaws for scroll chucks are manufactured in the round and sawn into 4 as the last stage. The diameter of the manufactured size is the optimum size of spigot you need to ensure the best grip. This is more important when turning vases for instance where there is a longer overhang from the chuck.

Please see the following diagrams that explain the theory. Most jaw manufacturers can/do give the optimum diameter of each set of their jaws as shown opposite.

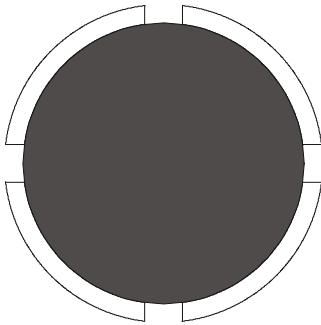
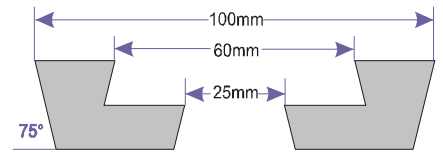


Diagram 1 - A spigot of 75mm fitted to jaws that were manufactured at 75mm. Good grip along the entire length of each segment. The optimum grip.

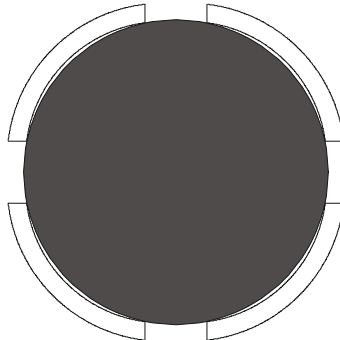


Diagram 2 - If the spigot is larger than 75mm the jaws will not grip in the centre of each segment. The only grip is at the edges of each segment

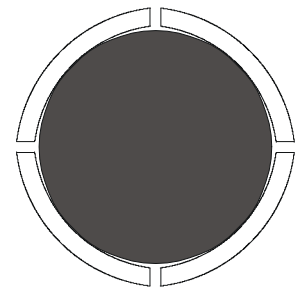


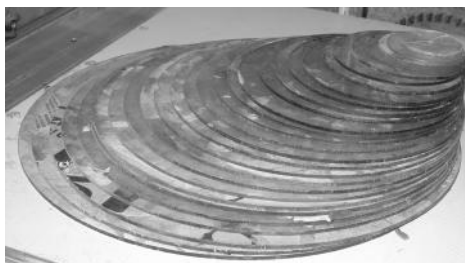
Diagram 3 - If the spigot is smaller than 75mm the grip is in the centre of each segment and no grip at the ends.

Perspex discs

Some years ago I cut up some perspex into round discs primarily for marking out boards to cut round blanks for bowls. Because they are transparent you can move them around to ensure you get the best grain configuration in your blank. Mark around the edge of the disc for your cutting mark and then move onto the next area. The smaller discs can be used for marking out small blanks in between the larger ones. My discs start at 2" and go up to 12" in $\frac{1}{2}$ " increments. I have found these discs to be very useful in other ways as shown below.



Using a disc to find the centre of a turning blank. Very useful for odd shaped blanks



The discs I have used for years. Some still have the protective paper on



Finding the centre of a square blank

Let there be light

Are you always able to get light where you need it?

My light is a clip-on type spotlight clipped to a batten that sits on the lathe bed bars. It is extremely useful especially for hollow form work as it very manoeuvrable



Some of the selected pieces from the 2003 Seminar



Ray Key - Set of three boxes 'Flavours of the Orient' - Assorted woods



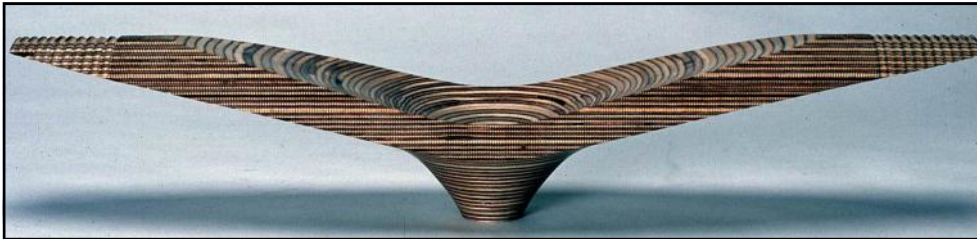
Christian Delhon - Spike Star - Box



John Edwards - Screw-top Box - Crocus Wood



Arthur Hickson - Lattice Vase - Cherry



Phil Irons - Ceremonial Bowl - Birch Ply

In the right place at the right time



Tony Walton, our Trade and Business Liaison Officer seen here substituting for Stuart Mortimer at the Stoneliagh exhibition.



*Gregory Moreton
Natural Top Bowl
Monkey Puzzle*



*Tobias Kaye
'The Kiss'
Ash*

Traders offering discounts to AWGB members

On production of a valid membership card.

L. H. Turtle,
10 Park Street, Croydon,
Surrey, CR0 1YE
Telephone: 0181 688 5513

10% on certain products

B. H. P. Woodcrafts,
Rainbows End,
Mayes Lane, Sandon,
Chelmsford, Essex CM2 7RW
Telephone: 01245 227229

10% - 15%
Depending on
what you buy

Peter Childs,
The Old Hyde, Little Yeldham,
Halstead, Essex CO9 4QT
Telephone: 01787 237291

5%

**Northern Craft &
Power Tool Co Ltd,**
214 Waterloo Road
Blackpool, Lancashire
FY4 3PP
Telephone: 01253 400066
Fax: 01253 400077

5% on Trend, Sorby,
Rexon, Craft Supplies
Accessories, Timber,
Liberon, Dremel,
35% Bosch Tools, Ryobi
Tools, Plus many others

Coeur Du Bois
35 Brunstock Beck,
Didcot, Oxfordshire
OX11 7YG
Tel: 01235 810658 Fax: 01235 810905 Mail Order only
E-Mail: phemsley@globalnet.co.uk
Web: www.woodworking.co.uk/toolpost/

30% on Burr Maple Blanks
15% on tools (Robert Sorby &
Henry Taylor) & finishes
(Chestnut & Liberon)

Angier & Frowde Ltd (Fixing Shop)

30 Chislehurst Road,
Orpington, Kent BR6 0DG
Telephone: 01689 822467
Fax: 01689 828092

10% on all items
in the shop

Craft Supplies,
The Mill, Millers Dale
Buxton, Derbyshire
Telephone: 01298 871636
Fax: 01298 872263
E-Mail: sales@craft-supplies.co.uk

£25 off your any
woodturning course.,
Send for an application
form from the
Membership Secretary

Springbok Crafts
The Stables, Morden Hall Park
Morden Hall Road, Morden
Surrey. SM4 5JD
Telephone: 0181 699 3518 (evenings)

10% of Microclene Air
Filters
Robot products
Multistar products

Reg Sherwin
The Woodturners Workshop,
Avoncroft Museum of
Historic Buildings,
Stoke Heath, Bromsgrove,
Worcestershire B60 4JR
Telephone: 01527 876800

10% off any of his courses
Reduced rates to any
affiliated branch that
books a demonstration.
One free demonstration to
any affiliated branch within a
50 mile radius of Bromsgrove

Roy Coe Woodturning
The Chestnuts
Justice Wood
Kersey Road
Polstead
Suffolk
CO6 5DH
Telephone 01787 211539

5% off any course, 10% off
wood and accessories
purchased during a course.
One free demonstration
to any affiliated branch
within 30 miles of Kersey.

Yandle & Sons Ltd
Hurst Works
Martock
Somerset TA12 6JU
Tel: 01935 822207

10% off Timber & finishes

Derby Woodturning centre
Wordsworth Avenue,
Sinfen,
Derby.
DE24 9HQ.
Tel: 01332 772481

10% off timber up to £50.
15% off timber over £50
5% off other products 5-7
10% off Microclean air filters

DGR Designs
388 Leymoor Road
Golcar
Huddersfield
West Yorkshire
HD7 4QF
Telephone: 01484 656111
e-mail dennis@dgrdesigns.co.uk
Web: www.dgrdesigns.co.uk

5% off inlay materials, dyes
beads, semiprecious gems,
Union Graduate lathe spares,
Jubilee lathe spares and
knobs or levers for Record
lathes.

Turning Point
(John & Sue Theobald)
'Tolcarne'
Trebarwith Road
Delabole
Cornwall
PL33 9DB
Telephone 01840 213558

10% off woodturning
courses)
(Residential &
non-residential
10% off Bed & Breakfast

Henry Taylor
Peacock Estate
Liversey Street
Sheffield
S6 2BL
Telephone: 01142 340282
E-mail: sales@henrytaylor tools.co.uk
Web: www.henrytaylor tools.co.uk

25% off turning, wood carving
and woodworking tools

Kendal Tools & Machinery
Unit 10
Lake District Park
Off Shap Road
Kendal, Cumbria
LA9 6LZ
Tel: 01539 733774

10% off all items,
other than goods already
discounted.

Turners Retreat
Brunel Industrial Estate
Harworth
Nottingham DN11 8QA
Tel 01302 744344

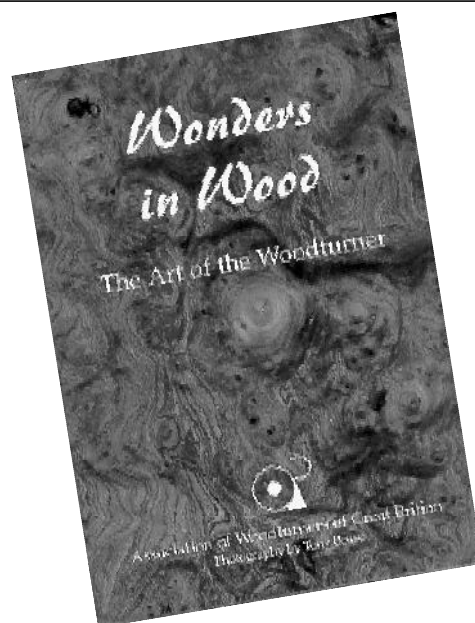
10% off wood,
Sorby turning tools and
finishes, and Liberon Products

Isaac Lord West end Court Suffield Road High Wycombe HP11 2JY Telephone: 01494 462121 E-mail: marketing@isaaclord.co.uk Web: www.isaacclord.com		10% off all woodturning accessories
Meantime Design LTD Unit 1 Willersey Business Park Broadway Worcestershire WR12 7PR		10% off at trade counter for craft and gift-making supplies for the woodturner including, clock parts, barometers, pen sets, thermometers, calenders and sandtimers.
G and S Timber Crafts The Alpaca Centre Snuff Mill Lane Stainton Penrith Cumbria CA11 0HA		10% off Timber for woodturners including air and kilne dried blanks, burrs, spalted beech, and yew branches.
Fred Woods (Turnstyler) 135 Strathfield Walk Merry Hill Wolverhampton West Midlands WV4 4YJ		10% off Turnstyler Lathes, and timber and burrs including many air died and kiln dried English species.
Crown Tools & Fixings Ltd Watermill House Restmor Way Hackbridge road Wallinton Surry SM6 7AH Bosch, Makita, Dewalt 35%		Draper hand tools 20% Draper Power 20% Stanley 15% Record hand tools 15% Power tools (Professional)
Sherlock Ltd (trading also as) Dure-Edge, Bandsaw blades 21 Station Road Woodley Stockport Cheshire SK6 1HN		Flexbackplus 10%
PowerTek (Watford) 20 Market street Watford RRP Herts WD1 7AD		Hand tools 12.5% off RRP Machinery up to 20% off RRP
J.A.Roberts (Tools) Ltd Unit 5-40 Kimpton road Kimpton link business centre Sutton Surrey SM3 9QP		hand tools power tools 15%
Keyvision Ltd Trading as Wood N Things 250-252 Derby road Stapleford Nottingham NG9 7BG		5% on all items in shop plus 10% off Courses
Stiles & Bates (courses) Upper Farm Church Hill Sutton Dover Kent CT15 5DF		Course discounts (none specified assume contact for details)

J&J Tools
14 Main Street
Willoughby
Rugby
Warwickshire CV23 8BH
5%

W.L. West & Sons Ltd
Selham
Pentworth
West Sussex
GU28 0PJ
10% on shop prices

Australian Outback Imports
Unit 4
Rolts Garden Center
Elmstead Market
Colchester
Essex CO7 7DD
10%



**Is your turning lacking
inspiration?**

You will find all you need in this book

You can order your book

Directly from David Grainger, Laurel Bank,
Kirby Thore, Nr Penrith. Cumbria CA10 1XN

Now only £5 plus p & p

Post and Packaging;

UK £2.00

EU £3.00

Rest of the world £5.00

Cheques with order made payable to the AWGB
for the full amount, including P&P, quoting your
membership number, name and address please.



Great Autumn Show **2004**

An important new date for all woodturning,
woodworking enthusiasts is the

1st - 3rd October 2004

NEW TIME - NEW VENUE - NEW FACES

This year we are moving the show to a better location - The Bakewell Agricultural Business Centre.

This is a modern venue with two purpose built auctioning rings which will convert to excellent demonstration rings with tiered seating & standing for in excess of 500 visitors. This excellent viewing will be supplemented by 3 large projection screens to be able to view the turners working in great detail.

In addition to excellent viewing of the 6 principal presenters there is a large concourse area where the rest of the exhibition can be visited all within easy reach. An additional demonstrator this year is a toy maker from Australia, Jim Sterling.

Our principal demonstrators this year will be:

Ray Key & Stuart Batty from the UK

Petter Herud from Norway

Emmet Kane from Ireland

Mike Mahoney from USA

Harry Memelink from NEW ZEALAND

Jamie Wallwin will be doing Hands On sessions with beginners and Mick Hanbury will be conducting a Turners Clinic to give advice to developing woodturners.

There is an excellent bar and restaurant within the Agricultural Centre.

The venue is only a 5 minute walk from the centre of Bakewell so is in easy reach for non-turning partners to visit the town.

Opening Times:

Friday 1.00 pm - 7.00 pm

Saturday 10.00 am - 5.30 pm

Sunday 10.00 am - 4.00 pm

Advance ticket sales will be £3.00 each and groups of 4 or more people will be £2.50 each

Ample parking beside the exhibition venue, unfortunately the parking costs are beyond our control, will cost up to £4 for the day so we recommend you fill up your cars or better still come in a coach - FREE parking for coaches (*please advise prior to the event if you are bringing a coach*)

Craft Supplies Ltd

The Mill, Millers Dale, Nr Buxton, Derbyshire SK17 8SN

Tel: (01298) 871636

Fax: (01298) 872263

E-Mail sales@craft-supplies.co.uk

www.craft-supplies.co.uk

Turnstyler for Timber

**Fresh Sawn - Air-dried & Kiln-dried in most English Timbers
A Good Selection of 'Exotics' in Bowl Blanks & Squares**

Our Sawmill is now in full production with a capacity to cut 1metre wide and 20 feet long in most English timbers. Oak Burrs and Oak slabs available for that 'special table top'.

**Beams supplied in Oak and other timbers for Barn conversions -
Fireplaces and Timber-framed buildings**

**Mail order service for 25-50 Kgs bags of blanks at very cheap rates
Possible free delivery dependent on quantity ordered**

Telephone 01902 763962 or 01746 710176

Revolutions Binders

Newly available - these binders have a smart dark green leathercloth binding. The spine is gold blocked with the AWGB logo and the newsletter title.

Each binder will hold 16 copies of Revolutions

Only £6 each inc. p & p

Order now from

John Wilson, 19 Chiswell Road,
Poole, Dorset, BH17 9FB

Cheques should be made payable to the AWGB

Place Binder
Image here

T & J Tools Advertisement as last issue

WOODTURNING COURSES IN KENT WITH DAVE REEKS

SET IN ONE OF THE MOST PICTURESQUE PARTS OF KENT

1-5 Day Courses.

Individual Tuition only 2 Pupils max.

From beginners to the more experienced.

Courses structured to suit individual needs.

In a friendly and fun loving environment.

Unbiased advice on lathe, tools and wood purchases.

VB36 & Apollo Professional lathes available

On the register of the
Worshipful Company of Turners.

Member of the
Association of Woodturners of Great Britain.

Good food and accommodation available at

Penang Lodge, Hassell St, Hastingleigh,

Nr Ashford, Kent TN25 5JE

Telephone: 01233 750316

DEMONSTRATIONS

Informative, good humoured, unbiased advice,
practical guidance on all aspects, years of
experience.

These are the ingredients of my demonstrations to
clubs and society's up and down the country

QUALITY IS NOT EXPENSIVE, IT'S PRICELESS!



The complete range of honed ready-to-use carving tools and full range of carbon and high speed steel turning tools are manufactured by time served craftsmen in our factory in Lincolnshire and are unconditionally guaranteed for life.

We undertake to regrind or rehone any tool returned to us, which we have manufactured, free of charge.

Any tool purchased from us that in any way gives dissatisfaction we will exchange.

Factory tours are available by appointment for groups of about fifteen people, so come and see 'How it's done'.

Send for our free mail order catalogue. 16 pages in colour.

Please enclose two first class stamps for return postage.

Ashley Iles
woodcarving & turning tools
made in the old tradition

Ashley Iles (Edge Tools) Ltd.,

East Kirkby, Spilsby, Lincolnshire PE23 4DD.

Tel: 01790 763372 Fax: 01790 763610

Email: sales@ashleyiles.co.uk Website: www.ashleyiles.co.uk

Many of the world's leading farmers own and rely upon the VMH. They value their reputations and endorse only those products in which they have genuine confidence. Here are some of their comments:

"I would not let my VMH go for anything. I have been using it for years and it has been a great help to me. I have been able to get a lot of work done in a short time. I have been able to get a lot of work done in a short time. I have been able to get a lot of work done in a short time."

"I have been using the VMH for years and it has been a great help to me. I have been able to get a lot of work done in a short time. I have been able to get a lot of work done in a short time. I have been able to get a lot of work done in a short time."

"I have been using the VMH for years and it has been a great help to me. I have been able to get a lot of work done in a short time. I have been able to get a lot of work done in a short time. I have been able to get a lot of work done in a short time."

"I have been using the VMH for years and it has been a great help to me. I have been able to get a lot of work done in a short time. I have been able to get a lot of work done in a short time. I have been able to get a lot of work done in a short time."

MAJOR FEATURES OF THE VMH-1000

1. The VMH-1000 is a self-contained unit with a built-in engine and pump.
2. The VMH-1000 is a self-contained unit with a built-in engine and pump.
3. The VMH-1000 is a self-contained unit with a built-in engine and pump.
4. The VMH-1000 is a self-contained unit with a built-in engine and pump.
5. The VMH-1000 is a self-contained unit with a built-in engine and pump.
6. The VMH-1000 is a self-contained unit with a built-in engine and pump.
7. The VMH-1000 is a self-contained unit with a built-in engine and pump.
8. The VMH-1000 is a self-contained unit with a built-in engine and pump.
9. The VMH-1000 is a self-contained unit with a built-in engine and pump.
10. The VMH-1000 is a self-contained unit with a built-in engine and pump.
11. The VMH-1000 is a self-contained unit with a built-in engine and pump.
12. The VMH-1000 is a self-contained unit with a built-in engine and pump.
13. The VMH-1000 is a self-contained unit with a built-in engine and pump.
14. The VMH-1000 is a self-contained unit with a built-in engine and pump.
15. The VMH-1000 is a self-contained unit with a built-in engine and pump.
16. The VMH-1000 is a self-contained unit with a built-in engine and pump.
17. The VMH-1000 is a self-contained unit with a built-in engine and pump.
18. The VMH-1000 is a self-contained unit with a built-in engine and pump.
19. The VMH-1000 is a self-contained unit with a built-in engine and pump.
20. The VMH-1000 is a self-contained unit with a built-in engine and pump.



TURNING SODAS AT ANY TIME

The VMH-1000 is a self-contained unit with a built-in engine and pump. It is designed to be used in a variety of applications, including as a pump for water, oil, or other liquids. It is also designed to be used as a generator for power. The VMH-1000 is a versatile machine that can be used in a variety of ways.



NEW **MAJOR FEATURES**

1. The VMH-1000 is a self-contained unit with a built-in engine and pump.

2. The VMH-1000 is a self-contained unit with a built-in engine and pump.

THE NEW VMH-1000 HOLLOWED HOSE IS BUILT WITH STEEL DISCS AND LENGTHS TO 21 FEET LONG.

The VMH-1000 is a self-contained unit with a built-in engine and pump.

The VMH-1000 is a self-contained unit with a built-in engine and pump. It is designed to be used in a variety of applications, including as a pump for water, oil, or other liquids. It is also designed to be used as a generator for power. The VMH-1000 is a versatile machine that can be used in a variety of ways.

The VMH-1000 is a self-contained unit with a built-in engine and pump. It is designed to be used in a variety of applications, including as a pump for water, oil, or other liquids. It is also designed to be used as a generator for power. The VMH-1000 is a versatile machine that can be used in a variety of ways.

The VMH-1000 is a self-contained unit with a built-in engine and pump. It is designed to be used in a variety of applications, including as a pump for water, oil, or other liquids. It is also designed to be used as a generator for power. The VMH-1000 is a versatile machine that can be used in a variety of ways.

The VMH-1000 is a self-contained unit with a built-in engine and pump.



***The following woodturning videos are
available for hire to members.***

Turning Wood	Richard Raffan	2 Hrs
Turning Projects	Richard Raffan	1 1/2 Hrs
Bowl Turning	Del Stubbs	1 1/2 Hrs
Hollow Turning	John Jordan	2 Hrs
Bowl Turning	John Jordan	2 Hrs
Cutting & Sharpening	Chris Stott	1/2 Hrs
Turning Bowls	Chris Stott	1 1/4 Hrs
Turning Boxes	Chris Stott	1 1/4 Hrs
Decorative Effects & Colouring	Chris Stott	1 1/4 Hrs
The Basic Box	Ray Key	3/4 Hrs
The Capsule Box	Ray Key	3/4 Hrs
The Finial Box	Ray Key	3/4 Hrs
A Course on Spindle Turning	Ray Jones	3 Hrs
Elliptical Turning	David Springett	1 Hr
Woodturning Wizardry	David Springett	2 Hrs
Colouring Wood	Jan Sanders	1 1/4 Hrs
The Woodturning Workshop	Slack & Sutton	1 1/2 Hrs
Techniques from AAW Symposium 1995		2 Hrs
Instant Gallery from AW Symposium 1995		1 Hr
Slide Packs of the 1989, 1991, 1993 Loughborough International Seminars. - Slide Pack of the Hay-on-Wye exhibition 1996, Warwick International Seminar 1995, 1997		

To hire any one video or one slide pack, Please send 2 cheques one for £5 for one week's hire and one for £30 as a deposit which will be returned on the safe return of the video or slide pack.

Please make both cheques payable to AWGB.

Application for hire should be made to: David Grainger
(Address on page 3)

Insert the three 1/4 page
page ads supplied

Henry Taylor Tools

The Creative Edge

for woodturners and woodcarvers



When the creative urge tells you it's time to give your ideas shape and form you need tools you can rely on. Tools you can use in the sure knowledge that you will get the results you want - first time, every time.

Henry Taylor have been producing tools for over 100 years and all this acquired knowledge and experience is built into our leading Acorn and Blame brands. Using the best in current materials and technology, these tools can be relied on to perform to the highest standards.

Give yourself the creative edge by selecting your new tools from the comprehensive Acorn and Blame ranges.



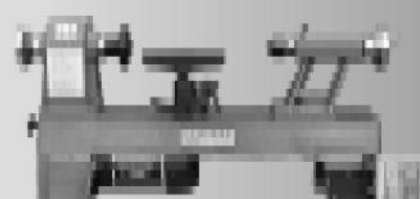
Henry Taylor Tools Limited

The Forge
Princes House
Liverside Street
Sheffield
S6 2BL

Tel: 0114 234 0802
Fax: 0114 280 2018
E-mail: sales@henrytaylor.co.uk
Web: www.henrytaylor.co.uk



Lathes and Chucks and Tools and Hardware and Abrasives and Polishes



Large range of **AXMINSTER** lathes to see from only **£179.79**



The unique patented **Masterchuck II** grips most things without fiddly adjustments. No need to dismantle to change jaws **£94.38** inc p&p in UK

Vietmare and Beurd
scroll chucks also in stock.

Microcrystalline wheels

- ✦ Grind sharper
- ✦ Grind quicker
- ✦ Grind cooler
- ✦ Self sharpening
- ✦ Lasts up to five times longer

details in our free catalogue



Clocks & tiles

Wood blanks

Pyrography machines

Much more!



Sharpening Manual £3.98

Packed with useful information to make tool sharpening easier. Free with any purchase.



Pyrography Machine
£93.30 inc p&p in UK

Fast Mail Order Service
Ask for our free catalogue

Visit Our Shop
Open Tuesday to Saturday
extensive range of quality
woodturning products.

Discounts for **AWGB** members

FREE DEMO'S

No need to book -
come any 1st or
3rd Saturday in
the month.

PETER CHILD

The Old Hyde, Little Yeldham, No Halsewood, Essex CO4 4QT
Tel 01707 337001 Fax 01707 330511 www.peterchild.co.uk



ESTABLISHED
1894
OVER



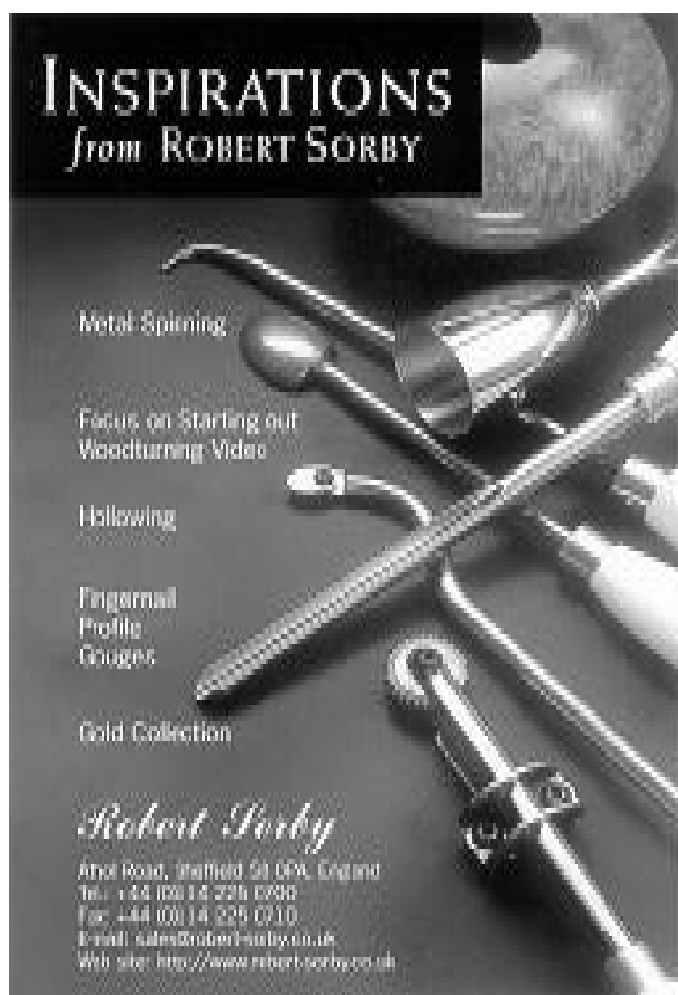

Specialists in tools, machinery and accessories for Woodturners,
Woodworking and Engineering. Also for Ironmongery,
Plumbing Materials, D.I.Y. equipment, Garden, Household
Goods & Arts & Crafts.

6-12 Park Street, Croydon CR0 1YE.
Tel: 0181 688 5513 Fax: 0181 781 0514

**10% Discount given to AWGB members
on wide range of goods**

INSPIRATIONS

from ROBERT SORBY



- Metal Spinning
- Focus on Starting out
Woodturning Video
- Hollowing
- Fingernail
Profile
Gauges
- Gold Collection

Robert Sorby
Arlow Road, Hatfield, St. Albans, England
Tel: +44 (0)344 225 0700
Fax: +44 (0)344 225 0710
E-mail: sales@robert-sorby.co.uk
Web site: <http://www.robert-sorby.co.uk>



**QUANTITY
DISCOUNTS
AVAILABLE**

Lincolnshire Woodcraft Supplies



**Easy to find
Easy to park
Only 2 mins
from A1**

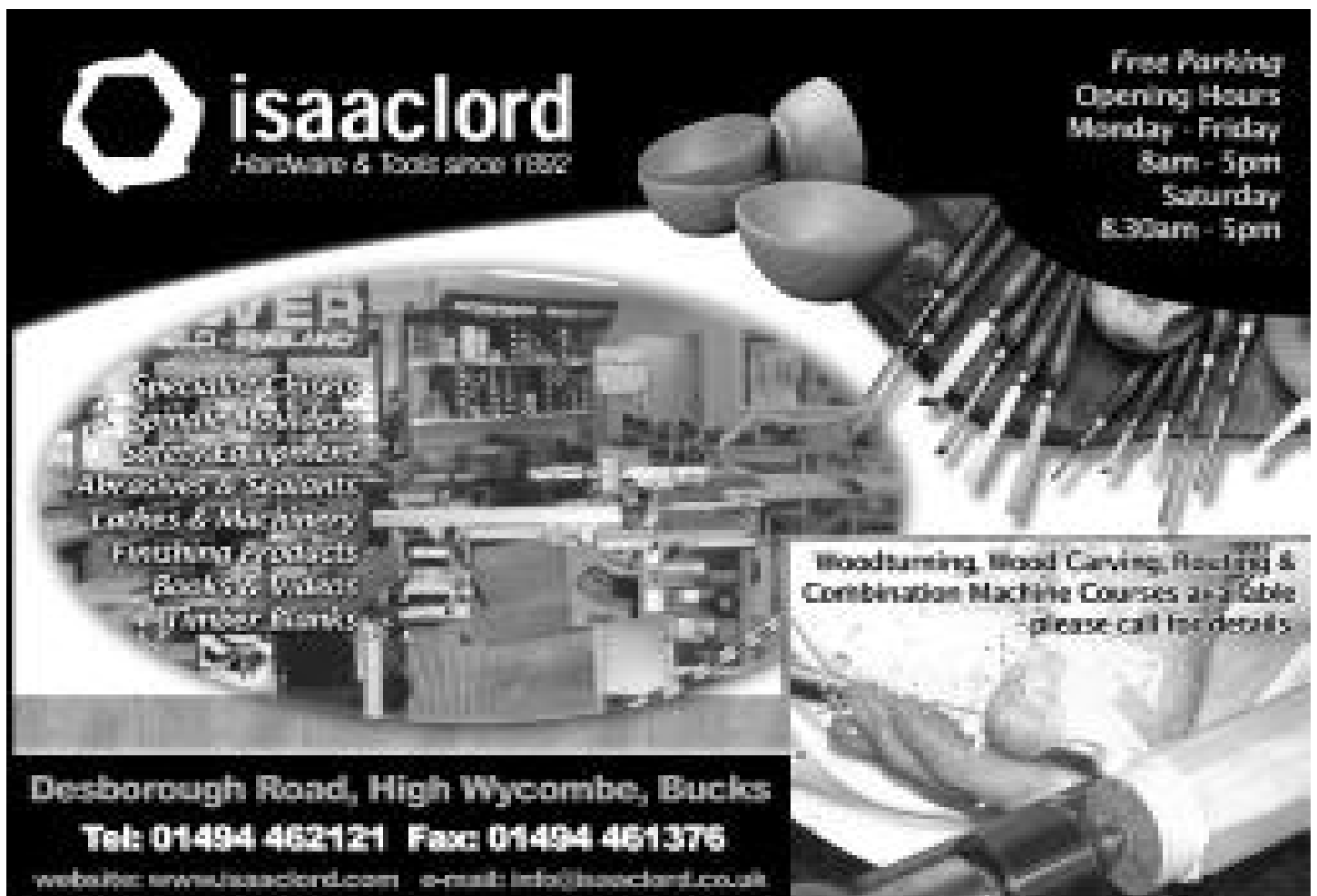
Over 60 Timbers in Stock, in Boards, Blocks, Discs, and Squares.
In English and Imported Hardwoods.
Also available Vitex abrasive, Turning Tools and accessories.
Catalogue available Send £1.50 inc. postage

Open 9.30am - 1.00pm – 2pm - 4.30pm Monday to Friday
Open 9.30am - 1.00pm – 2pm - 4.00pm Saturday

For a fast and efficient Mail Order Service with Expert Advice contact.

ROBIN STOREY
The Old Saw Mill, Burghley Park, London Road, Stamford, Lincs. PE9 3JX
Tel: 01780 757825

Boddys Advert as last issue



isaacclord
Hardware & Tools since 1882

Free Parking
Opening Hours
Monday - Friday
8am - 5pm
Saturday
8.30am - 5pm

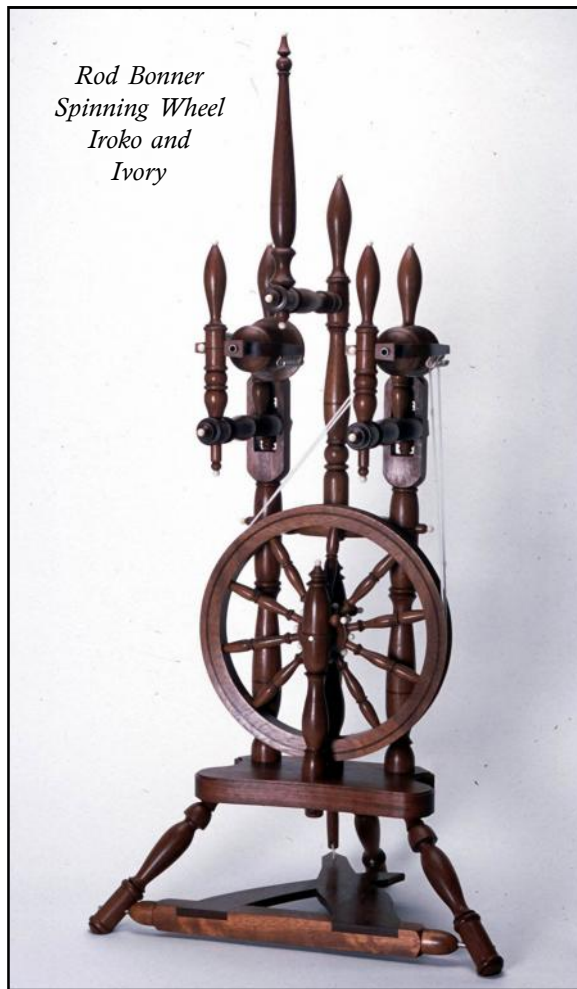
OVER 120 YEARS
Specialist Tools
& General Hardware
Sawing Equipment
Abrasives & Sealants
Lathes & Machinery
Finishing Products
Rocks & Tiles
& Timber Planks

Woodturning, Wood Carving, Resting & Combination Machine Courses and more - please call for details

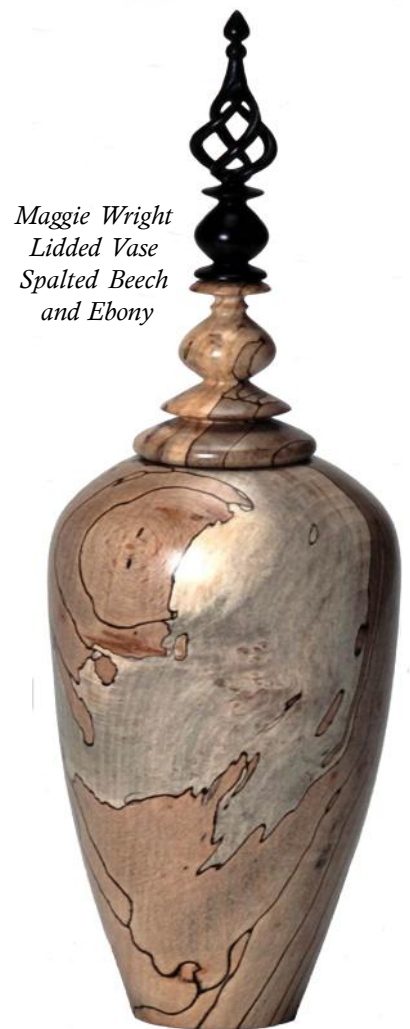
Desborough Road, High Wycombe, Bucks
Tel: 01494 462121 Fax: 01494 461376
website: www.isaacclord.com e-mail: info@isaacclord.co.uk



*Melvyn Firmager
'Embryo Multiple Rim Vessel'
Eucalyptus Gunnii and Bog Oak*



*Rod Bonner
Spinning Wheel
Iroko and
Ivory*



*Maggie Wright
Lidded Vase
Spalted Beech
and Ebony*

More from the selected fifty pieces from the 2003 Seminar

Photographs by Charles Sharpe

*Richard
Forgan
Bowl
Ash*



Desmond Dezelsky - Off Centre Lattice Bowl - Laburnum & Sycamore



Pat & Dennis Gleadell - 'Swirls' - Ash and Sycamore