

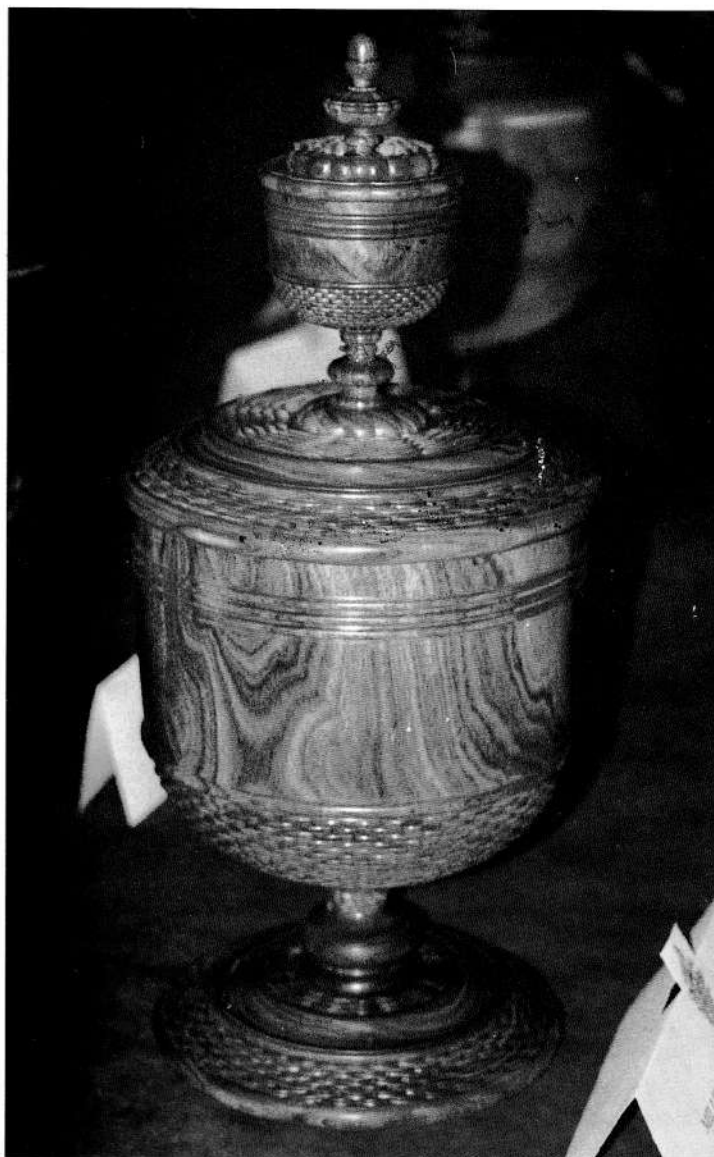
# *Revolutions*

THE NEWSLETTER OF THE ASSOCIATION OF WOODTURNERS OF GREAT BRITAIN

Issue No 54

£1.95 Free to members

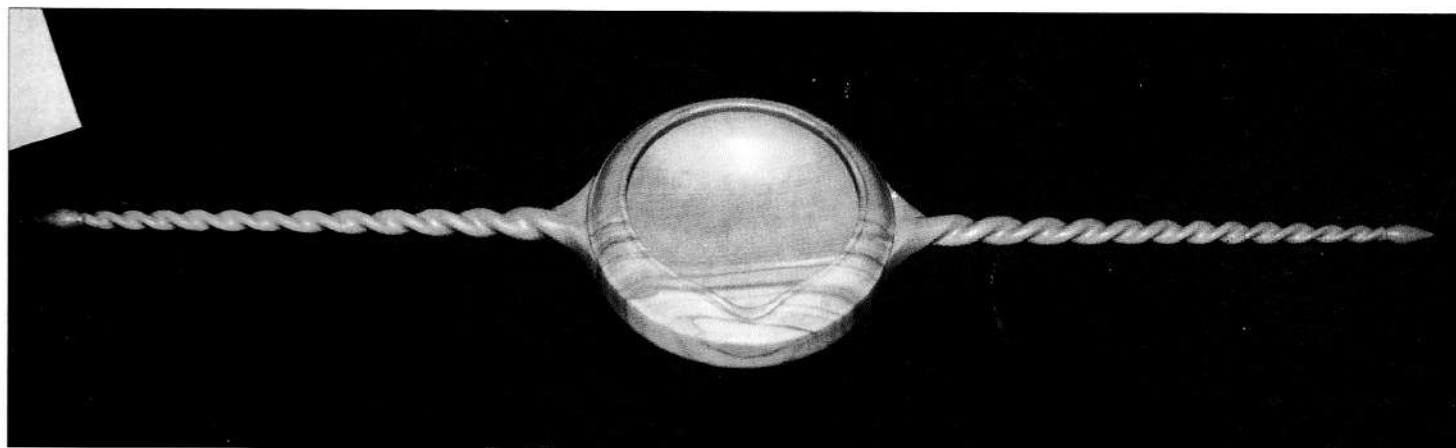
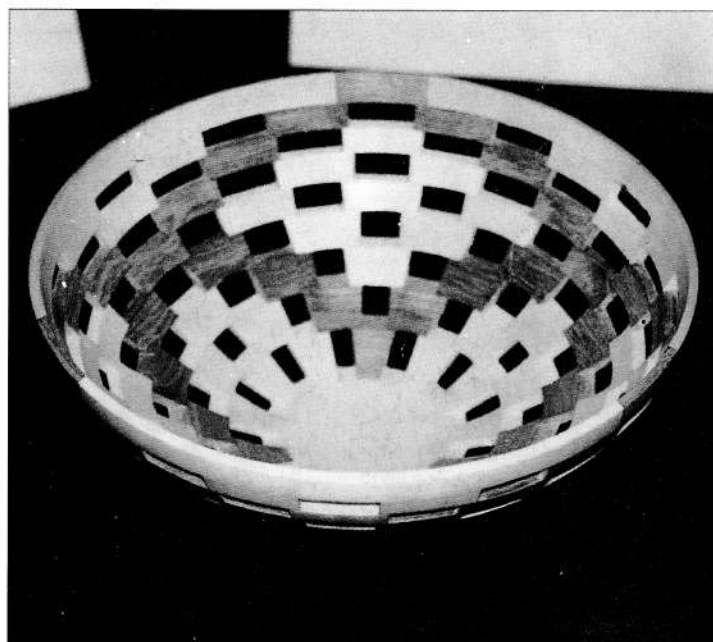
August 2000



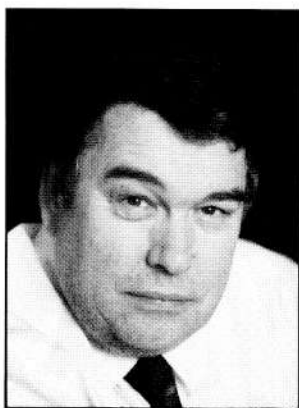
*WCT Competitions  
Results & Gallery*

*NEC Show*

*AWGB Seminar 2001*



# Chairmans Notes



Traditionally many hobbyist turners do not use their lathes a lot at this time of the year, as many take their holidays and get on with jobs around the house. I guess that those with gardens have spent more time in their workshops than the garden due to the very wet conditions of late. This has been true for me, my allotment has been neglected to some extent as I confess to being a fair weather gardener.

The Committee met on 14<sup>th</sup> May for a long 7 hours where many issues were discussed, some of which are detailed below and other pages of this issue.

## Seminar 2001

The dates for the seminar in 2001 are 10<sup>th</sup> – 12<sup>th</sup> August 2001 and will be held at Loughborough University. For those who came to Loughborough prior to the move to the University of Warwick I must stress that we are using the facilities of the University **NOT** the Art and Design college that we have used in the past. The seminars organised by the AWGB are the envy of seminar organisers around the world and we would not compromise that reputation by going back to the standards of 1993. Ray and I have visited Loughborough University. We consider the accommodation to be as good as Warwick and the venue for the seminar being superior to Warwick. The reason for not going back to Warwick is the

huge 30% increase they were imposing on their charges for 2001.

In other pages of this issue you will find details of the presenters that will be demonstrating for you at this seminar. For 2001 we have purposely looked for presenters that many of you do not see at local clubs or at National Woodworking exhibitions but yet have world wide reputations. Turners who can inspire and present you with new challenges and are well known. We have also introduced this time other methods of turning (ornamental and pole) which we hope you will find interesting.

We cannot tell you, at this point of time, the cost of the seminar until we have received all of the estimates. What I can say, is that I am confident that it will be no more expensive than 1999, and I am hopeful that it will be cheaper. Details in the next issue of *Revolutions*.

## The Worshipful Company of Turners Competitions

I went along to these competitions which were held in the historical setting of the Apothacaries Hall in City of London. The hall itself has magnificent dark oak panelling and the portraits of past masters of the livery company are hung around the room. The main hall was laid out with chairs for the presentation of prizes while the entries for the competitions were exhibited in a side room.

The number of entries to the competitions was very poor - only 7 entries for the plain turning competition and 12 for the open class. A lot of effort is put in by so many people to organise these competitions only to be let down by a poor response from our members.

The wassail bowl was a little better at 22 but this was due to so many entries from the Ornamental Turners. More details on these competitions later in this newsletter.

## New Treasurer

I am still carrying out this role which is fine for now, although unsatisfactory. We need a Treasurer as soon as possible and although we have had a couple of enquiries there have been no firm offers. The records are all held on a computer and all it takes is a couple hours a week to update them and deal with any correspondence. There is more work in a seminar year. Training will be given on the maintenance of these records and the AWGB would assist in any way it can to get you started. If you think you would like to take on this task please talk to me.

## Insurance

I mentioned in the last *Revolutions* the problems we were experiencing with the Insurance Scheme. Most of these have now been resolved and members, including myself, are renewing their private policies. All branch policies and the main AWGB policy have been renewed. We do know of claims that have also been dealt with. The main sticking point at the moment is getting policy certificates issued but we have been assured that these will be forthcoming in due course.

## Tuition, Demonstration and Commissions lists

Members were asked to return the forms for these lists, which were included in the last *Revolutions*, by the end of June. Many have been returned but we know there are many that

have not, including some of our well known professional turners. If you want to be included in these lists, which are also published on our web site, please return your forms to Tony Witham as soon as possible. If you have lost your form get in touch with Tony for a replacement.

## Woodworking Shows

This is the last newsletter you will be getting prior to various National Woodworking Exhibitions that are coming up and at which the AWGB will be taking part. Starting with Sandown in September, the NEC in October and the Axminster Exhibition in November. We will have a stand at a number of these shows to exhibit members work and as always we will be running the very popular Advice Clinics.

## Education Fund

In the last *Revolutions* I asked if anyone had ideas about what this fund could be used for. I had one phone call with a suggestion. The committee gave consideration to a number of options ranging from sponsorship of younger members, scholarships for members to attend dedicated courses and sponsorship of attendance at the seminar for deserving members. The committee have been tasked with the objective of coming back to the next meeting with firm proposals on the ideas presented to them.

Peter Brown has taken on the role of Youth Officer and will be bringing proposals, that would act as an all inclusive youth package, to the next meeting for consideration.

Mike Dennis

# The Association of Woodturners of Great Britain

www.woodturners.co.uk

## Executive Committee

### President

Ray Key, The Firs, 53 Weston Road, Bretforton,  
Nr Evesham. WR11 5HW  
Tel/Fax: 01386 830142

### Chairman

Mike Dennis, 72 Hawes Close, Northwood,  
Middlesex, HA6 1EW  
Tel/Fax: 01923 829844  
E-Mail: mike.dennis@care4free.net

### Vice Chairman

Tony Witham, 39 Horsey Road, Kirby-le-Soken,  
Frinton-on-Sea, Essex. CO13 0DZ  
Tel: 01255 671697  
E-Mail: tony@awitham.freemove.co.uk

### Treasurer

Mike Dennis, 72 Hawes Close, Northwood,  
Middlesex, HA6 1EW  
Tel/Fax: 01923 829844  
E-Mail: mike.dennis@care4free.net

### Secretary

Lionel Pringle, The Downs View, Hailsham Road,  
Stone Cross, Pevensey, East Sussex. BN24 5AS  
Tel: 01323 740861 Fax: 01435 868735  
E-Mail: lepringle@clara.co.uk

### Membership Secretary

Derek Phillips, 15 Greens Road,  
Cambridge. CB4 3EF  
Tel: 01223 312134  
E-Mail: derek.phillips@virgin.net

### Trade & Business Liaison

Reg Hawthorne, Kiln Gardens, Chapel Street  
Stow-on-the-Wold, Gloucestershire. GL4 1DA  
Tel: 01451 831675  
E-mail: RegHawthorne@breathemail.net

### Newsletter Editor

John Wilson, Bunkers, 19 Chiswell Road,  
Poole, Dorset. BH17 9FB  
Tel: 01202 246332  
E-mail: revolutions\_editor@hotmail.com

### Branch Committee Members

#### Herts & Beds

Bob Gregory, Conifers, Hudnall Lane, Gaddesden,  
Hertfordshire, HP4 1QE  
Tel: 01442 842711

#### Middlesex

Peter Garrison, 23 Mead Road, Uxbridge,  
Middlesex, UB8 1AU  
Tel: 01895 238636

#### Cumbria

David Grainger, Laurel Bank, Kirby Thore, Nr  
Penrith. Cumbria, CA10 1XN  
Tel: 01768 361744  
E-mail: woodinwest@care4free.net

### Thameside Woodturners Association

Peter Brown, 145 South Church Boulevard,  
Thorpe Bay, Essex, SS2 4UR  
Tel: 01702 588972

### Web Master

Brian Partridge, Homeside, Lady Lane, Hadleigh,  
Suffolk, IP7 6AF  
Tel: 01473 828489

## Contents

Chairmans Notes	2
The Association of Woodturners of Great Britain	3
Editorial	4
Chippings & Shavings : AWGB News Briefings	5
www.revs	6
Look After It!	7
Profiles - Branch Representatives	8
WCT Competitions	10
Woodland Heritage & Show Dates	12
Great Yorkshire Show Competition Results	13
Letters to the Editor	14
Obituary : Patrick Blake, Graham Hughes	15
So you want to be a woodturner - Part 6	16
NEC Show	18
Turn Out Your Best	20
News from the Branches	21
AWGB Affiliated Branches	22
For Sale - members sales	29

Articles, letters, tips, adverts etc featured in this Newsletter do not necessarily carry the endorsement of the Association of Woodturners of Great Britain.

## DATA PROTECTION ACT

If you object to your name, address and telephone number being held on a computer belonging to the AWGB, then please write to the Secretary. (Address Opposite)

The following woodturning videos are available for hire to members.

Turning Wood	Richard Raffan	2 Hrs
Turning Projects	Richard Raffan	1 1/2 Hrs
Bowl Turning	Del Stubbs	1 1/2 Hrs
Hollow Turning	John Jordan	2 Hrs
Bowl Turning	John Jordan	2 Hrs
Cutting & Sharpening	Chris Stott	1/2 Hrs
Turning Bowls	Chris Stott	1 1/4 Hrs
Turning Boxes	Chris Stott	1 1/4 Hrs
Decorative Effects & Colouring	Chris Stott	1 1/4 Hrs
The Basic Box	Ray Key	3/4 Hrs
The Capsule Box	Ray Key	3/4 Hrs
The Finial Box	Ray Key	3/4 Hrs
A Course on Spindle Turning	Ray Jones	3 Hrs
Elliptical Turning	David Springett	1 Hr
Woodturning Wizardry	David Springett	2 Hrs
Colouring Wood	Jan Sanders	1 1/4 Hrs
The Woodturning Workshop	Slack & Sutton	1 1/2 Hrs
Techniques from AAW Symposium 1995		2 Hrs
Instant Gallery from AW Symposium 1995		1 Hr

Slide Packs of the 1989, 1991, 1993 Loughborough International Seminars. - Slide Pack of the Hay-on-Wye exhibition 1996, Warwick International Seminar 1995, 1997

To hire any one video or one slide pack, Please send 2 cheques one for £5 for one week's hire and one for £30 as a deposit which will be returned on the safe return of the video or slide pack.

Please make both cheques payable to AWGB.

Application for hire should be made to: Peter Garrison (Address Opposite)

## AWGB LAPEL BADGES

(Brass & Enamel)

COST £2.50 inclusive of post and packing

Send Cheque etc, to Reg Hawthorne (Address Opposite)

MAKE ALL PAYMENTS TO AWGB

## CLOTH BADGES

For sewing on Smocks etc

£4.00 inc Post & Packing

**Copy deadline for the next edition of**

**Revolutions**

**15 October 2000**



# Editorial

## Summertime Blues

Our Chairman has commented in his notes on the summer hiatus that afflicts many in the woodturning fraternity. The demands of repainting the house, tending the garden and keeping the constantly growing green stuff in check loom large and seem never ending. I suppose that the delights of the sun on our backs also has much to do with the stillness that overtakes many turning workshops at this time of the year. Personally I have been trying to fit in a move of workshop amidst the other family and seasonal demands so my productive activity has also been at a standstill.

A brief foray to the Channel Islands has provided an impetus to the preparations for the new workshop for I had the opportunity to renew acquaintance of a fellow turner I met earlier this year. As always the opportunity to nose around someone else's workshop proved a pleasure and provided some food for thought as I struggle to get mine right.

Also just around the corner are further cures for the summertime blues.

## Showtime

The fading days of summer and early autumn bring a round of several major shows and opportunities to see the masters at work and meet like-minded members on the AWGB stand where the usual features and advice clinics will again be much in evidence.

Perhaps also you will be unable to resist that new piece of kit that will help to improve and expand your activities in the coming winter months.

Further details and dates for your diary are to be found in this edition – a visit to one or more of the shows is sure to

prove an enjoyable day out and return you home with a smile on your face – even if your bank manager looks worried!

## Competitions & Exhibitions

Another benefit of visiting the shows is the opportunity to inspect the fruits of others labours for most now have competitions associated with them. The work on display is usually of a high standard and I for one find it a source of pleasure and inspiration. There is always something that triggers a desire to be home in the workshop to experiment and try for oneself. Later in this issue you will find the results from some recent competitions.

Our cover features the work of the winners of the recent Worshipful Company of Woodturners competitions held at Apothecaries Hall and you will find a gallery of further work from this event on a later page. In fact there is still time to enter for some, if you are quick. Alternatively, take your time but promise yourself to enter something in the Greta Yorkshire Show 2001 – advance warning of the competition is to be found in these pages.

## 2001

No not a Space Odyssey but the time when the Biennial AWGB Seminar is upon us again. Already a small subcommittee led by our hardworking Chairman have put in many hours and presented their outline proposals to the last meeting of the Executive Committee. You may read of the plans thus far on the next page and mark August 10-12 2001 in your diary.

Next years event will be at Loughborough not Warwick but be assured it promises to continue the long-standing tradition of memorable



feasts of woodturning. There is something for everyone – an event not to be missed. Full details and booking forms will be published with the next edition of *Revolutions*. Keep feeding your piggy bank!

## Newsletters & Contributions

Thank you for all the Newsletters and the contributions for *Revolutions* that I have received. The response has been most encouraging. If I have not used your masterpiece – yet – .....watch this space! It is also apparent that there are many things appearing in Branch Newsletters that are worthy of a wider audience. I shall be seeking to give some of these an airing in future issues. The first such offering is to be found elsewhere in this issue. In the meantime please keep the material flowing – if your branch has not yet added me to its circulation list please do so. If you feel moved to put pen to paper, or have an idea you want to explore – please get in touch.

It is my aim to develop this publication by evolution not revolution – but I hope that you will see gradual changes that will improve the publication for all members. I thank the few of you who have contacted me to make constructive suggestions. I have found those discussions most helpful. If you have any views about the future shape or content of *Revolutions* please write, phone or email – I am always pleased to hear from the readership.

**John Wilson**

# Chippings and Shavings AWGB News Briefings

## AWGB Seminar 2001 Loughborough

Full details will be given in the next edition of *Revolutions* but to whet your appetite further here is the text of the Press Release that the AWGB has issued to the media.

The Association of Woodturners of Great Britain are pleased to announce that their first seminar of the new millennium will take place between 10th-12th August 2001.

The most significant change this time around is that the decision has been taken to move the venue to Loughborough University, a move which has only been necessitated by the continual enormous increases in the fees that Warwick University found it necessary to charge. At the proposed level of costs the AWGB felt that the prices they would have to charge for the seminar would have been totally unrealistic.

Faced with the possibility of having to drastically change the format to make the event viable at Warwick, the AWGB were forced into looking at alternative locations, mindful of the fact that the facilities at Warwick were always going to be hard to surpass. At Loughborough University they are convinced that they have discovered a venue which is going to be as good as, and in some areas even better, than those that were on offer at Warwick, and they are delighted that they will be able to keep the highly acclaimed social aspect in being, things like the banquet and its attendant auction as well as the popular bar extensions. The over-riding consideration is that they now feel confident in being able to offer a seminar at a price that will be seen to be exceptional value for money, and they hope to win back those delegates who may have had to think twice in previous years because of escalating costs. Of particular interest to the less agile of woodturners is the fact that the on-site hiking will be greatly reduced. Access

for the disabled should also be much more readily available.

The AWGB are convinced that the change of venue can only enhance their enviable reputation of hosting the most enjoyable and impeccably organised seminar in the world, but no seminar would be of interest if the presenters were anything other than top standard and this time around the organisers have tried to ensure that the list of demonstrators include people who have not been over exposed in this country, but who, nevertheless, have international reputations as turners of distinction. The list includes the following: Dale Nish (USA), Jean Francois-Escoulon (France), Alain Mailland (France), Willie Stedmond (Ireland), Paul Coker, Mark Hancock, Mike Scott, Jules Tattersall, Robin Wood and Stuart Mortimer (all from the UK). There will be some additions to this line up and also some changes to the manner in which the seminar is presented to the delegates, all of which will become apparent as August 2001 draws closer.

## Questionnaire

Included with the last edition of *Revolutions* was a questionnaire for completion by those members who demonstrate, accept commissions or provide tuition. Completion is a must if you wish to be included on the register that forms part of the Branch Handbook. Tony Witham tells me that several well-known names would seem to be missing at the moment. If you wish your name and services to be included please contact Tony asap, his contact details can be found on page 3.

## Irish Seminar

Ambrose O'Halloran, Secretary of The Irish Woodturners Guild reports strong demand for the seminar to be held in Belfast from September 8-10th. Bookings are now through the 250 barrier. Several members of the AWGB Executive and

other members have already booked their places. If you wish to attend act now.

## New Treasurer

The Association is still seeking a new Treasurer. Mike Dennis, our Chairman, continues to combine the duties of Treasurer with his heavy load as Chairman. As previously reported this is a less than ideal situation and a willing, suitably skilled volunteer is sought.

Any suitably qualified member who is willing to give service to the Association is invited to contact Mike for an initial discussion.

This is an ideal opportunity for one lucky member to realise the To Be Or Not To Be sentiments expressed by Ray in the last edition.

## STEPHEN NEIL JARVIS

Neil died tragically in a road accident on June 10<sup>th</sup> at the age of 47. He had followed in his father's footsteps in running the workshop and business at British Gates, Biddenden, Kent. A qualified engineer, he was no mean woodturner and was always keen to impart his knowledge and skill by conducting demonstrations at the woodyard.

Neil had a cool and calm approach to his work on the lathe. He was a man of few words, but possessed a keen sense of humour and great skill with tools and machinery. Neil always produced an excellent finish to his workpiece, straight from the tools, and his gentle and steady approach will linger in the memory. An accomplished craftsman, a gentleman in every respect, Neil was a man to be admired and imitated. The crowded church for his funeral was a fitting tribute to a young man who achieved so much for the pleasure of others. Neil will be sadly missed.

# WWW.REVS - A Turners Guide to the Web

By Laura Ponting

What are all these 'WWW's we see everywhere? Do they have any use for us woodturners? Simply put (and these things seldom are) the letters 'WWW' stand for World Wide Web - the interesting bit of the Internet. Even more simply put is the answer that 'Yes' the Internet has a great deal to offer us woodturners.

The most difficult bit about the Internet is working up the courage to have a go. So what is the Internet? The Internet is basically millions of computers around the world connected to each other. The computer in your office or child/grandchild's bedroom is not permanently connected to the Internet - you just connect to it when you want to. When connected (or 'Online') all the computers in the world can communicate to each other -with our help!

There are two main parts to the Internet as far as most of us are concerned. There is E-mail (a quick and easy way of sending messages around the world -or just around the corner) and the World Wide Web (millions of 'sites' with pictures, text and mines of information). Let's look first at E-mail which allows us to do helpful things such as send E-mails to people in America for the same price and at the same speed as it would to send one to the fellow member of your local woodturning club.

E-mail is a short term for 'electronic mail'. Basically an E-mail can be anything from a letter or a brief note to a long document with pictures and even animation or film attached to it. In other words I can write a note to a wood supplier asking if any air dried 4" thick ash is available and in what sizes/ costs etc. and copy this note to all the other suppliers at the click of a button. This stops all those hour-long 'phone calls around the country to get that special piece of wood needed for a commission or competition piece. E-mail can be sent and received any time your

computer is connected to the Internet and any E-mail sent to you whilst you are not connected will be saved until you go 'Online'.

I E-mailed various woodturning groups to see how they used E-mail and it can be a great asset. At East Surrey Woodturners, for example, a lot of committee work is carried out using Email thus saving time and money on long telephone calls. Another great thing about Email was pointed out to me by East Surrey Woodturners. If you have problem in the workshop and need help or advice you can Email 25 other woodturning friends at once to get all the wisdom you need without having to wait until next Tuesday evening before you can finish that bowl!

So, that's E-mail...but what about the WWW's?

The World Wide Web is composed of millions of Web sites. A Web site can be anything from a picture of your latest creation with a few lines about yourself to many pages of colourful text, sound, pictures and film. Every Web site has an address (or URL). Most of these addresses start with 'WWW'. Thus the address for the AWGB Web site is [www.woodturners.co.uk](http://www.woodturners.co.uk) and there you will find all sorts of information about the AWGB, other woodturners, suppliers and events and so on. It sounds great doesn't it? So how do you started?

To set up at home you need a computer, a modem (the bit that connects your computer to the Internet via your phone - this is now normally part of the computer when you buy it) and a phone line. The latter connects you to an Internet Service Provider (ISP) that gives access to the Internet. Your computer will come with a Web Browser (something like Internet Explorer or Netscape) which enables you to view sites on the Web. Don't panic about all those new phrases and words! When you buy a computer most already have everything you need just to turn on and go!

But you don't have to buy all the gear yourself to try it. You can have a go on a friend or relative's computer or try your local library. Many libraries have computers which are Online and have the advantage of a friendly librarian to get you started.

Once Online there are two main ways to get started. Firstly, if you know the URL (web address) of the person or company you're looking for simply type it in and press the 'Go' button.

However, if you don't know the URL of the person or company your looking for then you can use a 'search engine'. Search engines basically act as indexes and directories for millions of Web sites. Today, I used Lycos and typed in 'woodturning' and found that there were 766 relevant sites in the UK and Ireland with a summary on each site. By narrowing the search to 'woodturning courses' the list was whittled down to 153. Still a fair range to choose from. Once you have chosen your site you can click on the list and then go to that site. Most sites have areas of text or pictures that will 'link' you to another page or site. Simply click on a 'link' and the new page appear and you may well find that you have been transported from Yorkshire to New Zealand!

One of the growing uses for the Internet is Online shopping. There can be huge advantages to shopping Online. Due to the reduced overheads companies often offer bargains over the Internet and delivery is very often free (even if a charge is usually made for non-Internet delivery). Everything a woodturner could dream of can be bought Online and from all over the world- wood, machinery, accessories and consumables. From a simple tin of wood dye to a massive lathe it's all available.

The main worry is credit card security. There are some important points to follow when ordering goods on the Internet. The main browsers (*Internet Explorer* and *Netscape*) have a padlock



symbol in the bottom of the screen. This indicates whether the company has arranged for a secure server to encrypt your credit card details so that they are not accessible to other parties. If the padlock is closed then the server is secure but if the padlock is open then DO NOT commit yourself to a credit card transaction. Other tips are:

- Try to use familiar reputable companies.

- If you will be dealing a lot with a particular company arrange for an account to be set up so that only a password or number need be entered Online.

- Don't submit credit card details by E-mail. The E-mail system is NOT SECURE.

- If you really don't trust the Web you can always look up information on the Internet and then phone an order through but you will miss out on any discounts.

The other worry about using the Internet is how much it costs to set up and use. There are now a large number of Internet Service Providers which will give you unlimited free access to the

Internet, an E-mail address (usually more than one) and very often some Web Space to make your own Web Site for free. However, if you have any problems with these free ISPs you may have to call their very expensive technical support number. Not all ISP providers are the same, however. My ISP gave free unlimited E-mail accounts and unlimited web space and a normal rate helpline number. They even call me back if the person I'm dealing with can't help me! Shop around! Check the listings in the back of a magazine such as 'Internet Advisor' that compares the costs of all the ISPs.

What about phone bills? Actually Internet use can be fairly cheap. To send E-mails is very cheap, as the phone connection does not have to last very long. One tip is to write all your E-mails 'Offline' and then send them together having only to make a single connection for a few seconds. Some ISPs offer free telephone calls - but this usually entails changing your entire home phone contract to them. It still may be worth it if you plan to be Online a lot.

Otherwise, all calls on the Internet are

charged at BT Local Rate. (This may change in the future to being much cheaper or even free after a one off payment).

Don't forget that even BT Local Call Rates vary. They are 3.95p per minute Monday to Friday 8am -6pm and then are less than half that price in the evenings (from 6pm -8am) at 1.49p. At weekends (from Midnight Friday to Midnight Sunday) the cost is just 1pence per minute. This means that all E-mails can be sorted out in the morning and evenings and any non-essential use of the Internet can be left to the weekend. At this time the whole system also operates more quickly as pages do not take so long to download because the Americans and business users are not clogging up the works in Cyberspace.

[In the next article in this series we will look at how to set about becoming part of the World Wide Web by setting up your own web site. We will also check out some of the most interesting sites on the Web for woodturners.]

---

## Look After It !

By Alan Spargo

*This article first appeared in the Middlesex Woodturners Association*

A woodworking lathe is a very forgiving tool. Rugged, and simple in construction, it will go on working even when neglected or abused. But it will work much better when it is properly looked after. I am always surprised to find that many turners will carry on working with sticking tool posts, cranky tailstocks and so on. Often clamping screws show considerable signs of wear and are so stiff to turn that a clout with anything available is needed to get them to hold. All this need not be. A drop of machine oil on screw threads and the collars of clamping levers will work wonders. Special dry lubricating PTFE sprays can be used to give sliding parts that silky feel, but a regular wipe over with wax polish is almost as good, and everybody

has wax polish to hand.

Most headstock bearings are sealed ball races these days. They need no oil, and will run for years before replacement is needed, but Coronet lathes and those made by Record to the basic Coronet headstock design have an adjustable bronze front bearing. These bearings need regular careful adjustment, and oiling should never be neglected. One problem with these bearings is tightening up the spindle as it warms up because of the friction of the belt upon the pulleys, especially at high speeds. Slackening the hot bearing will produce looseness when the spindle cools off, so what to do? An answer may be to use oil containing molybdenum disulphide

('Moly' for short). 'Moly' oil additives can be found in motor accessory stores, and a small container will last for many years. When 'Moly' treated oil is used, the bearing can be more closely adjusted when cold, and will be less likely to tighten when the spindle warms up. Oh, I nearly forgot! Too much belt tension on these machines is bad news for the lubrication of the front headstock bearing.

---

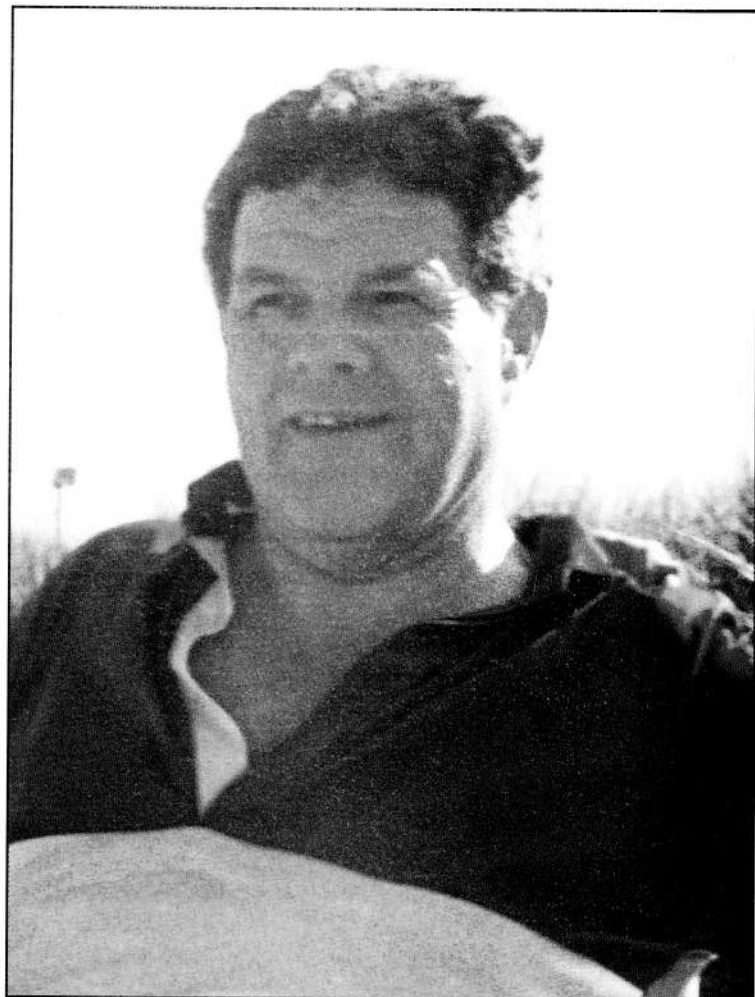
### Ed. Note

*We are aiming to give wider circulation to interesting articles from branch newsletters - keep them coming!*

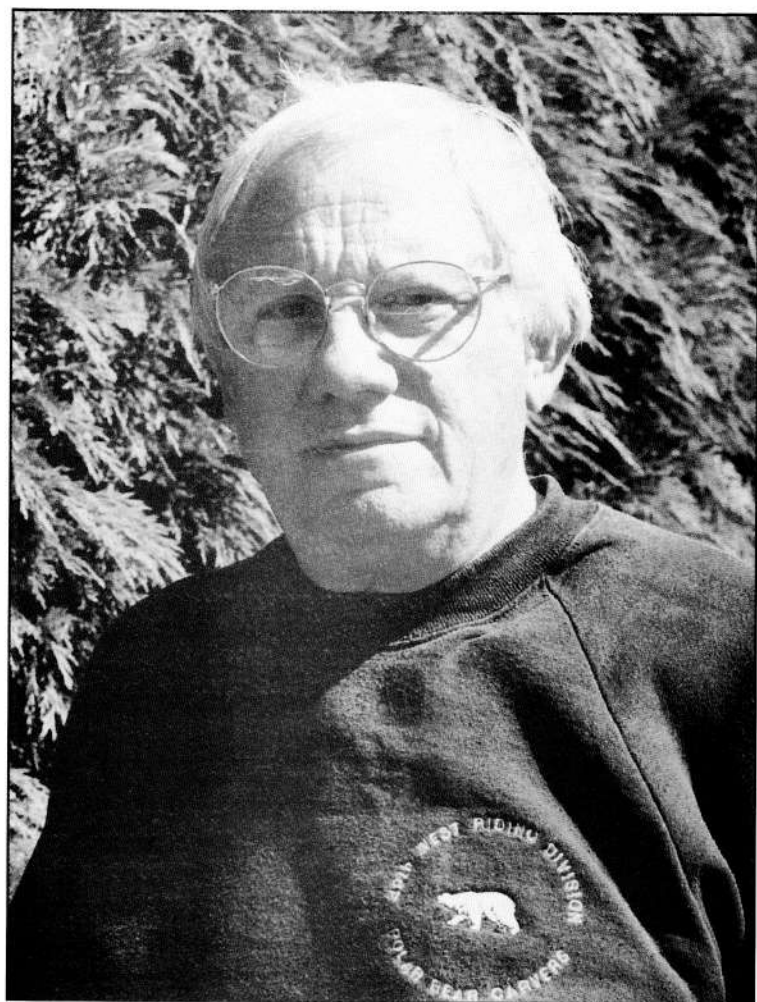
# PROFILES

Branch Representatives

Bob Gregory



Peter Brown





# Bob Gregory

I was born in Southall, Middlesex on the 15<sup>th</sup> November 1930 and became an articled trainee surveyor to a Chartered Surveyor in Marlow Bucks when I reached the age of 17 years.

Throughout my working life I have always been interested in timber and its use in building mainly due, I suppose, to being involved in repair and supervision of building work. I finished my employed life working as a Chartered Surveyor with a London City firm of Chartered Surveyors

called St Quintin. I took early retirement when I reached 60 years of age in 1990.

On retirement I started my own Surveying Consultancy practice assisted by my wife.

I also started after retirement to go to art classes working in watercolours and still carry out this activity today. When I reached the age of 65 my wife treated me to course of instruction in wood turning with a wood turner near Cromer. Shortly after I purchased a Record lathe and tools and became more involved in woodturning. I now have a reasonably well fitted out workshop. Unfortunately due to my commitments with my business I have not had as much time to devote to wood turning as I would like. In the main I like

turning bowls, plates and table lamps. However I am sure I will develop a liking for other forms in due course as my experience develops.

I have been a member of the Herts & Beds wood turning Club for the last 3 to 4 years and thoroughly enjoy club night activities particularly when we have a good demonstrator. It is because of this Club interest and activity that I was willing to stand as a Branch representative.

I hope my measure of help as a Branch representative will help to promote what I consider to be one of the best creative crafts there is for men and also women to take up as an activity

---

# Peter Brown

At a fairly early age, much to the surprise of family, friends and later work colleagues my ambition was to be a Biologist.

Having now retired I sometimes share this bemusement that I went on to pursue a varied and interesting career in research as a fully qualified Chartered Biologist. Particularly as the school I attended had never heard of 'O' levels!

During my time at work I obtained a degree which included the examination of the structure and habitat of a wide range of plant species. It was through these studies that I developed a keen interest in the structure and growth of trees and the wood that was derived from them and used in various ways by man.

My work and the raising of a family left little time to put my theoretical interests into practice in any real sense as a hobby.

However a few years before retirement I started to develop leisure pursuits which were associated with previous activities. First I was attracted to carving. After spending many relaxing but sometimes frustrating hours on a number of projects I decided it was time to talk to the experts. Martin Turner, George and Peter Benson have been very supportive in helping me to refine my approach to carving.

Having experimented with a range of woods in relief and in-the-round I ventured into the realms of woodturning, purchasing (out of my lump sum) a Myford Mystro. By combining my carving experience with turning techniques I found it possible to highlight the beauty of grain patterns and figuring whilst producing a range of functional items.

Having moved through the 'bowl bit' I am anxious to concentrate further on developing design techniques which highlight the characteristics of particular woods whilst retaining the functional basis of the piece.

I am an active member of Thameside Woodturners Association and pride myself in working with my committee colleagues over the last four years to establish a thriving and active membership.

Probably, as a reflection of my previous experience I feel strongly that as users of wood we can only adequately do justice to the craft by understanding fully our raw material. To this end I have given a number of talks to woodturning groups on the structure of wood and its influence on the performance when turned.

I have recently joined the Committee of the AWGB and my hope is that it may be possible to assist members to learn more about the unique properties of various woods and how their beauty may be best displayed.

My contact to date within the world of woodturning and linking with the general public suggests that our craft is sometimes under valued. If I might be so bold, on occasions this response appears to stem from a somewhat inward looking approach by the woodturner.

It is my view that it is the responsibility of the woodturner to portray the beauty and value of our raw material.

Interestingly enough the aspect was amply illustrated as a result of a Thameside competition. Members were asked to turn a goblet to a set specification. Although one goblet most closely met the required dimensions and won first prize, the goblet voted unanimously as the – members choice – was crafted from an extremely attractive piece of well figured laburnum.

I am continually being enthralled by the work being produced, particularly on display at prestigious wood shows. Nevertheless I feel there is scope for engendering an appreciation of the uniqueness of wood and the expertise involved in turning amongst those not directly involved in the craft.

It seems to me that a void exists that needs to be filled between the wood work shows, attended predominately by woodturners, and the village craft fair where our best work is not always on show, perhaps via local press, magazines and even TV.

# Worshipful Company of Turners Competition Results

The Worshipful Company duly held the competitions of which notice was given in Revolutions 52 at the Apothecaries Hall on June 28. The numbers of entries was somewhat disappointing but the work on display was of a high standard. Readers will already have seen three examples on the front cover of this issue. The photographs there show the winning entries in each category, The Millenium Competition, requiring a set piece - a wassail bowl, Plain Turning and an Open competition. The full results are as follows.

## The Millenium Competition - A Wassail Bowl

**Judges** - The Master, Ray Key, Geoff Brandon

1st £1500 plus Certificate	Jeremy Soulsby	Lignum Vitae Wassail Bowl
2nd £1250 Plus Certificate	John Edwards	Lignum Vitae Wassail Bowl
3rd £1000 plus Certificate	John Edwards	Lignum Vitae Wassail Bowl
Commended £500	Paul Coker	Lignum Vitae Wassail Bowl
	Desmond Dezelski	Sycamore Wassail Bowl
	Philip Holden	Lignum Vitae Wassail Bowl
	Roger Holley	Lime/Elm/Lignum Vitae Wassail Bowl
	Michael Knight	Lignum Vitae Wassail Bowl

## Plain Turning Competition

**Judges** - Ray Key and Bert Marsh

1st Gold Medal & Certificate	Richard Haseldean	Olive Vessel
2nd Silver Medal & Certificate	Richard Hasledean	Tazza in Bocote
3rd Bronze Medal & Certificate	Barry Jackson	Solitaire Game in a variety of woods
Commended - A Certificate of Merit	Desmond Dezelski	Jarrah & Sycamore candlesticks

## Open Turning Competition

**Judges** - Gordon Sloan and Mr P Worlidge

1st £125 & Certificate	Desmond Dezelski	Sycamore/Laburnum bowl
2nd £100 & Certificate	Nicholas Mayne	Pink Ivory bowl
3rd £80 & Certificate	Paul Coker	Lignum Vitae Bowl
Commended £50	Keith Donald	Sycamore and various woods bowl
	Keith Donald	Mahogany and Sycamore bowl
	Eddie Morgan	Myrtle Bowl
	Rodney Tallack	Walnut bowl

# WCT Competition Gallery

Left - 2nd Plain Turning

Richard Hasledean - Tazza in Bocote

Bottom left - 2nd Open Competition

Nicholas Mayne - Pink Ivory Bowl

Below - 3rd Open Competition

Paul Coker - Lignum Vitae Bowl

Front Cover :

Left - 1st Millenium Competition

Jeremy Soulsby - Lignum Vitae

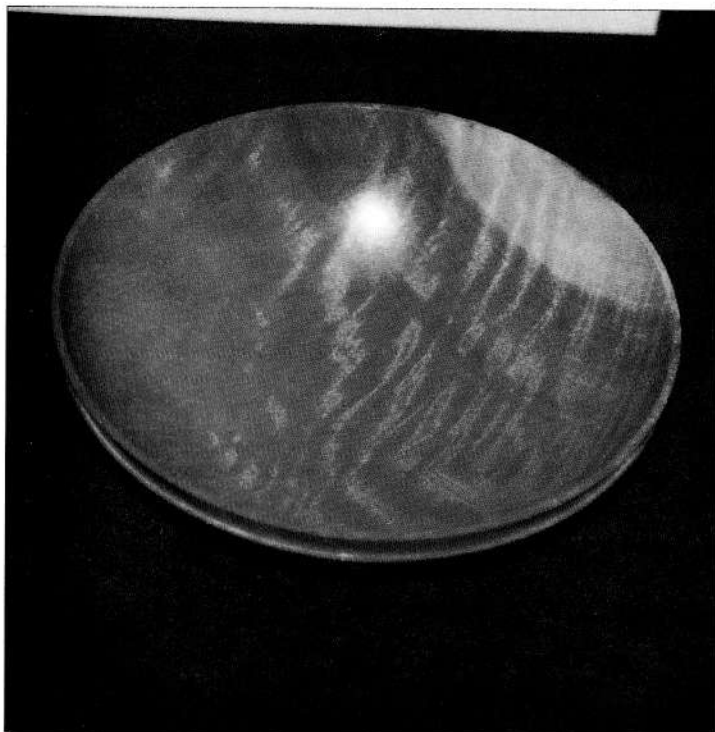
Right - First Open Competition

Desmond Dezelski

- Sycamore & Laburnum Bowl

Bottom - First Plain Turning

Richard Hasledean - Olive Vessel





# Woodland Heritage

*An introduction by Lionel Pringle AWGB Honorary Secretary*

About this time last year, that well known supplier of quality coffee and good "woody" conversation Dave Bates, introduced me to an interesting group called **Woodland Heritage**.

I had been, and indeed still am, a long time member of the Woodland Trust an organization that is probably considerably more widely known. Whilst acknowledging that the Trust has done, and continues to do, a lot of very good work I had become a little concerned about their tendency towards a policy geared more to preservation and conservation of timber stocks as against one of informed farming and production of timber products, trees do not live for ever and in my opinion they should not be viewed as ancient monuments.

Woodland Heritage is a registered charity which was started by a group of cabinetmakers concerned by the UK's dependence on imported timbers and by the way that our "much diminished woodlands" were being managed in this

country, their membership ranges from 9 years to over 90 years old and includes everybody from the grower through to the retailer of finished products. They are concerned to promote the growing of indigenous hardwoods of which this country should be justifiably proud and to assist those scientists and arboriculturalists who are striving, without any form of adequate government funding, to overcome all types of problems caused by fungal attack through to insect activity.

On the first really hot Saturday of the summer I trekked all the way from the south coast to the Welsh side of Hereford to attend my first Woodland Heritage Field Day and AGM, it was a trip that was really worth the effort. As a user of British hardwoods for most of the time that I have been able to make sensible conversation, yes as long as that, I have always got pleasure from walking in our forests and woodlands. But this time I did it with the assistance of a group of people who were absolutely fanatical about the work that

they were doing in order to be able to produce varieties of timber of an extremely high standard. I was introduced to stands of Oak and Sycamore that were absolutely amazing in the quality and size of their trunks.

What impressed me most I think was that whilst there was a difference of opinion amongst the gurus present as to what route was best to achieve a given goal, there was no animosity, even though some points of view were strongly made.

All in all I feel that the future of British Forestry and the timber product upon which we all rely, to a greater or lesser extent for the pursuit of our business or hobby, is in good hands whilst the Woodland Heritage is making efforts to secure the future of forestry in this country. If you would be interested in supporting them they have a range of membership options to suit all pockets and can be contacted at, PO Box 2950, Epping, CM16 7DG.

---

## Dates For Your Diary Forthcoming Shows

The summer races on - yes as I write this it really is sunny and warm, and no rain for sometime. No doubt the annual standpipe panic is not far away. As Mike Dennis has written in his notes, this is the time of year when other things put a brake on the woodturning activities of many. Several acquaintances of mine do not touch a gouge from Easter until the early Autumn. But, never fear, the season of shows and exhibitions is almost upon us. Here is a checklist of several of the larger events that will be upon us before we know it - and summer will be a distant memory - but at least the timber will be spinning and we may have to treat ourselves to that vital piece of equipment from one of the shows!

September 1-3	Craft Supplies Great Autumn Show	Bakewell, Derbyshire	More details on the back cover
September 8-9	Yandles Show	Martock, Somerset	Considered by many to be one of the best - and its free entry & parking
September 22-24	Sandown Park Woodworking Show	Esher, Surrey	Details from Meridienne Exhibitions, The Fosse, Fosse Way, Leamington Spa, Warwickshire CV31 1XN 01926 614293
September 29 - October 1	Woodworking & Turning Show	NEC, Birmingham	Details elsewhere in this issue
November 9-12	Axminster Power Tools Show	Shepton Mallet, Somerset	Considered by all who have visited as one not to be missed

# Great Yorkshire Show 2000

## Harrogate - North Yorkshire

The Great Yorkshire Show was held in early July with competitions for woodturning, woodcarving and marquetry being conducted over the 11th, 12th and 13th. These competitions were sponsored by The Yorkshire Agricultural Society, John Boddy's Fine Wood and Tool Store, Ashley Isles Tools, Henry Taylor Tools, Stubai Tools and Art Veneers.

The Woodturning Competition was judged by that well known Liverpoolian, Ray Jones, with the following result :

**Gold:** Ian Clarkson - Hebden Bridge - Sycamore Bowl

**Silver:** Darrell Rushworth - Ossett - Burr Elm Bowl

**Bronze:** Bryan Scott - Bingley - Yew Vase

**Commended:** Margaret Gerrard - Boroughbridge  
- Love Bird in a Maple Cage

**Reserve:** Simon Whitehead - Shipley - Ash Bowl

The winners shared in prizes in the form of cash, tools and vouchers donated by the generosity of the sponsors .

The standard in all competitions was of a very high order and all judges commented on the difficulties they had faced in coming to their decisions.

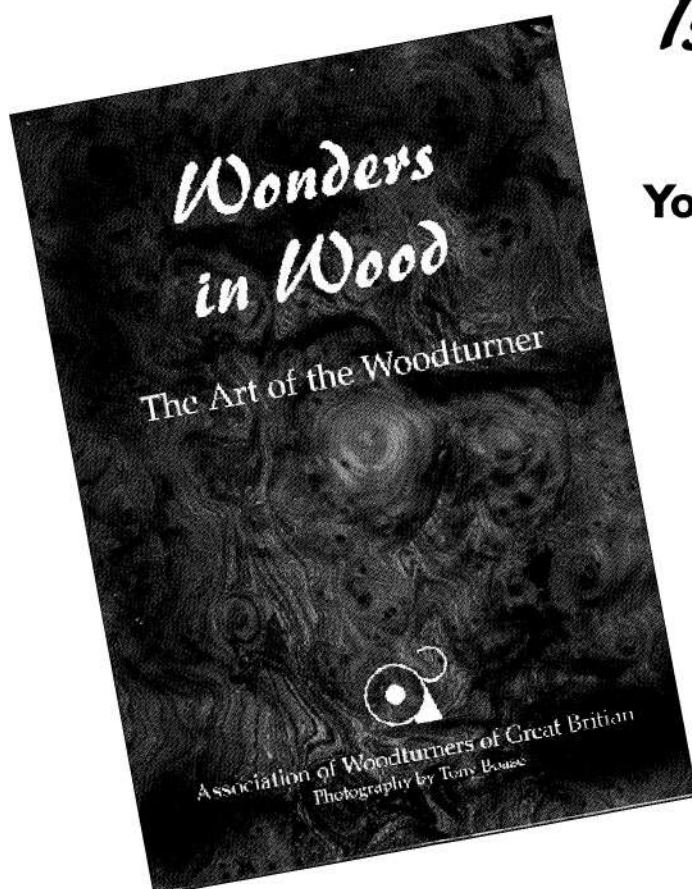
The next show is scheduled for July 10th - 12th 2001 and it is hoped that the competitions will attract a large entry of work to the same high standards of this years event.

Advance notice is given that entry forms for 2001 will be available from March 1st 2001 from :

Yorkshire Agricultural Society  
Yorkshire Showground  
Hookstone Oval  
North Yorkshire  
HG3 2PW Tel. 01423 541000

or

John Boddy's Fine Wood & Tool Store Ltd  
Riverside Sawmills  
Boroughbridge  
North Yorkshire  
YO51 9LJ Tel. 01423 322370



## *Is your turning lacking inspiration?*

**You will find all you need in this book**  
**You can order your book**

- Directly from David Grainger, Laurel Bank, Kirby Thore, Nr Penrith. Cumbria CA10 1XN for £9.95 plus P&P quoting your membership number.
- Members saving on cover price - £2.00.

### **Post and Packaging:**

- UK £2.00
- EU £3.00
- Rest of the world £5.00

Cheques with order made payable to the Association of Woodturners of Great Britain for the full amount, including P&P, quoting your membership number, name and address please.



## Ray's Rant

Dear Mr Wilson

"Ray's Rant" (Getting Involved – To Be or Not To Be, Revolutions, issue 53) actually raises more questions than it answers. Firstly, let me state clearly that I have the utmost respect for Ray Key, and like every woodturner I know, I hold him in the highest possible esteem as the driving force in many aspects of woodturning. It is my view that he has few peers and it is most unlikely that the AWGB would be in existence today had it not been for his drive and determination. So it is easy to understand why he would "go off pop" when the AWGB appear to come under attack, but having read his article, the letter in Woodturning Issue 82, and correspondence in a subsequent issue of Woodturning it is not at all easy to understand why he "went off pop" this time around. I was not at the seminar in August 1999, and read the letters referred to with interest, reaching no conclusions apart from the fact that there appeared to be some sort of mix up at the seminar. Ray's article changed that view.

Ray refers to facts being incorrect and misinformation being published when a simple telephone call could have put the record straight. Sadly, due probably to heavy editing, the explanation of events that he gave raised the following questions, not just in my mind, but in the minds of a number of people with whom I have discussed the matter. The critical factor is this – why did the selectors choose only 22 items initially, when they had been asked to select between 40 and 50? Between them they must have been able to count up to 50 so there has to be another reason. Was it that they felt that the quality of work did not match their selection criteria? Were the initial selection criteria too

tight? Having initially selected less than half the number they finally settled on, what changed their selection process? What were they initially looking for in the submitted work that was not there first time around, but which they subsequently found? How is it that the initial selection became public knowledge – was an announcement made to the effect that 22 items had been chosen? Was a further announcement made to the effect that the selectors were going back to their task and re-thinking their selections? Each question raises several other questions, and it seems that the whole thing was little more than a badly handled PR cock-up.

Reference is made to upset being avoided. Who is upset? Is it the 32 people whose work was not chosen first time around? Was it the 22 whose work was chosen, and then diminished in apparent quality by addition of further 32 pieces that had previously been left out? Is it the selectors who are upset because they had apparently not done their jobs properly? Is it the selectors who are upset because they had indeed done their jobs properly and were subsequently asked to compromise on their standards? Is it members of the various committees who are upset because their joint decisions have met with criticism? Is the Association and its officers beyond criticism? Who exactly is, or was, upset and why?

I am just a humble, two year novice, still struggling with every aspect of turning, and enjoying every moment of it, having at long last found the time, the space and the wherewithal to indulge a long-standing desire. I care as passionately as any other member of the association about woodturning, and the direction that woodturning is general is taking. I would hope to improve my skills to the point where I can submit work to the Association confident in the knowledge that it will be judged against established criteria where the decision of the judging committee is final and beyond question. All that I would expect would be an honest assessment of the work, and if it was found to be wanting, fair enough. Second, third or fourth prize would be accepted as gratefully as a

first. I am not sure that I would be terribly happy about a "consolation" prize.

It was a very impressive Ray Key seminar that prompted me to join the AWGB and I was aware that I was joining an organisation with a membership in the region of 3000 woodturners, each of whom is a highly individual original. To expect all members to sing from the same hymn sheet is expecting a bit too much and there is bound to be dissension in the ranks at some point along the way. Were that not the case it would be a terribly bland and boring Association. An expression of views critical of the AWGB and the Committee in the woodturning press is not a bad thing – labelling criticism in the press as misinformation is. Unless, of course the critique is addressed fully and shown to be wrong. Sadly, "Ray's Rant" has not done so, and has merely clouded the issue further.

Yours sincerely

S Cherry

---

## Meanwhile, back in the kitchen.....

Dear John

May I be permitted a personal view of the points brought to the fore in Ray Key's article in the last edition of Revolutions.

I think it is true to say that any association can be likened to a rich fruit cake, in that it is only as palatable as the sum of it's parts, no matter what the quantity. Every ingredient has a part to play but it is not until they are all mixed together that the true value of the recipe is realised.

It would be nice to think that every member of this association was prepared to add their own few ounces of spices etc. where required.

Yours

Lionel Pringle



## Traveller 1.....

Dear John

Just back, jet lagged, from the USA, visiting a few turning woodnuts. A couple are trying to long range plan a visit to the I+UK, when they scheme to abandon wives in London and escape to our Seminar. I said it was almost certain to be in Warwick, in August, but they pressed me to see if you had advance warning of the likely dates. Are you able to give me a hint yet?

I did get to the AAW Seminar at Charlotte, N.Carolina. Big air-conditioned conference centre, (95°5 F in the street outside), 16 demonstrators simultaneously every 1½ hours. 900 turners plus some ladies. \$28,000 auction for training funds. Instant gallery, highly decorative and stunning display of skills. The trade show was not as good. I think our Seminars tend to be better. Alan Betly and Chris Stat did well.

Good luck with you challenge.

Yours sincerely

Bill Kinsman

*Advance details of the 2001 Seminar, to be held in Loughborough are to be found elsewhere in this issue- Ed.*

## Traveller 2.....

Dear John

During a rather longish holiday spent in New Zealand, I was able to see quite a lot of the simply astounding trees and the very beautiful woods that abound there.

It is no wonder that woodturning is so very popular. While they grow a lot of soft woods commercially the climate makes the straight grain varieties tremendously tall, and mature early for cutting. However, not many of us turn a great deal of soft wood I am sure!

Some of the very ancient woods, which

have lain in swamps for years, are now being recovered and the wood is simply fine. Many of these trees were ancient Kauri when they fell, often better than 400 years old with trunks over 6 feet in diameter. The butt ends being of special beauty as you will guess. While restricted by weight I nevertheless managed to bring some fine pieces home with me.

I write mainly to pass on a most ingenious idea given to me by a woodturner in the Bay of Plenty. When turning, save some of the fine dust from sanding, and keep the little bags separate. Then, when a little stopping is necessary, (it is always quite a problem to match colours), mix some of a similar coloured dust with just enough of any ordinary adhesive to bind it, apply it and let it dry to finish with an almost invisible stopping with no need for further colouring. Maybe everyone else in the world of woodturning knows about this, but it was new to me, and having just tired it out on a set of Lodge candleholders I found it a real success.

From here, as you will guess, it is not often that I can get over to meeting and exhibitions, but we have had visits from some of the best to workshops here, Stuart Mortimer, Reg Sherwin, Phil Irons, (while in New Zealand I visited the Woodcut factory, where Phil gets his favorite tools from), Zach Taylor, and for wood finishing the magic man Brian Barron, and others.

Yours sincerely

Jack Ricketts  
Isle of Man

of the band of happy amateurs!

**Letters to the Editor** intended for publication should be sent to reach John Wilson by the copy deadline of the issue for which it is intended. The copy deadline for the next issue can be found on page 3. Letters may be handwritten, typed or word-processed and sent by post or e-mailed. This last method does help to speed the preparation of the newsletter.

## OBITUARY

### PATRICK BLAKE 1936 – 2000

Patrick lost his 11 month battle with cancer in May of this year. Sadly towards the end he was not able to woodturn but turned to one of his other talents of painting and produced some beautiful water colours.

Pat commenced woodturning in 1988 after a visit to his brother Peter's workshop. This sparked him off and he quickly developed his expertise. He was then inspired by David Elsworth and went on to produce some remarkable hollow form turning.

Pat won the Worshipful Company of Turners Gold Medal for plain turning 3 times and won many prizes in National woodturning exhibitions. He was able to combine his artistic eye with good technical ability.

Pat worked as a Sales Manager, selling farm machinery in his native East Anglia and most of the material for his woodturning was from local timber obtained from his farming friends.

He will be sadly missed by his family and his many woodturning friends. We have lost a rare talent.

### GRAHAM HUGHES

It is with sadness that we also report Graham's sudden death on July 25th. Graham was an inspiration to turners all over the country with his talent on display at many exhibitions.

Graham was a keen member of the Mid-Staffs Woodturners and his many friends will greatly miss his tireless and unstinting activity in woodturning together with his help, teaching and advice, always so freely given to anyone who sought it.

# *So you want to be a Woodturner*

## *Part 6*

By Chuck Turner

### **Boring wood on the lathe.**

#### **What equipment is required?**

A Jacobs chuck will be the first thing to buy. This is a three jaw chuck similar to the chuck on an electric drill bit which is mounted on either No 1, 2 or 3 Morse taper. They are usually used fitted into the tailstock and the drill, when secured, is then wound into the work. During this operation it is important to wind the drill into and out of the workpiece to remove the shavings which can become compacted, just as you would when using a drill press. There are occasions when you may want to drill from the headstock end, but be warned, when inserted into the headstock spindle, if constant pressure cannot be maintained throughout, the Jacobs chuck will work loose, and can fly out with disastrous results. There is on the market a very useful Jacobs Chuck where the end of the Morse taper has an internal thread and a length of threaded bar is provided, with a nut on the end to secure the chuck into any hollow headstock. This enables the easy drilling of handles, and with the use of a small table mounted in the tool rest support, lamp bases can be effectively drilled horizontally for the insertion of the electrical wiring. It can also be used as a chuck for small items.

#### **What Kind of drills can I use on the lathe?**

##### **Brad Point Drills**

are freely available and are specially ground for accurate drilling in wood. I have never tried to sharpen them, a process which could prove difficult, however as they are only used for drilling wood. I have never tried to sharpen them, a process which could prove difficult. However as they are only used for drilling wood there is not likely to be a regular requirement.

##### **Engineering Drills**

mounted on Morse tapers, are usually used when working in metals, and are quite expensive to buy. A good source of these is Boot Fairs where they can often be found on sale for as little as 50p or less. I have acquired all sizes from an 1/8th to 1/2" in this way.

They are very useful for boring wood on the lathe, as they can be mounted straight into the tailstock, and quickly knocked out again, when the job is finished. They can be used at about 800 to 1200 rpm providing attention is given to the removal of the shavings while in use.

##### **Twist Drills**

can be used in the Jacobs chuck, upto the capacity of its jaws, which is usually 1/2". Boring end grain on the lathe (the item would have to be held in a 3 or 4 jawed chuck) there is a distinct advantage, small diameter drills run true, as the grain is revolving round the drill, whereas on a drill press the drill tends to follow the grain. This is particularly noticeable when boring such things as Light pulls. Again removal of the shavings while boring is important, particularly with small diameter drills, which can quickly jam and break.

##### **Flat Bits**

the kind generally used in electric drills can be used, but having a very long point is not very useful when boring on the lathe. When I have used them they have seemed to be rather violent and caused great vibration. I would say there are better methods!

##### **Forstner Bits**

are ideal for Woodturners, and range in size from about 1/4" to 3" they will bore a nearly flat bottomed, accurate hole, with a very shallow point mark at the centre which can be easily removed if required with a scraper.

##### **Saw Tooth Bits**

are similar to Forstner bits but have saw type teeth around the edge as opposed to the Forstner which has a continuous cutting surface, they are made in a similar range of sizes. They should be used at slow speed, to avoid overheating, which could destroy the temper of the cutting edge. Both Forstner and Saw Tooth Bits can be bought in short stem and longer stem versions, individually or in boxed sets. Prices vary considerably and one should shop around carefully. Seconds can sometimes be purchased from some suppliers, and can be quite useful, as it is not often that great accuracy is required when working in wood. When boring large diameter holes with these bits, it is preferable to work in stages using several smaller sizes, in increasing order to relieve the possible stress on the large bit, and decrease the amount of heat generated.

### **Long Hole Boring**

#### **If I want to make table or standard lamps what do I need?**

You will require a long hole boring kit. This usually consists of an Auger about 30 inches long, with a wooden handle. A four Prong Drive Centre / Counterbore, a short, hollow centre with the appropriate Morse taper to fit your own machine, and a Centre Finder and Allen Key.

The four prong Drive Centre has a removable centre pin held in place by an Allen screw which can be undone to allow the pin to be reversed, to present a cylindrical pilot which will fit into the 5/16" hole made by the Auger half way through the process.

The method is, mount the wood on the 4 prong drive with the point in place.

Mount the wood at the tailstock end onto the hollow centre, with the center finder point fixed in place with the grub screw in the hollow centre.

Centralise the wood – Start the lathe on its lowest speed or about 450 rpm, slacken off the grub screw and wind the hollow centre into the revolving wood. Stop the lathe, remove the centre finder pin from the hollow centre and remount the wood on the hollow centre again. Without increasing the speed, the Auger is then passed through the hollow tailstock and will start to remove wood. Progress in short bites of about 1/2" at a time. Paying attention to the removal of the shavings, until the half way stage has been reached.

If the Auger tends to bind or starts to squeal, each time it is pulled out to remove the shavings, it can be rubbed with a block of beeswax to provide lubrication.

When the Auger has bored out to just past the half way mark, the lathe is stopped and the wood must be reversed from head to tailstock.

The pin in the 4 prong drive centre is now removed and reversed, which presents a cylindrical Pilot which will fit into the hole already bored. At the tailstock end the centering of the wood is again carried out as previously described, and boring of the blank completed.

It is preferable to bore out the lamp blank before attempting to do any shaping of the lamp stem. When turning the lamp stem, the Counterbore remains in place, but a running centre can be used to replace the hollow centre.

If it is intended to make a standard lamp, the first section has a spigot turned on the end, the exact size of the head of the Counterbore. When the second section has been bored and shaped the pressure on the tailstock is slackened off and a firm grip established with the left hand on the wood. With the right hand at the tailstock end, the wood is wound gently into the Counterbore, which will bore slowly into the end grain and produce a perfect mortise. A depth of about one

inch should be sufficient but great care should be taken to release the shavings, as when the prongs of the Counterbore get well into the wood there is no way for shavings to escape.

If there is a need to joint sections of the spindle turning, this can be done if a 2 inch long hole is bored in the second section with the Auger and the Counterbore used in the manner as described to produce a mortise. If it is not your intention to produce table or standard lamps in any numbers, and the cost of the Long Hole Boring Kit is therefore not viable, some Woodturning suppliers sell already bored lamp blanks which is a very convenient service.

If your lathe has not got a hollow tailstock there is an Independent long hole boring jig available from most woodturning suppliers which fits into the tool rest holder and used in a similar way.

## Woodturning: A Fresh Approach by Robert Chapman

### Woodturning A Fresh Approach

Order direct  
from author.

£14.95

224 PAGES

Robert Chapman

bowl turning

lidded pots and boxes

Concentrating on the quality of turning designs, this book is written for those wishing to improve their existing skills. The book contains in-depth studies into hollow turning, box making and bowl turning techniques, combining *new ideas with fresh applications*.

Projects are grouped into types, with advice enabling you to tailor each piece to suit your level of skill, whether novice or advanced.

Over 150 examples of the authors work are pictured (in 70 different timbers) throughout the book and its 3 galleries, providing valuable reference and inspiration.

This is a book that no woodturner or collector will want to be without. It is lavishly illustrated with over 400 full colour photographs backed up by clear line drawings.

Post your order to:

93 Park Way, Coxheath, Maidstone, Kent, ME17 4EX

Please send me.....copies of *Woodturning: A Fresh Approach*  
@ £14.95 each. Please add £1.95 P&P per book (\*UK only £3.95 overseas)

☐ I enclose my cheque for £.....payable to Robert Chapman

I authorise you to debit my ☐ Mastercard ☐ Visa for £.....

Acc. no.....

Expiry...../..... Signature.....

Name.....

Address.....

.....

Post code.....Tel.....

Postage Free  
for AWCB  
members



Woodturning: A Fresh Approach has been awarded the  
Certificate of Excellence by the British Crafts Guild.



# Woodworking & Turning

The International  
Exhibition 2000

**NATIONAL EXHIBITION CENTRE - BIRMINGHAM**  
**28th SEPTEMBER - 1st OCTOBER 2000**

The best of UK craftsmen can be watched working this year at the International Woodworking and Turning Exhibition. There is a full programme of Master classes, workshops, demonstrations, displays and advice clinics, plus the opportunity for the visitor to have hands-on experience with a number of national craft organisations. There is plenty to see, plenty to tempt and plenty to learn!

## **SPECIAL PROJECTS**

For example, a special project being launched at the Exhibition is called ONETREE whose aim is to promote the arts and crafts in Britain and the unique beauty and versatility of wood. The project involves a single large oak tree grown at Tatton Park in Cheshire. All parts have been saved, including leaves, small branches and bark, and these together with the seasoned wood will be given to a wide range of professional users of wood across the country. Products will include a variety of outdoor and indoor furniture, woodcarvings, woodturnings, sculpture, jewellery, wood fired ceramics, and even wood smoked foods. The first venue for the exhibition after the initial introduction to the public at the exhibition will be The Royal Botanical Gardens in Edinburgh during the festival of 2001, and it will then travel to Nottingham, Tatton Park, Bristol and the Geffrye Museum in London. The exhibition will trace the life cycle of the tree, and local school children have collected acorns from the tree, which they will grow to saplings to be planted on.

## **BARGAINS GALORE!**

There are also a range of trade stands drawn from a wide spectrum of manufacturers who will offer a variety of special promotions, tools, materials and equipment which provide both the enthusiast and the beginner with the opportunity to compare specifications and prices before making a purchase.

## **MASTER CLASSES**

With seating, audio visual equipment and some of the best demonstrators in the lane, you can take the weight off your feet and enjoy a continuous programme of demonstrations / lectures on turning, carving and routing, with the opportunity to ask questions afterwards.

## **THE DEMONSTRATORS**

Look out also for the craft demonstrations from turning and carving to country crafts by The Association of Woodturners of Great Britain, the British Woodcarvers Association and the Register of Professional Turners. The demonstrators include:

**Ray Key** lives in Bretforton, Worcestershire, and is President of the Association of Woodturners of Great Britain. He has done more than anyone else to raise standards and awareness in turning whether for production or for gallery work. He has written a number of books and has work in a number of major collections such as the Stoke Museum, and The Detroit Institute of Arts. His list of lectures at International seminars is most impressive, as is his work in a number of one man and group exhibitions.

**Stuart Mortimer** in the Guinness Book of Records for turning the worlds largest bowl, is always looking for new twists to his turnings, and his applied decorative techniques on pieces large and small have made him well-known the world over. He is based near Stockbridge, Wiltshire.

**Gary Rance** from Wendover has few rivals for speed and dexterity where production counts. With the fewest cuts and great control his fine designs are for the craft market stand or the richest of clients.

**Ray Jones** is a loud Liverpudlian living in Notty Ash and he is very funny. As a spindle turner he does three things exceptionally well and all at the same time! He simply talks as he teaches as he turns with all the basics never overlooked.

**Mark Hancock** from Bwlch, near Abergovenny Wales, is a young and exciting new turner on the UK scene. He adds a sculpture dimension to his work with simple shapes and hollow forms combined to an elegant effect. He has already won prizes in the Cardiff Bowl Turning Competition, and has received a number of commissions which include a gavel set for presentation to an Army regiment by a retiring C.O.

**Tracy Owen** living in Northwich, Cheshire always has a range of tricks up his sleeve from texturing to deep hollowing. He has also developed various tools which have gone into production, and he uses his ideas to great effect in a wide range of work including bowls, Platters and vases.

**Reg Sherwin** is a regular demonstrator, teacher and write based in Bromsgrove, Birmingham. He is running a clinic at the exhibition to sort out common problems of turning technique and advice on the best ways forward.

**Steve White** from Wolverhampton is a woodcarver with a penchant for working in the round, especially when it is turned. Steve explains how to enhance the plain and simple with motifs and patterns from different cutting edges. In addition to forging and making many of his own tools, he is qualified in furniture restoration and wood finishing.

**Hugh Roberts** living on Anglesey is a chairmaker who continues the country craft traditions and the styles of the old Welsh makers using his pole lathe to work freshly cut and cleft timber. He will also be making rounders bats, dibbers, candle holders and rolling pins.

**Paul Coker** is one of only a few full time professional ornamental turners in Europe. Based in Rothwell, Northamptonshire, Paul is known for making large ornamented pieces from the 17 century turned style to Victorian Gothic revival, although he is also noted for his smaller intricate items such as chess sets. He will be representing the Register of Professional Turners and the Society of Ornamental Turners.

**Bob Neill** often works with platters and turned wars. He is a teacher and pyrographer living in Aston-on-Trent, Derby, who uses colour in addition to the burnt lines of pyrography to decorate and illustrate his work.

**Peter Berry** owes much of his style and approach to many years knife carving his small local characters found in his native county of Yorkshire. Based in Tingley, West Yorkshire, Peter shows how to start carving an easy way without being worried by full life representation or a great many tools. He is also a regular tutor and demonstrator at clubs, rehabilitation programmes for young offenders and at Leeds College of Art and Design where he runs more formal City & Guilds Courses.

## THE WOODTURNING EVENT OF THE YEAR!

*The International*  
**Woodworking & Turning**  
*Exhibition 2000*

**National Exhibition Centre, Birmingham**  
**29th September to 1st October 2000**

### THERE'S LOTS TO SEE AND DO AT THE IWTE:

- \* Demonstrations & Masterclasses to improve your skills
- \* New attractions, including the preview of onetree - a major new touring exhibition
- \* Unbeatable offers on leading brands & specialist supplies
- \* Competition displays including Woodworker of the Year
- \* AWGB turning clinic & display
- \* Turn & Burn - try your hand at pyrography!

**Plus! AWGB members - save 50p per ticket & get a coupon entitling you to 50p off the showguide with advance orders. Book now and save!**

**OPENING HOURS** 10.00hrs-17.30hrs (Fri & Sat)  
10.00hrs-17.00hrs (Sun)

**ADVANCE TICKET HOTLINE: 01858 438897**

\*Please quote code AWGB when ordering

#### TICKET PRICES

Ticket type	On the door	In advance	AWGB member	Number required	£total
One day ticket					
Adult	£7.50	£6.50	£6.00		
Senior citizen/Student*	£5.50	£4.50	£4.00		

Total enclosed \_\_\_\_\_

(Children aged 5-16 inclusive will be admitted free of charge when accompanied by an adult)

\*Please provide proof of student status, e.g. NUS card

☐ I enclose a cheque payable to Nexus Media Limited

Or Please charge my: ☐ Visa ☐ Amex ☐ Mastercard

Card no.

Expiry date

Signature  Date

#### YOUR DETAILS

Title (Mr/Mrs)  First name

Surname

Address

Post/Zip code  Country

Tel  AWGB membership No.

☐ Please tick this box if you do not wish to receive direct mail

Please return your order to:

IWTE Advance Ticket Sales, Tower House, Lathkill Street, Market Harborough, Leicestershire, LE16 9EF

NB: ORDERS MUST BE RECEIVED BY 15th SEPTEMBER 2000 TO GUARANTEE RECEIPT.  
Advance tickets are not refundable

The organisers reserve the right to change attractions from those advertised without notice. This may occasionally be necessary due to circumstances beyond our control.

AWGB

EXCLUSIVE DISCOUNT  
FOR AWGB MEMBERS

**Visit the IWTE webpage at [www.nexuswoodworking.com/exhibition](http://www.nexuswoodworking.com/exhibition).**

NEXUS  
SPECIAL INTERESTS

# Turn Out Your Best

*Nick Hunton, Editor of 'The Woodturner', outlines the changed format of the major woodturning competition to be featured at the NEC woodworking show*

You can't please all of the people all of the time (I think Bob Dylan said that), but nevertheless we have done it. That is, we have decided to change the format of the by now institutionalised woodturning competition at the NEC woodworking show, or to give it its proper name the 'Take Your Turn' competition at The International Woodworking and Turning Exhibition.

But why change the format of a competition that is so well established and that has been largely the same since the show was launched in 1992. Very simply it is the direct result of feedback from turners, both through letters and general rumblings, and, more importantly for us, as the result of a significant fall off in the number of people entering. Changes, it seems, are due.

Putting it all together, and lacking the deep-pocketed generosity of banks who might offer cash prizes in the thousands to attract all-comers, we have had to ask what it is that will encourage more people to participate and contribute some of the superb quality work that is to be seen around, not least at in-house club competitions. Our aim is simple: to draw together work of all levels of skill and with a great diversity of styles and ideas for a display that you can be proud to have contributed to and which others can learn from and enjoy. And, of course, it is our aim through gaining sponsorship from firms like Record and Craft Supplies and offering Medals of Merit to make it worth your while. In fact even for those who do not achieve the higher placings, this year we are undertaking to provide positive feedback on all work

submitted – an area highlighted in the feedback. But please don't be put off the thought of contributing to a national display of turned work; this doesn't mean that work should be at the pinnacle of professional standards in order that others can see how ideas have been explored and developed it simply means that it should be to the best of your ability.

The changes made to the competition are principally to categories. This year it is an open competition with no themes, and gone are the categories for predominantly spindle or faceplate work. But those who said that they were deterred from entering by the fact that the same names always seemed to be amongst the honours should note that there are now two levels of entry; the first is for general enthusiasts with a second 'prestige' class for past winners and professionals. The main aim here is to encourage more turners to take part and not to be put off by thinking there is no chance of attaining Medal status; we also hope that professionals and those who have achieved senior status in the competitions will freely enter their work for a really worthwhile display of fine pieces without equally being deterred by the fact that their work will be up for comparison and comment or feeling slighted if they come off second best. The Medal awards here we hope will also be well received as being of serious value.

Learning from your turning is really part of the overall nature of the competition, and prizes will include not only products from Record Power but also a chance to go on a course with Craft Supplies at their new French holiday course craft centre in

the Arriege region. Stuart Mortimer incidentally has also offered 25 places on a one-day workshop seminar for runners up on a date still to be confirmed.

So take pride in your work, turn out your best and contribute to a display of woodturning with appeal to all at the NEC show (29<sup>th</sup> September to 1<sup>st</sup> October). Don't forget there is an extra discount on advance tickets (booked before 15<sup>th</sup> September) for AWGB members (see elsewhere in this issue), so turn up for a great woodturning event where there is a primary focus on woodturning with a broad range of manufacturers and retailers and a top class line up of demonstrators. These include: Stuart Mortimer, Ray Key, Gary Rance, Ray Jones, Mark Hancock, Tracy Owen, Reg Sherwin, Hugh Roberts plus Paul Coker and Roger Warren-Finding from the Register with the AWGB also featured complete with Clinic and display. Associated workshops are with Bob Neill and the potential of pyrography and turned work and carver Steve White showing what can really be done on work in the round.

---

## Competition Details

**For full details write to:**

Woodturning Challenge  
Competition, Woodworking Titles,  
Nexus House,  
Azalea Drive,  
Swanley, Kent  
BR8 8HY



# News from the Branches

## Mid Wales Woodturners

*John Morgan, the Chairman, reports on the activities of this recently formed branch :-*

I am pleased to report that a new branch has started in Mid Wales. Forty-seven prospective members attended the first meeting in January to form Mid Wales Woodturners.

At our first meeting we had the pleasure of Graham Lovett demonstrating for us. Many of you will know of Graham from his work with West Midlands Branch and as a member of the Executive. Thank you Graham for giving us a good start and for your support in setting up M.W.W.

Our second meeting on 19 March saw us being well entertained and informed on hollow form turning by Mark Hancock. Mark has been described as an up and coming star and one who I am

sure will be asked to shine for M.W.W. again in the future.

On May 14 we were given an interesting and informative talk on bandsaws, lathes and chucks by Derek Pyatt which was particularly appreciated by members new to woodturning. Thank you Derek.

My thanks also go to the members of the Executive Committee who have given their support and encouragement along the way.

M.W.W. are for the first year, meeting bi-monthly on a Sunday afternoon in Llandinum Village Hall. Llandinum is situated on the A470 between Newtown and Llanidloes in Powys.

A.W.G.B. members visiting Mid Wales would be most welcome to attend our meetings.

## Cambridge Woodturners

It is pleasing to be able to record the formation of another new branch. Cambridge Woodturners.

This branch has its meetings scheduled at 7.30 p.m. on the first Thursday of each month. The venue is the Wandlebury School Room.

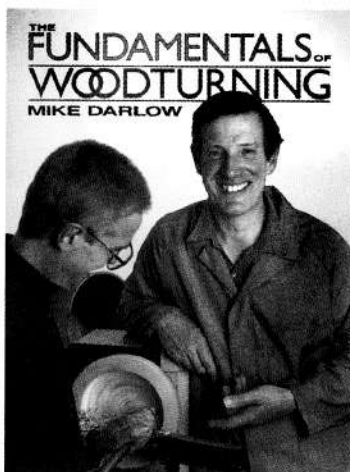
Anyone interested in finding out more about the activities of this new branch should contact Derek Phillips, 15 Greens Road, Cambridge CB4 3EF. Telephone 01223 312134.

Incidentally Derek tells me that originally the branch was scheduling their meetings for another time slot, but this clashed with the local beekeepers - so they had to buzz off!

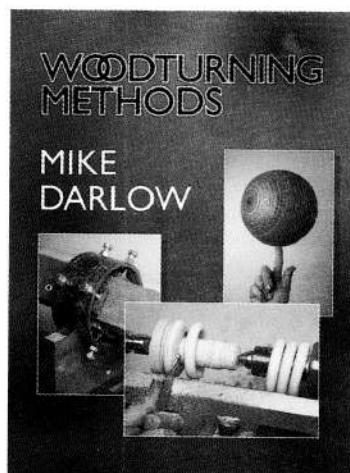
## SPECIAL OFFER FOR *REVOLUTIONS* READERS BUY EITHER BOOK AND HAVE THE OPTION OF BUYING THE SECOND AT ONLY HALF PRICE

### FUNDAMENTALS OF WOODTURNING £19.95

A superb full-colour book covering virtually all you need to excel at this most absorbing craft. Mike Darlow gives up-to-date and comprehensive information on the techniques likely to be encountered in all methods of turning and sound professional advice on current tools and equipment. The book includes a range of turned projects and graded exercises to build up skill levels and confidence. 400 colour illustrations. 200 pages, pbk.



IMMEDIATE DELIVERY FROM STOCK. ORDER BY CREDIT CARD, CHEQUE OR POSTAL ORDER. ADD P&P. £2.20 FOR ONE BOOK OR £3.30 FOR TWO. TEL: 01992 501518



Mike Darlow's new book  
**WOODTURNING METHODS**  
£19.95  
Includes over 400 photographs and drawings in full colour. 200 pages pbk

**Woodturning Methods** guides you through a host of special techniques. Its chapters explore chucking, spindle turning, turning slender spindles, turning spheres, eccentric turning, multi-axis turning, turning ellipses and drilling in the lathe. The methods are clearly explained and the full colour presentation is a real delight. In addition, Mike has searched out old engravings and historical material to give a fuller understanding of woodturning's development and heritage.

ORDERS TO: STOBART DAVIES LTD., PRIORY HOUSE, PRIORY STREET, HERTFORD SG14 1RN

## A W G B    Affiliated    Branches

### AVON & BRISTOL

**Secretary:** Mrs Julie Heryet, 92 Coombe Dale, Sea Mills, Bristol. BS59 2JE 0117 968 3440  
**Meetings:** 3rd thursday of the month 7.30p.m.  
**Venue:** The Huntsman Inn, Westerleigh Road, Downend, Bristol

### BURCOT WOODTURNERS

**Secretary:** John Pearce, 84 Shaw Lane, Stoke Prior, Bromsgrove, Worcestershire, B60 4DX 01527 878369  
**Meetings:** 1st thursday of the month 7.00p.m..  
**Venue:** Burcot Village Hall

### CAMBRIDGE WOODTURNERS

**Secretary:** Derek Phillips, 15 Greens Road, Cambridge, CB4 3EF 01223 312134  
**Meetings:** 1st thursday of the month 7.30p.m.  
**Venue:** Wandlebury School Room

### CHEAM WOODTURNERS ASSOCIATION

**Secretary:** Len Saunderson, 105 Abbotts Road, Cheam, Surrey SM3 9ST. 0181 644-6911 len@mikes.cix.co.uk  
**Meetings:** 3rd thursday of the month 7.30p.m.  
**Venue:** Cheam Methodist Church Hall, Church Hill Road, Cheam

### CHELMER VALLEY WOODTURNERS

**Secretary:** Richard Webb, Rose Lodge, Becking ham Street, Tolleshunt Major, Maldon, Essex, CM9 8LH 01621 860447 richardwebb@bigfoot.com  
**URL Address:** <http://website.lineout.net/~aphairstone/>  
**Meetings:** 3rd monday of the month (exc Bank Holidays) 7.30p.m.  
**Venue:** The Methodist Hall, Moulsham Lodge, Chelmsford

### COLCHESTER WOODTURNERS

**Secretary:** Martin Edgeley, 26 St. Johns Close, Colchester, Essex, CO4 4HP 01206 843562  
**Meetings:** 1st monday of the month 7.30p.m.  
**Venue:** St Johns Church Hall, Ipswich Road, Highwoods, Colchester

### COOMBE ABBEY WOODTURNERS

**Secretary:** Geoff Astin, 24 Rugby Road, Dunchurch, Rugby Warwickshire CV22 6PN 01788 810431 geoffrey.astin@cwcom.net  
**Meetings:** Every sixth saturday afternoon 1.30 - 5.00p.m.  
**Venue:** The Baptist Church, Hinckley Road, Coventry

### CUMBRIA WOODTURNERS ASSOCIATION

**Secretary:** David Grainger, Laurel Bank, Kirby Thore, Nr Penrith, Cumbria, CA10 1XN 01768 361744 woodinwest@care4free.net  
**Meetings:** 3rd saturday of the month  
**Venue:** Varies, contact the secretary for details

### EAST HERTFORDSHIRE

**Secretary:** Don Stewart, 155 Churchgate, Cheshunt, Herts, EN8 9DY 01992 636967  
**Meetings:** 3rd wednesday of the month  
**Venue:** Contact the secretary for details

### EAST SURREY WOODTURNERS

**Secretary:** Peter Miles, 49 Sylvan Way, West Wickham, Kent, BR4 9HA 020 84624918 sylvan.craft@virgin.net  
**URL Address:** [www.surreyweb.org.uk/east\\_surrey\\_woodturners/](http://www.surreyweb.org.uk/east_surrey_woodturners/)  
**Meetings:** Last thursday of the month 7.30p.m.  
**Venue:** The Edgecoombe Centre, Monks Hill, Selsdon

### FURNESS WOODTURNING & WOODCRAFTS ASSOCIATION

**Secretary:** John Taylor, 11 Rusland Drive, Dalton-in-Furness, Cumbria. LA15 8UJ 01229 467030  
**Meetings:** 3rd friday of the month  
**Venue:** Rampside Village Hall

### HEART OF ENGLAND

**Secretary:** Reg Reed, 1 Churchfield, Welford on Avon, Warwickshire CV37 8ES 01789 750221  
**Meetings:** Every sixth friday 7.30p.m.  
**Venue:** The Scout Hut, Tiddington, Stratford-upon -Avon

### HERTS & BEDS

**Secretary:** Mike Sheaf, 51 Hart Hill Lane, Luton, Bedfordshire. LU2 OBA 01582 736382  
**Meetings:** 2nd tuesday of the month 7.30p.m.  
**Venue:** The Cork Room, Adey Fields Centre, Hemel Hempstead

### KENT BRANCH

**Secretary:** Pat Gleadell, 63 Nelson Road, Gillingham, Kent, ME7 4LR 01634 304865 dgleadell@aol.com  
**Meetings:** Contact secretary for details, date and venue varies

### KINGS LYNN WOODTURNERS

**Secretary:** Nigel Hellon, Lacewood, 24 Church Road, Clenchwarton, Kings Lynn, Norfolk PE34 4EA 01553 762939 (Home) 01553 691215 (Work) nigel.hellon@bt.com  
**Meetings:** 2nd wednesday of the month 7.30p.m.  
**Venue:** Clenchwarton Village Hall

### MIDDLESEX WOODTURNERS ASSOCIATION

**Secretary:** Adrian Needham, 114 Slough Road, Datchet, Berkshire SL3 9AF 01753 593771 ajneedham@msn.com  
**URL Address:** [www.harrop.co.uk](http://www.harrop.co.uk)  
**Meetings:** 2nd thursday of the month 7.30p.m.  
**Venue:** The Gaelic Association Club House, Northolt, Middlesex

### MID STAFFS WOODTURNERS ASSOCIATION

**Secretary:** Ted Webster, Keeper's Cottage, Chetwynd Park, Chetwynd, Newport, Shropshire TF10 8AE 01952 820173  
**Meetings:** 1st friday of the month  
**Venue:** The Village Hall, Etching Hill, Rugeley, Staffs

**MID WALES WOODTURNERS**

**Secretary:** John Morgan, 3 Coed y Glyn, Guilsfield, Welshpool, Powys, SY21 9NP 01938 594572  
**Meetings:** A Sunday - contact the secretary for details  
**Venue:** Llandinam Village Hall

**NORFOLK WOODTURNERS SOCIETY**

**Secretary:** Bernard Rose, 63 Belmore Road, ThorpeStAndrew, Norwich, Norfolk. NR7 0PR. 01603 436990  
**Meetings:** Alternate 3rd Wednesday & Thursday of the month  
**Venue:** Fakenham High School or Beetley Village Hall, Nr Dereham, Norfolk

**NORTH LONDON WOODTURNERS GROUP**

**Secretary:** Jeremy Eckstin, 7 Chandos Avenue, London, N20 9ED 0208 445 5528  
**Meetings:** 2nd Thursday of the month  
**Venue:** Varies, contact the secretary for details

**PLYMOUTH WOODTURNERS**

**Secretary:** Carol Robb, 3 Tor View, Princetown, Devon, PL20 6RN 01822 890641  
**Meetings:** 3rd Friday of the month carolrobb@princetown49.freemove.co.uk  
**Venue:** Methodist Church Hall, Greenway Avenue, Woodford, Plyton, Plymouth

**SCOTSWOOD**

**Secretary:** Colin Grossart 11 Woodlands Drive, Brightons, Falkirk, FK2 0TF 01324 715454  
**Meetings:** Varies, contact the secretary for details

**STAFFORDSHIRE & SOUTH CHESHIRE WOODTURNERS ASSOCIATION**

**Secretary:** Nigel Rickards, 6 Dunnocksfold Road, Alsager, Stoke-on-Trent, ST7 2TJ 01270882420  
**Meetings:** 2nd Thursday of the month  
**Venue:** Senior Citizens Centre, Hanover Street Newcastle-under-Lyme

**SUFFOLK ESSEX CAMBRIDGE BORDERS**

**Secretary:** Brian Partridge, Homeside, Lady Lane, Hadleigh, Suffolk. IP7 6AF 01473 828489 brianpart@aol.com  
**URL Address:** <http://members.aol.com/brianpart/secbhome.html>  
**Meetings:** 2nd Tuesday of the month  
**Venue:** Peter Childs, The Old Hyde, Little Yeldham, Halstead, Essex

**SUFFOLK MID-COASTAL**

**Secretary:** Geoff Moss, 29 Barton Road, Woodbridge, Suffolk. IP12 1JQ 01394 383569 (via)- andrew.galant@breathe.co.uk  
**Meetings:** 1st Thursday of the month  
**Venue:** Dallinghoo Village Hall, Nr Woodbridge, Suffolk

**TAYWOOD WOODTURNERS ASSOCIATION**

**Secretary:** Duncan Donaldson, Smithy House, ( Muirdrum, Carnoostie, Angus DD7 6LE 01241 852854  
**Meetings:** 3rd Saturday of the month  
**Venue:** Varies, contact the secretary for details

**THAMESIDE WOODTURNERS ASSOCIATION**

**Secretary:** Wally Hammond, 44 Casledon Road, Wickford, Essex. SS12 0EL 01268 734881 AHam287771@aol.com  
**Meetings:** 2nd Thursday of the month  
**Venue:** The Fold, Laindon Road, Billericay, Essex

**THE VILLAGE TURNERS**

**Secretary:** Tony Plumstead, 3 School Lane, Bretton, Peterborough. Cambridgeshire PE3 9FS 01733 263202  
**Meetings:** 1st Saturday of the month  
**Venue:** 103 Garton End Road, Peterborough

**WAVENEY & DISTRICT WOODTURNERS**

**Secretary:** Ronnie Summons, 303 Oulton Road North, Lowestoft, Suffolk, NR32 4QZ 01502 584347  
**Meetings:** 2nd Thursday of the month 7.00p.m.  
**Venue:** Mutford Community Centre, Mill Road, Mutford

**WEST CUMBRIA**

**Secretary:** Enid Winterbottom, 23 Hycemoore Way, Bootle Station, Cumbria. LA19 5XE 01229 718622  
**Meetings:** 3rd Saturday of the month  
**Venue:** Royal British Legion, Greta Broughton, Cockermouth

**WEST MIDLANDS**

**Secretary:** Phil Stevenson, 1 Willoughby Drive, Solihull, West Midlands, B91 3GB 0121 705 9794 phil@stevenson20.freemove.co.uk  
**URL Address:** [www.stevenson20.freemove.co.uk/awgb/](http://www.stevenson20.freemove.co.uk/awgb/)  
**Meetings:** Every six weeks  
**Venue:** Water Orton Primary School, Vicarage Lane, Water Orton, Birmingham, West Midlands

**WEST NORTHANTS WOODTURNERS**

**Chairman:** Roy Darlston, 12 Avery Close, Lutterworth, Leicestershire, LE17 4PX 01455 554296  
**Meetings:** 1st Monday & 3rd Wednesday of the month  
**Venue:** The Village Hall, Watford Village, Northants (rear of Watford Gap services, reached via A5)

**WEST SUFFOLK WOODTURNING CLUB**

**Secretary:** Bill Care, Stonham Barns, StonhamAspal, Stowmarket, Suffolk, IP14 6AT 01449 711999 bill@bcare.co.uk  
**Meetings:** 3rd Tuesday of the month  
**Venue:** Earl Stonham Village Hall

**WORCESTERSHIRE WOODTURNERS**

**Secretary:** Kate Price, 169 Birmingham Road, Kidderminster, Worcestershire DY10 2SJ 01562 741484  
**Meetings:** 1st and 3rd Mondays of the month  
**Venue:** Droitwich High School, Briar Mill, Droitwich, Worcestershire

**IMPORTANT**

We try to ensure the accuracy of branch information and rely on you telling us.  
 Please advise Tony Witham, contact details on page 3, of any changes, errors or omissions in the Branch Listing