



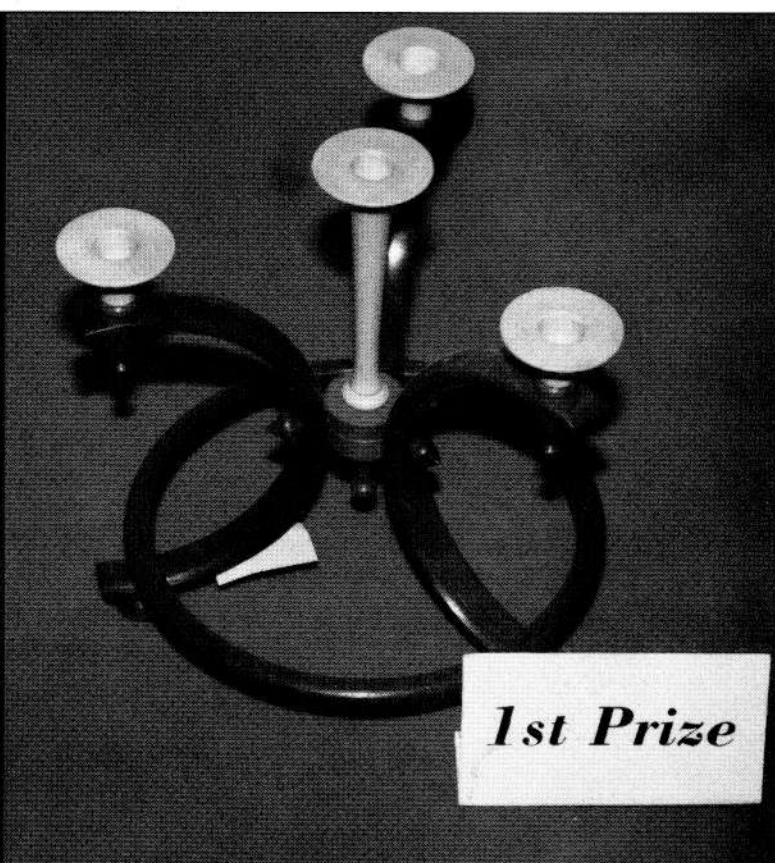
Revolutions

THE NEWSLETTER OF THE ASSOCIATION OF WOODTURNERS OF GREAT BRITAIN

Issue No 43

£1.95 Free to members

November 1997





Chairmans Page(s)

This issue of 'Revolutions' comes to you at the time of year when most of you have cut back on your outdoor activities and started woodturning in earnest again. Sheds and garages up and down the land are a hive of activity, filled with dust, shavings, curses, plus hopefully master pieces. But most of all there is an honest creative endeavour. The enjoyment of making something with your hands is something that the modern work place denies so many and woodturning often fills this void.

Change

These notes come at a time in the lead up to the AGM on April 5th 1998.

Nominations are called for officer and committee positions as the notification document tells you. One thing is for certain there will be more changes than at any time in the AWGB's history in the Officer positions. Our ever present Treasurer Len Grantham is standing down, as is Frank Clarke and your Chairman i.e. me. In April we will have a new Chairman, Vice Chairman and Treasurer for certain, plus new committee members. We are lucky to have at this time members willing to stand for the office of Chairman, Treasurer, and Secretary. I trust that nominations will be forthcoming for the other committee positions.

One change already put in place is that Derek Phillips has taken on the Membership Secretaries job. Peter Einig as you know has been both Secretary and Membership Secretary for some time now. Your committee has been telling him for some time that through the AWGB's growth that handling both jobs is too much for one person. At last he has admitted it.

Subscriptions

These remain the same for 1998 despite the voted increase at the 1997 AGM. We have been able to do this through good management, and increased membership, at £12.50 you have a bargain. The odd member challenged us why we called for an increase to £15, quoting our account reserve, what they failed to note was that for the last two years we had a deficit of around £3000 per annum, you cannot go on like that for long. In the ten and a half years this organisation has been operating there has been only one subscription increase, not many organisations can claim that.

Internet

I made a short reference and a few comments on this in my last notes. At the September committee meeting it was decided to purchase our own name and site. I will let Mike Dennis tell you more about it all. What I will say is that we anticipate a cost effective service that will benefit many members, plus contacts and links all allied to woodturning.

Seminar

The residue of this event still continues through the woodworking press, there have been some super reports. The photographic images of the work from our 'Wonders in Wood' Exhibition are now appearing in the press. The 101 selected works were photographed by Tony Boase, with Derek Phillips acting as his studio assistant, the images are wonderful.

I would like to thank those members/delegates who have taken the trouble to write their thanks, also very pleasing were letters from a number of the presenters expressing their thanks for our organisation and the tremendous support and help they received from your committee.

As you know the 101 selected items of work selected by Bert Marsh we hoped would be published as a book, but not for the first time we have been given the come on and then let down by a publisher.

We now have other irons in the fire and are hopeful that a publication will result in the end.

I am pleased to report an upward correction in the money raised at the Banquet Auction to £2463 not (£2207) as you were previously informed. This increase is through a member making a donation saying he would bought if he had been there, a member insisting paying more for items than he bid, and the impromptu donation of a winning raffle prize for auction at the winding up

session. I thank you all for swelling the Education/Special Projects Fund and giving us the capital to help youth and the disabled etc. in some way.

NEC

Just a brief note on this as Graham Lovett has written a full report on the AWGB's involvement in this show. I would just like to add my own thanks to our members who did a tremendous job stewarding the stand.

I should also like to say a BIG thank you to Graham for co-ordinating it all, Graham is one of the quiet men of your committee who can be totally relied upon to get things done. Special mention also to Mike Dennis for providing a completely new set of exhibitor name cards.

NVQ

The NVQ for Woodturning is in being ? but seems to be a best kept secret at this time, it would seem the left hand does not know what the right hand is doing. What I can say is I saw the NVQ level 2 (76pages) & level 3 (156 pages) presented, in July, with a City & Guilds representative in attendance. If you need information I suggest you contact Chris Wilson of City & Guilds and tell him it is linked with Hand Crafted Furniture. What I have unearthed is that there is a 120 hour City & Guilds Certificate in Woodturning in being, number 7802.

If any member knows of a college, tech, night school etc. etc. running either the NVQ or the City & Guild

Continued on Page 4

The Association of Woodturners of Great Britain

Executive Committee

Chairman

Ray Key, The Firs, 53 Weston Road, Bretforton,
Nr Evesham. WR11 5HW
Tel: 01386 830142

Vice Chairman

Chris Lindup, 38 Barry Road, Oldland Common,
Bristol, Avon. BS15 6QY Tel: 01179 325477

Treasurer

Len Grantham, Spindles, Cooper Close,
Poplar Farm, Nettleham, Lincolnshire LN2 2XX
Tel: 01522 595660

Secretary

Peter Einig, Keepers Cottage, Lee, Ellesmere,
Shropshire SY12 9AE Tel: 01691 622715

Trade & Business Liaison

Frank Clarke, 81 Knightwood Crescent, New
Malden, Surrey. KT3 5JP Tel: 0181 942 5463

Membership Secretary

Derek Phillips, 15 Greens Road,
Cambridge. CB4 3EF
Tel: 01223 312134

Newsletter Editor

Mike Dennis, 72 Hawes Close, Northwood,
Middlesex, HA6 1EW Tel: 01923 829844

Exhibitions Co-Ordinator

Eric Ditchfield, 8 Bloomsbury Court, St Lukes
Square, Guildford, Surrey GU1 3NQ
Tel: 01483 454226

Branch Committee Members

Branch Co-ordinator-Scotswood

George Hunter, 3 Dundas Avenue. North
Berwick, East Lothian. EH39 4PS
Tel: 01620 892293

Suffolk, Essex & Cambridge Borders

Tony Witham, 39 Horsey Road, Kirkby-le-Soken,
Frinton-on-Sea, Essex. CO13 0DZ
Tel: 01255 671697

West Midlands

Graham Lovett, 66 Beachcroft Road, Wall Heath,
Kingswinford, West Midlands DY6 0HX
Tel: 01384 277398

Worcestershire

Richard Barnes, 67 Teme Crescent, Droitwich,
Worcestershire. WR9 8UB
Tel: 01527 570128

Contents

Chairmans Page	2
The Association of Woodturners of Great Britain	3
Editorial	4
AGM Notice	5
Warwick '97	6
Wonder in Wood Exhibition	8
Gary Rance in Guernsey	9
Historical Sources for Creative Woodturning	10
How one Branch overcame its own success	11
Good Planning, Good Will, Good Show NEC '97	12
News from the Branches	15
An Appeal to Members	18
The International Woodworking Exhibition	19
The Association Honours its Chairman and Treasurer	20
Good Woodworking Show	22

Articles, letters, tips, adverts etc featured in this Newsletter do not necessarily carry the endorsement of the Association of Woodturners of Great Britain.

DATA PROTECTION ACT

If you object to your name, address and telephone number being held on a computer belonging to the AWGB, then please write to the Secretary.
(Address Opposite)

The following woodturning videos are available for hire to members.

Turning Wood	Richard Raffan
Turning Projects	Richard Raffan
Bowl Turning	Del Stubbs
Hollow Turning	John Jordan
Bowl Turning	John Jordan
Cutting & Sharpening	Chris Stott
Turning Bowls	Chris Stott
Turning Boxes	Chris Stott
Decorative Effects & Colouring	Chris Stott
The Basic Box	Ray Key
The Capsule Box	Ray Key
The Finial Box	Ray Key
A Course on Spindle Turning	Ray Jones
Elliptical Turning	David Springett
Woodturning Wizardry	David Springett
Colouring Wood	Jan Sanders

Slide Packs of the 1989, 1991, 1993 Loughborough International Seminars. - Slide Pack of the Hay-on-Wye exhibition

To hire any one video or one slide pack, Please send 2 cheques one for £5 for one week's hire and one for £30 as a deposit which will be returned on the safe return of the video or slide pack.

Please make both cheques payable to AWGB.

Application for hire should be made to: George Hunter (Address Opposite)

AWGB LAPEL BADGES

(Brass & Enamel)

Send Cheque etc, to:

Frank Clarke (Address Opposite)

COST £2.50 inclusive of post and packing

MAKE ALL PAYMENTS TO AWGB

**Copy deadline for the next edition of
Revolutions
10th January 1998**

course, please let our secretary know. Information on this is vital if these courses are to flourish.

In Brief

Handbook:

I trust all members will appreciate this it is as up to date as possible at this time. New members have been receiving this on joining this year now the updated version is being sent to you all.

Commissions/ Demonstrations/Tuition

The unselected lists of members who offer any of the above services have just been updated, if you missed the call or forgot to send back your form contact Graham Lovett **Now**.

Good Woodworking Show

I hope some of our members will enter the competitions and run off with the prizes. I trust members will appreciate the special AWGB member ticket offer.

Wembley Show 1998

(Subject to confirmation)

We thought it time that we did something for charity once again as it affords an opportunity for all our members to get involved. In the past we have had a tremendous and generous response from you when we have undertaken such events. More details else where in 'Revolutions'

Craft Supplies offer

New AWGB members were offered a **£25** off course voucher and **free** send for catalogue with the last issue of 'Revolutions' we anticipate more member benefit deals with more companies in time.

Show fees

Entry fee discount negotiations for AWGB members at the major woodworking shows are ever ongoing and normally result in a £1.50 saving when pre booked.

Axminster Show

This is your last chance to see the AWGB 101 piece 'Wonders in Wood' Exhibition in the flesh so to speak, after this show the work will be returned to the makers. We have a large 15mt x 3mt stand, along side the work display, we shall also have our clinic. Mike Dennis, Len Grantham and Frank Clarke are in charge with local members stewarding. This show is a must for woodturners as it has the largest number of named turners demonstrating this year. It is a major woodworking show, with a turning bias.

Membership

At the end of 1996 we had a membership of 1728, I said by the end of this year I felt that 2000 was possible, I am delighted to say we are now in excess of that. Now we have to keep you all and find ways of offering you more benefits. We have a sound platform to build on and must continue to go forward.

I will close now what are to be penultimate Chairman's notes and thank you all for your support in so many of the things we have undertaken.

It has been a very busy year as we have celebrated the AWGB's 10th Anniversary.

Ray Key

Editorial

I know I have made mistakes in the past with *Revolutions* but in the last issue I made a real whopper. I left out half of the article from the Worcester Branch. The article has been reprinted in full in this issue.

When I get copy come in I scan it with Optical Character Recognition (OCR) software to save me re-typing it. I have therefore to scan a page at a time and then put the pages together in a word processing package. What I did with this article was to miss out the second page and in my rush to get the copy to the printers I didn't check everything as thoroughly as I should have done. My apologies to the Worcester Branch.

For those who may be interested I have recently added to my computer setup a package from IBM that enables me to dictate letters and articles to the computer and it types them out for me. I hate copy typing!!! and this package has been worth its weight in gold to me.

With this edition of *Revolutions* you should also have an up to date copy of the Members Handbook and a Subscription Renewal form. The handbook is as up to date as the latest information

supplied to the AWGB. As amendments come up they will be produced in *Revolutions* so that you can alter your own copy of the Handbook.

I was most disappointed not to receive any articles on the International Seminar held at Warwick University earlier this year apart from the one from Mary Morgan where I asked her if she would be willing to write something.

Ray reported in his Chairman's notes that he would leave it to me to tell you what is happening with the Internet and the AWGB. At the Committee meeting in September it was agreed that we should register our own domain name. As the name 'woodturners' had not been registered by anybody it was decided that we should 'grab' it before it was taken up by some other organisation. This was done and the domain name 'woodturners.co.uk' has been registered to the Association. The web site is not yet up and running but will be in the near future. The Association is keen to ensure that no personal information about any member or branch is published without their permission. The process of obtaining the approvals is being sought before the web site is published. More on this topic in the next newsletter

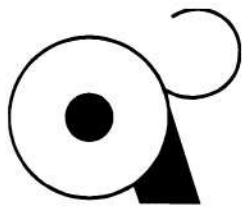
Mike Dennis



*The
Committee
would like
to wish all*



*members a Merry Christmas and a
Happy New Year*



The Association of Woodturners of Great Britain

ANNUAL GENERAL MEETING OF THE ASSOCIATION

Notice is hereby given that the ANNUAL GENERAL MEETING of the ASSOCIATION
will be held at;

BURCOTE VILLAGE HALL, ALCESTER ROAD, BURCOTE, BROMSGROVE, WORCS.

On Sunday April 5th. 1998 and commencing at 2.00pm.

It will be preceded by the
Branch Representatives Annual Meeting which will commence at 11.00am.

THE ANNUAL GENERAL MEETING will follow the usual pattern of Officers Reports and elections, plus any
motions properly presented according to our Constitution.

All Executive Officer posts are for re-election and nominations are requested. These posts are for one year
except for Vice Chairman who is elected to hold office for two years. Nominations are also requested for one
Executive Committee member who will stand for two years.

It is important to note that Ray Key, Len Grantham and Frank Clarke are not seeking re-election.

**MOTIONS AND NOMINATIONS MUST BE IN WRITING AND SUBMITTED TO THE
HONORARY SECRETARY, KEEPER'S COTTAGE, LEE, ELLESMERE, SY12 9AE
BY SATURDAY 10th. JANUARY 1998.**

The Constitution requires that nominations must be accompanied by a fifty word statement from the nominee
outlining their background and their interest in being a Committee Member and be signed by the proposer and
seconder who must be members.

Branch Secretaries are reminded to consult the Branch Rules concerning the voting procedure for the two
posts that are to be filled by Branch Representatives. Nominations for these posts should be received by the
Branch Co-ordinator before 22nd February 1998. The postal ballot will be arranged by the
Branch Co-ordinator and only relates to the voting procedure for the two Branch representative
posts on the Executive Committee.

If any member requires a copy of the Constitution, please send a self addressed and
stamped envelope to the Hon. Secretary.

The Agenda, postal ballot forms (if necessary), and travel directions, will be circulated to you with *Revolutions*
at the beginning of February 1998. We hope that you can attend and look forward to seeing you on the day.

Peter Einig (Honorary Secretary)

WARWICK'97

Reflections from a first time, non- turning delegate

by Mary Morgan

I'm not sure that it isn't a bit cheeky for a non-turner to write about the Warwick seminar, but when Mike Dennis asked me if I would I thought "let's give it a whirl".

We had a good run up to the campus and quickly found our way to the reception foyer. It was good to meet up with friendly faces while collecting our keys and a map. Having settled in our room and eaten a very good lunch it was time to see what was on offer! A quick look at the programme confirmed that the weekend was going to be money well spent, but who would we watch and who would we have to miss?

The afternoon got underway with Ray Key welcoming the delegates and introducing the demonstrators. This was followed by a quick tea break and then into the first session.



Bert Marsh making his selections in the middle of the Wonders in Wood display

Deciding to watch Hans Wiesflog we headed for library 2. I don't have the knowledge to discuss the tools and techniques that Hans used but it was sheer joy to watch the precise and neat cutting away of the timber and to see the box emerge. I spent a few minutes at the beginning of the demonstration

wandering about a piece of paper on the lathe bed that Hans kept fiddling with, then it clicked, he was using it to reflect the light up to the work.

After dinner it was back to the lecture theatre to look at slides from Stoney Lamar and Vic Wood. Stoney's work is certainly very different to any other I had seen, and I still don't really know what I feel about it, but it is good to have a broad mix of styles.

Saturday dawned bright and warm and it was an early breakfast with the first demonstration starting at a 8. 45. Eddie and I decided to watch David Ellsworth turning an enclosed hollow form. David talked us through his technique and explained his use of tools and how he ground them to suit his particular style. All too soon the session came to an end and it was time for coffee. A chance to cool down and compare notes, and then back to the lathe to watch Liverpool's ambassador to foreign parts, Ray Jones, give a demonstration of spindle turning. No chance of 40 winks here - if the Turning didn't keep you on your toes the repartee did. A really great session.

After lunch we took the opportunity to have another look at the Wonder's in Wood exhibition. Thanks to the committee members and others who had worked so hard to display the entries, this was a real pleasure. I certainly didn't envy Bert Marsh his job of selecting 100 items for the touring show, where do you stop?

The afternoon session with Alan Batty was titled Hand Thread Chasing, I felt it should be subtitled "keep your eye on the ball". As we watched Alan turn a circular box with hidden lid, tips, hints and ideas flew as fast as the shavings and all too soon yet another session drew to a



One of the sixteen display units

close. For the last part of the day we had a change of tempo, Neil Bell talking about photography on a budget. Tips and technique were demonstrated and Neil showed that keeping a photographic record of work need not be expensive and that reasonable results could be achieved with fairly basic equipment. I'm always nagging Eddie for not taking pictures so this was a very useful session.



Delegates and Presenters at the auction after the banquet

The evening was marked as a Banquet and Auction, it could quite as easily have been called "An Evening with Len Grantham". He kept us laughing while he took our money in the auction, not a bad technique.



An evening with Len Grantham

grounds for a lesson in Chainsaw use and safety. After a demonstration on what not to do, Simon Keen gave very clear instructions on the right way to go about using and caring for Chainsaws and caring for ones self in the choice of safety clothing etc.

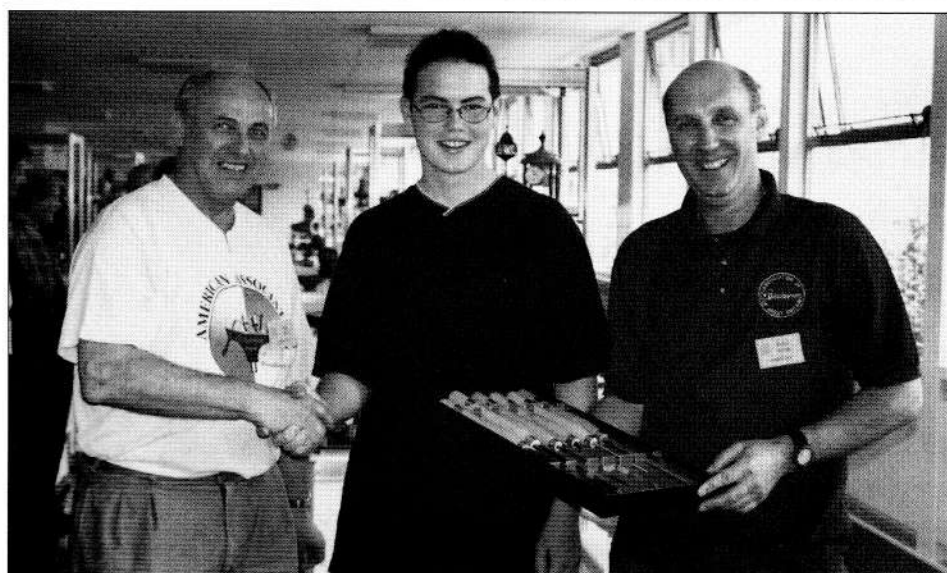
Following this breath of fresh air it was back indoors to watch Vic Wood turn a square edged container. Square edges look dangerous to me, I'm always glad at the end of a demonstration not to see any digits on the floor. In the afternoon we watched Ray Hopper balancing timber for multi-centre turning. Having admired Ray's entry in the exhibition I note that he still has all his fingers.

And suddenly the weekend is all but over. The delegates congregate in the

lecture hall for the closing address and the raffle. I win two of Keith Rowley's books in the raffle and they almost tempt me to pick up a chisel. All that remains then is to drink that last cup of tea and reclaim Eddies exhibits from the exhibition. He bought three pieces to Warwick, one has been sold, one has been selected for the exhibition, one to take home, it has been a very good weekend.

I would not like to guess how many hours work the Committee had to put in to organise the Seminar. I'm sure that there must have been many headaches along the way and so I would like to say a very big thank you to everyone who helped to ensure that we had a weekend to remember.

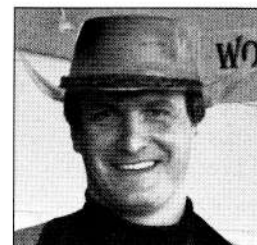
After what seemed a very short night it was time to go again. Out into the



Ray Key and Peter Einig present Ian with the lathe and a set of tools

AWGB supports another youth

Andrew Coleman, sixteen years old, was presented with a Myford ML8 lathe at the Warwick Seminar. The lathe was donated by member Ian Le Page from Guernsey. Andrew also received a set of tools, chuck and drive centre. GMC publications presented Andrew with some books and Phil Irons has kindly offered to give Andrew some lessons in woodturning.



Phil Irons

WONDERS IN WOOD EXHIBITION

Bert Marsh was the Sole selector, he had an onerous task.

He selected 84 UK makers and 17 makers from overseas. These are from seven countries, some are past Seminar presenters, some are AWGB overseas members and some were Seminar delegates.

There were 447 objects on display, with a total value of £55K submitted by some 174 makers

They represented what was the largest and finest display of Woodturning ever seen in this country. Some 400-500 public and AWGB members took the opportunity to view the exhibition. When you add the Seminar delegates, traders, demonstrators and AWGB committee to this, close to 750 people enjoyed what was truly a "Wonders in Wood" exhibition.

Bert chose 101 objects with a value of some £22K. The 101 objects chosen, are not the best 101 that were on display, some makers would have had three to five items chosen if that had been the sole criterion of the selection.

Only one item per maker was selected, this approach means that the broad breadth of the work on display is truly reflected in the selection. From the tiny to bold, from delicate to rugged, from technical excellence to items that are truly works of art. The Craft and Art of Woodturning is truly reflected here, as seen at the AWGB's 6th biennial International Woodturning Seminar at the University of Warwick, August 8th-10th 1997.

The 101 objects chosen went on display at the Birmingham NEC International Woodworking and Turning Exhibition October 3rd-5th and will be on display

at the Axminster Tool & Machinery Exhibition, Royal Bath & West Show Ground November 14th-16th. It is expected that over 20,000 people will have had the opportunity to view the work. These objects have formed a major exhibition focal point at each show.

It is expected to be confirmed in the very near future that a book in full colour will be published of the 101 objects.

Tony Boase has photographed each item wonderfully, and has made no charge to the AWGB for his services, a wonderfully supportive gesture to our organisation.

David Ellsworth USA selected on behalf of the AWGB one item of selector Bert Marsh's work for inclusion in the foreword of the book.

THE FULL LIST OF THOSE WHO HAD WORK CHOSEN

Overseas

Australia
Richard Raffan
Vic Wood
Belgium
Daniel Ellegiers
Canada
Michael Hosaluk
Frank Sudal
Denmark
Merete Larsen
Germany
Hermann Schluter
Bernd Schmidt
Hans Weissflog
Norway
Johannes Rieber
Switzerland
Sigi Angerer
USA
David Ellsworth
John Jordan
Bonnie Klein
Stoney Lamar
Dale Nish
Alan Stirt

United Kingdom

Charles Aldridge
Nick Arnull
David Attwood
Richard Barnes
Allan Batty
S.J. Bear
Patrick Blake
Peter Blake
Rod Bonner
Barrie Brooker
Anthony Bryant
Paul Clare
Ian Clarkson
Brian Clifford
Clifford Coleman
Stephen Cooper
Frederick Cox
Michael Dean
Desmond Dezelsky
Melvyn Firmager
Gordon Fradley
Geoffrey Francis
Bob French
Len Grantham
Nigel Griffin
Dennis Hales
Mark Hancock

Mark Hanvey
Gordon Harp
Stanley Harrison
Albert Harrison
Reg Hawthorne
Alan Hedley
Richard Hooper
Ray Hopper
Paul Howard
Graham Hughes
Phil Irons
Doug Jackman
Ray Jones
Bill Jones
Toby Kaye
Simon Keen
Mac Kemp
Ray Key
Burt Lovell
Graham Lovett
"Lofty" Marshall
Michael Moody
David Moore
Eddie Morgan
Mike Morley
Stuart Mortimer
Chris Mottram-Wooster
Maurice Mullins
Alec Owen

William Pakeman
Ray Patterson
Derek Phillips
Tom Pockley
Ralph Pooley
Lionel Pringle
Gary Rance
Guy Ravine
Reginald Reed
Dave Regester
Keith Rowley
Darrell Rushworth
Mike Scott
Reg Sherwin
Alan Spargo
Jules Tattersall
Russell Thomas
Eric Udall
Elisabeth Van Trierum
David Wardingley
Roy Weare
George White
Don White
Ernest Williams
Tony Witham
David Woodward
Alan Worthington
Rosemary Wright

Gary Rance in Guernsey

by Ian Le Page

I must begin this article with a sincere apology to Gary Rance for not having written to *Revolutions* before now, regarding his visit to Guernsey during 1996.

Gary was recommended as a demonstrator by a friend who lives in the UK mainland and regularly sees Gary "doing his thing" at Isaac Lords.

When first contacting Gary in early 1996 a date was set for a visit at the end of March. After initial discussions, we were informed that Gary would not be travelling alone but accompanied by his minder to help keep him on the straight and narrow when not occupied with Wood Turning. Not knowing quite what to expect, we were delighted to meet a very charming lady called Katrina (Mrs. Rance) whose abilities as a minder turned out to be admirable.

I seem to recall, that when questioned further on this arrangement, comments from both Gary and Katrina such as, "a chance to leave the kids for a few days" and "second honeymoon" started to shed light on the real reasons for their both visiting. Katrina's presence also gave her the chance to see Gary at work for the first time as a demonstrator plus, assist with keeping up the good humoured banter which is usually present amongst turner's.

Our first seminar with Gary was held at the Guernsey Grammar School, the same venue as for Chris Stott's visit the previous

year. This time however we had been allowed, with some arm twisting, to unbolt the lathe from the floor and turn it so that the demonstrator faced his audience. As this occasion is now 18 months ago I cannot remember all the items that Gary made. However I do recall a hanging, pomander, yo-yo, self-winding spinning top and a Banksia nut mushroom as a few of the 20 different items made. Two very interesting day's were had watching someone work with such speed and skill and at the same time share the knowledge with others.

The success of this seminar was such that a suggestion was quickly made for a return visit which was later organised for October.

Our venue for this occasion was St Sampsons Senior School in the North of the island. Whilst the equipment here was much older and well used it was more than compensated for by the enthusiasm of the Head of Crafts to allow us to use his machinery and workshop and to also turn up himself and watch Gary at work. The elevated position of this site with a view down over the sea to the cliffs in the south of the island made it all a very pleasant setting for the weekend.

Numbers attending this seminar were rather disappointing for a number of reasons. Although Guernsey is very densely populated (58, 000 plus folk in 5 square miles) the catchment area for

potential seminar candidates remains limited.

Two particular products of Gary work on this occasion have stuck in my mind. The first a turned cylindrical shaped ring box or jewellery box with an inset ring of corian which makes a wonderful contrast of colours. I was delighted to secure this piece later at the auction which was held. The second piece was even more fascinating and required a small section of elastic band to function correctly. It was the exact positioning of the elastic which was critical, so I was led to believe at the time, no doubt many more folk have been tricked by this little number just as we were!

On the Sunday afternoon it was decided that there would be a hands on session under Gary's watchful eye. This proved to be excellent and the small number of us present meant that everyone "had a go". I would envisage any future seminars held in Guernsey incorporating much more of this type of experience.

Before bringing this much overdue report to a close, I should like to pay tribute to Gary's engineering talents. The bright yellow painted 20 plus year old Graduate, which Gary was using for the demo, had over the years gained a considerable amount of end play in the head-stock bearings and was causing problems. Gary soon set to with a large sledge hammer (sorry, only joking Gary), and carefully adjusted up the slack, leaving the machine running very sweetly once more. This small gesture not only improved Gary's situation but that of the many students who will hopefully use the machine in future years.

A result of the three seminars held so far in Guernsey is that at last we have a dedicated Wood Turning Club, albeit loosely formed at present, meeting on a monthly basis. We look forward to being able to invite professional Turner's to visit us in the future and can assure them of a warm welcome.

Thanks to Gary and Katrina for their company on the social occasions which we had and trust we may meet up again in the not too distant future.



Historical Sources for Creative Woodturning

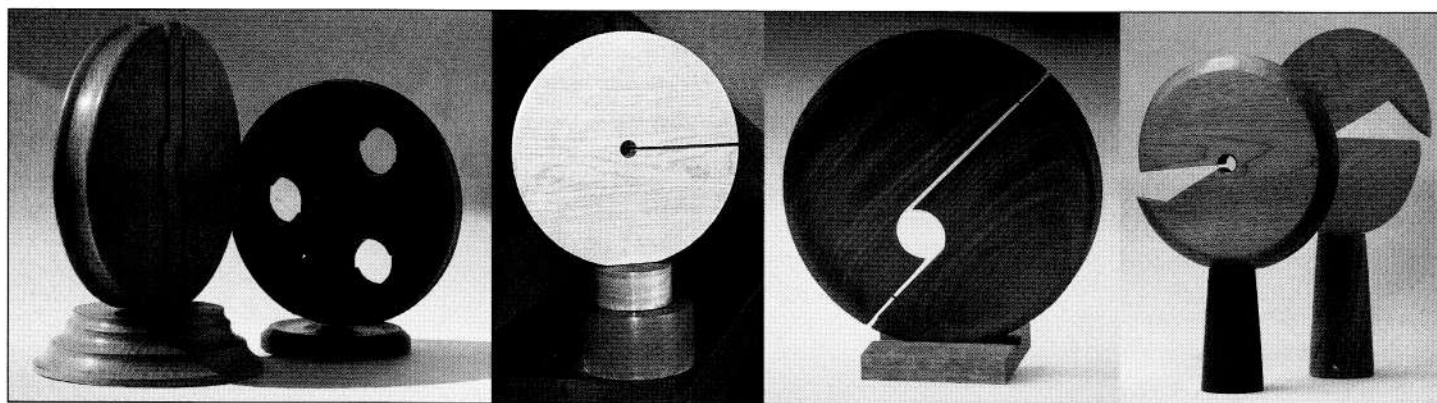
by Professor Daniel Ellegiers

Creativity is a solo flight, a very lonely flight. Everybody has a creative idea, once or twice. Nobody can keep on being creative without new sparks, without new tracks, without sources for new ideas. Everywhere around us there are sources for ideas, but it is not easy to discover them and even more difficult to interpret them into new forms and to fashion them according to our wishes. Moreover, writing these sources, these new found ideas into form is not enough, it needs an intellectual added value. There needs to be something more than just form writing. We must try to add something

biased, one-sided standpoint and their unexpected interpretation of tradition, can mean a better beginning when we are in creative distress. Art Deco, Modern Art, Constructivism, Cubism, Pop Art and so on, all have something useful for woodturners. Of course, we have to make an effort, we have to pull up our socks, because manna does not simply fall out of the sky.

Let us have a closer look at the slogan "Less is more" as to how it can help a woodturner. The author, Mies van der Rohe, was very important in the field of architecture. Around 1930 he bought

With "Less is more" in mind, a woodturner can start to turn a disc, one of the basics of woodturning. Let one cannot turn. A disc, a cylinder are minimum forms. But, of what can we do with such a form? We can, for example, start with a sawcut right to to the centre of the disc. And next we can play with that sawcut in order to reach other forms. The pleasure of woodturning not only lies in the act of turning, but also, and maybe even more so, in the act of designing. A woodturner then not only is turning, but he has also become a drawer, a painter, an artist.



Less is more

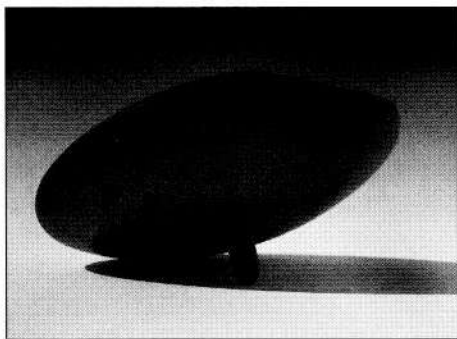
of our own soul, of our own brainwork. When we experience a creative standstill, when we are on the lookout for new ideas, it is the time to investigate into the tracks found by motivated artists in other branches of the Arts and used to solve their problems of creativity. It is there, among other sources, that we Woodturner's can find the sparks which are so important for our brainwork.

Famous slogans such as "Less is more" or "Form follows function" can be very useful for woodturners and if we give these slogans a new dimension, a Woodturner's look, it can lead to a new way of writing form. Modern styles such as Memphis or Alchemia, with their

space and form back to simple and pure lines, away from, for example, Victorian pompousness or the abundance of decoration of Art Nouveau. In order to exemplify his vision with vigour, and in order to explain it intelligibly, he launched the axiom "Less is more", in other words simplicity means an added value. Woodturners can experiment with this idea, without therefore having to adhere to or except all the ideas of the Bauhaus. The first thing to do is to try to free oneself from the traditional themes of woodturning. A lathe is not exclusively a machine to turn balusters, table legs, bowls or boxes. A lathe is no more than an instrument, at the disposal of creative people.

And so doing, the axiom of Mies van der Rohe becomes a jumping board, a source for creative woodturning, however, we must keep the critique of Paul Venturi against the theory of Mies in mind: "Less is a bore".

Since the French revolution in 1789, artists experienced a creative crisis. The necessity to paint or sculpture Saints, Kings or Nobles dwindled. There was but little need to build new churches. The need to paint nature was gradually undermined by the invention of photography. Nothing much was left but to reflect on the medium of artists such as painters, sculptures, architects, ebenists, etc.: space, colour, material, form etc. Many artists have done so,



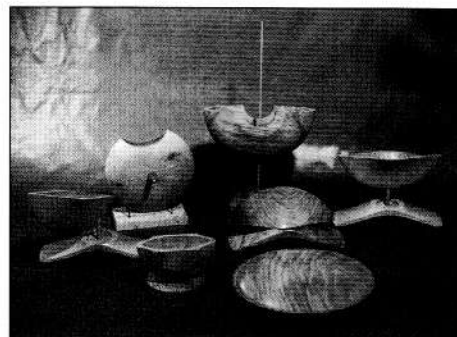
Form creates function

with different results. The consequence of all this mental upheaval was an intellectual explosion of many controversial theories. In these theories many treasures for woodturning are hidden such as the slogan "Form follows function" by the architect Louis Sullivan.

This time let us turn a dish. That dish must be turned so that it can contain something. The dish cannot be turned in the form of a bell, because a bell is not a container. So, form has to adapt itself to the required function.

When we reflect further upon this slogan, it contains additional possibilities. Form does not only result in function, but form can also create another form. For example, let us turn two identical dishes and let us glue these together. If we cut out an opening, we obtain a kind of a vase, a new form, a new function, which is totally different from the original dish.

Logically, we can come to still another conclusion: form can create function. We start again from our dish. This time we saw a part out in the middle. Let us glue the two outer parts together. The left over middle piece can serve as a foot. A new form and a new function has been born. And so we can endlessly go on and on.



Form follows function

How one Branch overcame its own success

By Gerald Jones

Since its foundation about ten years ago Worcestershire Woodturners has developed very considerably. Then meetings were held in members' houses, but as the numbers grew this was followed by parish rooms, a craft centre and a community centre. Three years ago we had the good fortune to be offered the woodwork centre of Droitwich High School. We have had nothing but kindness and help from the Head Master and staff, and were able to buy and house our own lathe there. Our monthly meetings were increased from one to two and we were now able to stage demonstrations. More recently several of the members have got together and provided closed circuit TV using a video camera operated by the Chairman, Alan Ritchie, and John Millward kindly presented a TV set. This provision is vital as with the increase in the numbers very few would be able to see adequately. A committee is kept hard at it to organise and prepare meetings and a newsletter is produced so that we can remember what has happened. An outstanding feature is the readiness of the members to help. Once a month a project is set and while there is no compulsion a large number of people take part, and a good standard is achieved.

Our President is Reg Sherwin, whose teaching is of great benefit to all, beginners and experienced alike. We know he is well known to other branches and are delighted they should have the benefit of his teaching; provided they promise to send him back! In the last year we have also had excellent demonstrations from others, including Hugh O'Neil, Gordon Fradley, Phil Irons, Stephen Cooper and last, but by no means least, Bill Jones. Several of our own members have given high quality lectures and demonstrations, and we have been developing a series of 'hands-on' meetings where no less than four Little Gem lathes are produced and everyone has a go. We may not have

got quite the whole membership fully involved yet but the original shyness is being eroded and it is only a matter of time.

A further development has been the provision of exhibitions. Droitwich Town Council provided a well equipped exhibition hall and one of our members, John Phillips, had been involved there for several years. It was not too difficult a decision to leave him to do the same for us, and most successful has it been. We have had four exhibitions there lasting five or six weeks, also there is a County Crafts show at Worcester and we have been involved in the last three years. On both occasions sales take place, which has also been a successful feature, both for the members and their customers.

One problem that we have not solved is the lack of junior members. We had hoped that our presence in a school might do the trick but so far there has been no great response, but this may well change in time.

Our only great worry has been the ever increasing number of members. From 27 in 1994 it had risen to 50 in 1996, but we held off capping the membership. Now it has reached 75; that is an increase of 50% in one year. Often the attendance at meetings is over 50 and there is concern about safety. This does not appear to be a common problem and the AWGB was not able to advise. Once again a benign Providence smiled on us and Richard Barnes, one of our professional members, is going to set up a new branch at his workshop near Bromsgrove, and it is expected that the two groups will work closely together. There is obviously a long way to go yet, but we have cracked it, and we have not had to send anyone away.

We have been victims of our own success. Long may it continue!

GOOD PLANNING, GOOD WILL, GOOD SHOW - NEC'97

A report from Graham Lovett.

The number one priority for the Association of Woodturners of Great Britain at this year's International Woodworking and Woodturning Show was to display the 101 pieces selected from the Warwick International Seminar to the best advantage. Nexus again organised the show and provided the Association with excellent display facilities surrounding their prime site stand at the front of Hall 10. Liberon generously sponsored the display.

Of course, as many will know, much planning and organising has to go on behind the scenes to get such an event off the ground, but YOUR national committee spent much time and effort to bring the many elements together to present to the public the best display as was possible. In particular, Ray Key spent a lot of time preparing plans of the stand, making numerous 'phone calls, writing letters and sending faxes. Len Grantham, who was to be responsible for the Advice Clinic, had to make the necessary arrangements for a lathe, timber, polish etc. Stewarding arrangements had to be made, all



Part of the 'Wonders in Wood' Display

coming together to set the scene for a memorable display.

Set up day was on Thursday, the day before the Friday opening. At 11am the exhibits arrived with Peter Einig. Len together with Geoff Newman, and yours truly, were assembled and eager to get on with the mammoth task ahead, but... oops!!! the stand was not ready (not too unusual), and the stand equipment, shelves, raised plinth etc., set out in Ray's plan was unavailable, (a little more unusual!!) There then followed much debate and compromising before the set up team eventually got down to the task mid afternoon, and the display was eventually set by "kicking out time" at 7pm.

For the following three days the site had many visitors, who kept the stewards, volunteers from local Branches, busy answering questions, offering advice, and generally promoting the Association and its aims. Many compliments and favourable comments on the display were made by the visitors, and it was agreed that the display of turning was one of the best seen at the NEC. One advantage of the display area was that it was barriered off and enabled the stewards to be within this area, still in contact with the visitors, but not carried away by the sometimes sheer volume of people, which very often happens at unbarriered stands. Another positive aspect of the stand, not realised at first, was a welcoming area, where visitors could purchase merchandise, be signed up, or have a general chat, and more importantly gave the stewards in this particular section time to chat to the many people who wished to know more about the Association and the advantages of being a member.



Derek Phillips answers questions in the advice clinic

Another first for the A.W.G.B. at this type of exhibition was the provision of the Advice Clinic stand some distance away, in another part of the hall, from the display of work. The success of this "divorce" soon became apparent, with Len and his co-clinician, Derek Phillips, being kept busy most of the time over the three days. The Advice Clinic is always an important part of the A.W.G.B. presence at any show, and appreciated by the many who partake of the friendly unbiased advice given.

All in all, with the planning, and the goodwill of many people, NEC 97, (the seventh time for the Association at this venue) can only be described as a most successful event. I must mention, and thank, the following members who in their stewardship promoted the Association to its best advantage:- Don Moore, Dave Wood, Brian Chamberlain, Alix Hood, Geoff Newman, Peter Hemsley, Clive Mutch, Bernard Collins, Alan Hill, Malcolm Sherratt, Alan Jones and Keith Drew, who all made it a pleasure to work with. Thanks too to Ray Key, Len Grantham, and Peter Einig for their support.

I wrote at the end of my first NEC report in 1992, "Would I do it again??" Well, I'm still here !! Next year? who knows!!

A stewards view of the NEC

by Brian Chamberlain

I've just completed a pleasant day out. My legs ache and there is the vestige of a sore throat but the cup of tea next to me is probably the best I've ever tasted. I have met a hundred stimulating people. Ninety nine of whom were interested in turned wood, the odd one out was the wife of a turner and it was ten past five when we met. She asked for a chair, we hadn't got one. There was a great deal of turned wood to show the others.

We were a team of four, plus Graham, very busy being stewards answering questions, volunteering answers, pretending to know how it was done and soaking up the accolades being showered on the 101 turners. We were the volunteers, looking after the best 101 exhibits from the Warwick Seminar which were on show at The International Woodworking and Turning Exhibition at the NEC at the beginning of October.

It was the third best experience of my life. The second being the parachute jump I made for Her Majesty. Being close to and sneaking more than a few close examinations of the individual

pieces was a rare privilege indeed. What skill, what vision and in a couple of exhibits, what bravado some of us who turn wood can aspire to.

My companions were; Graham Lovett, West Midlands Branch (who organised it all), Alix Hood, West Midlands, Alan Hill and Malcom Sherratt both from Staffs and South Cheshire. Their good humour carried the day really. Malcom's retail therapy sessions and the undiluted interest of the public contributed even more to the enjoyment of the day. Alan too had his moments, a lady asked him what alternative ivory was. She had been looking at Bill Jones's delicious chess set. Alan's answer was entirely convincing. He said, as I remember it, was that the ivory came from hand reared elephants who were taught to shed their tusks every couple of years or so. The lady was glad that they didn't have to be shot. What, I wonder, would his explanation have been for pink ivory.

For those of you who haven't seen the exhibition it is well worth making a big effort to go and see it. Most of the exhibits were by your fellow members and their efforts certainly inspired me.



The other side of the 'Wonders in Wood' display

**GOOD NEWS
for all members**

**NO
INCREASE IN
SUBSCRIPTION
RATES**

**Still only £12.50
What a bargain**

Affiliated Branches

AVON & BRISTOL

Secretary: Alan George, 276 Filton Avenue, Horfield, Bristol, BS7 0BA **Telephone:** 01179 697338
Meetings: 3rd Thursday of each month **Time:** 7.30pm **Venue:** The Huntman Inn, Westerleigh Road, Downend, Bristol

CHELMER VALLEY WOODTURNERS

Secretary: J Stock, Latneys, Witham, Essex. CM8 1EB **Telephone:** 01376 520093
Meetings: 1st Monday of Month (Excl Bank Holidays) **Time:** 7.30pm **Venue:** BHP Craftwoods, Mayes Lane, Sandon, Chelmsford

COLCHESTER WOODTURNERS

Secretary: Wendy Thompson, 28 Barker Close, Lawford Dale, Manningtree, Essex. CO11 2JW **Telephone:** 01206 393746
Meetings: 1st Tuesday of each month **Time:** 7.30pm **Venue:** Copford Joinery, Haven Road, The Hythe, Colchester

COOMBE ABBEY WOODTURNERS

Secretary: Roy Nicholls, 23 Hyde Road, Wyken Coventry **Telephone:** 01203 444742
Meetings: Every sixth Saturday afternoon **Venue:** Coombe Abbey Visitors Centre, Coombe Abbey Country Park, Bricklow Road, Coventry.

CUMBRIA WOODTURNERS ASSOCIATION

Secretary: Fred Singleton, 1 Piel View, Gleason, Nr Ulverston, Cumbria. LA12 0QQ **Telephone:** 01229 869550
Meetings: 3rd Saturday of each month **Venue:** Varies - please write for details

EAST HERTFORDSHIRE

Secretary: Nick Bright, 9 Yews Lane, Sawbridgeworth, Herts **Telephone:** 01279 724038
Meetings: Third Wednesday of the month **Venue:** Please write for details

EAST SURREY WOODTURNERS

Secretary: David G Granger, 290 Addington Road, Selsdon, Surrey, CR2 8LF **Telephone:** 0181 657 1895
Meetings: Last Thursday of each month **Time:** 7.30pm **Venue:** The Edgcombe Centre, Monks Hill, Selsdon

GRAMPIAN WOODTURNERS

Secretary: Alan Steele, 168 Jesmond Avenue, Bridge of Don, Aberdeen. AB22 8UL **Telephone:** 01224 822767
Meetings: **Time:** **Venue:**

HEART OF ENGLAND

Secretary: Marilyn Cox, 12 Fields Close, Badsey Evesham Worcestershire WR11 5JN **Telephone:** 01386 830196
Meetings: Every sixth Friday **Time:** 7.30pm **Venue:** Stratford Upon Avon High School, Alcester Road, Stratford Upon Avon, Warks

HERTS & BEDS

Secretary: Mike Sheaf, 51 Hart Hill Road, Luton, Bedfordshire. LU2 0BA **Telephone:** 01582 36382
Meetings: Second Tuesday of each month **Time:** 7.30pm **Venue:** The Cork Room, Adey Fields Centre, Hemel Hempstead.

KENT BRANCH

Secretary: Don Row, 45 West Hill Drive, Dartford, Kent. DA1 3DU **Telephone:** 01322 270807
Meetings: Please write for details as date and location vary.

MIDDLESEX WOODTURNERS ASSOCIATION

Secretary: David Harrop, 68 Burgess Road South, Beaconsfield, Buckinghamshire. HP9 1EJ **Telephone:** 01494 678201
Meetings: 2nd Thursday of each month **Time:** 7.30pm **Venue:** Harlington Community School, Hayes, Middlesex

MID MARCHES WOODTURNERS

Secretary: Paul Balcomb, Bodgers, 5 Caefelyn, Norton, Presteigne, Powys. LD8 2UB **Telephone:** 01544 267010
Meetings: Last Monday of each month **Venue:** Presteigne Memorial Hall

MID - STAFFS WOODTURNERS ASSOCIATION

Secretary: Gordon Fradley, Burtonmeades, Orchard Lane, Hyde Lea, Stafford. ST18 9BB **Telephone:** 01785 247336
Meetings: First Friday of each month **Venue:** The Village Hall, Etching Hill, Rugeley, Staffordshire

NORFOLK WOODTURNERS SOCIETY

Secretary: Bernard Rose, 63 Belmore Road, Thorpe-St-Andrew, Norwich, Norfolk. NR7 0PR. **Telephone:** 01603 36990
Meetings: 3rd Wednesday of each month **Venue:** Fakenham High School or Beetley Village Hall, Nr Dereham, Norfolk

NORTH LONDON WOODTURNERS GROUP

Secretary: Robert Craig, 55 Woodside Park Rd, Finchley, London. N12 8RX **Telephone:** 0181-446 0679
Meetings: Third Thursday of each month **Venue:** Varies - please write for details

SCOTSWOOD

Secretary: George W Hunter, 3 Dundas Avenue, North Berwick, East Lothian, EH39 4PS **Telephone:** 01620 892293
Meetings: Varies - Please telephone for details

SOUTH CHESHIRE & STAFFS

Secretary: Barbara Fishburn, 12 St Leonard's Avenue, Ipstones, Stoke-on-Trent, Staffs. ST10 2 QD **Telephone:** 01538 266468
Meetings: Second Thursday of each month **Venue:** Senior Citizens Centre, Hanover Street, Newcastle-U-Lyme

SUFFOLK ESSEX CAMBRIDGE BORDERS

Secretary: Patrick White, 62 Chapel Hill, Halstead, Essex CO9 1JP **Telephone:**
Meetings: Second Tuesday of each month **Venue:** Peter Childs, The Old Hyde, Little Yeldham, Halstead Essex

SUFFOLK MID-COASTAL

Secretary: Jeff Moss, 29 Barton Road, Woodbridge, Suffolk. IP12 1JQ **Telephone:** 01394 383569
Meetings: First Thursday of each month **Venue:** Village Hall, Marlesford, Suffolk.

THAMESIDE WOODTURNERS ASSOCIATION

Secretary: Alfred Hammond, 44 Casleton Road, Wickford, Essex. SS12 0EL **Telephone:** 10268 734881
Meetings: Second Wednesday of each month **Venue:** Ridley Studios, 27 Leigh Road, Leigh-on-Sea, Essex

THE VILLAGE TURNERS

Secretary: John P. Cranna, 5 Stoke Hill, Oundle, Peterborough. PE8 4BH **Telephone:** 01832 273377
Meetings: 1st Saturday of each month **Venue:** 103 Garton End Road, Peterborough

WEST CUMBRIA

Secretary: Geoff Robinson 2 Countess Road, Bransty, Whitehaven, Cumbria. CA28 6BS **Telephone:** 01946 691803

WEST MIDLANDS

Secretary: Graham Lovett, 66 Beachcroft Road, Wall Heath, Kings Winford, West Midlands. DY6 OHX **Telephone:** 0138477398
Meetings: Every 6 weeks. **Venue:** Water Orton Primary School, Vicarage Lane, Water Orton, Birmingham, West Midlands

WEST NORTHANTS WOODTURNERS

Secretary: Malc Hill, 2 Kings Green, Priorys Park, Daventry, Northamptonshire. NN11 4UB **Telephone:** 01327 872982
Meetings: Please contact the Secretary **Venue:** Long Buckby Village Hall

WORCESTERSHIRE WOODTURNERS

Secretary: Ms Kathleen Price, 169 Birmingham Road, Kidderminster, Worcestershire. DY10 2SJ **Telephone:** 01562 741484
Meetings: Please contact the Secretary **Venue:** Droitwich High School, Ombersley Road, Droitwich, Worcestershire

News from the Branches

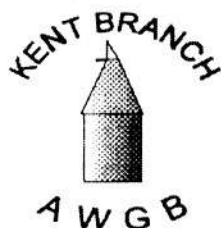


After a spell in hospital and a holiday I missed the last issue so I have much to write about. Summer is our "high season" in that our premises are not the easiest to keep warm in the cold season so we try to organise all our demonstrations during the summer months. It has been probably our best season so far and it started off with a demonstration from Robert Sorby covering all aspects of tool manufacture, use and handling and an introduction to their new range of tools to make all things easy, from roughing a piece of timber to turning spirals. Four o'clock came and we still had a full house, a tribute to our demonstrator. For our June outing we organised an outing to Ashley Isles (we are tool crazy in this part of the world) and enjoyed the preamble from Tony and the tour of the factory. It was interesting to see the input from a family member at every stage of the production and it is this personal touch that ensures that they remain as one of the top tool manufactures in the world. On leaving the factory we adjourned to the local pub, also in the family, for lunch and enjoyed a look round the adjoining antique tool shop where some members spent their hard earned cash. All in all a fascinating day.

June saw us really into the swing of things with an eagerly awaited visit from Keith Rowley. From a personal point of view I learnt more about the correct way to use tools in four hours than I have learnt in five years. As wood turners we are fortunate to have in this country craftsmen who not only produce perfect work but have the ability to pass on to others their knowledge learnt over many years. Keith is one of those people as is our last demonstrator of the season Len Grantham. Being in hospital in September when he came I missed his demonstration but by all accounts it

was not to be missed. All this activity has encouraged new members and has woken up some of our older members to the need to promote ourselves and the craft more vigorously so we have hired the shop at the district library for a week in November to promote the group and display our work. All items on display will be for sale but that is not the primary aim of the exercise. Hopefully we shall generate interest amongst the public at large and they may learn to appreciate some of the skills required to produce a simple bowl of fine proportions. I shall report in the next issue on the success or failure of our venture.

John Cranna



Having missed a report for the last issue of *Revolutions*, with my wrapped knuckles now recovered. I put pen to paper to report the activities of the branch over the last six months.

The Turning Point Annual Competition held at British Gates, Biddenden in early April resulted in four of our members ;Brian Burgess, Dennis Hill, Denis Heyer and Don Cross receiving awards.

Trevor Dawes, one of the Branches founder members, who took up wood turning after being made redundant was the demonstrator for the April meeting. Trevor who along with his wife Eileen are regular participants at Craft Fairs, proceeded to demonstrate his skills in producing items that sell well at these fairs.

" A lecture on Dust Hazards" conjures up in most peoples minds a rather boring evening, except of course when it is given by Tiny Gordon(Racal), whose visit to the branch in May

proved that, given the right approach and presentation, such important matters can be made interesting. It has certainly increased the members awareness of such hazards.

June saw five members demonstrate at " Craft in Action" an event sponsored by the KCC. Adult Education Service held at the Victoria Centre at Gravesend.

A visit to STAMCO's factory at St. Leonards, E. Sussex in July was at the invitation of Michael Deane who had visited us at the Apple Craft Centre in February. Michael demonstrated using the large Appollo lathe and conducted a tour of the factory.

At the end of July Bob and Ann Phillips, who where on a tour from their home in Nelson, a town situated in the tourist area on the northern shore of New Zealand's South Island gave us an illustrated talk showing the type and variety of the work they produce. Attached to their work shop is a Gallery in which they are able to display and sell their work. Members were surprised at the prices they where able to command for their work. Both stressed the need for good publicity and stated that on returning home they anticipated at least three interviews on local TV channels. Presentation was also important, individual boxes and after care polishes or oils where provided with each sale.

The first weekend in August saw us once again demonstrating, this time at the Museum of Kent Life's Open weekend at Cobtree Manor. An event likely to become a regular fixture in the branch calender

In September Stuart Mortimer gave us one of his highly acclaimed demonstrations of decorating wood turning with a variety of twists. Stuart's skill with his hands are coupled with a turn of phrase to match. Stuart also brought along a superb mini exhibition of his work for display

Interspersed with the above the Branches informal meetings have continued to prove very popular and the decision to introduce a theme to each has given them more direction.

D. Row, Branch Secretary



How quickly times change. As soon as we equip ourselves with an overhead mirror for demonstration purposes, along comes a club member with his video camera and our demonstration days and evenings are transformed with close up action shots via closed circuit TV with a colour monitor provided by another club member. A big thank you to Ray Lawrence and George Reade.

Despite holidays being taken through the summer months, the club has maintained an active programme and new members have been welcomed into the fraternity. We bought a new club lathe in April which is being put to good use by visitors and club members alike.

We now have a "New Members' Handbook" which welcomes new members gives details of our Association together with that of the AWGB. The handbook includes the Club Rules and Constitution and hopefully sets the organisation on a firm footing.

Demonstrations have been varied and all well received. John Hopwood demonstrated segmental turning by producing a fine goblet from a glued assembly of contrasting blocks and sandwiched veneers. Tracy Owen gave us one of his first [if not the first] demonstrations his new texturing tool applied to sycamore bowls, and the spirals which can be produced on cylinders.

Our own Alex Evans and Bob Mortimer gave us two unique spindle turning

demonstrations in July and August which were followed by a "hands on" evening for club members in September. Here Ron Dixon showed us some of the secrets of successful saw sharpening, Doug Birch demonstrated a new ball turning jig which he had perfected and Gordon Fradley assisted one or two club members in the application and use of some new tools with which they were experiencing some difficulties.

Alan Hewitt caught our attention in October and had us engrossed and concentrating on the finer details of lace bobbin manufacture and to end the year we look forward to a presentation from Dr. Peter Thomas of Keele University on "Wood structures -identification - and Anatomy of the Tree" in November.

November also brings us our next full day presentation when we shall once again welcome Keith Rowley. December completes the year with our Christmas party which this time will be dominated by a skittles evening. Hopefully we will partake of some seasonal food - not forgetting the seasonal drink [or two] of course.

Plans for next year are taking shape and our committee is "hard at it" adding to a growing list which includes: A "hands on" evening with a supplier's display of timbers; an evening of "alternative and unique material holding techniques" on the lathe; a pole lathe demonstration; travelling road shows and "turning and decorating boxes". All in all a promising beginning.

Gordon Fradley



**East
Surrey
Woodturners**

With the onset of Autumn, we become aware that 1997 is rapidly drawing to a close and we take the opportunity to look back to see if in any way whether our skills have improved or whether the

interest in our noble craft has expanded. Writing on behalf of East Surrey branch we can boast having reached saturation point as far as membership is concerned, we have had to create a waiting list for potential members. If we had allowed our membership to grow any more our monthly meetings would have been overcrowded, and we would be serving tea for the whole session. Besides we were getting short of chairs at the centre. Nevertheless we have had many interesting events during the year. In July we were visited by Bob and Ann Phillips who convinced us how easy it was to make money from woodturning as long as we did it "Down Under". However, it was good to hear about their experiences and to learn about unfamiliar timbers, we thank both for their work on our behalf. August was a busy month. Three members went to the bi-annual seminar at Warwick. This was followed on the 16th and 17th by our involvement with the Annual Selsdon Woods Country and Forestry Fayre. Each year our presence at the Fayre has become more noticeable. Demonstrations were taking place over the two days this year on four lathes including a pole lathe. There was also our usual display section with items of our work offered for sale. In September, member Harry Leedham directed us through the motions of turning spoons, a method he had picked up in New Zealand. Our demo was in common ash and not Kauri from Down Under. In October a coach outing to NEC was arranged and many of us took advantage of this, returning to Selsdon with a bootful of goodies ranging from Airlite masks to bandsaws. Our occasional Sunday "hands on sessions" are proving to be a huge success. We now look forward to the end of October, when we will expect some magic from Gary Rance. We are also looking ahead to our second open day which will take place on Nov 15th. This was very successful last year and we expect an even bigger response this year details should appear elsewhere in this issue.

Dave Grainger

The Axminster Tool & Machinery Exhibition

14-16 November 1997 Friday - Sunday 10.00am - 5.00pm

The 1997 Axminster Tool & Machinery Exhibition staged, for the first time, at a national venue - The Royal Bath & West Showground, Shepton Mallet, Somerset - will be bigger and better than ever before. A showcase of quality exhibitors offering a wide spectrum of handtools, powertools and machinery. The event should have an appeal for each and every visitor from amateur and professional. With virtually all of our suppliers present, the exhibition must be the ideal opportunity to talk directly to the actual manufacturer for advice and up-to-the-minute information on their product range. A new introduction to our exhibition this year is the inclusion of our extensive range of engineering products from light duty metal turning lathes to heavy duty milling and drilling machines, all set up and on demonstration. Also present will be the leading professional power tool manufacturers (AEG, Bosch, DeWalt, Hitachi and Makita). Each manufacturer is able to demonstrate and show their very latest tools and equipment.

This year's Axminster Tool and Machinery Exhibition is organised to reflect a diverse range of products shown in our 400 page mail order catalogue. A vast range of demonstrations and lectures will be held throughout the day on woodturning (with over 14 nationally known woodturners), general woodworking, metal turning/milling and woodcarving. Special features this year include the much acclaimed AWGB presentation of 100 turned items from leading woodturners throughout the world and the furniture competition - sponsored by Axminster Powertool Centre and Furniture and Cabinetmaking magazine (GMC) - with prizes totalling over £15,000.

Finally there will be many special prices, discounts and offers for the duration of the show so whether your interest be woodworking, woodturning, engineering, building or just a keen home user of tools then a visit the Axminster Tool and Machinery Exhibition in November should not be missed

AXMINSTER
POWER TOOL CENTRE

Ticket hotline

01460 68686

Exhibition Enquiries

01297 33656

Available by telephone on 01460 68686

or by post from:

ATME Tickets Sovereign Exhibition Management,
Bramley House, Combe Wood, Combe St. Nicholas,
Somerset TA20 3NN

Cheques payable to: Sovereign Exhibition
Management

Entrance £3.00

Advance tickets £2.50

For your free copy of our
latest 400 page colour
catalogue telephone

01297 - 34836

As there is working machinery at this event all children under the age of 16 must be accompanied by an adult and supervised at all times

**The Royal Bath & West of England Showground
Shepton Mallet Somerset**

Axminster Power Tool Centre Chard Street Axminster Devon EX13 5DZ Telephone: 01297 33656



East Surrey Woodturners

A branch of the
Association of Woodturners of Great Britain

Open Day

Saturday November 15th 10.00am-4.00pm

Selsdon Baptist Rooms
Addington Road, Selsdon.

Return visit of George White with his famous crowns
Live demonstrations all day: Displays of work by ESW
Sale of craftwork, tools and materials:
Craft Refreshments

See what we do and how it's done

Admission Adult £1.00 Accompanied children Free

"Pay and Display" parking in Selsdon Car Park, (adjacent
to trafElc lights) A unique opportunity to buy something
different for Christmas

Secretary D. G. Grainger 0181-657 1895

FOR SALE

Members may advertise in this column free of charge. It will
not however carry any commercial advertising

Meddings Pedestal Drill - Floor Mounted

Industrial Quality - 1 Phase - 1/2" capacity

Inc Jacobs Chuck

In good working order - £275

Mr D. O. Birch, 38 Pelsall Road, Brownhills, Walsall WS8 7JE
Telephone 01543 360176

Jubilee Lathe - £500

Telephone Dick Mather for details on 01225 891379. Situated
just north of Bath, easy access from J17 or J18 of M4.

Why am I selling? I went to Warwick seminar
and I want to try something bigger

Dust extractors

PJ 2 Bag, 3 HP, Single phase, some ducting,
very powerful, regrettably too large for new workshop
Price £400 - less than half the cost of a new one.

Fercell Wall mounted - 1 1/2 HP motor
Brand New - Open to offers

Tel Don White 01288 331453 (evenings only)



AN APPEAL TO MEMBERS

"TURN OUT" FOR THE R.N.L.I.

In keeping with tradition, from time to time the Association decides that it will support a charity event. In the past we have supported such worthwhile causes as, the Tree Foundation, Guide Dogs for the Blind and the Sue Ryder Foundation. The Committee has decided that at the International Woodworking Exhibition at Wembley next February, that the chosen charity will be the Royal National Lifeboat Institution.

Members are invited to assist the committee in supporting this very worthy cause. Large or small, short or tall, goblets, bowls or candlesticks, whatever you're forte, all pieces are welcomed.

All the items donated will be offered for sale on the A.W.G.B. stand and the proceeds given to the Institution to use in their lifesaving work. Any item of woodturning can be donated, and will be priced by our resident team of experts. Work not sold will be passed to the R.N.L.I. for sale at their fundraising events.

Originally called The Shipwreck Institution, the name was changed to The Royal National Lifeboat Institution in 1854, the oldest lifeboat service in the world, funded then as now entirely by voluntary contributions. It now saves on average four lives each day and assists over three and a half thousand people a year, totaling nearly 130,000 lives saved in its 170 year history. The R.N.L.I. has around 200 lifeboat stations, with about 360 lifeboats on station or in the reserve fleet. These are supported by 2,500 volunteer lifeboatmen and women throughout Britain and Ireland. It costs around 50 million pounds a year to run the Institution, for which they depend entirely on the generosity of its members and the public.

***Please help support this worthy cause -
start turning today.***

***Send your work to Frank Clarke, address on page three,
between 2nd to 13th February 1998.***

Please remember to pack your items securely.

***At the last charity event the AWGB ran, members made 328 items.
We would like to exceed that number for this event***

The International Woodworking Exhibition

The world's Premier Woodworking Showcase

Hall One, Wembley Exhibition Centre, London

Thursday 19th February - Sunday February 22nd 1997

Opening times: 9.30am - 5.30pm daily

Wembley Exhibition Centre is home to the ultimate consumer woodworking show. More high quality trade stands, demonstrations, lectures, free workshops, displays and competition entries than any other show, this is THE exhibition for all woodworkers.

Woodturning Competition

The theme for this competition will be

Items for the Kitchen

The competition is sponsored by Craft Supplies and the Prizes total £2000 of goods from their catalogue

Model Making Competition

If you want to try something different to woodturning why not have a go at making a model lifeboat. The show organisers have followed the AWGB's theme of supporting the RNLI by making the theme of the model making competition 'Make a Lifeboat'.

Prizes for this competition are £600 worth of Bosch tools and £400 of Dremel tools.

For full details of both competitions please refer to the next edition of practical Woodworker

Call the ticket hotline on 01442 244321 and quote code:AWGB or complete the coupon today

Tickets	'On the door'	Advance	AWGB Members	No Req	
Adult	£8.00	£6.50	£6.00	£.....
Senior Citizen	£5.50	£4.00	£3.50	£.....
					Total £.....

Please complete and return this form with a cheque/P.O. made payable to Nexus Special Interests Ltd or fill in your Access/Visa card details below:

Card Number:
Expiry Date:

Name: Mr/Mrs/Miss Initial.....Lastname.....AWGB No.....
Address:.....
.....
.....Postcode.....Tel:.....

**£2 saving
to AWGB
members
only**

All completed forms should be returned to Woodworker Show Advance Tickets,
Nexus House, Boundary Way, Hemel Hempstead, Herts. HP2 7ST
To guarantee receipt of your tickets all orders must be received by January 31st 1998

The Association Honours its Chairman and Treasurer

I could not let the tenth year of the Association go by without reporting this story in the last edition of *Revolutions* for 1997.

At the Banquet on the Saturday night of the International Seminar at Warwick University in August the Association honoured two men who have unstintingly given their all to the Association. One was Ray Key, our Chairman, and the other was Len Grantham, our Treasurer.

Ray was the first Chairman of the Association until 1991 when Tony Waddilove took over the post when he was elected as President of the Association. He relinquished this post in 1993 to take on the role of Vice Chairman. In September of 1994 Tony Waddilove suddenly resigned as Chairman and Ray took over as acting Chairman until the AGM of 1995 when he was elected as Chairman once again. He has held this post since then, but is not seeking re-election in 1998. In recognition of his service to the Association the Committee, without his knowledge, agreed to recognise his invaluable service in the form of a Life Time Membership certificate. It was not possible to produce the certificate prior to the Seminar so Chris Lindup, our Vice Chairman, presented Ray with an IOU written on a table napkin.



Chris Lindup presents Ray with the IOU on a table napkin

Len has been the Treasurer of this Association since its inception in 1987 and although he has tried to relinquish the post for the last two years has not done so because there has not been any nominations to succeed him. Len who cares about the Association agreed, reluctantly to carry on. The situation was eased for him when Peter Einig agreed to take on the membership side of Len's responsibilities in 1995.



Ray Presents Len with the inscribed Platter

Ray presented Len with a Sycamore Platter which he had made. It was inscribed in pyrography by Chistine Witham with the words 'To Len Grantham for outstanding service to the A. W. G. B. 1987 - 97'. He was also presented with a certificate, by Wilson Howie, awarding him with life time membership of the Association.

These two stalwarts have been the backbone of the AWGB since its inception and are going to be sadly missed when they retire in April 1998. Fortunately for the rest of the Committee who are to carry on they will still be available for help and advice. I am sure that all members would like to say THANK YOU to both of them for all of their time, which has been extreme at times, and their devotion to the Association. Without these two men there have been times when the AWGB would have struggled to survive.



Wilson Howie presents Len with his life time membership certificate

DON'T MISS THE GOOD WOODWORKING SHOW 97



Make a date in your diary for the Good Woodworking Show at Alexandra Palace. It opens daily at 10am from 20th-23rd November and is a must for all keen woodworkers.

You'll find a huge range of woodworking supplies to view and put to the test from the likes of Brimarc, Rixon, Shesto, Starkie & Starkie, De Walt, Makita, CMT Tools, Power Tek, Craft Supplies, Record, Ashley Iles and many other top retailers and manufacturers. Plus it's a great opportunity to see what's new and buy the very latest products at the best prices.

FANTASTIC LINE-UP OF DEMONSTRATORS

There's also a fantastic line-up of demonstrators that will be showing off their skills every day, here are just a few:

John Perkins - If you want to have a go at routing or improve your technique then don't miss John's workshop, sponsored by DeWalt and Trend. He's going to be showing you the basics and helping you out with any tricky routing problems. A very popular figure at Good Woodworking 96 John originally trained as an architectural technician before studying furniture making and design. He produces commissioned furniture for many private and commercial clients and writes and designs projects for a wide range of books and magazines.

Ian Wilkie - Ian is not only going to be demonstrating this year he wants you to do some of the work by having a go at miniature woodworking with powered fretsaws. If you're a complete beginner then he'll begin by teaching you how or, for the more experienced, he's going to be giving hints and tips on how to improve your technique.

Steve Hill - Trained in antique restoration on the renowned West Dean course Steve is the man to ask on anything about antiques - how to match colours, making repairs veneer, replicating shapes and moulding, splicing new wood into damaged areas, French polishing and much more.

Tobias Kaye - Tobias Kaye's demonstration is always one of the most popular at the show. The magical transformation of rough lumps of timber into heaps of curly shavings and form of great beauty and interest is always accompanied by the chance to learn from Tobias' deep understanding of the process. The Oneway lathe that Tobias will be using is one of

the Worlds top lathes. The sharpening jigs he will also demonstrate are a new advance in easier tool-grinding. Apart from his usual high standard of skill Tobias will offer an interesting array of projects: Lampshades turned paper thin, Involute spindles with picture-windows, Off centre turning, bowls with fully natural exteriors and other marvels. Don't miss this fantastic demonstration.

Colin Hickman - Colin regularly demonstrates carving and tool sharpening for Ashley Iles and is a very popular attraction at events across the UK. His speciality is carving large and small scale bird carvings.

Reg Slack - A very experienced turner and teacher Reg has hosted seminars on his specialist subject throughout England, Canada and America. He is going to be on hand throughout the show to help you with the basics of wood turning and tool sharpening on the Ashley Iles stand.

Phil Irons - Watch Phil Irons turn amazing hollow forms using Vicmarc lathes on the Brimarc stand. Having had no formal training his work focuses on the more artistic side of turning and has won several awards, notably joint 1st prize at Good Woodworking 96.

Jerry Collett - Cover star of the September '97 issue of Good Woodworking magazine, Jerry is going to be turning on the Brimarc stand. He specialises in turning huge vases in a variety of textured finishes. Jerry is a familiar figure on the wood turning circuit and has won several prizes for his work.

Jamie Wallwin - Craft Supplies Jamie will be solving all your woodworking problems and giving advice on the best tools for the job! He is one of the most experienced woodworking teachers in the country and has taught thousands of enthusiasts at the Craft Supplies residential courses at The Mill in Buxton.

AND MORE,

Plus, the Good Woodworking magazine team will also be on hand throughout the show to answer all your woodworking queries.

You'll also be able to battle it out for the chequered flag in the Miniature Jigsaw Racing, seen for the first time in Britain. In conjunction with Bosch, this event is to celebrate 50 years of the Jigsaw and if you're the fastest driver of the day you could

even win yourself a jigsaw, so we think it'll be well worth going along.

There are other chances to win yourself some new equipment by entering the free prize draws that are always a part of the show. This year, everyone who comes to the show will automatically entered into a competition to win £600 worth of prizes.

AWGB TICKET OFFER

Tickets for the show start at £6.50 for adults but we've negotiated a special ticket discount of £1.50 per ticket off the normal price, so AWGB members ticket prices are as follows; Adults £5.00, Senior Citizens £4.00 and £3.00 for Children (8-14).

You can order tickets by calling the credit card hotline on 01369 708010, not forgetting to quote 'Woodcarvers Association Member' to qualify for your discount. Plus, if you are planning to visit the show in a group then take advantage of our group booking offer of a FREE ticket for every five you order, simply ask for the group rate when booking.

The following companies are offering a discount to AWGB members on production of their membership card

L. H. Turtle 10%
10 Park Street
Croydon
Surrey CR0 1YE
Telephone 0181 688 5513

B. H. P. Woodcrafts 10% - 15%
Rainbows End
Mayes Lane
Sandon
Chelmsford
Essex CM2 7RW
Telephone 01245 227229
Depending on what you buy

Peter Childs 5%
The Old Hyde
Little Yeldham
Halstead
Essex CO9 4QT
Telephone 01787 237291

Dure-Edge 10%
21 Station Road
Woodley
Stockport
SK6 1HN
off FlexbackPLUS
Bandsaw Blades
(Does not apply to any special promotions)

BALUSTER VIDEOS

Ray Jones



A COURSE ON SPINDLE TURNING

The route to fine turned furniture

The title says it all.....

The process of spindle turning explained in five easy stages.

As a master of the art and with 38 years experience as a professional Woodturner! Ray Jones shows the viewer, through a series of exercises, how to produce - and more importantly how to duplicate spindles, legs and columns to the highest standard.

Using the basic shapes of Coves and Beads and the more advanced shapes of Balls, Vase and Tulip, Ray explains how simple techniques and good practices can turn the novice into an expert.

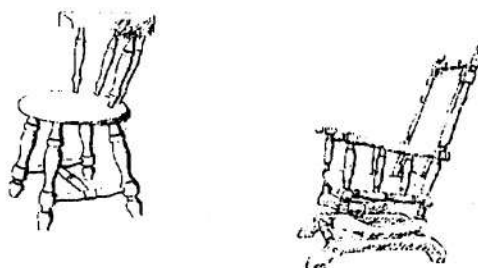
Running Time approx. 3 hours 45 minutes

ONLY £25.00 (inc.postage) TO AWGB MEMBERS

102 High Street, Wavertree, Liverpool

0151-426-2933

0151-228-3587



FED UP TURNING BOWLS?

NEED SOMETHING A LITTLE MORE CHALLENGING?
WANT MORE SATISFACTION FROM YOUR TURNING?

Then try one or both of *Ray Jones* BALUSTER PLANS AND DESIGNS' chairs, guaranteed to stretch you as a turner, but easy enough for even the relatively inexperienced with our pre-cut or pre-cut/pre-drilled kits.

	MinChair/ Plantstand	American Style Child's Rocker
Full size plans (inc. full size templates)	£10.00 +£0.50 P & P	£15.00 +£0.50 P & P
Plan and wood kit (choice of woods)	£22.50 +£5.00 P & P	£47.50 +£7.00 P & P
(Rocker kit is pre-drilled to facilitate construction)		

BALUSTER PLANS & DESIGNS