

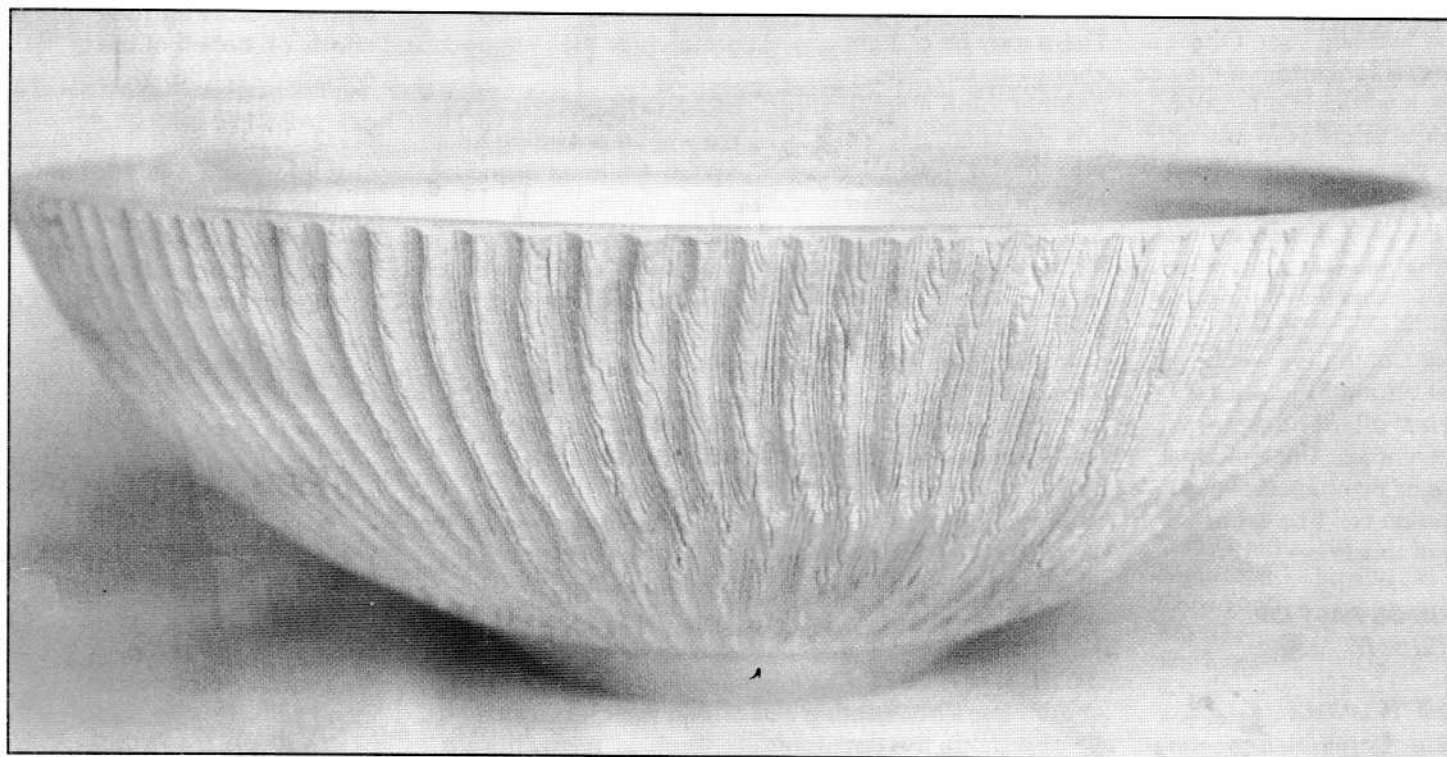


Revolutions

Issue No 40

February 1997

Newsletter of The Association of Woodturners of Great Britain



*Bowl made by Tracy Owen
Winner of the Graduate lathe
at the Good Woodworker Show
at Alexandra Palace*

Story on page 6

Chairmans Page(s)



Happy New Year to you all. This the AWGB's 10th Anniversary Year will be very demanding on your Committee's, time and abilities. If things go as we hope it should also be a very fulfilling year. One thing is for certain if they do not, it will not be through lack of effort from any of us. We are going to need your support as a member of the AWGB to make some of the things we undertake the success we are aiming for.

Your Committee will have met on Jan 19th, this will be just after I have written these notes. This means one or two items on the Agenda can't be reported on at this stage.

THINGS PAST OR CURRENT.

YOUTH LATHE ('s)

At our Committee meeting on Nov 17th we considered the nominations put forward. The first recipient of this new initiative of a 'Lathe Dedicated To Youth' is Gregory Sinclair of Middlesex. He was presented with an Axminster Power Tools M900 lathe, a Bonham chuck from John Boddy's, and tools from Ashley Isles in December (Full report elsewhere). The AWGB would like to thank each of the suppliers for their preferential discounts on these products. These have been purchased from funds raised at the Seminar Auctions.

We also decided to present the Tyme Cub lathe (we have had this for about eight years) to another youngster, Ronnie Head from Surrey, at the AGM. This lathe has been loaned each year with a chuck and set of tools to people of all ages, who we were made aware of who have had a need for a starter lathe. There may be a slight change to this plan, another lathe manufacturer has indicated they will present the AWGB with a lathe, if we dedicated it to our Youth Lathe Loan Plan. If this is confirmed the new lathe will be presented to Ronnie either at Wembley or at the AGM, this will depend on the manufacturer.

The Tyme Cub will then be free to be loaned to any one of any age as in the past. The forgoing explains the reason for the ('s) after lathe.

LATHE LOAN SPECIAL

At our Nov 17th meeting we also made the decision to provide a lathe for a very severely disabled ex-service man. This is an exceptional case. Again the funds raised at the Seminar Auction were used for this provision. Tony Witham read us a heart rendering letter, this was past on to him by Roy Child in the hope the AWGB could do some thing to help. Well we have, a full report will appear in the next issue of 'Revolutions'. Again Axminster Power Tools gave us a very preferential price on a lathe, this time a M950 and a Carlton chuck. (These items were selected for their ease of use). Henry

Taylor's provided a selected set of eight turning tools, Jack Clarke of Rolston Timber twenty eight bowl/platter blanks, Craft Supplies two finishing kits and yours truly threw in a couple of books, bowl blanks and squares. No charge was made for any of these items by the suppliers. We are very grateful for their support.

BRANCH CERTIFICATES

We will be providing all AWGB Affiliated Branches with a framed certificate from the AGM onwards. The design of the certificate and the decision to present, was taken at the November meeting.

NON AFFILIATED WOODTURNING GROUPS

Your Chairman wrote a five page letter/document to thirty six groups in December. These groups are not affiliated to us, although fifteen of them obtain their insurance through us. Many have a considerable number of AWGB members in their ranks. This contact is periodic and ongoing, written in the spirit of goodwill to all of those who turn wood. The AWGB Branch Committee elected representatives make contact with these groups also periodically, to keep the channels of communication open. We now have twenty six fully Affiliated AWGB Branches with fifteen other Groups obtaining their insurance through us. We provide a service in some way or another for forty one woodturning groups out of

the sixty two we know of.

GOOD WOODWORKING SHOW

I have written a full explanation report else where in 'Revolutions'. What I would like to say here is a big thank you to our members who manned our stand and the demonstrators for their efforts on behalf of the AWGB.

NVQ

Our information at this time is: That the awarding partner body CITY & GUILDS are preparing the assessment material in order to submit the award for accreditation by the NVCQ.. There will be more on this in the future.

FUTURE PLANS

WEMBLEY PRACTICAL WOODWORKING SHOW

Dates Feb. 27th - March 2nd.

We shall have our usual stand with a **major display of Members Work**, plus the **Advice Clinic**.

The first two and half days of this event will provide you with your **last chance** to buy tickets for our **Celebration 10th Anniversary Raffle**. The draw will take place on the Saturday afternoon. We shall try to contact the winners and present them with their prizes on the Sunday.

FRENCH SEMINAR

(Full announcement details else where in 'Revolutions') The AWGB was consulted for advice just prior to our meeting in November, I

Continued on Page 4

The Association of Woodturners of Great Britain

Executive Committee

Chairman

Ray Key, The Firs, 53 Weston Road,
Bretforton, Nr Evesham. WR11 5HW
Tel: 01386 830142

Vice Chairman

Chris Lindup, 38 Barry Road,
Oldland Common, Bristol, Avon. BS15 6QY
Tel: 01179 325477

Treasurer

Len Grantham, Spindles, Cooper Close,
Poplar Farm, Nettleham, Lincolnshire LN2 2XX
Tel: 01522 595660

Secretary

Peter Einig, Keepers Cottage, Lee, Ellesmere,
Shropshire SY12 9AE Tel: 01691 622715

Trade & Business Liaison

Frank Clarke, 81 Knightwood Crescent, New
Malden, Surrey. KT3 5JP Tel: 0181 942 5463

Branch Co-Ordinator

Ken Allen, 90 Peakes Road, Etching Hill,
Rugeley, Staffs. WS15 2LX Tel: 01889 570373

Newsletter Editor

Mike Dennis, 72 Hawes Close, Northwood,
Middlesex, HA6 1EW Tel: 01923 829844

Exhibitions Co-Ordinator

Eric Ditchfield, 8 Bloomsbury Court, St Lukes
Square, Guildford, Surrey GU1 3NQ
Tel: 01483 454226

Branch Committee Members

Scotswood

George Hunter, 3 Dundas Avenue.
North Berwick, East Lothian. EH38 4PS
Tel: 01620 892293

Suffolk, Essex & Cambridge Borders

Tony Witham, 39 Horsey Road, Kirkby-le-
Soken, Frinton-on-Sea, Essex. CO13 0DZ
Tel: 01255 671697

West Midlands

Graham Lovett, 66 Beachcroft Road, Wall
Heath, Kingswinford, West Midlands DY6 0HX
Tel: 01384 277398

Worcestershire

Richard Barnes, 67 Teme Crescent, Droitwich,
Worcestershire. WR9 8UB
Tel: 01527 570128

Contents

Chairmans Page	2
The Association of Woodturners of Great Britain	3
Editorial	5
How I made the winning bowl	6
AWGB at Good Woodworking Show	7
6th International Seminar	8
A day out in beautiful Shropshire	12
A woodturning newsgroup on the Internet	13
Selsdon Forest Show	14
Youth lathe loan scheme	15
A weekend with the Wedmore wizard of Woodturning	16
Letter to the Editor	17
Attention all lamp makers	17
News from the Branches	19
Woodturning Seminar in France	22
Controlling dust	23

Articles, letters, tips, adverts etc featured in this Newsletter do not necessarily carry the endorsement of the Association of Woodturners of Great Britain.

DATA PROTECTION ACT

If you object to your name, address and telephone number being held on a computer belonging to the AWGB, then please write to the Secretary. (Address Opposite)

The following woodturning videos are available for hire to members.

Turning Wood	Richard Raffan
Turning Projects	Richard Raffan
Bowl Turning	Del Stubbs
Hollow Turning	John Jordan
Bowl Turning	John Jordan
Cutting & Sharpening	Chris Stott
Turning Bowls	Chris Stott
Turning Boxes	Chris Stott
Decorative Effects & Colouring	Chris Stott
The Basic Box	Ray Key
The Capsule Box	Ray Key
The Finial Box	Ray Key
A Course on Spindle Turning	Ray Jones
Elliptical Turning	David Springett
Woodturning Wizardry	David Springett
Colouring Wood	Jan Sanders

Slide Packs of the 1989, 1991, 1993 Loughborough International Seminars. - Slide Pack of the Hay-on-Wye exhibition

To hire any one video or one slide pack, Please send 2 cheques one for £5 for one week's hire and one for £30 as a deposit which will be returned on the safe return of the video or slide pack.

Please make both cheques payable to AWGB.

Application for hire should be made to: Ken Allen (Address Opposite)

AWGB LAPEL BADGES

(Brass & Enamel)

Send Cheque etc, to:

Frank Clarke (Address Opposite)

COST £2.50 inclusive of post and packing

MAKE ALL PAYMENTS TO AWGB

**Copy deadline for the next edition of
Revolutions
15th April 1997**

made a fleeting reference to it in my last Chairman's Notes. The event now seems to be a true reality and the AWGB looks like playing a major part in its success. We have been seeking written assurances that the AWGB's invited participation will not incur us any financial costs. These assurances have now been received with just the odd 'I' and 'T' needing a final crossing. All being well we will mount a **Major Display/Exhibition of Members Work** and run our **Advice Clinic**. We will be contacting members who we know consistently produce work of high quality to provide the work for our display, very soon. The organiser has indicated that without the sound ongoing consultative advice that Len Grantham has offered, it is doubtful the event would be taking place. The AWGB is getting a bit like the larger advert, except in our case we reach parts of the world no other woodturning organisation does. It looks like being very much a Warwick Seminar in the South of France.

AWGB 10th ANNIVERSARY INTERNATIONAL SEMINAR

The full announcement of this event is featured in this issue of 'Revolutions' we aim to make this the best ever, its not going to be easy, *(as the others have been so good)* we are confident it will be. In due course there will be a number of other demonstrators and special presentations added. This has been our policy in previous years.

SEMINAR EXHIBITION

I outlined these plans in my

last Chairman's Notes. We will soon be giving you the details of how you can participate and attend this event.

TOURING EXHIBITION

We have engaged the services of someone experienced in dealing with and finding sponsors for projects. Our consultant is working for us on a commission basis, no costs will be incurred by the AWGB except when funds are raised. An acceptable commission has been agreed and will be paid from the funds raised. We are under no illusion that it may well be difficult to attract the sort of funding we need to pull off our full plan. We have costed this with a number of options. It would be fair to say £20,000 is our minimum requirement and £40,000 plus our desire. Until you start to investigate these projects, you are not sure of the costs involved, what I can say is they are considerable. To give you an example storage and shipping for two years is around £10,000. If as intended the exhibition toured as a self contained package, e.g. with its own display units etc. this is another £9,500. I can assure you we have had a lot of thoughts and investigated many ideas. Lottery funds can be applied for some aspects of our proposals, but the majority fall outside the funding guidelines. The future of this project is now in the hands of others, we are keeping our fingers and toes crossed for a successful outcome.

AGM

This is now upon us once more, nominations have

again been thin on the ground. At least for the first time in some years we do have a postal vote for one Committee member place. All your Officers have offered themselves for re-election this time and will serve you again as they are unopposed.

You will note there is a motion from your Treasurer to increase Subscriptions for 1998, this increase is badly needed to maintain and expand our level of service to you, so I urge you vote in favour of this motion. Your Committee continues to investigate ways to cut our costs and offer you more, this is not easy but progress is being made. We cut mileage fees to those on AWGB business some time ago, insurance costs have been reduced, advertising revenue increased. We are now taking a very close look at reducing the cost of 'Revolutions' but at the same time making it better. There is no doubt our administration costs always give rise for concern. However there can be no doubt that our communication with the membership is much, much, better. Your Committee will strive to offer each of you as a valued member of the AWGB value for money.

IN BRIEF

Logo

Your Committee is looking at designs for a new Logo. Our present one does not make for easy incorporation into promotional material.

Badges

Production costs have been obtained. Once we have approved a design with the new Logo we expect to be able to offer badges at a reasonable cost. We also expect to be able to offer smocks with the AWGB badge incorporated.

Subscriptions

This is your final reminder and call to renew your subscription. This will be your last issue of 'Revolutions' unless you renew your sub. The cut off date, cost etc. appears elsewhere in 'Revolutions'. Don't Delay Renew Today. Most of the forgoing I trust you will interpret as progressive. I said in one of my missives last year that you have a pro-active Committee. That's how we intend to stay.

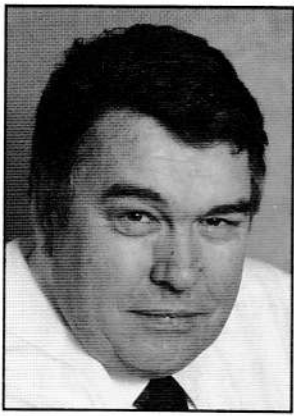
Two items finally to close on, one of great sadness and the other on perception.

Sadness

In November last year we learnt of the sad death of Geoff Cambell the Secretary of the Cumbria Woodturners Association. Geoff will be sadly missed by all those who knew him. He was a tremendous supporter of the AWGB, it was his invitation that I accepted to speak at the CWA's AGM last year. He was a man who made things happen and led from the front. The AWGB's condolences have been sent to his family and the Cumbria Group.

Perception

In the last issue of 'Revolutions' there was an article headed 'Who'd be a Woodturners Partner'. The lady writer commented that the AWGB was formed at Loughborough almost ten years ago, which is true. Going on to give an overview of its values. Towards the end are some very perceptive comments. I quote (***I suggest you give a pat on the back to your partners, who smooth the way to enable you to turn and in particular, a lovely young lady who was there long before most of us knew what a***



I would like to wish you all a very happy new year. An exciting year, I hope, for me personally. As you know I had a few bouts of illness last year and as a result have decided to accept early retirement. This will enable me to devote more time to the AWGB in matters that the Committee may wish me to take on.

I also hope to start some free lance Desk Top

Publishing and design work. If you want some artwork spiced up or designed for your business or organisation please consider me.

In its 10th anniversary year, the association is being pro-active in sharpening up its image. You have already read in the Chairman's notes about the possible changes to the logo. There are also changes, as you can see to the layout of *Revolutions*. This is due partly to get away from the design being the same year on year, but also as part of attempts to modernise our image. I hope you like the changes.

I guess that I will still be appealing for articles for

Editorial

the newsletter and I am aware that all editor's face the same problem. I would like to thank those who have sent articles and make my usual appeal for more articles on practical advice to other members.

I am also pleased at the responses from trade organisations who want to advertise in *Revolutions*. This goes to show that they believe we have a good quality production that reaches a large number of woodturners. Although I have to say that I would not like to see the newsletter getting top heavy with adverts with very little articles of interest.

In the last edition of *Revolutions* I mentioned

that I was considering looking at the use of the Internet to provide the AWGB with some promotional information about its activities. Thank you to all those who have either rang or written to me on the subject. There is an article on this subject elsewhere in this edition.

I have also been busy with editing a video of the 1995 International Seminar at Warwick University. This video will be available from the Branch Co-ordinator shortly and is intended to give a flavour of what these Seminars are all about and perhaps encourage members who have not been to book up.

Mike Dennis

woodturning lathe was. The wife of the Chairman of the AWGB, always cheerful, always beaver away and almost unseen. I feel sure without her support there would not have been an Association). I can only say I fully echo and endorse those perceptive sentiments. Liz's support is ever ongoing, next week she will be hosting the Committee meeting (Jan 19th) providing endless cups of tea and coffee. Plus a full lunch for the gannets that are your Committee and fruit cake prior to their leaving. I think that's all they come for really. Joking apart by and large it is the ladies that who back their husbands that make the AWGB what it is today. To be politically correct I acknowledge partners and husbands who back their wives also.

Ray Key

Have you made that piece for the International Seminar at Warwick University yet?

NO!! Well it is time to start thinking about what you are going to do. Time has a habit of passing by all to quickly. More details will follow in the next edition of *Revolutions*

At the same time consider making a piece for the Bi-annual Competition that the Worshipful Company of Turners holds in conjunction with the AWGB. Details on this event are a bit sketchy at the time of going to press. The details we have so far is that the event will take place in July at The Apothacaries Hall in London. If you are interested in entering a piece for this prestigious event and require more information please contact Peter Einig.

How I made the winning bowl

By Tracy Owen

After taking second place in last year's Good Wordworking 'Turn A Bowl' Competition, it was so pleasing to have won first prize this year. This is the method I used to make my winning piece.

I started with a rough turned sycamore blank. I rough turn all my bowl blanks from green timber and leave them to dry for 6 - 12 months.

Using my short bed graduate lathe and an Axminster chuck, I mounted the bowl blank on the inside recess and cut the outside to an even round shape using a $\frac{3}{4}$ " bowl gouge. Once I was happy with the outside shape I then used dividers to mark a new recess on the bottom for a foot, which would later be reverse chucked and removed. I used a 1" skew chisel for cutting this recess.

With the lathe running I then marked a line about 1" up from the foot. This is where the arbortech work would finish. Putting my arbortech cutter onto a $\frac{1}{2}$ " angle grinder I then started to cut the flutes from the rim to the foot, always from left to right so that the arbortech did not grab and wreck the piece of work. These flutes were cut continuously around the bowl just running into each other. This produced an interesting carved effect. At this stage I mounted a wire wheel into a drill and wire wheeled over the arborteched surface which took away any loose wood and produced a very fine lined carved surface. It was necessary to use an index arm to stop the piece of work from moving whilst using the wire wheel. That completed the outside.

I then mounted the bowl onto the newly cut recess at the foot. Still using my $\frac{3}{4}$ " bowl gouge, I removed the inside, cutting an ogee shaped rim with a wall thickness of $\frac{1}{2}$ ". When about half way down the inside I changed my $\frac{3}{4}$ " gouge for a $\frac{1}{2}$ " gouge with a shorter bevel to cut across the bottom.

The next step was to shear scrape the whole inside surface, using a 1" round nosed scraper with a long grind back. After the shear scraping was complete the surface was left very cleanly cut and only needed sanding (without the use of any sanding sealer) using 2" or 3" power sanding discs, starting with 120 grit, then 180 grit and finally 240 grit, stopping the lathe and checking the finish all the time until I was satisfied with it. I used several coats of Danish Oil cutting back each time with fine wire wool. The last thing to do having reached this stage was to remove the recess which I had cut at the beginning. To do this I mounted a wooden disc with a piece of foam bonded to it in my chuck, putting the inside of the bowl over the foam and bringing up the tailstock to the centre of the recess. I started in the centre with $\frac{1}{4}$ " gauge using a pulling cut until the recess was removed, leaving a small pip in the centre. This was removed off the lathe with a skew chisel and then power sanded to a fine finish. Finally, a few coats of Danish Oil completed the bowl.

Reminder

10th Anniversary Raffle tickets

All raffle tickets have to be sent to Len Grantham by Friday 21st February. Any arriving after this date will not be included in the draw.

The Draw will take place on Saturday 1st March 1997 at the Wembley Woodworking Show.

The prizes will be presented on Sunday 2nd March at the Wembley Show

ASSOCIATION OF WOODTURNERS OF GREAT BRITAIN

THE ANGLIA REGIONAL SEMINAR 1997

Organised by
SUFFOLK, ESSEX, & CAMBS BORDERS BRANCH

Saturday May 31st

Sible Heddingham School

Trade stalls, Exhibition of East Anglian work.

Demonstrations throughout the day.

By

**Stewart Batty
Bert Marsh**

**Len Grantham
Gary Rance**

**Tickets £25 Including lunch
Details from Brian Partridge 01245 250931**

AWGB at Good Woodworking Show Alexandra Palace - November 1996

I feel as your Chairman I should offer you some explanation as to our contribution and involvement at this show. A few of our members have expressed their disappointment to me personally and other Committee members also, about our stand.

The two main points of complaint being:

- (1) There was no display of members work.
- (2) We looked like a lathe manufacturers trade stand.

I will explain each of these points,

- 1) The show organisers wanted a Woodturning Clinic. **Not** a Display of Work.
- 2) The lathes we used were large and perhaps dominated the space.

The fact our 10th Anniversary Raffle first prize lathe was on the stand also, added to the impression. This was similar to those being used by our demonstrators.

The complaint of the Clinic looking like a lathe manufacturers trade stand has been passed before. What I will say is we had lathes supplied at Wembley and the NEC by different manufacturers. In the past other manufacturers have supplied us, and others hopefully will in the future. We have no bias, we rotate and change on an on-going basis.

Despite giving you these explanations, I have to say I was disappointed by our presentation. These comments in no way reflect on the contributions of our members who represented us at this show. They fulfilled all that was asked of

them in far from easy circumstances. The fact is we did not give those who represented us the best promotional tools to do the job.

It was one of those events where from day one things seemed set against us, there seemed an ever on-going but changing set of problems to solve.

- (1) At the start we had four members volunteer to represent the AWGB on all four days of the show. Through various happenings and changes of circumstances none was them were able to do so. There is no blame attached to anyone here, voluntary bodies have to accept such things.
- (2) The stand size and lay out changed a number of times on the lead up to the show. It was different on the set up day from what we had been told only a few days earlier. *(It should have had an open end and front, but in the event it was only open at the front).*
- (3) Full length public protection screens made communication with the public for our demonstrators difficult. *(Normally these screens are half height and do not cause this problem).*

None of these things makes life easy, but are the sort of things that can happen when you are an invited contributor to a show of this nature. The above happenings were beyond our control.

However there were a number of things that were not, we made mistakes, we now have to learn from

them. The AWGB has to have a purposeful, meaningful and professional presence at shows like this and that means providing those who represent us with material to do that.

What do I mean by this, well the purpose of the Clinic is multi-faceted, from offering advice on turning technique problems, to tool, chuck, and lathe selection, to what abrasives and finishes to use etc, etc. All this advice is offered in an unbiased way without the pressure of someone trying to sell you something.

At Alexandra Palace we did not make this clear, there were no signs to indicate what I have outlined. Your Committee will discuss how to rectify these short comings and put a plan of action into being for Wembley.

I have put a number of suggestions down on paper that I think will help to put things right.

You may wonder why we seem to have got it wrong this time when things seem to have worked well in the past. Well this was the first show we have mounted a Clinic only, at other events we have always mounted a display of Members work also. This masked the short comings of the lack of graphic presentation required by the Clinic to make its purpose clear. Our stewards on the work display stand have always advised people of its function and guided them over to discuss their problems.

We have learnt a valuable lesson and I am confident we shall have things rectified for Wembley, the important thing is to acknowledge your mistakes and then learn from them.



6TH INTERNATIONAL WOODTURNING SEMINAR

UNIVERSITY OF WARWICK
8TH - 10TH AUGUST 1997

GENERAL INFORMATION

The University of Warwick Conference Park, Gibbet Hill Road, Coventry, Warwickshire, CV4 7AL, England, is situated 3 miles South West of Coventry City Centre and on the South side of the A45 road. (Map will be sent with final details).

ACCESS BY RAIL/AIR

The London Euston/Coventry Intercity service is approximately half-hourly throughout the day, with a journey time of 70 minutes. Taxis are available at Coventry station.

Birmingham International Airport is 12 miles North West of the University and there is a direct train service from the airport to Coventry.

A direct and regular coach service links Heathrow and Gatwick Airports with Coventry.

OUTLINE PROGRAMME

Friday August 8th

10.00 - 1400 hrs.	Arrival, registration, lunch.
14.30 - 22.00 hrs.	Demonstrations, slide presentations and lectures.

Saturday August 9th

08.00 hrs.	Breakfast
09.00 - 22.00 hrs.	Demonstrations, slide presentations and lectures.

Sunday August 10th

08.00 hrs.	Breakfast
09.00 - 17.00 hrs.	Demonstrations, slide presentations and lectures.

ACCOMMODATION

The standard accommodation for this seminar will be single room with washbasin. There will be some standard double rooms, and some single and double rooms with en-suite facilities available.

6TH INTERNATIONAL WOODTURNING SEMINAR

UNIVERSITY OF WARWICK

8TH - 10TH AUGUST 1997

FEES

The seminar fees inclusive of all meals and accommodation are as follows:

Standard single room	£195.00 per person
Standard double room	£195.00 per person
En-suite single room	£235.00 per person
En-suite double room	£235.00 per person

On this occasion we are happy to be able to offer accommodation on a bed, breakfast and evening meal basis to non-participating spouses and friends wishing to accompany seminar delegates.

Non participating delegates standard room	£90.00 per person
Non participating delegates en-suite room	£135.00 per person

The non-residential fee for seminar delegates inclusive of all meals except breakfast is £165.00 per person.

A non-returnable deposit of £50.00 per person is required with the balance to be paid in full by 30th June 1997. After this date places not fully paid will be made available to the waiting list.

Cheques should be made payable to AWGB.

Refunds can only be made to those who cancel before 30th June 1997.

Refunds will be subject to an administration charge of £10.00.

Only in exceptional circumstances will refunds be made after the above date.

Applications will be acknowledged by return of post.

Tickets, detailed programme, delegate lists, etc. will be provided on registration at University of Warwick on Friday 8th August 1997.

MEALS

Meals included in the full fees are lunch and dinner on Friday; breakfast, lunch and dinner on Saturday; breakfast, lunch and tea on Sunday.

Bar facilities will be available.

Please advise of any dietary requirements.

PLEASE NOTE

AWGB members have priority booking until 31st March 1997, after this date any unsold places will be made available to the general public at £250.00 each.

PLEASE BOOK EARLY TO AVOID DISAPPOINTMENT

Booking form in the centre pull-out of this edition of Revolutions

6TH INTERNATIONAL WOODTURNING SEMINAR



UNIVERSITY OF WARWICK 8TH - 10TH AUGUST 1997

The programme for this year's seminar will have 42 lathe demonstrations, including several speciality presentations which have still to be finalised, chain saw demonstration and photography clinics.

Your presenters for this Seminar have been chosen to provide a varied programme with something of interest to everyone. Each one has a speciality of his own and it is hoped that there will be something to be learnt from each of them.

PRESENTERS

ALLAN BATTY (ENGLAND) First appearance at an AWGB Seminar.

Allan is one of that rare breed, an apprentice trained woodturner. He earns his living as a tradesman turner and is an internationally recognised tutor. Allan considers himself to be an old fashioned tradesman steeped in the best traditions of English craftsmanship who believes in giving value for money. Anyone who has seen Allan will know that this philosophy is reflected in his work and that here is a turner who knows and loves woodturning and has something special to offer to other woodturners.

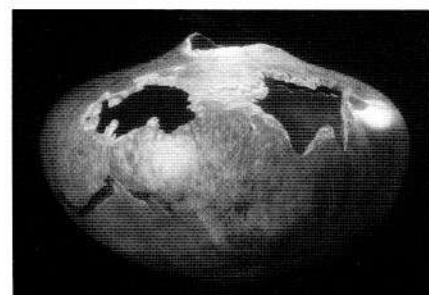


ANTHONY BRYANT (ENGLAND) First visit to an AWGB Seminar.

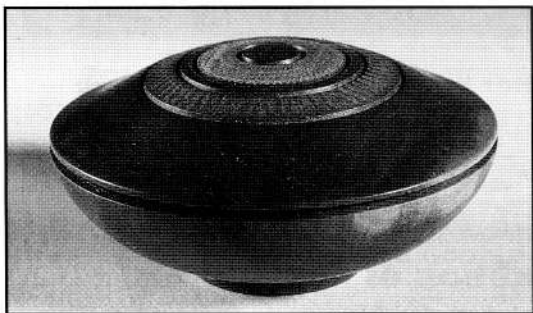
Anthony Bryant is known throughout the world for his delicate and extraordinarily thin vessels, and yet remains a bit of a mystery to most woodturners because of his careful avoidance of the demonstration/seminar circuit. It is through this self-imposed isolation and the very high standards which he sets himself, that the distinctive style which makes Anthony's work unique has evolved. We are very pleased that we have managed to coax him to demonstrate at this seminar.

DAVID ELLSWORTH (USA) Second visit to an AWGB Seminar as a demonstrator.

Master woodturner, David Ellsworth, is the father of thin-walled hollow vessels turned on the lathe and as such has probably done more to raise the standard of woodturning throughout the world than any other woodturner. David says that it is his aim to translate thought into form and to create a singular statement that results from the integration of the material of wood with the process of turning. The Ellsworth influence can be seen in the work of woodturners worldwide. Anyone who was fortunate enough to attend the 1987 Seminar or has seen this man in action will know that this is one woodturner not to miss.

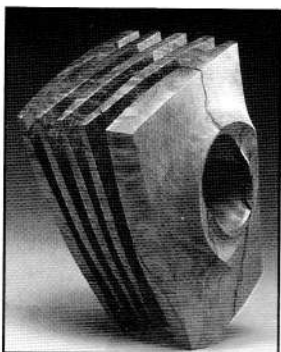


RAY KEY (ENGLAND) Second visit to an AWGB Seminar.



What can I say about this man that has not already been said. Ray has probably done more to put woodturning on the map and gain it the respect that it deserves than any other woodturner in the UK. The founder of the AWGB, he works tirelessly on behalf of woodturning and woodturners.

Ray is a popular figure on the demonstration and seminar circuit both in the UK and abroad and is in great demand for his expert presentation of the art of woodturning. We are very pleased to have persuaded Ray to demonstrate at this Seminar in addition to all the work he undertakes in the preparation and organisation of the event.



STONEY LAMAR (USA) First appearance as a demonstrator at an AWGB Seminar

Although Stoney Lamar is very well known and respected in the USA, he is not widely known in this country.

Stoney has developed the use of multiple axis techniques as a way of applying texture and sculpting forms on the lathe in order to move beyond the cylindrical form and create a sense of image and movement.

His work has a distinctive quality and I am sure that the methods which he will demonstrate will provide food for thought and inspire many of you to tread the path of discovery.

STUART MORTIMER (ENGLAND) First appearance at an AWGB Seminar.

Stuart is well known through his appearances at the National Woodworking Exhibitions. His interest in antique furniture led him into experimenting with twists and spirals as a form of decoration for turned work and he is now recognised as one of the leading exponents of this type of work. He will be demonstrating the basic principles of twisting and spiralling, so if you think that this was beyond you, then Stuart will show that an understanding of the principles involved can be the secret of success.



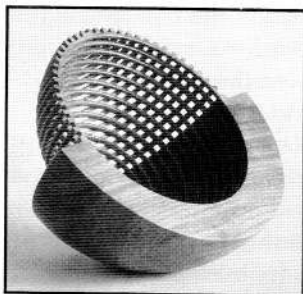
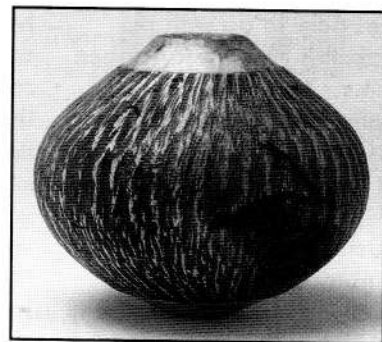
PHIL REARDON (ENGLAND) First appearance as a demonstrator at an AWGB Seminar.

After more than twenty years of demonstrating and teaching woodturning, Phil Reardon remains as enthusiastic about the craft as ever. Phil has a reputation for not taking woodturning seriously, but don't be misled, behind the facade is a serious and very skillful craftsman who has contributed a great deal to woodturning with the development of tools and accessories.

When you watch Phil you can be sure of receiving a few surprises, gaining some extra insight into woodturning and having a lot of fun.

JULES TATTERSALL (WALES) First appearance at an AWGB Seminar.

Jules began woodturning in Australia and admits to being influenced by the work of contemporary Australian turners. He strives to produce pieces whose form, texture and overall balance is both stimulating and soothing. He likes to keep his shapes simple and, where appropriate, uses various techniques to enhance the natural features of the wood to give each piece a unique visual and tactile character.



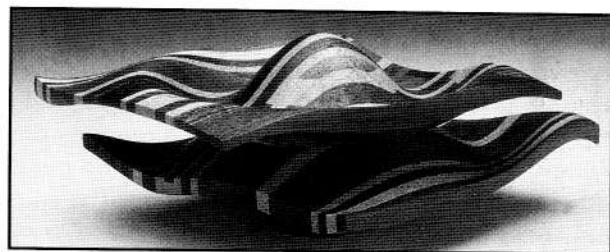
HANS WEISSFLOG (GERMANY) Second appearance at an AWGB Seminar.

Those of you who saw Hans at his previous appearance at an AWGB Seminar will know of the wonderful technical precision of his work with its perfect proportions. His lattice ball boxes are exquisite and the skills demonstrated in their production have to be seen. His work is described simply as small and fine. He prefers simple forms that come alive through clear distinctive lines rather than decoration. The use of closed circuit television will greatly enhance your view and appreciation of Hans's techniques and craftsmanship.

VIC WOOD (AUSTRALIA) First appearance at an AWGB Seminar

An internationally recognized woodturner and teacher with credentials in cabinetmaking and silversmithing, Vic Wood delights in making "impossible" pieces such as his square-edged lidded container.

Vic says that his inspiration for woodturning came during a visit to Australia by Stephen Hogbin from Canada when he first saw woodturning taken beyond the basic. It was this inspiration coupled with his own inherent skill and flair that has made Vic one of the most influential woodturners in Australia today. Many of the most respected turners in Australia will readily admit to having been trained and influenced by him.



A day out in beautiful Shropshire

by Chris Cook

Like most branches of the AWGB, the West Midlands Branch runs a programme of events throughout the year. These events are all designed to give members a chance to develop their woodturning but each event is very different in structure and content and each individual probably gets different things out of each event. This especially struck me at a recent event.

Last Sunday saw our annual pilgrimage fifty miles out of Birmingham to Phil Brownlee's workshop near Tenbury Wells. Phil's stated aim for the day was for us to enjoy ourselves and this was easy to do with the activities Phil had arranged, the surroundings of his home and workshop and an excellent spread of food at lunchtime.

Such an event is different in a number of ways: Firstly, and without any detriment to Phil or the event, Phil has a wide range of experience and skills without claiming to be an expert in all (Jack-of-all-trades, master of none). This means that the day had a lot going on without a lot of expert analysis and instruction. More an emphasis on "have a look at what is happening and take from it what is interesting and useful for you".

Secondly, the group is not confined in a hall and the freedom of the surroundings seems to promote talking and discussing. In this environment you have a better chance of getting to know other members and

to exchange experiences and ideas. The day also offered a programme for members partners so the numbers and interaction is increased.

Lastly, the day covers a wide range of skills and broadens your ideas. I came away from the day with a couple of tips and a completely new idea that I am keen to try.

Phil lives and works in the rural wilds of Shropshire and often needs to associate with other crafts-people. He particularly works with a blacksmith Pete Crownshaw and the two had devised a day combining wood and metal. The day began with the all-important arrival beverage and a chance to see the progress of Phil's workshop. Last year the workshop had no roof but this year machinery is installed and operational. We could have done with the roof last year whereas this year was rainless! I also noticed great progress in cultivation with fresh crops falling off of all manner of fruit and vegetables. Maybe next year will include a "Pick-your-own" session?

Phil got down to business mounting an old piece of weathered Oak on his lathe. He was aiming to keep the base untouched and natural so had to mount an irregular face onto a faceplate. Here came an invaluable tip to make a secure fixing. He mixed a quantity of car body-filler and put it in a plastic bag. The squidgy bag then acted as a filler/

buffer between the irregular wood and the faceplate. The face plate was left in position until the filler had hardened and then screws used to make a firm fixing. This is going to encourage me to work on more naturally based bowls instead of immediately thinking of turning a base for a chuck. With constant apology for not being a woodturner Phil manfully struggled with this piece of Oak, truing the edge and hollowing out a bowl shape. I must say that after ten minutes I think I would have consigned this piece of wood to the bin. It was cracked and very dry or rotten in parts. However Phil persevered and indeed this was one aim of the day to show how "difficult wood" could be used to advantage.

After fifteen minutes it became clear that standing at right angles to the axis of rotation was not a good idea and the gradual separation of the group of observers suggested to Phil that things might be dangerous. Two pounds of Oak flying off a lathe running at about 400 rpm. is no joke and most of us are not quick enough now to duck. Phil had a novel way of overcoming this potential disaster. Clingfilm round the outer rim held the bowl together and although he was a little more careful about the ferocity of cuts the material stopped the impending separation. Rough sanding was accomplished with a drum sander which made short work of any imperfections from a rusty

turner. The finished bowl had a beautiful figure in the Oak combining grain, burr and rotting patterns with an interesting shape enhanced by the natural base. As Phil was removing the faceplate he explained that Pete the blacksmith was going to embellish the bowl with straps and feet. Good job; because the bowl fell into two off the faceplate; definitely one for the bin.

Pete approached his task with gusto and working with his fire and anvil cut and shaped two straps to encircle the rim. These two straps were secured with protruding horseshoe nails which gave an added attractive feature. William Morris said that objects should be both functional and beautiful and these straps were certainly both because they held the bowl parts together as if there had been no separation and were an attractive addition to the overall design of the bowl. Pete attached the straps while hot and they scorched a pattern into the rim as an added feature. Having secured the bowl Pete proceeded to make three metal feet. When blacksmiths get that red hot glow and wield the hammer is the time when I start to wonder if I want to extend my skills. The outcome of a lot of puffing and banging were three feet secured to the bottom of the bowl to provide a tripod of support. By lunchtime, the finished product was an attractive bowl full of peculiar character and features. We were pretty sure you could get £100 for it in some up-

market gallery.

I don't want this description to get out of hand but lunch was magnificent.

Sustenance is important and bread and decent cheese will keep me happy for days. Add to this a choice of flans, salads and pies and the afternoon session could have happily started at 4.00 o'clock. But we were there for the woodturning and blacksmithing so it was back to work.

Pete showed us how we might be able to do some smithing in the workshop with a small forge using a blow torch and Ere bricks. Stimulating but I'm not sure I will be trying it out at home although some members of our branch are very "metal" minded (no comment on anyone individual's brain!) and will probably try a few barbecue attempts.

Phil arranged for other members to have-a-go at wet wood turning. It is so satisfying to see those shavings fly; and so impressive. I had to leave the day early but I am sure that we all left with new ideas and experiences.

My reason for going to branch events is that I come away from them wanting to get back to my lathe to try something out. That motivation and stimulation is priceless and I'm just off out to get some car-body filler to mount a burr of Yew and a catering box of cling-film because I can see a crack in the blank already. Previously I had no inspiration about this piece of Yew but was reluctant to throw it out. I am now fired with imagination!

A Woodturning Newsgroup on the Internet

Woodturners now have their own newsgroup on the Internet, called `rec.crafts.woodturning`. Newsgroups are international bulletin boards catering for every kind of interest and hobby - but not woodturning, until now.

When Londoner Robert Craig joined the Internet in May 1996 one of the first enquiries he made was to ask whether there was a woodturning newsgroup. Certainly there was a newsgroup for woodworkers generally, but their postings covered every kind of woodworking query and comment on topics like kitchen cabinets, table-tops, flooring and an ever-running argument between hand-tools and power-tools. Turning topics occupied only about 5% of the postings.

Robert's enquiry found a very positive response from all the turners who heard about it, particularly from Roger Wiegand, Phil Koenig and Robert Sorrels, all American turners. The four of them decided to become the proponents of a new group for woodturners. This involved drafting a charter for the group, which was approved by the Internet administrators and thrown open for discussion at the end of July.

The final decision about creating a new newsgroup depends on a world-wide vote, which in this case took place in September and October. By the time voting closed on 7th October it was clear that this new group had raised huge

enthusiasm among turners around the world.

Messages of support came in from all over the USA, Australia, New Zealand, Scandinavia and South Africa. The vote was carried by a large margin, and "`rec.crafts.woodturning`" went live in the middle of October 1996.

Postings are now running at several dozen messages a day, covering every aspect of woodturning, as well as friendly banter between woodturners all over. The new group will be particularly useful to new turners, who are asking questions like "What kind of lathe should I buy", "How do I get started", "What do other people think are the best books and videos" and "How do I release a stuck morse taper?"

The charter of `rec.crafts.woodturning` ("`rec.`" stands for "recreational activities", but the group is attracting as many professionals as hobbyists) says that its purpose is "to facilitate open discussion about all forms of woodturning". It will provide a global forum to discuss tools, techniques, styles, materials, shows and competitions, education and educational materials. The group will also serve as a platform for international

information sharing among members of turning organisations such as AWGB, AAW and NZWA.

Advertisements from commercial businesses on turning topics like equipment, tools, materials, publications and courses are welcomed, up to once a fortnight for each advertiser. Non-profit organisations can post messages more frequently, for example, announcing courses and seminars

This newsgroup offers contact with a worldwide audience to individual turners and organisations almost instantly, at no cost apart from their ordinary Internet subscription and the cost of a local phone-call. Think of the letters page of a woodturning publication, or its "Q & A" column. Now imagine the same thing self-published worldwide, and responses coming back within hours.

You bought a bowl blank of koa or kiatt this afternoon and you want to know how it will turn? Ask the newsgroup, and a turner from Hawaii or South Africa with one of these trees growing in his garden may be giving you the answer tomorrow, when you next pick up your postings from `rec.crafts.woodturning`.

Did you Know...

Reprinted from the Cumbria Branch Newsletter

Horse Chestnut conkers contain soap-like chemicals (saponins) which are added to some shampoos and shower gels to enhance their "natural" image. Aescin which can be extracted from the nuts is an effective remedy for sprains and bruises. Between 5,000 and 10,000 acres are expected to be grown by the British Forestry Commission to supply pharmaceutical firms.

Selsdon Forest Show and Country Fair

17-18th August 1996

Peter Miles East Surrey Woodturners.

The East Surrey Woodturners were once again fortunate enough to be invited by Croydon Council to attend the Selsdon Show. This is the third year running that we have been invited to participate in this very popular event. The Show as its name implies, is held in Selsdon Woods in Surrey and is intended to bring back to the attention of the public many of the old country crafts which are in danger of dying out through the years. There is a Celtic Village with people in the appropriate garb from the middle ages, Falconry Displays, Cordwainers, Potters, Static Steam Engine Displays, a Steam Powered Timber Mill, Craft Marquee and many other attractions including a real traditional Funfair.

At our last club meeting on the last Thursday of July our Secretary Dave Grainger dropped his bombshell and told me that as he would be in Canada at the time of the show he was relying on me to organise our attendance at the show this year. This gave me just two weeks in which to persuade our members to produce as large a selection of sale goods for our display stand as they could manage, actually build a new and improved stand, appeal for volunteers to demonstrate on the two lathes in one hour stints throughout the two days of the show, and

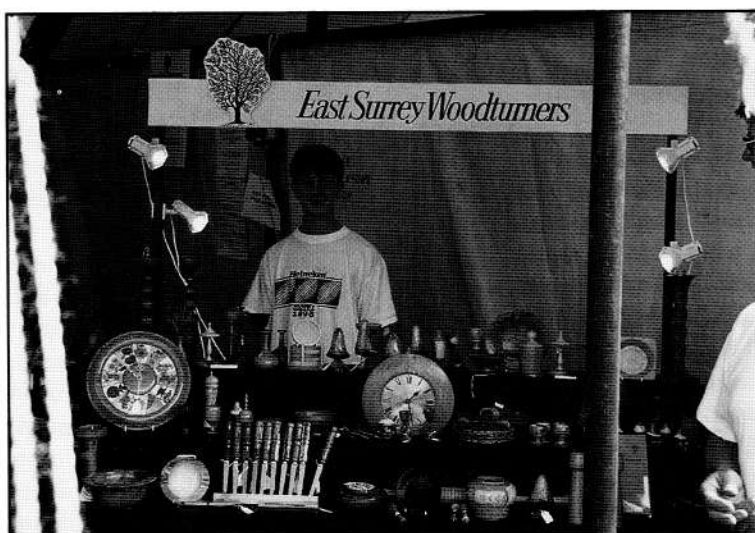
arrange for a team of helpers to transport all the equipment and set it up on the Friday evening before the show.

Fortunately the exhibitors car passes arrived during the week and we were able to gain access to the Showground on Friday evening as planned with our cars packed with

equipment and proceeded to set up the display stand at the end of the Craft Marquee. We had also brought a lightweight aluminium and canvas awning to shelter the demonstrators and the lathes from any inclement weather as last year the rain came down in stair rods. The new stand was put together and the tailor-made cloth (courtesy of a lot of hard work by two of our members wives) was fitted, the side supports bolted on, the spotlamps attached to the supports and finally our new Club Name Board put in place. The lights

were plugged in and switched on and we all stood back to admire the new stand. All that was left to do now was to secure the Marquee until the next morning. Saturday morning was

a clear cloudless sunny day and we felt that perhaps the Gods were going to smile on us after all. At 8.45



a.m. I drove into the Showground and was delighted to see half a dozen club members already at work setting up the lathes, power leads, tools etc. I quickly opened up the back of the car and started passing out the boxes of sale goods to go on the stand. While we were setting up our display the other members had set up the lathes, positioned the grinder on its bench between the two lathes, switched on and checked that they had power on.

The show was due to start at 10.30 a.m. but by about 9.45 a.m. we were all ready to go and so there was plenty of time for a well-earned cup of coffee and a chance to admire the excellent standard of goods on display. The show was officially opened and the crowds started to fill up the showground, the lathes were switched on and we were in business. One of our demonstrators was 14 year old Ronnie Head who can be seen in the accompanying photograph showing our stand. Ronnie has been a very keen member for some time now and was one of the first to volunteer to help so we feel privileged to have such a



keen young man in our group (and the A.W.G.B.) and like to give him all the help and encouragement we can.

As the day wore on the temperature climbed higher and our turners were glad of the shade provided by the awning, the crowds collected in front of the lathes and soon we were busy answering questions on woodturning, finishing, favourite tools, types of timber etc., etc., and all the time the sales team were doing a steady trade. By the end of the day our stocks had diminished and had to be replenished for the next day, our thermos flasks were empty and we were weary but happy.

It had been a good day all round with lots of interest generated in woodturning and many requests for membership application forms.

Sunday dawned hotter still and we were all very thankful for the shade of the Marquee by lunchtime. In the afternoon the temperature got even higher until about 3 p.m. when they announced over the Public Address System that it was now over 90 degrees and the beer tent was beginning to run low on supplies. By now we were so busy we did not have time to visit the beer tent, sales were going well and we had a friendly, enthusiastic crowd round the demonstrators. Gradually, about 5 p.m. the crowd started to dwindle away and we had time to relax and take stock of the day. Sales were down slightly on the previous day, but had still reached a healthy level. It was time to shut down the lathes, reel in the power cables, start packing the unsold items in their boxes and dismantle the stand. Once again it was a team effort with the members stripping down the machines and several of the wives packing and boxing the unsold items ready to be transported back to their owners and the site was cleared and the cars loaded up extremely efficiently.

On reflection, it was a very successful show, not only for us, but for Croydon Council, and we are eagerly looking forward to coming back next year.

Youth Lathe Loan Scheme

As you will all know, the AWGB now has two lathes with turning tools which it loans on an annual basis to young people who show promise in woodturning, but who do not have equipment of their own. This year the Middlesex

Woodturners Association was very fortunate in securing one of

these to be loaned to their Junior Member, Greg Sinclair. Greg is 14 years old and has produced already some very creditable turnery. He is under the wing of Mike Cripps, so we know that he will be pointed in the right direction, and other members are taking an interest in his progress too.



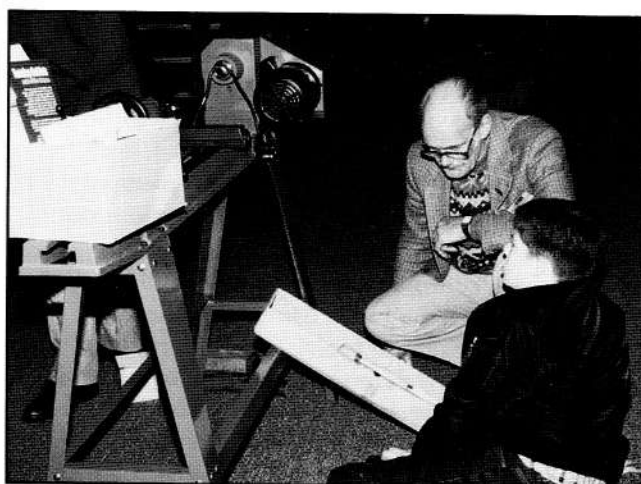
On the left of Greg Sinclair is Mike Cripps who has been teaching him to turn wood, on the right is Mac Kemp - Chairman of Middlesex Woodturners

During the December meeting of the MWA Greg was formally presented with a brand new Axminster M900 lathe, a set of Ashley Isles turning tools, a Bonham chuck from John Boddy's and some wood donated by members from Middlesex. It was a proud moment for Greg and for his parents, who wisely kept themselves in the background. Greg's membership of the AWGB and the MWA is for the coming year also sponsored by the two organisations. The whole package is a very generous part of the drive to recruit young people into the craft of woodturning.

Local newspapers were advised of the event and although they were not able to send reporters and cameramen along, the Uxbridge Gazette ran an article in the following week's edition when they interviewed Greg and photographed him standing at the lathe in the shed at his home.

He was very happy to have won the loan of the lathe. As he said, "It will develop my skills and I can make things and make a bit of money out of it", sentiments which are sure to strike a chord with many fellow turners.

Although he does not yet appreciate it, he will also experience the pleasure and pride of creating well made unique objects, and hopefully he will develop an interest which could last him for his lifetime.



Mac gets down to basics with Gregg

The AWGB would like to thank Axminster Power Tools, Ashley Isles (Edge Tools) Ltd and John Boddy's Fine Wood and Tool Store for their generous help in providing the products to allow the Association to get this scheme started

A Weekend with the Wedmore Wizard of Woodturning

by Roger Dugdale

On a very wet weekend last October 10 members of the Kent Branch of the AWGB descended on Melvyn Firmager and his wife Anne for a two day workshop in deep Somerset. Some members stayed in Melvyns cosy farmhouse and the remaining in two other establishments.

To describe Melvyn as a wizard is no exaggeration as everyone would agree who has seen him make the shavings fly. His wizardry goes much deeper than merely handling tools with great skill for in addition he has developed a whole new system of turning, ideally suited to the work on hollow forms in which he specialises, but equally applicable to other kinds of turning including bowls and boxes for example. To make the system possible Melvyn has designed and developed his own range of tools which includes the versatile "Nib" gouge, Swept back gouge, Scrapey gouge and Angle tool. Melvyn is a devotee of Tai Chi (one of the martial arts) and underlying his own woodworking system is a philosophy which reflects this interest in terms of body balance, stance and long smooth sweeps of the gouge.

Saturday started with a short history of Melvyns entry into woodturning to the present day. He then covered subjects that included the use of Tai Chi, Health and Safety, Workshop Insurance and various rules that should now apply to our own workshops.

Melvyn started turning later than he expected, mainly caused by our interest and the rapport in the subjects just mentioned, we made up for lost time later in the day by finishing at 18:45. He used the VB36 lathe to demonstrate the turning of a bowl from a piece of walnut using his range of tools and a tool rest of 15 inches. The significant thing about the rest is that it has a number of tappings into which a half-inch diameter pin about 3 to 4 inches long can be screwed horizontally as a finger-steady for the front hand on the gouge - safer than wrapping a finger round the rest itself or round

the post supporting it.

We were strongly recommended to equip our lathes if possible with a foot-operated on/off switch, particularly for hollow turning through a small hole as a protection against damaging the wood when inserting or withdrawing the hollowing tool.

Preference to using small face plates 2/3 inch diameter and designed to take round-headed sheet metal No. 10 high tensile steel screws with a square drive as opposed to countersunk for more accurate re-mounting. Melvyns method in mounting a face plate to a piece of wood is on a flat service achieved by using a power hand planer, this avoids reverse chucking.

To continue with the turning of the bowl Melvyn demonstrated the correct use of all his tools and giving advice on how to achieve the best results. External sanding was achieved by using a variable speed angle grinder with a 5" pad and 6" sanding disc, this according to Melvyn is the quickest way he has found to sand. The piece had a few cracks in star shape (feature of the wood) which needed to be glued. The process used was to apply liquid paraffin either side of the crack using an artist's fine brush, when soaked in, thin super glue is applied to the crack with great care using a capillary tube attached to the bottle of super glue. The liquid paraffin prevents the glue from soaking into the grain forming a shiny surface. The piece is then finished in liquid paraffin and given a final wax finish.

Melvyn continued with a piece of wood to demonstrate spindle turning using the "Nib" gouge, then continued to work the wood into a hollow form. using his various designed tools. The M F angled tools were demonstrated as they are able to reach parts other hollowers cannot reach. To help check the wall thickness Melvyn used a slim light called 'bend a light' which indicates whether the wall thickness is even,

other ways were to use modified bent wire coat hangers.

This completed the first day, we all then retreated to a local inn including Melvyn and Anne for an enjoyable evening of excellent food and drink.

Sunday was devoted to hands-on instruction using four lathes, 3 home made plus the VB 36. Two lathes were set to run 'inboard' and the other two 'outboard'. (anti-clockwise and clockwise respectfully) Melvyn incidentally, is left handed and on balance prefers to use the tools left handed which is often compatible with 'outboard' turning. He is a great advocate of ambidexterity so his pupils all had to have a go using the wrong hand, so to speak, some managing better than others.

With 2/3 members to a lathe meant everyone had the opportunity to practice with all the tools in turning a hollow form, end results varied from a disaster to an acceptable form. Tool sharpening also formed part of the afternoon as a number of members purchased some of Melvyns tools which will be a great addition to our selection of tools. Many points about correct stance, feet positioning etc. that Melvyn previously told us were a great benefit to our practice. Other points noted were that the recommended tool handle grip was the long grip, like a golfers and key to sharpening the 'Nib' gouge is to 'Rock and Roll'.

Prior to our visit one of our members had reservations regarding the potential benefit's and did wonder if the weekend would be a waste of time and money. The thoughts were soon dismissed as Melvyns magic and skills had us spell bound and all agreed that so much was learnt in techniques etc. that it was worth every penny.

The day finished on a high, what a marvellous weekend - thanks to the unstinting efforts of Dave Miles as well as our host and his wife.

The International Woodworking Exhibition

The world's Premier Woodworking Showcase

Hall One, Wembley Exhibition Centre, London
Thursday 27th February - Sunday March 2nd 1997
Opening times: 9.30am - 5.30pm daily

Wembley Exhibition Centre is home to the ultimate consumer woodworking show. With more high quality trade stands, demonstrations, lectures, free workshops, displays and competition entries than any other show, this is THE exhibition for all woodworkers - from the amateur to the professional craftsman.

Can you afford to miss it?

Europe's largest shop Window!

The widest possible selection of woodworking products is available - from finishes to lathes, power tools to timber, all at unbeatable show prices. Don't miss this opportunity to compare and try before you buy.

The Best Expert Advice.

The full range of free demonstrations and 'have a go' workshops ensures that no questions go unanswered! This is your opportunity to discuss your woodworking experiences, learn new techniques and enhance your skills from many of the internationally renowned experts.

Turning Demonstrations from Ray Jones and Stephen Cooper
Carving with Peter Berry and Michael Painter
Toy making advice from Geoff Soan
Jack Hills country crafts
Cabinet making demonstrations from Gordon Warr

Magnificent Competition Displays.

The UK's best examples of craftsmanship on display from the finalists in our prestigious competition. Outstanding work covering all classes will be there for your delectation, including turning, carving, cabinet making, toys and routing as well as the entries in our '2CV model making' competition.

Clubs, Colleges and Associations.

Your chance to join the clubs and associations, marvel at the specialist displays and demonstrations and talk about woodworking with the experts.

Lecture Programme.

Free lectures covering a plethora of subjects take place every day, including turning, carving, crafts, furniture and cabinet making.

Craft Fair.

Take a leisurely walk around the Craft Fair where you will find woodworking and other crafts for sale.



6TH INTERNATIONAL WOODTURNING SEMINAR

UNIVERSITY OF WARWICK
8TH - 10TH AUGUST 1997

Ticket application (Please use BLOCK letters throughout).

MEMBERSHIP NUMBER _____

SURNAME _____ (Mr., Mrs., Ms., Miss, Other)

OTHER NAMES _____

FULL POSTAL ADDRESS _____

TELEPHONE NUMBER _____ CAR REGISTRATION No. _____

I wish to apply for _____ tickets for standard single accommodation at £195.00 each.
_____ tickets for standard double accommodation at £195.00 each
_____ tickets for en-suite single accommodation at £235.00 each
_____ tickets for en-suite double accommodation at £235.00 each
_____ tickets for non-participating delegate (standard) at £90.00 each
_____ tickets for non-participating delegate (en-suite) at £135.00 each
_____ non-residential tickets at £165 each

I enclose cheque/postal order payable to AWGB in the sum of

£ _____ IN FULL PAYMENT for tickets as detailed above

OR

£ _____ IN FULL PAYMENT for _____ NON-RESIDENTIAL tickets.

OR

£ _____ deposit(s)* on _____ tickets and undertake to pay the balance by 30th June 1997.

* (Deposit is £50.00 per ticket)

Signature _____ Date _____

This application form should be sent to:

Len Grantham, Spindles, Cooper Close, NETTLEHAM, Lincolnshire, LN2 2XX
TELEPHONE 01522 595660



**From Edgar Back - Luxembourg
AWGB-INTERNATIONAL SEMINAR 97**

About 16 months after the event, my brains are still feeding on the AWGB woodturning seminar 95 in Warwick.

This event being still very alive in my mind, the 1997 seminar is announced with trumpets in *Revolutions 39* again with breathtaking (creme de la creme) names. . .

Although patience will be asked for 8 months, I'm looking forward to it and will try to be in the first row to set up my holiday calendar regardless of my office colleagues. But despite the prestigious names, a little stomach pain is hunting me just as at the end of seminar 95...

There will be at least ten main presenters, others will be added...

All this only in three days of demonstrations. And so will I probably leave again with that same stomach pain.

At this moment I'm sure that I won't have the possibility to watch each demonstrator and this feeling to miss something important causes my pain.

Say I decide for the names Nr 1 to 5 can I afford to miss BRYANT, KEY, TATTERSALL...? Or starting by Nr 6 what's about missing ELLSWORTH and Co...? Doesn't this cause trouble to other delegates? Wouldn't it be an idea for the future to keep the number of demonstrators low by keeping the same high level and give the audience the opportunity to watch extensively each one of the artists?

I would be glad to read about reactions of other woodworms in one of the next issues of *Revolutions*.

I send congratulations and wish plain success to the AWGB, and plenty of audience with me hopefully part of it.

Attention all lamp makers

Reprinted from the Cumbria Branch Newsletter

Please note that the European Commission requires all products, covered by one or more European Directives, to carry a mark in the form:



Electrical items including wired up lamps will be required to meet the British Standards corresponding to the international standards referred to in EN 60 598. For luminaires this is BS4533.

In the UK the CE mark is applied by the manufacturer to the product or to the packaging the instructions for use or the guarantee certificate.

The CE mark is a statement, by the manufacturer, that the product complies with directives applicable to that product. It is intended only for recognition by policing authorities (e.g. Trading Standards Officers in the UK) at the point of sale.

Having placed the CE mark on the product or packaging, the

manufacturer may be challenged, by a policing authority, to prove compliance.

As a minimum the manufacturer is required to:

- provide type test proof of conformity
- provide design documentation
- ensure conformity of current production.

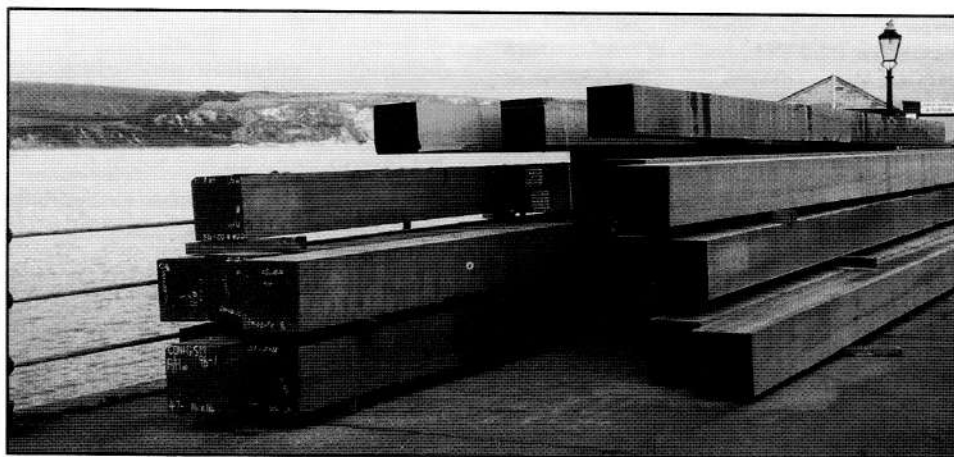
This documentation is required to be retained for not less than 10 years.

etc. etc.. etc.

Other non electrical requirements are specified in BS to cover such items as cable grips, grommetted metal parts, torque tests and labelling.

All of this suggests that if you make lamps then you had better get yourself fully certificated and test equipment approved! Or you could just supply only the turned wooden bodies.

References are obtainable from HMSO quoting ISBN 0-11-043614-2 (*Electromagnetic Compatibility Regulations 1994*) and: ISBN-0-11-043917-1 (*Electrical Equipment (Safety) Regulations 1994*).



The photo above shows 17 foot lengths of Greenheart. It is being used in the restoration of the old Victorian pier at Swanage. They will be used to renew some of the piles that support the structure.

Photograph by Peter Berry

Affiliated Branches

AVON & BRISTOL

Secretary: Alan George, 276 Filton Avenue, Horfield, Bristol, BS7 0BA

Meetings: 3rd Thursday of each month **Time:** 7.30pm

Telephone: 01179 697338
Venue: Keynsham Baptist Church Hall, High Street, Keynsham Bristol

COLCHESTER WOODTURNERS

Secretary: Wendy Thompson, The Beild, Swan Lane, Stock, Essex. CM4 9BQ

Meetings: 1st Tuesday of each month **Time:** 7.30pm

Telephone: (Daytime) 01206 791697
Venue: Copford Joinery, Haven Road, The Hythe, Colchester

COOMBE ABBEY WOODTURNERS

Secretary: Sheila Bromfield, 28 Maderia Croft, Coventry CV5 8NY

Meetings: Every sixth Saturday afternoon

Venue: Coombe Abbey Visitors Centre, Coombe Abbey Country Park, Bricklow Road, Coventry.

CUMBRIA WOODTURNERS ASSOCIATION

Secretary: Fred Singleton, 1 Piel View, Gleason, Nr Ulverston, Cumbria. LA12 0QQ

Meetings: 3rd Saturday of each month

Telephone: 01229 869550
Venue: Varies - please write for details

EAST HERTFORDSHIRE

Secretary: Nick Bright, 9 Yews Lane, Sawbridgeworth, Herts

Meetings: Third Wednesday of the month

Telephone: 01279 724038
Venue: Please write for details

EAST SURREY WOODTURNERS

Secretary: David G Granger, 290 Addington Road, Selsdon, Surrey, CR2 8LF

Meetings: Last Thursday of each month **Time:** 7.30pm

Telephone: 0181 657 1895
Venue: The Edgemoor Centre, Monks Hill, Selsdon

HEART OF ENGLAND

Secretary: Marilyn Cox, 12 Fields Close, Badsey Evesham Worcestershire WR11 5JN

Meetings: Every sixth Friday **Time:** 7.30pm

Venue: Stratford Upon Avon High School, Alcester Road, Stratford Upon Avon, Warks

HERTS & BEDS

Secretary: Mike Shaaf, 51 Hart Hill Road, Luton, Bedfordshire. LU2 0BA

Meetings: Second Tuesday of each month **Time:** 7.30pm

Telephone: 01582 36382
Venue: The Cork Room, Adey Fields Centre, Hemel Hempstead.

KENT BRANCH

Secretary: Chris Wilson, Longacres, Chart Road, Chart Sutton, Maidstone, Kent. ME17 3RB

Meetings: Please write for details as date and location vary.

Telephone: 01622 842097

MIDDLESEX WOODTURNERS ASSOCIATION

Secretary: David Harrop, 68 Burgess Road South, Beaconsfield, Buckinghamshire. HP9 1EJ

Meetings: 2nd Thursday of each month **Time:** 7.30pm

Telephone: 01494 678201
Venue: Harlington Community School, Hayes, Middlesex

MID MARCHES WOODTURNERS

Secretary: Paul Balcomb, Bodgers, 5 Caefelyn, Norton, Presteigne, Powys. LD8 2UB

Meetings: Last Monday of each month

Telephone: 01544 267010
Venue: Presteigne Memorial Hall

MID - STAFFS WOODTURNERS ASSOCIATION

Secretary: Graham Allen 132 Green Lane, Rugeley, Staffordshire. WS15 2AU

Meetings: First Friday of each month

Telephone: 01889 585037
Venue: The Village Hall, Etching Hill, Rugeley, Staffordshire

NORFOLK WOODTURNERS SOCIETY

Secretary: Bernard Rose, 63 Belmore Road, Thorpe-St-Andrew, Norwich, Norfolk. NR7 0PR.

Meetings: 3rd Wednesday of each month

Venue: Fakenham High School or Beetley Village Hall, Nr Dereham, Norfolk

NORTH LONDON WOODTURNERS GROUP

Secretary: Robert Craig, 55 Woodside Park Rd, Finchley, London. N12 8RX

Meetings: Third Thursday of each month

Telephone: 0181-446 0679
Venue: Varies - please write for details

SCOTSWOOD

Secretary: George W Hunter, 3 Dundas Avenue, North Berwick, East Lothian, EH38 4PS

Meetings: Varies - Please telephone for details

Telephone: 01620 892293

SOUTH CHESHIRE & STAFFS

Secretary: Barbara Fishburn, 12 St Leonard's Avenue, Ipstones, Stoke-on-Trent, Staffs. ST10 2 QD

Meetings: Second Thursday of each month

Telephone: 01538 266468
Venue: Senior Citizens Centre, Hanover Street, Newcastle-U-Lyme

SUFFOLK ESSEX CAMBRIDGE BORDERS

Secretary: Patrick White, 62 Chapel Hill, Halstead, Essex CO9 1JP

Meetings: Second Tuesday of each month

Telephone:
Venue: Peter Childs, The Old Hyde, Little Yeldham, Halstead Essex

SUFFOLK MID-COASTAL

Secretary: Jeff Moss, 29 Barton Road, Woodbridge, Suffolk. IP12 1JQ

Meetings: First Thursday of each month

Telephone: 01394 383569
Venue: Village Hall, Marlesford, Suffolk.

THAMESIDE WOODTURNERS ASSOCIATION

Secretary: Alec Owen, 27 Leigh Road, Leigh-on-Sea, Essex. SS9 1JP

Meetings: Second Wednesday of each month

Telephone: 01702 73137 (Day) 01702 74757 (Eve's)
Venue: Ridley Studios, 27 Leigh Road, Leigh-on-Sea, Essex

THE VILLAGE TURNERS

Secretary: John P. Cranna, 5 Stoke Hill, Oundle, Peterborough. PE8 4BH

Meetings: 1st Saturday of each month

Telephone: 01832 273377
Venue: 103 Garton End Road, Peterborough

WEST CUMBRIA

Secretary: Geoff Robinson 2 Countess Road, Bransty, Whitehaven, Cumbria. CA28 6BS

Meetings:

Telephone: 01946 691803
Venue:

WEST MIDLANDS

Secretary: Graham Lovett, 66 Beachcroft Road, Wall Heath, Kings Winford, West Midlands. DY6 OHX

Meetings: Every 6 weeks. **Venue:** Water Orton Primary School, Vicarage Lane, Water Orton, Birmingham, West Midlands

WEST NORTHANTS WOODTURNERS

Secretary: Mal Hill, 2 Kings Green, Prior Park, Daventry, Northamptonshire. NN11 4UB

Meetings: Third Wednesday of each month

Telephone: 01327 72982
Venue: Long Buckley RFC

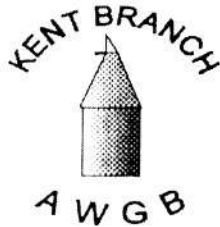
WORCESTERSHIRE WOODTURNERS

Secretary: John Milward, 39 Summer Road, Kidderminster, Worcestershire. DY11 7JS

Meetings: Please contact the Secretary

Telephone: 01562 824428
Venue: Droitwich High School, Ombersley Road, Droitwich, Worcestershire

News from the Branches



In November we had a branch visit to Liberon, who now occupy new premises in New Romney. 38 members were present, some of whom had travelled well over 50 miles from the other end of the county. Unfortunately, we were not shown anything of their production facilities, which we felt was a great pity, as most of us do know how to apply their products to our turned items and would have much preferred to see where their range of polishes and other finishing materials are made, even though it was a Saturday morning when their works might have been silent.

Also in November we had a demonstration by Bill Jones, and what a fascinating day it was. One hint or tip followed another, regularly interspersed with anecdotes from the past.

At the beginning of December we held our annual exhibition and sale which runs for ten days. 21 members exhibited a wide range of items from high quality gallery pieces to small craft fair items. This is a good time for an exhibition as people are always on the look-out for Christmas presents.

A members preview and social evening was held the day before the exhibition opened, and a Christmas dinner attracted 50 members and visitors on the evening before it closed.

We start 1997 with an interesting programme of meetings, which will be putting more and more pressure on members to actively participate by demonstrating at meetings or talking about some of the things they make in their workshops



Christmas has come and gone and I am writing this with a faint covering of snow outside the window. In fact the weather has been so dull and uninviting that even that 'odd bit of wood' found in the hedgerow looks as though it has lost its character and potential for that illusive masterpiece. On the other hand the Club is looking forward to a stimulating and successful year. Following our A.G.M. we have a new Chairman, Vice Chairman and Secretary and have accepted a new Club constitution which should see us through into the millennium.

Although the Club is scheduled to meet once a month the coming years program has been arranged with at least two additional meetings to accommodate the available free dates of our demonstrators and we look forward to welcoming Keith Rowley, Len Grantham, Robert Sorby and we are visiting Ashley Isles factory early in the year. The first demonstration of the Year will be on April 8th. when our founder Chairman has agreed to approach with care a large oval burr which we have all been looking at for some time now. One of the problems has been to find a lathe of sufficient size in a workshop with enough space to accommodate members. Fortunately one of our members has agreed to move his Graduate from workshop to garage for the day and provide a freestanding tool rest which is considerably heavier than the lathe.

Several members have attended Craft fairs in the run up to Christmas and this has been a very useful vehicle for publicising -the Clubs activities along with a series of demonstrations at our local tool supplier who advertises the activities of the Club at every opportunity. It is hoped to arrange a long term display of our work at the County library in Peterborough during the coming year in an effort to attract young members to the Craft.



The last three months' Branch Meetings have featured the efforts of some of our very talented members.

In October Dennis Wanklyn treated us all to an in-depth workshop on making Smoker's Bow Chairs. Many tips about what to do and pitfalls to avoid based on Dennis's experience were passed on in a very professional way.

Information on jigs and tools used in the construction proved invaluable. Proportions of seat diameter, leg length and back height were discussed together with the traditional shaping of the legs and back spindles. All this would have been very time consuming to learn alone by trial and error!

November's meeting saw the Branch Chairman give one of his extremely informative talk cum demonstrations - this time about split turning. A feature of Colin's talks is the practical, down to earth and comprehensive way that he approaches a subject. This session was no exception and everyone left at the end knowing considerably more about the subject than when they arrived.

Ways of joining wood and how to mount it on the lathe without splitting, including some of Colin's ingenious home-made devices for the job, were all discussed and demonstrated at length.

Turning four pieces of wood to make really striking items involved some complex turning techniques which Colin made to look simple. Some very impressive items turned by him were included to illustrate how it is done.

On the last Saturday of November we had another treat, this time at

Don White's workshop. Six members learned how a professional production turner makes items such as scoops, cord pulls, door wedges, foot rollers, pens, grass pots, boxes, platters and bowls quickly and to a very high standard.

Each of us picked up dozens of useful tips of "how to do it" during this workshop session. We all make the items that Don showed us but never as quickly, calmly and methodically. We also had a demonstration of Don's new VB36 Bowl Turning Lathe, a superb ash salad bowl in his own inimitable style being the result.

One very cold December morning saw a party of 13 (fool)hardy members make a journey in the frost to "Interesting Timbers" at Compton Martin high in the Mendip Hills south of Bristol.

Dave Simmonds, the owner, first had the job of finding some unfrozen water for some coffee which he kindly offered us later, together with mince pies, following a tour of the farm. A collection of small farm buildings houses his wide range of timbers suitable for turning and woodworking.

Many of us took the opportunity to look at Dave's stock more closely and take advantage of some reasonably priced items. The morning proved interesting and opened up another source of the woodturner's raw material - wood.

Just before Christmas all members were cerebrally challenged as our brains began to ache with the unaccustomed effort of thinking in the evening! Simon Keen had once more managed to think of some new items to test our knowledge of woods and anything connected with woodturning in the Annual Christmas Quiz.

The anagrams appeared tantalisingly easy but still several answers eluded us. Our knowledge of woods beginning with the letter X was sparse! It was also amazing how wood samples can look so different when placed on a table in a quiz.

The whole session was thoroughly enjoyable, including mince pies and coffee, and it was satisfying to go home having learned something and knowing that Simon's hard work had all been worthwhile.

The last three Branch Meetings of 1996 highlighted what a wealth of talent we have within our membership. We look forward with great optimism to what the new year holds for our Branch and its members.



New Junior Member

We have been very pleased to welcome a number of new members recently. One of them, Keith Dowley, who is still at school, aged fourteen, is very keen to improve. A Committee decision resulted in the club sponsoring his membership for the coming year.

Annual Competition

Each year we arrange a social evening at which the entries of all the categories can be viewed, judged and admired. This year we had three categories to enter, Advanced, Intermediate and Novice. The prizes of £15, £10 and £5 were donated by Alan Holtham of The Turnery Old Stores, these prizes are awarded to the Novices. The judge was our well loved old friend Graham Hughes, from the Rugeley club. Branch Committee member, Graham Lovett and Lorraine were our guests.

The winners were as follows:

Advanced:- First - Tom Buttress
Second - Alan Calder
Third - Steve James
Intermediate:- First - Alan Keay
Second - Gordon Howell
Third - Graham Bailey
Novices:- First - Arthur Hickson
Second - Barbara Fishburn
Third - Leslie Stott

The subject was "An item that contains between centres work."

We were disappointed by a low turn-out, yet it was a great evening with friends, good food and the excitement of the competition.

Hanley Library Exhibition

The staff at the Library, asked us to put on another show, as the one in the summer had been so successful. It had been remarked on by many of those borrowing books and there was always someone looking at our work. So on Dec 16th, at 9.00am, the Chairman, Treasurer, Secretary and a committee member started to arrange the member's work. The exhibition continued until January 6th

Overhead Mirror

The day Ken Allen brought us the overhead mirror, our lives have been changed. It took a fair bit of manoeuvring to get a view of the lathe rather than the back of the demonstrator's head, but now we can see so much more. Thank you Ken!!



At the AGM on 10 January, Chairman Ken Allen reported another good year with a further encouraging increase in membership

A number of successful events took place in 1996 including the Brownhills exhibition in March, masterminded by Doug Birch and the open day at the chairman's home in June with demonstrations by Jan Sanders, Reg Sherwin and Alan Hewitt. In November, the club held a full day's demonstration by Allan Batty for which there was a good turn-out by members and visitors alike. All were rewarded by one of the most enthralling and fascinating demonstrations of professional skills, talents, and "tricks of the trade" it will ever be their privilege to experience. Thank you Allan and Roger on Warwick.

During the year, sales of items,

donated by club members, raised over £150 -for the Air Ambulance Appeal Fund. 1996 was also a good year for club members in National competitions with a First Prize being achieved at Wembley in February and a First, Second, Runner up and also People's Choice being awarded at the NEC in October.

For this new year, we are already busy with arrangements for a repeat exhibition at Brownhills' Community School on March 7, when three lathes will be manned for the full evening. As last year, the exhibitions and demonstrations will be shared with Members from the West Midlands and the South Cheshire and Staffordshire branches. The charity nominated for our support in 1997 is Age Concern.

A new venture being planned is an exhibition and demonstration in Stafford's Ancient High House on Saturday February 15, and Saturday March 15 1997. This will form part of an overall "Holiday Information Exhibition" which this year is focusing on Country holidays and Country crafts. Monday February 17 will also see us demonstrating here as part of the relevant activities during the local schools' half term break.

Stafford's Ancient High House is perhaps the County town's most important building with a long history extending over 400 years. Readers may be interested in the reprint of a woodcut showing the house as viewed from the town's main street.

THE ANCIENT
HIGH HOUSE



STAFFORD



East Surrey Woodturners

1996 turned out to be another year when we made further advances in branch activities. Our membership having grown to more than fifty members. Our star activity was the successful ESW open day on 23rd November where more than three hundred people came to see what we were all about. We are planning another open day for 1997 and will try to avoid other well established activities such as the Good Woodworking Show. We would remind the association that we do have access to a regular meeting place, The Edgecoombe Centre, Monks hill, Selsdon. Here the branch meets on the last Thursday of each month. Not as formerly displayed in earlier issues of *Revolutions*. The only exception to this is during December when we have a Christmas meal somewhere else. Visiting demonstrators for 1997 on Thursday evenings will include Stuart Mortimer, Ian Sandford and Gary Rance. Other evenings will be taken up by our own members. We are also able to use the Edgecoombe Centre on certain Sundays and we are planning some hands on activities to make use of some Sundays. The first of these was on 24th November when Melvyn Firmager guided some of us through his techniques. That day was an enjoyable one and useful in many ways despite the fact that we experienced a 20 minute power cut, during the afternoon. Again we thank Melvyn for his support for both the 23rd and 24th November. We have been able to make good use of the overhead mirrors which we collected from Fakenham during the Autumn. These were primarily for use at our open day but they have been successful on other occasions too. Now we can all see what is being demonstrated. One last thing which I thought was quite humorous. Whilst taking my usual weekly deposit of shavings to the local tip, I put them into a container set aside for materials that can be composted.

The container is clearly marked For kitchen and garden waste. No logs please over 4" in diameter. Well that's quite clear. However it was also clear to the angry council official who shouted at me 'Can't you b' well read? that's for garden rubbish not sawdust. Ah well that's politics. East Surrey Woodturners would like to wish members of the Association a happy and successful New Year for 1997.



Cumbria Branch

Geoff Campbell, our Secretary died on the 28th November 1996. The announcement was sadly too late to be included in our recently printed Newsletter.

Geoff was elected as Secretary in April 1992. Since then he has been the CWA's 'king-pin', organising and bringing together all our various activities. His clinical and analytical approach to the Secretary's role, no doubt reflecting his previous life with the Liverpool Constabulary, brought benefits and continuity to our humble organisation.

Geoff thoroughly enjoyed his new found hobby of woodturning and raised his skills to compete with the best. His enthusiasm with the 'impossible' was very evident with his pursuits into the most intricate of designs. This enthusiasm soon reflected itself on new and/or the uninitiated turner joining our group.

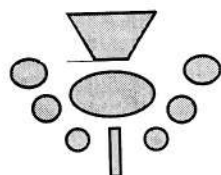
Our Sincere Condolences are sent to Val and his family, with the certain knowledge that Geoff was admired and respected by us all.

Plans for 1997 include

February 22 Pole-lathe turning demonstration by Paul Girling 10am to 2pm at Burnside Village Hall

March 15 Turning demonstration at John Ruskin School, Coniston 10am to 4.30pm.

April 19 AGM & Toy Competition at Burnside Village Hall



SCOTSWOOD

AUTUMN SEMINAR

Our AGM was held during our autumn Seminar in October at our "home" venue of Inver. Brian Page was re-elected as Scotswood Chairman, having stood down as part of our three year cycle for serving members of the committee. A wide range of issues were discussed in, as always, a very good humoured way.

The AGM was followed by a demonstration by Jimmy Clewes, from Craft Supplies.

On a competitive note Norman Halcrow, one of our senior and very experienced members, generously donated a piece of work, made by himself and named "Dorothy's Rosewood Bowl". It will be awarded at our Spring and Autumn Seminars to the Member whose work is selected by our guest demonstrator, after considering our display of work. The Bowl will be held by the winner for the period between seminars. The only rule is that the Bowl cannot be awarded to the same person on consecutive occasions

DATA PROTECTION ACT

Details of Scotswood members are held on a computer, for mailing purposes and to allow contact to be made with others in the Local Groups. Information will not be passed or sold to third parties but may be used for administration purposes as deemed fit by the committee. If you object to your details being held on a computer please advise the Scotswood Secretary IN WRITING.

NOTICE BOARD

- 1) Request from Tony Davidson for quality work for Woodgallery "outside Inverness" contact him on 01463 78 2091
- 2) Spring Seminar date almost certain to be Saturday 29th March 1997 with Hans Weisflog as guest demonstrator. Full details and booking form will be sent out as usual.

WOODTURNING SEMINAR SAINT GIRON, ARIEGE, FRANCE

5TH, 6TH, 7TH, MAY 1997

This is a new venture to increase the awareness of woodturning in France. It is being organised by Intercraft, which is a non-profit making Association formed in France to encourage and promote craft in France and internationally, with the support and advice of the Association of Woodturners of Great Britain.

Demonstrators will include David Ellsworth from America, Melvyn Firmager, Ray Key, Dave Regester and Gary Rance from the UK, Richard Raffan from Australia and Jean-Francois Escoulan, Pierre Llop and Christophe Nancey from France.

There will be a full programme of woodturning demonstrations (including one in the 18th. century

style), slide displays, talks and an instant Gallery of the work of delegates.

The AWGB will be well represented by providing an advice clinic on all aspects of woodturning together with a comprehensive display of the work of AWGB members.

The venue for this seminar is situated at the foot of the Pyrenees in wonderfully picturesque surroundings. The nearest city and airport is Toulouse.

Further information can be obtained from :

Colin Kentish, Le Soumet d'en Bas,
09230 Bedeille, France
Fax No. 0033 0561 96 44 06

Did You Know...

Reprinted from Cumbris Branch Newsletter

Jarrah

The South West corner of Western Australia is the only place in the world where Jarrah is to be found. It takes approximately 300 years to mature and reaches a height of up to 50 metres.

A beautiful wood with colour ranging from light pink to dark brown, its grain, strength and durability makes it unique. In the early days of the colony it was used as railway sleepers and electrical insulators. The latter because of its tendency to char rather than burn.

Also known as West Australian Mahogany!

SPRINGBOK CRAFTS

The Stables,
Morden Hall Park,
Morden Hall Road,
Morden, Surrey SM4 5JD
0181 669 3518 (evenings)
(answerphone daytime)

English Hardwoods for Turners

Blanks in various sizes

Supplied by British Gates

Multi-star parts available at discount prices

Lessons by Appointment

Closed Tuesdays

Controlling Dust

by Jack Elliott

Background

For the last 25 years I worked in powder technology, grinding, sieving and blending all types of powder and developing systems for handling powders and dusts of all kinds, i.e. Chemicals, pigments, foodstuffs, pharmaceuticals.

I also invented, many of systems now commonly used, and patented an ultrasonic system of sieving fine powders.

Causes

Surprisingly, the supreme dust generator in a woodturners workshop is usually the so called extraction system!! The more powerful the system, the more dangerous dust is generated.

People usually advise on dust problems after they have bought and installed an extractor system.

The most popular method of collecting chips/dust from woodworking equipment, lathes in particular, is to use a low velocity - high volume suction fan. A cowl is usually fitted at some convenient point behind the work. Whilst turning a percentage of chips (up to 50% with luck) is drawn through the cowl and a large bore tubing to the extractor unit.

The finer dust, created by sanding or scraping drier woods is not collected as efficiently as the chips because, the spinning object being worked on, generates a boundary layer which causes the heavier particles to be centrifuged off the workpiece, mostly downhill, and the low velocity system has not got the power to re-entrain it and take it to the extraction unit.

Suggestion 1

Fit your collection cowl/pipe under the bed bars. Fix a board behind the lathe to arrest the chips and direct them down to the cowl. Doing this should raise the efficiency of the pick-up by 50%. Fitting the cowl under the bed bars will also entrain some of the dusty air away from your face.

If you have any doubts on entraining dust, think of sucking out a candle.

The next point of call for the chips and dust is the fan. In the vast majority of units the materials being conveyed are passed through the fan blades, which whether plastic or metal, have more than sufficient power to grind the chips down to around one third of the size they were when they arrived at the fan. This process also breaks off the spiky bits from the chips and increases the fine dust particles by a factor of at least twenty!!!. It is thought that the finer dusts pass through the fan unaltered.

Suggestion 2

Now on to the collection system

Assuming that the fan unit will generate 1000cfm, and allowing for 50% efficiency, losses caused by pipework friction, mostly bends, and air being displaced by chips and other factors such as back pressure, the collecting system has to clean 500cfm of dust laden air.

Fit an inertial collector, such as a simple bin or cyclone before the fan. All collection systems have a so called filter bag which can also double up as a dust collector. The better systems have a collection bag under the unit, usually plastic, or a bin with a separate filter bag to allow the 500cfm of air to pass through and retain some efficiency at the pick up point.

Some filter bag cloths are a little more efficient than others for a short while but after a few minutes running time the differences are minimal.

To prevent filter blockage therefore, the cloth has to have a very open weave or to have a huge area. Usually of weave of 50-75 microns is employed.

The dusts which effect the respiratory system are thought to be sub 20 microns. Remember the drier the wood the higher the quantity of finer

dust is generated. One ounce of 20 micron dust has a surface area, probably greater than a large dance floor.

One has to realise that all plant materials, using natural selection, developed toxins to prevent themselves being eaten by insects, animals and other organisms. This statement holds true as much for lettuce as for trees. How many insects like lettuce? Before paranoia sets in, let me suggest some methods of alleviating some of the problems.

1. If possible fit the extractor unit outside in a ventilated container. The great advantage of this move is to almost cure the dust problem in the workshop. The only disadvantages are that the heat from the workshop is also removed, and, the noise factor may have to be dealt with for your neighbours sake.

2. Fit a plastic bulkhead outlet to the filter bag (top) and pipe the dust laden air into a container of water via a watering can rose. This system is not only efficient at removing the dangerous dusts but also raises the humidity in the area, soaking the very fine particles.

3. The suppression system which seems to give me the most immediate benefits, by removing breathable dusts and volatile chemicals was to fit a cheap cooker hood (MFI disaster area £20) with the filter removed. At face height and just behind the lathe this unit is better at collecting dust than my lungs and benefits me by being three speed and giving more light where needed.

4. Again using a cooker hood. If your chip extraction cum dust generator must stay in the workshop, why not box it in and fit the box with a cooker hood to blow the dust outside?

To conclude, I am sure that some of you have your own solutions to this and other problems, why not pass your ideas on and let us all benefit