



Woodturners

# Revolutions

Issue No 39

November 1996

Newsletter of The Association of Woodturners of Great Britain



## Burr elm dish

Made by Ray Key

Exhibited at the 1995 International Seminar



# The Chairmans Page(s)

These notes come at a time when most of you are at your most active, where woodturning is concerned. The light nights and all those summer activities that keep you from the workshop have gone for another year.

So its mounds of shavings time, plus some wonderful work I trust.

It does not seem three months since I last sat down and wrote what has become my updating overview of many of the AWGB activities, I will try and give you a picture of some of what has happened in that time.

Your Committee met on September 15th and meets again on November 17th. It is a little unfortunate that a number of items on that agenda can not form part of this report, (*due to deadlines*) still I guess they will give me the basis for much of my report in February.

In recent months tremendous job pressures and changes, closure threats etc., have not made things easy for a number of your committee in their daily working lives,. It is to their great credit they are still contributing so much to the AWGB's cause.

I would just like to remind you that each and every one of us gives of our time voluntarily and freely. The AWGB at this time has a good team, it is just that our normal daily work gets in the way sometimes.

## THINGS PAST OR CURRENT.

### NORFOLK SEMINAR:

It was my pleasure along with Stuart Mortimer, Gary Rance, Chris Stott, and Rose-Marie Yeh, to be a presenter at our Norfolk Branches bi-annual Seminar, back in August. This was their third such event, held at Fakenham High School, a full and

varied programme was arranged, a good trade show, plus a fine display of delegates work.

The organisation, from the catering down to the presenters needs was first class, nothing was too much trouble. A tremendous team spirit was much in evidence and the one hundred plus people who attended must have gone away feeling it was a day well spent.

All in all the whole event was a great credit to the Norfolk Branch.

### RAFFLE:

If we have offended anyone by sending you raffle tickets, I apologise on behalf of your AWGB Committee. The whole idea was to help celebrate the AWGB's 10th Anniversary and provide some wonderful woodturning related prizes. The main complaint we have received, is that there are **NO** non woodturning related prizes, making sales to non-woodturners difficult. Those who find sales hard could try big Frank Clarke's ploy, if you win the Graduate Lathe, I will buy it off you for £1000, now there's quick thinking, I ask you, would you buy a used car from this man.

Remember the draw will take place at the Wembley woodworking show on Saturday 1st of March. Just get your money and counterfoils back to our Treasurer prior to then.

### SHOWS:

#### Sandown Park:

A number of people have commented that the AWGB were not at the Sandown 'Woodworker' Show. We were asked, but declined, for two reasons, the negative response of the public in 1995 and the fact that the NEC show was the following week. Two shows back to back really was not on.

### NEC:

This show proved once more to be an excellent event for the AWGB, seventeen new members recruited, and tremendous interest through-out the three days provided very few quiet moments for those involved.

An excellent and varied display of members work was mounted and the clinic was as popular as ever, this seems to be a great hit with the public.

There were a number of firsts on our stand, the new Marler Hayley display equipment, this was voted a hit by both the public, and those erecting and dismantling it. Also a Dymo labelling system was used for the first time, plus the provision of wooden card holders. All works carried the name of the maker and details about the piece, (*its been done before, but not this way*) these changes made for a very professional display.

I would like to offer my sincere thanks to all of our members who manned our stand and were involved with the clinic, you made an excellent team, we can't do these things without your commitment. My special thanks go to committee men Graham Lovett, Len Grantham and Peter Einig who were on the stand through out, Graham being the co-ordinating king pin. Last but not least the traders who provide so much, Myford for the lathes, Goodwood Timber and Craft Supplies for wood, plus all those others who we beg tools, chucks, finishing materials etc. from. Thank you.

### Competition:

The AWGB's Publics Choice Trophy, has again, I am pleased to say been won by one of our members, namely Gordon Fradley, for his group of lidded pomanders. I can tell you they were every bit as good as they looked, as a judge I had the opportunity to examine them closely, something the public does not have the chance to do.

### Westonbirt:

September 7th-8th saw our Avon & Bristol Branch fly the AWGB flag at "The Festival of Wood", show a major

*Continued on Page 4*

# The Association of Woodturners of Great Britain

## Executive Committee

### Chairman

Ray Key, The Firs, 53 Weston Road,  
Bretforton, Nr Evesham. WR11 5HW  
Tel: 01386 830142

### Vice Chairman

Chris Lindup, 38 Barry Road,  
Oldland Common, Bristol, Avon. BS15 6QY  
Tel: 01179 325477

### Treasurer

Len Grantham, Spindles, Cooper Close,  
Poplar Farm, Nettleham, Lincolnshire LN2 2XX  
Tel: 01522 595660

### Secretary

Peter Einig, Keepers Cottage, Lee, Ellesmere,  
Shropshire SY12 9AE Tel: 01691 622715

### Trade & Business Liaison

Frank Clarke, 81 Knightwood Crescent, New  
Malden, Surrey. KT3 5JP Tel: 0181 942 5463

### Branch Co-Ordinator

Ken Allen, 90 Peakes Road, Etching Hill,  
Rugeley, Staffs. WS15 2LX Tel: 01889 570373

### Newsletter Editor

Mike Dennis, 72 Hawes Close, Northwood,  
Middlesex, HA6 1EW Tel: 01923 829844

### Exhibitions Co-Ordinator

Eric Ditchfield, 8 Bloomsbury Court, St Lukes  
Square, Guildford, Surrey GU1 3NQ  
Tel: 01483 454226

## Branch Committee Members

### Scotswood

George Hunter, 3 Dundas Avenue.  
North Berwick, East Lothian. EH38 4PS  
Tel: 01620 892293

### Suffolk, Essex & Cambridge Borders

Tony Witham, 39 Horsey Road, Kirkby-le-  
Soken, Frinton-on-Sea, Essex. CO13 0DZ  
Tel: 01255 671697

### West Midlands

Graham Lovett, 66 Beachcroft Road, Wall  
Heath, Kingswinford, West Midlands DY6 0HX  
Tel: 01384 277398

### Worcestershire

Richard Barnes, 67 Teme Crescent, Droitwich,  
Worcestershire. WR9 8UB  
Tel: 01527 570128

## Contents

Chairmans Page	2
The Association of Woodturners of Great Britain	3
Editorial	5
The quality makes all the difference	5
A cautionary tale	7
Colin Ryan	8
Letters to the editor	9
Seminar information	10
Raffle tickets	11
AGM notice	13
News from the Branches	14
Who'd be a woodturners partner	19
The Middlesex barbeque	20
Turn East reports	22
Good Woodworking Show	23
Creative Woodturning Seminar	24

**Articles, letters, tips, adverts etc featured in this Newsletter do not necessarily carry the endorsement of the Association of Woodturners of Great Britain.**

## DATA PROTECTION ACT

If you object to your name, address and telephone number being held on a computer belonging to the AWGB, then please write to the Secretary. (Address Opposite)

The following woodturning videos are available for hire to members.

Turning Wood	Richard Raffan
Turning Projects	Richard Raffan
Bowl Turning	Del Stubbs
Hollow Turning	John Jordan
Bowl Turning	John Jordan
Cutting & Sharpening	Chris Stott
Turning Bowls	Chris Stott
Turning Boxes	Chris Stott
The Basic Box	Ray Key
The Capsule Box	Ray Key
The Finial Box	Ray Key
A Course on Spindle Turning	Ray Jones

Slide Packs of the 1989, 1991, 1993 Loughborough International Seminars. - Slide Pack of the Hay-on-Wye exhibition

To hire any one video or one slide pack, Please send 2 cheques one for £5 for one week's hire and one for £30 as a deposit which will be returned on the safe return of the video or slide pack.

Please make both cheques payable to AWGB.

Application for hire should be made to: Ken Allen (Address Opposite)

## AWGB LAPEL BADGES

(Brass & Enamel)

Send Cheque etc, to:

Frank Clarke (Address Opposite)

COST £2.50 inclusive of post and packing

MAKE ALL PAYMENTS TO AWGB

**Copy deadline for the next edition of  
Revolutions  
15th January 1997**



display of members work and demonstrations were seen by thousands over the weekend. A very positive spin off from this, was that the Non AWGB Affiliated Gloucestershire Association of Woodturners were also in attendance, and the two groups hit it off well.

#### **BRANCHES:**

Growth again in this direction I am pleased to say.

Colchester Woodturners are formed and fully affiliated, Tony Witham has done a great job here.

Graham Lovett reports on Oct 12th Coombe Abbey Woodturners, of Coventry were formed, they will become a fully affiliated group on Jan 1st 1997. This now makes twenty five groups that will be fully affiliated, and there are a number of others in formation.

Our twenty page Branch Start Up Pack is still in great demand, seven requests for these at the NEC. We know a number of groups have been set up using this information, but sadly some have not chosen to joined us despite the help.

What I will say is this, the AWGB does a hell of a lot for many turners who are not our members, some may not wish to see it that way or may not even be aware of it, but its true. There are now fifteen Non Affiliated groups who have taken advantage of the insurance package we have negotiated for AWGB Branches, the difference is they pay a premium whereas our Branches have this provided.

I am delighted to say a number of Branches have nominated young members for AWGB member sponsorship, I am sure there will be more in the future.

#### **MEMBERSHIP**

I am delighted to say this continues to grow and is now at its highest level for some years, standing at 1700 at this time.

#### **FUTURE**

##### **ALEXANDRA PALACE Nov 21st-24th :**

This will be the AWGB's first involvement with the 'Good Woodworking Show'. Space will not allow for a display of members work this time round, but the proven AWGB Clinic will be mounted in some safe hands. Peter Einig will be co-ordinating and involved throughout the four days.

Thanks go to Wilson Brothers for the loan of Graduate lathes, and once more Goodwood Timber and Craft Supplies for wood supplies.

Don't forget you can get £2 off advanced booked tickets as an AWGB member, refer to the coupon on page 23 of your last issue of 'Revolutions' No 38.

This is 50p extra off the normal advance ticket price, remember the AWGB managed to get the same deal for you for Sandown Park and the NEC. This all part of our trying to offer a better service to you.

#### **YOUTH LATHE LOAN**

We will be considering the first nominations for this lathe at our committee meeting on November 17th, we had intended to make this decision at our last meeting. But notification time was thought to short and clarification requests had also been received. A clear application form has now been drafted and sent to all Branch Secretaries, individual members can request these from our Secretary Peter Einig.

#### **MEMBERS HANDBOOK**

This has now been printed, and will go to all **NEW** members when they join, this gives all the relevant information required at that time. (*No its not a Members Directory*). Put simply it gives the names and addresses of the Committee, Branch information, the Constitution, Insurance details, Video hire etc. etc. This is something we expect all members to be in receipt of in time.

#### **BRANCH CERTIFICATE**

The draft format has been approved

and the fully printed version will be presented to the committee on November 17th. It is our intention that a Certificate to each Affiliated Branches will be with them early in the new year.

#### **MERCHANDISE**

The suggestions received failed to provide any clear consensus of opinion on this matter, a circular embroidered badge came out marginally ahead. Quotations are being sort at this time.

#### **SEMINAR**

The plans for this are now well advanced and the main presenters selected.

The Seminar sub-committee of Len Grantham, Don White, and myself made its recommendations to the main committee on Sept 15th. These recommendations were approved. I would just like to say this, the task of getting a first rate team of demonstrators together does not get any easier. We strive for a balanced team that offers variety, I trust that you will feel we have achieved this once more. At our November 17th meeting, costing proposals will be put forward for approval.

Details of the presenters are provided elsewhere in this issue of 'Revolutions', a full and detailed presentation of how to book your place, the cost etc. etc. will be published in the February issue.

#### **EXHIBITION**

As I mentioned in my last report it was time to put plan 'B' into operation, we are now doing just that. At our September meeting the broad outline of this plan was approved, our November meeting will see us put a lot more meat on the bones and detail into this plan.

A synopsis of our objectives are as follows:

In conjunction with the Seminar we intend to stage a major display of woodturning. **All members of the AWGB** will have the opportunity to



exhibit if they so wish. Those attending the Seminar will exhibit their work in the normal way, the only difference being it will be shown alongside members who are not attending.

Invitations to exhibit work will go to all past Overseas and UK main Seminar presenters (*three demonstration slots or more*).

The Exhibition will be open for the public to view.

From the work on display, a selection panel will select 80-100 pieces of work to go on a National Tour, six to eight venues are envisaged, the duration of the tour to span twelve to twenty four months. That is the bare bones at this time, a heck of a lot of planning and funding is now called for.

#### AGM

The AGM will be on February 23rd 1997, your nominations for all Officer posts, and one ordinary member are called for. Election to these positions is by the whole membership. The Branches need to nominate and elect two representatives prior to the AGM. The details of all the requirements appear elsewhere in this issue of 'Revolutions' This AGM could see the biggest ever changes to your Committee, seven of your ten elected members could be voted out, doubtful but possible. I make my doubtful prognosis on the basis of the lack of nominations in the past. Some of your present Committee I know will be seeking re-election, while others I am not so sure about.

In brief:

**Insurance:** Peter has negotiated the

amalgamation of our National policy saving the AWGB £100.

**Advisor:** Hugh O'Neill has accepted our offer to become an AWGB advisor.

**Video's:** More have been purchased.

**Mirrors:** These have been distributed to the Branches who requested them.

**Forms/Letters:** Have been originated and aimed at Branches, an application form for 'clubs' seeking to become Affiliated, a Welcome letter to new Affiliated Branches, and a Demonstrator grant request form. All put together by Peter, he is making great progress in putting the administration of the AWGB on a more professional footing.

**France:** The AWGB has been invited to take part in a major Seminar type event in the South of France next year, more details have been sort for further consideration.

Well that's the end of this missive, my thanks to all of you who stopped and had a word at the Craft Supplies weekend and the NEC Show.

Enjoy your turning, strive to make the next piece better than the last.

I wish you all a Happy Christmas and A Happy New Year.

Ps. Remember your AWGB subscription becomes due Jan 1st 1997.

Ray Key

## Editorial

What a mess I made of the last issue of *Revolutions*, I can only put it down to the tail end of the illness I was suffering at the time. That's really no excuse and I apologise if it spoilt your reading of that issue.

This issue is larger than usual with 32 pages and I thank those who have sent articles and letters. I welcome articles that highlight possible dangers in woodturning, (see page 7) passing on this type of story gives other turners a warning about possible dangerous occurrences. It is particularly pleasing to see how well the Branches are flourishing. I could still do with articles on 'How I did it' or 'How I overcome a particular problem'.

Due to the pressures both Frank Clarke and I have endured these last few months with our day time jobs and the work that we undertake for the AWGB it has not been possible to produce a calender for next year.

I am at the moment playing around with access to the Internet to see if this can be of benefit to the AWGB. If anyone has any experience in this area perhaps they could let me know. If the trial is successful and you also have access to the Internet then I would have an E-Mail address for you to write to me.

Along with this trial I now have fax facilities. The number will be the same as my home phone number.

Mike



*The Committee would  
like to wish all  
members a Merry  
Christmas and a Happy  
New Year*



# The quality makes all the difference

## A report on the NEC exhibition

by Graham Lovatt

Time again to reflect as another show at the N E C, Birmingham, comes to an end. A show which once again can be regarded as a satisfying success for the Association of Woodturners of Great Britain, despite the general organisation being somewhat lacking, compared with previous years. Nevertheless, as in all similar events, the enthusiasm and goodwill of the participating organisations and trades persons made sure that visitors to the event were informed, entertained and inspired by much of what was on offer.

As far as the Association was concerned preparations for the show started in late June with invites to local Midlands Branches to provide stewards for the display side of our stand, and invites for demonstrators to assist Len Grantham in manning the clinic side of our presentation.

A very important part of the A.W.G.B. stand is the display of members' work.

The response to invitations sent to Branches and individual members was pretty good, 15 Branches submitting work, which together with individual members pieces, resulted in some 62 good quality items of turnery being displayed. For this show it had been decided to replace the old display units with a more manageable, easy erected, updated set of units, and without doubt the acquisition of these showed off the work presented for display to its best advantage, and in a most professional manner. Many compliments were paid to our display, including persons connected with other crafts. In fact a carver from one of the stands commented that "they (the carvers) should have something like it..." As mentioned previously, the quality of work was excellent, and probably some of the best ever displayed, so good, that two of our well respected professional turners commented that

they would have to think of new things to come up with, so good was the design and finish of the work on display. I feel, however, that the two turners and their professional colleagues must take some of the credit for the high standards now being achieved by members of the Association, because of their willingness to share knowledge and give encouragement to others. Surely this is what the Association is all about!

The clinic hosted by Len, ably assisted by Mary King and Alan Jones from the Worcestershire Branch and Alan Hewitt from Staffordshire and South Cheshire, was again a great success with visitors, who appear to appreciate help with their turning problems, and unbiased advice, without the thought that they were being pressured into buying something



*The new exhibition stand*

One thing many of our visitors to the stand did buy though, was the "10th Anniversary" Raffle Tickets, although much of the success of this aspect of our presentation, together with new member recruitment and general promotion of the AWGB was down to the team of stewards on duty during the show. Many thanks to Alex Hood, Geoff Newman, Dave Wood, Don Moore, Les Collett, Isaac Foden (West Mids), Tony Stratton, Alan Griffin, John Millward (Worcs), Ron Barnsley (Mid-Staffs), Doug

Hancock, Alan Keay (Staffs and South Cheshire) who did an excellent stewarding job. Thanks too, to Peter Einig, the Association Secretary, for all his help before and during the event.

A total of seventeen new members joined over the three days, and many enquiries were made about setting up new Branches, in areas where there appear to be many turners, but no Branch to support them. As in previous years new friendships were

forged, old ones renewed, and there was the opportunity to meet woodturners, who, for what ever reasons, are not part of the AWGB and possibly never will be, but at least we can talk in a friendly manner. Different opinions, yes, but at least we can talk.

Woodturning is in the ascendency and it is very satisfying to be part of it. See you next year!!!

## A Cautionary Tale

There was this lovely large and irregular chunk of Burr Acacia. The trouble was that it had some large bark inclusions, and a more timid turner might have divided the piece up into a number of smaller sections. However, our turner friend has a very heavy professional variable speed lathe bolted down to a solid concrete base, so he fixed a large faceplate to the wood using larger than usual screws, set his machine to its lowest speed and cautiously began to turn. Being a careful chap he was wearing safety gear, in particular a ventilated helmet powered by a belt mounted battery pack. For a while all went well and the job began to take shape. But then he dropped a tool onto the floor. As he bent down to pick it up, the cable from the battery pack to the helmet just caught on the speed control knob for the lathe. Instantly the lathe accelerated up to its maximum speed of some 2000 RPM, and our friend accelerated too. Fortunately he had not shut the door to his workshop, and was able to rush outside, surrounded as he went by lumps of Burr Acacia flying around his ears. His wife happened to be looking out of a house window at the time, and she swears that our friend's feet did not actually touch the ground until he had covered quite some considerable distance towards the house. She had never seen him move so fast before! Our friend dared not go back to turn the machine off, so he went indoors and had a cup of coffee. Only when the noise of flying

timber had stopped did he eventually pluck up the courage to go back into his workshop and stop the lathe. He found that fortunately not a great deal of damage had been done by the flying timber, and the robust lathe was none the worse for its adventure, so he proceeded to collect the bits and to turn them into a fair number of smaller items. He doesn't waste much! Talk about living dangerously!

The above true story prompts the following. This is not a tip about something you could try, but rather one about something which you should not try. Another well known member of the AWGB wanted to fix a glue block to a sizable bowl blank,

when his eye fell upon a scrap of thick MDF, so he made his glue block from that and glued it onto the blank. At first the turning went well, then suddenly the glue block split without warning, and our fellow turner found himself being chased around his small workshop by a spinning bowl blank. Again, fortunately no great damage was done, but it might have been much worse. If you take a scrap of MDF and drive a chisel into it edgeways you will see that the stuff is made up of a very large number of thin layers of wood fibres, making it very weak in that direction, and this is what had happened to the glue block. We live and learn, or should it be that we learn and live?

**SPRINGBOK CRAFTS**  
The Stables,  
Morden Hall Park,  
Morden Hall Road,

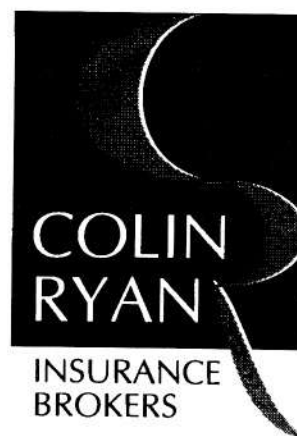
Morden, Surrey SM4 5JD  
0181 669 3518 (evenings)  
(answerphone daytime)

**English Hardwoods for Turners**  
**Blanks in various sizes**  
**Supplied by British Gates**  
**Multi-star parts available at discount prices**

**Lessons by Appointment**  
**Closed Tuesdays**



**Correspondence**  
P O Box 110, Ipswich, Suffolk, IP2 OBN  
**Telephone Calls**  
Ipswich (01473) 343434 Fax (01473) 225120  
**Personal Callers**  
21-23 Princes St, Ipswich, 156d High St, Colchester,  
23 Orwell Rd, Felixstowe or 60 Station Rd, Clacton



Dear Editor

I would like to express my thanks on behalf of Colin Ryan Insurance Limited to Mr Albert Lain of Mid Suffolk Coastal Woodturners for introducing us to the Association of Woodturners of Great Britain.

It is a relationship which we believe has already been of great benefit to both ourselves and your members. To date we have written policies for 134 of your members and for 23 Affiliated branches and 15 non-affiliated groups.

Not only have they made huge savings on premiums - and indeed many have written to us expressing their thanks - but we have also been able to offer wider cover. Members who teach can now obtain cover for their professional liabilities - a facility not normally included in Public Liability Policies.

In recognition of Mr Lain's efforts, we recently presented him with a framed cartoon which is reproduced here. Members will no doubt be reassured to discover that in such an eventuality they have all the insurance cover they need.

We look forward to many happy years working in partnership with your Association.

Yours faithfully  
Ian Thurgood  
Insurance Scheme Co-ordinator for the  
Association of Woodturners of Great Britain





Dear Mike

Many thanks! I'm delighted to have made the front cover of 'Rev' No 38. I regard it as a great honour. For the puzzled chess players there are six different pieces to any chess set and the photo showed the patterns of two sets, - a polyester-resin Staunton set and the ornate Copenhagen/Tulip set.

My main reason for this letter is that within the pages I am described as approaching the time for "easing into retirement"! In my philosophy one is either working or dead. There are trades where the strength and stamina demanded call for retirement before senility approaches, but

turning - especially my sort - is not one. If I can stand up I can turn, and if clubs are prepared to transport the old bones and the old tools there and back, old Bill will oblige and feel highly honoured. Indeed, I feel it would be discourteous to decline and my enthusiasm which results from being used in this way certainly pushes retirement right off the map! Who the hells got TIME to retire - let alone money?!!

So - lest clubs should be thinking I am easing into retirement, forget it! All the while I have the strength to wield my pound and three quarter hammer, you'll get a Bill Jones performance and you'll know you contributed to the longevity of the undersigned.

It is getting into a rut that shortens life and I am happy to say I hope to continue for yonks growing old disgracefully.

Your friend

*Bill Jones*

Dear Sir

#### ELECTRICAL SAFETY

Having a basic knowledge of Health and Safety, I was reasonably confident about the safety aspects of woodturning. However, having just moved house, I thought it might be helpful to pass on to members the benefits of a recent experience.

Dismantling my workshop (garage) it was necessary to disconnect various electrical connections, including the wiring to the lathe motor. The amount of dust that had penetrated even the (apparently) well protected connection was alarming. I would therefore strongly recommend that members give some thought to carrying out a check on the many and various connections in their workplaces, especially 'upside' down' plugs (wiring entering downwards). Whilst they're at it they might care to check the tightness of the lathe fixing bolts.

Yours Faithfully

*John Lowe*

**ARTI  
SAN**

## ARTISAN 1997.

Dates 21-25 August, 1997

### Artisan is the working title for the EDINBURGH FESTIVAL OF CONTEMPORARY CRAFTS

This will be a major crafts event standing alongside CHELSEA, ART IN ACTION, COUNTRY LIVING AND 100% .

This innovative juried Festival will co-exist alongside all the other Edinburgh festivals as a major new addition to the attraction of this city at "Festival Time". Unlike the aforementioned events, this will be held outside London and the Home Counties, offering "home advantage" for the first time to Scottish-based makers of quality. Building on the work done earlier this decade, by The Tent, Artisan is on a totally different scale, with a marketing budget in the many tens of thousands of pounds and a superb venue - the Edinburgh International Conference Centre - added to the professionalism of the directors, who include Tony Gordon of DAZZLE Jewellery exhibitions and Michael Dale former Director of the Edinburgh Festival Fringe and the Glasgow Garden Festival and with substantial financial support from the Scottish Arts Council.

It will be more than just a juried craft event - there will be a bias in future years, in favour of those who exhibit this first time - ( jury includes Emanuel Cooper, Philip Hughes, Faith Shannon and Jilly Cooper ) with exhibitions and masterclasses and a full education programme to include video presentations by makers using the high tech facilities of this splendid venue. Wide aisles, excellent catering and massive publicity, allied to the high standard of exhibitor, stands it apart from any other comparable event held in Scotland.

Last date for receipt of applications is December 31st but there is a limited number of application packs - such is the early interest shown, that almost 2,000 packs have already gone out - so contact ARTISAN on

P.O. Box 12794, Edinburgh EH7 5ZA. Fax 01580 852550, telephone 01580 852112.

# AWGB INTERNATIONAL 10TH ANNIVERSARY WOODTURNING SEMINAR 1997

**August 8th 9th 10th 1997**



**Venue:**  
**University of Warwick**  
**Nr. Coventry, Warwickshire.**



## **MAIN PRESENTERS**

**David Ellsworth - USA**

The pioneer of enclosed forms through very small holes.

**Stoney Lamar - USA**

Uses the lathe to produce very sculptural work.

**Hans Weissflog - Germany**

The master box maker.

**Vic Wood - Australia**

Pioneer of square edge bowls and mammary boxes.

**Allan Batty - UK**

Excellent all rounder, will specialise in spindle work.

**Anthony Bryant - UK**

Large thin walled wet bowls are his forte.

**Ray Key - UK**

How did he get in here. Ouch! they twisted my arm.

**Stuart Mortimer - UK**

The 'twist king' spirals and lattice work.

**Phil Reardon - UK**

The 'Jester' a tremendous talent, animation toys.

**Jules Tattersall - UK**

The man who introduced grass tree to the UK  
will demonstrate vessels and bowls.

These are the ten main presenters, others will be added. Subjects like safe chain saw use, how to photograph your work, panel discussions and many other things will make this a very full and varied programme as always. There will of course be members one slot speciality presentations also.

***This is just the taster more details in next 'Revolutions'***





## Sold those raffle tickets yet?

If you have and would like some more please contact Peter Einig or, if you are a member of a branch, your branch secretary

You may wonder why the prizes are only for turners. We did not think that you would want several books each to go around your family and friends. It is a specific raffle for the benefit of all turners and we were of the opinion that between September and February most members would be able to participate, if they wished. Equally we sent tickets to Branch Secretary's so that they had some ready for those members who wanted to buy some more or knew of other turners who wanted to buy some.

Members, or any other person, under 16 years can not buy tickets by law but younger members who have them with the newsletter can sell them on behalf of the Association.

Tickets can not be sold outside the U.K.- so our overseas members will have to ask a person resident in the U.K. to buy their tickets for them and utilise that persons U.K. address. For those overseas members who wish to buy tickets and you do not have any English contacts, then you can send Peter Einig your tickets and money (in pounds sterling) and he will register your purchase at his address.

All members must note that the first prize is delivered to the UK mainland only.

There are plenty of tickets available and they will be going on sale at the NEC and if we have any left by 1997, WEMBLEY.

It is our intention to draw the ticket on Saturday 1st. March 1997 and try and get winners to the Wembley show on the Sunday afternoon for the presentation, so a phone number will be most useful.

PLEASE do not leave your purchase until the last minute. Send your cheques to Len now whilst it is fresh in your mind. Then you can buy some more tickets next year - provided that we have some left.



# **The International Woodworking Exhibition**

## **The world's Premier Woodworking Showcase**

**Hall One, Wembley Exhibition Centre, London**

**Thursday 27th February - Sunday March 2nd 1997**

**Opening times: 9.30am - 5.30pm daily**

Wembley Exhibition Centre is home to the ultimate consumer woodworking show. With more high quality trade stands, demonstrations, lectures, free workshops, displays and competition entries than any other show, this is THE exhibition for all woodworkers - from the amateur to the professional craftsman.

### **Can you afford to miss it?**

#### **Europe's largest shop Window!**

The widest possible selection of woodworking products is available - from finishes to lathes, power tools to timber, all at unbeatable show prices. Don't miss this opportunity to compare and try before you buy.

#### **The Best Expert Advice.**

The full range of free demonstrations and 'have a go' workshops ensures that no questions go unanswered! This is your opportunity to discuss your woodworking experiences, learn new techniques and enhance your skills from many of the internationally renowned experts.

Turning Demonstrations from Ray Jones and Stephen Cooper

Carving with Peter Berry and Michael Painter

Toy making advice from Geoff Soan

Jack Hills country crafts

Cabinet making demonstrations from Gordon Warr

#### **Magnificent Competition Displays.**

The UK's best examples of craftsmanship on display from the finalists in our prestigious competition. Outstanding work covering all classes will be there for your delectation, including turning, carving, cabinet making, toys and routing as well as the entries in our '2CV model making' competition.

#### **Clubs, Colleges and Associations.**

Your chance to join the clubs and associations, marvel at the specialist displays and demonstrations and talk about woodworking with the experts.

#### **Lecture Programme.**

Free lectures covering a plethora of subjects take place every day, including turning, carving, crafts, furniture and cabinet making.

#### **Craft Fair.**

Take a leisurely walk around the Craft Fair where you will find woodworking and other crafts for sale.

**The AWGB has once again negotiated a discount on admission tickets for its members. Please use the coupon on page 25**



The Association  
of  
Woodturners of Great Britain

**ANNUAL GENERAL MEETING OF THE ASSOCIATION**

Notice is hereby given that the ANNUAL GENERAL MEETING of the ASSOCIATION will be held at:

**HAILEY DAY CENTRE, BELL STREET, SAWBRIDGEWORTH, HERTFORDSHIRE**

on Sunday February 23rd 1997. Commencing at 2 pm. It will be proceeded by a Branch Representatives Annual Meeting which will commence at 11 am

THE ANNUAL GENERAL MEETING will follow the usual pattern of the acceptance of officers reports and elections, plus any Member motions properly presented according to our current constitution

All Executive Officer posts are for re-election and nominations are requested. These posts are for one year except for the Vice Chairman who is voted in for two years. Nominations are also required for one Executive Committee member who will stand for two years

It is important to note that our present Treasurer, Len Grantham, was only co-opted last year as no nominations or volunteers were forthcoming

**MOTIONS AND NOMINATIONS MUST BE IN WRITING AND BE SUBMITTED TO THE HONORARY SECRETARY, KEEPERS COTTAGE, LEE, ELLESMERE, SHROPSHIRE SY12 9AE by SATURDAY 15th DECEMBER 1996.**

As a result of the change to the constitution last year two branch representatives will be elected by postal ballot of all affiliated branches. Branches will send to the Branch Co-ordinator the names of their elected candidate by December 15th 1996. Each branch shall be invited to vote for the two vacancies from the list of candidates by postal ballot (Branch Rule 5). Completed ballot papers must be returned to the Branch Co-ordinator at least one week prior to the Annual General Meeting (Branch Rule 6)

You are reminded that under the existing constitution all nominations (and AGM motions) must be submitted in writing and be signed by the proposer and seconder. Please make clear which position the nomination(s) refer to. Nominations must be accompanied by a 50 word statement from the nominee outlining their background and their interest in being a Committee Member

Committee membership cannot be undertaken lightly There are 6 or 7 meetings a year plus occasional membership of special working parties. Each Committee member has a responsibility for a part of the Associations activities (Branch organisation, various sub-committees, exhibitions, business contacts, Arts and Crafts Council liaison etc). They are also involved in various events and particularly the organisation of the International Seminar.

As you know the Association has tried to keep a balance of professional and hobbyist representation on the committee. Under the Constitution there are four Committee Members appointed through the Branches, the remainder, and all Officer positions are by ballot of the whole membership. Two Branch Representatives will also be elected by the morning meeting.

The agenda, postal ballot forms (if necessary), and travel directions, will be circulated to you with Revolutions at the end of January. We hope that you can attend.

*Peter Einig (Honorary Secretary)*



# Affiliated Branches

- GL** **AVON & BRISTOL**  
**Secretary:** Alan George, 276 Filton Avenue, Horfield, Bristol, BS7 0BA **Telephone:** 01179 697338  
**Meetings:** 3rd Thursday of each month **Time:** 7.30pm **Venue:** Keynsham Baptist Church Hall, High Street, Keynsham Bristol
- TW** **COLCHESTER WOODTURNERS**  
**Secretary:** Wendy Thompson, The Beild, Swan Lane, Stock, Essex. CM4 9BQ **Telephone: (Daytime)** 01206 791697  
**Meetings:** 1st Tuesday of each month **Time:** 7.30pm **Venue:** Copford Joinery, Haven Road, The Hythe, Colchester
- GM** **CUMBRIA WOODTURNERS ASSOCIATION**  
**Secretary:** Geoffery Cambell, Halewood, Glebe Road, Bowness-on-Windermere, Cumbria. LA23 3HB **Telephone:** 01539 442641  
**Meetings:** 3rd Saturday of each month **Venue:** Varies - please write for details
- TW** **EAST HERTFORDSHIRE**  
**Secretary:** Nick Bright, 9 Yews Lane, Sawbridgeworth, Herts **Telephone:** 01279 724038  
**Meetings:** Third Wednesday of the month **Venue:** Please write for details
- RB** **EAST SURREY WOODTURNERS**  
**Secretary:** David G Granger, 290 Addington Road, Selsdon, Surrey, CR2 8LF **Telephone:** 0181 657 1895  
**Meetings:** Last Wednesday of each month **Venue:** Varies - please write for details
- GL** **HEART OF ENGLAND**  
**Secretary:** Marilyn Cox, 12 Fields Close, Badsey Evesham Worcestershire WR11 5JN **Telephone:** 01386 830196  
**Meetings:** Every sixth Friday **Time:** 7.30pm **Venue:** The Scout Hall, Tiddington, Stratford-on-Avon
- R.B** **HERTS & BEDS**  
**Secretary:** Mike Sheaf, 51 Hart Hill Road, Luton, Bedfordshire. LU2 0BA **Telephone:** 01582 36382  
**Meetings:** Second Tuesday of each month **Time:** 7.30pm **Venue:** The Cork Room, Adey Fields Centre, Hemel Hempstead.
- R.B** **KENT BRANCH**  
**Secretary:** Chris Wilson, Longacres, Chart Road, Chart Sutton, Maidstone, Kent. ME17 3RB **Telephone:** 01622 842097  
**Meetings:** Please write for details as date and location vary.
- TW** **MIDDLESEX WOODTURNERS ASSOCIATION**  
**Secretary:** David Harrop, 68 Burgess Road South, Beaconsfield, Buckinghamshire. HP9 1EJ **Telephone:** 01494 678201  
**Meetings:** 2nd Thursday of each month **Time:** 7.30pm **Venue:** Hayes Manor School, Wood End Green Road, Hayes, Middlesex
- GL** **MID MARCHES WOODTURNERS**  
**Secretary:** Paul Balcomb, Bodgers, 5 Caefelyn, Norton, Presteigne, Powys. LD8 2UB **Telephone:** 01544 267010  
**Meetings:** Last Monday of each month **Venue:** Presteigne Memorial Hall
- GL** **MID - STAFFS WOODTURNERS ASSOCIATION**  
**Secretary:** Graham Allen 132 Green Lane, Rugeley, Staffordshire. WS15 2AU **Telephone:** 01889 585037  
**Meetings:** First Friday of each month **Venue:** The Village Hall, Etching Hill, Rugeley, Staffordshire
- TW** **NORFOLK WOODTURNERS SOCIETY**  
**Secretary:** Bernard Rose, 63 Belmore Road, Thorpe-St-Andrew, Norwich, Norfolk. NR7 0PR. **Telephone:** 01603 36990  
**Meetings:** 3rd Wednesday of each month **Venue:** Fakenham High School or Beetley Village Hall, Nr Dereham, Norfolk
- R.B** **NORTH LONDON WOODTURNERS GROUP**  
**Secretary:** Robert Craig, 55 Woodside Park Rd, Finchley, London. N12 8RX **Telephone:** 0181-446 0679  
**Meetings:** Third Thursday of each month **Venue:** Varies - please write for details
- GH** **SCOTSWOOD**  
**Secretary:** George W Hunter, 3 Dundas Avenue, North Berwick, East Lothian, EH38 4PS **Telephone:** 01620 892293  
**Meetings:** Varies - Please telephone for details
- GL** **SOUTH CHESHIRE & STAFFS**  
**Secretary:** Barbara Fishburn, 12 St Leonard's Avenue, Ipstones, Stoke-on-Trent, Staffs. ST10 2 QD **Telephone:** 01538 266468  
**Meetings:** Second Thursday of each month **Venue:** Senior Citizens Centre, Hanover Street, Newcastle-U-Lyme
- TW** **SUFFOLK ESSEX CAMBRIDGE BORDERS**  
**Secretary:** Patrick White, 62 Chapel Hill, Halstead, Essex CO9 1JP **Telephone:**  
**Meetings:** Second Tuesday of each month **Venue:** Peter Childs, The Old Hyde, Little Yeldham, Halstead Essex
- TW** **SUFFOLK MID-COASTAL**  
**Secretary:** Jeff Moss, 29 Barton Road, Woodbridge, Suffolk. IP12 1JQ **Telephone:** 01394 383569  
**Meetings:** First Thursday of each month **Venue:** Village Hall, Marlesford, Suffolk.
- TW** **THAMESIDE WOODTURNERS ASSOCIATION**  
**Secretary:** Alec Owen, 27 Leigh Road, Leigh-on-Sea, Essex. SS9 1JP  
**Telephone:** 01702 73137 (Day) 01702 74757 (Eve's)  
**Meetings:** Second Wednesday of each month **Venue:** Ridley Studios, 27 Leigh Road, Leigh-on-Sea, Essex
- TW** **THE VILLAGE WOODTURNERS**  
**Secretary:** Robin Buckley, 130 Garton End Road, Peterborough, PE1 4EZ **Telephone:** 01733 347296  
**Meetings:** 1st Saturday of each month **Venue:** 103 Garton End Road, Peterborough
- GM** **WEST CUMBRIA**  
**Secretary:** Geoff Robinson 2 Countess Road, Bransty, Whitehaven, Cumbria. CA28 6BS **Telephone:** 01946 691803  
**Meetings:** **Venue:**
- GL** **WEST MIDLANDS**  
**Secretary:** Graham Lovett, 66 Beachcroft Road, Wall Heath, Kings Winford, West Midlands. DY6 0HX **Telephone:** 01384 77398  
**Meetings:** Every 6 weeks. **Venue:** Water Orton Primary School, Vicarage Lane, Water Orton, Birmingham, West Midlands
- R.B** **WEST NORTHANTS WOODTURNERS**  
**Secretary:** Mal Hill, 2 Kings Green, Prior Park, Daventry, Northamptonshire. NN11 4UB **Telephone:** 01327 72982  
**Meetings:** Third Wednesday of each month **Venue:** Long Buckley RFC
- RB** **WORCESTERSHIRE WOODTURNERS**  
**Secretary:** John Milward, 39 Summer Road, Kidderminster, Worcestershire. DY11 7JS **Telephone:** 01562 824428  
**Meetings:** Please contact the Secretary **Venue:** Droitwich High School, Ombersley Road, Droitwich, Worcestershire

**GL** **COOMBE ABBEY**

**GM** **GRAMPIDU**

# News from the Branches

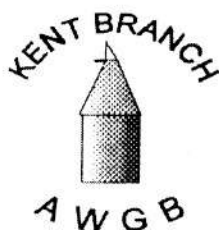


As we approach our second AGM it is perhaps time to reflect on the direction the Club has taken since its inception.

We quickly rose to about 20 active members and decided to restrict membership at that level until the Club established itself. This has been done, and we now meet the first Saturday of each month at 103 Garton End Road, Peterborough. Our meetings are mostly informal with information and ideas being exchanged between members, hands on demonstrations by members and one member setting, by demonstration, the project for the following meeting, where members completed work is judged and constructive criticism offered. This part of our meetings was slow to take off but we now have a good number of project items turned each month and as a result the standard of work within the group has improved beyond all recognition.

During the year we have enjoyed two full day demonstrations. One from Gary Rance and the other from Stephen Cooper. Gary demonstrated the art of producing work quickly and efficiently with the minimum of effort and gave us an insight into the past when production turners were to be found in every village turning anything that was required. Stephen Cooper, on the other hand, worked slowly and with infinite care to produce the paper thin goblets, bowls and vases that he has become associated with. Both days inspired us to greater heights and we look forward to this years A. G. M. when we can set the program of formal events for the coming year.

It is our intention to attract more members during the coming year as we are now confident that we have the structure and facilities to encourage present and future wood turners in our area to join us.



During August we were invited to participate in a craft weekend organised by the Kent Museum of Rural Life, at Cobtree, near Maidstone. Two members brought their mini-lathes, and a rota of demonstrators guaranteed that there were shavings flying constantly throughout the show. Not much was sold, but it was a very good public relations exercise.

Demonstrations were given by Gary Rance in August and by Stuart Batty in September. Both gave their usual polished performances, and everyone went away with plenty of thoughts on what to practice next.

Sandown Park Exhibition. This was rated as a great disappointment by those members who attended. Many of the well-known exhibitors were absent, and everything had been crammed into about two-thirds of the space used in previous years. It is quite clear that there is now a super-saturation of exhibitions, with each organiser trying to see-off the competition.

Surely there is scope for rationalisation, both in the number of exhibitions, their locations, and the time of year at which they are held. If

## EXHIBITION BY KENT WOODTURNERS AT THE APPLE CRAFT CENTRE, FAVERSHAM

**6-15 DECEMBER 1996**

The Kent Branch of the Association of Woodturners of Great Britain will be holding an annual exhibition of members' work at the

### **Apple Craft Centre, Selling Road, Faversham**

This is immediately opposite a large Shell filling station on the A2 if driving from Faversham towards Canterbury

Members from throughout the county will display a wide variety of turned items in many different and unusual woods. These will illustrate well what can be produced by those who are active in this fascinating craft

There will also be a programme of live demonstrations by members during the exhibition. Anyone interested in turning will be welcomed as a member of the branch - beginners or experienced, young or not so young

All items in the exhibition will be available for sale at realistic prices. Admission free. 10am to 5pm

not involved already, could the National Committee of the AWGB bring some pressure to bear on behalf of the people who really matter - the customers, we woodturners - or some parts of the country could find themselves without a regional exhibition at all. The exhibitors must be nearly going mad as well.

At the beginning of October, the Branch was offered the use of two excellent showcases for five weeks in the main entrance hall of the Central County Library at Springfield, in Maidstone. These are well-situated in the main entrance hall and are well-lit; we quickly got together a display of woodturning, woodcarving and pyrography. Some of the woodturning exhibits showed various stages of production from a piece of un-cut wood, through rough-turning, to the finished article. Another good public relations exercise.

In between all these events, our informal Saturday meetings continue and are as popular as ever with members.



## Middlesex Woodturners Association

The Middlesex Woodturners were invited to participate in Woodworks '96 which was a two day wood fair run by Great Hundridge Manor Enterprises near Gt. Missenden in Buckinghamshire on 10th & 11th August '96. Our brief was primarily to demonstrate woodturning, and also to display and hopefully sell some of our work. It should be noted that this was not the usual Craft Fair as it was for wood related activities only. There was much of interest to be seen at the fair, including tree felling, log conversion by a Trekkasaw, and displays by skilled axemen. Timber from the Estate was for sale at reasonable prices, including bowl blanks and turning squares.

We managed to keep up a nearly continuous series of demonstrations throughout the day, using both seasoned and green timber, and were rewarded by much interest from quite large groups of visitors to the fair. Meanwhile sales of work were brisk, and those not demonstrating were kept very much on their toes. All this continued without a break until the visitors began to go home for tea. We closed for business at about 5.30 pm. On the next day we arrived early, and were glad that we had covered up our tables and equipment, as it had rained heavily overnight and some water had penetrated the marquee. We were just about ready when the public were admitted, and from the beginning were even more busy than on the previous day. Continuous demonstrations were the order of the day, right up to closing time, with sales going very well and a high level of interest being shown by the public throughout the day. And, miraculously, the weather stayed fine!

By the end of the day most of our stock had been sold, and much valuable experience had been gained. We were pleased with the interest shown in the Association, and by the number of enquiries we had concerning tuition and commissions which we were able to satisfy. Altogether it had been very hard work for all concerned but a great success. The Wood Fair itself was also successful as a whole, and will be repeated. We hope that the we will again be invited to take part.

Our August meeting was entitled the Mac and Dave Show. We knew that we were in for an interesting evening on timber conversion when Dave Reek s o m e c u r i o u s l y warped and split rough turned pieces of wood on the demonstration bench. It soon appeared that

the evening should have been renamed 'What to do when somebody gives you a tree' Mac Kemp presented illustrated information on how logs are converted to make the best of the wood and to minimise the effects of warping and splitting on drying, and then together with Dave entertained us with much wit and repartee as they bounced ideas and information to and fro and off members of the audience.

November 14th Chris Stott will be our demonstrator for the evening. December 12th will be a bring and sale.



Another good year to report on with our usual monthly meetings.

Our AGM was well attended and after normal business members made their choice for the TURNABOUT meetings. We had 12 presenters for TURNABOUT with topics ranging from "basic tool techniques" to "something surprisingly large".

Other meetings involved members demonstrating the making of Salt & pepper mills, finishing & sharpening.

Tony Witham, our Branch area representative, visited us in June, showing us how he makes fruit. He then gave us an update on AWGB matters.

In May we had a demonstration day



Members of Suffolk Mid Coastal Branch at Apollo lathes



by Gary Rance. This was well attended by members and several non-members. Gary worked non stop producing many items by the close.

In November we are to hold a demonstration day and the following day a teaching workshop day. John Tuck from Norfolk will be the presenter. Several members have seen John working and we look forward to seeing him.

In addition to all of this we have been involved with other events.

In June about 15 members visited North Heigham Saw Mills in Norwich. Coffee on arrival and then Bob Brett took us on a conducted tour showing us the stacking area and the kilns. We even saw some bog oak reported to be about 4000 years old. This was under wraps but we managed to take a close look. Not quite so old and in daily use was the Albion lorry - a fine specimen.

After purchasing timber we were on our way to Apollo lathes. Barry Beck and his wife looked after us. Doris Beck provided us with a huge splendid lunch and then Barry took us to his workshop. John Tuck came along and did some turning using the Professional and Woodpecker lathes. It was soon 4.30pm and time for the homeward journey. All agreed that we had had a truly splendid day.

In August about 8 members attended the Turn East at Fakenham. This was a busy day, very well organised, well attended, one to remember and one to look forward to in 1998. Congratulations to Norfolk Woodturners.

In September several of us visited Diss and District Woodturners at Wilney Green. This was another informative event, in spacious surroundings. We hope to see you again next year.

Of course we managed trips to the national shows and some of us are preparing for the 'Palace' in November.

Regarding membership - this has increased once again and we are now close to 50.



## *East Surrey Woodturners*

Again we have had another successful year with a good variety of topics to fill our, but too short, meeting times. Each month we have had a full and informative talk or demo. Also we have had an open table where the members are invited to display their interpretation on a given theme. For instance in January the theme was 'Things for the kitchen'. It was interesting to learn just what some members had in their kitchens, however the open table has become a useful source of inspiration. Next years programme contains an evening entitled 'Things for the bedroom' that too might be interesting or even dangerous. It might become the time when I should retire from being Secretary and somebody else can think of some original topics.

During the year our membership has grown to more than fifty this includes some lady members and our Junlor section which consists of just one member. We have been quite active, our main highlights being two demonstration days. One in June where we were at the local councils garden depot in Coombe Lane and secondly in August at Selsdon Woods Country and Forestry Fayre. During the year we have begun to produce our newsletter, this is due to an initiative by one of the members. Our contribution to Oaks Park charity continues and there is considerable interest shown in our work. Just occasionally somebody actually buys one of our articles from the craft shop.

On Oct 5th we had a days coach outing to the NEC I'm certain that each member who went would agree that it was a good day. A similar outing is being talked about for 1997. Since the early part of the year we have been planning our first open day. Preparations are nearly ready and our exhibition and open day will take place on November 23rd. Yes

### **THE BETTER WOODWORKING SHOW**

**East Surrey Woodturners**

## **Open Day**

**Saturday November 23rd 10am - 4.00pm**

### **Special visit by Melvyn Firmager**

*One of the "Masterclass"*

Selsdon Baptist Rooms  
Addington Road, Selsdon  
South Croydon

**Variety of Craftwork for sale**

**Trade stands including Poolewood and Craft Supplies**

**Displays of craft work, carving, lacemaking,  
woodturning, marquetry, etc.**

**Live demonstrations all the day and  
Craft Refreshments**

**Come and see what we do and how it's done**

**Easy Parking in Selsdon Car Park close to traffic lights**

**Admission Adult £1.00 Accompanied children free.**

**A grand opportunity to buy something different for Christmas**

we are aware that this will clash with the event at Alexandra Palace. We don't get everything right all of the time and selecting dates which will suit everybody is often quite difficult. Nevertheless we do hope that our open day will be successful. Naturally we would welcome the support from other branches of the association. If things go according to plan we believe ours will have been THE BETTER WOODWORKING SHOW.



#### BIDDULPH GRANGE DEMONSTRATION

On Sunday September 15th, the Club was invited to Biddulph Grange Country Park Family Day, organized by Staffordshire Moorlands Council. The lathes were positioned under the shade of the pavilion veranda, and many visitors were attracted to stand and watch. Chairman, Tom Buttress, a Committee members, Allan Calder a Allan Hewitt manned the lathes much to the delight of the onlookers. The opportunity to hand out info: about the Club was taken and we hope that one or two more members may be the result. At any rate the club and it's activities are better known and appreciated.

Honorary American Member.

During the summer, Tom Buttress, our Chairman, spent time in Fort Wayne, Indiana, USA. There he was the guest of the local Woodturner's group. They call themselves "Chiselers a Turners", affiliated to the AAW (USA version of AWGB). Tom joined in a hands on turning session. He was made very welcome.

Wearing the American Woodturners 'T' shirt, their gift to him, Tom reported his experiences to the Committee. A decision was made to make Bob Bahr, a retired doctor and President of the Fort Wayne Club, an honorary

member of our Club. We hope that links with a club in another country will prove to be to the advantage of both clubs.

#### 1996 Meetings

This year we have had one whole day Seminar with Ray Key, that was well attended and successful. The monthly meetings have been varied and interesting. Members have enjoyed demonstrations from visiting speakers and from club members, Alan Hewitt and Peter Murphy. Company demonstrations from Trend Router-Lathe, Sorby Tools and Craft supplies have been an interesting and economical addition to the programme! The only innovation was in July when we had a 'Show and Tell' evening. Members brought items of their work, and the brief was for them to say 'This is how I did this' or 'When I did this I had a huge problem' and 'this is how I got round it' or 'This is what I am making' and 'I have come up against a problem that I cannot so far solve' - suggestions please! Every one agreed that it was one of the best evenings as we marvelled at our friend's ingenuity and expertise. The format will be repeated next year.

The exhibition in Stoke-on-Trent's main Library caused so much interest, library staff told us, that we have been invited to do another in December. More of that in the next Revolutions.

## COOMBE ABBEY WOODTURNERS

We are a new club and had our first meeting on October 12th. There is a lot of interest in this area and we already have a membership of about 30. We hope to be affiliated to the AWGB in January '97

Coombe Abbey is a leisure park 5 miles from Coventry centre. The rangers are very concerned to promote the Abbey's facilities and are hoping that club members will be able to build and demonstrate Pole Lathe turning in the wooded areas. Green wood will be available from the estate.

The first meeting we had a talk from Graham Lovett of the West Midlands Branch of the AWGB who explained the advantages of joining the Association. Also at this meeting Derek Pyatt gave advice on Bandsaws and Lathes, pointing out the merits of different models. The second meeting on November 16th at 2pm will be a "Help and Criticism" session by Roger Warren-Finding. This will be useful to everyone, beginners and experienced.

The meetings have initially been scheduled for 6 weekly intervals but can be arranged more frequently if desired.

There is a permanent display of turned items in the craft shop of Coombe Abbey to which members can contribute.

Forthcoming meetings will be short demonstrations, videos and hands-on sessions. There are also full-day training courses available at Coombe Abbey Field Studies Centre run by Roger Warren-Finding

A competition is being organised for a 'logo' for this club and will be judged at the Dec/Jan meeting.

#### COOMBE

#### ABBEY WOODTURNERS

Secretary: Sheila Bromfield, 28 Madeira Croft, Coventry, CV5 8NY. Telephone: 01203 711925. Meetings every 6th Saturday at 2-00pm at Coombe Abbey Field Studies Centre, Coventry.

*Robert Sorby*

Robert Sorby wish it to be known that they are once again available for demonstrations and talks

ROBERT SORBY, ATHOL ROAD  
SHEFFIELD S8 0PA  
TELEPHONE 01142 554231



The Avon & Bristol Branch was invited to represent the AWGB at the Westonbirt Arboretum's first "Festival of Wood" held on September 7th and 8th. Much planning and discussion took place prior to the event and prayers were offered for fine weather.

We erected our marquee on the Friday afternoon and by the evening our stand had gradually taken shape. Well after dark saw all our exhibits, illuminated by a hired generator's electricity, finally in their places.

Three members, the ones who drew the short straws to stay the night, guarded tools and exhibits in shifts throughout darkness hours. Hyperactive owls and the cold ensured that little sleep was had.

Saturday morning saw the arrival of the dayshift and some brilliant sunshine and warm weather. Final preparations were made and the public's arrival at 10am was nervously awaited. As Saturday and Sunday progressed the Festival saw about 7,000+ visitors arrive and our stand treated them to a fine display of woodturned items. They also had the opportunity to take part in quizzes, see items being made in turning demonstrations and to find out about the benefits of AWGB membership. We have seven new members as a result.

The event, the proceeds of which went to "Tree Aid", an organisation dedicated to reforestation in Africa, was very well organised by Westonbirt staff. All the exhibitors were united in a common aim - to project their love of, and enthusiasm for, wood. It was a privilege to be part of such a prestigious event and we look forward to being involved next year.

## Who'd be a Woodturners Partner

When a person decides they would like to try woodturning, little do they, their partner and family know that it will become an all consuming passion. The lathe is acquired, tools are purchased and lots and lots of time is used producing wood chippings. The work when produced is admired and coveted. In the search for perfection, courses are undertaken, clubs are joined, wood is purchased in profusion, circular objects creep into the house, many in a half-turned state 'just to dry out a bit' and microwaves are utilised. Strangely wood chippings appear on the newly vacuumed carpet and in bedrooms and bathrooms, despite the ritual jumping up and down and stamping of feet before our dearly beloveds step into the house. Do we partners complain? not at all, we encourage, and on club nights/afternoons/days who can be found preparing refreshments and ensuring from behind the scenes the event runs smoothly? We are able to meet other like minded people over the washing up. And a great deal of contemplation can take place with your hands in hot soapy water or skilfully manipulating a tea towel.

Where did all this begin? whom do we have to thank for bringing such pleasure into the lives of our dearly beloved woodturners? Well it began almost ten years ago with the first Woodturning Seminar at Loughborough. I suspect I am not alone in wondering how the delegates arrived home in one piece. Certainly in our house it appeared that although he was actually in the car, with both hands firmly on the steering wheel, he must have been on the ground, but his thoughts and mind were left 10ft in the air. It was wonderful to share the excitement and to hear him enthusiastically recounting the weekend's demonstrations and the number of like minded people he had met. Of course, with so many new things to

try out, what a pity it was Monday tomorrow and back to work. And so the AWGB was formed. As we all know most hobbies can be isolating but turners were given contacts in their areas, and those who could, formed groups. And so it grew.

With all you men (and some ladies) out there enjoying yourselves, we are delighted to support you but may I suggest you give a pat on the back to your partners, who smooth the way to enable you to turn, and in particular, a lovely young lady who was there before most of us knew what a woodturning lathe was, the wife of the Chairman of the AWGB always cheerful, always beaver away and almost unseen. I feel sure without her support there would not have been an Association.

I think our motto should be 'If you can't beat em, join em' and you can't beat a lathe!

signed by  
*Just another woodturner's partner.*

*Snippet from a members  
local paper*

*Yew were  
meant for me*

From the minutes of the planning committee of Purbeck District Council this week dealing with an application to site a mobile home requested for an agricultural tenancy at Squibbs Farm, Pullington, an officer's report says "Livestock on the holding consisted of six yews and one ram....."

I hope the ram is not barking up the wrong tree



# The Middlesex Barbecue

By Tiro

August Bank Holiday 1996 could have started better! Firstly the weather forecast at five to seven could be summarised as 'rain with wet intervals, cold and windy'. It took me longer than I had expected to get my bits and pieces ready before I set off to help with setting up the Middlesex Association's activities day and barbecue. I was in a hurry, and there was the little matter of the radar trap just before I turned off the motorway. Finally, there was the rocket that I got from Dave Reeks for being late!

But things slowly began to improve. Dave has been a key member of the Middlesex Woodturners Association since it started. Together with his wonderfully long-suffering wife Helen he was hosting, for the third successive year, an afternoon of wood related activities which culminated in a barbecue. He and Mac Kemp, our chairman, had spent a number of hours earlier in the week clearing the area we needed for the several events, and they had already put the marquee up. Craft Supplies, who had kindly agreed to bring their Road Show along, were already in place and Jimmy Clues and Tom Davidson had nearly completed setting up to give very professional demonstrations of turning and finishing techniques. They had a small trade stand too, and they had brought Dave Perry along from Tormek to demonstrate that excellent sharpening system. A number of vintage aircraft flew low overhead on their way into an event at a nearby airfield, beginning an impromptu display that was to last all afternoon. And the threatened rain hadn't arrived. We had been very lucky with the weather at an out-door wood working show two weeks earlier and we couldn't really expect that to happen again.

Next to arrive was Ted Dowling, a pole lathe turner who had come to show us how it was done. As we helped him to carry his kit into position it was good to see how the design was very effective yet uncomplicated, and how few

concessions there were to modern technology. The only change of significance was a substantial tarpaulin which covered his demonstration area. Looking at the sky, we felt that this was a good idea; we didn't have very much cover.

Greg Hopkins, of Hopkins Fine Timber, once again brought in his Trekkasaw, this time to plank some interesting-looking London Plane that Dave and Mac had bought. The Trekkasaw was very popular at last year's event. As soon as I saw it I knew exactly what I wanted for Christmas. I didn't get it; I mustn't have been a good enough little boy.

Tim Lawson, one of our members who is well known for his large turned items, had brought along his chainsaws to demonstrate how useful they can be in preparing timber for the turner. One of the chainsaws has a forty-eight inch bar, which made my wrists ache just looking at it.

Mike Cripps, our President, and Mike Dennis, a member of the AWGB and Middlesex committees, had agreed to cook the barbecue for us following their star performance at last year's event. They were both in place early, setting up an impressive field kitchen to prepare the meal for the seventy or so who would attend.

Just as the Trekkasaw took its first slice a few drops of rain fell, closely followed by the faces of the organisers. It was a timely reminder of our vulnerability! Members began to arrive, a few sporting rainwear but most optimistically without. We all gathered round the Trekkasaw to see what the first slice had revealed. The heartwood was a most unusual colour, with large areas showing a pink hue and beautiful figuring. The excitement was electric as the saw

was adjusted to make the successive cuts. Sure enough, the quality was the same through the whole butt. I have never seen sawdust nearly the colour of pink ivory coming from an English hardwood.

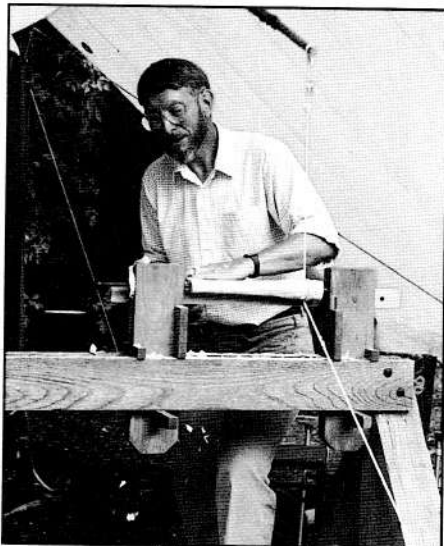
The rain stopped although the sky continued to look threatening for some time, and I tore myself away from the Trekkasaw to see what was happening in the back garden where the pole lathe was now fully operational. Ted's contribution was a real highlight of the day. He was very patient in answering the same basic questions many times during the afternoon; he knew the subject well and he encouraged members to have a go at all the various stages of converting pieces of fresh-felled tree into turned items.

I have usually been disappointed with my efforts to cleave timber, but Ted explained what happened in the process, and having had some success under his guidance I look forward to having a go again at my own timber later in the year. Next he showed us the side axe and how to use it, swinging the axe in the same plane and moving the timber to achieve the series of cuts up the piece to take the sharp corners off. Then there was that ancient and very well designed device, the shaving horse. This was the first time I had been able to try one out, having seen it at many shows. What a delight it was to use! The shavings of clean white birch fell away, and by frequently moving the piece, it was



Tim Lawson with his 48" blade chainsaw





*Ted Dowling*

quite readily converted to something closely approximating the round.

Then the moment of truth! Ted called for a volunteer to follow him in turning a piece in the lathe. Who, having heard the jovial banter that real aces like Stuart Mortimer and Gary Rance get at the Middlesex, would want to stand up and display their limitations? I found Ted's invitation irresistible, but I did wait until most of the crowd had drifted away, no doubt fearing that they might be press-ganged. My ruse failed; as soon as I put my foot on the treadle the pack returned. The demands on balance and co-ordination are quite alien to an electric turner, and it takes some time to get even a simple cutting action going. But again Ted was very patient, and eventually I managed to take a few clean shavings, leaving a very smooth, clean surface. The satisfaction in achieving that was amazing, and pressing on to achieve a simple

shape, a dibber or whatever, was something that all of us who tried it will remember. I denied the pack though! Unknown to me, my ham-footed treadling was bringing the pole a few thou past my left ear, almost to my shoulder. The crowd gleefully waited for me to brain myself if I were to look even slightly round the left end of the work piece. I was saved by the fact that I was so tense, believing that if I moved even a muscle other than for the simple movements I was rehearsing I would at least have had a dig-in or even have fallen over altogether!

As I left the pole lathe Leon, aged eight and attending with his granddad, asked if he could have a go at shaping a piece of wood on the shaving horse. I didn't expect that he would stay with it for very long. The drawknife was far too big for him, and the billet of timber was quite big too. But he patiently shaved away for a long time until the whole piece was in good shape, showing not only that he had a very good concentration span, but that there was much satisfaction to be gained from the task.

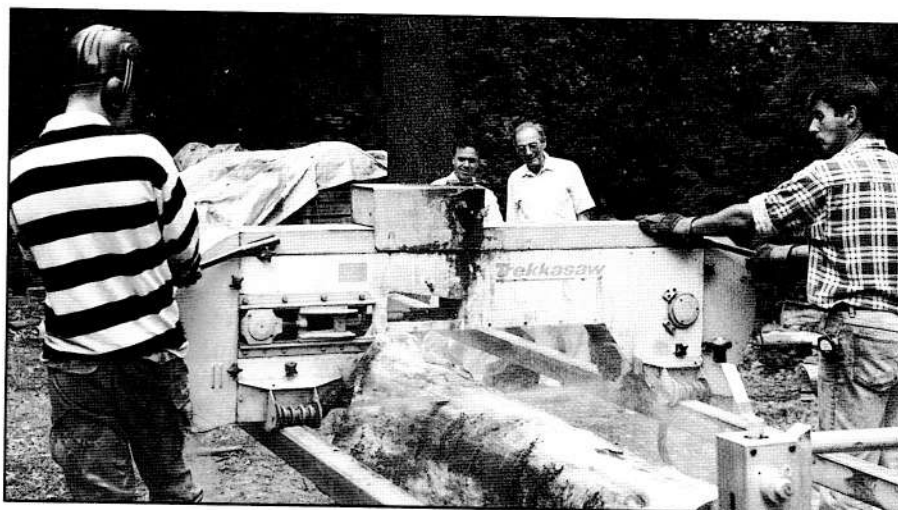
Next over to Craft Supplies to see their demonstration and the Tormek sharpener. Here we were on much more familiar ground, but again the answers to questions were patient and informative. The thin platter which Jimmy was turning was moving as its moisture content changed, and I was interested to see how dealt with it. The problem is very familiar to me in my own workshop, but it was made worse for him by

turning out of doors where the humidity was changing quickly as the rain stopped and the sun began to shine intermittently. Dave's Tormek demonstration too was familiar but impressive nonetheless. It is always surprising how quickly severe damage to a cutting edge is put right by the wet stone without appreciably heating the metal. Our members enjoy many aspects of woodworking, and this sharpener would support them with a broad range of tools, not only those for turning.

Now back to Tim, who had cut a substantial fork off one of the plane trees, perhaps twenty inches across and three feet long. He marked out this and another length to show how to make the most of the figure in the wood. Then with his enormous saw he cut along the grain, creating long ribbons instead of the more usual chippings and dust. These became something of a problem as they accumulated at the saw head obscuring the marking on the workpiece. As the pieces came apart they showed the particularly attractive characteristics of the wood. In particular, the two pieces from the fork, quarter sawn and book matched, stimulated a lively debate on how they should best be exploited.

Then the call came from the two Mikes that the barbecue was ready, and we all realised how the afternoon outdoors had sharpened our appetites. I'm sure I wasn't alone in eating far more than was good for me - it was so tasty, and at last the sun shone warmly. A draw and votes of thanks to our generous hosts and all the hard workers swiftly concluded the event.

As I drove home I reflected on how thoroughly enjoyable it had turned out. There had been a great deal of interest. I had practised unfamiliar skills, eaten too much and enjoyed the companionship of a very agreeable group of friends. And for the second time in a fortnight we had been unbelievably fortunate with the weather. I didn't really deserve to be so lucky: a point that was made to me a few days later by that very polite traffic officer!



*The Trekkarsaw in action*

## Turn East 96

*A report by Tony Witham*

The Eastern Region Seminar, organised this year by The Norfolk Woodturners Branch, started for me on the Friday evening. A good woodturning friend of myself and my wife Sid Bear and his wife Beryl had offered us accommodation for the weekend, also staying with them that weekend was Rose-Marie Yeh and so a lot of woodturning was discussed on that Friday evening.

We set off early Saturday morning for Fakenham School, the venue for the Seminar, and all the committee were very busy making the final preparation for the day. The trade stands were setting up in the main hall and The Norfolk Branch had set out their display of members work on the stage area of the hall, as expected the pieces of work were of a very high quality. There was also an instant gallery for the delegates and demonstrators, these were Ray Key, Chris Stott, Stuart Mortimer, Gary Rance and Rose-Marie Yeh. After a short introduction by Bernard Rose everybody went to the various demonstrations.

I am not going to comment on the demonstrators as Ernie Cheal from the newly formed Colchester Branch has sent me a very good overview of the demonstrations which is published in this edition.

The day ran like clockwork with refreshments provided all day, including a good lunch, served to us by the wives of committee members to whom I send our thanks for the excellent refreshment stops.

The seminar was closed with a short speech by Bernard Rose and all the delegates left enthused by the various demonstrations. I would like to thank all of The Norfolk Branch who organised such a splendid day and also to thank John Tuck and his wife for inviting all the committee and demonstrators to their home in the evening for food and drink. We could not have a better way to finish a terrific day - thanks Norfolk Woodturners.

## Turn East 96

### A report on the demonstrators

*by Ernie Cheal*

There were five demonstrators to be observed and listened to Chris Stott, Gary Rance, Rose-Marie Yeh, Ray Keys and Stuart Mortimer but unfortunately only four sessions during the day in which to see them. This made it difficult as most of the delegates would have liked to see all of them in action but choices had to be made.

**Stuart Mortimer** with his Spiral work was a very popular choice as many knew of him but had not actually seen him performing his skills and throughout the day his demonstrations on how to make a Single Twist, Double Open Twist, Twisted Hollow Forms and Twisted and Laminated Goblets were keenly observed and his audience was well entertained by his stories and educated by his work.

**Gary Rance** is a talented and amusing demonstrator who served his apprenticeship in Chesham, Buckinghamshire. This is a traditional part of the country for woodworking and has a history in furniture manufacture. The production of chair components, stair spindles and other items for the home honed his turning skills and he ably showed his ability by making a Pepper Mill, Pomander, Ring Box, Spinning Tops and Yo-yos.

**Chris Stott** is well known to most turners as a competent craftsman who has an easy manner and a genuine willingness to try to help keen but less experienced turners to get the best from their efforts. Some of the range of his skills are in his videos and at this seminar he talked about his recent trip to America which has given him some new ideas influenced by Native American ( Indian ) traditional designs. Chris demonstrated the making of Miniature Hollow Forms, Decorative

Boxes, Natural Edge Bowls and Hollow Forms all of which were well received by discerning audiences.

**Ray Keys** Many of us have seen Ray perform some of his work at other Seminars but a glance at his audience will show that his methods, approach and clear presentations are absorbed by appreciatively. Ray's preparation before turning is a lesson to all as it is clear that he has every step mapped out in his mind before he starts. His demonstrations covered Containers & Boxes, Bowls, Platters and Dishes and I would imagine that many of the homes of the delegates who watched him now have new pieces inspired by his enthusiastic approach to turning.

**Rose-Marie Yeh** Although Chris Stott and Jan Sanders both have videos which are on colouring it was well conceived by the committee of the Seminar to include demonstrations on this topic, texturing and design. At some stage many turners will consider using colour to enhance some of their work. Most would agree that nature does an excellent job on most woods and some might say that it cannot be improved upon however on planer woods such as Ash, Sycamore and Elm some dye colouring can bring out the grain patterns provided that it is applied with some thought. It is not everyone's "cup of tea" but without experimentation how are we to know what is available to enhance our work? Texturing is another area of interest and many different surfaces can be produced by the use of wire brushes, sand blasting and the use of a variety of devices to mark the surface of the wood in some way. In addition to this Rose-Marie did a slide show on design and demonstrated bowl turning



# Good Woodworking Show 96



**Alexandra Palace, London**

10.00am - 5.00pm (Thurs, Fri, Sat)

10.00 - 4.30pm (Sun)

## THE ANSWER TO ALL YOUR WOODWORKING NEEDS!

Members of the AWGB qualify for a special discount of £2.00 off each ticket simply by booking in advance using the special booking form (that's an extra 50p off the normal advance ticket price).

### BUY THE BEST

To celebrate the 50th issue of *Good Woodworking* magazine the editorial team will be demonstrating the 50 products that have been rated 'best on test' -PLUS- You'll find all the latest supplies from the UK's top retailers and manufacturers

### THE TOP NAMES IN WOODWORKING

Our team of experts will be demonstrating techniques including:

*John Perkins* - Hand and power tool techniques

*Ian Wilkie* - Miniature turning and dolls houses

*Tobias Kaye* - Turning with Graduate

*Mark Corke* - Tool sharpening

### COME AND MEET THE AWGB

The Association of Woodturners will be demonstrating a wide variety of turning skills and answering questions.

### HAVE A GO YOURSELVES

Put the very latest top-brand products through their paces at the FREE workshops -PLUS- Technique tips and advice from the pros

### TURNING COMPETITIONS

There are three turning competitions to enter this year. You can turn a bowl, a pair of matching candlesticks or a hollow form. First prize in the bowl competition is a Graduate lathe worth £2500 and there are lots of other great prizes up for grabs in the other sections. You can enter as many times as you like and all the entries will be displayed at the show. The entries will be judged on technical ability, suitability of material, finishing and, of course, design. The judging panel, which will include Tobias Kaye, will decide the best entry before the event and the lucky winner will be announced at the show.

Full details of how to enter will be published in the November issue of *Good Woodworking* magazine or you can write for more information to:  
Future Events, 30 Monmouth Street, Bath, BA1 2BW

**TO BOOK YOUR TICKETS SIMPLY CALL 01369 707700 OR FILL OUT THE FORM BELOW**

#### 1 PLEASE STATE WHICH DAY YOU WOULD PREFER TO ATTEND:

Thurs 21st Nov ☐ Fri 22nd Nov ☐ Sat 23rd Nov ☐ Sun 24th Nov ☐

#### 2 PLEASE STATE HOW MANY TICKETS YOU REQUIRE:

	On the door advance rate	AWGB	Number required	£
Adult	<del>£6.50</del>	£4.50	<input type="text"/>	<input type="text"/>
Senior Citizen	<del>£5.50</del>	£3.50	<input type="text"/>	<input type="text"/>
Child (8-14)	<del>£4.50</del>	£2.50	<input type="text"/>	<input type="text"/>
TOTAL £			<input type="text"/>	<input type="text"/>

#### 3 HOW WOULD YOU LIKE TO PAY:

(Tickets will be dispatched 8 weeks before the show)

☐ Cheque (Please make payable to Good Woodworking 96)

☐ Visa ☐ Access

Expiry date:

Credit Card no:

#### 4 PLEASE COMPLETE YOUR DETAILS IN BLOCK CAPITALS:

MR/MRS/MISS/MS

ADDRESS

POST CODE

TEL NO  AWGB MEMBERSHIP No

SIGNATURE

Please return this form with your payment to:

Good Woodworking 96, PO Box 9, Dunoon, Argyll, PA23 8QQ



# CREATIVE WOODTURNING SEMINAR

Horncastle College, Lincolnshire

11-13 April 1997

Ray Key and Paul Clare will be demonstrating their skills at the second Creative Woodturning Seminar which is to be held at Horncastle College, Lincolnshire, from Friday to Sunday, 11-13 April, 1997.

These seminars are designed to provide woodturners with an opportunity to enjoy a residential weekend with other enthusiasts at a relatively modest cost. The aim of the seminars is to stimulate ideas and encourage turners to express themselves more freely in their work. Our two very talented turners will share with the participants their individual approaches to creative woodturning and the techniques they employ to achieve their objectives. Between dinner on Friday and lunch on Sunday each participant will be able to enjoy over 8 hours of workshops (split equally between the demonstrators) and two slide presentations. In the opening session Ray and Paul will introduce themselves with slides of their work. On Saturday evening the Course Director (Brian Clifford) will use slides to illustrate a talk on the 'Pursuit of Creativity'.

Participants will be urged to bring four examples of their own work. These will be displayed to form an 'instant gallery'. The programme will afford ample opportunity for discussion of these pieces and the ideas being stimulated during the workshops. A short period after lunch on Sunday has been allocated for summing up the weekend and feedback of participants' views.

Horncastle College is run under the auspices of Lincolnshire County Council Education Department. It is a residential adult education centre offering conference and business

facilities as well as a range of midweek and weekend courses. The college is situated on a very pleasant site, has very good facilities, and provides excellent accommodation and good food. The town of Horncastle lies on the edge of the beautiful Lincolnshire Wolds. As it is only some 30 miles from the A1 it is more accessible than many might think whether approached from the north or the south.

## **The demonstrators**

### **Ray Key**

Ray Key is so well known and has excelled in so many areas, not only in the UK but in the international arena too, that it is hardly necessary to spell out his achievements. He has written articles and books, made videos, demonstrated far and wide, and been the driving force behind the inauguration and development of both the AWGB and the International Seminars. In the successful pursuit of these activities he has been the principal force behind the amazing development of woodturning in the UK and its continuing growth in popularity. The consistent quality of his turning over a very long period, both in terms of execution and design, is unsurpassed. At this seminar Ray will have the time to pass on the fruits of his experience and to develop his thoughts on design and creativity in considerable depth.

### **Paul Clare**

Paul Clare is considered by many judges to be the most creative woodturner working in the UK today. He is certainly one of a select circle of turners who are producing work of a highly imaginative quality and his

pieces are being seen with increasing frequency in the top galleries. His best known pieces are his split-burr oak vessels which are stained black by pickling in a ferrous oxide solution. He does, however, produce a wide variety of other forms for which he finds inspiration in unlikely sources, such as fungi, machinery and even a punk rockers hair style. Amongst other places he has demonstrated at the AWGB International Seminar. Paul gets many invitations to demonstrate but, as he dislikes travelling, he turns many of them down. We are very fortunate to have been able to induce him to demonstrate his skills at this seminar.

## **The Course Director**

### **Brian Clifford**

Brian is a keen woodturner who enjoys sharing his enthusiasm and skills with others. He has been member of the AWGB since its inception; he has served on its national committee and as chairman of the its Training and Education Steering Group. He has been editor of a magazine for woodturners and has published a number of articles on woodturning topics. He also teaches, lectures and demonstrates from time to time.

Brian has had a varied career. After 11 years as an engineering draughtsman he returned to full-time education. Subsequently he spent a number of years as a lecturer in adult education and ten years as an economic adviser at the National Economic Development Office. In between times he has carried out research at Warwick University and the Engineering Industry Training Board.

# CREATIVE WOODTURNING SEMINAR

11 -13 April 1997

HORNCASTLE COLLEGE, LINCOLNSHIRE  
DEMONSTRATIONS AND LECTURES  
with

**Ray Key**  
**Paul Clare**

Supported with lathes from the Graduate Lathe Company Ltd

**Course Director: Brian Clifford**

Resident (single room) £87.00, Non-Resident £64.00

For more information: ring 01507 522449

or Write to Horncastle College, Mareham Road, Horncastle, Lincs, LN9 6BW

## Advance ticket application for the INTERNATIONAL WOODWORKING EXHIBITION

Hall One, Wembley Exhibition Centre, London

Thursday 27th February till Sunday March 2nd 9.30am - 5.30pm daily

**Call the ticket hotline on 01442 244321 and quote code: AWGB or complete the coupon today**

Tickets	'On the door'	Advance	AWGB Members	No Req	
Adult	£8.00	£6.50	£6.00	.....	£.....
Senior Citizen	£5.50	£4.00	£3.50	.....	£.....
				<b>Total</b>	<b>£.....</b>

Please complete and return this form with a cheque/P.O. made payable to  
Nexus Special Interests Ltd or fill in your Access/Visa card details below:

Card Number:

Expiry Date:

Name: Mr/Mrs/Miss Initial.....Lastname.....AWGB No.....

Address:.....

.....Postcode.....Tel:.....

**£2.00 Saving  
for AWGB  
members  
only**

All completed forms should be returned to Woodworker Show Advance Tickets,  
Nexus House, Boundary Way, Hemel Hempstead, Herts. HP2 7ST

To guarantee receipt of your tickets all orders must be received by January 31st 1997