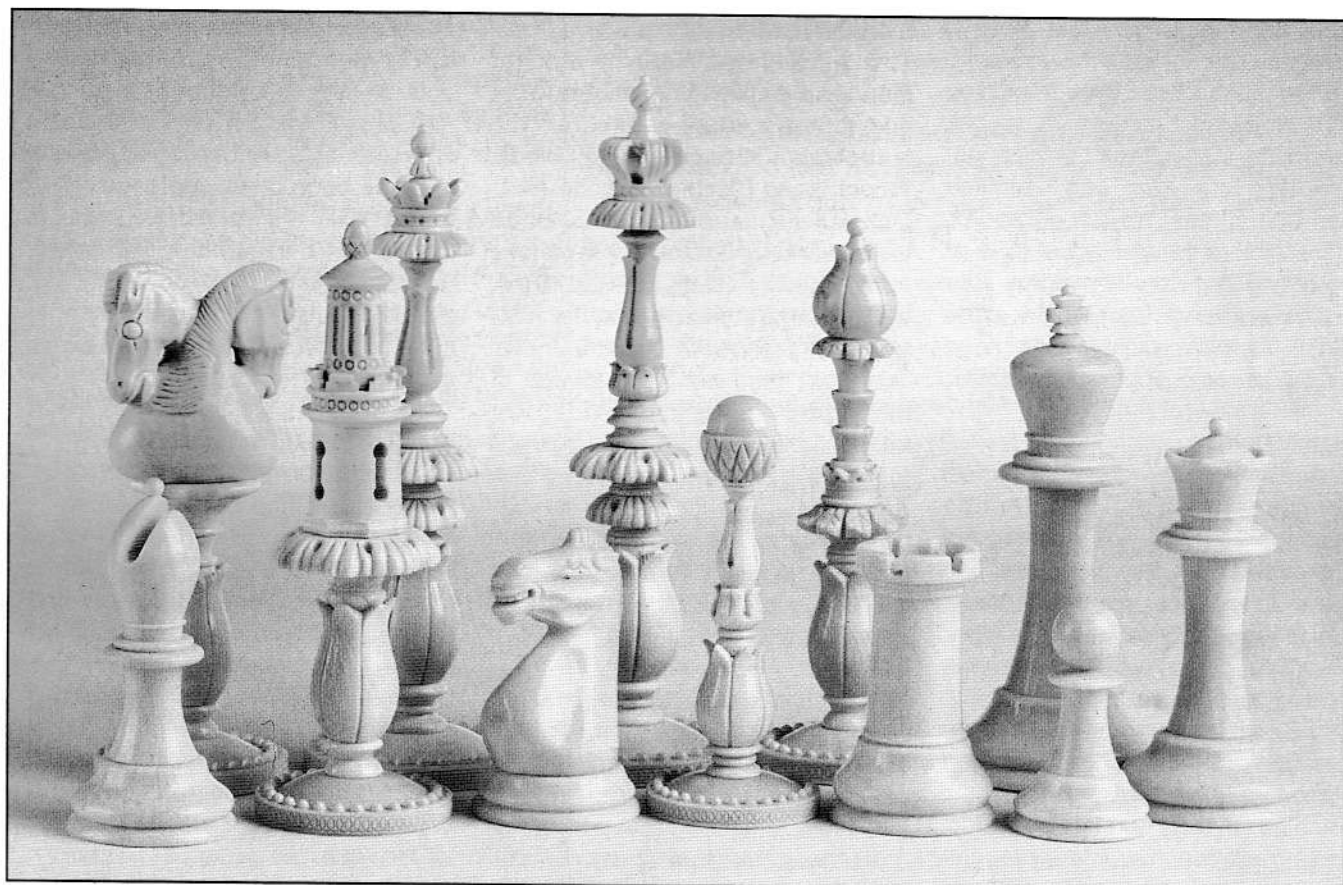


Revolutions

Issue No 38

August 1996

Newsletter of The Association of Woodturners of Great Britain



*Chess set made by Bill Jones
and displayed at the
International Seminar
at Warwick University - August 1995*



The Chairmans Page(s)

Hear we go again it's that time when I try to keep you up to date on the continued development of the AWGB. I think it would be fair to say your Committee has become more pro-active over the last year or so, we are growing in membership once more, and I hope you feel there is more on offer to each of you as a member. Like most things in life you have to put something in to get something out, seldom do you get something for nothing. I do feel these days that at least we are giving you all the chance to take advantage of something that would not come your way if you were not a member of the AWGB. As this missive unfurls I hope this will become apparent.

EXHIBITION:

I will start with the negative aspect of my report, at our committee meeting in June it was decided not to proceed with the plans we had drawn up with our potential sponsor. The reasons are these, put simply, difficulty in communication, this was starting to effect our plans for the 1997 Seminar, also a feeling that the sponsors original objectives had changed a little. It was felt that there would be difficulty in retaining a good working relationship. There remains however a strong possibility that we shall be able to work together on something else which will be of mutual benefit.

That's the down side, on the up side a lot of the planning your committee put into this project can be used as we put plan 'B' into operation, at our next meeting on September 16th this will be a main agenda issue and I am sure we will come up with a positive plan of action.

NVQ:

We are assured by the NVQ Consultants that there was a very

positive response from many of our members on their questionnaire. Things are moving forward on this issue, the steering group should have met twice in JUNE and a document will be submitted to City & Guilds for validation, submission to NVQ/SVQ will follow, a six month time scale is envisaged.

EXHIBITIONS:

The AWGB has been invited to mount as display of members work and to run a turners clinic at The National Woodworking and Woodturning Exhibition at the NEC Oct 4th-6th and also the Good Woodworking Show at Alexandra Palace Nov 21st-24th. Len Grantham will in charge of the clinic at the NEC and Tony Witham at Ally Pally. Graham Lovett will be in charge of the display of work at the NEC, who takes charge at Ally Pally is has still to be resolved as the invitation is only days old but acceptance of our participation had to be made very quickly. What I can say is our Secretary Peter Einig will be in attendance at both shows.

What you can expect to see and find on the AWGB Stand other than the Clinic will be a very creditable display of work by our members, all our Branches have been asked to submit 5 items of members work, and invitations have gone out to quite a number of members who normally produce fine work. This work will be displayed for the first time on a completely new display system to us, specially purchased for its ease of erection and storage. The AWGB will again provide the Publics Choice Trophy at the NEC as in previous years.

Perhaps the best news of all is that you can pre-book your show tickets for both The National Woodworking and Furniture Exhibition at Sandown Park Sept 26th-29th (we are not there this year) and the NEC

Show, with a discount of £2 off the ticket price this is 50 pence more than any one else can obtain, this has been negotiated for members of the AWGB only.

Our Avon Branch will be flying the AWGB flag at what should be a wonderful event at Westonbirt Arboretum on Sept 7th-8th this event is entitled The Festival of Wood 10,000 people are expected over the two days.

BRANCHES:

A big welcome goes to two new groups, Mid Marches who were mentioned in the last issue of 'Revolutions' are now fully on board, as are our latest group Grampian. This makes 23 Branches of the AWGB, and groups are in formation in several areas of the country where we have been under represented. The AWGB will soon be issuing a Certificates to all our Affiliated Branches, these we hope will be displayed with pride at Branch meetings and shows, or at any event a Branch is involved with.

YOUTH POLICY:

We have taken a number of initiatives in this area Chris Lindup has been hard at work on this one and has taken on the roll of Youth Development Officer, a full out line of what your committee has adopted appears elsewhere in Revolutions as does Ideas for Membership Increase.

The two main points with regard to Youth is that we are purchasing a Lathe specially dedicated to them, for loan over a twelve month period.

If you know of a young person who would benefit from this opportunity then please let us know quickly, we hope to be in receipt of nominations prior to our September Committee meeting. We will try and decide the recipient then, with the presentation being made at the NEC Show.

Secondly we will pay the Subscriptions to the AWGB of two nominees per Branch for youngsters under the age of 18 years, we require each Branch to match this offer at local level.

Continued on Page 4

The Association of Woodturners of Great Britain

Executive Committee

Chairman

Ray Key, The Firs, 53 Weston Road,
Bretforton, Nr Evesham. WR11 5HW
Tel: 01386 830142

Vice Chairman

Chris Lindup, 38 Barry Road,
Oldland Common, Bristol, Avon. BS15 6QY
Tel: 01179 325477

Treasurer

Len Grantham, Spindles, Cooper Close,
Poplar Farm, Nettleham, Lincolnshire LN2 2XX
Tel: 01522 595660

Secretary

Peter Einig, Keepers Cottage, Lee, Ellesmere,
Shropshire SY12 9AE Tel: 01691 622715

Trade & Business Liaison

Frank Clarke, 81 Knightwood Crescent, New
Malden, Surrey. KT3 5JP Tel: 0181 942 5463

Branch Co-Ordinator

Ken Allen, 90 Peakes Road, Etching Hill,
Rugeley, Staffs. WS15 2LX Tel: 01889 570373

Newsletter Editor

Mike Dennis, 72 Hawes Close, Northwood,
Middlesex, HA6 1EW Tel: 01923 829844

*ERIC DITCHFIELD
8 BLOOMSBURY COURT
ST LUKE'S SQ GUILDFORD
SURREY GU1 3NQ 01483-454226*

Branch Committee Members

Scotswood

George Hunter, 3 Dundas Avenue,
North Berwick, East Lothian. EH38 4PS
Tel: 01620 892293

Suffolk, Essex & Cambridge Borders

Tony Witham, 39 Horsey Road, Kirkby-le-
Soken, Frinton-on-Sea, Essex. CO13 0DZ
Tel: 01255 671697

West Midlands

Graham Lovett, 66 Beachcroft Road, Wall
Heath, Kingswinford, West Midlands DY6 0HX
Tel: 01384 277398

Worcestershire

Richard Barnes, 67 Teme Crescent, Droitwich,
Worcestershire. WR9 8UB
Tel: 01527 570128

Contents

Chairmans Page	2
The Association of Woodturners of Great Britain	3
Editorial	5
Raffle information	5
A Woodturners Tale	6
Profile on Tony Witham	7
News from the Committee	8
Sorby Competition	9
Yorkshire Show results	10
Yandles Spectacular	11
News from the Branches	13
Wordsearch puzzle	15
NEC Show	16
Sandown Show	17
NEC Competition	20
Alexandra Palace Show	23

Articles, letters, tips, adverts etc featured in this Newsletter do not necessarily carry the endorsement of the Association of Woodturners of Great Britain.

DATA PROTECTION ACT

If you object to your name, address and telephone number being held on a computer belonging to the AWGB, then please write to the Secretary. (Address Above)

The following woodturning videos are available for hire to members.

Turning Wood	Richard Raffan
Turning Projects	Richard Raffan
Bowl Turning	Del Stubbs
Hollow Turning	John Jordan
Bowl Turning	John Jordan
Cutting & Sharpening	Chris Stott
Turning Bowls	Chris Stott
Turning Boxes	Chris Stott
The Basic Box	Ray Key
The Capsule Box	Ray Key
The Finial Box	Ray Key

Slide Packs of the 1989, 1991, 1993 Loughborough International Seminars. - Slide Pack of the Hay-on-Wye exhibition
To hire any one video or one slide pack, Please send 2 cheques one for £5 for one week's hire and one for £30 as a deposit which will be returned on the safe return of the video or slide pack.
Please make both cheques payable to AWGB.
Application for hire should be made to: Ken Allen (Address Opposite)

AWGB LAPEL BADGES

(Brass & Enamel)

Send Cheque etc, to:

Frank Clarke (Address Opposite)

COST £2.50 inclusive of post and packing

MAKE ALL PAYMENTS TO AWGB

**Copy deadline for the next edition of
Revolutions
1st November 1996**

Has anybody let him out yet



Reg Sherwin at last years NEC show. I wonder if he has finished making that lace bobbin yet

Chairman's Notes from page 2

The funding of these initiatives will come from the money raised at the Auctions at our Bi-annual Seminar, this seems to us a very positive way of using the money and an investment in the future of woodturning, we anticipate building on these initial initiatives.

SEMINAR:

Your Seminar sub-committee has the planning of this in hand, as we strive to make it our best yet, as we celebrate our 10th Anniversary of the AWGB's formation, the venue is booked, just remember the dates, August 8th-10th 1997.

RAFFLE:

This is the first of our celebration events, with five major prizes, this is an opportunity you can't pass by surely. The chance to win a new Graduate GL 30 for just £1, Peter is giving the full low down on this event elsewhere in 'Revolutions' so I will say little else other than to say a big thank you to those traders who have

been so generous to the AWGB.

I am getting close to the end of this missive I am sure you are pleased to hear, I will just touch on another one or two other things we have or are taking a look at, Lottery Funding and Charitable Status, the AWGB will not stand still it will continue to grow and develop with your goodwill and continued membership.

On a personal note it was my pleasure to be one of the main presenters at the AAW Symposium in the USA in June, this was the biggest event of its type ever held 940 delegates, with 1200 people attending the Banquet.

It was good to see AWGB members John Ambrose, Bill Kinsman, Chris Stott, Melvyn Firmager in attendance and enjoying themselves.

My last words, things are getting serious, how long I wonder before questions on woodturning are asked

in the House of Commons. I have just been informed that a disgruntled fellow woodturner wrote to his MP complaining at not being selected for certain craft fair. Making reference that certain 'establishment woodturners' (whatever that means) are always selected, yours truly was one of those mentioned. Well for that persons information I am not selected this year, but I would like to think that in the past my selection was based on the quality of my work. This just a passing comment to give a little food for thought for someone.

I shall look forward to seeing many of you at the Norfolk, Fakenham, Seminar, also at Buxton and the NEC in the next few months.

Enjoy your turning and enjoy your membership of the AWGB it is an organisation that promotes its growth by sharing of a common interest.

Ray Key

Editorial

As some of you may be aware I have been ill for some time with nervous exhaustion and as a result I may not have responded to all of your letters, phone calls etc. If this has been the case please accept my apologies. I would like to thank all of you who have wished me well and supported me during this period. I am glad to say that I feel a lot better now and am able to pick up on the reins as editor of Revolution once again.

This issue of Revolutions is about a week or so overdue. The main reason for this is the delay in getting information about the various shows that are forthcoming. The delay has meant that publication is too late to meet the closing date for entries to the competitions at the Sandown exhibition. (August 23rd).

As you will see later in this edition there are vouchers to enable members to get discounts off entry prices to the various shows. If you do not use the hotline numbers to order your tickets then please feel free to photocopy the vouchers to save destroying your copy of Revolutions.

The front cover of this issue features the work of Bill Jones. I know that Bill has visited several branches in the last few months to demonstrate his skills.

10th Anniversary Raffle

You may have noticed that you have some raffle tickets in with your newsletter. If not then please contact Peter Einig for your raffle tickets.

Members, or any other person, under 16 years cannot buy tickets by law but younger members who have them with the newsletter can sell them on behalf of the Association.

Tickets can not be sold outside of the U.K.- so our overseas members will have to ask a person resident in the U.K. to buy their tickets for them and utilise that persons U.K. address. For those overseas members who wish to buy tickets and you do not have any English contacts, then you can send Peter Einig your tickets and money (in pounds sterling) and I will register your purchase at my address.

All members must note that the first prize is delivered to the mainland UK only.

There are plenty of tickets available and they will be going on sale at the NEC and if we have any left by 1997, WEMBLEY. If you can sell some tickets to sell to your fellow turners who are not in the AWGB, then please contact me as soon as possible.

It is our intention to draw the ticket on Saturday 1st. March 1997 and try and get winners to the Wembley show on the Sunday afternoon for the presentation, so a phone number will be most useful.

PLEASE do not leave your purchase until the last minute. Send your cheques and completed stubs to Len Grantham now whilst it is fresh in your mind. Then you can buy some more tickets next year - provided that we have some left. Please send any unsold books of tickets back to Len

A Woodturners Tale

by 'Chuck Turner'

My workshop is shiplap boarding on 2x2 battening with Stirling board sheets covered by bitumised felting for the roofing. It was constructed by my neighbour and I, in 1987 and footings were dug and concreted and the building sections mounted on house bricks, with a damp course between the bricks, and the bottom battens of each section. The bricks were then pushed outwards to fit up to the ship lap overhang. The inside flooring consists of builders damp proof sheeting on a bed of sand, which was then concreted over to make the internal flooring. It is completely dry inside, a most satisfactory situation.

However in these days security is probably a greater problem than the exclusion of damp from the workshop. After some thought I decided to put in 1" angle iron bars, length ways over the windows, at about 10 inches apart.

The angle iron can be bought at quite reasonable prices from any local Iron suppliers. This angle was cut to length and drilled to take 2 screws at each point of contact with internal battening or window frames, then painted with grey Hammerite to exclude rust. It wasn't long before I realised that the internal angle could be used to attach wooden battens drilled to accept turning tools. This seemed a good idea, but placed the tools near to the windows. This was overcome by double glazing the windows inside with transparent plastic sheeting about 4 mm thick, which takes quite a lot of force to break through and of course would make a lot of noise. It has the additional advantage of improving heat retention.

Next and most important was the door which is mounted on long leaf hinges screwed to the outside. It only needs a screwdriver to take off the hinges within minutes so each leaf of the hinges was drilled for one 3/8th Engineering Bolt which was secured by a nut on the inside, of the door framings.

Attempts by a Burglar one winters night to snip off outside locks and hasps with bolt cutters indicated the need for more than one type of locking system.

Those sheds or workshops which had internal locks where the key had to pass through the door, on this occasion were not entered. I presume because any levering action would have made too much noise.

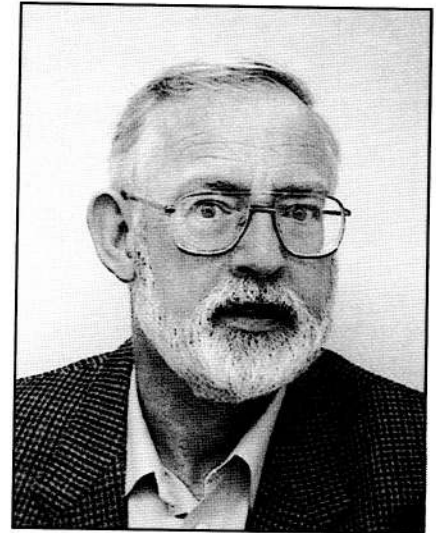
Our local Locksmith on request advised a pair of heavy steel right angled brackets bored on one least with 2 bolt holes to bolt to the door framing and the door, and 1 hole on the other leaf for the lock hasp to pass through. The Lock was of a kind that twists round on closing to nearly completely cover the lock hasp, thus preventing bolt cutters any hope of a grip.

It is no doubt a very good system but I had a moments doubt when I found this super lock - £38 and £45 with the hard steel brackets was made by "Junk Inc New York City").

I had already bolted through the door and door framing a very large galvanized heavy draw bolt secured by a Yale Lock with a 1/2" hardened hasp. (which had already beaten the bolt cutting attempt) But which the Locksmith said were easily over come. (On reflection this was probably a sales pitch).

As the contents of the Workshop grew in value, with all the new equipment bought with the vast profits! made from my Woodturning, thoughts began to turn to Security lights. Firstly bulk head lights were fitted on the outside apex of the workshop, and all internal lighting arranged to be controlled from the house. The problem however with putting in a flood light Security lamp, seemed to be that the usual range of PIR detectors is about 15 metres, some 45 feet and my workshop is about 65 feet from the back of the house! Finally this was overcome by the installer mounting the Security light and PIR just under the eaves of the house. It works perfectly! Foxes Owls & Cats prove it regularly! The trouble is that when the Halogen lamp blows its a long way up to change it and the last thing I thought I would have to buy when took up Woodturning was an 18 FOOT LADDER !!

Profile on Tony Witham Branch Representative



I was born in Walthamstow East London on my sisters fourth birthday the 3rd August 1943, I have also a younger brother.

On leaving school I served a six year apprenticeship in horticulture, on completion I left London and went to live in Devon and worked on a hill farm on Exmoor. This is where I first started working with wood as in the winter we made sheep hurdles and gates, we used very crude tools and the dowels that we used were whitened with a pocket knife.

On one of my return visits to London I met my wife Christine and so decided to move back to London. After a succession of different jobs, which you could find easily in those days, I started working for the Post Office now British Telecom whom I worked for for twenty nine years until I accepted redundancy in 1992. I then started woodturning full time.

I first started woodturning in 1969 just after my son was born when I wanted to make some wheeled toys. As there was no spare money at that time, having just entered into a mortgage to purchase a house, my lathe was made from a bicycle spindle, a washing machine motor and some blocks of wood. Then I made some scraping tools from

old files this was my first ever attempt at woodturning as the school that I had attended concentrated on metal work and engineering, which I hated but has come in handy since my woodturning has progressed with the need to make different jigs and tools. After a short time I built a lathe from picador parts but still using the washing machine motor and found that I was being asked to make more wheeled toys for friends and neighbours. At about this time my wife Christine and I decided to move home to give our children a better environment to grow up in so we purchased a house near Frinton-on-sea Essex.

I came across a book on woodturning written by Peter Child called The Craftsman Woodturner and so it was at this time that I started turning bowls, vases, light pulls, etc. and selling at craft fairs. Out of the profits I decided to buy a woodturning lathe which was the Arundel, after waiting six months I picked the lathe up from the works in Newark and what a difference this lathe made, most of the problems that I was experiencing disappeared.

After scanning through various woodworking magazines I discovered Craft Supplies who were advertising a seminar at

High Peak College, and what a fantastic weekend we had just being able to talk to other woodturners let alone seeing the various demonstrations. It was soon after this that I attended an advanced woodturning course with Ray Key turning natural top bowls from wet wood on the first day and platters on the second day, I went home enthused with new ideas.

Soon after becoming a member of the AWGB I received a letter from a Micheal Marsh asking for people to attend a meeting at Peter Childs on a Sunday morning, that morning was the start of Suffolk, Essex and Cambs Borders Branch, two years later I was elected onto the committee as chairman. In 1994 I attended a branch representatives meeting in Rugeley and was elected to serve on the committee of the AWGB. I have a strong belief in the aims of the Association and my aims as a Branch Representative to promote closer inter branch co-operation and for branches to keep us informed with new information that they feel would benefit others, as you only get out what is put in. I would like to take this opportunity to thank all those branches that responded so well to the request for exhibits for the Wembley Show as this was at short notice over the telephone, well done.

News from the Committee

Ideas for increasing membership

Some of the 'founder' affiliated Branches are well versed in increasing their membership, but some of the newer Branches may feel that the following ideas have some advantages for them. They are based on the belief that the strength of any national organisation is in its membership.

Attracting New Members

1. Advertise locally (anywhere and everywhere)

near the venue of branch meetings is a must
local libraries
churches
surgeries
shops
local council publications and directories
local "free papers" in the "What's on" feature
local tool, equipment and timber suppliers.

A4 posters displayed locally giving details of meetings, venue, dates, times and programme (if possible) and you must include a contact name and phone number.

2. Hold local exhibitions and advertise Branch details.

3. Attend local flower shows, horticultural shows etc. and examine the possibility of selling members work, or even a demonstration.

4. Contact your local press with details of your programme and invite them to interesting events - one day workshops, mini seminars, famous/international demonstrators. They will generally only be interested in events before they happen and may send a photographer to the event. Send lively and interesting reports to your local press about the events. If you can get a contact name at the newspaper all the better. A couple of phone calls tends to help things along.

5. Have a small group or one member responsible for advertising the Branch and attracting new members.

6. Have leaflets made available at local suppliers - provided it is free. Make sure there is a contact name and phone number and any other information you think appropriate, venue, time, date.

7. Encourage members who do craft fairs to promote the Branch and distribute leaflets.

8. Ensure printed programmes are available for prospective members so that they can see who will be demonstrating. Once again ask members to take a few, just in case they meet someone.

9. Make contacts in your local secondary schools (design technology departments) and maybe sponsor a junior member or two for a year.

10. Will your local supplier arrange a taster day?

Keeping New Members

1. Follow up enquiries with an invitation to the next meeting.

2. A telephone call for a chat and an invitation to a meeting usually sparks an interest, and we all know what happens once you are hooked.

3. Give new members details of the year ahead and any old copies of your newsletter, provided you have a newsletter.

4. Allow prospective members a couple of free sessions before committing themselves.

5. Assign a Branch member to seek out new members, welcome them and have a chat.

6. Ask new members to show who they are at the start of the meeting and point out who the assigned new member co-ordinator is, just in case some one has been overlooked.

7. Offer tuition to those who seek it, provide that you have the facilities and expertise.

8. Establish a "buddy" system where new members are assigned a member who can give them advice.

9. Establish a library of videos and books and ensure that they are available at each meeting.

YOUTH POLICY

To build on the secondary school suggestion, the Committee have decided to adopt the following policy forthwith;

1. The AWGB will sponsor two juniors (under 18 years) in each Branch annually, provided that the Branch sponsors them locally.

2. A new lathe has been bought solely for the use of a junior member. Branches and individual members may nominate a junior member to receive, for one year, the loan of this lathe. Nominations will be asked for via REVOLUTIONS. This will be presented annually.

3. Chris Lindup has accepted the added responsibility of Youth Development Officer.

4. Money will be made available from the International Seminar auction fund to finance and subsidise this Policy.

Catch 'em young

We have given you some ideas about attracting new members which might apply to junior members as well, but here are a few more pointers;

1. Can you provide free tuition to junior members?

2. Can you provide a "loan-a-lathe" locally?

3. Make contact with secondary schools and find out what would help them.

4. Invite design technology teachers along to meetings.

5. Can you offer demonstrations at a school?

6. Consider offering taster courses specifically for juniors.

It is accepted that not all Branches can afford to have assets or indeed want them. Equally it is very difficult to offer tuition if there is no member capable of providing that tuition. These are only suggestions. One area that we may be able to assist with, is the provision of a suitable poster for your Branch. The Committee would welcome any other constructive ideas or may be you would like to utilise your Newsletter - **REVOLUTIONS** - to pass on any suggestions to other Branches.

10th Anniversary - 1987 / 1997

Branches have been asked to canvass members to find out what, if anything, they would like to see in the way of merchandise, ties, sweaters, etc. Anyone who has a suggestion please write to the Secretary so that the Committee can discuss the matter on 15th September.



Robert Sorby wish it to be known that they are once again available for demonstrations and talks

ROBERT SORBY, ATHOL ROAD
SHEFFIELD S8 0PA
TELEPHONE 01142 554231

Sorby competition

Win a superb lathe worth over £1,000 inc. VAT **TEENAGERS AND BEGINNERS**

TONY WALKER was a familiar face at woodworking shows all over this country and abroad and since his untimely death earlier this year he has been much missed by all who knew him.

In his memory, Robert Sorby, who was his last employer, has decided to sponsor a woodturning competition aimed specifically at young craftsmen of 19 years of age or under and those, not so young, but with no more than three years regular turning experience.

The first prize generously donated by Robert Sorby is a superb RS Series lathe worth over £1,000 inc. VAT. It is of cast iron construction and features a 360 degree swivelling headstock, solid bed bars and a heavy-duty rigid stand - the very machine for the serious woodturner.

Second prize is a five piece set of Robert Sorby Microtools worth £60 and there are 10 runner-up prizes of a Microtool worth £10.

All you have to do is send us what you regard as your best piece of turning to date together with the entry form duly completed and signed.

Entry to the competition

Competitors may enter as many pieces as they wish, but may win only one prize. There

is no specific theme and they need not have been made especially for this competition.

All entries will be examined by the judging panel (who will have no knowledge of entrants' names during the judging process) and marks will be awarded on the following qualities:

- 1) **Craftsmanship:** skill in using tools and the quality of finish
- 2) **Design:** whether the item performs its function well and is visually pleasing
- 3) **Originality:** is the design of the item original or copied from an existing design
- 4) **Good use of materials and general appeal**

How to enter

Simply complete the entry coupon on this page and send it with your entry to the address shown.

Return of entries

All entries will be returned after they have been judged and displayed at the National Woodworking and Turning Exhibition which takes place at the National Exhibition Centre from 4th to 6th October 1996. Alternatively entries may be collected from the exhibition hall on the last day of the show (Sunday 6th October after 5pm). All entrants will be given free entry to the show for the Sunday.

RULES

The competition is open to U.K. readers only, either 19 years of age or under or with no more than 3 years experience of woodturning, other than employees (and members of their families) of Nexus. Entries must be in the form of an object or set of objects, practical, functional or decorative, and should principally be made on a woodturning lathe. They should be constructed mainly of wood and may be finished in paint, varnish, stain, etc. Other materials may be used for decoration and non-wood mechanisms and accessories may be incorporated. Items for this competition should not have been entered in previous competitions other than local club or association events. Any entry arriving after the closing date will not be considered and no responsibility can be accepted for entries lost, delayed or damaged in the post or elsewhere. Entries received incomplete, not accompanied by an entry coupon or not complying with the instruction and rules will be disqualified. The judges' decision will be final. All items entered for the competition must be the entrants' own work. Winners will be notified before the end of the show and the results will be published later.

ENTRY COUPON

**This form must accompany any entry submitted
TEENAGERS AND BEGINNERS**

To be sent with entry to: *Practical Woodworking,
Teenagers and Beginners' Competition, Nexus House, Boundary Way,
Hemel Hempstead, Herts HP2 7ST*

Name.....

Address.....

Postcode.....Telephone No.....

Description of Piece(s).....

Wood(s) used.....

Signature.....Date.....

WOODTURNING & WOODCARVING COMPETITIONS

GREAT YORKSHIRE SHOW 1996

HARROGATE, NORTH YORKSHIRE

These annual competitions were held on the 9th, 10th & 11th July, with the winning competitors of both sections receiving prizes of cash, tools and vouchers, to a total value of £1,000.

Sponsored by The Yorkshire Agricultural Society, John Boddy's Fine Wood and Tool Store, Henry Taylor Tools, Ashley Iles Tools and Robert Sorby Tools.

THE WOODTURNING COMPETITION

was judged by Mr. Chris Stott of Scunthorpe who awarded the following:

GOLD:	Mr. D. Rushworth, Ossett	Olive Ash Platter.
SILVER:	Mr. P. Tallon, Abbeywood, London	Flower Vase in Burr Maple and Burr Elm.
BRONZE:	Mr. I. Clarkson, Hebden Bridge	Natural Edge Bowl in Sycamore.
HIGHLY	Mr. R. Potter, Selby	Mantle Clock in Olive Ash.
RECOMMENDED:		
RESERVE:	Mr. H. Middleton, Bradford	Spalted Beech Bowl.

WOODCARVING COMPETITION

was judged by Mr. G. Jackson of Doncaster, who awarded the following:

GOLD:	Mr. P. Desmond, Braintree, Essex	"Jade" Figure of a dancing child in English Walnut.
SILVER:	Mr. J. Longbottom, Halifax	Teal Duck in Lime and Walnut.
BRONZE:	Mr. W. Hodgson, York	Figure of a Lady in Lime.
HIGHLY	Miss. S. Worthington, Sheffield	Abstract group of Figures in Lime.
RECOMMENDED:		
RESERVE:	Mr. E Morgan, Sunderland	Swallow on a mirror surround in Lime.

Both judges commented on the difficult task they had on choosing the winners due to the high standard of entries.

The need more entries next year and there is plenty of time before July 1997.

Entry forms will be available from 1st March 1997 from:

The Yorkshire Agricultural Society, Yorkshire Showground, Hookstone Oval. Harrogate, North Yorkshire. HG5 2PW.	OR	John Boddy Fine Wood & Tool Store Ltd., Riverside Sawmills, Boroughbridge, North Yorkshire. YO5 9LJ.
---	----	--

All entry forms must be returned to the Yorkshire Agricultural Society address by mid May 1997.

In addition to the two competitions, both the Woodcarvers and Woodturners Associations will be represented, with members demonstrating their skills.

**So start carving and turning now, in a Temperate Hardwood or Softwood and
make a date in your diary to visit the show.**

Yandle's of Martock

Autumn Woodworking Spectacular

Friday 6th & Saturday 7th September, 1996

10am-5pm each day

General Information

The following demonstrators and companies will be at the show for both days:

Jack Bamsey	Matt Calder	Robbie Farrance
John Hunnex	Colin Hickman	Toby Kaye
Oliver Plant	Dave Register	Reg Sherwin
Martin Turner	Rosemary Tryhorn	Chris Weeks
Jan Sanders	Zoe Gertner	Hugh O'Neil
Mark Baker	Elizabeth Mangles	

Members of the local carving society and marquetry society will be demonstrating

Companies attending will include:

Ashley Iles (with Tony Iles), Sorby, Henry Taylor, Liberon, Rustins, Chestnut, GMC Publications, Good Woodworking magazine, Record Power/Corone/Electra Beckum, Elu, Black & Decker, Draper, Shopsmith, Trend, Freud, Dremel, Chesterman Marketing, Tormek/Brimac, Martin Tools, Record Marples, Carroll Engineering, Delta Woodworking.

Timber, books, carving and turning tools, wood finishes, lathes, bandsaws, planes, sanders and general woodworking machinery, power hand tools, hand tools, routers, sharpening equipment, numerous assortment of general woodworking equipment and related products will be on sale, many at special show prices.

PLUS

New exhibition in the Somerset Guild of Craftsmen Gallery
Many special prices on tools, timber, machinery and accessories
Large refreshment marquee - serving tea/coffee, lunches/teas all day

Admission and parking free

Most credit cards accepted

Yandle & Sons Ltd

Hurst Works, Martock, Somerset TA12 6JU

Tel: 01935 822207 Fax: 01935 824484

The above information may be changed without notice, although every effort will be made to keep to the scheduled programme.

Affiliated Branches

AVON & BRISTOL

Secretary: Alan George, 276 Filton Avenue, Horfield, Bristol, BS7 0BA **Telephone:** 01179 697338
Meetings: 3rd Thursday of each month **Time:** 7.30pm **Venue:** Keynsham Baptist Church Hall, High Street, Keynsham Bristol

CUMBRIA WOODTURNERS ASSOCIATION

Secretary: Geoffery Campbell, Halewood, Glebe Road, Bowness-on-Windermere, Cumbria. LA23 3HB **Telephone:** 01539 442641
Meetings: 3rd Saturday of each month **Venue:** Varies - please write for details

EAST HERTFORDSHIRE

Secretary: Nick Bright, 9 Yews Lane, Sawbridgeworth, Herts **Telephone:** 01279 724038
Meetings: Third Wednesday of the month **Venue:** Please write for details

EAST SURREY WOODTURNERS

Secretary: David G Granger, 290 Addington Road, Selsdon, Surrey, CR2 8LF **Telephone:** 0181 657 1895
Meetings: Last Wednesday of each month **Venue:** Varies - please write for details

HEART OF ENGLAND

Secretary: Marilyn Cox, 12 Fields Close, Badsey Evesham Worcestershire WR11 5JN **Telephone:** 01386 830196
Meetings: Every sixth Friday **Time:** 7.30pm **Venue:** The Scout Hall, Tiddington, Stratford-on-Avon

HERTS & BEDS

Secretary: Mike Sheaf, 51 Hart Hill Road, Luton, Bedfordshire. LU2 0BA **Telephone:** 01582 36382
Meetings: Second Tuesday of each month **Time:** 7.30pm **Venue:** The Cork Room, Adey Fields Centre, Hemel Hempstead.

KENT BRANCH

Secretary: Chris Wilson, Longacres, Chart Road, Chart Sutton, Maidstone, Kent. ME17 3RB **Telephone:** 01622 842097
Meetings: Please write for details as date and location vary.

MIDDLESEX WOODTURNERS ASSOCIATION

Secretary: David Harrop, 68 Burgess Road South, Beaconfield, Buckinghamshire. HP9 1EJ **Telephone:** 01494 678201
Meetings: 2nd Thursday of each month **Time:** 7.30pm **Venue:** Hayes Manor School, Wood End Green Road, Hayes, Middlesex

MID MARCHES WOODTURNERS

Secretary: Paul Balcomb, Bodgers, 5 Caefelyn, Norton, Presteigne, Powys. LD8 2UB **Telephone:** 01544 267010
Meetings: Last Monday of each month **Venue:** Presteigne Memorial Hall

MID - STAFFS WOODTURNERS ASSOCIATION

Secretary: Graham Allen 132 Green Lane, Rugeley, Staffordshire. WS15 2AU **Telephone:** 01889 585037
Meetings: First Friday of each month **Venue:** The Village Hall, Etching Hill, Rugeley, Staffordshire

NORFOLK WOODTURNERS SOCIETY

Secretary: Bernard Rose, 63 Belmore Road, Thorpe-St-Andrew, Norwich, Norfolk. NR7 0PR. **Telephone:** 01603 36990
Meetings: 3rd Wednesday of each month **Venue:** Fakenham High School or Beetley Village Hall, Nr Dereham, Norfolk

NORTH LONDON WOODTURNERS GROUP

Secretary: Robert Craig, 55 Woodside Park Rd, Finchley, London. N12 8RX **Telephone:** 0181-446 0679
Meetings: Third Thursday of each month **Venue:** Varies - please write for details

SCOTSWOOD

Secretary: George W Hunter, 3 Dundas Avenue, North Berwick, East Lothian, EH38 4PS **Telephone:** 01620 892293
Meetings: Varies - Please telephone for details

SOUTH CHESHIRE & STAFFS

Secretary: Barbara Fishburn, 12 St Leonard's Avenue, Ipstones, Stoke-on-Trent, Staffs. ST10 2 QD **Telephone:** 01538 266468
Meetings: Second Thursday of each month **Venue:** Senior Citizens Centre, Hanover Street, Newcastle-U-Lyme

SUFFOLK ESSEX CAMBRIDGE BORDERS

Secretary: M J Marsh, 21 Stour Gardens, Great Cornard, Sudbury, Suffolk. CO10 0JN **Telephone:** 01787 371842
Meetings: Second Tuesday of each month **Venue:** Peter Childs, The Old Hyde, Little Yeldham, Halstead Essex

SUFFOLK MID-COASTAL

Secretary: Jeff Moss, 29 Barton Road, Woodbridge, Suffolk. IP12 1JQ **Telephone:** 01394 383569
Meetings: First Thursday of each month **Venue:** Village Hall, Marlesford, Suffolk.

THAMESIDE WOODTURNERS ASSOCIATION

Secretary: Alec Owen, 27 Leigh Road, Leigh-on-Sea, Essex. SS9 1JP
Telephone: 01702 73137 (Day) 01702 74757 (Eve's)
Meetings: Second Wednesday of each month **Venue:** Ridley Studios, 27 Leigh Road, Leigh-on-Sea, Essex

THE VILLAGE WOODTURNERS

Secretary: Robin Buckley, 130 Garton End Road, Peterborough, PE1 4EZ **Telephone:** 01733 347296
Meetings: **Venue:**

WEST CUMBRIA

Secretary: Geoff Robinson 2 Countess Road, Bransty, Whitehaven, Cumbria. CA28 6BS **Telephone:** 01946691803
Meetings: **Venue:**

WEST MIDLANDS

Secretary: Graham Lovett, 66 Beachcroft Road, Wall Heath, Kings Winford, West Midlands. DY6 OHX **Telephone:** 01384 77398
Meetings: Every 6 weeks. **Venue:** Water Orton Primary School, Vicarage Lane, Water Orton, Birmingham, West Midlands

WEST NORTHANTS WOODTURNERS

Secretary: Mal Hill, 2 Kings Green, Prior Park, Daventry, Northamptonshire. NN11 4UB **Telephone:** 01327 72982
Meetings: Third Wednesday of each month **Venue:** Long Buckley RFC

WORCESTERSHIRE WOODTURNERS

Secretary: John Milward, 39 Summer Road, Kidderminster, Worcestershire. DY11 7JS **Telephone:** 01562

News from the Branches



East Surrey Woodturners

The East Surrey branch seems to be growing quite rapidly. We can now boast 44 members. We have been fairly busy of late. One of our main interests at present is some support we have been asked to give to a local charity for mentally disabled at Oaks Park Centre Purley. Some people will be interested to know that this is where the Oaks race was first run. We have a permanent display of items for sale in that Centre, which of course has to be topped up from time to time. Information on AWGB is also on display in the Centre. We are looking forward to our third visit to the Selsdon Wood Country and Forestry Fayre Aug 18-19th. We hope some members from other branches will visit us and give us some support. Entrance to the show is quite free, we cannot of course do anything about the weather. However the branch has invested in an open sided canopy just in case. Our monthly meetings are held regularly at The Edgecombe Centre, Monks Hill, Selsdon on the last Thursday not as shown elsewhere, the exception being the August meeting when the hall is being used for another function. Our August meet will be on the Wednesday 28th. On that occasion we will have a hands on evening turning goblets. Forthcoming meetings will include lace bobbins and Welsh lovespoon carving.



Cumbria Branch

Cumbria branch will be holding a Craft Fair on Saturday 7th and Sunday 8th September at the Windermere Steamboat Museum. A Barbeque will be held at the same venue on the evening of Saturday 7th

Other events planned include September 21st Phil Irons demonstrating at the John Ruskin School, Conistonn. October 19th Dave Muschamp will be talking about the safe and practical operation of popular power tools. The competition will be 'Make something for the kitchen' 10.00am to 12.00pm at Burnside Village Hall. November 16th Tony Caplin will be demonstrating his turning skills at the John Ruskin School 10am to 4.30pm. Tickets £5.

More information on any of these events from the Secretary Geoff Campbell. Address and tel no opposite.



We are a very active branch, with two meetings per month, most of which are whole-day sessions on Saturdays. They are normally held at The Apple Craft Centre, near Faversham, where facilities are excellent. Kent is a large county and our membership is spread over an area some 70 miles by 45.

Recent meetings have concentrated on "in-house participation", with members being encouraged to stand up and make shavings. One meeting per month is completely informal and un-structured, with no pre-arranged programme. Several members have mini-lathes which they bring along for others to use, and this always leads to lively discussion on techniques and the different ways of approaching a particular problem. It would be a brave person - yes, we have some lady members - who could deny that they had learned something useful by the end of the day.

In June, Stan Brittain, one of our members, gave the branch a superb demonstration of ways of "decorating" turned items by attacking them with an angle grinder while the workpiece is turning in the lathe. The different relationships between lathe speed, its direction of rotation, and the way in which the angle grinder is applied, were explained and demonstrated in detail. Colouring with aerosol sprays led to some wonderful and most unusual finished work but overall it is a dangerous operation and not recommended for a novice turner. We now have closed-circuit TV and this greatly enhances the value of a demonstration.

Members are also encouraged to bring items to meetings for display, discussion and criticism. Points, which are awarded to those who do so, are added to points for attendance at meetings, and this leads to a prize every six months.



Over halfway into the year it is time to reflect on the activities of the West Midlands Branch during the past six months. We have continued to maintain a healthy membership with a 'regular attendance at our six weekly meetings of between 35 and 40, which hopefully indicates that the majority of members are happy with what is organised by the committee on their behalf.

We must be going in the right direction because in January we had 45 members attending the AGM!!!, which by any standards is pretty good.

In a continuing effort to bring variety to meetings for the membership, a

series of one day Mini-Seminars are organised through the year. Our first visitor, in March, was Ray Jones, making his second visit (and no doubt not his last), who demonstrated to a very enthusiastic audience, in a way that only Ray can.

Our second day long meeting was with Bill Jones who amazed all present in his quiet, brilliant way, (or should that be "quite brilliant way"). Who could fail to marvel at his so effortless thread chasing and use of his home made tools and accessories. A truly excellent day from a master, and we are glad we managed to "book" him before he thinks about easing into retirement.

In July for our third Seminar, Keith Rowley paid us a visit and gave us all a most entertaining and informative day. There are those who turn and those who teach; Keith proved to be one of those who can do both.

From the three day sessions held so far this year it will be seen each demonstrator has treated us to something different and for our final Mini-Seminar on 10th November, when Chris Stott pays us a visit, the trend will be continued.

In addition to the day long events, our regular meetings have been as varied - Hands on Sessions, a visit by the Craft Supplies Road Show, an open night with Mid Staffs, and South Cheshire and Staffs Branches, and involvement with Water Orton Primary School, (our regular meeting place) on the occasion of their School Fayre, and one of our Community Involvement projects.

To round off the final third of the year a visit to one of our founder member's home and workshop, that of Phil Brownlees at Tenbury Wells, is planned for early August, and further Community involvement in a Display /Demonstration/Competition at a local Horticultural Show. The year will see a further hands on session and Christmas get together before its end. All in all a very busy year, and one which we will attempt to equal in 1997, which is also the 10th Anniversary year of the Association.

A warm welcome is extended to any A.W.G.B. member to our meetings - for details contact the secretary, Graham Lovett on 01384 277398.



In April we welcomed Ray Key for a whole day's seminar. It was well attended and Ray gave help and inspiration to everyone. He donated one of the demonstration items to the club to use in Fund raising, for which we are very grateful.

On a hot day in June, members were invited to Ken Allen's Open Day. This was held in his back garden. Alan Hewitt, Reg Shensin, Jan Sanders and Ken Allen were among the demonstrators. About 20 members of our Club were there enjoying the demonstrations, the barbecue and the chance to chat with like-minded friends. Jan Sanders' lathe was located under the shade of a tree that had a nestbox inhabited by a family of Bluetits. The birds took no notice of Jan, her audience or the sound of the lathe and to our delight, continued to feed their hungry, chirpy babies!

The Club was asked to mount an exhibition in Hanley Library (Stoke-on-Trent's main Library) The display from August 5th - 17th was a credit to the high standard of work and the variety that members produce. A good deal of interest was generated from people quietly changing their library booles. We hope that some of them come to one of our Club meetings.

We are looking forward to our Annual Competition in November when Graham Hughes will be our judge.

Creative Woodturning Seminar

**Horncastle Residential
College**

19,20&21 April 1996

The Creative Woodturning Seminar held at the end of April this year at Horncastle College in Lincolnshire was considered to be a great success by the participants and there was a demand for more such events to be held in the future.

The object of this seminar was to help the participants to develop a creative attitude to woodturning. Three well known turners, John Hunnax, Maurice Mullins and Chris Stott, were there to demonstrate their particular approach to creative woodturning and the techniques they employ to achieve their aims.

The seminar opened after dinner on the Friday with a few words of welcome from Brian Clifford, the seminar director. After that John Hunnax gave a presentation on the theme of "FORM the final frontier" illustrated with his superb slides and put across with his inimitable enthusiasm. In a session after lunch on Saturday Chris Stott talked about some thrilling slides of his recent work; then Brian Clifford presented a paper on "The pursuit of creativity" and showed slides of some of the best work of turners from America and the UK.

The other periods on Saturday and Sunday morning were devoted to six workshop sessions where the students spent an equal amount of time with each demonstrator. Here the demonstrators followed three themes: John's was "The challenge of enclosed forms"; Maurice followed "A design led approach to woodturning"; and Chris looked at the route "From inspiration to execution".

An important part of any residential seminar is the way the time between the formal sessions is spent - such as the discussion over a good meal or in the bar. It was clear from the 'buzz' generated at this seminar that the participants were enjoying themselves. In their evaluations at the end of the seminar many of the students said how much they enjoyed the friendly atmosphere, which was encouraged by the good mix of students and the company of like minds,

Other aspects of the seminar they enjoyed were the accessibility of the demonstrators both in and out of the workshops; the well demonstrated, practical and constructive combination of design and technique; and the inspiring attitude and professionalism of lecturers and demonstrators which promoted more creative thought processes. Generally it was thought to be a very well organised and informative seminar and there was a demand for more of the same.

It is intended that another seminar will be held in the spring of 1997. If you are looking for an enjoyable and interesting weekend watch out for announcements around the turn of the year.

**Make a date in
your diary now for
next years seminar
at Horncastle
College
11, 12, 13 April
1997**

**Details will be
announced in
Revolutions as
soon as they are
available**

WORDSEARCH

The 24 listed words are all connected with woodworking. All but one are to be found in the grid in the normal wordsearch style - you must identify the word in the list that does not appear in the grid

The answer will be given in the next edition of Revolutions

BANDSAW	PLANE
BRADAWL	POLISH
CABINET	POWERDRILL
CARPENTRY	SANDPAPER
CARPENTRY	SCRAPER
CHISEL	SCREWDRIVER
DOVETAIL	TENON
DUST MASK	VARNISH
JIGSAW	 veneer
LATHE	WALNUT
MINIATURE	WORK-BENCH
MITRE	WORKSHOP

```

. . . . .
. O N M I T R E N A L P M V Y .
. J I G S A W P D A Z I F B B .
. Q M W A L N U T R N P A R A .
. V A R N I S H E I Y N E N J .
. C L B P T E P A R D P D V T .
. Z L L M N A T T S A H O W C .
. D E A I R U N A P D J V O B .
. E S S C R E W D R I V E R R .
. K I S E P D N S S E Q T K A .
. V H E R C A R V I N G A B D .
. L C A A S R E E N E V I E A .
. E C A B I N E T W J U L N W .
. Z E N P O H S K R O W G C L .
. U H N W O H S I L O P S H K .
. . . . .

```

**The National
Woodworking & Turning
Exhibition
Hall 10, National Exhibition Centre,
Birmingham.
4th - 6th October 1996**

See and Buy

The latest equipment and materials are available from the wide range of traders, with many opportunities to compare and try before you buy. Take advantage of the special show prices.

Demonstrations and advice clinics - meet the experts

Woodturning

Woodturning demonstrations in specially built workshops complete with seating, audio and visual displays. Watch and learn from some of the best turners in the world including Bert Marsh, Ray Key, Ciaron Forbes, Melvyn Firmager and Ray Jones.

Woodcarvers

See the following woodcarving experts at work, Peter Berry, Michael Painter and Ray Gonzalez.

Competition Displays

Intricate displays of work entered into our turning and routing competitions, plus a gallery of work from the top craftsmen.

Woodturning competition entries sponsored by Draper Tools.

Routing competition entries sponsored by Elu and Trend.

Gallery of work by demonstrators sponsored by Liberon Waxes.

Tony Walker memorial competition sponsored by Robert Sorby.

Woodturning and Woodcarving

'Hands On' Tuition.

Advice from expert teachers on techniques, equipment selection, finishing, tool sharpening and other feature areas.

Woodturning sponsored by Craft Supplies.

Woodcarving sponsored by the BWA.

Craft Fair

Take a leisurely walk around the Craft Fair where you'll find woodworking and other crafts on sale.

To order discount advance tickets, simply fill in the coupon overleaf.

Lecture Programme

Free lectures covering all aspects of woodturning, carving and routing have been organised to run throughout the show. A selection of the lectures include:

Ronnie Rustin - Finishing work with particular emphasis on turning and carving.

Peter Berry - An introduction to woodcarving.

Mick O'Donnell - Sharpening and shaping tools to best effect.

Ray Key - Design evolution in woodturning.

Michael Painter - Techniques of figure carving.

Reg Slack - Spindle turning techniques.

Kirk Boulton - Timbers of the world.

Racal - Health and Safety in the workshop.

**Advance ticket order form on opposite page
Competition details on page 18 -19. Sorby Competition details on page**

The National Woodworking & Furniture Exhibition

**Sandown Park Exhibition Centre, Sandown Park Race Course,
Esher, Surrey.**

26th - 29th September 1996

9.30 - 5.00pm Daily

Kitchen Build for Charity - *NEW*

A complete kitchen built as you watch!

The main event at this year's show. Our nominated charity, The Queen Elizabeth's Foundation for Disabled People will benefit from a brand new kitchen built to their specification by our team of four experts from scratch, live at the show.

Stock Up

on the latest woodworking products. From finishes to lathes, power tools to timber, all at excellent show prices.

Question Box Live - *NEW*

Take part in 'Question Box Live' and gain valuable expert advice from our top team of demonstrators.

This is the ideal opportunity to discuss your woodworking problems and learn new techniques.

Violin making with Dominic Excell

Box making with Peter Lloyd

Cabinet making with David Savage.

Routing with Jack Cox.

Turning with Steve Cooper

Free Hints, Tips and Advice

Whether you're a newcomer or an experienced woodworker, you can learn from the experts to enhance your skills.

Well known craftsmen will provide practical advice on turning, carving and routing in designated booths at the show.

Competition Displays

An impressive display of work covering all competition entries.

Exclusive quality furniture displays from colleges

Computers for Woodworkers - *NEW*

Experience for yourself the latest CAD technology.

To order discount advance tickets simply fill in the coupon below

Call the ticket hotline on: 01442244321 and quote code: AWGB or complete the coupon today!

Tickets	'On the door'	Advance	AWGB Members	Sandown No Req -	NEC No Req -	
Adult	£7.50	£6.00	£5.50	£.....
Senior Citizen	£5.50	£4.00	£3.50	£.....
Total						£.....

Please complete and return this form with a cheque/P.O. made payable to
Nexus Special Interests Ltd or fill in your AccessNisa card details below:

Card Number:

Expiry Date:

**£2.00 Saving
for AWGB
members only**

Name: Mr/Mrs/Miss Initial.....Surname..... AWGB No.....

Address:.....

.....Postcode.....Tel:.....

All completed forms should be returned to Woodworker Show Advance Tickets, Nexus House, 0
Boundary Way, Hemel Hempstead, Herts. HP2 7ST.

To guarantee receipt of your tickets all orders must be received by Friday 20th September 1996
for the Sandown Show and Friday 27th September 1996 for the NEC Show.

take your TURN

Demonstrate your skills, see your work displayed at the National Practical Woodworking Show, and maybe win a prize in our woodturning competition, sponsored by Draper

PRIZES FOR EACH OF THE THREE CATEGORIES

1st PRIZE	items to the value of £500
2nd PRIZE	items to the value of £250
3rd PRIZE	items to the value of £125
5 runner-up prizes	items to the value of £25

WINNERS may choose items from the Draper Tools' catalogue to the value of the prize or prizes won. The prize money may be used in part payment should a winner wish to purchase something of greater value, but no refund in cash can be made if items selected are of lesser value.

CATEGORY A	Totally or predominantly faceplate turning
CATEGORY B	Totally or predominantly between centres turning
CATEGORY C	Approximately equal measures of both techniques (composite)

WOODTURNING remains a central element of our annual National Woodworking & turning Exhibition at the NEC, Birmingham from 4th to 6th October. And as always, it offers you the chance to couple imagination with skill, demonstrate your talent, and win a great prize, in our woodturning competition. Sponsorship of the competition has been taken up by Draper Tools, who will supply prizes of their high-quality tools and machinery to the value of £3,000.

Competition there certainly is — around 80 entries each year, of a very high standard — which seems to spur on entrants to even greater effort and achievement. Winners this year will be able to choose from Draper Tools' comprehensive catalogue of high-quality tools.

At the Show itself the entries will as usual form a superb display of work. Visitors will also have the opportunity to choose the item which they think should be the 'overall winner' of the competition by casting a vote, and the turner of the item receiving the most votes will be awarded a special trophy which is donated by The Association of Woodturners of Great Britain.



ENTRY TO THE COMPETITION

Competitors may enter as many pieces as they wish in each category but may only win one prize in each category. There is no specific theme and the pieces need not have been made specifically for this competition. However they should not have been exhibited before at a major woodworking event.

CRITERIA FOR JUDGING

Entries may be in the form of faceplate turnings, spindle turnings, decorative turnings or as turned components of a larger project. The use of a woodturning lathe must be predominant and entries should demonstrate the use of hand skills in woodturning. Items should also principally be made of wood and may be finished in any way you choose. All accepted entries will be examined by the judging panel (who will have no knowledge of entrants names during the judging process) and marks will be awarded on the following qualities.

1. Craftsmanship: skill in using tools and the quality of finish.

2. Design: whether the item performs its function well and is visually pleasing.

3. Originality: is the design of the item original or copied from an existing design.

4. Good use of materials and general appeal.

REGISTRATION FORM

PLEASE NOTE, THIS IS NOT AN ENTRY FORM TO BE SENT TO:

TAKE YOUR TURN Woodturning Competition,
c/o The Editor Practical Woodworking, Nexus House,
Boundary Way, Hemel Hempstead, Herts. HP2 7ST

Name _____

Address _____

Postcode Tel. No. _____

Category or categories entered _____

Description of piece(s) _____

Wood(s) used _____

Date _____ Signature _____

Estimated value for insurance _____ AWGB

This form should be completed and sent to the address shown above to arrive not later than **15th September 1996**.

ENTRY COUPON

AWGB

TAKE YOUR TURN

WOODTURNING COMPETITION

tick

CATEGORY 'A' FACEPLATE	A	
CATEGORY 'B' BETWEEN CENTRES	B	
CATEGORY 'C' COMPOSITE	C	

Please tick which category you wish to enter. When entering more than one item please indicate on a separate sheet of paper which item is entered into which category

Name _____

Address _____

Postcode _____ Tel. No. _____

HOW TO ENTER

Having first filled in and returned the registration form, all you have to do is to submit any item that you have made on the lathe and send it, together with a properly completed entry form to:

PRACTICAL WOODWORKING

Woodturning Competition, Nexus House, Boundary Way, Hemel Hempstead, Herts. HP2 7ST

Your entry must reach us no later than Friday 20th September 1996.

All entries will be returned after they have been judged and displayed at The National Woodworking & Turning Exhibition, which takes place at the Birmingham National Exhibition Centre from 4th to 6th October 1996. Alternatively, entries may be collected from the Exhibition Hall on the last day of the Show (Sunday 6th October) after 5pm.

To avoid damage in transit, please ensure that your entry is well packed, especially if it incorporates any delicate details or is at all fragile. It is a good idea to send your entry recorded or registered delivery and/or to insure your work against damage or loss in transit through the Post Office, Parcel force or with the relevant carrier. Please write your name and address clearly on the outside of your packaging. Whilst it is not intended to open any entry/parcel prior to its arrival at the Exhibition Hall to avoid unnecessary unpacking and repacking during

transit, any parcel that shows obvious signs of damage on arrival will be opened immediately to ascertain if any parts are broken or damaged.

ALTERNATIVE ARRANGEMENTS

Entrants who wish to make alternative arrangements for delivery of their work are invited to telephone the magazine's editorial offices (Tel: 01442 66551) to discuss the problem.

REGISTRATION

Before submitting your finished piece of turned work we ask you to complete the registration form and send this in separately to the magazine. This allows us to label the entries and produce graphics in

**REMEMBER
BEFORE SUBMITTING
ENTRIES WITH THE
COUPON ABOVE, A
PROPERLY
COMPLETED
REGISTRATION FORM
SHOULD HAVE
PREVIOUSLY BEEN
SUBMITTED**

sufficient time to describe the items before putting them on display in the Exhibition Hall.

All entrants will be given free entry to the Show for the Sunday, to allow them to attend the prizegiving and to collect their entries if they wish.

RULES

The competition is open to all readers resident in Great Britain, Northern Ireland and the Channel Islands, Eire, Isle of Man, other than employees (and members of their families) of Nexus Special Interests.

Entries must be in the form of an object or set of objects, practical, functional or decorative, and should principally be made on a woodturning lathe.

They should be constructed mainly of wood and may be finished paint, varnish, stain, etc. Other materials may be used for decoration and non-wood mechanisms and accessories may be incorporated.

Items for this competition should not have been entered in previous competitions others than local club or association events.

Any entry arriving after the closing date will not be considered and no responsibility can be accepted for entries lost, delayed or damaged in the post or elsewhere.

Entries received incomplete, not accompanied by a entry coupon cut from Practical Woodworking or not complying with the instructions and rules will be disqualified.

All entries will be displayed at the National Woodworking & Turning Exhibition at the Birmingham NEC from 4th - 6th October 1996. Items will be returned after this date.

The judges' decision will be final, in the event of their being insufficient entries of a sufficiently high standard, the Editor reserves the right not to award all the prizes.

Entry implies acceptance of the rules as being final and legally binding. All items entered for the competition must be the entrants' own work. Winners will be notified before the end of the show and the results will be published later in Practical Woodwork.