

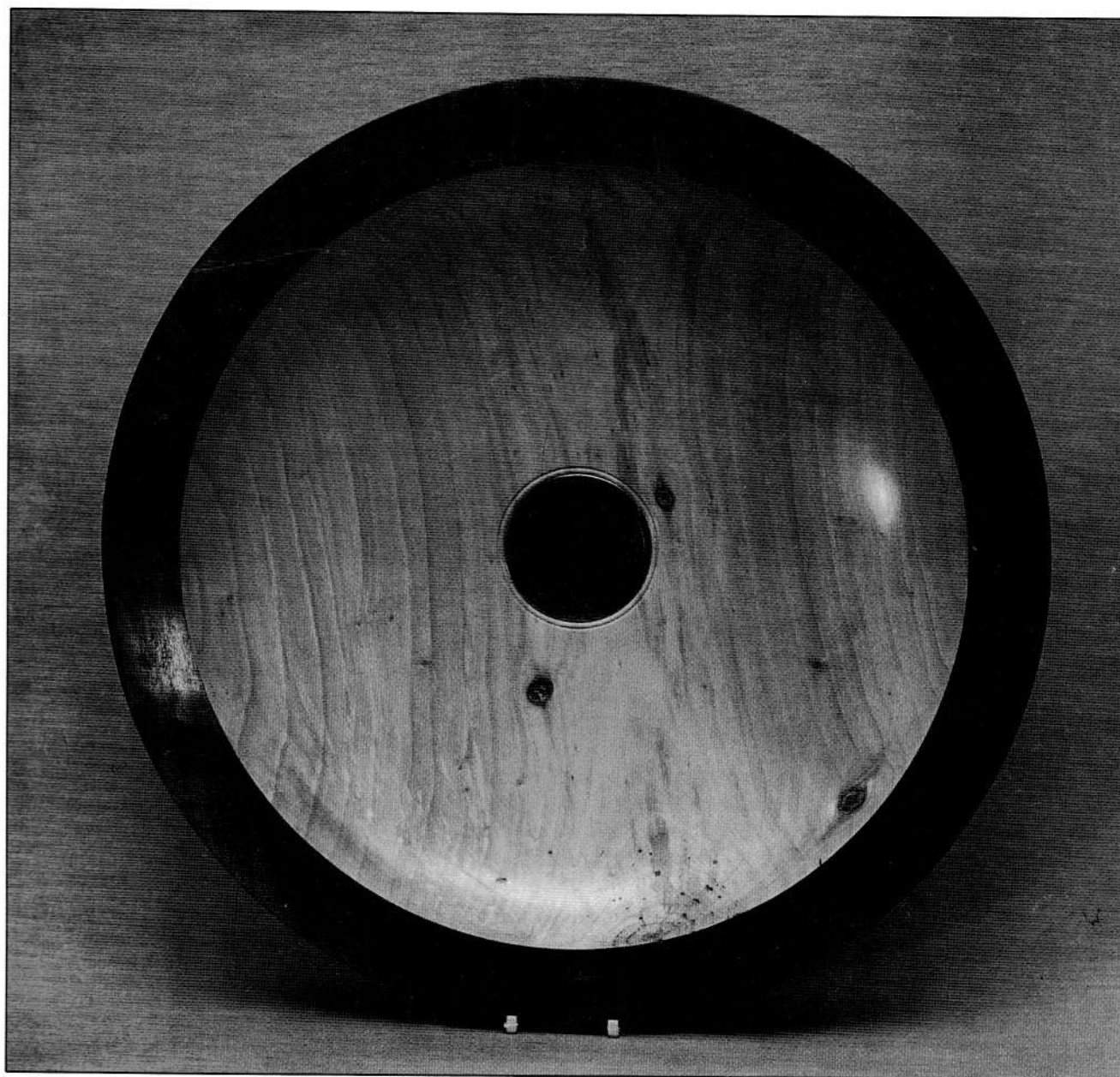


Revolutions

Issue No 36

February 1996

Newsletter of The Association of Woodturners of Great Britain



*The winning bowl at the Good Woodworking Show
Alexandra Palace - November 1995*



The Chairmans Page(s)

A belated Happy New Year to you, lets hope its a good one for us all. I hope your family and friends dug deep and bought you all the things you had been hinting at for the workshop this Christmas. If not, console yourself with the thought that at least the AWGB sent you a calendar. My notes from the Chair are in the main positive and upbeat, however there some disappointments also.

I have started putting this report together the day after our latest Committee meeting of Jan 21st which started at 11am and finished just before 6pm, it was a good nuts and bolts working meeting.

I feel I should explain the following to you, due to copy deadlines to be met, with the AGM a month earlier this year it is has proved impossible for the 1995 account, and a precis of our meeting to be included in this issue of 'Revolutions'. However both will be included in the next, and copies of the accounts will be available to all who attend the AGM.

When our financial year finishes on Dec 31st and the Accountants office only re-opens on Jan 8th, with a last possible copy date for 'Revolutions' of Jan 25th you can see why we have had a problem.

Now on to the positive, it was great to hear Mike say he was not short of copy for this issue of 'Revolutions', three articles from members, more news from the Branches, a growing number of trade adds etc, all helps to make this a more complete publication. Remember its YOUR newsletter the more copy you send Mike the better it gets. There has been a good response to the forms included in the last issue, with regards Commissions, Tuition, and the Competitions Questionnaire. One hundred and eighty four of you

responded to the Competition questions, the most significant responses were that 85% don't enter competitions, 64% felt the prizes offered were insufficient, more than 50% feel their work is not good enough, and 50% just can't be bothered. There WAS a lot of other answers but these are the clearest cut.

Seventy of you have responded to Graham Lovett with regards Commissions and Tuition most of these seventy are willing to take on Commissions and thirty two offer Tuition. This information along with firms willing to give talks, demonstrations, discounts, etc, plus the elements from the now revamped Branch Start Up Pack that encapsulates the major benefits for groups being 100% AWGB, is being included in the updated Branch Handbook. This Handbook is fast becoming the working bible for Secretaries, updates will be presented at the Branch Delegate Meeting on March 3rd, those Branches unable to send a delegate will have it sent to them, after the meeting. Through the collection of the above and other information already on file we will now be able to respond to enquiries in a more positive manner, providing a better service for our members and their potential customers.

Ken Allen reports that there are a number of new potential AWGB Branches in formation and groups already up and running are likely to come on board as they see the increasing benefits of belonging to the AWGB. Ken, Graham, and Tony Witham have visited a number of these and existing AWGB Branches in recent times, contact is still maintained with a number of the groups who at one time were part of the AWGB and we hope to welcome some of them back in time.

Tony Witham and George Hunter have now compiled a list of firms that offer services to AWGB members over and above that they offer to other customers. Verification of discounts offered is being sought from a number at this time, to avoid potentially false information being delivered, once this is done it will be published in 'Revolutions'. Frank Clarke in his new position of dealing with Trade/ Business Sponsors is doing a great job. He now has contact with some sixty firms, he is selling advertising space, helping to offset the increasing cost of 'Revolutions' as it grows and improves. The AWGB now has Membership Recruitment Form dispensers placed in some thirteen commercial firms around the country, due to Frank's and other committee members efforts. The AWGB mounted a display of work by some of our members at Axminster in December, Ian Styles of Axminster Power Tools invited us to take part in their Woodworking Show and I can report it was wonderfully organised. Frank Clarke was in charge, able stewarding support came from members of our Avon Branch, thanks fellahs you did a grand job. A few new members were recruited and Frank managed to do some sweet talking with some potential Business Sponsors. Practical Woodworking Show looms large on Feb 22nd to 25th (I hope to see a lot of you there I will be demonstrating on the P.W. Stand this year) the AWGB will be well represented, with a good display of members work, most Branches are sending work to augment what is still on hand from the NEC Show. The Clinic now requested by the show organisers will have a new leader at its helm, the white haired one (sorry Len) can't make the show this time, but has arranged for lathes from Axminster, wood from Craft Supplies and Alan Holtham to be provided. Tony Witham is in charge of the Clinic with able demonstrators and advice givers from the local Branches. Eric Ditchfield, Frank Clarke and Peter Einig from the Committee are setting things up on the Wednesday, Peter will be on the stand for three days, Frank for two and Eric one, Mike Dennis and Len hope to make one day also.

Continued on Page 4

The Association of Woodturners of Great Britain

Executive Committee

Chairman

Ray Key, The Firs, 53 Weston Road, Bretforton,
Nr Evesham. WR11 5HW Tel: 01386 830142

Vice Chairman

Chris Lindup, 38 Barry Road, Oldland Common,
Bristol, Avon. BS15 6QY Tel: 01179 325477

Treasurer

Len Grantham, Spindles, Cooper Close, Poplar
Farm, Nettleham, Lincolnshire LN2 2XX
Tel: 01522 595660

Secretary

Hugh O'Neill, Myttons Craft Centre, Myttons
Cottage, Boraston, Tenbury Wells,
Worcestershire. WR5 8LH. Tel: 01584 810266

Editor

Mike Dennis, 72 Hawes Close, Northwood,
Middlesex, HA6 1EW Tel: 01923 829844

Branch Co-Ordinator

Ken Allen, 90 Peakes Road, Etching Hill,
Rugeley, Staffs. WS15 2LX Tel: 01889 570373

Membership Secretary

Peter Einig, Keepers Cottage, Lee, Ellesmere,
Shropshire SY12 9AE Tel: 01691 622715

Exhibitions Co-Ordinator

Eric Ditchfield, 18 Shepherds Lane, Guildford,
Surrey GU2 6SL Tel: 01483 822601

Assistant Exhibitions Co-ordinator

Frank Clarke, 81 Knightwood Crescent, New
Malden, Surrey. KT3 5JP Tel: 0181 942 5463

Branch Committee Members

Scotswood

George Hunter, 3 Dundas Avenue. North
Berwick, East Lothian. EH38 4PS Tel: 01620
892293

Suffolk, Essex & Cambridge Borders

Tony Witham, 39 Horsey Road, Kirkby-le-Soken,
Frinton-on-Sea, Essex. CO13 0DZ
Tel: 01255 671697

West Midlands

Graham Lovett, 66 Beachcroft Road, Wall Heath,
Kingswinford, West Midlands. DY6 0HX
Tel: 01384 277398

Vacant

RICHARD BARRIBOS
To be elected at next Branch Delegate Meeting

Contents

Chairmans Page	2
The Association of Woodturners of Great Britain	3
Editorial	4
Winner of the Graduate Lathe	5
Questionnaire Results	7
Chris Stott visits Guensey	8
Profile on Chris Lindup	10
Obituary	11
Affiliated Branches	12
News from the Branches	13
From Down Under	16
Trade Advertisements	17

Articles, letters, tips, adverts etc featured in this Newsletter do not necessarily carry the endorsement of the Association of Woodturners of Great Britain. It is a policy of the AWGB that reviews on tools, books or products are not reported on in the Newsletter

The following woodturning videos are available for hire to members.

Turning Wood	Richard Raffan
Turning Projects	Richard Raffan
Bowl Turning	Del Stubbs
Hollow Turning	John Jordan
Bowl Turning	John Jordan
Cutting & Sharpening	Chris Stott
Turning Bowls	Chris Stott
Turning Boxes	Chris Stott
The Basic Box	Ray Key
The Capsule Box	Ray Key
The Finial Box	Ray Key

Slide Packs of the 1989, 1991, 1993 Loughborough International Seminars. - Slide Pack of the Hay-on-Wye exhibition
To hire any one video or one slide pack, Please send 2 cheques one for £5 for one week's hire and one for £30 as a deposit which will be returned on the safe return of the video or slide pack.
Please make both cheques payable to AWGB.
Application for hire should be made to: Ken Allen (Address Opposite)

AWGB LAPEL BADGES

(Brass & Enamel)

Send Cheque etc, to:

Frank Clarke (Address Opposite)

COST £2.50 inclusive of post and packing

MAKE ALL PAYMENTS TO AWGB

DATA PROTECTION ACT

If you object to your name, address and telephone number being held on a computer belonging to the AWGB, then please write to the Membership Secretary. (Address Above)

**Copy deadline for the next edition of
Revolutions
1st May 1996**

Editorial

Thank you to those members and Branch Secretaries who have sent in articles for this edition, it certainly helps me as well as making the newsletter more interesting for the members. There's not a lot of space for my editorial this issue, never mind it saves me a bit of brain damage thinking about what to say. The centre pages of this issue are unnumbered and can be pulled out for the Annual General Meeting. All the best for 1996

Mike Dennis

Chairman's Notes from page 2

Our plans for the Touring Exhibition has seen progress slower than hoped, Eric has taken up a new employment post and this has resulted in the time he can spend on AWGB being restricted at this time. However a meeting is now set for Feb 7th with our potential sponsor, yours truly is to open the batting on this one (I hope to be in better form than our England cricketers). I said in my last missive we were hopeful that progress might be made on Training linked with NVQ'S or similar, I also stated there have been many false starts and didn't want to raise false hopes, but thought this time there was a chance. Well, the positive noises from the enabling educational establishment have diminished, it looks like another false dawn. NVQ'S or similar are created in the main so that those who attain them have some accreditation as they seek employment, it has to be said there are very few employers looking for hand woodturners, which equals provision of course not cost effective. Hugh O'Neill will write a full report in the next issue of 'Revolutions' on this whole matter. You can see from the item above I am into the less positive area of my notes. I have now reached my biggest concern, the call for nominations to serve on YOUR committee has been met by an almost deafening silence. The call went out for nominations for Secretary, Treasurer and Committee members, with the Treasurer stating there was no way he was staying on despite our plea's and the Secretary saying he was 'ambivalent'. What have we got, no nomination for the Treasurers post, one nomination for the Secretaries post and one nomination for a committee post, both of the nominees are already serving members of the committee in co-opted positions and excellent they are too. What concerns me is the lack of willingness of the membership to seek election, this is the third year running there has been no need for a postal ballot, I consider this not to be a healthy position for any organisation, come next year I hope to see this has changed. What of now, Len has agreed to stay on, (thanks Len) but will need to be co-opted back to serve as your Treasurer, he has only agreed on the basis that we actively seek a successor, and will hand over to whom this may be at any time. The one bright spot on the nomination call is that there seems a good response from the Branch's on this issue and a vote will be taken at the Branch Delegate meeting prior to the AGM on March 3rd. Your present Committee has considered a proposal from Hugh O'Neill where by sub-committee's are set up to deal with specific areas, the thought being this would involve more of the membership and some say eventually feel they would like to serve on the main committee. The idea was thought to have merit, (all Seminar planning is by a four man sub-committee) it will be for the new committee to look into areas where this could work. We are looking at ways to cut our costs and generate more income, we have to do this or we will have to raise subs, and that is something we are not going to do. Our biggest single cost is 'Revolutions' we are looking at ways to have it printed cheaper, the Show (some under review), Travel, Postage, Branch Insurance and Grants are all major expenditures.

Two things were addressed by the committee to reduce costs on Jan 21st it voted itself a CUT (are our MP's listening) in travel allowance from 171/2p a mile down to 12p a mile with immediate effect, this applies to any one on AWGB business who would expect to be recompensed. Also identified was the computer expenditure, upgrade would be much less in 1996 and the maintenance premium should be axed. We are starting to cut costs and with more adds being placed in 'Revolutions' generating more income, we have a number of ideas to look into for the future which could reduce expenditure and generate income.

Can I remind those of you who have yet to renew your 1996 SUBSCRIPTION it is OVER DUE. Please don't delay, renew today, as this will be your last edition of 'Revolutions' if your subscription does not reach us by March 31st. To all of you who have renewed a big THANK YOU (close to 600 as of Jan 21st) you will have all received your new membership card, the initial feedback on these is that you like them. Your Committee looks forward to serving you in what we hope will be a progressive year of developments, with something for you all.

I end this latest missive on a very sad note, I am sorry to say, but trust that many of you will respond your usual generous way.

Our thoughts go out to the family of Tony Walker who's sad untimely death occurred at the end of November, Tony was known to a great many of you through his association with Robert Sorby. If you would like to contribute to a fund in his memory, information can be found at the bottom of a more detailed tribute to his memory elsewhere in this newsletter.

Ray Key

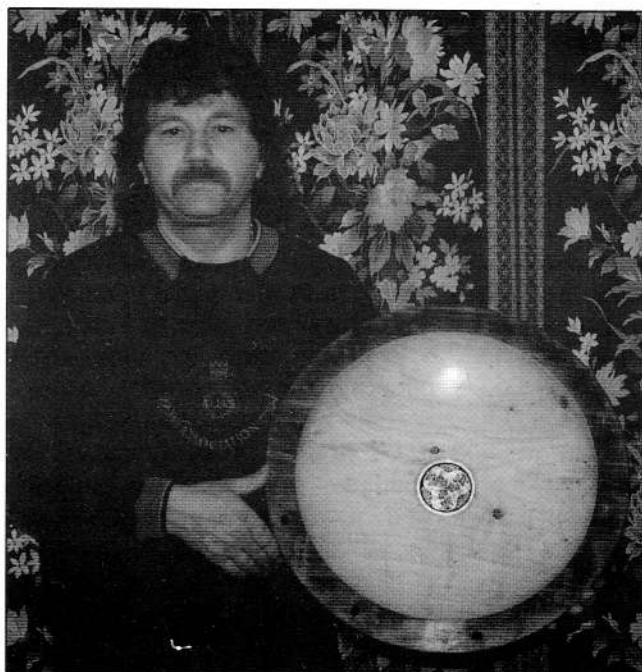
AWGB Member wins Graduate Lathe

Congratulations to AWGB member Mike Candlish who won the Graduate lathe at the Good Woodworking Show last November. Here is Mike's own account of how he made the winning piece.

As with most good fortune it started out as a bit of a disaster. A chap I buy a lot of burr wood and odds and ends phoned me in the middle of summer 1994 to ask me if I was interested in an ash tree. Usually I would not entertain fresh felled timber in the hot months, but, like every woodturner I'm a sucker for the chance of a nice bit of ash. I told him I would take it only if he would cut it into 6" slabs. (I had visions of nice big salad bowls A'la Richard Raffan) True to his word he arrived late afternoon with 4 slabs of wood 12' long 24" wide and as agreed 6" thick.

Unfortunately it was the owner of the tree that had told him it was an ash and when he arrived, to his dismay discovered it was poplar. Now this chap brings me mega amounts of really good timber, so I decided to keep the poplar as dispensable timber for face plate material. I use for reverse chucking of large bowls.

I cut it into as large a disc as I could get and end sealed it, then stuck it in the back of my wood store and promptly forgot all about it.

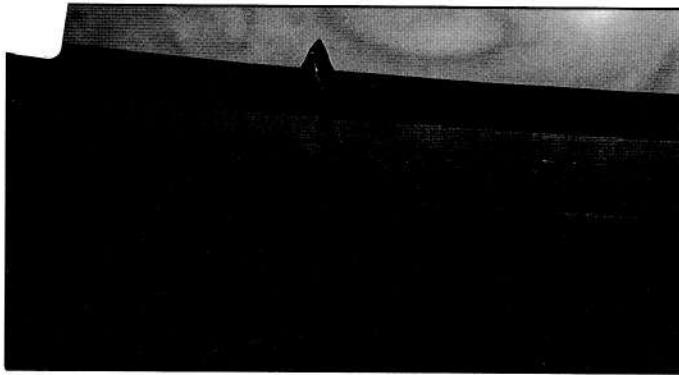


Then in 1995 along came "Braveheart" alias Mel Gibson, and got the whole of Scotland jumping up and down banging their swords on their shields, but alas no shields. So yours truly decided to capitalize on the shortage of the aforementioned protective armour and decided to make a couple for the local gallery. As this was a risky enterprise I did not want to use valuable hardwood bowl material, so I scoured my wood pile for something less expensive. I was actually moving the discs of poplar to get at something else when a thought struck me, this wood is really lightweight, of course it soon dawned on me that poplar would be ideal, not least because of it's weight, it was also very cheap, so I decided to try it out.

Now anyone who has turned softwood will know that it marks at the slightest touch, so I was going to have to find away around this. I set about turning the shields and as soon as the disc was trued up and the lathe stopped I was pleasantly surprised at the beautiful grain pattern of the wood (I have never really turned softwood before apart from some red pine when I first started turning) and before I really start rambling I'll cut to the chase and tell you how I made the bowl that won first prize in the "Good Woodworking" "Turn A Bowl Competition".

The outside of the bowl was turned to plain bowl shape then sanded down to 240 grit. I left a spigot to fit the Ax. chuck as I do with most of my large bowls. I cut a 3/4" recess just below the rim and punched a leatherwork pattern using a tool which is available from most craft shops. I then decided to texture the wood, (the shields were made to look like old leather) I did this first by scorching then I applied a Briwax Jacobean Polish (very dark) and instead of wiping it off I textured the wood using the ball of the Ball Pien Hammer. This is quite easy as the wood lends it's self to this method of working. About an hour later with a very tired right arm (no comments please!) I removed the excess polish by spinning the lathe and using a rag (non fluffy). I applied another coat of polish and before it dried completely I buffed it to a shine.

When I reversed the bowl I had already completed the rim. (I can do that with large bowls on my home made lathe). All that was left was to scoop out the centre of the bowl. When I was making the shields the idea of the texture was to give the wood a leather type look as in ancient times a lot of defensive armour was made from thick hide. I had also hammered horse shoe nails around the centre of the shield for effect. I still wanted to use the horse shoe nails, so decided to put them around the rim. I have been using Celtic design brass discs (they are coffee cup coasters really) in the centre of elm bowls for some time and decided that this would be quite effective in the Poplar. These discs come in a variety of Celtic designs (six) so I pondered which one to use, and of course the obvious choice was the horse design, as it created a theme with the design of the rest of the bowl.

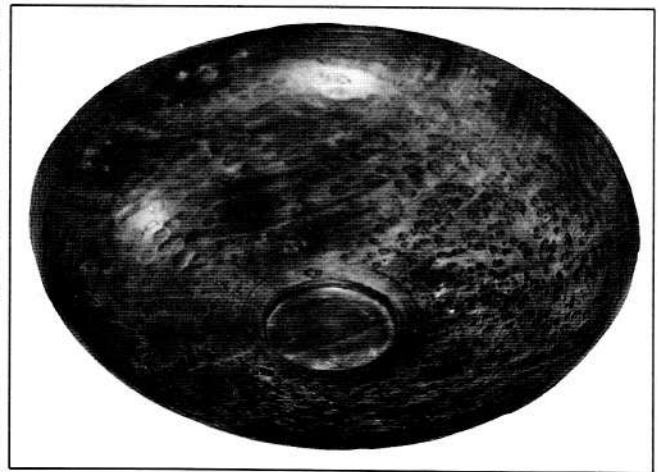


Rim detail

With the Poplar being cut in warm weather even though I had end sealed it, it still had some spider web cracks in the endgrain. Although these would usually be frowned upon in a bowl for domestic use, they do not look out of place on a decorative piece. To make sure the cracks were not going to open (although I was confident the wood was completely dry) I made staples from cut ends of the horse shoe nails and put them across the larger cracks on the rim of the bowl. Last of all I drilled pilot holes for the horse shoe nails and after cutting them down to 1", tapped them into the rim of the bowl using a spot of superglue for extra security.

I was at a Craft fair on Thursday 23rd November, 1995 and decided to phone home during a lull. My 13 year old son Calum answered and told me 'some woman' had phoned to say that I had won a lathe in a competition. At first I wasn't sure if he had got the message wrong and it should have been that I had won a prize in the Bowl Turning Competition, but he was adamant that 'the woman' had said I had won a bowl turning lathe and extras to the value of £2,300. I can tell you that my customers for the rest of that day must have thought I had been smoking 'Wacky Backy' or at least had had a sharp blow to the head! You don't often see woodturners with a demented smile on their face during a Craft Fair (at the end maybe, all you turners who do fairs will know what I mean). This particular craft fair went on until the Saturday. I left Scotland on Saturday night at 11.45p.m. and travelled down to Alexandra Palace for the presentation, arriving there at 11.30a.m. on the Sunday morning (I had a couple of hours sleep on the way down). I left the Palace at 4.15p.m. and was back home by 1.00a.m. Monday morning, needless to say I took Monday off!

Although there was a great response to the competition (94 entries) it amazes me that with so many good wood turners in Britain there is not a much bigger number of entries for this competition. Certainly I feel that I did well to win but I still regard myself as very much a plain wood turner, I stand in awe of most of the professional turners of today, I know that I had to push myself to turn a bowl for this competition, but at the end of the day I would have probably made it anyway.



Under side of the bowl

So, for the cost of postage (you get your bowl back of course) and a little bit of effort, which at the end of the day which I enjoyed tremendously, I won a beautiful Graduate bowl lathe. So the next time you see a woodturning competition, have a go!, after all I really did not expect to win, just bear in mind that it is the judges you have to please (a bit like the driving test), give them what they are looking for. As I used to say to my culinary students learning to be chefs (another life), 'If I can do it, you can do it'. All the ideas that you come up with as fanciful or daft, have a go. After all a handful of horse shoe nails and a brass coffee coaster did it for me!

The International
Practical WOOD
WORKING
Exhibition
AND CRAFT FAIR

WEMBLEY
EXHIBITION HALL

22nd - 25th February 1996

**Open daily from 10am to
6pm (5pm on Sunday)**

AWGB Regional Seminar

Turn East 96

The 3rd East of England Woodturning Seminar

Fakenham High School, Fakenham Norfolk

10th August 1996

9.30am til 5.00pm

Demonstrators include

Ray Key • Stuart Mortimer • Chris Stott
Garry Rance • Rose-Marie Yeh
plus Trade Stands & Exhibition

Admission will be by ticket only

£25.00 (includes a buffet lunch and Refreshments)

Early application is recommended for the limited number of tickets available

Bernard Rose. 63 Belmore Road, Thorpe St. Andrew, Norwich. NR7 0PR

Results of the questionnaire on entering competitions from 184 returns.
 More information in the next newsletter

Do you enter woodturning competitions?	Yes	27	14.67%
	No	157	85.33%
Is it because you think Professionals always win?	Yes	44	23.91%
	No	90	48.91%
Your work is not good enough	Yes	93	50.54%
	No	56	30.43%
Are the prizes insufficient	Yes	11	5.98%
	No	118	64.13%
You are not given enough time	Yes	25	13.59%
	No	97	52.72%
Bother of getting items to/from show	Yes	56	30.43%
	No	72	39.13%
You do not do much woodturning	Yes	72	39.13%
	No	73	39.67%
You cannot be bothered	Yes	18	9.78%
	No	105	57.07%

Chris Stott visits Guernsey

I have been an amateur woodturner for about ten years and more recently become a committee member of our local Arts and Crafts Club. As one of the few craft members of the club I was asked to suggest and plan an activity for 1995.

I suggested inviting a professional woodturner to the Island as I had never heard of anyone such like visiting previously.

At this time, I knew of only two other turners and had no idea of the level of interest and support that could be generated to make this remotely financially viable. With the blessing of the other committee members an advertisement was placed in our local paper to gauge interest. Lo and behold some 20 replies were had which meant it was now on.

Back in 1989 I attended a two day course at Craft Supplies with Chris Stott and knowing his work decided to invite Chris to Guernsey for a two day session.

This was held on the weekend of the 8th and 9th July with the venue being the woodwork shop at our local Grammar School which is a fine modern building with excellent facilities. Chris arrived by air at Guernsey airport on the Thursday before the seminar enabling him to wind down for a day or so before the weekend and get acquainted with surroundings. Friday afternoon was spent preparing tools and timber as it was not possible for Chris to bring all his usual gear on the aircraft.

On Friday evening Chris joined my wife, my daughter Hannah and myself to a 'dip and dine' at Hannah's newly opened school swimming pool. Chris dined but refused to dip. Instead he treated us to a display of his sporting skills on the school tennis courts. I had never imagined that woodturners could be so multi-talented! This sudden and unaccustomed exercise however was an experience which a lot of Chris's joints wished they'd never had for some days later. I was also amazed at Chris's level of patience and understanding when on his last evening he endured watching my awful attempts at potting snooker balls in the pockets. You win Chris!

On to the seminar. We began the first day with welcomes and introductions, performed somewhat nervously by myself, before settling down to watch and learn. Chris started off with basic spindle turning techniques then going on to make a simple box. From there he developed the theme of box making, producing some fine work including his well known ones with long top stem decorated with various shaped beads.

The next topic to be covered was bowl making going from basics on through to natural edge work. Coffee breaks during each session gave a good opportunity for discussion and questions asked on various points. It also allowed us to view the display of Chris's work, brought with him, including a laburnum hollow form on legs.



Goblets were next on the list and included a 'wobbly' goblet made from part of a small ash sapling trunk which had self-seeded in the wrong place in my back garden. This piece now contrasts nicely with the dark utile of my mantelpiece.

The final subject on Sunday afternoon was hollow form turning. Here Chris explained that once outside shape had been decided, the process of hollowing could often be long and sometimes tedious. However, on this occasion we were looking at a miniature hollow form and were able to see Chris's own design of tools in use.

Along with seeing practical demonstrations, we also had about an hour slide show of Chris's work, including his more recent, featuring the colouring of wood. This I believe was of great interest and highlighted the opportunities of exploring in this field.

To sum up, the two days which ended with an auction of the items produced, were a great success and enjoyed by all who attended. It remains now to try and find more time this year to devote to furthering activities by our new local woodturning group.

I appreciate that many folk know little about the Channel Islands. Despite being only 30 miles from France and yet 70 miles from the U.K. we are British subjects and do speak English. So if any fellow woodturners out there decide they would like to visit and meet up, feel free to call me (Ian Le Page) on 01481 723915 or Dave Armitage on 014481 726392.



**Don't let this be the last copy of Revolutions
you receive this year.**

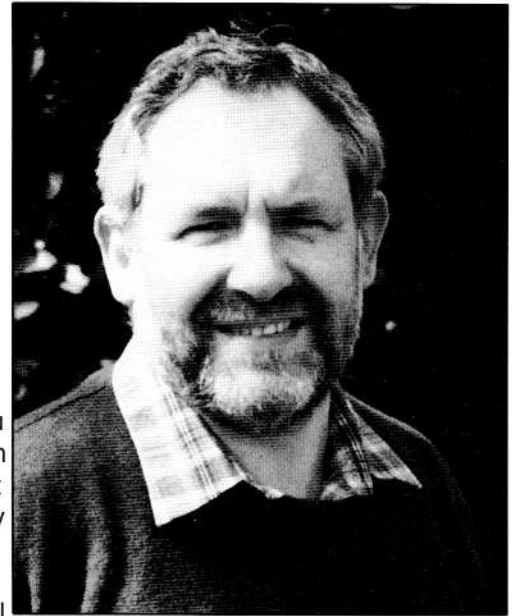
If you have not yet paid your subscription for 1996

Do it now - You know it makes sense

Where would you be without your copy of Revolutions

Profile on

CHRIS LINDUP **VICE - CHAIRMAN AWGB**



I write this profile with humility because despite my lofty title I feel you are unlikely to be a better turner as a result of knowing about me. I am aware that woodturners, me included, do seem to like to know about other turners as people in order to get a feel for what and how they think about turning so it is in this context that I tell you about me.

I have just reached two score and ten years. There is much that I still want to do, particularly in woodturning.

I was taught to turn, like many of us, at school and I developed an interest then. I think my interest was as much focused on mastering this beast that kept grabbing my tools as much as producing attractive work. The lathe and me at this stage had an uneasy relationship. I think it had the upperhand most of the time. I well remember turning several bowls from African Walnut. The scraper featured significantly in the process and so too did heavy glass papering for great lengths of time to remove the severed and bruised end grain effect I had achieved. This always seemed to be an unintentional feature on these bowls.

I trained as a teacher at Shoreditch College which was situated near Egham in Surrey and had 700 students all training to be "handicraft" teachers as we were called then ie teachers of woodwork, metalwork and technical drawing.

I spent eight weeks out of three years doing a turning course but I don't remember being taught turning. I had to rely on my own experience, which was not much and on the experience of other students as I tried to satisfy the requirements of the course, namely to turn a bowl and carve a tree. Yet again I found myself turning a bowl out of African Walnut. I had improved by now. I glasspapered for longer.

I have always regarded teaching woodwork and metalwork as my "proper" job and have spent many years in a variety of schools from Grammar School to Approved School. I taught youngsters to make all sorts of things from forgework to carving. When it came to materials for turning, every school I worked in seemed to have an endless supply of African Walnut. Dealing with the end grain on this timber when turning a bowl became a recurring nightmare, almost enough to put me off it for ever.

Over the years the name of what I teach has changed - handicraft changed to the name of woodwork, metalwork and technical drawing then to craft, design and technology then to design technology and now onto technology. We still teach pupils to make things, mostly out of wood, metal and plastic (resistant materials in the current jargon) although I am getting fed up with making nuclear power stations from cornflake packets and toilet roll centres!

It is my personal view that making things, for most youngsters, is a source of great interest and excitement. It can generate enormous enthusiasm, motivation, enthusiasm and most importantly success. I would like to make many comments about the impact that the National curriculum has had on these aspects of the teaching of "making things" but I shall on this occasion resist the temptation.

So when I had a proper job I was a teacher of woodwork and metalwork and my workshop was always very practically focused and youngsters spent most of their time enjoying making things as well as learning effectively.

I am now the headteacher of a comprehensive school in Bristol (not a "proper" job) and you may have seen me and the school of which I am headteacher on the recent BBC TV "Troubleshooter Returns" series featuring Sir John Harvey-Jones. I was "troubleshooter" and I live to tell the tale.

After a number of years with my job in school taking me more and more away from the workshop and away from making things I yearned to return to making at least. For some reason not clear to me I returned to woodturning. I sought some professional tuition and after a two day course that I paid for I was hooked beyond redemption. I was

THE ASSOCIATION OF WOODTURNERS OF GREAT BRITAIN

FORMAL NOTICE OF THE ANNUAL GENERAL MEETING

In line with the rules of the Association Members are hereby given notice of the following.

As there is no requirement for a postal ballot, there will be no other circulation of papers in respect of this meeting.

Branch Representatives are also reminded that there will be a Branch Representatives Meeting during the morning prior to the full AGM.

ANNUAL GENERAL MEETING OF THE ASSOCIATION OF WOODTURNERS OF GREAT BRITAIN

Civic Centre High Street, Uxbridge, Middlesex.
Sunday 3rd March 1996 at 2pm.

AGENDA

APOLOGIES ?

1. The Secretary will read the minutes of the Seventh AGM dated 2nd April 1995. ✓

2. Adoption of the Chairman's Annual Report ✓

3. Adoption of the Treasurer's Annual Report ✓

4. Report on Branch activities. ✓

5. Vote of thanks to retiring Officers. ✓

6. Election of Officers and Committee. ✓ +

7. Election of Auditor. ✓

8. Hon Treasurers proposals for subscriptions. ✓

9. Motions see proposals below

10. Close of the Annual General Meeting. ✓

*BRANCH - RICHARD BARNES
→ GORDON HUNTER*

← A.O.B

Treasurers Report and Statement of Accounts

These will be distributed at the Annual General Meeting and printed in the next edition of Revolutions.

ELECTION OF OFFICERS;

The Treasurer Len Grantham and the Secretary Hugh O'Neill are both standing down having held office since the inauguration of the Association. Hugh O'Neill has offered to stand as a co-optee for any task where the Association feels that he may make a contribution.

Ray Key has been proposed to stand for a further year as Chairman.

Peter Einig, presently Membership Secretary has been proposed for election to the post of Secretary.

There are no other nominations for the Chairman, Secretary or Treasurer offices.

There is one vacancy on the Main Committee. Frank Clarke, currently a co-opted member of the Committees has been proposed as a full member.

Formal nominations with proposer and seconder have been properly lodged in line with the rules of the Association and are held on file. There being no contest for any vacancy, there is therefore no call for a postal ballot.

A Branch Representative to join the main Committee will be elected from the morning meeting.

MOTIONS FOR THE AGM:

The following proposals have been made for changes to the Constitution of the Association of Woodturners of Great Britain.

Replace paragraphs 4 & 5 under BRANCH RULES with the following

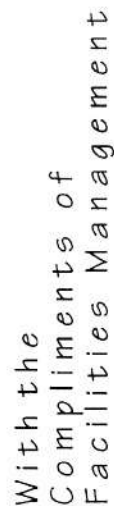
4. Each Affiliated Branch shall be invited to send a Representative to an Annual Meeting to be held at an appropriate time and to be Chaired by a Member of the Executive Committee. The business of this meeting shall include the election of up to Four Persons from those elected by the Members of the Affiliated Branches to serve as Members of the Executive Committee.
5. Each affiliated Branch shall send to the Branch Co-ordinator the name of their elected candidate 6 weeks prior to the Annual Meeting. Each affiliated Branch, whether they attend the meeting or not, shall be invited to vote by means of a postal ballot for, up to four persons, to stand for the Executive Committee. The election of the four Members shall be voted in such a way as to represent the geographical spread of Great Britain.
6. Ballot papers must be sent to the Branch Co-ordinator at least one week prior to the Annual Meeting.
7. Affiliated Branches may choose to collect a ^N~~combined~~ annual subscription to cover both the Branch and AWGB subscriptions. Branches choosing to undertake this shall receive an AWGB discount to be set annually through the AGM, per member.

REB07C

Replace Paragraph 18 under MANAGEMENT OF THE ASSOCIATION AND THE EXECUTIVE COMMITTEE with the following

18. The Executive Committee shall have the power to appoint from outside its number an Executive President to be re-appointed annually.

UXBRIDGE
TOWN
CENTRE



AWGB AGM Please use visitors Car Park in the High Street

taught the elementary stages for successful use of the skew and the gouge and I wondered how I had ever managed before.

The thrill of turning has become addictive and obsessional for me and I foresee many years of challenge and enjoyment ahead. Involvement in turning led me to take a Health and Safety course to be certificated to teach it safely in school. Don White was the tutor and it was he who in his own quiet, modest and unassuming manner led me to the AWGB. Don White, as well as teaching me during this very enjoyable and stimulating course, showed a generosity and interest that was to encourage me as a turner and to become active as a member in my local AWGB branch. Before I knew it and unexpectedly I found myself active nationally.

What am I in the AWGB for? To learn more, to be better at turning and to share it all with other turners, with the same generosity that Don White and turners like him have shown to me. I would also like look at a piece of African Walnut and feel comfortable

Obituary

It is with the greatest sadness that we have learnt of the death of Tony Walker. Tony was one of the stalwarts of the woodturning world even though his first love was carving.

Tony was a familiar face at all the national exhibitions and over the last two years had taken his own unique method of presentation to many of the branches.

His depth of product knowledge and his ability to communicate were unparalleled and derived in part from his training as a teacher.

However, frustration led him to the world of industry, initially he worked as educational advisor to Record Ridgway where he worked alongside John Sainsbury.

However, he came into his own when he moved to Robert Sorby in 1985. There his initial brief was marketing which encompassed product design and development as well as the production of catalogues and instruction sheets. More recently he spent a lot of his time promoting Robert Sorby not just throughout the U.K. but in many overseas countries where the woodturning craft is practiced.

He was one of the prime movers in some of Sorby's more recent introductions including the lathe and shear scraping tools and shortly before his death he completed a video depicting these.

Tony's premature death came as a result of an hereditary problem, and his family are now working with Neurocare, a charity for research into neurological problems.

Anyone who feels they would like to contribute to the fund in his memory should send a cheque payable to NEUROCARE at Robert Sorby Athol Road, Sheffield S8 0PA

FOR SALE WOODLATHE

Chas Taylor of Brmingham
60" Centres 20" Diameter inboard
plus to floor outboard swing
Sixteen speeds and reverse
Bargain to make space in my
workshop
Only £350

Woodturners Chisels & Gouges.
Some completely unused
Phone for details

Woodturners Floor standing tripod
tool rest in cast iron. Ideal for big
bowl or table top projects
£150

Telephone Paul or Toby
01364 642837 (Buckfastliegh)

FOR SALE Victorian balanced Treadle Lathe

In good order, could be converted for
ornamental work or motorised.
Complete with chucks, faceplate and
equipment.
Collectors item.

Would consider exchange for
something useful.
To chat about it phone John Holyoak
on 01263 740826

Affiliated Branches

AVON & BRISTOL

Secretary: Chris Lindup, 38 Barry Road, Oldham Common, Bristol BS15 6QY **Telephone:** 0117 9325477
Meetings: 3rd Thursday of each month **Time:** 7.30pm **Venue:** Keynsham Baptist Church Hall, High Street, Keynsham Bristol

CUMBRIA WOODTURNERS ASSOCIATION

Secretary: Geoffery Cambell, Halewood, Glebe Road, Bowness-on-Windermere, Cumbria. LA23 3HB
Telephone: 01539 442641 **Meetings:** 3rd Saturday of each month **Venue:** Varies - please write for details

EAST HERTFORDSHIRE

Secretary: Nick Bright, 9 Yews Lane, Sawbridgeworth, Herts **Telephone:** 01279 724038
Meetings: Third Wednesday of the month **Venue:** Please write for details

EAST SURREY WOODTURNERS

Secretary: David G Granger, 290 Addington Road, Selsdon, Surrey, CR2 8LF **Telephone:** 0181 657 1895
Meetings: Last Wednesday of each month **Venue:** Varies - please write for details

HEART OF ENGLAND

Secretary: Mike Donovan, 114 Bridgton Road, Stratford-on-Avon, Warwickshire. CV37 7JA **Telephone:** 01789 204513
Meetings: Every sixth Friday **Time:** 7.30pm **Venue:** The Scout Hall, Tiddington, Stratford-on-Avon

HERTS & BEDS

Secretary: Mike Sheaf, 51 Hart Hill Road, Luton, Bedfordshire. LU2 0BA **Telephone:** 01582 36382
Meetings: Second Tuesday of each month **Time:** 7.30pm **Venue:** The Cork Room, Adey Fields Centre, Hemel Hempstead.

KENT BRANCH

Secretary: Chris Wilson, Longacres, Chart Road, Chart Sutton, Maidstone, Kent. ME17 3RB **Telephone:** 01622 842097
Meetings: Please write for details as date and location vary.

MIDDLESEX WOODTURNERS ASSOCIATION

Secretary: David Harrop, 68 Burgess Road South, Beaconsfield, Buckinghamshire. HP9 1EJ **Telephone:** 01494 678201
Meetings: 2nd Thursday of each month **Time:** 7.30pm **Venue:** Hayes Manor Sch, Wood End Green Road, Hayes, Middlesex

MID - STAFFS WOODTURNERS ASSOCIATION

Secretary: Graham Allen 132 Green Lane, Rugeley, Staffordshire. WS15 2AU **Telephone:** 01889 585037
Meetings: First Friday of each month **Venue:** The Village Hall, Etching Hill, Rugeley, Staffordshire

NORFOLK WOODTURNERS SOCIETY

Secretary: Bernard Rose, 63 Belmore Road, Thorpe-St-Andrew, Norwich, Norfolk. NR7 0PR. **Telephone:** 01603 36990
Meetings: 3rd Wednesday of each month **Venue:** Fakenham High School or Beetley Village Hall, Nr Dereham, Norfolk

NORTH LONDON WOODTURNERS GROUP

Secretary: Robert Craig, 55 Woodside Park Rd, Finchley, London. N12 8RX **Telephone:** 0181-446 0679
Meetings: Third Thursday of each month **Venue:** Varies - please write for details

SCOTSWOOD

Secretary: George W Hunter, 3 Dundas Avenue, North Berwick, East Lothian, EH38 4PS **Telephone:** 01620 892293
Meetings: Varies - Please telephone for details

SOUTH CHESHIRE & STAFFS

Secretary: Barbara Fishburn, 12 St Leonard's Avenue, Ipstones, Stoke-on-Trent, Staffs. ST10 2 QD
Meetings: Second Thursday of each month **Venue:** Senior Citizens Centre, Hanover Street, Newcastle-U-Lyme

SUFFOLK ESSEX CAMBRIDGE BORDERS

Secretary: M J Marsh, 21 Stour Gardens, Great Cornard, Sudbury, Suffolk. CO10 0JN **Telephone:** 01787 371842
Meetings: Second Tuesday of each month **Venue:** Peter Childs, The Old Hyde, Little Yeldham, Halstead Essex

SUFFOLK MID-COASTAL

Secretary: Jeff Moss, 29 Barton Road, Woodbridge, Suffolk. IP12 1JQ **Telephone:** 01394 383569
Meetings: First Thursday of each month **Venue:** Village Hall, Marlesford, Suffolk.

THAMESIDE WOODTURNERS ASSOCIATION

Secretary: Alec Owen, 27 Leigh Road, Leigh-on-Sea, Essex. SS9 1JP **Telephone:** 01702 73137 (Day) 01702 74757 (Eve's)
Meetings: Second Wednesday of each month **Venue:** Ridley Studios, 27 Leigh Road, Leigh-on-Sea, Essex

THE VILLAGE WOODTURNERS

Secretary: Robin Buckley, 130 Garton End Road, Peterborough, PE1 4EZ **Telephone:** 01733 347296
Meetings: **Venue:**

WEST CUMBRIA

Secretary: Geoff Robinson 2 Countess Road, Bransty, Whitehaven, Cumbria. CA28 6BS **Telephone:** 01946691803
Meetings: **Venue:**

WEST MIDLANDS

Secretary: Graham Lovett, 66 Beachcroft Road, Wall Heath, Kings Winford, West Midlands. DY6 OHX
Telephone: 01384 277398 **Meetings:** Every 6 weeks. **Venue:** Church Hall, New Road, Waterorton, West Midlands

WORCESTERSHIRE WOODTURNERS

Secretary: Walt Jarvis, 8 The Furrows, Stoke Heath, Bromsgrove, Worcestershire. B06 3QX **Telephone:** 0527 876632
Meetings: Please contact the Secretary **Venue:** Droitwich High School, Ombersley Road, Droitwich, Worcestershire

News from the Branches

Welcome - Two more affiliated branches

West Cumbria

The secretary is Geoff Robinson,
2 Countess Road, Bransty, Whitehaven,
Cumbria. CA28 6BS Tel: 01946
691803,

The Village Woodturners

whose Secretary is Robin Buckley, 130
Garton End Road, Peterborough, PE1
4EZ

Anyone living in the areas are
welcome to join either branch

Hi everyone,

If there is a branch with a deserving
member who would like to take
advantage of the "loan-a-lathe" for a
year would they please let me know
before the A.G.M. on March 3rd.

The Mid-Staffs, West Midlands, and
South Cheshire branches are holding
a joint exhibition at Brownhills
Community School, Walsall, West
Midlands on March 29th at 7:30 p.m.
A bar and refreshments will be
available, with woodturning
demonstrations etc. A good demon-
stration of co-operation between
branches. Any A.W.G.B. members in
the locality who would like to exhibit
their work at this venue please give
me a ring on 01889 570373.

A new branch is currently being
formed based in Ashbourne. Contact
E. Judge on 01335 343933.

Overhead mirrors: Following our
Warwick seminar at which we used
video cameras and television
equipment so successfully it was
decided to continue this practice at
future events. Consequently it was
decided to offer branches the
overhead mirrors when they become
available, if any branch is interested
please contact me,

Keep doing a good turn,

Ken. J. Allen



We now meet at
Keynsham Baptist
Church Hall,
High Street,
Keynsham
Bristol.

We have had to
change venue to
accommodate an increase in interest.

The Secretary Chris Lindup has a new
telephone number - it is now 01179
325477.

Chris Stott demonstrated for a day
and went through a wide repertoire
of his work. We even had the
opportunity to see the three-legged
vessel that featured in the February
edition of Woodturning. Twenty
members had a very interesting and
useful day.

November - Peter Smith from
Bolloms came to talk about Briwax
and other products. He was
accompanied by Fred Wood with his
Turnstyler lathe. Between them they
gave a talk and demonstration about
finishes supplied by Bolloms.

December - A super woodturning
quiz was devised by Simon Keen
and as usual it was well received and
a challenge to us all. Simon turned
twenty twig pots, each a different
wood, for the part of the quiz that was
identification of timbers. We were all
very impressed with and grateful for
such generosity of time and effort
from Simon.

January - A "Bring and Buy" sale and
an opportunity to talk to members is
always very popular. Plenty of
negotiating took place and as ever
we found that woodturners need to
be convinced to part with their
money!

Programme for 1996/97 - The
programme for the coming year
includes a visit from the Craft
Supplies Roadshow, a visit from
Axminster Power Tools hopefully and
Rustins are coming to give us a
demonstration on finishing.

In addition several members will
provide demonstrations on home-

made aids and devices, hardening
and tempering, chairmaking and
thread cutting. We will also have an
evening looking at the slides and
discussing the work in the "Instant
Gallery" at the International Seminar
at Warwick last summer.



East Surrey Woodturners

The East Surrey Woodturners had
a good and progressive year during
1985. We had visits from several
known members ie George White,
Mike Cripps, Greg Moreton and
Dudley Polkhard, each of whom
willingly displayed their skills and
were eager to give away a few useful
tips. Apart from our own activities we
had visits from Jim Storrer and Brian
Lane who demonstrated in different
ways the usefulness of chainsaws
insisting on safety precautions. We
would like to thank these people for
their support.

During the year we took part in
several craft activities which have
previously been reported. Our final
activity was in the early part of
December when E.S.W. were invited
to assist with craft items for sale on
behalf of Croydon Association for
People with Disabilities. C.A.P.D. It
was reported that the association
took half of their proceeds from work
contributed by E.S.W. We look
forward to another full and active
year.

At present our membership totals
twenty five and judging from the
enquiries that have been made we
should grow during 1996. We have
a variety of activities planned. which
we hope will promote woodturning.
We have planned to hold two
competitions for members during the
year this with the view that if
successful can become more
frequent during 1997.

We would like to wish all Association
members a happy new year. Keep
making the shavings.



During the past three months, I have undertaken a detailed Club Survey of all the members of the Worcestershire Woodturners Club. This covered a wide range of topics with the objective of obtaining membership statistics and discovering member's thoughts, wishes, likes and dislikes. I was encouraged in obtaining a 86% response from the 44 members at that time. Included in this survey are some results which will be of interest to you, as all our members are AWGB. At Club level we have monthly projects where members show the results of their efforts and discuss methods, problems etc., on a topic set well in advance. Although 100% of members are in favour of this item, only 52% claim to be regular contributors and an additional 40% occasional participants. In fact, for most subjects the reality is that less members take part. Our Committee is now actively pursuing this problem, as we believe that personal confidence must be built up at club level. At local level the club has taken an active part in the County's Crafts Exhibition and also hold Club Exhibitions, with sales, at the Droitwich Heritage Centre. In these events we rely upon around 50% of our members who show a very keen and active interest, with another 25% who sometimes will provide work to support the club. For National Competitions only 29% of members claimed an interest, but a further 24% thought that they may gain sufficient confidence in the future, if encouraged by the more experienced members. With this question we also had a clear negative response, with 47% of members replying that they had no wish to enter National events.

Suffolk mid coastal woodturners

What a year 1995 proved to be. Our branch can be proud of a particularly busy and industrious year. Chris Stott, John Hunnux and Keith Rowley came to see us, each presenting a Demonstration Day and

Workshop Teaching days. These events were well attended by over a 100 members/guests with 24 members attending the workshop days.

Johannes Reiber came along to see us. (he had been to Warwick) He entertained us to a wonderful demonstration day attended by 30 members/guests.

In addition to these events our branch meetings were held monthly. Our TURNABOUT programme worked well with our Presenter making it all so successful. TURNABOUT has proved to be worthy of continuing this year. We have varied the programme topics and recruited new Presenters.

Membership has increased to 42 - the highest since the branch formed some 3 years ago. Our December meeting had to be cancelled due to some early seasonal snow. Tony Witham was due to demonstrate and then give us an update on the AWGB - sorry Tony we will try again.

We said "Cherio" to Arthur Baker, a founder member and past Secretary. Arthur left our rural pastures to live in Stockport. We send our best wishes to you Arthur and to Nan - come and see us soon.

Our Branch Chairman, Albert Lain, was a Warwick demonstrator. Congratulations Albert. We are proud of you as an Ambassador of our Branch. We are fortunate in having you as our Chairman and thank you for all that you do. The branch AGM was held on the 4th January. 30 members attended. The committee agreed to continue for a further year and were duly elected along with one additional member.

And so we progress into 1996. We look forward to visits from Gary Rance and John Tuck who will each present demonstration days and workshop teaching days.

We have planned outings to Wembley, local visits plus NEC etc. We have added another lathe and bandsaw to our equipment list.

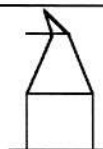
Sleepy Suffolk! - not for 42 for of us.



On November 25th we held our Annual Competition evening at Porthill Cricket Club. The competition was sponsored by Chris Powell who is the owner of Kraft Kabin in Stoke. The competition was judged by Ken Allen from the Mid-Staffs Club, Ken is also the AWGB branch co-ordinator. Ken remarked on the high standard of entries and their number. About thirty members and wives had a most enjoyable evening.

SUBSCRIPTION REDUCED!

The AGM was held on January 11th at the Club room and was notable for several reasons. Graham Lovatt from the West Midlands Club came to be with us and for many members it was a golden opportunity to ask questions directly to the 'AWGB', and quite a few were put to him. Alan Hewitt who has been Treasurer for the last three years was standing down and it is thanks to his careful housekeeping that the balance in our account is so healthy. The meeting considered a proposal from the Committee that subscriptions for 1996 should be reduced. Agreement was quickly reached, proposed and seconded that the reduction should be £2 per member, from £24 to £22.



Kent Branch

Visit to the Workshop of Viv and Shirley Collins, Oxford.

Over the past years a few members of the Kent Branch of the AWGB have visited various turners for a two day workshop, which have included Tobias Kaye and Dave Register. Last year nine of us arrived at Viv and Shirley Collins Workshop on Saturday 11th. November for two days of Green wood turning instruction and hands on. We were welcomed by Viv and Shirley with tea and coffee after spending a comfortable night in a local pub/hotel.

After a brief introduction to the workshop Viv stressed that turning green wood presented no special problems with the benefit that there was no dust, just a lot of very wet shavings. He then explained the grain structure of wood, in a way that all could understand and how the development of a tree was affected by prevailing winds and ground contour, both of which affected the growth pattern. This enables decisions to be made on where to cut, preferably before felling starts, in order to get the maximum number of usable and interesting pieces.

An example of a green ash log was the subject for achieving the best suitable bowl blank, Viv explained how the ring pattern developed and how the core is by no means in the centre of the log. Viv then continued with the way wood dries and how to regulate the rate of drying to minimise cracking; spalting and the development of fungi growth were explained in detail, with suggestions on how to promote these or prevent the process going too far. This was a convenient time to retire to a local Inn for lunch and refreshments.

Where the morning session was mainly about the technical properties of wood which one does not always give serious thought to, Viv then continued with the practical procedures to follow from mounting, Abrasives, Lubricants, Sanding, Finishing and drying. Viv normally uses Wet and Dry Abrasive's plus water as the lubricant.

Finish was discussed in depth and the various oils that can be used before we came to the high technology of drying. The method used was to put the finished bowl in a sealed plastic bag to create a micro-environment to release the tension in the bowl, after a couple of days the bag needs to have a small hole made to allow a small amount of moisture to be released, in following days the hole to be gradually made larger until drying is complete, anything from 2/4 weeks depending on the size/thickness of the bowl.

Viv then cut a bowl blank from the ash log and giving us a Chain saw demonstration at the same time, the

blank was then put into a plastic bag to try and prevent shakes developing until it was required. This finished our first day where we all learnt more than we expected, Viv and Shirley joined us later in the evening for a drink and an excellent meal in our hotel.

The second day started with a rough cut blank cut the previous afternoon being mounted on Viv's Poolewood PW28-40, Viv started turning at 250 rpm using a 3/8 bowl gouge to obtain the desired profile, this resulted in a bowl of 6 inch diameter.

Chucking and reverse chucking was then discussed before Viv finished tooling the outside of the bowl, the members then continued with the next process of sanding using the Wet and Dry abrasives and plenty of water to lubricate the surface and to avoid a build-up of slurry on the paper. The use of water also prevented any heat build-up and if course, the production of dust. To finish the outside of the bowl a fairly heavy coat of oil was applied using kitchen paper, after a short interval another coat of oil was applied before the surface was buffed using a soft cloth pad.

The part finished bowl was removed and re-mounted on a compression chuck and we all took a turn at hollowing, sanding and oiling to completion. The finished bowl was then put into a plastic bag for drying as previously explained.

After another good lunch a second blank was then sawn roughly to shape and all took a turn at producing another bowl to completion, Shirley continued to keep us lubricated with tea and coffee as she had done throughout the two days.

We finished the day with a demonstration by Viv who produced a few items using the oval skew chisel. After thanks to Viv and Shirley for such an excellent two days which was greatly enjoyed by everyone we left and headed back to Kent. Thanks also to Chris Wilson, Gunnar Bjork, Don Cross and Stan Ludlow who each provided a write-up on the different sessions.



Middlesex Woodturners Association

Middlesex have completed yet another very successful year and it is hoped that 1996 will be better still. A full programme of events has been organised and includes demonstrations from well known professional woodturners and branch members.

January - Mike Morley gave a demonstration on tall lidded decorative pots. In February we have our Annual General Meeting

Other events include :-

March 14th - Bob French with an emphasis on good form and design. April 11th - Greg Moreton who will be turning fruit.

May 9th - Ray Key will be demonstrating his expertise with the lathe.

June 13th - A critique of members work

July 11th - Bill Jones will be demonstrating in his usual style of professionalism and wit. Later in the year we also have demonstrations by Kieth Rowley and Chris Stott

AWGB members from other branches are welcome to any of our meeting at a modest cost.

Suffolk, Essex, & Cambridge Borders

A full programme of events for 1996 including:-

March 12th - A critique evening

April 9th - Mike Marsh on The Skew Chisel and Peter Nichols on Australian Woods.

April 13th - Bill Jones. Ticket only event.

May 14th - Visit to Colchester Abrasives

June 11th - Tom Pockley on Involute turning and Tony Witham on Platters

From 'Down Under'

Mike Marlow comments

A couple of years ago I wrote about the relevance of Lichfield's favourite son, Dr Samuel Johnson, to woodturning. He would not approve of my writing this epistle, one of his best known remonstrance's being "No man but a blockhead ever wrote except for money". But no matter, Johnson is dead.

From March 1750 to March 1752 Johnson produced twice weekly the *Rambler*. And this piece of mine is related, being a brief ramble through some aspects of turning associated with The AWGB.

I note from the November 95 *REVOLUTIONS* that the AWGB has problems. It has difficulty attracting fresh blood to committee, and its subscription income is £16,000. against expenses of £20,000. No doubt if the hundreds of hours freely given by committee members were paid for the imbalance would be many times greater.

The Australian situation could be of interest. Local woodturning clubs started earlier there with memberships of 200 to 600 being commonplace. There has never been a national body. No-one seems to want one, knows what it would do, wants to pay for it or man it. I am not suggesting that the AWGB is redundant, merely mentioning that its role needs continual assessment. I have no doubt that this is happening.

An interesting phenomenon is the urge to increase membership. There are economies of scale, but workloads and expenses increase too. In Australia at least one club has considered modifying its focus to that of solely serving its membership. If that club's membership stabilises or contracts, but becomes more cohesive, co-operating and competent, is that a bad thing? However big clubs can work - there is one of Japanese tea makers with 1,600,000 members.

REVOLUTIONS is a handsome publication. Perhaps too handsome for

its contents. The desperate but largely unsuccessful pleas from Mike Dennis suggest that *REVOLUTIONS* cannot flower into something akin to its American counterpart, a journal which easily outdoes the commercial magazines in the quality of its content.

Page 11 of the November 95 *REVOLUTIONS* mentions Hugh O'Neill's paper on qualifications and training. A few readers may recall an article and some subsequent correspondence on the subject in *Woodworker*. In the article I rejected the belief that different methods suit different turners, instead proposing that for each turning situation there is one, or perhaps more than one, best method. Therefore at any one time all turning teachers should be teaching the same methods. You can no doubt foresee the problems:

1. How are the best methods to be decided?
2. Are turning teachers ready to put their students before their pride and change the methods they teach to the best methods known at that time?
3. Are manufacturers willing to modify their equipment to suit the best methods?

I suggest that the fundamental nature of these problems will ensure that my proposal remains buried in the too-hard basket. But there is just a glimmer of light. Hugh O'Neill mentioned the many problems created by the absence of an academic base. If this academic base includes a theoretical base and the necessity for practice and theory to relate, then help is at hand.

In the Spring 1996 Batsford are publishing in Britain the re-written and re-photographed book *The Practice of Woodturning*. It promoted its methods as the best known and supports its claim with detailed explanation. Being from an 'outside source', UK turners can attempt to tear its methods to shreds, even abuse its author for his presumption. And where better to do it than in *REVOLUTIONS*. But if a reasoned debate is stimulated it could provide a single foundation from which turning techniques can progress.

Alas I must break off. Those damn kangaroos will keep playing with the lathes when they think I can't see them.

Mike Darlow

Bob Chapman

WOODTURNING ACCESSORIES

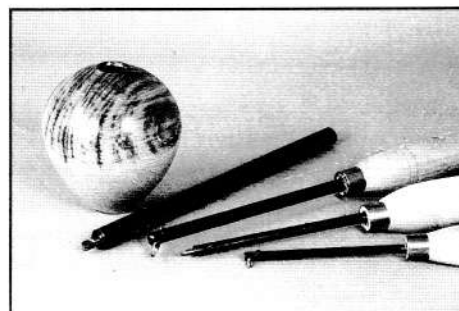
INNOVATIVE TOOLING AND WORK HOLDING PRODUCTS DESIGNED BY A PROFESSIONAL WOODTURNER

Available in four sizes, easy to use, giving even the novice woodturner the opportunity to create intriguing hollow vessels.

Also available:

Dovetailed chuck jaws
Expanding pin jaws
Light pull drivers
Bead forming Tools
and many other useful items

*Hollow Turning Tools with
twin position cutting edge*



FOR FULLY ILLUSTRATED CATALOGUE SEND 9" X 6" SAE TO
B.C.W.A. 93 Parkway, Coxheath, Maidstone, Kent ME17 4Ex Tel: 01622 747325