



Revolutions

Issue No 32

March 1995

Newsletter of The Association of Woodturners of Great Britain



5th. INTERNATIONAL WOODTURNING SEMINAR

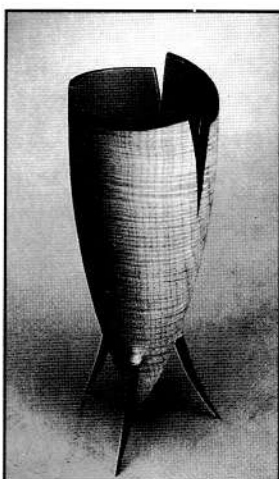
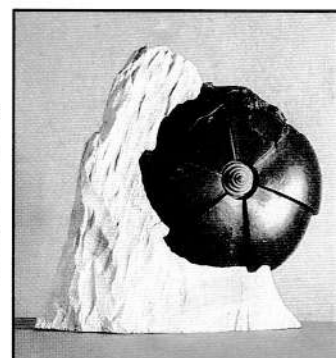
University of Warwick
11th - 13th August 1995

The programme for this year's seminar will have 42 lathe demonstrations, including several speciality presentations which have still to be finalised, chain saw demonstration with Simon Keen and photography clinics with Tony Boase.

Your presenters (as listed below) for this Seminar have been chosen to provide a varied programme with something of interest to everyone. Each one has a speciality of his own and it is hoped that there will be something to be learnt from each of them.

PAUL CLARE (WALES) - His second appearance at an AWGB Seminar.

Paul is comparatively new to woodturning, but has won worldwide recognition for his innovative and distinct designs. He enjoys experimenting with design and is continually evolving new processes and methods. He says that he draws inspiration from tribal vessels, ancient pots, organic shapes and from the every day objects that surround us. Paul uses many techniques such as carving, cutting, pickling, burning and colouring to enhance the texture and beauty of his work. Paul will be demonstrating many of these and other processes and is certain to stimulate ideas for your own work.



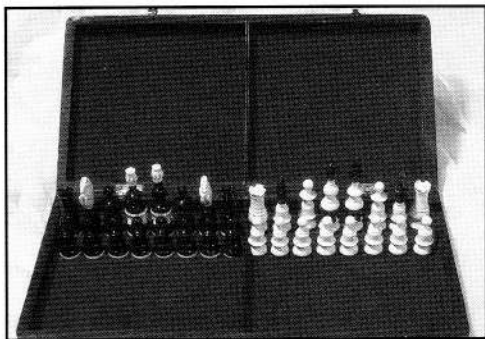
MICHAEL HOSALUK (CANADA) - First visit to an AWGB Seminar.

Michael is internationally recognised as one of the world's most creative woodturners. His work covers a wide range of objects and materials ranging from functional vessels and furniture through to entirely sculptural pieces. He is constantly challenging the limits of interpretation in the field of woodturning and although he retains close ties with the traditional, he frequently breaks free of those ties to explore new directions and as a result, his work displays a wealth of exciting ideas. Whilst Michael is best known for his carved and decorated vessels, he is also a production turner and will be demonstrating both aspects of his work.

JOHN JORDAN (U.S.A.) - First visit to an AWGB Seminar as a demonstrator.

John will be known to many of you for his videos on bowl and hollow turning. The pieces he makes are that distinctive one-of-a-kind, simple but finely detailed vessels, whose very simplicity disguise the craftsmanship and thought which has gone into their making and design. John says "manipulating the colour and patterns in a piece of wood to complement the form, and the texturing and carving to create visual and tactile contrasts are important parts of the process and the result. What I feel is the most important is the intangible quality that a piece is 'Right' that comes with putting emotion and feeling into the work".



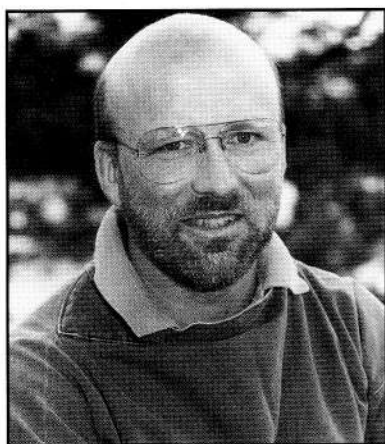
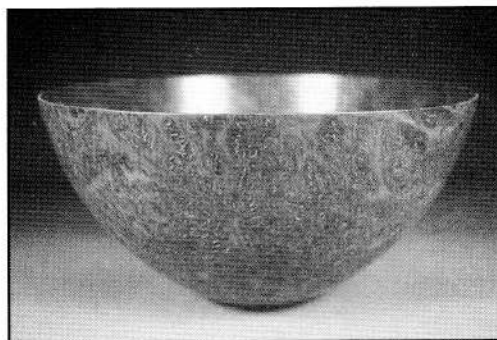


BILL JONES (ENGLAND) - Second visit to an AWGB Seminar.

Back by popular demand after his huge success at the 1993 Seminar, Bill is the last of a line of woodturners going back nearly 200 years and has himself been turning professionally for nearly 60 years. He has an extensive knowledge of standard and ornamental turning techniques, many of which are now almost unknown. His regular articles in Woodturning tell you what a wealth of knowledge he has. With his modest unassuming approach and his dry sense of humour, Bill makes the ideal presenter.

BERT MARSH (ENGLAND) - First appearance as a demonstrator at an AWGB Seminar

Bert has spent his life working with wood and no one has a better understanding of its ways, and it is this understanding and his love of wood which influences all his work. His work is characterised by his fine turned, individual thin and delicate bowls, vases, and dishes from a variety of timbers which are enhanced by meticulous finishing. Bert pays particular attention to the selection of the wood, looking for natural defects, discolouration and grain malformations which can be enhanced to reveal the true beauty. He places a lot of importance to the form of a piece and devotes much time to its development. Bert will be demonstrating his methods with all his usual skill, patience and good humour.

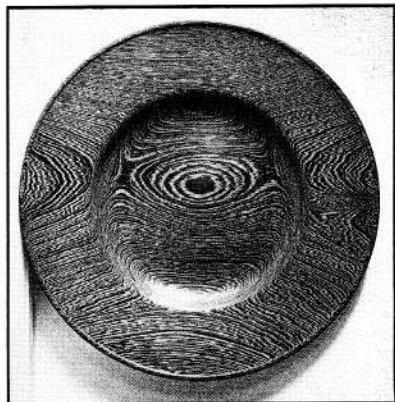
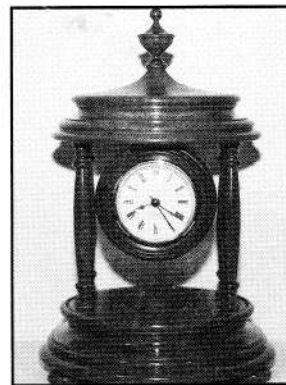


RICHARD RAFFAN (AUSTRALIA) - First appearance at an AWGB Seminar.

Richard has long been widely regarded as one of the world's supreme all round woodturners and is universally recognised as one of the 'masters' in the world of woodturning. He is well known for his books and videos. He has been a professional woodturner for more than 20 years making a range of domestic bowls, boxes, scoops and platters as well as a large range of beautifully proportioned bowls. Richard will be demonstrating all aspects of turning wood.

GARY RANCE (ENGLAND) - First appearance as a demonstrator at an AWGB Seminar.

Gary is the youngest of our demonstrators for this seminar and although he has been seen frequently at the national woodworking shows, this will be his first appearance at a major woodturning seminar. He is one of those rare beings, an apprentice trained woodturner, he is also a top class spindle turner. He says he will turn anything from a lace bobbin to a snooker table leg.



JOHANNES REIBER (NORWAY) - Second appearance at an AWGB Seminar.

Johannes first demonstrated at the 1991 Seminar, where he was a great success. He is one of the most versatile turners in the world equally at home producing architectural or gallery pieces. He is also just about one of the most enthusiastic presenters ever. He has a wealth of experience and information and a passionate commitment to passing it on and where this can't be done verbally, he communicates by doing.

KEITH ROWLEY (ENGLAND) - First appearance at an AWGB Seminar.

Keith is probably best known for his book on woodturning which was first published in 1990 and is widely regarded as the best book for beginners. He has been a professional woodturner for 12 years concentrating on medium to heavy duty architectural turnings and furniture components. Keith has been a regular demonstrator at major woodworking shows and has also appeared at several branches.

General Information

About the University

The University of Warwick Conference Park, Gibbet Hill Road, Coventry, Warwickshire, CV4 7AL, England, is situated 3 miles South West of Coventry City Centre and on the South side of the A45 road. (Map will be sent with final details).

The University is set in a 500 acre parkland campus with banks, variety of shops, travel agent, hairdresser and Arts Centre, caters for the many needs of students and visitors. Excellent campus sports facilities include swimming, Tennis and Squash, while a series of directed walks invite more detailed exploration of the parkland itself.

Access by Rail/Air

The London Euston/Coventry Intercity service is approximately half-hourly throughout the day, with a journey time of 70 minutes. Taxis are available at Coventry station.

Birmingham International Airport is 12 miles North West of the University and there is a direct train service from the airport to Coventry.

A direct and regular coach service links Heathrow and Gatwick Airports, with Coventry.

Outline Programme

Friday August 11th.	10.00-1400 hrs.	Arrival, registration, lunch.
	14.30-22.00 hrs.	Demonstrations, slide presentations and lectures.
Saturday August 12th.	08.00 hrs.	Breakfast
	09.00-22.00 hrs.	Demonstrations, slide presentations and lectures
Sunday August 13th.	08.00 hrs.	Breakfast
	09.00-17.00 hrs.	Demonstrations, slide presentations and lectures

Accommodation

- The standard accommodation for this seminar will be a single room.
- There will be a limited number of double rooms available and some single and double rooms with en-suite facilities
- All rooms are equipped with bedlinen, washbasin, soap and towels, electric shaving point and a daily supply of tea and coffee.
- Each floor has kitchen facilities, toilets, showers and bathrooms.

MEALS

Meals included in the full fees are lunch and dinner on Friday; breakfast, lunch and dinner on Saturday; breakfast, lunch and tea on Sunday. Bar facilities will be available. Please advise of any dietary requirements.

Fees

The Seminar fees inclusive of all meals and accommodation are as follows:

- Standard single room £175.00 per person
- Standard double room £175.00 per person
- En-suite single room £215.00 per person
- En-suite double room £215.00 per person

On this occasion we are happy to be able to offer accommodation on a bed, breakfast and evening meal basis to non-participating spouses and friends wishing to accompany seminar delegates.

- Non participating delegates standard room £80.00 per person
- Non participating delegates en-suite room £120.00 per person

The non-residential fee for seminar delegates inclusive of all meals except breakfast is £150.00 per person.

A non-returnable deposit of £50.00 per person is required with the balance to be paid in full by 30 th June 1995. After this date places not fully paid will be made available to the waiting list.

Cheques should be made payable to AWGB.

Refunds can only be made to those who cancel before 30th June 1995.

Refunds will be subject to an administration charge of £10.00.

Only in exceptional circumstances will refunds be made after the above date.

Applications will be acknowledged by return of post.

Tickets, detailed programme, delegate lists, etc. will be provided on registration at University of Warwick on Friday 11th. August 1995.

Beyond the Park

If you are accompanied by your spouse and they do not wish to see the demonstions there are a number of tourist attractions in the area

- COVENTRY - A modern city with a rich heritage, striking contemporary Cathedral and medieval Guildhouse.
- KENILWORTH - Romantic ruined castle, once the house of Queen Elizabeth 1's favourite, the Earl of Leicester, 3 miles from the University.
- WARWICK - One of England's most charming shire towns, built round the country's finest medieval castle which boasts staterooms, Old Masters, falconry displays and Madame Tussards imaginative reconstruction of an Edwardian house party: 20 mins from the University.
- STRATFORD-UPON-AVON - A premier tourist attraction with its Shakespearian connections and the Royal Shakespear Company's three theatres.

Don't be dissapointed send for your ticket(s) now

They are being sold very quickly

How?

**Send the application form from the centre pages of this edition
of Revolutions**

PLEASE NOTE

AWGB members have priority booking until 31 st. March 1995, after this date any unsold places will be made available to the general public at £250.00 each.

Editorial

The first thing you will notice about this edition is the change of style. This has been done to try and reduce the number of pages by using a different typeface, utilising more of the page and getting rid of the headings. I have to apologise for missing out some of the authors names on articles in the last edition of *Revolutions*. I am sure most of you would have guessed that the golden haired youth mentioned in the Love Goblet article was the one and only Len Grantham. The article on the NEC Show was by Graham Lovett.

I make no apology for this edition being late. Until the 2nd March I had two articles for this edition one of which was left over from the previous edition. I cannot put together a newsletter without material to go into it. I know I keep whinging on this subject but unless I do nothing happens. After my whinging I was swamped with material and as you can see this edition has had to go into 32 pages. The centre pages have been deliberately arranged so that you can pull them out for the AGM and to send off the relevant application forms. Including them in as part of the publication automates the collation process and hence keeps the costs down. You can, of course, photocopy these pages if you wish.

Mike Dennis

SEMINAR APPEAL

This is your chance to nominate an AWGB member who may not have the funds to attend the 1995 AWGB International Seminar, but would dearly love to do so. The AWGB is offering one FREE PLACE this year to a needy person. We would like members to write letters of nomination and give reasons why the nominee should be considered for the place.

It is most likely that all the nominations will go into a draw unless there is one very outstanding candidate.

If the nominee chosen is under sixteen years of age, we shall have to ask that a paying delegate accompanies this person.

The name of the recipient will not be revealed by the AWGB, this is to avoid any form of embarrassment to that individual. If the person concerned wishes to be identified, that will be up to them.

We expect this offer to grow in the years to come, as all funds raised at the Auction held at each Seminar will go into a fund for this sole purpose.

Nominations should be sent to:

Ray Key (Chairman, Seminar Sub-Committee)
53 Weston Rd, Bretforton, Nr Evesham, Worcs. WR11 5HW

X

To all Members

Please check that you have paid your 1995 subscription
MANY HAVE YET TO DO SO

If you have yet to pay please do not delay any longer
This will be your last copy of 'Revolutions' sent to you unless
you renew your membership by April 15th 1995

DONT DELAY PAY OUR TREASURER TODAY

Len Grantham
Spindles, Cooper Close, Poplar Firs,
Nettleham, Lincolnshire, LK2 2XX

Make all cheques etc, payable to AWGB



The Chairmans Page

These first notes of the new year represent much that is positive about the AWGB, but the odd negative is also to be found. By the time you receive this issue of 'Revolutions' the AGM will be only be a couple of weeks away, it hardly feels credible that another twelve months will have passed by. Much has gone on in the last year, most of it positive, the adoption of the new constitution at last years AGM has seen us putting the requirements of this into place (ie, the election of Branch representatives etc), now the dust has settled we have been able to look outward again instead of inward.

Our four Branch Committee representatives (elected in September) have all been busy following up on new initiatives instigated by the committee, they have made contact with all our seventeen 100% AWGB Branches, this contact will be ongoing, normally prior to a committee meeting. The idea being any concerns and thoughts the Branches may have can be presented to the committee.

Contact has also been made with another seventeen non affiliated groups that have AWGB members within them (the contact letter from myself is published in full elsewhere in this newsletter). Our Branch committee members made contact with each one of them later for a chat, all were pleased we had taken the trouble to communicate. Some may in the future become 100% AWGB groups, others certainly will not, this is much as we could have expected, we shall continue to communicate, a copy of 'Revolutions' will be sent to each group so they are aware of what we do.

Interestingly six or seven Non

Affiliated groups have taken up our Insurance offer, they pay the premium plus a commission to the AWGB, the 100% Branches have their Insurance paid for them. The Branch Hand Book seems to have been well received (your Branch Chairman/Sec/Treasurer has this) it has already been updated with some changes. This will be added to soon with a list of those turners willing to take on commissions and those who offer tuition, we will be devising forms for your replies to go out with the next edition of 'Revolutions'. Our Secretary tells us these are two areas he gets constant requests for information on, along with requests for membership forms.

Increasingly the AWGB is being turned to as the organization that matters in the world of woodturning, we have had a high profile at Practical Woodworking Shows (getting higher with the clinic) The Woodworker Show and some others. We are finding we are being invited to take part in more of this type of show, albeit on a smaller scale, we have just turned down two requests which we judged as not for us at this time. We have however committed ourselves to involvement in two major Woodturning/Woodworking events, the competition that The Worshipful Company of Turners organises at Apothecarie's Hall in London in June (Rules and Conditions elsewhere in this Newsletter), this competition is open to all members, not just those who belong to a Branch this time. We have also committed ourselves to a major new event to be held at Rufford Country Park on June 24th 25th, this is a two day Woodworking Fair for Woodturners, Woodcarvers Furniture makers, Toy makers etc, woodturners however will predominate.

This event has given us a chance to

do something for our professional makers producing work of the highest quality, this is what Rufford wants, we have submitted forty six names to them from which they will select twenty five, eight of which will be asked to do a one hour demonstration (in exchange for a reduced stand fee) The AWGB logo will appear on all promotional material and we will certainly have a stand there, we expect we will be able to sell members work (subject to negotiation) If this is the case we would hope to be able to represent more of you than normal, so he prepared for a call to provide work for this show.

Please note Rufford sends all the invitations, does all the organization and PR of this event. The AWSB is acting as an adviser to Rufford, with the responsibility for the organization of its own stand of members work it promises to be quite an event, they did an event last year in conjunction with the Potters Association and it was a great success.

The Seminar plans gather pace, timber and lathe supplies are now assured, bookings so far are good, but many more are required before we break even and your committee breathe's easily again. More presenters (one slot ones) will be added from the delegate list in time. It will be a truly international event once more, delegates have already registered from Germany, Belgium and the USA, we expect more yet to come from overseas. We have instigated a number of new initiatives, a banquet meal on the Saturday night with an auction of work by presenters and others, if there are any members who would like to donate a piece of work to this let me know. The purpose of this auction is to raise funds to provide a place or places for AWGB members who would love to attend the Seminar but do not have the means. We are making one place available this year using funds from previous auctions, (an appeal notice appears else where in this newsletter, if no one case is outstandingly meritorious, then one of the nominated names will be drawn from the hat. Another initiative is that we have made a concession price offer

to previous Seminar main presenters, this is a gesture of goodwill in recognition of their contributions in the past.

All I have said so far has been positive and I don't want to end on a down side but I am a little concerned that we have been short of nominations for the committee. Last year Tony Waddilove your elected Chairman stood down mid term due to business pressure, Chris Cook was unable to take up his position due to ill health. (we wish him well soon). We have co-opted members of course who do a great job, but we are a nomination short for the committee. This place should be taken by a member who is preferably not a member of a Branch to balance the members views, it may be that there is someone willing out there who was not sure who he or she could get to propose and second them. If there is such a person, please get in touch with me. You will see on the AGM notice that yours truly has offered himself for the Chair, Hugh O'Neill as Secretary and Len Grantham as Treasurer, Hugh and Len have been doing these jobs since 1987 and I have had four years in the Chair in the past, we hope in the future others will put their names forward for these posts. Chris Lindup has been nominated as Vice Chairman and I am sure he will do a great job, this means the Branches will have to elect another committee representative, as Chris was a Branch committee representative. If you are a member who still has to renew your subscription this will be

your last copy of 'Revolutions'. We have sent out two reminders to you and there is large notice in this issue giving April 15th as cut off time.

Another slight down has been the lack of response from some quarters to the call for exhibits for the AWGB stands, Eric Ditchfield sent out forty five invites to individuals with only twenty one positive responses and Frank Clarke invited all seventeen Branches to send four items of work each but only seven responded. Perhaps we didn't give you enough notice, I don't know, but we have another two or three shows this year so the offer still stands to those invited. The good thing is we still had a decent display but it could have been so much better, and would have represented more of you. I will finish on a positive note and say this, we have a very hard working and contributing committee on board working for each other and for the whole of the AWGB membership, this has to be good for woodturning, the precis of our last two committee meetings shows the sort of input that goes in. We are convinced that communication is the key to success and to this end our more open style of running this organization will we hope appeal to you. To this end I hope each of the committee will write a short pen portrait on themselves for publication in the next issue of 'Revolutions' this will give you a better idea of who we all are.

Ray Key

AWGB LAPEL BADGES (Brass & Enamel) HOW CAN I OBTAIN ONE?

Send Cheque etc, to:
Frank Clarke
81 Knightwood Crescent
New Malden
Surrey KTS 5SP
COST £2.50 inclusive of post and packing
MAKE ALL PAYMENTS TO AWGB

THE TALE OF THE TURNERS TOOTH FAIRY

A colleague of mine recently had a dental appointment. He was having a new dental plate fitting and had got an appointment for a wax impression.

Anxiously sitting in the waiting room, awaiting the dreaded call of his name, he was thumbing through all the old copies of "Country Life" for anything to do with his favourite hobby of woodturning, no such luck! suddenly the call came.

Mr Mansell! with sinking heart he entered the surgery and sat in the chair, "Open Wide" said the deep commanding voice and a container full of warm waxy substance was thrust into his mouth. Barely managing to conceal his excitement, a thought came into his head **A LOW MELTING POINT WAX!** this would be just the job for sealing the ends of those logs which Mr Mansell had recently cut up. As soon as the wax was hardened and the mould was removed from his mouth he gasped to the dentist "What do you do with your waste wax?" "Oh, we just throw it away" was the reply.

"Will you save it for me to collect every week?" Mr Mansell asked. With a puzzled expression the dentist accepted the offer, happy to rid himself of his waste products so easily, and Mr Mansell had a free supply of low melting point wax to seal the end of his logs. So next time you go to the dentist if you recognise the queue in front as being woodturners you'll know the reason why. Keep doing a good turn.

K.J. Allen

CONGRATULATIONS

These go to Bert Marsh, at last Bert has been selected for the Crafts Councils index, this belatedly puts right one of the biggest injustices to any craftsman or craft, he should have been on it years ago.

A7 LAST!

After living out of suitcases and from packing cases for some nine months our Secretary, Hugh O'Neill is now (almost) settled in. He apologizes for the difficulty people have had in trying to contact him during his "stateless" period, for the lost correspondence, and the late and often vague answers to some enquiries. Only last week were the AWGB files and references unearthed.

Now with an operational office; a (sometimes) glitch free computer; soon, hopefully a fax; a new answer phone (so far returned to manufacturers only four times); but, unfortunately no photocopier; he promises that things will be better. (*We'll believe that when it happens - Ed*).

Contact is still better by letter as there is no phone link to the workshop.

The new workshop came on stream on the 14th February, all the machinery having been in store for almost 12 months. Moving three lathes including the heavy Poolewood and the massive Wadkin more than taxed the removal van. The main log pile still has to be shifted!

Hugh will be running courses of various lengths and levels including both beginner and specialist workshops in turning, upholstery, and duck carving and painting. The centre is a black and white cottage on the Worcestershire borders with magnificent views across Cleve Hill and Shropshire. Part of the delay in getting going has been concerned with listed building consent for the development of a bed and breakfast facility for people attending courses.

To meet the requests for more books and illustrated articles, Hugh has also made facilities in the workshop for photographing projects in progress and equipment under test.

The area in which he now lives has several craft centres offering courses in pottery, needlework and embroidery; so Myttons is linking with some of these to offer husband and wives packages where partners can follow their own different interests.

And this is retirement???

SADNESS

It is with much sorrow we learnt of the death of Cecil Colyer in November at the age of 81, Cecil was one of the AWGB's stalwart supporters from the very beginning. Many members will remember his work on the AWGB stands at woodworking shows and at the Seminars, mostly he showed Mazers with silver rims, (he was an accomplished silver smith as well as turner).

Many will remember him demonstrating his bowl nesting technique's at the 1991 AWGB Loughborough Seminar, he was always willing to share his knowledge and always ready to learn new tricks.

I first met Cecil at Parnham House in 1980 at the International Woodturning Seminar held there, we were both demonstrating, he bowl turning and me boxes. Cecil was distinctive with a large straw hat, and had a perspex guard attached to his bowl to deflect the shavings from his face and eyes.

I met him many times after that at meetings and Seminars, I stayed with him some years ago when he had me invited to be the annual guest speaker to the Dorset Guild of Craftsmen. Cecil was always enthusiastic with something to contribute, he had a wry humour, I once remember him saying to me what are you doing at this meeting, its no good having your enthusiasm here, as it takes years to make things happen with this lot, and you know he was right. The woodturning world is the poorer for Cecil's passing, but he leaves a rich legacy, not just his work but in the memories of those who knew him.

Ray Key

A Week-end in Devon

By Ken Spittlehouse

This article was submitted for the last edition of Revolutions but there was not enough room. I hope that you enjoy reading it now Ed

On Friday, the 9th. September, 1994 eight members of the Kent Branch of the AWGB, found themselves in the delightful Devon village of Sampford Peverell.

The object of the trip was to spend the week-end with Dave Regester, and hopefully, improve our skills by watching a Master Craftsman at work.

The Friday evening was a social event, when with Dave and Christine,

we all met together for a meal in a local hostelry, together with the wives who had accompanied us, so that we could meet our hosts and set the tone for what was to come.

Saturday morning (9.30a.m.) saw us gathered together in Dave's workshop to commence the activities. Having established that his audience were not raw beginners, Dave outlined his proposed programme. This was not rigid and was tailored to take into account the wishes of any of those present and interruptions were welcomed.

The first session was devoted to spindle turning and out of this emerged the way that Dave has ground his skew chisels. I can only liken its shape to that of a scimitar, but what he can do with it is almost beyond belief. In spite of the unconventional shape he had no trouble in producing beads, coves and rings, in addition to the usual functions associated with the skew, namely planing cuts and cleaning up end grain. Then we had a demonstration of box making with again a surprising use of a hacksaw to part off the lid from the body of the rounded blank. This, of course, was done at slow speed and emphasised the value of having a lathe fitted with variable speed control. The shaping of the box lid was illustrated to ensure a good fit, together with completion of the inside, sanding and finishing. This last aspect caused a few raised eyebrows in that Dave does not use sanding sealer or other fancy methods. He uses vegetable oil (Safeway's) and his abrasives are stored in a little of this oil which makes it very effective at controlling the dust normally associated with this activity. As most of his routine work is concerned with items such as salad bowls, platters, scoops etc. this would seem to be a most economical and sensible approach. However the finish is obviously not applicable in all cases, (I do not think it would be appropriate as a finish to my lace-bobbins).

A delicious lunch prepared for us by Christine was then enjoyed and much animated discussion took place whilst

enjoying our refreshment. Then it was back to the workshop for the afternoon period. Those of you who are acquainted with Dave's work, either through his writings or from seeing him demonstrate, will know of his "invention", the Trunion box with its captive rings. I have always found it difficult to conceive how to go about the turning of such an item and Dave agreed to show us the procedure. In what seemed to be a short space of time we were able to handle the finished article. Having seen it produced in front of my eyes I can confirm that it is as difficult to do as I always imagined!!!

During the rest of the afternoon we saw various spindle turned items including candle sticks and scoops.

We met up again on Sunday morning, (having had yet another dinner together on the Saturday evening), and the day was to be devoted to face-plate work. We were given much useful information on the preparation of wood from tree to bowls. Dave went into great detail regarding his preparation of the plank from which the various sizes of bowl blanks were cut on the bandsaw followed by the rough turning of the bowls and their treatment in his dehumidifying chamber. This effectively reduced the moisture content to an acceptable level for the final stages. There was an interesting and useful dissertation on the problems of rechucking the rough turned bowls and we were able to see the various problems in the range of rough turned bowls which were stored in the workshop. Then followed a practical demonstration of the production of a salad bowl. The actual bowl, in Ash, was by my standards enormous, but its making proceeded with smooth efficiency. Most of us were covered in shavings before the morning was out. It is amazing how just watching can lead to shavings finding their way into the most unlikely places (I felt I had to apologise to the owner of the hotel where I was staying for leaving such a lot on the floor of my room and that was after I had done some cleaning up). The bowl was in it's, final stages when we had to adjourn for another of Christine's delightful lunches.

There was, as usual, much cheerful banter over the lunch from which emerged a request to be shown how to prepare a log for turning into a natural edged bowl. This became the agenda for the afternoon and final session after the salad bowl had undergone its final completion, including rechucking and dealing with the recess in the base. Although I, unfortunately, had to miss this part, I am assured that the natural edged bowl in Cherry, was finished with a wall so thin that all present were in a state of considerable apprehension.

By common acclaim the weekend proved to be a huge success. We had first class hospitality from our hosts, Christine and Dave, the instruction proved valuable and advice and tricks of the trade were freely given. These things together with the companionship of friends, sharing a common interest, went to make it a time to remember and savour. However it must be said that there were distractions. At times it was sometimes difficult to concentrate whilst up to sixteen Blue-tits were busying themselves on a nut feeder hanging outside the workshop window. Then there was the occasion when a Robin came screaming down the workshop like a Exocet missile, bringing all activity to a halt whilst Dave effected its release.

I would like to express our thanks to Trevor Dawes for organising the event and also give my personal thanks to Dave Miles who generously let me have copies of his copious notes. These refreshed my memory of the events and permitted me to report chronologically. However, most thanks must go to Dave and Christine who went to great trouble to ensure that our week-end in Devon will long be remembered with great pleasure.

To my mind there is no better way to improve one's skills than to spend time with an undoubted expert in his own environment. One can read books, watch videos or experts demonstrating at shows or exhibitions, but seeing a craftsman working with his own tools in his own workshop is an experience not to be missed.



The Worshipful Company of Turners

PLAIN TURNING COMPETITION THURSDAY 29th JUNE 1995

General Outline of the competition

Once again the Worshipful Company of Turners is sponsoring a major woodturning competition. Working with the AWGB the worshipful company has opened up this competition to all members of the AWGB. There will be two classes: Open - for any member of the Association, with Gold, Silver and Bronze medals of the Worshipful Company and a class for juniors aged 18 years or younger. Here the awards will be Silver, Bronze and a certificate.

The piece of work

There are no size limitations but entrants should bear in mind that the pieces entered will have to be packed for transit to and from London. It is important that the work CLEARLY shows both faceplate and between centre elements. It will not be sufficient to say that because it is large, out of balance bowl, that the tailstock was used to support it

RULES AND CONDITIONS

1. The Competitions will be held at the Apothecaries' Hall, Blackfriars Lane, London EC4, (near Blackfriars Underground and BR Stations).
2. Entries must be delivered by 27th June to :Leabank Coatings Limited, Wycombe Road, Stokenchurch, High Wycombe, Bucks HP14 3RJ. From whence they will be delivered on the 29th to Apothecaries' Hall for show and judging and to which they will be returned after the event for return to their entrants. Entrants must provide self-addressed labels and written instructions for return of their work.
3. The Entry must be a piece of work containing both face plate and between centre elements visible on the submitted article.
4. There will be two classes:
 - a) Open - Competition open to any Member of the A.W.G.B. (apart from the Judges); The prizes will consist of Gold, Silver and Bronze Medals of the Worshipful Company of Turners.
 - b) Junior - 18 years or younger; The prize will consist of Silver and Bronze Medals and a Certificate.
5. Additional Certificates may be given for items of exceptional merit not receiving any of the above awards.
6. Special prizes will be awarded by outside organisations.
7. The Judges' decision will be final and no discussion or correspondence can be entered into regarding the awards.
8. An entry form must be in the hands of the Worshipful Company of Turners by 1 st June 1995.
9. The work submitted must have been carried out by the Entrant

The entry form for this competition is in the centre of this edition of Revolutions which you may photocopy if you wish

PRACTICAL WOODWORKING EXHIBITION WEMBLEY

*By our Exhibition
Organiser Eric Ditchfield*

*Photographs by Dave
Malcolmson*

The 1995 exhibition season as far as the AWGB is concerned opened on the 23rd of February in Hall 1 of the Wembley exhibition centre.

However many months prior to this, the exhibition and its organisational schedule has to be put into operation. Planning what theme to adopt for the stand; how to make the stand different from the previous one; and who to invite to show examples of turning expertise. These and many other similar decisions are taken by a small team on a regular basis.

One of the major points up for discussion was the fact that at the NEC last year, the AWGB held a demonstration clinic for the first time. This was undoubtedly a success, and an activity which the committee wished to pursue further, and

therefore agreed to repeat the clinic again at Wembley.

With the concept agreed, the next activity was to arrange the exhibits and equipment. This is the part of the organisational process which causes the most heartache. Invitation letters, numerous telephone calls, negotiations with suppliers and of course the constant worry that things just "might not turn up!"

However, it all comes together on the build-up day. The exhibits, demonstrations lathes, materials, stand fittings, and above all the dedicated "heavy gang" who somehow seem to "get it together".

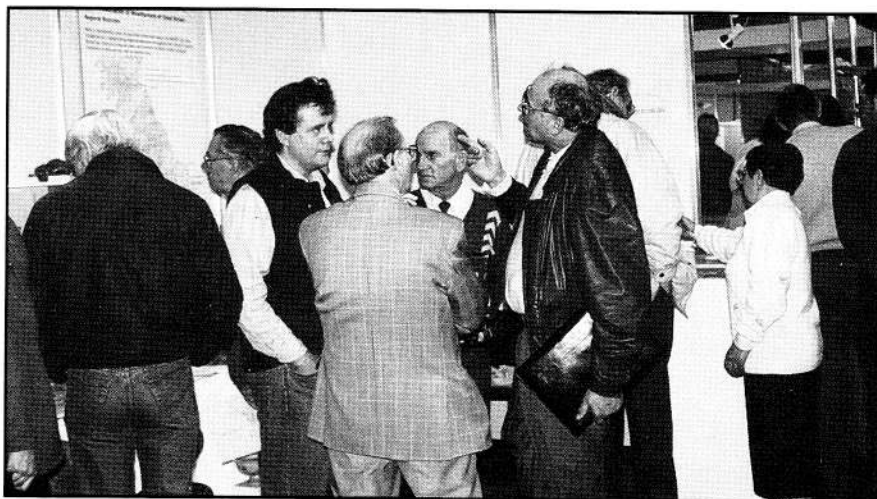
Opening day, and the exhibition hall becomes alive with the drone of machinery being demonstrated; the smell of newly worked wood; and the constant chatter of people as they walk by, discussing new ideas, techniques and equipment. Throughout the four days of the

exhibition, the AWGB stand was a hive of activity. This serves as continual reminder that there are a great number of turners out there. Some are very proficient, some intermediary, and some just on the first rungs of the turning ladder. One of the prime aims of the AWGB is to offer help and assistance to all these persons. Either with a guiding hand, or by an objective analysis of their technique or product.

It was a delight to see so many crafts persons on the stand. Many of those who visit are well known to members of the AWGB and the standmatters. Many visit exhibitions on a regular basis, as well as large numbers from the AWGB branches. But there are a vast majority who just visit the stand to admire the quality and ingenuity of the display exhibits, and to watch the experienced turners at work.

The AWGB is a members association, and as such relies on its membership as an aid to its success. If the quality of work on display, the professionalism of the demonstrators and the interest from the visitors is anything to go by, then I am sure the exhibition was a success and a totally worthwhile experience.

Thanks must go to all those members who supplied exhibits; those who demonstrated at the lathes; and those standmatters who fielded the constant barrage of questions, and also the companies who offered equipment and material support. A big "Thank You" to you all.



There Was This Other Tree (A note on Safety)

Many of us in our eagerness to obtain timber for our craft have become loggers as well as woodturners and no doubt we will remember a former article which describes the story of the huge cedar which was acquired by members of the Middlesex branch.

A chainsaw is a good investment and allows us to use good material which otherwise might be destroyed by the unconverted who do not appreciate its potential. The blanks we prepare are truly a gift from above.

But let's not get carried away. A chainsaw is potentially a lethal instrument, and careful positive handling and the wearing of protective clothing uncomfortable though it may be should never be ignored. I learned this very important lesson, very suddenly in a matter of milliseconds recently. The purpose of this story is an attempt from my own experience to discourage those who dare to disregard safety equipment with the I'll be careful attitude.

We had acquired a sizable cherry tree from a local garden. We topped it and then removed some of the lower branches mainly in order to effect an accurate fall when it came to felling the main trunk. The largest and heaviest of these branches had fallen across a fence dividing our donor's garden from his neighbour's, and we didn't attend to it until after we had felled and cut the main parts of the tree into useful blanks and had taken several excursions to the rubbish dump with the small stuff.

When it came to attending to this sizeable and useful bough lying across the fence, we were inevitably tired. Nevertheless, we were determined to finish and I climbed over the fence and commenced cutting into this last branch, then I remembered that I ought to be wearing my helmet and eyeshield and called for it to be passed over the fence. It arrived (by air mail), and I put it on and made another cut and turned to speak to a member who was stacking timber. Then it happened. I had caused the branch to become unbalanced. We should have lowered the branch from the fence to the ground before commencing the cut. But we were tired, it hadn't crossed our minds, and we didn't. The branch had swung around and hit me on the side of my helmet, which a moment before I had not been wearing. I fell to the floor gouging a hefty chunk out of the left leg of my protective overtrousers with the chainsaw whose speed was rapidly decreasing whilst still in my hand.

The lessons I learned are obvious, I am still alive and unharmed, I still have two good legs. My helmet was broken and my "oregons" are now patched up. But for them there would most certainly have been a serious injury. Perhaps a lesson learned is that whatever precautions are taken it is unwise to do this heavy, dangerous but enjoyable work when we really should have packed up and gone for coffee.

D.G.Grainger. - East Surrey Branch.

Cheerful greetings from New Zealand!



Our President of the NAW Soren Berger, has given me the task of organising our 1996 National Seminar Series. This event will take place in three venues at the end of May/ beginning of June 1996.

This letter is to let you know about the Seminars which may be of interest to woodturners in Britain. We propose having three overseas turners and two locals demonstrating at each venue (two in North Island and one in South Island).

People interested in coming, either as demonstrators or learners making contact with me can be given full details.

Rowland Cooper
Vice President NAW,
Box 219, Waipukurau, New Zealand

FOR SALE

Coronet No 3 lathe
with bowl turning
assembly, 3ft bed,
custom made heavy
duty cam locking tool
rest with adjustable
tool post holder (not to
be confused with the
lighter Ward tooling
model), Craft Supplies
precision chuck with
extra's, plus other
accessories

£595

Tel Dave Malcolmson
01923 820675

ANNUAL GENERAL MEETING of the ASSOCIATION OF WOODTURNERS OF GREAT BRITAIN

Etching Village Hall, Rugeley, Staffs
Sunday 2nd April 1995 at 2pm.

AGENDA

1. The Secretary will read the minutes of the sixth AGM dated 17th April 1994. ✓
2. Adoption of the Chairman's Annual Report ✓
3. Adoption of the Treasurer's Annual Report ✓
4. Report on Branch activities. ✓
5. Vote of thanks to retiring Officers. ✓
6. ✓ Election of Officers and Committee. ✓
7. ✓ Election of Accountants ✓
8. ✓ Close of the Annual General Meeting. ✓

Treasurers Report and Statement of Accounts:

In line with the proposals of the Fifth AGM, a copy of the main detail from the Annual Financial Report is circulated with this Agenda.

ELECTION OF OFFICERS 1995-6

Only one nomination has been received; this proposes Chris Lindup for the position of Vice Chairman.

The following are therefore standing for election:

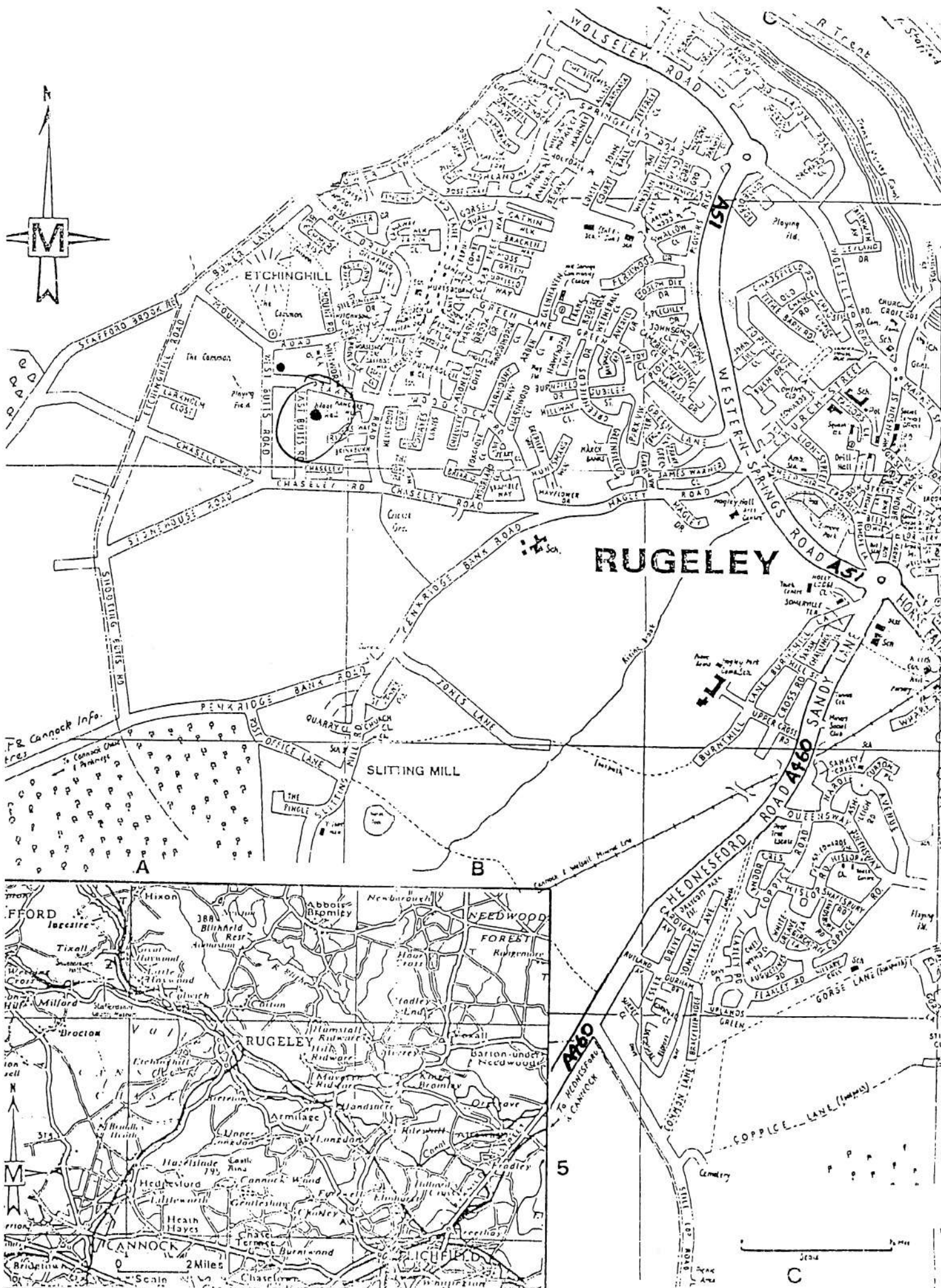
Ray Key	Chairman
Chris Lindup	Vice Chairman
Hugh O'Neill	Secretary
Len Grantham	Treasurer
Ken Allen	Member and Branch Organiser
An other	to be co-opted

Co-opted members

Mike Dennis	-	Editor Revolutions
Eric Ditchfield	-	Exhibitions Organiser
Frank Clarke	-	Assistant Exhibitions Organiser

The following are the Branch Representative Members elected by Branches:

Tony Witham	George Hunter
Graham Lovett	AN other



THE ASSOCIATION OF WOODTURNERS OF GREAT BRITAIN

BALANCE SHEET AS AT 31 DECEMBER 1994				
	Notes	31/12/94	31/12/93	
FIXED ASSETS				
Tangible Assets	4	8005		7055
CURRENT ASSETS				
Prepaid Expenditure			0	
Loan to Norfolk Woodturners Association		906	200	
Cash at Bank	5	12028	15939	
Cash Floats	6	2050	2250	
Cash in Hand		36	115	
		<u>15220</u>	<u>18504</u>	
CREDITORS				
Amounts falling due within one year				
Membership Subscriptions in Advance		127	146	
Accrued Charges		2193	2633	
Corporation Tax	7	0	77	
		<u>2320</u>	<u>2856</u>	
NET CURRENT ASSETS		12900		15648
NET ASSETS		20905		22703
Represented by:-				
ACCUMULATED FUNDS	8	20905		22703

The attached Notes form an integral part of these Financial Statements

INCOME AND EXPENDITURE ACCOUNT YEAR ENDED 31 DECEMBER 1994			
	Notes	31/12/94	31/12/93
SEMINAR			
Income		0	28131
Expenditure		<u>0</u>	<u>25667</u>
			2464
VIDEO HIRE			
Income Less Refunds		85	85
SALE OF GOODS			
Sale Proceeds		1558	2717
Cost of Sales		<u>1526</u>	<u>99</u>
			32
OTHER INCOME			2618
Membership Subscriptions	2	16606	19371
Interest Receivable (Net)	3	390	1121
		<u>16996</u>	<u>20492</u>
		<u>17113</u>	<u>25659</u>
DONATIONS			
Specific		824	2500
		<u>16289</u>	<u>23159</u>
ADMINISTRATIVE AND GENERAL EXPENSES			
Exhibition Expenses		1985	3043
Newsletter		5435	9866
Grants to Branches		1320	1680
Postages		965	952
Telephone		204	536
Insurances		1605	0
Printing and Stationery		794	1248
Photocopying		493	732
Bank Charges		144	121
Accountancy Fees		540	659
Equipment Renewals and Maintenance		288	0
Working Party Expenses		0	1221
Travelling and Subsistence		2425	3001
Meeting Expenses and Sundries		<u>428</u>	<u>543</u>
		<u>16626</u>	<u>23602</u>
		<u>(337)</u>	<u>(443)</u>
DEPRECIATION			
Charge for Year		1516	1554
(DEFICIT) OF INCOME OVER EXPENDITURE		(1853)	(1997)
TAXATION			
Over Provision in previous years		(55)	0
BALANCE TO ACCUMULATED FUND	8	(1798)	(1997)

THE ASSOCIATION OF WOODTURNERS OF GREAT BRITAIN

NOTES TO THE FINANCIAL STATEMENTS (Cont'd)

CASH FLOW STATEMENT YEAR ENDED 31 DECEMBER 1994		31/12/94	31/12/93
NET CASH OUTFLOW FROM OPERATING ACTIVITIES			
(Deficit) of Income over Expenditure before Taxation	(1853)	(1776)	
Depreciation Charges	1516	1554	
(Increase) Decrease in Debtors	(906)	223	
(Decrease) in Creditors	(459)	(6676)	
	(1702)	(6675)	
TAXATION			
Corporation Tax Paid	(22)	(66)	
INVESTING ACTIVITIES			
Payments to acquire Fixed Assets	(2466)	(5215)	
FINANCING ACTIVITIES			
Encashment of Savings Bonds	0	2644	
(DECREASE) IN CASH AND CASH EQUIVALENTS	(4190)	(9312)	
CHANGES IN CASH AND CASH EQUIVALENTS DURING THE YEAR			
Balance brought forward	18304	27616	
Balance carried forward	14114	18304	
NET CASH (OUTFLOW)	(4190)	(9312)	

NOTES TO THE FINANCIAL STATEMENTS YEAR ENDED 31 DECEMBER 1994

1. ACCOUNTING POLICIES

- The Financial Statements are prepared under the historical cost convention.
- Tangible Fixed Assets are shown at cost less accumulated depreciation. Depreciation is provided on Tangible Fixed Assets at rates calculated to write off the cost of each asset over its expected useful life at the following Annual Rates:-
 - General Equipment 15% on reducing balance
 - Computer and accessories 20% on reducing balance
- Investment income has been omitted from the Cash Flow Statement and this has been regarded as a integral part of the operating activities
- All known expenditure paid after the 31 December 1994 attributable to the accounting year has been incorporated in the Financial Statements.

2. MEMBERSHIP SUBSCRIPTIONS

New Members
Membership Renewals

1994	1993
3936	5639
12670	13932
16606	19571

3. INTEREST RECEIVABLE (NET)

Bank Interest (net of Tax)
Bond Interest (Gross)
Corporation Tax on Bond Interest

1994	1993
390	1058
0	84
0	(21)
390	1121

4. FIXED ASSETS

COST to December 1993
Additions during the year
COST to December 1994
DEPRECIATION TO December 1993
Charge during the year
BOOK VALUE at 31 December 1994

TOTAL	EQUIPMENT	COMPUTERS
10758	5314	5444
2466		2466
13224	5314	7910
3703	2509	1194
1516	420	1096
5219	2929	2290
8005	2385	5620

5. CASH AT BANKERS

Current account
Premium Account
Semi-annual Account

1994	1993
177	227
3313	15712
8538	0
12028	15939

6. CASH FLOATS

Chairman
News Editor
Exhibition Organiser
Branch Organiser

1994	1993
250	250
1500	1500
0	200
300	300
2050	2250

7. CORPORATION TAX

During the year ended 31 December 1994 all interest was received net of tax and no corporation tax becomes payable

8. ACCUMULATED FUNDS

BALANCE at 31 December 1993
(Deficit) of Income over Expenditure for the year
BALANCE at 31 December 1994

1994	1993
22703	24500
(1798)	(1797)
20905	22703



The Association
of
Woodturners of Great Britain

5th. INTERNATIONAL WOODTURNING SEMINAR

University of Warwick 11th - 13th August 1995

Ticket application (Please use BLOCK letters throughout).

MEMBERSHIP NUMBER _____

SURNAME _____ (Mr., Mrs., Ms., Miss, Other)

OTHER NAMES _____

FULL POSTAL ADDRESS _____

TELEPHONE NUMBER _____ CAR REGISTRATION No. _____

I wish to apply for _____ tickets for standard single accommodation at £175.00 each.

_____ tickets for standard double accommodation at £175.00 each

_____ tickets for en-suite single accommodation at £215.00 each

_____ tickets for en-suite double accommodation at £215.00 each

_____ tickets for non-participating delegate(standard) at £80.00 each

_____ tickets for non-participating delegate(en-suite) at £120.00 each

I enclose cheque/postal order payable to AWGB in the sum of

£ _____ IN FULL PAYMENT for tickets as detailed above

OR

£ _____ IN FULL PAYMENT for NON-RESIDENTIAL tickets.

OR

£ _____ deposit(s)* on _____ tickets and undertake to pay the balance by 30* June 1995.

*(Deposit is £50.00 per ticket)

Signature _____ Date _____

This application form should be sent to:

Len Grantham, Spindles, Cooper Close, NETTLEHAM, Lincolnshire, LN2 2XX
TELEPHONE 0522 595660

R. G. WOODWARD
DSC., MA., C. Eng., FIEE
CLERK



33A HILL AVENUE
AMERSHAM
BUCKS HP6 5BX
TELEPHONE 0494-725903

The Worshipful Company of Turners

PLAIN TURNING COMPETITIONS

THURSDAY 29th JUNE 1995

In Conjunction with The Association of Woodturners
of Great Britain

COMPETITION ENTRY FORM

I have read and agree to abide by the Rules and Conditions for the Competition Class of entry
Open/Junior.

Name _____

Address _____

Postcode _____ Tel No. _____

DESCRIPTION OF ENTRY

1. Size of Item: Length _____ Width or diameter _____ Height _____
2. Type of wood or other material _____
3. Description of entry _____
4. Is the work your own bonafide work and property? _____
5. Details of interest to the Judges.

6. Personal Details

1. Age (if under 19 years old) _____
2. Occupation _____
3. Are you a professional or an amateur turner? _____

Please return completed form by the 15th May 1995 to :

The Clerk, The Worshipful Company of Turners,
33A Hill Avenue, Amersham, BUCKS, HP6 5B

Signature _____ Date _____

MINUTES OF THE COMMITTEE MEETING

Sunday November 13th 1994 at Held at Bretforton, Nr Evesham, Worcs

Present: Ray Key Chairman, Hugh O'Neill Secretary, Len Grantham Treasurer, Ken Allen, Eric Ditchfield, Frank Clark
Apologies received from Mike Dennis, Chris Lindup, George Hunter, Chris Cooke.

1.2 In view of the letter from Chris Cooke it was agreed that the Chairman should write to suggest that Chris Cooke retires from the Committee.

2.0 MINUTES OF THE LAST MEETING

2.1 Minutes had been circulated and were accepted.

3.0 MATTERS ARISING FROM THE MINUTES.

3.1 It was agreed that we should use up supplies of old headed paper.

3.2 The new pack now goes to all new members on joining.

3.5 Apollo had failed to provide the promised lathes and therefore Reg Sherwin had provided his own Appolo lathe for the NEC demonstrations, and we have paid his expenses.

4.0 TREASURERS REPORT

4.1 The new style report was welcomed, providing a much clearer layout.

5.0 CHAIRMAN'S NOTES

5.1 The Chairman stated that we need to tighten up on correspondence procedures.

The Secretary suggested that a series of step by step procedure guides be developed covering key committee activities to avoid the continuing duplications.

There is a need to hold a longer planning and procedures meeting, this would probably require an overnight session

6.0 BRANCH CO-ORDINATORS REPORT

6.1 A short report was given on the Branch Representatives meeting.

6.2 Border Woodturners who had reported that they are a 100% membership branch have now advised that only 6 of their 30 members are paid up members of the AWGB. It was agreed that we should write to say that under the circumstances they did not qualify for free insurance and would have to pay the £120 fee.

6.3 It was noted that we have no mechanism for finding which members are members of which branch. This will create difficulties over subscription renewals.

6.4 Membership renewal notices are to go out with the newsletter next week.

6.5 The Chairman suggested that each Branch Delegate should take a group of branches in their area and should act as a "Branch Area Co-ordinator".

6.6 The Chairman is to write to all ex affiliated Branches identifying what is now on offer. This will then be followed up by the Area Co-ordinators.

6.7 The Start up pack is to be rewritten.

6.8 The new Branch Handbook has been very well received. It is to have names and addresses of firms who have supported us added for the future.

6.9 The names of turners accepting commissions is to be taken off the computer and passed to Graham Lovett who will then contact the individuals and ask what type of work they do. A full list will then be produced for insertion into the handbook. Details of demonstrator grants to be added.

6.10 Notes are to be included on the election of Branch Representatives. This will come from the Constitution.

7.0 EXHIBITION REPORTS

7.1 The Sandown Park show had been successful with 35 new members signed up.

7.2 The associations stand at the NEC had been a huge success. We had offered something different to the main demonstrations and had obviously met a real need. It is anticipated that we may now do the same at Wembley, and we should be prepared to say to organiser - "This is what we will do".

7.3 The stand needs a supremo who determines what the demonstrators will and will not do. There should be two demonstrators on each of the two days. The value of a "general fielder of questions" proved very useful. It was agreed that demonstrators should not be allowed to advertise their own service/courses.

7.4 The main part of the stand requires three stewards each day - local members should feature.

7.5 Those we invite to supply the lathes to be scheduled.

7.6 Len Grantham to run the demonstration part of the stand at Wembley.

7.7 Most of the work loaned for the shows has now been returned. Some larger pieces have yet to be dealt with.

7.8 We will now call for work for a major static exhibition. We should ask Branches for 4 or 5 pieces each, the items to be retained for one year.

8.0 INTERNATIONAL SEMINAR

5

8.1 All nine presenters have now accepted. 5 are to do four slots and the remainder three each. (Paul Clare, Bill Jones, Bert Marsh, Gary Rance, Keith Rowley, Richard Raffan, John Jordan, Michael Hosoluk and Johannes Rieber). We will then invite three of the delegates to also do one slot each.

8.2 The lathes are to be provided by LRE, and Simon Keene will do the chain saw demonstration. Bill Wilder is to be asked for the wood.

The photography will involve the production of a photo record, and "how to photo your own work" workshops. There will not be slide packs as these have not proved popular. The photographer is to be Tony Boase a professional fashion photographer (and avid woodturner!). He will not charge a fee and is to be given a free seminar. He is to be provided with film to do six or seven sets of slides.

8.3 The lecture theatre will seat 320 and we will have two linked marquees in the courtyard for exhibitions and trade stands. The demonstration suites are around the courtyard.

8.4 Charges are set at £175 for a single room or £215 en suite. Non participating spouses will be charged £80. All services including towels and soap are provided.

8.5 We are aiming for 200 plus paying participants and guests.

8.6 Dates fixed at August 11th to 13th.

8.7 Main demonstrators on past seminars (3 or 5 slot presenters) can attend for the cost of accommodation and meals only.

The auction and raffle are to be handled differently. At the Saturday night banquet we will hold an auction to generate a free place for a youngster at the next seminar. We will hope to build up a fund for future free places. The raffle only will be held during the wind up session.

Members are to be invited to submit work for the auction.

8.8 Invitations to the seminar are to be sent out with the notice for the AGM.

8.9 Ray Key is to contact all overseas demonstrators to enquire if they wish to do workshops while they are over here. Details will then be advised in the next Revolutions.

9.0 INSURANCE

9.1 The issue of professional indemnity has now been taken up with Ryan Brokers.

9.2 The Secretary reported that Martock had been covered from August 1st.

10.0 TRAINING ISSUES

10.1 The Chairman said that he was not au fait with the current position. Hugh O'Neill then Len Grantham gave a resume of the work done on the two day course outlines, the registration of turning courses, and on NVQs.

10.2 City and Guilds Institute advise that we will hear nothing of the Crafts Occupation Board before September 1995. The C & G have been sent a synopsis of the training file and will be circulating this internally.

10.3 Eric Ditchfield has been in contact with the Worshipful Company working with a group including Malcolm Cobb and Sir Christopher Tyson in the chair.

11.0 AGM ARRANGEMENTS

11.1 Ken Allen is to try to obtain his local village hall (Etching, Rugeley, Staffordshire) for the event at some time in late March or early April.

11.2 The Secretary will therefore have to do a mail out asking for committee nominations and motions. This must go out January 15th at the latest. The agenda and joining instructions will then go with Revolutions. This will have to be scheduled for the end of February to meet the timings laid out in the constitution.

11.3 The four recently appointed Branch Delegates will serve through 1995 to April 1996.

11.4 The Chairman will stand for one more year and the Secretary and Treasurer indicated that they would also accept nominations for a further year. All posts are however to be offered for nominations.

11.5 1 Committee member is required, the others having a further year to serve.

11.6 It was suggested that a Branch Reps meeting be held in the morning before the AGM.

12.0 ANY OTHER BUSINESS

12.1 Eric Ditchfield asked if we could now consider a major exhibition. Discussion scheduled for the next meeting.

12.2 Gordon Sloane of the Worshipful Company has asked that we stage a competition and exhibition similar to 1993. It was suggested that Branches should organise group/area collection of items. Information to go into the February Revolutions.

12.3 It was agreed that we should purchase a further set of the Ray Key videos for the library as there was a demand for these and some members had been on the waiting list for some time.

12.4 Ken Allen is to try to dispose of our redundant ATARI 286 computer.

12.5 Hugh O'Neill advised of a contact from a group of French students. A note of their requirement for places to visit is to be included in Revolutions.

13.0 DATE OF THE NEXT MEETING

13.1 The next meeting will be held at Hugh O'Neill's new address on Sunday February 19th.

MINUTES OF THE COMMITTEE MEETING - SUNDAY FEBRUARY 19TH 1995

held at Myttons Cottage, Boraston, Tenbury Wells, Worcs.

Present Ray Key Chairman, Hugh O'Neill Secretary, Ken Allen, Graham Lovett, Tony Witham, Chris Lindup. Apologies received from Len Grantham, Mike Dennis, Eric Ditchfield, Frank Clark, Tony Waddilove, George Hunter. (Many absences being due to the fact that members concerned will be heavily involved in the Wembley show during the following week.)

2. MINUTES OF LAST MEETING

2.1 Chris Cooke has now resigned from the Committee.

2.2 The Borders woodturning group no longer exists. A new group is being set up with a 100% AWGB membership.

2.3 The Branch start-up pack has been rewritten 2.4 Graham Lovett is now waiting for the list of turners accepting commissions.

2.8 The Minutes were signed by the Chairman.

3.0 AGM AGENDA, NOMINATIONS AND ARRANGEMENTS.

3.1 The Secretary reported one nomination only. This proposes Chris Lindup as Vice Chairman. There will not therefore be a need for a postal ballot.

All present members will therefore be standing for re-election unopposed. However it needs to be stressed to the general membership that some of the present Committee will **not** be standing again next year.

3.2 With the election of Chris Lindup to Vice Chair, another Branch Representative is needed. An election for this post will be held at a special Branch Reps meeting on the morning of the AGM.

3.3 Ken Allen's wife is to organise a buffet lunch for Branch Reps and Committee Members. Tea and biscuits will be provided at the end of the meeting for all delegates.

3.4 We should start to look at all Branch nominations to identify possible candidates for future committee posts. 3.5 The Chairman tabled a draft of the agenda and a map for inclusion with the next Revolutions. The newsletter will have to be in the hands of all members by the middle of March.

4.0 TREASURERS REPORT

4.1 The Chairman circulated the report which shows a substantial "loss" for the year but this is accounted for by the transfer of seminar surplus to a separate seminar account. The accounts showed a surplus at the end of the year of some £3586, with £8474 in the seminar fund. The figures also reflected the residual costs of the constitution and postal ballot exercise at the beginning of 1994. 4.2 Membership figures showed 1577 names on the computer lists but as at 16 Feb., 523 had yet to renew subscriptions. It was identified that although all Branches had made returns, some had still not received subs from all their members. 4.3 The Treasurer had proposed that those with outstanding subs should now be removed from the computer listing and all future mail outs. It was agreed however that they should receive one more Revolutions in which there would be a warning that this would be the last edition for those who had not paid up. Ken Allen is to write to Branches reminding them to collect outstanding subs.

4.4 The Secretary suggested that we need to take a fundamental look at various correspondence, membership and record systems, including Bankers Order ideas. This was agreed for a future ALL meeting.

5.0 CHAIRMAN NOTES

5.1 The Chairman identified that all his concerns had been separately minuted.

6.0 BRANCH ACTIVITIES AND SPECIAL MEETING ARRANGEMENTS.

6.1 Special meeting arrangements had already been covered

6.2 Reports were received from each Branch Representative.

6.2.1 **George Hunter** in a written report stated that his contact with all non-affiliated groups in his area had been well received.

6.2.2 **Tony Witham** has contacted the North Lincoln group who has 40 members, 60% of whom are AWGB, and they are pressing for 100% status and affiliation.

6.2.3 **Chris Lindup** as contacted Devon who have 35/40 members almost half of whom are AWGB. They wish to move to 100%. The group has suggested lower subs for retirees, but it was identified that possibly two thirds of our total membership fell into this category. Cornwall were "friendly" but are not directly interested.

The affiliated Branches he has contacted (East Surrey, and Herts and Beds) had appreciated the call. They had expressed concern about the quality of some of the tutors on our list of names.

6.2.4 **Graham Lovett** has contacted all non affiliated groups and there had been no problems. He is to visit Worcester tomorrow, and later Staffordshire and South Cheshire.

The Chairman thanked the representative for their activity and reports.

6.5 The Secretary asked for direction on how to react to membership enquiries, stating that he did not like putting enquirers in touch with non affiliated clubs as they may then not then join the Association. It was agreed that those asking for local clubs in their area should be given the contact only if there was a local affiliated group. If no affiliated group existed, the enquirer would be told that "there may be local woodturning groups but we do not have details". It would be stressed however that they would get names and addresses of other members in their area once they had joined

6.6 It was agreed that the secretaries of all non affiliated groups would be sent one copy of each edition of Revolutions to keep lines of communication open. Area Representative would then be able to follow up.

6.7 Ken Allen has produced a list of the questions that you are likely to be asked when you visit a club.

7.0 EXHIBITIONS

7.1 A full report had been received from Eric Ditchfield covering items as follows:

7.2 **Worshipful Company.** It has been suggested to the Company that they try to find a venue for a larger, longer term exhibition of competition entries. The Chairman identified a crafts guild gallery in Bond Street, and the Secretary advised on St Martins in the Field possibility. Organisation of such an exhibition would have to fall upon the Company as they have more human resources than we do.

The competition is scheduled for June 29th and we may have to run with the existing arrangements this year. Notice will appear in the next Revolutions. This should invite all individual members to submit (not just through Branches) and we must push to raise the quality and quantity of the entry. We have so few junior members that we are unlikely to get a bigger response in this section and there may be a need to reassess this in the future. 7.2

Wembley. 45 turners had been invited to submit, 21 had replied. Frank Clark has had confirmation from Avon, Middlesex, East Surrey and West Midlands Branches. Some concern was expressed about the general apathy. Craft Supplies are bringing the timber and the finishes etc for the demonstration area.

Poolewood are supplying the lathes but they have no van. Len Grantham is therefore hiring a van to deliver and return the lathes. This will incur the Association in hire costs and overnight accommodation in London.

7.3A Major Exhibition was not discussed.

7.4 **Seminar Exhibition** - "The Instant Gallery". That this superb collection of work is not seen by a larger public has been a long term concern. Eric Ditchfield has suggested that we contact all local schools, clubs, newspapers etc. The idea of a formal press/gallery owner reception was proposed by the Secretary. The Chairman has agreed to discuss this with the Seminar sub committee and report. The Secretary offered to "Press Officer" such an event. He would invite press, TV and all gallery owners on the Crafts Council list. He also suggested that members bringing work should be given 3 or 4 reception invitation cards to send to their own galleries and major buyers. Such an event needs to be done properly. The Chairman will ask the sub committee to consider make this reception the principal event of the first evening.

7.5 **Rufford Craft Centre.** The Chairman reported an invitation for the Association to be involved in a woodworking and woodturning week end at Rufford (near Newark) on June 23 - 24. This could give the Association two stands - one to sell the Association and the other to sell members work. We would also provide a list of turners whom Rufford might invite 25 turners to take individual stands and provide a pool of 8 demonstrators. We would also provide names of companies who might take up trade stands. Rufford will undertake all the organisation and invitation. They do an excellent job on publicity. The main problem is that the exhibitors stands are in the open with minimal cover - "OK for pottery but not for woodwork". Stands will cost £100 per week end with 50% reduction for demonstrators. It is not known if Rufford will provide the demonstration lathes. It was agreed that the Chairman should express our interest.

7.6 The Secretary advised of contact from Tee Publishing offering free space at the Midlands Woodturning and Woodworking event at Stoneleigh, and a paid for stand at the Crafts for Britain trade show in Harrogate. It was agreed that both should be declined but that we would like to be considered in the future.

8. INTERNATIONAL SEMINAR UPDATE.

8.1 Bill Wilder will be supplying the timber

8.2 Bookings are now over 100 but we need to lift our promotion. A note is to go to Branch Secretaries saying "get your bookings in quick".

8.3 The offer of special rates to past presenters has been well received and there has been some take up.

8.4 John Tappenden has had a heart attack. A get well card and best wishes are to be sent. He has done a lot of work towards the trade exhibition. We will wait to hear what action we now need to take.

9.0 FEBRUARY REVOLUTIONS.

9.1 The next issue will carry the AGM agenda and must therefore be in the hands of all members by mid March latest.

9.2 Mike Dennis reported he had no material.

9.3 Committee members identified that they had now or would shortly send several items.

10. WOODTURNER PAGE

10.1 There has been a breakdown in the supply of material.

11. ANY OTHER BUSINESS

11.1 There has been a request for the loan lathe from an 11 year old. This was accepted.

11.2 Ken Allen is to exchange the colour monitor for the B & W one he currently holds, and will then try to sell the old machine for what he can get (£50 was suggested). 11.3 It was agreed that the Association should send get well or condolences cards to members and families as appropriate.

11.4 There has been no progress on training and education issues. The Worshipful Company member involved is changing jobs. And there is a change of responsibility at City and Guilds.

11.5 We will invite members through Revolutions to identify if they provide tuition and in what areas. We will then publish an unvetted list. This will provide information against enquiries and will be added to the Branch Handbook.

12.0 DATE OF THE NEXT MEETING.

12.1 This will be agreed at the AGM but will probably be May 21st in the London area.

Branch News

I am writing as Chairman of the Norfolk Woodturners Society, and thought that members nationally might like to know that we, as a Society, are "twinned" with the Association of Woodturners of Georgia, U.S.A. which is based in Atlanta.

The twinning was established 2 years or so ago by John Holyoak, of our Society and Don Loveless of Atlanta, with the aim of exchanging cultures, ideas and visits to each others countries.

John himself, and his wife June were the first to take advantage of the visits, but paid only a fleeting visit of 2 days or so, whilst in transit to Arizona. They stayed with the Loveless' Don and Nell, at their beautiful home in Atlanta.



In May last year, my wife Valerie and myself took ourselves off to Atlanta, and spent 4 days with the Loveless', 3 days with Mai and Jo McMullen (parents of Clark McMullen, an excellent turner, and member of the G.W.A.) and Austin and Linda Staheli, Austin also being a G.W.A. member.

American hospitality is legendary of course. We were taken everywhere and shown everything there was to see, including - a great stroke of good fortune - the G.W.A. had already arranged a visit to Ed Molthrop and we spent Saturday morning at his home, where we were entertained by Ed and Mrs Molthrop. Both were so generous with their time. Mrs Moulthrop is a weaver and my wife was thrilled to see her wonderful creations! As far as Ed's work one can only marvel at Peg-soaked legs weighing ½ ton being lifted by engine hoist on to his lathe, and seeing his tools, as long as boat hooks, standing in the corner, almost touching the ceiling!. We also went to see Nick Cook, Secretary of the A.W.A, David Goines in N. Carolina, and Clark McMullen in his workshop, with his lathe which he built himself, and will actually swing 48" diameter over the bed! between centers.

Having spent 10 days with this sort of hospitality, Val and I then took ourselves off by train to New Orleans, for a week of Jazz, food and luxury, 32 floors up in the Marietta Hotel, overlooking the Mississippi, on which we took trips on the Sternwheelers. A wonderful experience!

After the New Orleans visit we returned to Atlanta for our last two days, where again we were royally entertained, finally taking in a Ball game between the Atlanta Braves and Philadelphia - not to be missed!

Our last luncheon was taken in a revolving restaurant 750 feet up - to which we were shot up in a glass lift on the outside of the building, like a rocket.

Since arriving home, we had visits from two of our hosts - Don and his wife for a week, we showed them a great deal of East Anglia (and York and Dovedale) and visited John Ambrose. Mac and Jo McMullen stayed only 2 days in transit to Scotland; they are Anglophiles, having visited England regularly for the last 8 years. Mac is very impressed with our roundabouts - they don't have them over there - only intersections - quite a thought!



On our third evening there we were taken to "Highland Hardware" where I was due to give a "presentation", as they call it. Horror of horrors - the lathe didn't work!

Eventually one of the engineers pressed the right button, so I was able to get on, show slides of our area, our house and garden, my workshop, and our members work. Then a short demo. on some wet holly which I had taken from England. Wet holly shavings are impressive! revenge came later - we asked Don to do his for us on his first night.

Yes, we can thoroughly recommend twinning, and would be pleased to share our experiences of it with other Societies who might like to try it!

John Tuck.

1995/6 Programme of Meetings



The programme includes a variety of activities requested by members. These include a talk from a tree surgeon, a bring and buy sale (always very popular), a presentation from a woodturning supplier and a demonstration from Robert Sorby's. In addition members have volunteered to give presentations, Colin Hazell on home-made chucks and Simon Keen on home-made "bits and pieces" for the workshop. Meetings at which members talk or demonstrate are always well liked and very interesting. Once members are prepared to take the plunge we find a wealth of talent amongst them.

Tool Bank

The branch has now started its very own tool bank. Tools will be acquired as branch property and will be loaned to members for a small fee. It is intended to include specialist tools that members might only use occasionally or which they might like to try before purchasing their own. The bank starts with some shear scrapers that have recently come onto the market. It is hoped to add items to the bank on a regular basis as funds allow.

We run a branch library on a similar basis and this contains a very healthy and growing collection of books, catalogues and videos. It is heavily used and a great asset.

Monthly Competition

The monthly competition continues to be a popular feature of meetings with some very interesting projects, to name a few - a bird box, a pair of identical goblets, an item made from wet turned wood and a piece involving colour staining.

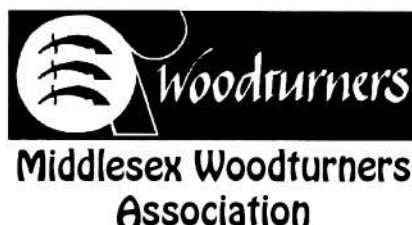
Change of Venue

From January 1995 our monthly meetings have changed venue. We now meet at the J.N. Fear Institute, High Street, Keynsham. The meetings continue to be on the third Thursday of each month at 8pm.



The Heart of England Branch has a new Secretary. His name and address is:-

Gordon Evans, Deepslade,
Banbury Road, North Newington,
Banbury, Oxfordshire. OX15 6AB



Congratulations go to Middlesex Member Gary Rance for being selected to demonstrate at the AWGB International Seminar this year.

A full programme of events is planned for the coming year including:-

April 13th	Nick Perrin
May 11th	Gary Rance
June 8th	John Hunnux



Ron Green won first prize in Burr Challenge that was held at the Good Woodworking Exhibition at Alexandra Palace with his Jarrah burr entitled 'Australia', so named because the shape was extremely similar to the outline of Australia.

The Annual Exhibition and Sale of Members work will be held at the Rayrigg Rooms, Bowness on Windermere from Friday 26th May to Friday 2nd June.

Future events include a full days demonstration with Keith Rowley on May 20th at the John Ruskin School Coniston

KENT BRANCH



Secretary of Kent Branch, Diana Cheney is planning to return to New Zealand (if she has not already left by now). Her place will be taken by Chris Wilson who lives at.

Long Acres, Chart Road, Chart Sutton, Maidstone, Kent ME17 3RB

Get Well Soon

I am sure all members would like to join me in wishing a speedy recovery to stalwart members of the AWGB.

Trevor Dawes one of the Founders of the Kent Branch, is recovering from heart surgery in early January, at the time of writing he is making a good recovery. Trevor has always played a major part in Kent affairs making the arrangements for visiting demonstrations and much more.

John Tappenden a member of our Avon Branch and at the time of writing is in hospital after a heart attack, surgery may be the answer. John was for several years on the AWGB Committee and still plays a very active role, mainly where the Seminar is concerned. It is John who is in contact with the traders and arranges the Trade Stands and Raffle prizes.

GET WELL SOON BOTH OF YOU

If your Branch has any event that it wants to advertise to a wider audience or a story to tell that might be of interest to others then please let me know. These Branch News pages are for this purpose and 'ITS FREE' to all AWGB Branches.

Copy of a letter sent to all branches by our Chairman Ray Key

Dear Woodturning Group Chairman, Secretary, or Contact person,

This is a courtesy letter to you on behalf of the AWGB, as you know major changes took place earlier in the year with the adoption of the AWGB's new constitution. It was always our intention not to lose contact with those Groups who felt at the time they were unable to endorse those changes, this letter is written in a spirit of goodwill to inform you of what the AWGB has done since the AGM in April.

The Eighteen 100% AWGB Branches held their first meeting in September to elect their Four representatives on to the Executive Committee, they reflect the wide regional spread we hoped for. They are:

George Hunter from Scotland
Chris Lindup from Avon
Graham Lovett from West Midlands
Tony Witham from Essex
Ken Allen from Stafford is the National Branch Co-ordinator.

The nearest newly elected Branch representative to your area or Ken Allen will be making a courtesy phone call to you in the near future.

The major things that have been implemented that concern Branches are the following:

INSURANCE: Public & Products liability up £1,000,000 has been provided for the Eighteen 100% Branches at NO CHARGE to them.

AWGB BRANCH HANDBOOK: This has been produced in a loose file binder so that it can be added to and updated at any time, at this time it provides 28 pages of information. This includes the Executive Committee addresses, Affiliated Branch addresses, a 30 name Demonstrator list, Equipment list, Video and slide list and much more.

HEALTH & SAFETY: Laminated 12" x 16" Health and Safety poster to be displayed at demonstrations has been provided and supplied to each AWGB BRANCH

REFUNDS: Branches that collect their members AWGB subscriptions receive

a £1.00 per member refund.

GRANTS: Each 100% AWGB BRANCH can receive a £120 Demonstrator grant per year for a day demonstration by a demonstrator from the AWGB list

EXHIBITIONS: Each AWGB Branch is invited to send a selection of members work for display at shows like Practical Woodworking and Woodworker. (Numbers specified by the Exhibition Co-ordinator)

PUBLICITY: AWGB Branch publicity is printed at no charge in the AWGB's quarterly newsletter 'REVOLUTIONS'.

BRANCH REPRESENTATIVE MEETINGS: One or two of these a year are now held.

Other things that have been on offer for some time to Branches are as follows:

INTEREST FREE LOANS: Up to £200 per AWGB Branch, subject to a maximum of £500 on loan from central funds at any one time.

BRANCH AREA MAILING LISTS:

DEMONSTRATION EQUIPMENT: AWGB signs, Overhead Mirrors, Exhibition display equipment

NATIONAL DEMONSTRATOR LIST:

VIDEO SLIDE HIRE:

INTERNATIONAL SEMINAR DEMONSTRATORS: Individual presenters are sometimes willing to demonstrate for AWGB Branches, NO CHARGE by the AWGB is made, fees are negotiated with the individual by the Branch, just as with a UK demonstrator (All four of our 1995 overseas demonstrators are willing to demonstrate for AWGB BRANCHES)

THE INDIVIDUAL MEMBER WHO IS NOT A MEMBER OF AN AWGB BRANCH RECEIVES:

'REVOLUTIONS': The AWGB's quarterly newsletter. A precis of all AWGB Committee meetings is now included in this.

SEMINARS: Priority booking to the AWGB Bi-Annual Seminar

INSURANCE: A very fine policy has been negotiated specially for AWGB Members.

EXHIBITIONS: Individual members of

proven quality are invited to have their work displayed at shows like Practical Woodworking and Woodworker on a rota basis.

BADGES: AWGB Lapel badge can be purchased.

DISCOUNTS: The AWGB has successfully negotiated admission price discounts for members to the major woodworking shows.

LATHE: The AWGB has a small lathe with tools and chucks that it loans out to a young or needy person on a twelve month basis.

VIDEOS & SLIDES:

The AWGB has a number of video's and slide packs that can be hired for a nominal sum.

Those members who are a member of an AWGB BRANCH of course will gain more because of their regular meetings and interaction with like minded individuals.

THINGS IN THE PLANNING FOR THE FUTURE:

- A National Woodturning Exhibition
- Involvement at National level with Training and Teaching
- Expanded AWGB Branch Handbook
- Improved communication with all Members and Branches
- A number of free places at the AWGB Bi-Annual Seminar for those in need from funds generated by the auction at the event. (One will be on offer this year)
- Benefits of some kind for the full time Professional Turners.

I hope you find all the information provided of interest, I hope that when our AWGB Branch contact person calls, you can have a positive talk.

Yours sincerely
Ray Key (Acting AWGB Hon Chairman)

PS. If you are no longer the contact person for your group would you please forward this letter to that person, or let me know to whom I should send a copy, I thank you in advance for your trouble.

RAY KEY reflects on the benefits of seminars, and sets out what he feels makes a good event.

Woodturning seminars and symposia have become something of a phenomenon since the late 1970s. The first ones to my knowledge were organized by Albert LeCoff in the USA around 1977.

The first seminar was held in this country in 1980, at John Makepeace's Parnham House, and it was a real eye opener. The input from turners such as Ellsworth, Hogbin and Stocksdales made us look at woodturning in a new light.

Woodturning really has always been thought of as a craft, but these people made you think of it more as a creative art form.

Some people I know have doubts about what seminars achieve. I have no doubt that they have created nothing but good worldwide for those interested in woodturning.

Seminars are held regularly in New Zealand, Australia, Canada, USA, Norway, Denmark, Finland, Sweden, Ireland, and the UK. National woodturning organizations have been formed, or the seeds sown for their creation, at seminars.

In 1985 a woodturning conference was held at The Arrowmont School for Arts & Crafts in Tennessee, USA. It was at this event that the ground rules were discussed for the American Association of Woodturners.

Mick O'Donnell and I attended that event and felt we needed a major seminar in this country as there hadn't been anything since the Parnham 1980 event, at least on a major scale. This duly happened in 1987.

My wife Liz and I hosted meetings at our house for a number of the pro turners in this country Bert Marsh, Cecil Jordan, Don White, Dave Regester, Toby Kaye and many others - around 15 in all.

It was their enthusiasm and commitment, coupled with the fact we knew there was a desire to see a national body formed (several hundred people had responded on the application forms for the seminar) that led to the formation of the AWGB at the 1987 Loughborough Seminar.

Since that time we have organized a biennial seminar.

The most striking thing that comes out of these three-day events is the total willingness of the presenters to share information that may have taken them many years to acquire.

Discussions are on-going, information is being exchanged, and it is this desire to learn from each other that makes these events such a success.

This success is not guaranteed, however, and does not come about by accident. It is down to the organizing body to get things right, and this means the coming together of a great number of things.

So what things make for a good seminar? These are few of them to my mind: a central venue with on-site accommodation and good food. Good workshops, lecture theatres and auditorium. A venue where the hosts are co-operative. Good lathes for the demonstrators, and good backup equipment, and materials.

A first-class team of helpers willing to work for each other and the presenters, and who are also helpful to the delegates, is also essential, as is excellent administration - something the AWGB has been blessed with.

When you have these things sorted out you give yourself a good chance of pulling things off.

Then you need the selection of presenters to be right. Seminars are lathe demonstration-orientated events by and large, so it's no good having a glut of spindle turners or bowl turners or traditionalists or the avant-garde. There has to be balance - and something for everybody.

Once you have this group assembled, you then build around them with speciality demonstrations, discussion groups on design, marketing, workshop safety, chainsawing, how to photograph your work etc.

Trade stands are a must, as is an Instant Gallery for all participants. Things like raffles, a tombola, and auctions all help to make up the picture.

From these events come many spin-offs. Life-long friendships are formed. Some delegates have gone away and formed AWGB branches.

Having given you the low-down on what it takes to make these events successful, it's time to tell you what the AWGB seminar will offer this year.

We have an excellent new venue with improved facilities in every area from the accommodation through to the workshops, all of which have tiered seating.

Warwick University is the place in August for 21/2 days. The venue is much bigger, which allows us to grow, and should ensure we can accommodate all who wish to attend.

The rest of the information on this year's seminar can be found elsewhere in this newsletter.

Visit by French woodturning teachers

The AWGB has been approached by an establishment in France. They are involved with the vocational teaching of students, in this case with a woodturning department.

A group from the college are visiting the UK in 1995 specifically 17th to 28th April. They do not intend travelling around to much from London.

If any group can arrange demonstrations for them while they are here please contact Lycee Professionel, 39260, MOIRAN REM MONTAGNE, France Fax: 84420977

Chris Lindup explains some of the benefits he has enjoyed as member of the AWGB

Article as published in Woodturning magazine

WHY JOIN?

I joined the AWGB two years ago because I wanted to learn about woodturning to know about lathes, other equipment, tools and timber. Above all I wanted to learn to turn wood well by listening to and watching experienced turners.

So often I have taken up new interests, bought in ignorance, and regretted it later. This time was going to be different.

It was. Joining the AWGB made it different. The help and advice I wanted was readily available and freely given (once I'd paid my subscription). It came from competent knowledgeable turners both amateur and professional.

Learning about lathes and tools

I was advised as to what would meet my needs in the way of a lathe tools and equipment. It was so helpful to find out from those in the know and to try before buying.

I still had to decide what I was going to buy, and I did so with confidence because of the knowledge and hard information I had acquired. I felt it gave me a flying start into the world of woodturning. Better still none of the advice and help was thrust on me. Advice came only when I sought it.

Learning to turn

I wanted to learn how to turn well and to improve. My local branch Avon and Bristol helped in several ways.

Regular workshops gave me the

chance to watch at close quarters a number of turners. The workshops usually lasted one day, with plenty of time to question and discuss what was being demonstrated.

I saw Richard Raffan, John Hunnax, Mike Scott, Ray Jones and Maurice Mullins each of whom taught me a lot.

The Avon and Bristol branch has arranged for many well known turners to demonstrate to members its workshops being very popular. Watching and listening to experts has played a big part in my development as a turner. The demonstrations are interesting informative and entertaining.

The wide range of up-to-date books and videos for hire from the AWGB's branch library also helped me. I have bought several books after the benefit of a long look at the contents. Videos are expensive to buy but are certainly worth hiring providing effective instruction.

The AWGB's monthly branch meetings offer a varied selection of topics that have added to my knowledge and skill. This year we have heard about timber seasoning, exploring design, abrasives and finishes, banding and stringing on turned work.

There have also been demonstrations on photographing work as well as a visit from Friends of the Earth and advice from a friendly accountant about the financial side of woodturning. As members we have the chance to have our say and influence what topics will be in the programme.

All meetings have something to offer, those presented by members being particularly interesting. It's surprising what talent we find among ourselves. One example is an interesting and entertaining contribution made by a retired surgeon about keeping fit and healthy on the lathe. Input from members from all walks of life makes the programme rich and fascinating as well as unpredictable.

Members bring from other disciplines

techniques and ideas that often offer improvements and occasionally introduce possibilities never imagined. Their ingenuity and creativeness seems never ending.

At branch meetings there is much talk of tools equipment techniques and timbers. They have been a major factor in helping me learn about woodturning and will continue to be a source of both learning and inspiration.

More than I expected

I have found a number of benefits I didn't initially anticipate such as:

- ☐ discounts from local suppliers of tools equipment and timbers.
- ☐ information about shows and exhibitions.
- ☐ shared transport to shows exhibitions and workshops.
- ☐ opportunities to cut costs by bulk buying with others.
- ☐ contact with professional turners.
- ☐ contacts for timbers.

bring and buy sales which are always worth attending.

- ☐ I know a man who does contacts.
- ☐ branch woodturning competitions.

I got what I wanted from the AWGB. Indeed I found something more than I'd originally joined for — friends with a similar obsession with woodturning.

I have found a generosity of spirit from amateur and professional turners about all things to do with woodturning and I look forward greatly to monthly meetings.

Other members are interesting, knowledgeable, skilful and often expert. I have visited the workshops of others by invitation been given timber to try and received tuition where my own skills needed improvement.

I have learnt most from entering the monthly turning competition. A project is decided and those who wish to enter can do so. Work is judged by those members present.

Everyone is encouraged to have a go, but no-one pressed. At first the competition didn't interest me but it wasn't long before I was tempted to try. Seeing such beautiful work from others I wanted to see if I could produce work to the same standard.

This has taken me to new heights of skill and competence, challenging me to do things I might otherwise not have attempted. I realise now the reasons I gave for not entering the competitions were really excuses.

I was surprised and delighted at the satisfaction and pleasure I felt when I entered. Even more pleasing was to be placed in the first three with a set of bangles one month and a pair of spoons another.

My woodturning has improved as a result of taking part in the competitions and from comparing my work with that of others.

I've written chiefly about the AWGB at branch level but the branch only functions as well as it does because it has the national organisation to support it. Nationally the AWGB aims to support woodturning and woodturners offering a wide variety of benefits to members— but that's another story.

If you want to turn wood, to learn to do it well, to continue to improve and to be inspired with like-minded people, then join the AWGB.

ADVERTISEMENT.

WANTED - Bits for a Multico 1000 lathe: Tool carriage handle, tail stock points, and long work tool rest. Also wanted small lathe for miniatures providing 5000 to 10000 RPM top speed. And 2 or 3 MT revolving tailstock. Hugh O'Neill

3rd Woodturning Seminar 15th July 1995

Presented by the
**Suffolk, Essex & Cambs Borders
(SECB)**

A Branch of the
Association of Woodturners of Great Britain
To be held at
Peter Child Woodturning Supplies
The Old Hyde, Little Yeldham, Halstead
Essex CO9 4QT
Telephone 01787 237291

Demonstrators Include

Ray Jones
Keith Rowley
Christopher Child
Nick & Kathleen Abbott

Plus

Pyrography Demonstrations By
Christine Witham

Refreshments available all day. Shop open with many
special offers available.

Display of members work.

Ring 01787 237291 for more information

Tickets

THIS IS A TICKET ONLY EVENT

The cost is £11 to AWGB members, £15 to others
Lunch vouchers are £4.50 extra

To book your place please make out a cheque to :-
"SECB" and send it, with your telephone number, a
stamped addressed envelope, and your AWGB
membership number (if you have one) to:
The Treasurer, Brian Mansfield, 17, Queens
Road, Sudbury, Suffolk CO10 6UH



TURNED WOOD ARTIST

Telephone 0386 830142

The Firs, 53 Weston Road, Bretforton, Near Evesham, Worcestershire WR11 5HW

Member of Worcestershire Guild of Designer Craftsmen • Contemporary Applied Arts • Crafts Council Index

THREE VIDEO'S ON BOX MAKING by RAY KEY

- 1) **THE BASIC BOX** - A basic introduction to boxmaking. Showing how to make this simple box offering suggestions on special tools, wood selection, and finishes. 50 min
- 2) **THE FINIAL BOX** - The viewer is lead skilfully through the steps to successfully complete this challenging, graceful traditionally designed box. 40 min.
- 3) **THE CAPSULE BOX** - Demonstrated are all the techniques, tools and tips given to make this stylized box. Plus, as a bonus, the making of a coolie hat box from the same piece of wood. 49 mins.

ONE VIDEO	£18.00	ANY TWO VIDEO'S	£34.00	ALL THREE VIDEOS	£48.00
+ VAT & Post	£4.95	+ VAT & Post	£8.95	+ VAT & Post	£12.95

SPECIAL OFFER ON BOOKS by RAY KEY

WOODTURNERS WORK BOOK	£17.00 + Post £2.00
WOODTURNING & DESIGN	£15.00 + Post £ 2.00

CHEQUES: Should be made payable to RAY KEY and sent to the above address.

Richard Raffan Masterclass

**The Pen y wern Workshops will be hosting this five
day event between 18 - 22 April 1995**

**Comprising a four day workshop providing hands on tuition for a limited
number of woodturners, and a one day seminar on the 22nd at which Richard
will demonstrate his skills and discuss various aspects of his craft.**

For further information including booking and accommodation details, please write to or telephone:

**Richard Rawlings - Pen y wern Workshops, Pen y wern Farm, Black Hill,
Clun, Craven Arms, Shropshire SY7 OJD**

Tel: 0588 640712 Tel/Fax: 0588 640037