



# Revolutions

Issue No 30

July 1994

Newsletter of The Association of Woodturners of Great Britain

## The AWGB Insurance Scheme for Branches and Members now in operation

**The Association has been successful in negotiating a new insurance scheme the first details of which were announced at the AGM. There are now two schemes, each with an option.**

### Branch Insurance

The Branch or Club insurance will provide £1 million Third Party and Product Liability cover for events organised by the Branch or Club. It will cover demonstrations at club organised events by a visiting demonstrator or a club member and would cover injury to members, visitors, spectators etc. It will also cover branch organised stands at local shows etc. Cover will be provided free to all Affiliated Branches of the Association. Branches should advise the Secretary IN WRITING if they wish to be signed up for this policy, indicating at the same time whether they wish to take up the Trade All Risks extension outlined below. Please advise the name and address of the club Secretary, the current number of members, and indicate the address and dates of normal club events (for

guidance only).

The Association is however very conscious of the risks that some wood turning clubs have been taking in not being covered and has therefore decided, with the brokers agreement, to offer the same cover (with or without extension) to any UK wood turning club whether affiliated to the Association or not. Non affiliated clubs will however have to pay £120 per annum for this cover and must make arrangements through the Secretary of the Association.

**The optional part** of this policy is for additional Trade All Risks Cover for property and goods (equipment, exhibits etc) while in Branch hands. The additional cost of this cover will be £100 pa charged to clubs

The Branch/Club policy runs from May 1 to April 31 each

year. With scaled charges reducing from the ends of July, October and January.

Please note that these policies do not cover Association or Branch or Club members engaged in any activities public or private that are not officially organised by the Branch or Club. ie **IT DOES NOT COVER INDIVIDUAL MEMBERS AT CRAFT FAIRS, SCHOOLS, SHOWS, OWN WORKSHOPS OR WHATEVER.**

There is therefore a separate Individual Member Policy open to all members of the Association. This again has two parts.

### Member Insurance

First there is the Third Party and Product Liability insurance with £1 million cover. This has a premium rate of £50 per annum. There

# Insurance Scheme (Cont'd)

is also a Trade All Risks cover to sums up to £5000 for an extra £50 per annum premium (£100 for cover up to £10000)

Any member who ever turns in public, sells their wares at any time, demonstrates at non branch events, even EVER has a friend or visitor watching them turn in their own workshop, should have the minimum Third Party cover. One feature of this policy is that it also covers turners teaching others in your own workshop. If you have any concern over damage or loss of stock and tools, losing items at exhibition, when selling, or even a break in and theft from your own workshop, you should also seriously consider the Trade All Risks policy.

If you are a professional turner you may feel that the basic cover is inadequate - many workshops have a value over £10000. The All Risks cover may be extended to whatever figure you wish.

All enquiries and negotiations on the individual member policy should be made direct with the brokers who are Colin Ryan Insurance Brokers Ltd, PO Box 110, Ipswich, Suffolk, IP2 0BN. Telephone Ipswich (0473) 217920.

**All Branch or club policies must go through the Secretary of the AWGB and not directly with the brokers.**

## AWGB Executive Committee

### Chairman

Tony Waddilove 11 St Johns Court, London Street, Swaffham, Norfolk PE37 7DB

### Vice Chairman

Ray Key, The Firs, 53 Weston Road, Bretforton, Nr Evesham. WR11 5HW

### Treasurer

Len Grantham, Spindles, Cooper Close, Poplar Farm, Nettleham, Lincolnshire LN22XX  
Tel : 0522 595660

### Secretary

Hugh O'Neill, See note on page 17

### Editor

Mike Dennis, 72 Hawes Close, Northwood, Middlesex, HA6 1EW  
Tel: 0923 829844

### Branch Co-Ordinator

Ken Allen, 90 Peakes Road, Etching Hill, Rugeley, Staffs. WS15 2LX

### Committee Member

Chris Cook, 47 Holts Hill Lane, Walsall, Satffs. WS1 2HZ

### Exhibitions Co-Ordinator

Eric Ditchfield, 5 Elms Road, Fleet, Hants. GU13 9EG

### Co-opted Assistant Exhibitions CO-Ordinator

Frank Clarke, 81 Knightwood Crescent, New Malden, Surrey. KT3 5JP

### Co-opted Members

Mac Kemp, 41 Tanglyn Avenue, Shepperton, Middlesex. TW17 0AD

Chris Lindup, 38 Barry Road, Oldland Common, Bristol, Avon. BS15 6QY

Graham Lovett, 66 Beechcroft Road, Wall Heath, Kingswinford, West Midlands. DY6 9EG

# Editorial

I am sorry that this edition is so late being published. When the deadline date of May 15th arrived I had hardly any material of interest to put into the edition, I seem to remember saying the same thing in the last edition. Since that time the Association has had two Committee meetings and negotiations have been taking place with the woodwork magazines for reduced price entry tickets for AWGB members at the Sandown and the NEC shows. Application forms are included with this edition of *Revolutions* so I hope you feel it was worth waiting for. Most of the copy in this edition has arrived during the last month which has prompted me to reassess the publishing dates for future editions and these are set out below to enable you to plan well in advance any copy that you may wish to submit.

My regret in publishing so late is that I have not been able to publish the information regarding the Suffolk, Essex & Cambs Borders Branch's Seminar that is being held on 30th July. I suspect that by the time you receive this newsletter the event will be over. My apologies to SECB Branch and I only hope that it was a success for you.

I make no apologies however for repeating my message in the last issue. **I need material to publish.** Without it, the newsletter is going to very dreary. I for one will be very disappointed if, after all the effort that has gone into improving *Revolutions*, this was to happen.

A new feature of *Revolutions* is to include in every edition the full list of the Executive Committee Members of the AWGB. I have also included in the 'Branch News' page the logo of the different branches where I have a copy. Some of them are quite ingenious.

Mike Dennis

## **Publishing dates for Revolutions for the next 12 months**

### **Last Date for copy      Publishing Date**

October 15th	November 1st
December 15th	January 7th
March 15th	April 1st
June 15th	July 1st

## **Contents**

Insurance	1
Editorial	3
Chairmans report	4
Tree Surgery	6
Lecture	8
Exhibition	10
Branch News	12
Letters to the Editor	16
Insurance	18
Woodworker Show	19
Thank You	20

*Articles letters, tips etc contained in this newsletter do not necessarily carry the endorsement of the AWGB.*

*It is a policy of the AWGB that in the newsletter we will not review tools, books or products.*

## **Want to advertise in revolutions?**

### **Rates per issue**

Full page	£60
Half Page	£30
Quarter Page	£15
Eighth Page	£8

All four issues less 10%

*Ashley Iles*  
woodcarving & turning tools  
made in the old tradition

# Chairmans report

OK, sorry folks, it is me yet again, I know that I am not supposed to be here in the chair, but I was persuaded to do one more year in the hot seat. So I guess you will have to put up with me for three or four more issues of REVOLUTIONS,

Our AGM has come and gone, This meeting was thoroughly constructive and positive, and if this indicates the workings of the AWGB in the future then you the members, will benefit greatly. The contributions from the AGM delegates the Committee found useful and helpful. We were told that we now had a mandate to run the Association for the members and this we should now do. We now have a comparatively new Committee consisting of the six members appointed through the members election process, three members co-opted temporarily until the four Branch appointees have been chosen and of course the more permanent co-opted members. In total this gives us 12 committee members overall. A sufficient number for general Committee work. You will find in this issue of REVOLUTIONS a full list of

the Committee members. However from time to time there will be sub-committees required to undertake specific tasks. One example is the biennial Seminar (Loughborough) sub-committee. Such sub-committees will be set up in accordance with the Constitution. Generally these should be of say 3 or 4 people unless circumstances dictate otherwise.

Short committee meetings were held immediately before and immediately after the AGM. These meetings were essentially to clear the decks for the new Committee and to welcome on board the new Committee members.

A full working committee meeting was held on 21st May. The main thrust of this meeting was to decide the matters that had to be dealt with without delay and those that should be achieved during 1994. We all accept that 1994 will be a year of consolidation. We now need to get the new system working and to get all involved with its

operation to understand the tasks involved.

For this to be successful the Committee at that meeting clearly saw that communications within the AWGB need to be vastly improved. Here we mean all communications in all directions. This matter will be addressed at a meeting on 10th July. There are several matters in communications that need to be reviewed and one is that the Committee has available to it considerable information to enable the AWGB to operate more effectively. It is now the duty of the committee to publish this information in a form useful to members and branches.

We are looking into the production of an information booklet telling members who is who, what is what and other things besides. If you have any suggestions as to what you wish to see in such a booklet then please drop me a line.

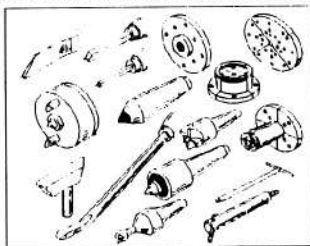
Other matters discussed at the meeting on 21st May included the two forthcoming shows; Sandown Park and the NEC. It is hoped in both cases to offer favourable entrance fees to AWGB members, more on this will come later. The theme for the NEC show has not yet been finalised, however it will not this year contain a charity event. We are working towards operating a stand suitably set out to offer help and advice. Again more later.

The sub-committee organising the biennial Seminar (Loughborough) has been hard at work. The venue has yet to be finally confirmed as have the list of demonstrators. I am able to tell

## Bob Chapman WOODTURNING ACCESSORIES

INNOVATIVE TURNING AND WORK HOLDING PRODUCTS  
DESIGNED BY PROFESSIONAL WOODTURNER

INCLUDING:  
DOVETAILED  
EXPANDING  
PINJAWS  
HSS BEADING  
TOOLS ANGLE  
BOWL GOUGE  
LIGHT PULL  
DRIVER  
AND MANY  
OTHER ITEMS



ALSO STOCKISTS  
OF SANDING AND  
FINISHING  
PRODUCTS  
INCLUDING VSM  
ABRASIVE FROM  
£2.05 PER METRE

TEST REPORTS FEATURED IN ISSUE 25 OF REVOLUTIONS AND  
ISSUES 11 & 12 OF WOODTURNING MAGAZINE

FOR FULLY ILLUSTRATED CATALOGUE SEND 9" X 6" SAE  
AND 70p IN STAMPS TO:  
BCWA 93 PARKWAY, COXHEATH, MAIDSTONE, KENT ME17 4EX  
TEL: 0622 747325

## Chairmans report (cont'd)

you however that subject to unforeseen problems the dates are the 11th, 12th and 13th August 1995,

As you will have seen elsewhere in this newsletter, the subject of insurances has finally been resolved. A new policy for individual members is in place. It is a good policy, I do suggest that those of you that have avoided this issue in the past give careful thought to it. It only takes one accident to cause you considerable problems.

Also in place is the insurance policy for branches. For affiliated Branches this is being funded by the AWGB. However we need to have appropriate information from these Branches in order that their insurance cover may be effected. If you have not yet advised the Branch Co-Ordinator then please do so without delay

A further committee meeting was held on 10th July. You know it really was a pleasure to attend a second committee meeting where the topics were all about a positive future for the AWGB.

Whilst the principle topic was communications, the committee did cover other outstanding matters.

A new AWGB leaflet has been designed. Many thanks to Mike Dennis and Chris Lindup. The previous version was somewhat antique. The new one is a vast improvement. We are now identifying those branches that wish to affiliate to the AWGB. Some of the earlier 'branches' are keeping

their powder dry until the end of 1994 when they will take the decision whether to affiliate or not. OK, this I can understand. By the way, 'affiliation' to the AWGB can be defined if you would refer to the members' ballot on the constitution matter.

The committee (in the form of Graham Lovett) has taken on the task of building a much revised demonstrator list. This should be available before the end of the year.

The committee is preparing a 'Branch Information Pack'. This will contain a great deal of information on all matters AWGB and woodturning. All committee members are involved in this. However insofar as we are an association of members, the contents of this pack will in very large part be published in *REVOLUTIONS* from time to time for the benefit of all our members.

A cut down version of this pack will become the basis of a 'Branch Start-up Pack'. The meeting was fully in support of the sending copies

of committee meeting minutes to affiliated branches. This useful method of communication will now be reintroduced.

Our Treasurer (and membership secretary) Len Grantham, has a new pretty powerful computer system. With this we shall be able to maintain much more information on the Association and the membership so as to provide a greatly enhanced information system.

I would point out to all members that the Association does not in any way offer by way of sale or gift its membership list. So although the members details are held on computer files, these details are wholly private within the Association.

Well that's about it for this time around. Your committee has got its work cut out, but nonetheless those matters that we have committed ourselves to, are fully achievable and **will all be of** great benefit to the membership of the AWGB.

*Tony Waddilove*

### ABERNETHY WOODTURNING Woodturning blanks & squares

Myford, Tyme  
Ashley Isles, Robert Sorby  
Henry Taylor

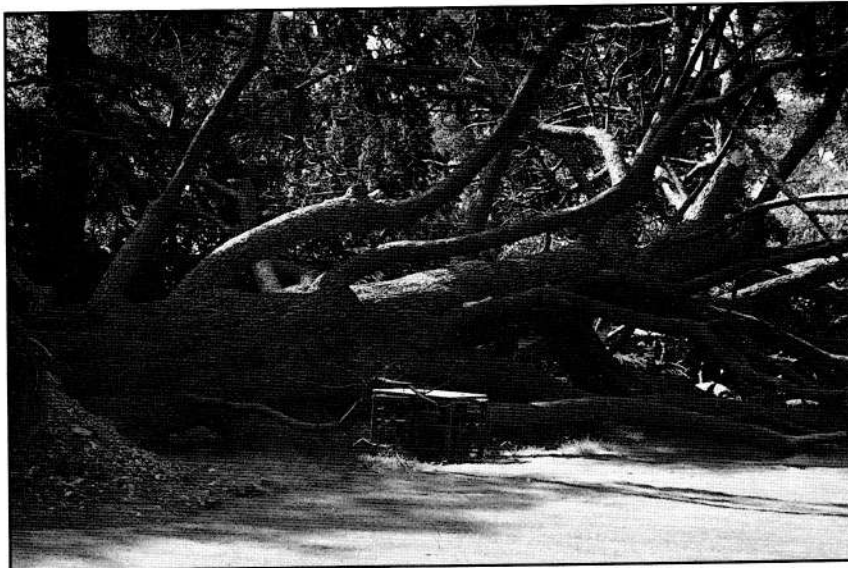
Gourdiemuir, Glanfoot, Abernethy  
Perthshire PH2 9LS

**Tel: 0738 85514**

# Tree Surgery

## There was this Tree !!

*By Mike Dennis*



In the grounds of a country house in Surrey a very large Cedar of Lebanon tree 'fell over'. During the 1987 storms it developed a lean until eventually in early June this year it finally gave up the ghost and keeled over. The tree was approximately 200 years old and the trunk measured a massive 5' in diameter. It was estimated that the tree weighed 30 tons and was about 150' tall. Middlesex Branch member Dave Reeks was offered this tree if he would just get rid of it at no cost. With the help of other members of the Middlesex Branch Mac Kemp, Frank Clarke, John Dolder and Tim Lawson and myself we set to on this mammoth task.

The first thing to decide was how to tackle this huge tree. Many of the smaller limbs and debris would have to be

cleared away first before starting to remove some of the larger limbs. We were not sure at this stage how we would tackle the main trunk.

Our main objective was to do the job safely and we talked through all of the hazards associated with cutting each of the larger limbs before starting to cut. If any of the

cutting had the slightest risk attached to it we made sure that only one of us was cutting at that time and with the use of ropes everything was secure and as safe as we could make it before cutting. Fortunately this worked out very well and no one was injured except for various blisters that we all suffered.

The lady of the house requested that any timber not wanted for woodturning be cut into logs for the fire. We decided, that as there was so much timber, any limbs less than 12" in diameter would be discarded. Surrounded by the aroma from the cedar, the sound of chainsaws hard at work, Dave Mac and myself started to cutting the limbs off into manageable sizes for the firewood pile. John and Frank



*Dave cutting away some of the smaller branches*

# Tree Surgery

were kept busy removing wheelbarrows full of logs from the site to the wood shed. I reckon she has enough wood there to last her a good few years. All of the small branches and the debris were thrown into the pit where the root ball had been pulled out of the ground and burnt. The idea being to burn the root ball away.

Because the tree had crashed down a lot of the timber had cracks in it and was useless as far as being usable for turning. Another problem we faced was that some of the limbs were pushed into the ground to a depth of 4' or more. This caused one or two problems during the work because it was holding the tree firm to the ground and not allowing us to remove some of these limbs. Two limbs near the top of tree were pushed into the ground at a 30 degree angle to each other and forming a sort of tripod. They were holding up a large portion of the top of tree as

can be seen in the photograph on your right. When Dave cut through the limb (as in the photograph) it did not move. We had expected for that limb to fall but the two limbs in the ground held it fast. There seemed to be no alternative but to cut through these two limbs. It was a potentially dangerous situation because if the limbs that were in the ground were cut off the tree could come crashing down on whoever was doing the cutting. After a lot of discussion we came up with a plan, that was as safe as we could make it. Dave Reeks cut these two limbs through but the again the branch did not move. We tied a rope around the top part and pulled, nothing happen. Dave realised it was being held by another branch on the other side and this would have to be cut off to release it. A rope was tied to the top of tree and Dave went in with his chainsaw we could not see him because he was hidden by the main trunk. The branch



*Mac watching Dave as he attempts to cut off one of the larger limbs*

started to move, we saw Dave's hand go up and assuming he was saying OK we pulled. As we pulled Dave was shot up into the air like a Jack in the Box. Fortunately he was not hurt. We later discovered he was trying to tell us to stop pulling, not OK.

Once all of the limbs had been cut off Tim Lawson bought his huge chainsaw in and cut the main trunk into 5' lengths. A Trekker saw was hired to slice the main trunk into 4 5 & 6 inch slices, each 5' long by 3' wide.

The whole job took 8 Sundays of really hard work to complete the removal of the whole tree, but it was an experience that will stay with us all for a very long time



*Dave and Tim deciding on how to tackle the trunk*

# Lecture

## Introduction

Muck Douma a Craftsman from Amsterdam came over to the Woodworker Show at Sandown last year. I took him over to the AWGB Stand and he joined the Association. He came to England again in November last year and saw my Exhibition at Deal Library in Kent. We have kept in touch, and he has asked me to forward the enclosed for possible publication in *Revolutions*. In his covering letter, he confirms that an Association has been formed, in Amsterdam with a founding group of 21 and a possible further 50 members when the constitution has been drawn up.

*John Hunnux*

### **Lecture by Muck Douma at Haastrecht in the Crafts Museum 5th February 1994**

'Looking back at ancient times, woodworking has developed enormously. I won't bore you with a detailed survey of the past, but would draw your attention to a few remarkable points.

The displacement of the stone axe by the iron axe and the adze, was an enormous stride forward in the development of woodworking. Not only was it timesaving, but the surface of the wood as it came out from under the adze, was fully accepted. The stride forward from trying-plane to planer-thicknesser has certainly been as important. But the finish from the

planer-thicknesser was never accepted. We have always gone on to use a planer or sandpaper for a finish. (I refer to carpentry and not to cabinet making).

When I restored our house, a few joints in the deckfloor had to be replaced. I had new joints, obviously machine surfaced. My carpenter asked me whether he should plane the joints by hand whetting the blade of his plane nicely convex so that it might look like real handicraft. Rather unwisely I said "Please - go ahead". Pure nonsense! If, at the time, pupil showed his teacher a joint or a board planed that way, the teacher would have said "please, first go and whet your blade nicely straight and plane that joint/board once again, because it should be quite smooth".

We try to be more antique than authentic. Craft is not a matter of old tools, or imitating (and exaggerating) their effects. Craft is a matter of the mind (of what we have between our ears as our coaches put it nowadays) and not of the tools.

One day a lady entered my shop to place an order. I showed her a specimen of of what I could offer. She praised my expertise, a super craftsman, so to speak - until she saw my workshop. Stunned, she called out "but you have nothing but machines!!" Forget about business! Annoyed, I asked myself whether I should have worked the wood with my teeth.

Craft is not looking back to the past. We must make progress. If the object you want to make can be machine made, so much the better. On condition that the machine does not enslave you, it should be your slave. Nowadays we place an electric motor on a woodturning lathe, preferably with an electronic revolution control and a modern precision chuck. That allows the turner to make the object exactly according to specification.

I have now told you what craft is not. But what is it? - Craft is the use of material to its limits in a process of creating beauty.

In this definition, no mention is made of what sort of tools one has to use.

It is possible to have different views on the qualification "beauty". But if material is used to the limits of its possibilities, here, if so required thick, there thinner, one is in the act of creating beauty. Such an object will, automatically, make a natural impression.

Woodturning is a craft in which this comes to life. An object for daily use will have to be more solid than an ornament. A rim of long grain cannot be turned too thin, a base should be thicker etc. In the Netherlands, the number of active professional woodturners is negligible. Against that background, those who are free from duty

## Lecture (cont'd)

and occupy themselves with woodturning - or any other craft for that matter are the bearers of that craft, no matter what they make.

That is what one should be proud of. There is no point in looking back lamenting that the past was so much better. No way - we must make progress.

Naturally there is an element of standardisation. The machine dictates the mass product.

You, who are free from routine duties, or may be enjoying early retirement, nowadays have the possibility of exercising a craft. But, in isolation, you will never find

out all the details. We must both learn and teach. That is why I invite you to form an association of woodturners, under the motto "two know more than one", making the craft a living factor in our lives - thinking not only of the makers, but also of the buyers.

I have seen that this is possible when visiting England. My wife and I visited the Woodworker Show in Esher in England. A three storey building housed a great number of woodworkers during five full days. Demonstrations everywhere, information exchanged. New tools on show and being discussed. Firms offering tools, materials, working

drawings, books and magazines. Colleges showing the products of their cabinet making students. A living, interesting atmosphere. Two gentlemen in the midst of the turmoil, discussing a woodturning problem - making drawings. And on the top floor, two halls full of products of these "duty-free" people, often showing extreme technical skill.

I have understood that in an atmosphere of open exchange of knowledge, crafts will flourish. In competition - and therefore in silence - we will remain of minor importance. In that spirit, I invite you, once again, to establish an association of woodturners.'

# 5th AWGB INTERNATIONAL WOODTURNING SEMINAR 1995 11th. to 13th. August 1995 Loughborough at Warwick

The 5th International Woodturning Seminar of the Association of Woodturners of Great Britain will be held at the new venue of the University of Warwick from 11th. to 13th. August 1995.

The AWGB has chosen the University of Warwick as the venue for the 1995 Seminar because it offers greatly improved facilities and accommodation.

The seminar will follow the now well established formula of interesting and stimulating demonstrations by a team of overseas and British woodturners of high renown. There will be some new faces and a welcome return of some old friends.

We hope, for the first time, to be able to offer accommodation to spouses and friends of delegates who may wish to accompany them to the seminar without attending any of the seminar activities.

Located in the heart of England, Warwickshire contains much attractive scenery and many towns of great historical and cultural interest. e.g.

Coventry (3 miles from the University); Kenilworth (2 miles); Warwick (7 miles);

Stratford-upon-Avon (18 miles);

Full details of the Seminar and application forms will be published in December 1994 or early 1995.

# Exhibition

*Livery Companies'*  
*Exhibition 1994*

## AWGB in 'City of London' Exhibition

For three days in July (12-14th) the City of London Guildhall was the venue for the 1994 Livery Companies' Exhibition. This most prestigious event, organised by the Livery Consultative Committee of the Corporation of London, was the second Livery Companies' exhibition to be held in the historic surrounds of the London Guildhall. The first event in 1989 was part of the celebrations marking the 800th Anniversary of the Lord Mayor.



*The Worshipful Company of Turners stand*



*Part of the  
AWGB contribution*

### **An historical background**

A Livery Company is composed of a number of people who joined together to represent a particular occupation of trade. They started life as "guilds" in mediaeval times when they played a vital role in the business and political life of London. The Livery Companies controlled standards and had a right to inspect and condemn inferior workmanship, thus protecting both their customer and their own craftsmen. Virtually all the Companies were in attendance at this exhibition, from the oldest to the newest. The Weavers is the oldest of the City Livery Companies, its existence having been recorded in 1130 and its earliest Charter given by Henry II in 1155. The Worshipful Company of Information Technologists is the 100th Livery Company, having been granted its Letters Patent just over two years ago on 28th May 1992.

**"The Worshipful Company of Turners"**, successor to the Guild of Turners, is 51st in order of precedence. It received its Royal Charter of Incorporation in 1604. The AWGB was asked by The Worshipful Company of Turners

# Exhibition



*Paul Coker demonstrating on the  
1837 'Holtzapfel' lathe*

showed amongst others, the work of the late Fred Howe. Fred was the founder member of the Society of Ornamental Turners, and items of his superb craftsmanship were purchased on his death by the Society from his widow. Another example of this art was an ivory chess set produced by Bill Jones. Also of great interest was the demonstration of ornamental turning performed on a Holtzapfel lathe dating from 1837.

## **A shining example**

Another demonstration of the Turners art was performed by The Worshipful Company of Pewterers. This company received its first Royal Charter from Edward IV in 1474, giving it control of pewter manufacture throughout England. The demonstration was showing the turning of cast pewter tankards on the lathe. Without the problems of grain to contend with as in wood, the tool action can go both "up and down." A remarkable point was the highly polished finish obtained straight from the tool, with wire wool

## **Continued cooperation**

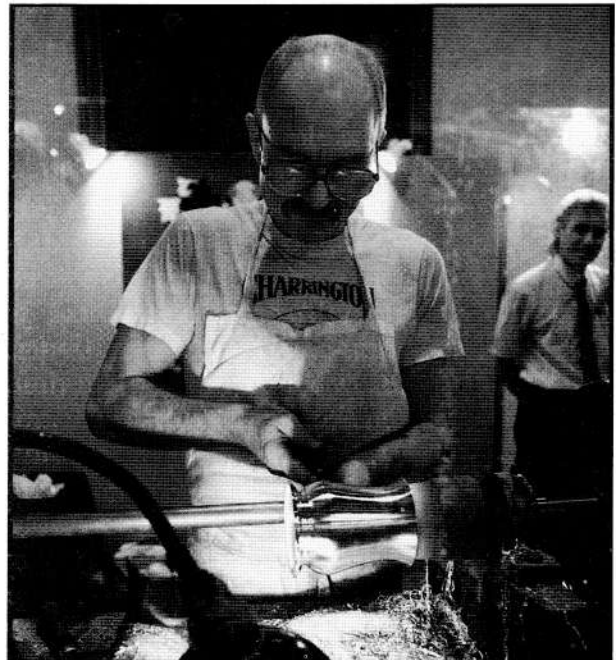
This exhibition represents the third time in just over twelve months that the AWGB and The Worshipful Company of Turners have cooperated together in promoting the craft of turning. This is a relationship which is of benefit to all members, be they either amateur or professional. The promotion and expansion of the "art" and the "craft" of turning, and lifting its image in the eyes of the public, is one of the prime objectives of all concerned.

*Eric Ditchfield*

to cooperate with them in displaying on their stand examples of the craft of turning. Their display was to show examples of both "plain" and "ornamental" turning.

## **The exhibits**

The AWGB, plain turning exhibit showed both spindle and faceplate work. The display was produced from a selection of work by:- Richard Bew, Bob Godbehere, Albert Harrison, Wilson Howie, Graham Lovett, Mike Morley, Stuart Mortimer, Gary Rance, Darrell Rushworth and Reg Sherwin. In contrast the ornamental display



*The Worshipful Company of  
Pewterers demonstrating the turning  
of cast tankards*

# Branch News

Since the AGM I have sent out a questionnaire to all branches regarding affiliation to the AWGB. I have had quite a good response and I would like to thank all branches that have replied so quickly. These branches are now covered by insurance and will be hearing from Hugh O'Neil (Secretary) shortly regarding this.

Many branches are holding postal ballots or holding an Extra - Ordinary General meeting to decide in which direction they wish to go so I am not in a position to give a full list of affiliated branches at present. Needless to say many new branches are being formed and I have been busy in addressing these in recent weeks. I will give a full list of branches and addresses of their secretaries in the next newsletter.

The video library has now been expanded thanks to donations of videos from Chris Stott and Ray Key. The full list is as follows:

**Richard Raffan**

Turning Wood  
Turning Projects

**Del Stubbs**

Bowl Turning

**John Jordan**

Hollow Turning  
Bowl Turning

**Chris Stott**

Cutting and Sharpening  
Turning Bowls  
Turning Boxes

**Ray Key**

The Basic Box  
The Capsule Box  
The Final Box

Please send two cheques, one for five pounds for one week's hire and one for thirty pounds which will be returned when the video is received back at the address below.

K.J. Allen, 90 Peakes Road,  
Etching Hill, Rugeley,  
Staffordshire. WS15 2LX

Keep doing a good turn

*Ken Allen*

*(Branch Co-Ordinator)*

## Worcester Branch

AN EXPERIENCE IN WOOD.  
This was the title of an exhibition organised by the Worcestershire Woodturners at the Droitwich Spa Heritage

Centre recently. Opening on the 31st March it ran for six weeks drawing a total of 3662 visitors, with over 300 exhibits produced by 30 members of the club making a very impressive display. Many of the items were for sale and during the six week period some £1200 worth of turning was sold.

The range of work was vast varying from lace bobbins and micro-miniature goblets to spinning wheels and large bowls. A Premier 15-90 lathe, kindly loaned by Poolewood, was set up in the exhibition room and demonstrated at times - for safety reasons only when two members were present. A rota ensured that at least one member was always present at the exhibition to talk to visitors and to provide security. Professional demonstrations were given by Reg Sherwin on three occasions in a nearby hall. Part of the exhibition room was given over to local members of the British



# Branch News

Woodcarving Association who also provided a superb display.

The club is very grateful to the Heritage Centre for providing for a second time in two years such an excellent venue to display our talents.

## Thameside Branch.



Stimulating interest in the activities of a Branch and sustaining participation in competitions and exhibitions can be a continual dilemma for any Branch Committee.

In April this year we thought we had eventually solved the problem when we organised a competition for our members to make a goblet given only two instructions, 'diameter to be 60.0mm  $\pm$  5.0mm and the height should be 130.0 mm  $\pm$  5.0mm.'

Then we came back down to earth with a bang.

There in a back issues of the Woodturning Magazine we came across an article by Ken Allen, our National Branch Co-ordinator, on the subject of 'Starting a Branch' and in the middle of the article was his highlighted quote "Most clubs organise competitions and these I believe are the



best stimulant for improving standards". We thought we were being so original, but, as the saying goes "There are no new original thoughts, or ideas, only adaptations of previous ones" (*Perhaps we will find in the next issue a letter from a member giving the correct version of the above quotation, but it will not alter the sentiment*). The surprising thing was that we had discussed this idea, as a committee and with branch members, and nobody had commented on the article, especially since it was only in the March issue of this year that it had been published. This is not a reflection on Ken's journalistic impact, but more perhaps, a failure on our part to take in what we read.

However, we pressed on with the competition and were very glad we did since the results took us by surprise. The response was excellent, with a surprising number of variations in form. Some members were so keen they

produced their exhibits a month before the required date.

Judging was not easy. We prepared a ten point checklist and chose the two judges, but realised afterwards that an odd number of adjudicators would have cut down on the deliberation time.

The most unpleasant task of the judging was to eliminate some of the very good work which was outside the sizes specified, in spite of, as we believed, having been given extremely generous tolerances.

Once all the judging parameters had been satisfied the final result hinged on what were purely personal preferences.

Somebody, somewhere, must have already written a guide book on 'How to judge competitions AND retain your friends'.

# Branch News (Cont'd)

Our thanks to all those members who took part in the competition and hopefully the others will be encouraged to try next time. It has also provided the Committee with a topic for a future Branch meeting viz. 'How to interpret Competition Rules and avoid failure'.

The photograph shows a sample of those entries accepted for final judging.

It was apparent from some of the comments made after the judging that many of our members prefer to be given a definite project, or firm directive as to what to produce. Preferably, as in this case, in the form of a competition. I am sure they surprise themselves more than anybody else when they find out what they are capable of doing, and how acceptable other people find their work

that the organisers ought to get more competition.

Members were treated to a fascinating talk in July by Geoffrey Brandon the President of the Ornamental Woodturners on the use of the many jigs and gadgets that they use.

## East Surrey Branch

Following Dave Grainger's letter in issue 29 of *Revolutions*, he has succeeded in forming an active branch of the Association in the Croydon area.

The name of the branch is the East Surrey Woodturners, and we meet on the last Wednesday of every month at 8:00 pm in the Edgcombe Community Centre in Selsdon. If anyone wishes to join us we would be delighted to welcome them.

For directions, either telephone me (081-395 7734) or Dave Grainger (081 457 1895).

### Topics at meetings:

June Demonstration of specialist tools.

July Dying and finishing.

August Demonstration of RS2000.

Exhibitions and demonstrations to the public:

29 August

St John's Church Fair

10 September

Selsdon Country & Woodland Show

## North London Branch



A new branch which held its inaugural meeting on April 14th. It is now up and running with a membership of 25. Regular meetings are held on the third Thursday of each month. Interest in this branch has been shown from members coming from Pinner to Chingford and from Central London to Barnet. Meetings are held in members' homes for the time being. For more information contact Robert Craig 55 Woodside Park Road, Finchley, London. N12 8RX Tel 081 446 0679

## Middlesex Branch



Middlesex enjoyed their best ever County show in June. 20 members submitted some 550 items for the stand. The total value of goods was in excess of £6000 and £2340 worth were sold. For the fifth year running the cup for the best stand in the marquee was won and they have now been told to keep it and would they mind not entering the competition next year. Middlesex reply to this was

## Avon & Bristol Branch



The branch seems to be expanding as the months go by and a full programme of events has been planned for the rest of the year. Each month a competition is held and points are awarded towards a championship.

August 18th is a members evening

September 15th. Learn how to photography those masterpieces that you have meticulously made.

October is a talk by Friends of the Earth.

For more information contact  
Chris Lindup 0272 325477

### Kent Branch



The Kent Branch are delighted to announce that Diana Cheney has been awarded Honorary Life Membership of the Branch.

The branch continues to thrive with some interesting activities. In August a competition entitled 'A Seaside Theme' will be the subject of the evening with members judging the event for themselves.

Chris Pye, who turns and carves will be demonstrating at the September meeting.

For more information contact  
Mrs Diana Cheney  
0303 249005

**Deadline  
for copy  
for the  
next issue  
of  
Revolutions  
October 15th**



# Turn East 94

## The 2nd East of England Woodturning Seminar

at

Fakenham High School

Fakenham Norfolk

13th August 1994

Demonstrators include

Melvyn Firmanger

Ray Jones

Ray Key

Bert Marsh

Keith Rowley

plus

Trade Stands

Admission will be by ticket only

£25.00 includes a buffet lunch

Early application is recommended for the  
limited number of tickets available

Application forms available from  
Mr Bernard Rose, 63 Belmore Road,  
Thorpe St. Andrew, Norwich, NR7 OPR

# Letters

TO THE EDITOR

## From Ed Brain - Cheshire

In response to your article on Insurance in Revolutions 29 I must say that I agree with you totally. As a manager in a company I am fully aware of the potential problems of lack of adequate cover. From a personal point of view as a hobby woodturner before I even start to think of demonstrating I did what every person should do and that was to list all the equipment and related items connected to my hobby and then with the aid of current catalogues calculated what it would cost to replace them in the event of theft etc. My collection of many years would literally cost several thousands of pounds.

When the Association first arranged the insurance cover I was delighted, but as I run my hobby on a very limited self financing budget, even though the premium was extremely competitive, I found that I could not afford it at that time, so I wrote to the insurance company to ask if they could arrange, as with many other policies that I have, to pay the premium by monthly instalments, even if a slight increase was necessary to cover extra administration costs. This they flatly refused.

I am sure that, as many of our members are hobby woodturners and in a similar position to me, this probably explains the low uptake of the policy, but would likely to be attracted to an instalment system. I hope that you manage to rearrange the insurance and if you could possibly arrange my suggestion I for one would immediately take up the cover.

## From Melvyn Firmanger - Somerset

I would like to express a much belated show of appreciation to the organisers of the '93 Loughborough Seminar. The support I received a demonstrator was second to none. Nothing went wrong but if it had of done I had every confidence it would have been put right quickly and with no fuss.

Personal attention to detail and efficiency coupled with good humour was constant. Whilst it may seem unfair to mention names (no it isn't) Don White and Ken Allen were always there to be of assistance before I needed it!. Are these guys psychic?

We were told in advance not to run overtime. Yet I know I talk too much, but they were there yet again turning the lights out on me. Hey you guys just wait for the day I'm your helper!.

I have seen both sides of a number of seminars now - delegate and demonstrator. This one has to be the best. There was even a letter of thank received a few days after the event from Tony Waddilove. Thats a nice touch.

I have just read with considerable disappointment and alarm that because of lack of interest - the AWGB Insurance Scheme is to be cancelled. I find it quite extraordinary that there has not been 100% take up of

## BRIDPORT SMOCK COMPANY LTD.

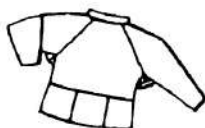
SMOCKS ALL SHAPES AND SIZES.  
WOODWORKING, GARDENING, PAINTING ETC.  
EXCITING COLOURS

*For Details and swatches*

*Phone or write to:*

**B.S.C. LTD.,**

198, GERRARDS GREEN.  
BEAMINSTER.  
DORSET. DT8 3ED  
Telephone: 0308 863691



## Letters (Cont'd)

this scheme. It is so cheap and to have cover so important, especially with today's attitude to claim for everything. Does anyone realise that it only takes a visitor to trip up entering your workshop and hurt themselves for you to be liable. Even someone entering any part of your property/land with the intent of visiting 'the woodturner' may not be covered by household insurance. You could be taken to the cleaners, out on the streets, with nowhere to live if the worse came to the worst. If a new scheme is presented I do implore everyone to seriously consider it. In fact why not write to Hugh O'Neill now expressing commitment?!

### From The Guide Dogs for the Blind



Thank you very much for your extremely generous donation of £823-60 towards our work being monies raised by your Association through the sale of turned wood pieces at the "Practical Woodworking Show" held at Wembley recently.

This thoughtful support of our work is deeply appreciated and it gives me much pleasure to enclose our official receipt, together with my very real and warm gratitude to everyone concerned not only for their tremendous contribution but

also for the keen interest it expresses in our endeavours on behalf of the blind community.

I am sure you will be delighted to learn that your gift is sufficient to fund the breeding of a guide dog puppy and to support it through its puppy-walking stages and as a tangible token of appreciation, I will be asking my Regional Fund-Raising Manager to contact you to make arrangements for you to receive a framed and inscribed photograph of one of our puppies.

With my renewed thanks for your valued support and my very best wishes.

### Contact with the Secretary of the AWGB

I hope that I am up to date on all correspondence. Sorry! there have been some upsets while the house was stood on its head for redecoration prior to selling. The painting and papering is now finished; the house near sold; and I have been through all draws, boxes and cases looking for unanswered enquiries

There is, however, a problem in the near future. Some time in July we will be leaving the Middlesex address and for a period of two or so months living in B & Bs (if and when we find some in this area).

From the end of September we will be at Myttons Cottage, Boraston, Tenbury Wells, Worcestershire WR15 8LH - our retirement home!

In the meantime contact will be difficult. Probably the safest for urgent messages, is to drop a line to the Editor of *Revolutions* as we meet regularly and he can pass on mail etc.

One outstanding item is the request from Branch Secretaries for supplies of membership application forms. These are currently being redesigned and printed and will be available through Ken Allen (Branch Co-ordinator) shortly.