



Woodturners

# Revolutions

Issue No 29

March 1994

Newsletter of The Association of Woodturners of Great Britain

## PROGRESS - POSITIVE

**Now there's a strange title I can hear some of you say in view of some of the ramifications of the past year or two. My view is that despite these there have been many positive things happening to and within the AWGB. Before going on to highlight some of these I would just like to put a few personal thoughts forward on what's been going on.**

As the person who was the catalyst for the formation of this Association and its first Chairman and President, you can imagine I have been much saddened by much that has been happening. However, that said I guess it was almost bound to happen, this is still a young organisation merging from its infancy and entering adolescence, always a troublesome time.

Some change is inevitable as an organisation grows, the aspirations and demands of its members also grow and change, we are all aware of this. That said, at the end of the day, it is seldom that massive radical change is ever needed.

Now to the positive, there can never have been a better time in history to take up woodturning as a hobby, as a full time living I think not, its tough out there, despite the perceived success of some.

The hobby growth of

woodturning has been going on since the late sixties but really gathered pace in the late seventies and early eighties, there seems little sign it's on the wane. From the mid eighties to the present day we have seen perhaps the greatest growth in all things woodturning. The AWGB can not claim direct responsibility for some that has happened, but feel sure it may have helped massage the thought process that brought some things forth, such as the Craft Supplies Seminars, the NEC National Woodturning Show organised by Practical Wood Working and the GMC 'Woodturning' magazine, we have been involved with both of the latter from the beginning.

With hand on heart it can be said there is much that we are directly responsible for, we have been able to provide opportunities and do good for so many through our activities, many could not

have been dreamed of when we started.

We formed back at the Loughborough Seminar of 1987, this has now become a bi-annual event, some members I have heard feel we put too much store by this event. I will say this much, a great deal of what happens around this country in woodturning is fuelled by these Seminars, you may not realise this if you don't attend, but members go back to their BRANCHES and share what have seen and learnt, others go back to their workshops and develop ideas and techniques they have observed, its about ideas brought to you by leading woodturners from around the world.

Did I mention BRANCHES, most if these have been set up by the direct result of the formation of the AWGB, I know there were some woodturning groups in being prior to 1987, and others have been formed since with no

## Position - Positive (cont'd)

help from us, but I repeat the vast majority owe their formation to the AWGB.

Over the years at least nine Branches have had AWGB committee members as the catalyst person directly responsible for their formation, others have been set up through members meeting at the Seminars.

The vast majority have been set up by members wishing to have communication and contact with like minded people, most have been helped by the AWGB starter pack which gives ideas and advice on how to go about things, Ken Allen our Branch Co-Ordinator tells us he has sent 30 of these out just in the last few months alone. The contact with like minded souls brings much faster development and enjoyment than can ever be achieved in your garage or shed working in isolation. Regular meeting, lectures, demonstrations, mini seminars, exhibitions, group visits to shows, suppliers, timber yards etc., are all activities that give a fuller and richer understanding and interest.

For the Branches the AWGB has provided over the years Demonstrator lists, Interest free loans, Grant assistance for Demonstrators, Branch area mailing list of AWGB members, AWGB Signs, Overhead Mirrors, Exhibition display equipment, opportunity for some members to have their work displayed at the National Woodworking Exhibition.

Those opted in Branches under the new constitution can look forward to even more benefits such as insurance cover, and I am sure there will be more.

What else does the AWGB have to offer:

A very good VIDEO LIBRARY, members can hire a video for a small fee.

40 SET SLIDE PACKS of SELECTED work from the 1989, 1991, 1993 Loughborough Seminars.

60 plus SLIDE PACK OF the AWGB 1990 Hay on Wye Exhibition.

Members WORKSHOP INSURANCE SCHEME:

MOULTHROP STYLE LATHE PLANS:

'REVOLUTIONS' News letter

LATHE LOAN Scheme

There have been others like Trophy provision, Free Membership prizes, Member Badges, AWGB T' shirts etc.

Stands at PRACTICAL WOOD WORKING SHOW, Wembley, WOODWORKER SHOW, Sandown, WOOD-TURNING SHOW, NEC, Birmingham, we are invited to these shows and always mount a good display of work, recruit members, dispense information, point people in the direction of their nearest Branch etc, etc.

All the above are excellent reasons for joining the AWGB and the question most asked is what will 'I' the individual will get out of it, the forgoing gives just a few of the answers. What I would like to hear said more is what can I contribute.

Many members do and have contributed wonderfully over the years to our calls for support, the most indictable is the donation of work for sale on behalf of charities. Members efforts have allowed us to contribute over £2000. to The Woodland Trust from our Goblets theme, and the Bowl theme raised over £2500. for the Sue Ryder charity. That's what I call contributing.

I headed this piece Progress - Positive despite the goings on, I will highlight just a few things from the last troubled twelve months.

**'REVOLUTIONS':** has made tremendous steps in the right direction with new Editor Mike Dennis at the helm, he has been under tremendous pressure on deadlines at times (the spelling suffered in the last issue, sorry Mike). We have invested in new equipment to produce it, and it shows.

**LOUGHBOROUGH SEMINAR 1993:** there are those who think it the best yet. The note I got from the wonderful Bill Jones is a treasure, he finished by saying "I haven't enjoyed a show as good as that -- ever".

## Position - Positive (cont'd)

**LATHE LOAN:** we only have one at this time and is loaned usually for twelve months to young people, if you saw Reg Sherwins article in April edition of 'Woodturning' you can see what a success this can be, 12 year old Andrew Tiller has had a wonderful experience. The next twelve months will see it placed with a disabled lady.

**BRANCHES:** One Branch wrote just the other day saying how pleased they were with the number of referrals to them from the AWGB stands at the Woodworking shows.

Gordon Clarke was urged by his Cornwall Branch members

to enter a piece of his work into the NEC Woodturning Competition, he won a £250. prize, the AWGB Publics Choice Trophy, sold the piece for several hundred pounds and took two commissions for similar.

**VIDEO'S:** Chris Stott & Ray Key have both donated sets.

**CHARITY:** Despite the short notice members responded well and we were able to raise over £800. for The Guide Dogs for the Blind, at Wembley.

None of these things would have happened if the AWGB hadn't been formed, these

are just a number of the positive things I am aware of, there are others.

This NATIONAL organisation was set up for the good of WOODTURNING, if you had your doubt's I hope the above dispels them.

**The time has come for the bickering to stop, for you to renew your subscription, to pull together, and get behind and support your Committee.**

RAY KEY  
(AWGB Vice Chairman)

### Viscount Woodcrafts Ltd

The new centre for Woodturners and Craft Supplies  
LATHES, PLANERS, BANDSAWS, SCROLL SAWS, MORTISERS, POWER TOOLS  
LARGE SELECTION OF BOOKS ON ALL ASPECTS OF WOODWORKING

Turning and Craving tools by SORBY  
Dove tail jigs and cutters by Titan  
Diamond Swiss sharpening whetstones  
Machines by Inca, Sheppach, Multico, Trend, Tyme, Ryobi and Warco  
also lathe copy attachments. Multistar Chucks  
Turning blanks, sealers, polishes

#### SPECIAL NOW IN STOCK

Ryobi Cordless drill cased at only £49.50  
Wood Turning smocks -- Robot Chucks and screw chucks

\*\* SOLO 6 wood turning lathe 38" cent 17" dia over bed, complete with stand, short and long rest, screw and cup chuck, faceplate, drill chuck also revolving centre.

Full length COPY ATTACHMENT  
LATHE £450 COPY UNIT £300 or TOGETHER at £600

OPEN 9 to 5.30 weekdays and 4pm Sat  
3 to 5 Brackley Road TOWCESTER, NOTHANTS 0327 358510



# Insurance

## NEXT TIME I'LL BE COVERED!

*By Hugh O'Neill*

It was a rural industries fair, and a sizeable group were standing in front of the lathe on which I was demonstrating bowl turning. The Elm blank had a bark inclusion, so I gave it a squib of Superglue, but also angled the lathe so that the line of flight would miss the crowd - just in case!

The bowl finished, was passed round the group, while I mounted the next blank - a nice clean piece of Yew. Halfway through - with absolutely no warning - there was a bang and a piece of the blank whistled past my right ear. The main block went forward and put a five inch dent in heavy duty corrugated iron. Thank God I had not moved the lathe back to face the audience. One death, at least, would have been a certainty.

Under no circumstance will I now demonstrate in public (or at a club meeting) without £1 million third party liability cover.

It was incidents such as that that first prompted the Committee to negotiate an insurance policy for members. It was a good policy and many who

switched to it found it considerably cheaper than their previous policies. Unfortunately so few members have taken it up that the brokers have now told us that they will not be renewing cover once your current year expires. They say that in future each member will have to negotiate their own policy and the cost will be approx £250.

I am therefore, frantically trying to arrange a new all risks policy for members and will let you know what can be provided.

The Association is to provide all affiliated Branches with Third Party Liability cover. This will provide cover for injuries to third parties at any event organised by or attended on behalf of the Branch. IT WILL NOT cover individual members doing their own thing, or demonstrating in public on their own behalf. Nor will it cover stock, machinery, equipment or exhibits.

Under the new Constitution, an affiliated Branch is one with 100% AWGB membership. To these the Association will provide free insurance under this policy. Other woodturning groups/clubs may also apply to the Association to be covered by this policy but there will be a charge of £110 per group/club.

Any woodturner who ever uses their lathe in public, or who even takes friends into their workshop are "barmy" if they do not have clearly specified Third Party/Public Liability cover. It is extremely unlikely that their ordinary household policy provides any cover at all. In fact the household policy may not even cover the tools and equipment in their workshop - and today so much walks from back garden workshops.

A good, specially written, "all risks" policy will cover tools, equipment, stocks, and finished work sent to competitions and exhibitions. It will also have a Third Party liability element for £1m cover (and this should be regarded as the minimum).

This was the basis of the old member policy and is what we are trying to rearrange. If and when we do full details will be given in *Revolutions*. To clear up some past misconceptions, individual members will not be covered by a Branch policy other than when performing officially at a Branch organised or sponsored event. Sorry! - It is not one Or the other - but BOTH!

# Editorial

This edition is shorter than I would have like due the lack of material submitted from members. There was also a lack of photographs for this issue. This is your newsletter and it can only succeed if members are willing to pass on to others skills and tips they may have. On the subject of articles - if you do write an article for inclusion in *Revolutions*, bear in mind that your reader may be less knowledgeable than you and may need additional technical information. For example 'the piece of wood was fitted to the chuck' What type of chuck? What method of holding? What type of wood was it? Was it fitted cross or end grain? etc.

This edition has been delayed by a couple of weeks to allow the Annual General meeting information to be sent with it. I hope to meet many members at the AGM.

As *Revolutions* editor I get a lot of Branch newsletters sent to me. These newsletters in the main give information that is local to its audience and not always of interest to other members the other side of the country. What I have found though is that a number of Branches are providing their members with some very interesting and unusual topics and events.

Mike Dennis

## Paying subscriptions through your branch

At the Committee meeting held on Sunday 13th March 1994 the Committee discussed a complaint that some individual members feel that they are being discriminated against. Because they are not able to pay through a branch they are having to pay £1.00 more than members who are able to pay through a branch.

To clarify the situation the Constitution says 'Affiliated branches may choose to collect a combined subscription to cover both the Branch and AWGB subscriptions. Branches choosing to undertake this shall receive an AWGB discount to be set annually through the AGM, per member'

This is not a discount to members but a reimbursement to the branch for the administrative work that they will be undertaking as an affiliated branch

## Contents

Progress - Positive	1
Insurance	4
Editorial	5
Chairmans report	6
Norfolk Seminar	7
Branch News	8
Letters to the Editor	10
Equipment	13
Advertisements	14
Gallery	16

*Articles letters, tips etc contained in this newsletter do not necessarily carry the endorsement of the AWGB*

### Chairman

Tony Waddilove  
11 St Johns Court  
London Street  
Swaffham,  
Norfolk  
PE37 7DB

### Treasurer

Len Grantham  
Spindles, Cooper Close  
Poplar Farm  
Nettleham  
Lincolnshire  
LN22XX  
0522 595660

### Secretary

Hugh O'Neill  
5 Kent Gardens  
Eastcote, Ruislip  
Middlesex  
HA4 8RX

### Editor

Mike Dennis  
72 Hawes Close  
Northwood  
Middlesex  
HA6 1EW  
0923 829844

# Chairmans report

---

Well here we go with my next report to the members. In fact this is likely to be my last report as I have decided to step down from the Chairmans chair at the forthcoming AGM. I have occupied this position for 2 1/2 years. Given that the recent members ballot set the future course of the AWGB, I feel that it is time for a new face to steer the new path.

The past year in particular, has cost me and one or two other committee members a great deal of time, not begrudged even though the work could have been more efficiently carried out and have saved me vast amounts of time, if the AWGB members had been prepared to allow this. The members at the AGM 1993 however deemed this out of order. The work of the Chairman is essentially administration, though this is not necessarily as it should be. I trust that the new Chairman will be given all the help and support that he/she requires.

In my note to you in January I said that I would let you know the reason for the short notice regarding the Guide Dogs For The Blind event at Wembley. At the committee meeting held on 28th November the charity was agreed. Now there should have been a notice in the immediately following REVOLUTIONS. However, there was a misunderstanding or a lack of communication. At the end

of the day 'the buck stops here' therefore my responsibility. If nothing else it shows me beyond any question that the management of the AWGB needs to change from the present. I have never thought that committee meetings are the only place or time where decisions are taken and implemented.

I am pleased to say the amount raised for the charity was £823.60 which given the short notice is a good effort by all those involved. Thank you for your contributions.

I trust you have all received the postal ballot result. I am aware that a few of you will not accept it, however I do think that we all should take a broad and constructive view and build an even better Association.

By the way I would impress upon you that the ballot result was from the members that voted. I have had the odd few comments that where the result was not to an individual's or sub-branch's liking that I had failed to deliver as required. Those few that have taken this view have been treated with suitable contempt.

The committee held a meeting on the 28th November 1993. The main

topic was of course the ballot. The committee discussed the Constitution Working Party proposal and after much consideration decided to issue an alternative being the 'committee' proposal. I was involved in both discussion 'groups' and I believe the members were offered the best alternatives available. Unfortunately the minutes for this meeting have gone missing, so Branches, don't expect copies.

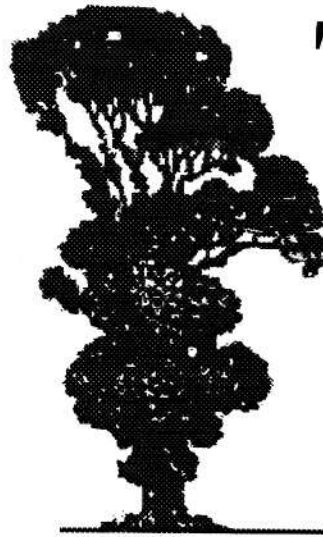
In view of the changes in the make up of the AWGB Executive Committee, and given the number of people due for re-election or otherwise standing down, it has been decided that in effect all committee positions available for full membership election are open to all. It is probable that some of the present committee will restand for re-election. However, I am hoping that a sufficient number of you will stand. Please note however that the co-opted members of the committee remain for so long as they wish or are needed by the committee proper.

Given the course that the AWGB is now set to follow, the committee should in my view undertake one major task before all others. It must define and document what the AWGB does for or provides to both the members and the branches. Now you MUST remember that the AWGB at times is all things to all people. However this subject will I trust, be taken up by the new committee when it is installed at the AGM.

As many of you may have noticed, I have been the main contributor for the past 15 months to the AWGB in WOODTURNING magazine. That I have been the main contributor is due solely to the lack of response from you the members. I have on more than one occasion in the past asked for some of you to come forward and volunteer to write 'the page'. To date, ONE volunteer and a few pressed men (but only a few). As the magazine is now 10 issues a year and given the foregoing, the AWGB is now to share the page on a month and month about basis with the American Woodturning Association, as neither body has sufficient volunteers. Nonetheless we still need members to write. Therefore if you feel so inclined, drop me a line (and suggest a subject) and I will give you details as to what to do.

With this my final piece to you for some time, I would like to thank all those committee members that have acted in a responsible and helpful way. Without them I would have quit long ago, also my thanks to all the many members and branches that have worked for the benefit of the AWGB and therefore for the membership as a whole.

*Tony Waddilove*



# Turn East 94

## The 2nd East of England Woodturning Seminar

at

Fakenham High School  
Fakenham, Norfolk

### Demonstrators include

Ray Jones

Ray Key

Keith Rowley

plus

Trade Stands

Admission will be by ticket only  
£25.00 includes a buffet lunch

Early application is recommended for the  
limited number of tickets available

Application forms available from  
Mr Bernard Rose, 63 Belmore Road,  
Thorpe St. Andrew, Norwich, NR7 0PR



# Branch News

## High Peak

A successful meeting in December took the form of a buffet meal with a competition of 'a matching pair' judged by Alan Holtham.

At our first meeting of the New Year on 7th January, Gordon Warr gave a most interesting talk, much of it featuring the time when he was a production turner and for good measure gave us some useful tips. Gordons expertise and wide knowledge of wood working in general and wood turning in particular were much appreciated by members.

Meetings are held on the last Friday in every month at the Civic Hall, Hazel Grove and the following programme has been arranged until August.

**8th April** AGM

**6th May** Reg Slack - Demonstration

**3rd June** A 'hands on'

evening

**1st July** Jamie Walwyn - Demonstration

**5th August** J a m e s Davenport - Timber Conversion

On 20th March a full days seminar with Keith Rowley will be held at the Civic Hall, Hazel Grove.

## Worcestershire

The Worcestershire woodturners have voted to comply with the new 100% membership requirement of the AWGB affiliation.

We have not yet decided on a club title, this being one of the decisions which will be taken soon, but the Secretary is Walter Jarvis, 8 The Furrows, Stoke Heath, Bromsgrove, Worcestershire. B60 3QX

Reg Sherwin was asked to be a committee member but declined due to the lack of

time. Guess who is now their president.

The club has its second show coming up soon, 'An experience in Wood'. It is the second combined show which has been put on with a local group of woodcarvers. The dates are 31st March to 12th May inclusive and the show is being hosted by Droitwich Spa Heritage Centre. Reg Sherwin will be doing two demonstrations during the show, Friday 6th May 7.00 - 9.00pm, and Saturday 7th May 10.00am - 12.30pm and 1.30pm - 4.00pm. Admission to either event is free, but seating is limited for the Demo's so interested parties should book a place by ringing the Centre on 0905 774312

## Wealden

Kevin Hutson was the demonstrator for the January meeting. Kevin was featured recently in 'Woodturning' magazine. On March 20th Neil Jarvis of the Turning Point, a large local turning supply shop will be demonstrating.

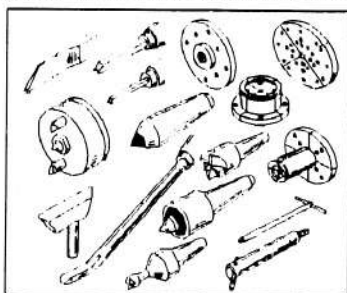
The club itself is still growing, after 2 years the membership stands at 24 members. A lathe is being purchased for the club. If anyone is interested in joining please contact Trevor Booth the Secretary by phoning Burwash (0435) 882533. Meetings are held on the third Sunday of every month at the George Hotel, Battle, East Sussex

### Bob Chapman

### WOODTURNING ACCESSORIES

INNOVATIVE TURNING AND WORK HOLDING PRODUCTS  
DESIGNED BY PROFESSIONAL WOODTURNER

INCLUDING:  
DOVETAILED  
EXPANDING  
PINJAWS  
HSS BEADING  
TOOLS ANGLE  
BOWL GOUGE  
LIGHT PULL  
DRIVER  
AND MANY  
OTHER ITEMS



ALSO STOCKISTS  
OF SANDING AND  
FINISHING  
PRODUCTS  
INCLUDING VSM  
ABRASIVE FROM  
£2.05 PER METRE

TEST REPORTS FEATURED IN ISSUE 25 OF REVOLUTIONS AND  
ISSUES 11 & 12 OF WOODTURNING MAGAZINE

FOR FULLY ILLUSTRATED CATALOGUE SEND 9" X 6" SAE  
AND 70p IN STAMPS TO:

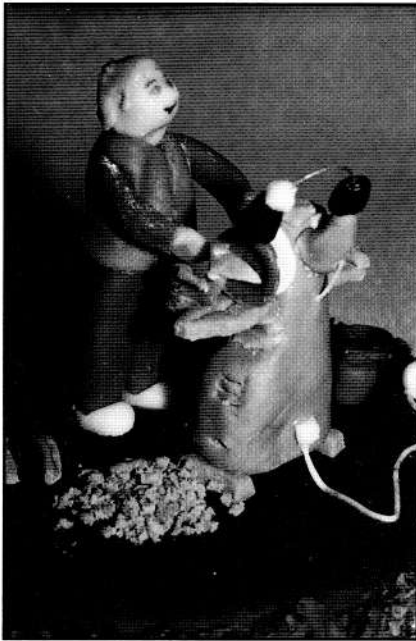
BCWA 93 PARKWAY, COXHEATH, MAIDSTONE, KENT ME17 4EX  
TEL: 0622 747325



# Branch News

## Thameside

The December meeting took the form of a social evening. The raffle prize was a cake, made by Mrs Sue Twitchen, decorated with what must be the only edible Shortbed Graduate and Woodturner. This raised £50 for the 'Children in Need Appeal'



## Cumbria

Cumbria meetings are normally held on the third Saturday of each month at different venues. Members are encouraged to sell goods at these meetings, with 10% of the proceeds going to club funds.

Add to the demonstrations, visits to timber suppliers and machinery manufacturers, mix in an increasing stock of videos, hold sessions on tool handling, safety equipment, members projects, etc and you may find ideas to keep



your group turning.

To progress, groups need input from current and new members. If you live in the Cumbria area why not join us

## Middlesex

Middlesex have set their programme for the coming year. In January members were given a demonstration by Dave Reeks on turning green. February was the Annual General meeting where the members accepted the new AWGB constitution and amended their own to fall in line. George White with the help of some 70+ slides and numerous jigs showed how he made his King Edward's Crown. Future events include :-

April 14th Critique of members work.

May 12th Demonstration by Ray Jones

June 9th A talk by Sorby Tools.

## Devon

Three exhibitions at the

Armada Centre are planned

28th March - 2nd April

19th - 24th September

5th - 10th December

An exhibition at the School of Architecture will be held on 23rd May - 3rd June by kind permission of Prof. Gail

The April meeting will be 'Utilisation of materials' and for June a Pole Lathe demonstration.

## Herts & Beds

The Branch Committee is reviewing its policy regarding membership following the recent ballot on the AWGB structure. In the past non-members of the AWGB have been allowed to join us and participate in previous activities. As we now understand the situation, however, to remain affiliated to the AWGB all of our members must also be AWGB members. The majority of our new members in the past 'discovered' us by attending various woodworking shows and by being referred to us following a visit to the AWGB stand. Should we continue our present policy it is believed we would lose this valuable source of introduction as we would be no longer affiliated to the AWGB. Which in turn could lead to the closure of this branch as membership falls off. We therefore propose to look for 100% membership of the AWGB amongst our group.



**From Patrick Blake -  
Norfolk**

After reading the letters in the past two editions of *REVOLUTIONS* discussing my winning entry in the AWGB competition, I feel I should re-dress the balance by replying.

The main issue seems to be a suggestion that design was not a consideration when judging my entry. I would like to point out that important as it is, shape is not the only element of design and shape itself may be influenced by other factors such as the limitations of the medium used. Other important considerations may also include, exploiting the medium in innovative

ways, both technically and aesthetically and the efficiency of the finished item for which it was made, in this case a table lamp which performs very well. In addition, the *Practical Wood Working Magazine*, which featured my lamps in their Editor's comments, December edition and in detail in the January 1994 edition, commented on the high standard and quality of the exhibits shown.

Secondly, whilst it has also been stated that my lamps do little to advance the public recognition of woodturning, when the *Practical Wood Working Magazine* and the AWGB arranged a public vote at the National Woodturning Show for the best entry in the woodturning competition, my lamp came a close second, so who better then to ask than the general public themselves!

The last point which I would like to take issue with, is the

comment that nothing should be made from wood that was originally made from some other medium. I believe it would so woodturning immense harm to be shackled by such restraints. I also fail to see the distinction between George White's coffee set, my lamps and the many platters, goblets, vases, candlesticks and other items that have all been made for centuries using other mediums. There is a lot to be gained by studying the work of our ancestors. the winning entry of the above mentioned public vote was a beautiful segmented urn, made in the shape you can see in 19th century porcelain, the same shape vases and urns were also made in stone ware etc. These shapes have evolved over the centuries because of their sound well balanced designs.

Finally, if public recognition of woodturning is to be improved, how ever good the design, it still has to be well turned with a good finish.

**BRIDPORT  
SMOCK  
COMPANY LTD.**

**SMOCKS ALL SHAPES AND SIZES.  
WOODWORKING, GARDENING, PAINTING ETC.  
EXCITING COLOURS**

*For Details and swatches*

*Phone or write to:*

**B.S.C. LTD.,**

198, GERRARDS GREEN.  
BEAMINSTER.  
DORSET. DT8 3ED.  
Telephone: 0308 863691



**From David G. Grainger  
- Croydon**

Gordon Fradley's article helped to bring back some of the now fading memories of that exciting weekend last August at Loughborough.

I too had never attended a woodturning seminar before, so I didn't quite know what to expect. However, I learned a number of 'new things' which I've taken aboard and these

## Letters (Cont'd)

have become part of my regular workshop practice. I believe this was the object of the event, ie to share ideas and methods used by some, and develop them for use in our own situations. In these days of materialism and the "cut and thrust" of big business, this is a rare but welcome trait.

I hope therefore that it's not too late to extend my thanks to those who worked hard in the organisation and administration and those who demonstrated their skills during the seminar, and like Gordon I too look forward to the next in 1995 when I think I will know something of what to expect.

I joined the association in order to attend Loughborough at members admission price, but now I feel that I should take an active part in the association. I'm certain that a branch of the AWGB in East Surrey/South London would be worthwhile. Working for a machine tool retailer, as I do, I am aware of the large number of woodturners in this vicinity who like myself would appreciate the "fellowship" of branch activities, therefore I am investigating the possibility of setting up a local branch.

So then, I would be glad to hear from those members within reach of East Surrey/West Kent/London South who might also be interested in such a venture. Should

something positive result from this, naturally I would appreciate advice and help from the association committee.

I might add, I am not new to woodturning, I have "played" at it for more than thirty years. My first machine having been fashioned from an old tradesmans bicycle which I once pedalled and scraped. I don't have to do that now. I think I've lost the art since I've had power. Nevertheless I would look forward to hearing from members in conjunction with my proposal.

David G. Grainger  
290 Addington Road,  
Selsdon,  
Croydon CR2 8LF

Tel: 081 657 1895

---

### From Derek Phillips - Cambridge

I have just finished reading Eric Ditchfield's report on the AWGB exhibition at Sandown (Revolutions Issue 28)

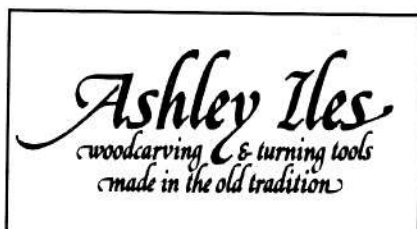
It is a pity that the response for exhibition items was so poor, but perhaps AWGB members have had the same experience as me, and no longer bother to offer items for the shows.

A year or 18 months ago, members were asked to submit photographs of their work, if they would like it

considered for display. I did this, enclosing a stamped addressed envelope for a reply. I heard nothing, not even a note to say the photographs had been received, then in a later issue of Revolutions members were asked to write, once again, because all the photographs that had been received, had been mixed up and they needed to be sorted out. I wrote, and once again enclosed a stamped addressed envelope, still no reply.

Also at some time during this period I have written to the AWGB when requested, to offer my work for exhibition, again no reply. Now the, it may be that my work is not of sufficient standard for the AWGB to use, but at least a reply would have been a nice gesture.

I do not belong to one of the AWGB Branches, as far as I know there is not one within easy reach of where I live, therefore I rely on information in Revolutions and writing letters, as you can see I have not had much success with my letters so my response now is WHY BOTHER, this may be the same for other members of the AWGB.





## Letters (cont'd)

**From Geoffrey Smith -  
Leeds**

I noticed, in the December 1993 issue of *Revolutions* a report on the Irish Woodturners Seminar, that Mac Kemp reported seeing for the first time items turned from Bog Oak.

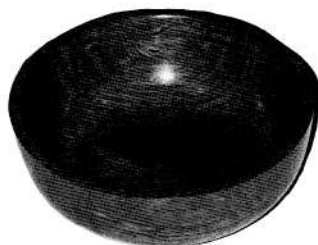
I was fortunate to be given some Welsh Bog Oak in November 1992 which I cut up last year and managed to turn a few items. I am enclosing photographs of three items I have made, Photograph No 1 is of an eight inch bowl, Photograph No 2 is of a small lidded box and photograph No 3 is of a free standing toilet roll holder.

For the record I found the Bog Oak relatively soft



producing a fair amount of dust. I finished the bowl with plenty of wax and a good buffing, the toilet roll holder I finished with sanding sealer and the wax as it was made to stand in a friends bathroom/toilet.

Other than the dust I enjoyed turning the Bog Oak which gives a good well figured dark finish.



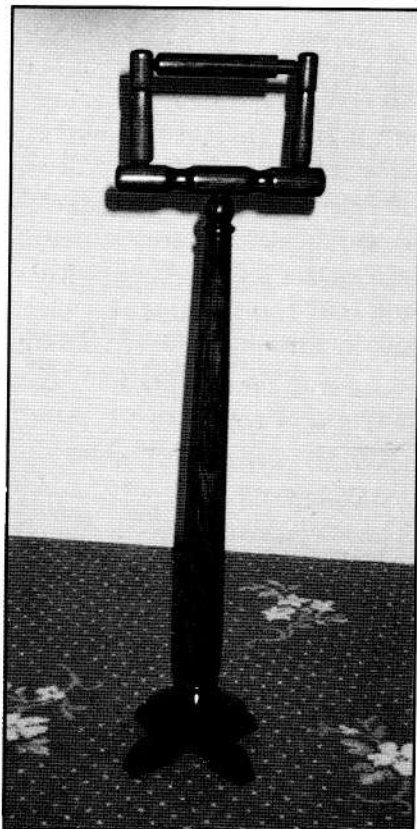
## SOME NOTES ON THE BANDSAW

*Extracted from the  
Cumbria Branch  
Newsletter*

The first bandsaw patented in 1808 by William Newberry of England met with difficulties because of primitive blade development.

In 1846 Mlle. Crepin, a Frenchwoman perfected a method of brazing blades. At the same time a technique for rolling spring steel developed. These two advances made blades easier to manufacture. The bandsaw was developed for practical everyday use by 1860 and as the consumer market expanded the bandsaw gradually developed into the machine that we use and take for granted today.

Bandsaw size is measured



## ABERNETHY WOODTURNING

### Woodturning blanks & squares

Myford, Tyme  
Ashley Isles, Robert Sorby  
Henry Taylor

Gourdiemuir, Glanfoot, Abernethy  
Perthshire PH2 9LS

**Tel: 0738 85514**



# Equipment

by the width from the blade to the support column. Bandsaw speed is determined by the number of feet the blade travels in 1 minute. Most bandsaws run at 2,600 to 3,100 f.p.m. The downwards cutting action of the bandsaw blade makes it safer and easier to use as the workpiece cannot bind or kick back.

Blade selection for the material and type of cut is important:- Types of teeth fall into two main categories: rip saw teeth which cut with their whole point, and crosscut, which cut with the outside tips.

When cutting with a coarse blade, the cut will be faster, but rougher. The cutting efficiency is greater when fewer teeth are working. Coarse blades allow more space between the teeth for the sawdust to be cleared and are useful for cutting thick timber.

Fine-tooth blades are more suitable for crosscutting as they give a smooth finish in this mode; less and finer sawdust is produced, therefore the smaller gullet can cope more easily.

The skip-tooth, as its name denotes has every other tooth missing, which allows better sawdust carrying capacity, but with a strong-body, making it useful for thick work.

For general purpose work, the coarser blade is probably

the best with 3 to 5 teeth per inch. Ideally there should be 3 teeth in the wood when cutting; i.e. for a one inch piece of wood a blade width minimum of 3 t.p.i. is necessary.

The hook-tooth has the advantage of biting into the wood, pulling itself into the piece, resulting in less feed pressure and therefore less blade deflection. The hook-tooth has the same spacing as the skip-tooth, but the gullet is round, which allows it to take in the curly sawdust; it is very good for wet wood as the sawdust does not pack into the gullet.

The standard-tooth blade is similar to the teeth on a hand rip-saw; used at a slow speed it will produce a smooth cut. If fed too quickly, the teeth can clog and try to follow the grain; it can also become quite hot in these circumstances.

Standard and skip-tooth blades require more tension than hook blades. The hook is less likely to break because of the round gullet and will usually outlast the same size skip-tooth.

The hybrid hook-skip blade is less aggressive than the hook and therefore easier to control; it also requires less power and is better suited to the smaller HP machines. It is also advantageous for people with less bandsaw experience.

The blade width is important depending upon the radius

of cut requires:- for a radius up to  $\frac{1}{2}$  inch a  $\frac{3}{16}$  is best, up  $\frac{3}{4}$  a  $\frac{1}{4}$  inch blade. The following table is a good guide.

Cut Radius	Blade Width
up to $\frac{1}{2}$ "	$\frac{3}{16}$ "
$\frac{1}{2}$ to $\frac{3}{4}$ "	$\frac{1}{4}$ "
$\frac{3}{4}$ to 1 "	$\frac{3}{8}$ "
1 to 1 $\frac{1}{4}$ "	$\frac{1}{2}$ "
1 $\frac{1}{4}$ to 1 $\frac{3}{4}$ "	$\frac{3}{4}$ "

other Blade Suggestions:

$\frac{1}{4}$ " 6 t.p.i. standard-tooth is a good general blade for straight cuts and curves

$\frac{1}{8}$ " 14 t.p.i. hook or skip-tooth for thick timber and straight cuts but it needs at least a  $\frac{1}{2}$  HP drive motor.

For the best results the wheels of the machine should be checked for alignment in the vertical plane; this is best done with a wide blade fitted, and tension set. Too much tension could effect the alignment of the wheels.

Note: This information is only a general guide; for more comprehensive details it would be better to obtain a copy of the book from which this information was extracted, namely:

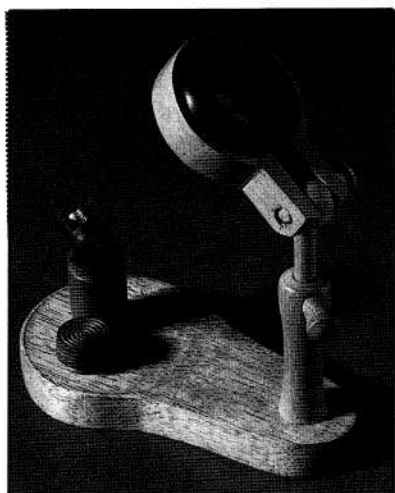
"The Bandsaw Handbook" by Mark Duginske.

Sterling Publishing Company, New York, Cassell PLC London

ISBN 0-8069-6398-0

Fred Singleton

# Gallery

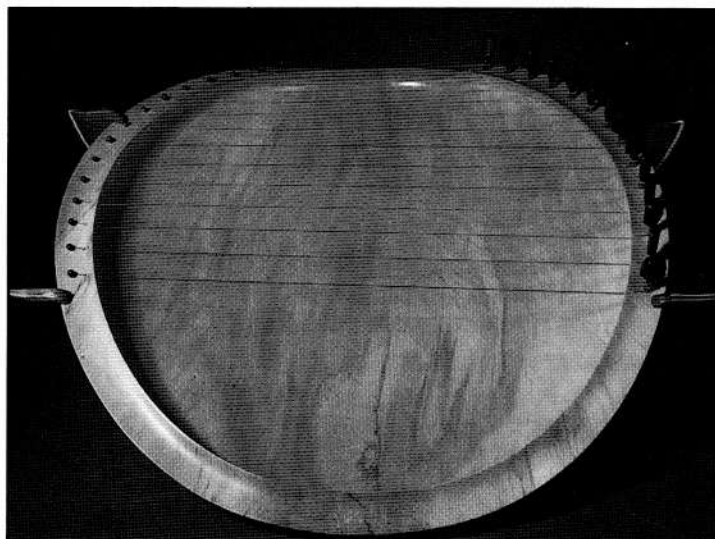


Viewer with a Goblet from a matchstick by Robrt Luke

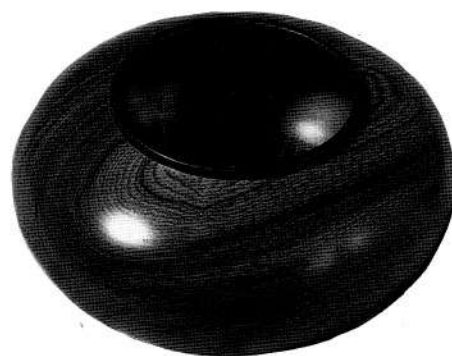
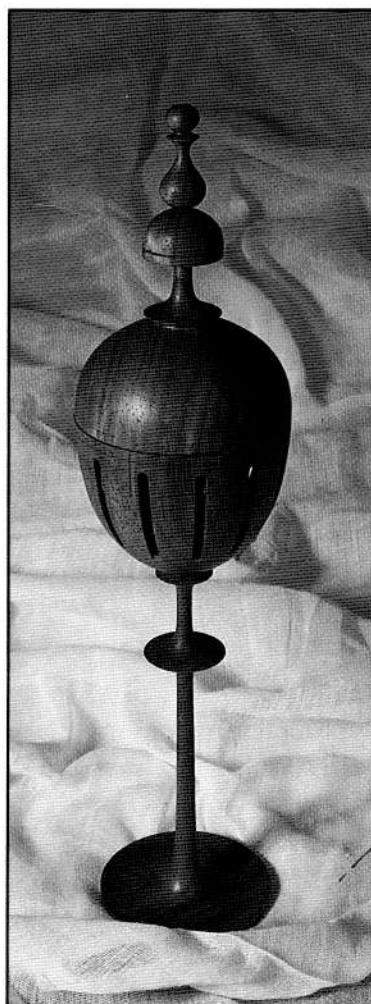


Hollow Form in Sycamore by Paul Daly

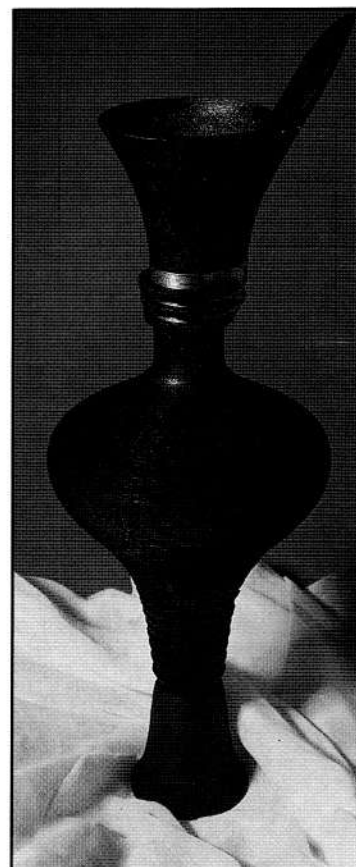
Sounding Bowl in Sycamore Walnut & Holly By Tobias Kaye



Pomander in African Padauk by Stephen Cooper



Cocobolo & Ebony Bowl by John Hunnex



Amphora Grass Tree and Ebony by Nicholas Butler

Although the printers do their best to get the best reproduction of these slides there is no better way than to see them in full colour.

There are a few sets of slides left. They only cost £30 and are available from Len Grantham whose address is on page 5