

# Revolutions

THE NEWSLETTER OF THE ASSOCIATION OF WOODTURNERS OF GREAT BRITAIN

Issue No 135

December 2020

## Mark Baker



**1966 - 2020**

*Mark sadly passed away in October.  
A lovely man taken from us to soon.*

*Rest in Peace Mark*



**[www.awgb.co.uk](http://www.awgb.co.uk)**

A Company Limited by Guarantee - Company Number 8135399  
Registered Charity Number 1150255

# Corporate Members of the AWGB

Further information, including discounts, on the Corporate Members is available on the AWGB website.

## Allan Calder's Ltd

Suppliers of high quality abrasives of many types at competitive prices.  
01538 387738 [www.sandpapersupplies.co.uk](http://www.sandpapersupplies.co.uk)

## Ashley Iles (Edge Tools) Ltd

Woodturning and Carving tools traditionally made to a high specification  
01790 763372 [www.ashleyiles.co.uk](http://www.ashleyiles.co.uk)

## Axminster Power Tool Centre

Suppliers of quality woodturning products: courses from beginner level to advanced.  
0800 371822 [www.axminster.co.uk](http://www.axminster.co.uk)

## Biven Machinery Sales

Suppliers of quality woodworking, carving, woodturning, pyrography machinery, tooling accessories and consumables. Discounts available for AWGB members.  
01253 425793  
[www.bivenmachinerysales.co.uk](http://www.bivenmachinerysales.co.uk)

## Brandon Bespoke

A leading manufacturer of quality Oil and Wax wood treatments – particularly food safe, all developed and perfected over generations.  
01256 220471 [www.brandonbespoke.co.uk](http://www.brandonbespoke.co.uk)

## Charnwood

Woodworking machinery, lathes, chucks and accessories. Next day delivery throughout UK Mainland.  
01530 516926 [www.earnwood.net](http://www.earnwood.net)

## Chestnut Products (Finishes) Ltd

Quality wood finishes with emphasis on products for woodturners. See Chestnut Finishing School videos on You Tube.  
01473 890118 [www.chestnutproducts.co.uk](http://www.chestnutproducts.co.uk)

## Classic Hand Tools Ltd

Quality Hand Tool, Lathes, Turning and Carving tools. 01473 784983  
[www.classicandtools.com](http://www.classicandtools.com)

## Crown Hand Tools Ltd

Crown offer the largest range of woodturning tools worldwide, combining the perfect mix of tradition and innovation finished to the finest exacting standards. 01142 612300  
[www.crownhandtools.ltd.uk](http://www.crownhandtools.ltd.uk)

## English Hardwoods

Specialists in best quality, and unusual kiln dried hardwoods for all purposes.  
07979 251497 [www.english-hardwoods.com](http://www.english-hardwoods.com)

## English Woods

We source a wide range of species of timber and manufacture blanks for woodturning and carving. 01823 681002  
[www.englishwoods.co.uk](http://www.englishwoods.co.uk),

## Exotic Hardwoods UK Ltd

Specialist suppliers of all exotic hardwoods from all over the world.  
01538 715060 [www.exotichardwoodsukltd.com](http://www.exotichardwoodsukltd.com)

## G & S Specialist Timber

Suppliers of timber, tools, lathes and accessories. 01768 891440  
[www.toolsandtimber.co.uk](http://www.toolsandtimber.co.uk)

## Goulden Hardwoods

Air dried English hardwoods in slab or round waxed blanks.  
[www.hampshirewoodsuppliers.co.uk](http://www.hampshirewoodsuppliers.co.uk)

## Hampshire Sheen Ltd

Hand blended finishing waxes and atmospheric colour dyes. 01420 560077  
[www.hampshiresheen.com](http://www.hampshiresheen.com)

## Henry Taylor (Tools) Ltd

Manufacturer of woodturning, woodcarving and woodworking tools. 0114 234 0282  
[www.henrytaylortools.co.uk](http://www.henrytaylortools.co.uk)

## Hope Woodturning

Designer and manufacturer of a range of quantity woodturning tools, Jigs and sanding systems. 01206 230694  
[www.hopewoodturning.co.uk](http://www.hopewoodturning.co.uk)

## Lovealls Workwear Ltd

Suppliers of protective smocks and aprons which can be personalised. Safety, Comfort, Style. 02920 598327  
[www.lovellworkwear.com](http://www.lovellworkwear.com)

## Max Carey Woodturning Trust

A registered charity which aims to educate the public in woodturning. Tuition is provided through a comprehensive range of courses.  
07976 402960  
[www.maxcareywoodturningtrust.org.uk](http://www.maxcareywoodturningtrust.org.uk)

## Mirka (UK) Ltd

Finishing products and tools including abrasive discs, strips and rolls, power tools and accessories 01908 866100  
[www.mirka.co.uk](http://www.mirka.co.uk)

## Olivewoodturning

Specialist supplier of Italian olive wood from a sustainable source.  
Discount available to AWGB members.  
07714 204060 [www.olivewoodturning.co.uk](http://www.olivewoodturning.co.uk)

## Paul Howard Woodturning

Woodturning Jigs, Fluting jigs, Sphere jig, Copy fingers, Woodturning accessories.  
01621 815654  
[www.paulhowardwoodturner.co.uk](http://www.paulhowardwoodturner.co.uk)

## Robert Sorby Ltd

Manufacturer of woodturning tools, lathes, and accessories, chucks, sharpening systems and accessories, woodcarving and woodturning tools. 0114 225 0700  
[www.robert-sorby.co.uk](http://www.robert-sorby.co.uk)

## Snainton Woodworking Supplies

Everything for the Woodturner.  
01723 859545  
[www.snaintonwoodworking.com](http://www.snaintonwoodworking.com)

## Stiles & Bates

Comprehensive Woodturning Supplies since 1996. 01304 366360  
[www.stilesandbates.co.uk](http://www.stilesandbates.co.uk)

## Turners Retreat

Complete range of woodturning tools and courses. 01302 744344  
[www.turners-retreat.co.uk](http://www.turners-retreat.co.uk)

## W.L. West & Sons Ltd.

Timber, Machinery, Turning & Carving tools, accessories and books.  
01798 861611 [www.wlwest.co.uk](http://www.wlwest.co.uk),

## Why-Aye Wood

We offer a range of finishes, tools, project and pen kits and wood turning blanks. Discounts available to AWGB members. 07730 791935  
[www.whyayewood.co.uk](http://www.whyayewood.co.uk)

## Woodart Products

Magnetic & non-magnetic LED lights, Pyrography units & accessories. Micro drill/detailer equipment, Carbide piercing cutters & burrs - and much more.  
07770 226640 [www.woodart-products.co.uk](http://www.woodart-products.co.uk)

## Woodturning Magazine

Best selling magazine for Woodturners. Suppliers of books, DVDs and magazines.  
01273 402871 [www.thegmcgroup.com](http://www.thegmcgroup.com)

## Yandle & Sons Ltd

Everything for the Woodturner.  
01935 822207 [www.yandles.co.uk](http://www.yandles.co.uk)

## DATA PROTECTION

Your personal details are held on computer for the use of the AWGB. We only use this information to run the organisation. If you would like to know what information we hold and how we use it, please contact the Secretary.

## Front Cover

Mark Baker  
1966 - 2020

thanks to Peter Hemsley  
for the cover picture

## Revolutions

Copy deadline for the next  
edition of Revolutions

2nd February 2021

The AWGB is a Company Limited by Guarantee and a Registered Charity. It is administered by a group of elected Trustees who are also Directors of the Company. The Trustees meet at least twice each year and at the AGM. When they meet together they are known collectively as the "The Executive". Additionally, there are a number of people who assist the Trustees in their duties. These people are not elected and are known as "Volunteers".

## TRUSTEES OF THE EXECUTIVE

### Executive President

Phil Irons  
Box Acre, Barton Rd,  
Welford on Avon CV37 8EY  
07774 212635  
philirons@awgb.co.uk

### Chairman

Paul Hannaby  
Windrush, High Street, Drybrook  
GL17 9ET  
01594 544417  
chairman@awgb.co.uk

### Vice Chair & Development

John Peachey  
37a Oxstalls Lane, Longlevens  
Gloucester GL2 9HP  
01452 525976  
vicechair@awgb.co.uk

### Treasurer

Mike Mansfield  
27 Grenville Meadows, Lostwithiel,  
Cornwall PL22 0JS  
01208 872012  
07799 065397  
treasurer@awgb.co.uk

### Secretary

Derek Puplett  
Baldungan, Derby Lane, Shirley,  
Ashbourne DE6 3AT  
01335 360388  
07720 292047  
secretary@awgb.co.uk

### Assistant Treasurer

Jeff Belcher  
Oak House, Hanley Castle,  
Worcestershire WR8 0BJ  
07798 746296  
asst-treasurer@awgb.co.uk

### Membership Secretary & Data Manager

John Peachey  
37a Oxstalls Lane, Longlevens  
Gloucester GL2 9HP  
01452 525976  
membership@awgb.co.uk or  
datamanager@awgb.co.uk

### Trade & Business Officer

John Brooks  
Lower Haygrove, Millpool,  
Bodmin, PL30 4HY  
07814 826929  
trade@awgb.co.uk

### 2020 Seminar Bookings

#### Co-ordinator

Stephen Evans  
3 Teewell Hill, Staple Hill  
Bristol, BS16 5PA  
07922 091586  
seminar@awgb.co.uk

### Development Officer (Trustee in Waiting)

Kyle McGill  
Chelmsford, Essex, CM2  
07593 431179  
development@awgb.co.uk

## REGIONAL REPS

### Scotland

Darren Crisp  
40 Andrew Baxter Avenue  
Ashgill, Larkhall, ML9 3RG  
07368 504317  
scotrep@awgb.co.uk

### North

Brian Mouat  
17 Lon Dderwen, Abergele  
Conwy LL22 7DW  
01745 833970  
northrep@awgb.co.uk

### Midlands

Vacant  
midlandrep@awgb.co.uk

### South East

John Abercrombie  
07860 912539  
serep@awgb.co.uk

### South West

Bryan Milham  
13 Manor Gardens, Locking,  
Weston Super Mare, BS24 8DQ  
07876 321293  
swrep@awgb.co.uk

## Chairman's Notes

### Paul Hannaby

I was recently persuaded to buy a small camper van so my wife and I could see some more of the country. I thought I might be able to use it when I travelled to club demonstrations and perhaps combine the two activities but I don't think I will be doing much of either for a while! I'm starting to feel like a man in a desert who has just bought a raincoat...

Sadly, the improvements in Covid I mentioned in the last issue have started to unravel and as I write this, the whole country is facing another lockdown. Estimates (perhaps speculation would be a better word) for any sort of normality are suggesting that would still be many months away and tough measures are needed to keep infection rates down so it's unlikely many clubs will be able to do much in terms of meetings for a while yet. We are keeping an eye on the government guidelines, which differ considerably depending where you are and appear to get more varied as time goes on. The trustees of the AWGB are still of the opinion that it would be impossible to generalise on Covid specific advice so our advice remains the same – follow the government advice applicable to your circumstances and location.

Since the last issue the AWGB has lost two of its volunteers. Gordon Fisher, Chairman of the Dukeries club and assistant rep for the Midlands and Rob McCorkell from the Kent club and volunteer on our training & development subcommittee. Both were enthusiastic contributors and will be missed by us all. Our thoughts are with Gordon and Rob's families.

## Covid Grant Scheme

The executive has discussed the financial position and have decided that the best use of the surplus funds would be to set up a Covid grant scheme to assist clubs who need financial support due to the Covid situation. We have already had a number of applications and are happy to discuss individual circumstances and needs where necessary. More details elsewhere in this issue.

Since the last issue we have also lost the Toolpost in Didcot. It's sad to see such a well established and respected business close their doors and I wish all the Hemsley family good luck for the future.

## New Initiatives – an update

We continue to hold twice weekly Zoom meetings and plan to keep these going at least until clubs are operational and possibly beyond. They continue to attract a range of participants and we are all learning from each other. Don't forget, anyone can participate in the meetings. You just need an internet enabled device. More details are on our website and Facebook page.

We are happy to host a trial meeting for any club so you can see how it works and we are also happy to offer advice where needed. We also have the capacity to host inter-club events. Contact me if interested.

We continue to assist with the Chestnut "Conkers Live" demonstrations which take place roughly every three weeks. We are also happy to work with other corporate members to support them with Zoom demos or sessions if we are able.

## VOLUNTEERS

### Youth Training

Ron Caddy  
The Studio, 23 Wisley Road  
Andover SP10 3UQ  
07903 313065  
youthtraining@awgb.co.uk

### Workshop & Training

Vacant  
workshops@awgb.co.uk

### Webmaster

Colin Spencer  
Calle Penyes Roges 13  
03790, Orba, Spain  
+34 630559427  
0844-2328371  
webmaster@awgb.co.uk

### Newsletter Editor

Sheila Hughes  
Alicia, Chardstock Lane  
Tytherleigh, Aminster EX13 7BQ  
01460 221448  
07768 373086  
editor@awgb.co.uk

### Health & Safety Officer

Martin Dickinson  
3 Ryslaw Farm Cottages, Duns  
TD11 3HX  
01890 840635  
hs@awgb.co.uk



Training events are still on hold for the time being. If circumstances permit, we will publish some tentative dates in the next issue of *Revolutions*.

## Volunteers

We are still in need of more volunteers to help with the running of the association. If you are able to spare a little time and think you can help fill one of these roles, please get in touch. The AWGB is entirely run by volunteers and without them, it would cease to exist.

## Seminar 2021

Don't forget the new dates next year of 24-26th September 2021. We have held the prices and due to the change in dates, we have extended the "early bird" rates until the end of January 2021 so please book before then to take advantage of the discount. We will continue to guarantee all bookings and will offer full refunds if the event doesn't go ahead as planned.



## Seminar Scholarships

Due to the change in Seminar dates, we have extended the deadline to the end of April 2021. Scholarships are open to any AWGB member. Please apply using the form on our website to the secretary by the 30th of April.

Where possible, we are trying to operate business as usual and are trying to maintain communications and offer assistance where we can. If you have any suggestions for other things we can help with or have any questions you think we can help with, let me know. I hope you continue to stay safe and I look forward to getting back to normality.

## Note from the editor

*I would like to wish everyone a Merry Christmas and a Happy New Year - with the hope that 2021 will get us all back to our clubs and friends, that are in and out of the woodturning world.*

*Please note I have a new address and telephone number - see page 3 for information - email still the same.*

*Stay safe and well everybody -  
Keep Turning*

*sheila*

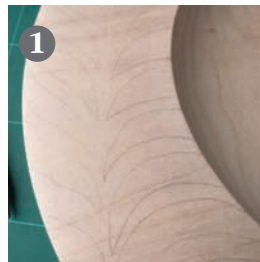
**Dont forget to renew  
your membership!**



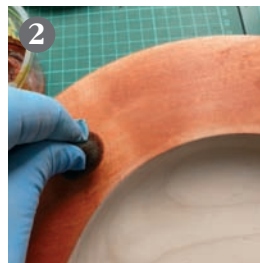
## CHESTNUT P R O D U C T S FINISHING SCHOOL

### Flaming Feathers Platter

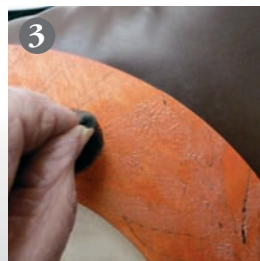
WITH SHEILA AND STEVE



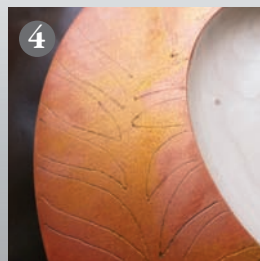
**1** This platter was turned in Maple, then the design was drawn around the edge of the rim. Using pencil allows an eraser to be used if needed, but take care not to press too hard as this could leave indentations in the wood.



**2** A coat of Orange Spirit Stain was then applied using a small piece of foam. The whole rim was covered, but the stain was deliberately left with a patchy effect. This also removed the pencil lines.



**3** After enhancing the pattern with a pyrography pen, Copper Metallic Paint was applied using another piece of foam. Areas to be burnt later should be left unpainted.



**4** Before the paint is dry, apply Yellow Iridescent Paint randomly over the rim with a clean sponge, allowing it to mix with the Copper Metallic Paint. Once dried the pyrography design was burnt into the rim.



**5** The finished platter, with three coats of Acrylic Gloss Lacquer. Each coat was cut back lightly with Red, Orange and White NyWeb before the application of the next coat.

See our YouTube channel for more tips!  
More information available from your  
local stockists or contact us at:

PO Box 260, Stowmarket, IP14 9BX

Tel: 01473 890118

mailroom@chestnutproducts.co.uk  
www.chestnutproducts.co.uk



Notice is given that the  
**ANNUAL GENERAL MEETING**

of the

**ASSOCIATION OF WOODTURNERS OF GREAT BRITAIN**

(A Company limited by Guarantee - Company No. 8135399)

will be held at

**St Cuthbert's Community Hall, Sharp Street, Burnley, Lancashire BB10 1SL**

**On Sunday 28th March 2021 commencing at 1.00 pm**

Regarding Trustee positions on the Executive:

Brian Mouat, Regional Representative for the North Region is due for re-election. He has been nominated and is willing to serve a further term of office. Pat Murphy Regional Representative for the Midlands has resigned and his position remains vacant.

Kyle McGill Development Manager, has been co-opted during the year and will formally become a Trustee at the AGM. John Peachey was elected by the Trustees to the position of Vice Chairman on an interim basis.

The Secretary has requested, where necessary, nominations from Branches for the positions of Regional Representatives and the statutory notices have been placed.

Under Section 324 of the Companies Act 2006 and the Articles, a member is entitled to appoint another person as their proxy to exercise all, or any of their rights to attend, speak and vote at the AGM. The appointment must be in writing and notified to the Secretary before the meeting.

A Corporate member may nominate a person to attend on their behalf, in writing to the Secretary, before the meeting.

As usual, there will be tables on which to exhibit attendees work for submission into the Chairman's Prize Competition. Tables will also be available for the sale of tools and the like.

The AGM will be preceded by a meeting of Branch Representatives, which will commence at 11.00 am and be Chaired by Paul Hannaby.

**If you are attending either or both meetings, please notify the Secretary by Monday 15th March 2021 to enable us to supply numbers to the caterers for lunch.**

The Secretary can be contacted at [secretary@awgb.co.uk](mailto:secretary@awgb.co.uk) or on 01335 360388 / 07720 292047

**ANNUAL GENERAL MEETING**  
of the  
**ASSOCIATION OF WOODTURNERS  
OF GREAT BRITAIN**

(A Company limited by Guarantee - Company No. 8135399)

Will be held at

**St Cuthbert's Community Hall, Sharp Street, Burnley, Lancashire BB10 1SL**

on

**Sunday 28th March 2021  
commencing at 1.00 pm**

**Agenda**

Apologies for absence

Acceptance of the minutes of the 2020 AGM

Matters arising from 2020 AGM minutes

Treasurer's report for the year ending 31st December 2020

Chairman's report

Announcement of the ballot for Trustees

Vote on appointment of Accountants/Auditors

Result of ballot on any Resolutions

Any other business

## A few words about Mark Baker

I first met Mark nearly 20 years ago at a trade show and immediately found him to be approachable and over the years, stopping for a chat became a regular feature. Later I became a contributing author to the Woodturning magazine and found Mark's support and guidance invaluable. He never got phased if I was running close to the wire on the deadline and always came across as calm and helpful, a sentiment echoed by everyone who knew Mark. I recall more than one occasion where Mark went out of his way to help me, even loaning me an attachment to try which he told me probably wouldn't fit my needs but let me try anyway only to discover he was right all along!

In recent years I often talked with Mark about the AWGB and what was happening and he was always supportive of anything we were doing and was interested in hearing our news. He was always happy to help with promoting our activities in the Woodturning magazine and his support was invaluable to the organisation.

Mark was more than an editor and salesman at the shows. He was a very accomplished and respected turner. I recall booking him to do a demonstration at my local club and when he came he mentioned he thought we were located in the Forest of Bere rather than the Forest of Dean but he still came anyway! Every time I saw Mark turn, at demonstrations, shows and at the Seminar where I was fortunate to be the camera operator at one of his demos, I was impressed by his explanations which went in to great details but conveyed in a way that even I could understand. He had a knack for communicating at everyone's level and teaching us while we were thinking we were just being entertained!

Thank you Mark for being our friend and for all that you did. All our thoughts are with Sarah and family.

**Paul Hannaby**



I first met Mark in 2003 at a woodworking event in London. I was a novice turner just starting out on what I thought would be a distracting hobby. Only a few months later I had moved from London to Suffolk and was invited to attend an all-day woodturning demonstration given by Mark at a club in Martham, Norfolk. His demonstration was superb, and fired my enthusiasm even more. I bought his book and he signed it and chatted about my move to Suffolk and my plans. Little did either of us realise then that not only would we soon become firm friends, but that years later Mark would become my Editor at Woodturning magazine.

Over the years that followed I had lots of contact with Mark through my various positions on the committee of the AWGB, the RPT, at seminars, Youth Training events, shows, and as a writer for his magazine. We did not always agree on things, but with Mark it never seemed to cause any rift between us; we got on and that was enough. Friends deal with differences.

Mark's legacy is an important one. Through his work at Woodturning magazine, writing, and demonstrating, and the standard of his work, he has been an ambassador for woodturning, and an encouragement and inspiration to countless turners. Myself included. His knowledge of the craft, its history, and its practitioners, worldwide, was incredible, and no discussion with him was ever boring.

Throughout his illness we talked on the phone several times a week, and the long, ranging conversations became almost part of daily life. In the early stages of his illness we met at his home and then went out for Chinese dumplings to his favourite restaurant, and spent a day laughing, reminiscing, and without saying the words, hoping this would not be the last time. Very sadly it was.

Mark Baker was the most unassuming man; kind, quiet, considered, and incapable of not sharing his passion for woodturning. Even in the weeks before he passed, Mark's first words at the start of a conversation would be, "And how are you doing?" He was a good man. I will miss him as if he were family. But he was a woodturner, so he was family. Goodbye, my friend, and my deepest, heartfelt condolences to his family, friends, and acquaintances. You are already missed.

**Andy Coates**



© Peter Hemsley

When I worked it out I realised that I must have known Mark Baker for nearly 20 years. Probably the first time I met him was at one of the many woodworking/woodturning shows that used to happen across the UK. In later years he encouraged me to do some demonstrating and it was his comments that finally helped to make up my mind to get on the demonstration circuit.

I also had the pleasure of serving on one of the same committees as he did, the Howe committee which is a good causes committee of the Worshipful Company of Turners of London where we had some good chats afterwards. When I became the Chairman of the Register of Professional Turners back in 2016 I could always rely on him to give an honest opinion about various things but



I have to admit that we did not always agree on the way some things should be done but we formed a firm friendship despite or possibly because of our differences. As Editor of Woodturning magazine he always insisted that health and safety should be a constant feature of the articles. No image that flaunted H&S was ever printed under his leadership and it is probably down to his attitude towards it that woodturning is a safer craft these days than what it used to be.

Strangely, in all the time I knew him I never watched him demonstrate but I have seen some of his work, he was a good turner and was always ready to help others with their turning problems. As there are Captains in industry so Mark was a Captain in the craft of woodturning who promoted the craft wherever he went. He will be missed for many years to come.

God bless you Mark and thank you for being my friend.

**John Boyne-Aitken**



Having known Mark for many years as a friend, colleague, supplier, customer, demonstrator and, of course, as editor of 'Woodturning' magazine, I have enjoyed many opportunities to chew the fat with him. Unfortunately I didn't share his passion for fly fishing so our conversations would inevitably turn to woodturning - usually sooner rather than later. I can't say that we always agreed but that only goes to highlight one of Mark's great attributes: he not only held opinions but he also listened to, and respected, the opinions of others even when they differed from his own. It was probably this empathetic approach to the world that made him such an engaging and approachable demonstrator. Mark's mission in life was to spread the 'gospel' of woodturning and, above all, to encourage turners of all skill levels to participate fully in the activity that formed the focus of our bond. Many will be aware of the 'survey' which Mark conducted as he travelled about the country, and indeed the wider world, demonstrating at clubs and shows. Through this, he endeavoured to gauge the actual activity level of those in his audiences that identified themselves as woodturners. The last time I chatted to him about this, Mark told me how depressed it made him to have deduced that the average number of pieces turned by these woodturners amounted to just two point four (2.4) projects per annum. Given his lifelong commitment to encouraging participation in the craft, Mark found this information, derived wholly from his own personal research, to be indicative of the causes of the decline of so many turning clubs today. If this figure surprises - and maybe appals - you, as it did Mark, then perhaps the most fitting tribute any of us can pay to him is to go out to

our workshops and simply turn wood. Not just once a year, not even two point four times a year but frequently and regularly until we have developed a skill level that would make Mark proud to describe us as woodturners. That surely is the least we owe this dedicated, patient, skilled and giving friend, sadly no longer with us.

**Peter Hemsley - The Toolpost**



© Peter Hemsley

I was deeply saddened by the news of Mark's passing. I worked with Mark for over ten years, writing articles for Woodturning Magazine here in the UK. Over that time, we became good friends, often meeting up to share a meal and a beer at seminars and symposia here in the UK and in the US.

Mark was a leader in the woodturning community and his depth and thirst for new and rediscovered knowledge, in and around the subject of woodturning and its history was second to none. This came through clearly in his many articles, books and demonstrations, where he sought to share this.

On a personal level, I miss his monthly calls, which were usually to discuss details and ideas for upcoming articles for the magazine and often to remind me that my article was already overdue! At the end of these calls, he would always thank me for my work and say 'thank you my friend.'

Mark will be greatly missed and the space he has left will not easily or quickly be filled.

Thank you my friend, for all that you did.

**Richard Findley**

I first met Mark in 1997 when he took over from me as Robert Sorby's main demonstrator. When he became editor of Woodturning magazine we often discussed woodturning topics. We often challenged each other about what should be included in the magazine, and whilst we didn't always agree, we always came away respecting each other.

Mark was passionate about the craft which came over in his editorials and personal demos. His contribution to the woodturning world during his 24 years with the magazine was immense.

In his last editorial he summed up his time at the magazine. *"I guess that the only sad part in my reading and learning from the magazine and related books was that, over the years, some of the master turners, authors and readers have passed away. Sad to say as that was and is, I know their legacy was that they shared their knowledge and people gained from it immensely. It is on their shoulders that we continue to learn, creating beautiful things and having fun doing so."*

Mark you enriched the lives of countless people, sharing your knowledge, wisdom and expertise and leave a lasting legacy to the world of woodturning.

Our thoughts are with Sarah and your family.

RIP Mark.

**Phil Irons**



Throughout the course of our lives, we each encounter just a few very special people who make the greatest impact upon us; Mark was one of those people! He showed an enormous level of confidence in me and in my work, supporting me through a change of career into woodturning, in a way in which I understand, he supported many others. At a time when he was struggling with his own personal health issues, he was so often the first to enquire as to "How are you, my friend?" I guess that sums him up; despite the greatest of all personal difficulties of his own, he was always there to offer support to others. I, like so many people both inside and outside the field of woodturning, owe him an enormous debt of gratitude. Rest peacefully, my friend!

**Les Symonds**

## The Mayflower 400 Platter – A collaborative project across the Atlantic

**Phil Bull**

At the end of 2018 Plymouth Woodturners (PWT) started to plan something special that could help us celebrate Mayflower 400 in 2020, an international event commemorating 400 years since the Pilgrim Fathers sailed from Plymouth, England to America on 16th September 1620.

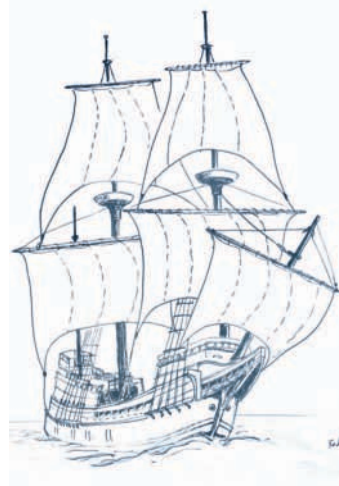


A collaboration between Plymouth Woodturners and Massachusetts South Shore Woodturners

We decided to try and reach out to a woodturning club located in or close to Plymouth Massachusetts to see if they would be interested in joining us in a joint collaborative project together. We looked on the internet and found a club based in Abington which is just 20 miles from Plymouth, Massachusetts. This turned out to be the Massachusetts South Shore Woodturners (MSSWT), and so we got in contact with their president at the time, Steve Wiseman and explained what we were thinking of doing. Steve sounded interested and took the idea back to their committee who were really enthusiastic about it and agreed to work with us to plan a series of joint activities for the Mayflower 400 (UK) and Plymouth 400 (USA) events for 2020.

In 2019 we engaged in a series of calls with MSSWT and found out that both clubs were in fact very similar, with about the same membership size and club ethos. We seemed ideally suited as partners. Originally the Mayflower themed project was to include the sharing of video demos between the two clubs and the making and exchanging of turned wooden items typical of the period (1620). These items were to be similar to the ones that might have been found on-board the Mayflower during its epic voyage to America and would later be displayed by the clubs on either side of the Atlantic.

Unfortunately due to the Covid-19 epidemic and subsequent lockdown, many of the planned activities including the video link-up between the two clubs didn't happen. However, one key piece which the two clubs agreed to make together was the Mayflower 400 platter. This magnificent 18" diameter piece of American Maple was to have a



Concept drawing of the Mayflower at sea



carving of the Mayflower ship at sea at its centre.

The platter was to be turned in Massachusetts by Joe Centorino (now the current president of MSSWT) and then shipped over to the UK to be carved by PWT member Brian Marks.

The remit for the carving was that the ship should be at sea and looking forward. Brian found



The original piece of maple



The platter on Joe's lathe

some suitable photos of the Mayflower and a drawing was made for the prototype carving. Brian and Joe had a video chat to agree the way forward and then Brian sent Joe a copy of the drawing so that he knew what Brian had in mind. They agreed on the wood (maple) and the size of the platter (18"), its general shape and the depth he would need to leave for carving.

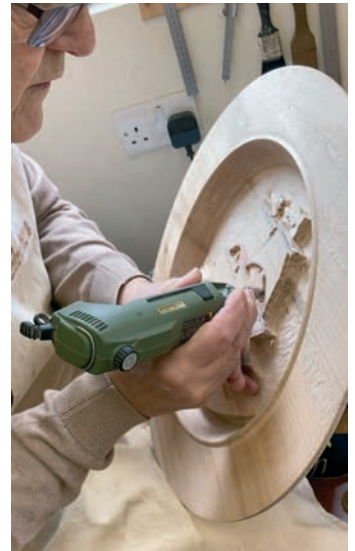
Joe explained, "I was very excited to be involved in this joint project, my first collaboration of this type and volunteered to turn the base platter. I selected Maple as representative of the available wood in this area and felt the platter should be as large as practical to show off Brian's beautiful carving. I used my favorite Vicmarc 120 chuck with 128 mm jaws for maximum stability then without thinking what type of problem it would create for Brian, I removed the tenon mistakenly assuming no further turning was needed. In true British fashion though, he overcame the challenge and I couldn't be happier with the result! I hope to continue and expand the partnership between our two clubs in the years to come".

Joe did a great job turning the platter and then shipped it over to the UK. When the platter arrived, Brian realised he needed to fine tune the turning to adjust the various thicknesses of the wood ready for carving. Only problem was ... no tenon!! Brian overcame the problem by making a temporary faceplate out of plywood and remounting the platter on his lathe to make the final adjustments.

The drawing was then transferred onto the centre of the platter using carbon paper. Being a special commission, Brian did a quick rough carving on a piece of scrap wood first to satisfy himself that the carving would work. In order

to hold the platter while carving, he made a support out of another piece of scrap wood with angle brackets which he screwed to the plywood faceplate. The wooden support was then held in a vice.

When shaping the sails it was important to remember which way the wind was blowing to get them all to reflect that! As it was a deep relief, getting in between the masts and sails to work was made much harder than usual. A Proxxon drill and some burs helped out there. Having finished the sails and masts Brian did the final shaping of the hull to reflect the direction of travel and then worked on finishing the sea.



Brian at work on the carving

Brian explained "The lettering was carefully set out on tracing paper and applied with carbon paper in the same way as the main design. When laying out lettering on a circular object like this, the important thing to remember is that the outside has to be wider apart than the inside. Because of the varying widths and shapes of the letters a judgement has to be made as to what looks best. Doing it on paper first is safest I find".



The carving takes shape

When the carving was finished, it was carefully removed from the temporary chuck and a coat of finishing oil and two coats of soft wax was applied, giving it a nice finish.

"American Maple looks like European Sycamore and is of the same family but it is much harder to work", explained Brian. "The end result is the same but hand working it is much tougher going. A very enjoyable experience was had overall but I think I will use Sycamore in future if carving!"

The joint project has been a great success and we are hoping the platter will go on display to the general public in Plymouth later this year. We also hope that the two clubs will be able to continue working together on future collaborations.



The finished platter

## **Allan Calder's Ltd** Sandpaper Supplies

Unit 2B Churnet Works, James Brindley Road,  
Leek, Staffordshire ST13 8YH



We are supplying top  
quality brands of  
sanding abrasives for all  
types of wood turners.

[www.sandpapersupplies.co.uk](http://www.sandpapersupplies.co.uk)

Email: [sandpapersupplies@yahoo.co.uk](mailto:sandpapersupplies@yahoo.co.uk)

Tel: 01538 387738

**Association of  
Woodturners**  
of Great Britain



**The AWGB have produced a  
commemorative hardback  
book of all the finished  
pieces in  
Ray Key Collaborations which  
can be purchased online at  
[www.awgbseminar.co.uk](http://www.awgbseminar.co.uk)**

Background information and photos of the  
Ray Key Collaborations are on the  
AWGB website  
[www.awgb.co.uk/ray-key-collaboration](http://www.awgb.co.uk/ray-key-collaboration)





## AWGB Helping Lincolnshire Wolds Woodturning Association keep its members.

We are proud to provide regular contact between our existing members and to promote the craft of woodturning to new turners, as a rural club in the heart of the Lincolnshire Wolds our members travel from far and wide to attend our bi-monthly meetings. L.W.W.A has always been interested in having a media presence for the club, with a dedicated website and other social media platforms.

Whilst Covid-19 has changed the world and the way in which we all do things, for the Club, it has forced us to embrace new technology and we are using this to help us to take the Club to the next level and make 2020 a year we will never forget.

A few members started an online monthly chat session, the word soon spread that we could still all get together to talk turning; with that in mind it was decided that we would try and retain their interest with online meetings via Zoom.

The committee had limited funds but decided that we should offer free chat nights once a month followed by our regular Club Night with professional demonstrations to all our paid up members for the rest of 2020, aware that this would deplete our resources but with the hope all of our members would stay and come back in 2021.

We were greatly relieved the idea proved popular with all those that tuned in; we had booked well known UK and International turners for our monthly club nights as we are aware that many of them relied on live demonstrations for their livelihood, thereby supporting the whole woodturning family.

Our members were balloted to see if we could maintain the numbers from 2020 into 2021 explaining proposals of how we could finance the club if restrictions to meetings continued, the result was that we could lose at least 40%, this was a worry initially but with our ongoing success, chat nights soon became 'show and tell workshop nights' where members were encouraged show what they had been working on, sharing tips and answering problems. Interest in the club was continuing to grow and the committee listened to the members concerns and came up with a payment model that seemed to work for many more of our members.

Still moving in the right direction the next exciting development was that three members decided to set up their own workshop studios to 'go live' during the workshop nights; the comments made were really encouraging, "almost like the nights we had in the hall" was one of them, "best night we've had this year" another.

A suggestion was made that if the club had the right equipment we could setup in our members workshops, as long as we adhered to the Covid-19 rules, and record our own tutorials and demonstrations and make the recordings available to the membership, furthermore when we got back to our normal meetings we could stream those 'Live' via Zoom to the members who were either unable to travel through health or personal reasons or too far away to reach the club. The possibilities seemed endless; however,

as the Covid-19 pandemic seemed set in for some time and funds were running low, we would have to wait.

In October we received an email from AWGB regarding a Discretionary Grant Fund that had been setup.

Reacting quickly our committee decided that as we had already been successful in holding on to a proportion of our membership and had even signed up new ones since the lockdown, maybe our idea was worth exploring. An application was made, and we are incredibly grateful to say that it was granted to help us purchase the equipment we needed. This has now been received and initially setup in one of our members bigger workshops, as it is large enough enabling us to socially distance whilst recording.

Technology and Digital production have changed drastically this year, this has allowed us, as a club, to make the decision to use it to move forward and expand our horizons. With the help of the grant from the AWGB we purchased a reasonably priced laptop capable of running the software we needed plus three webcams, a microphone and a controller to run the software. The software, OBS Studio, is a free download and used to stream live meetings via Zoom; other platforms are also available; however, we chose this route which is reasonably easy to use and has many more features than we needed. The pictures show the equipment; illustrating how user friendly and unobtrusive it is. We have a lightweight gantry system in progress to mount the cameras. Our trial run to test the recording system was a great success and we are currently preparing a video to show to members on our next workshop night.





## A Quick Guide to renewing your membership for 2021

Here is a quick guide for individual members renewing this year. If you renew through a club please speak to your membership secretary.

Check your current membership card. If it doesn't say 2021 then you need to renew now, using one of the following methods.

### By Cheque

Write your membership number on the back and post it to the membership secretary.

You do not need to complete a form or any other paperwork.

### Bank Transfer/ Standing Order

Check the amount of your standing order is £18 for single members £28 for family membership

In the payment reference quote your membership number and name eg 12345 /Smith nothing else.

You do not need to complete a form or any other paperwork.

### Via the website

Complete the on-line form in full – please don't forget the Data Protection section.

Complete the payment screen – you do not need a Paypal Account to use this facility.

Any queries please to the membership secretary – [membership@awgb.co.uk](mailto:membership@awgb.co.uk)

## Dear Member

After what has been a fairly horrible year for most of us, it is fast approaching that time when you are going to be asked to renew your membership.

I know that some of you will be considering whether to renew, but would ask you to support your club/AWGB by renewing straight away.

You might well ask why bother when I've not been able to go to meetings, but there is a very simple reason for doing so. Let me explain.

What is a club or association? It is a group of like minded people with a shared interest. Without members the club is nothing, and without a healthy membership at the start of each year those who work so hard to run the clubs may well think it's not worth the time and energy, and decide to give up.

Whilst club activities may have been on hold for much of this year, many clubs will still incur costs which can't be put off. The same goes for the AWGB, we are continuing to produce Revolutions and support clubs with grants and online events, until such time as things can get back to normal.

So please, when asked, show your support for your local club and renew, because if too few decide to renew there may not be a club for you to join later in the year.

Once a club folds it is likely to never be replaced and the friendships and camaraderie lost for ever.

**John - Membership Secretary**



**Come and visit our warehouse at Megcroft Farm and see our extensive selection of exotic and native hardwoods, it's best to phone first.**

You can also order directly from the website at **[www.exotichardwoodsukltd.com](http://www.exotichardwoodsukltd.com)**

Email: [hello@exotichardwoodsukltd.com](mailto:hello@exotichardwoodsukltd.com)

**Tel: 01538 715 060**

**Exotic Hardwoods UK Ltd**

Megcroft Farm • Onecote Road • Ipstones  
Staffordshire • ST10 2NB

All Seminar delegates are welcome to visit us here and have a look at all the wood. ***You won't be disappointed.***



## Dear Member

Covid-19 is and remains a unique event in most of our lifetimes and at the time of writing, remains so. We at the AWGB are unable to predict when we are likely to return to any sort of normality and therefore it has been difficult to determine by how much and when to make decisions about subscriptions. We have received queries and requests for refunds for 2020 and reduced fees for 2021 and, over the past few months we have given considerable thought as to how we can address this question.

As we enter the last quarter of the year it is becoming obvious that the vast majority of Branches and Clubs will not be meeting face to face for the remainder of the year and we are now in a position to project our financial position at the end of the year so we consider now is the time to act.

As some of you have quite rightly pointed out, we have made savings this year by having to cancel face to face meetings, the AGM, national shows, club visits and other expenditure. However, the savings are not as significant as some may think. By far our largest single expenditure is the publishing and posting of Revolutions newsletter on a quarterly basis. We consider it an essential item to keep everyone in touch and will continue to publish it. We have tried to keep in touch with membership by offering Zoom chat sessions and free online demonstrations, all of which incurred extra costs.

Overall, we have estimated that the savings amount to approximately £6.00 per member for 2020. Our difficulty has been how we can best return this to our membership. Unfortunately, it's not just a simple case of sending everyone £6.00 as that would be an administrative nightmare for both us and the affiliated clubs who collect subscriptions on our behalf and we simply don't have the time or resource to implement it.

Similarly, it would be an equal nightmare to reduce 2021 subscription by £6.00 as many members pay by standing order and they will have to remember to inform their banks to reduce payment to £12.00, then the following year, change it back again to whatever the fee will be in 2022.

Whilst this may initially appear a straightforward solution, previously when AWGB annual subscriptions were increased, we found it took several years for some members to amend their individual standing order payments and this created a great deal of administration effort for us. In addition, to enable refunds to individuals, we would need to hold members bank details, which we currently do not hold and have no desire to hold, for obvious security reasons. As we do not wish to again face the administrative burden and financial issues outlined above we have decided refunding individual members is not a practical option.

The Executive has debated the options at length and has decided that it will not be feasible to make any direct refunds

to members. Instead we will set up a 'Covid Fund' of approximately £18,000 (our current best estimate of what the end of year surplus will be) which Branches and Clubs can apply for.

Our existing discretionary grants will continue to be available whilst the Covid fund will provide a temporary additional grant opportunity for Branches and Clubs.

The Covid fund will be handled in a similar way to our Discretionary Grant Fund, but in this case, we will consider applications where Covid has caused financial hardship or loss for a Branch or Club or will do so in the coming year. We won't try to define an exhaustive list of criteria (other than to say that adjustments in club membership subscriptions may be included as a reason) but we are happy to discuss particular circumstances if you are unsure. Each submission will be considered on its merits by the Grant subcommittee and amounts allocated will be made on a case by case basis.

As the Trustees of the AWGB, we believe that those who have been badly affected by the Coronavirus should be the main beneficiaries of our savings. Applications can be made using our existing discretionary grant application form which is available on our website or on request from the secretary. Please mark your application as "Covid fund".

If you have any queries please get in touch. We will do our best to resolve any questions raised. We take this opportunity to thank you for your co-operation and hope that the vast majority of you will agree with the manner in which we intend to distribute our savings in 2020.



### Woodart Products

**Magnetic LED Lights**

**Pyrography units –  
Razertip, Scorpion and Dragon**

**Pyrography Accessories –  
Tips, Fume Extractors, etc..**


**Micro-Drills –  
35000rpm and 45000rpm units  
fitted with 1/8" (3.175mm) collet chuck**

**Cutters and Burrs for Micro-drills  
(and other rotary tools)**











SUPERIOR POWER CARVING TOOLS

[www.woodart-products.co.uk](http://www.woodart-products.co.uk)

[john@woodart-products.co.uk](mailto:john@woodart-products.co.uk)

Tel.: +44 (0)7770 226640



## Bin/Burn/Turn part 5

### Needle cases/very small box

**Robert Postlethwaite**

I hope you have enjoyed these notes and your skills have improved, this project requires more care than the previous ones and some accurate work. A needle case is just a small long box, see photos, which were originally used for needles and pins. I have made them in all types of wood from native hardwoods like Beech and exotic hardwoods like Ebony. It is best to start off with native woods as they have a bit of give when fitting the lids and exotics are hard so if the fit is too tight can split the lid, but look much nicer, the one shown is Purpleheart.



Drills and blanks

You will see that I use an engineers 3 jaw chuck, but any chuck will work, but remove the dovetail jaws as these will mark the wood.

Start off with a blank about 25mm square and 150mm long, I then turn it between centres to round and then saw off about 25mm for the lid. Hold the lid in a chuck and face off, now for drilling, the lid needs a hole 15mm diameter, I use a forstner drill bit, and about 15mm deep.



Blank cut up

Now chuck the body with about 50mm sticking out of the chuck and face off, leave a centre dip, this makes drilling easier it does not wander from the centre. Use a standard



Drilling Lid



Drilling Body

twist drill 10mm diameter and drill about 65mm deep. Now the hard part turning the spigot and fitting the lid, use a parting or beading tool to shape the spigot about 10mm long, testing as you get to size, aim for a tight fit, the native woods have a bit of give, a bit of wax on the spigot helps the lid push on, take care - not too tight or the lid will split,



Turning spigot

if it turns out too loose just turn off the spigot and have another go, leave the lid on.



Fitting Lid

Now bring up the revolving centre for support while shaping the lid and part of the body, sand, seal and wax, exotics tend not to need sealer just wax. Now you can use the drill bit as



Turning lid on body



a drive for the body, like we did for the whistle, and finish off the turning and finishing. You may need to ease the fit of the lid, just a light touch with 400grit should be enough to give a "pop" fit. You can after making a few, do the whole thing in about 20 minutes, once you have got the hang of working in native woods try the exotics. Enjoy this project and it uses up some of those odd bits of wood you have around the workshop.



Turning body



Finished needle case

## Have a Heart!

**Ron Davis**

### Bury St Edmunds Woodturning Club

Just as lockdown started, I received an email from the St Nicholas Hospice, Bury St Edmunds, asking if we could make a few holding hearts, they asked for 100, which seemed a lot, but we said we would try to make a few. We were given the sizes and they were just 45x45x15mm, they were given to patients near the end of their journey, and with lockdown no visitors were allowed, which was distressing for all concerned. A heart or a cross, would be given to the patient and one relative, and would be the only direct contact they would have.

I sent out this request to members and they began making the hearts, I soon had 63 and I laid these out on a table in bright sunshine and took some photos.



I came over all artistic and robbed the free bag which came with dog food, and took a photo. I then presented them to the Hospice, I added a couple of wooden rainbows which went in the Chapel.



The age range of our members making hearts, went from our youngest, aged 11, to a member in his early 90's.

Some made 3, whilst one member came up with 72 and 20 woollen ones knitted by his wife.


I do not know the total now, as members have sent their hearts direct to the hospice, from what I have been told the total now exceeds 250, with 20 woollen hearts and 32 crosses.

Not all these were given out by the Hospice; they told the care homes and were inundated with requests.



*Ashley Iles*  
woodcarving & turning tools  
made in the old tradition

**Precision Made Woodturning Tools**



*Ashley Iles, Solly Street c.1958*

**Send £1.50\* postage for our 49 page Catalogue and Price List**

**\*£5.00 Mainland Europe and Eire, £8.00 USA and Rest of the World**

Ashley Iles (Edge Tools) Ltd, East Kirkby, Spilsby, Lincolnshire PE23 4DD  
Tel: 01790 763372 Fax: 01790 763610  
Email: sales@ashleyiles.co.uk  
**www.ashleyiles.co.uk**

## A cautionary tale

### Brian Luckhaus

I would like to share an experience which recently occurred in my small workshop. I have been a hobby turner for over 20 years and have probably produced hundreds of items particularly bowls. I now turn using Nova 3000 DVR 2hp lathe with electronic variable speed controls a superb machine capable of most things. I was recently asked to make a bowl about 15 to 16 inches diameter.

I could not find a piece of timber sufficiently large enough to turn in traditional way but decided to turn an end grain bowl from a piece of Spalted Beech. Having cut a slice about 3in thick and just over 16 in diameter I trimmed it to round on my bandsaw to run free over the lathe bed -just under 16in and attached a face plate.

Here comes the start of my carelessness. I only had a 3in faceplate which has 4 screw fixings. I used only 45mm screws and mounted the blank. Turning at a start speed of about 200rpm and also using tail support I started to shape the outside of the bowl increasing the speed up to about 900rpm. So far so good. I removed the tail stock support in order to put on a spigot which I did. Having achieved a suitable shape I raised the turning speed up to 1000rpm to sand up to 600 grit and then applied some Cellulose Sanding Sealer. Again so far so good. Now comes the stupid part. I applied some wax finish and restarted the lathe to give a final polish. At about 900 rpm the lathe started to vibrate and needed the speed adjusting. I reached for the the control and pressed the button - wrong button - my concentration had lapsed and the

rpm went up. My workshop exploded like a small bomb. The bowl flew off the lathe breaking into three parts. I was hit heavily by a piece on my upper left arm and another piece shattered the workshop window, my tools were thrown around. It all happened so quickly that for a few seconds the world stood still.

My upper arm is black and blue but with some good fortune no bones were broken.



I had been standing slightly to one side which had this not been the case I would probably not be writing this tale.

Lessons to be relearned

1. End grain turning requires deeper screw fixing.
2. A 6in face plate should have been used with more screws
3. The tail stock support should have been used
4. Concentration at all times

The whole trauma has been a salutary lesson to me and I hope a reminder to others that woodturning can be dangerous if correct procedures are not followed.

It does not matter how long you have been turning safety rules should not be ignored. Concentration and patience.



**To remove the Survey;**

**Open the staples carefully and remove the sheet of paper.**

**Or cut each page out of the centre of the Newsletter.**



## One Day Pyrography Course

with  
**Bob Neill**



**Cost £90**

10 Long Croft, Aston-on-Trent, Derby DE72 2UH

**Tel:** 01332 792036

**Email:** bob.neill1@btinternet.com

**Web:** www.bobneillpyrography.co.uk





We are asking members to complete a survey on a number of aspects of the AWGB; what you like, what you don't, and what you want more of. There is a web version which can be found on our website, should you prefer to complete the survey there. You should be able to remove this survey from the middle of *Revolutions* without causing damage.

We want to hear your feedback so we can keep improving and innovating. Our aim is to use your responses to aid us in developing future programmes and strategies. Your responses will be reviewed, condensed and shared in a summary report in the next edition of *Revolutions*. If there is more feedback, or if you have further questions or comments, please do not hesitate to email Derek at [secretary@awgb.co.uk](mailto:secretary@awgb.co.uk) or call him on 01335 360388 / 07720 292047.

*The deadline for the survey is Sunday 10th January 2021.*

We are asking you to provide information about yourself so that we can contact you for further detail or clarify any points we may be unclear on. As a thank you, you will be entered into a prize draw for a £250 voucher with Axminster Tools and Machinery. If you wish to be entered, we will need your name, email address, telephone number and membership number.

**Send your completed survey to the AWGB Secretary  
Derek Puplett, AWGB Member Survey,  
Baldungan, Derby Lane, Shirley, Ashbourne, Derbyshire DE6 3AT**

Your name

.....

Your email address

.....

Your best contact number

.....

Your AWGB Membership number (if known).....

*You should have an AWGB membership card with your number on. Alternatively, your *Revolutions* newsletter address envelope has your membership number on the front.*

## Demographic questions

*This gives us more information, relating to you so that we can tailor your responses more appropriately*

What type of member are you?

- ☐ Individual member
- ☐ Family member
- ☐ Junior Member
- ☐ Overseas Member

Which age bracket do you fall into?

- ☐ Under 22
- ☐ 22-40
- ☐ 40-65
- ☐ Over 65

Which region are you based in?

- ☐ Scotland
- ☐ North
- ☐ Midlands
- ☐ South East
- ☐ South West
- ☐ International Membership
- ☐ Unsure

## Section 1 - Questions about the AWGB

*Firstly, we want to know about how you feel about the AWGB and the value for money it provides.*

**A. Do you feel that your AWGB membership fee gives value for money?**

Not very much      1      2      3      4      5      Very much so

☐      ☐      ☐      ☐      ☐

**B. Which of the following benefits are you aware of, that are available to you as an AWGB member? (please tick all that apply)**

- ☐ Members training programmes
- ☐ Discounts at a range of suppliers
- ☐ Free listing on the website for members offering demonstrations, tuition, commissions
- ☐ Discretionary Grant of up to £1000
- ☐ Quarterly *Revolutions* newsletter
- ☐ £50 for writing a page, and divisions thereof, of material published in *Revolutions* (*Hint and tips and how to articles*)

**C. What is the main reason you joined the AWGB?**

.....  
.....



**D1. How satisfied are you with the following aspects of the AWGB?**

1 = Very dissatisfied 5 = Very satisfied

	1	2	3	4	5	Not used
Frequency of communication	<input type="radio"/>	<input type="radio"/>	<input type="radio"/>	<input type="radio"/>	<input type="radio"/>	<input type="radio"/>
Content of communication	<input type="radio"/>	<input type="radio"/>	<input type="radio"/>	<input type="radio"/>	<input type="radio"/>	<input type="radio"/>
The Benefits of the AWGB	<input type="radio"/>	<input type="radio"/>	<input type="radio"/>	<input type="radio"/>	<input type="radio"/>	<input type="radio"/>
Quality of support from AWGB	<input type="radio"/>	<input type="radio"/>	<input type="radio"/>	<input type="radio"/>	<input type="radio"/>	<input type="radio"/>
Approachability of the AWGB Executive	<input type="radio"/>	<input type="radio"/>	<input type="radio"/>	<input type="radio"/>	<input type="radio"/>	<input type="radio"/>
Quality of online learning materials	<input type="radio"/>	<input type="radio"/>	<input type="radio"/>	<input type="radio"/>	<input type="radio"/>	<input type="radio"/>
Activities organised by the AWGB	<input type="radio"/>	<input type="radio"/>	<input type="radio"/>	<input type="radio"/>	<input type="radio"/>	<input type="radio"/>
Talk Turning online zoom meetings	<input type="radio"/>	<input type="radio"/>	<input type="radio"/>	<input type="radio"/>	<input type="radio"/>	<input type="radio"/>
Bi-annual seminar	<input type="radio"/>	<input type="radio"/>	<input type="radio"/>	<input type="radio"/>	<input type="radio"/>	<input type="radio"/>
Quality of training	<input type="radio"/>	<input type="radio"/>	<input type="radio"/>	<input type="radio"/>	<input type="radio"/>	<input type="radio"/>
Presence at shows	<input type="radio"/>	<input type="radio"/>	<input type="radio"/>	<input type="radio"/>	<input type="radio"/>	<input type="radio"/>
Travelling exhibition	<input type="radio"/>	<input type="radio"/>	<input type="radio"/>	<input type="radio"/>	<input type="radio"/>	<input type="radio"/>

**D2. Can you give any more details on your above answers?**

.....

.....

**E1. How satisfied are you with the following aspects of the Revolutions newsletter?**

1 = Very dissatisfied 5 = Very satisfied

	1	2	3	4	5	Not Applicable
Content of communication	<input type="radio"/>	<input type="radio"/>	<input type="radio"/>	<input type="radio"/>	<input type="radio"/>	<input type="radio"/>
Frequency of communication	<input type="radio"/>	<input type="radio"/>	<input type="radio"/>	<input type="radio"/>	<input type="radio"/>	<input type="radio"/>
Style	<input type="radio"/>	<input type="radio"/>	<input type="radio"/>	<input type="radio"/>	<input type="radio"/>	<input type="radio"/>
Information	<input type="radio"/>	<input type="radio"/>	<input type="radio"/>	<input type="radio"/>	<input type="radio"/>	<input type="radio"/>
Type of advertisement	<input type="radio"/>	<input type="radio"/>	<input type="radio"/>	<input type="radio"/>	<input type="radio"/>	<input type="radio"/>

**E2. Can you give any more details on your above answer relating to Revolutions?**

.....

.....

**E3. We are considering a 'digital only membership', where Revolutions would be delivered online, instead of in paper print. Would you like to see an option for this?**

- ☐ Yes      ☐ Yes - If there is a reduced fee for it      ☐ No - I prefer physical copies of Revolutions

**F. How satisfied are you with the following aspects of the AWGB Website?**

1 = Very dissatisfied 5 = Very satisfied- visit [www.awgb.co.uk](http://www.awgb.co.uk)

	1	2	3	4	5	Not Applicable
Content of communication	<input type="radio"/>	<input type="radio"/>	<input type="radio"/>	<input type="radio"/>	<input type="radio"/>	<input type="radio"/>
Frequency of communication	<input type="radio"/>	<input type="radio"/>	<input type="radio"/>	<input type="radio"/>	<input type="radio"/>	<input type="radio"/>
Style	<input type="radio"/>	<input type="radio"/>	<input type="radio"/>	<input type="radio"/>	<input type="radio"/>	<input type="radio"/>
Frequency of updates	<input type="radio"/>	<input type="radio"/>	<input type="radio"/>	<input type="radio"/>	<input type="radio"/>	<input type="radio"/>
Availability of forms	<input type="radio"/>	<input type="radio"/>	<input type="radio"/>	<input type="radio"/>	<input type="radio"/>	<input type="radio"/>
Web-based forms	<input type="radio"/>	<input type="radio"/>	<input type="radio"/>	<input type="radio"/>	<input type="radio"/>	<input type="radio"/>
Online membership renewals	<input type="radio"/>	<input type="radio"/>	<input type="radio"/>	<input type="radio"/>	<input type="radio"/>	<input type="radio"/>
H&S guidance	<input type="radio"/>	<input type="radio"/>	<input type="radio"/>	<input type="radio"/>	<input type="radio"/>	<input type="radio"/>

**G. Would you like to see a member's area of the website? This would have material that is just for members which would be updated regularly with new and different content.**

- ☐ No
- ☐ Yes - with a focus on learning material and resources
- ☐ Yes - with a focus on articles and stories
- ☐ Yes - to both
- ☐ Other:

H1. If you have attended virtual demonstrations / Interactive Remote Demonstrations (IRDs), what is your general opinions of them?

.....

.....

H2. Would you like the AWGB to put on a 'Virtual Seminar' in addition to the planned seminar next year?

- ☐ Yes
- ☐ No
- ☐ Maybe - Depends what is on (please expand below)
- ☐ Just the planned seminar on 24-26th September 2021

H3. If you would like to see a Virtual Seminar, what would you like to see?

.....

.....

H4. Would you like to see regional mini-seminars?

- ☐ Yes                      ☐ No                      ☐ Not Applicable

I1. The Chairman of the AWGB sends e-bulletins via email occasionally as a method to communicate with you. Do you receive the communication?

- ☐ Yes                      ☐ No

I2. What are your views on the e-bulletins? Please comment on areas such as frequency and content.

.....

.....

J1. What other benefits would you like the AWGB to offer?

.....

.....

J2. Is there anything else the AWGB could do to support or help you?

.....

.....

## Section 2 - Education and Training

*This section will focus on learning resources and training provided by the AWGB, as well as asking for your opinions on some ideas we have.*

A1. Where attended, how satisfied were you with the training that the AWGB provide?

1 = Very dissatisfied 5 = Very satisfied

	1	2	3	4	5	Not applicable
Workshops	<input type="radio"/>	<input type="radio"/>	<input type="radio"/>	<input type="radio"/>	<input type="radio"/>	<input type="radio"/>
The WCT Certificate Course	<input type="radio"/>	<input type="radio"/>	<input type="radio"/>	<input type="radio"/>	<input type="radio"/>	<input type="radio"/>
Let's Teach Turning course (Instructor and tutor training and assessment)	<input type="radio"/>	<input type="radio"/>	<input type="radio"/>	<input type="radio"/>	<input type="radio"/>	<input type="radio"/>
Demonstrator Training Course	<input type="radio"/>	<input type="radio"/>	<input type="radio"/>	<input type="radio"/>	<input type="radio"/>	<input type="radio"/>
Training Grants	<input type="radio"/>	<input type="radio"/>	<input type="radio"/>	<input type="radio"/>	<input type="radio"/>	<input type="radio"/>

A2. For the session that you attended, could you provide any further comments on your score.

.....

.....

B. Have you used the online resource 'Let's Teach Turning'? If so, please provide an overview of the positives and areas for improvement.

Both presented and pre-read material

C. We are looking to enhance your membership by building learning resources for our members. Please rate the following on how valuable they would be to you;

	1	2	3	4	5	No opinion
Specific resources for beginners	<input type="radio"/>	<input type="radio"/>	<input type="radio"/>	<input type="radio"/>	<input type="radio"/>	<input type="radio"/>
Specific resources for intermediates	<input type="radio"/>	<input type="radio"/>	<input type="radio"/>	<input type="radio"/>	<input type="radio"/>	<input type="radio"/>
Specific resources for advanced turners	<input type="radio"/>	<input type="radio"/>	<input type="radio"/>	<input type="radio"/>	<input type="radio"/>	<input type="radio"/>
A physical log book / passport of achievements	<input type="radio"/>	<input type="radio"/>	<input type="radio"/>	<input type="radio"/>	<input type="radio"/>	<input type="radio"/>
An electronic log book / passport of achievements	<input type="radio"/>	<input type="radio"/>	<input type="radio"/>	<input type="radio"/>	<input type="radio"/>	<input type="radio"/>
Online AWGB Video resources	<input type="radio"/>	<input type="radio"/>	<input type="radio"/>	<input type="radio"/>	<input type="radio"/>	<input type="radio"/>
Online supporting written educational resources	<input type="radio"/>	<input type="radio"/>	<input type="radio"/>	<input type="radio"/>	<input type="radio"/>	<input type="radio"/>

D1. We are considering building a library of material using video, audio and written material. We may look to use specific tutors for specific elements such as 'Spindle turning with Joe Bloggs' 'Colouring with Jane Smith' 'Segmented turning with John Smith' etc. Would you find this a valuable addition to your membership?

Not valuable	1	2	3	4	5	Very Valuable
<input type="radio"/>	<input type="radio"/>	<input type="radio"/>	<input type="radio"/>	<input type="radio"/>	<input type="radio"/>	

D2. What topics or aspects of woodturning would you like to see the AWGB build resources for?

E1. What workshops would you like to see the AWGB deliver?

E2. In 'normal' times without the restrictions imposed by Covid-19, are there any barriers for you attending courses / workshops? (Tick all that apply)

- ☐ Too far away to get to
- ☐ Not convenient to get to by public transport
- ☐ Time of the sessions aren't appropriate
- ☐ Dates of the session aren't appropriate
- ☐ Cost of getting to the training is too much to justify

E3. How can the AWGB make their workshops more accessible to you?

E4. Do you have any other suggestions regarding training?

Would mind if we contacted you for further information or clarification on any of your points?

- ☐ Yes - Please feel free to contact me
- ☐ No - Please do not contact me

*Thank you for taking the time. This feedback is incredibly valuable.  
Please do ensure that you have entered your details so that you are  
entered into the prize draw for a £250 Axminster Tool and Machinery.*





# AWGB International Woodturning Seminar

**24th - 26th September 2021**

**Yarnfield Park Training and Conference Centre**

**Stone Staffordshire ST15 0NL**

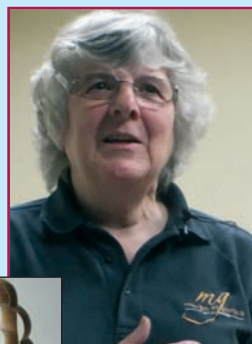
24-26 SEPTEMBER

**2021**

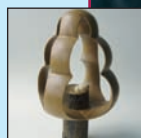
**AWGB**

INTERNATIONAL  
WOODTURNING  
SEMINAR

*Your turn to be inspired*



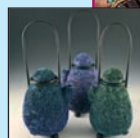
Margaret Garrard  
UK



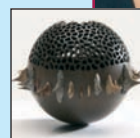
Emmet Kane  
Ireland



Jacques Vesery  
USA



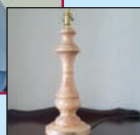
Jocelyn Naigeon  
France



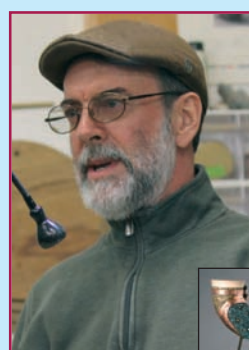
**10 of the best International Turners from around the world showing their skills and passing on their experiences and knowledge, freely and with passion.**



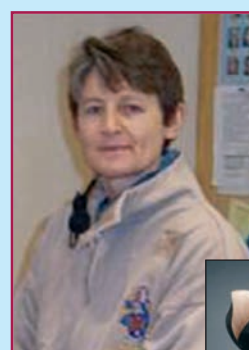
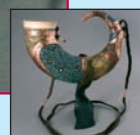
Willie Creighton  
Ireland



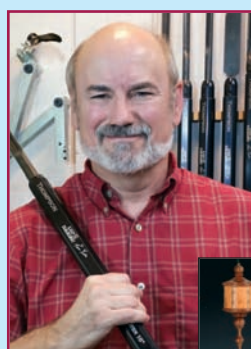
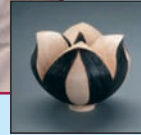
Mary Ashton  
UK



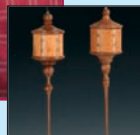
Michael Kehs  
USA



Jay Heryet  
UK



Tim Yoder  
USA



Lots of demonstrations in individual rooms with full audio/visual equipment so you don't miss a "cut".

We will have more one-slot presenters in addition to the ten headliners.

Lots more masterclasses.

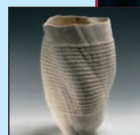
Refreshment breaks and lunch provided each day. Throughout the event we have trade stands to visit, a raffle and of course the instant gallery where we encourage everyone to bring up to 3 pieces of their best work to display.

Tickets are on sale details on the website  
**[awgbwoodturningseminar.co.uk](http://awgbwoodturningseminar.co.uk)**

*Keep an eye on the website and facebook for up to date information.*



Yan Marot  
France



## AWGB International Seminar 24<sup>th</sup> to 26<sup>th</sup> September 2021

## Booking Form

The accommodation comprises en-suite double rooms, including 59 twin rooms, and there are a number of accessible rooms. We are pleased to offer a range of attendance options. Please select the quantity required. If you have any particular needs or requests please note them below. (All costs include VAT)

**Early Bird Discount applies if you pay 50% before 31 January 2021.**

Package	Description	Cost	Early Bird Cost	Quantity	Total Cost
A	Full Weekend incl Accommodation and Meals	<b>£445.00</b>	<b>£405.00</b>		
AT	Full Weekend incl Accommodation and Meals with Twin room for <b>Two People</b>	<b>£830.00</b>	<b>£780.00</b>		
AD	Full Weekend incl Accommodation and Meals with Double room for <b>Two People</b>	<b>£830.00</b>	<b>£780.00</b>		
B	Full Weekend incl Lunches, No Accommodation or Evening Meals	<b>£325.00</b>	<b>£305.00</b>		
C	Friday incl Lunch, No Evening Meal	<b>£95.00</b>	<b>£90.00</b>		
D	Saturday incl Lunch, No Evening Meal	<b>£140.00</b>	<b>£130.00</b>		
E	Sunday incl Lunch	<b>£115.00</b>	<b>£105.00</b>		
F	Saturday incl Lunch & Evening Meal	<b>£160.00</b>	<b>£150.00</b>		
G	Full weekend shared room accommodation & meals – no demos	<b>£215</b>	<b>£200</b>		
Total Cost					

Name (as you would like it on your badge)	
Address (inc Postcode)	
Email address	
Tel Number	
Membership Number (if applicable)	
Please advise any particular requirements (diet, access etc)	

**Data Protection:** The information you provide on this form will be used solely for dealing with you as a member of the AWGB; to inform you of AWGB news and to administer your attendance at AWGB events. By signing this form you are giving consent for the AWGB to use your data as described in our privacy policy which can be found at [www.awgb.co.uk/privacy-policy](http://www.awgb.co.uk/privacy-policy). Your data will be used and stored in accordance with this policy.

### Payment:

**Early Bird:** 50% deposit on booking before 31 January 2021, remainder due 4 weeks prior to the seminar

**NB** If you are unable to attend your deposit may be refunded at the discretion of the AWGB.

I have paid by cheque/bank transfer/international bank transfer (delete as appropriate). We are unable to take card payments by telephone. Card payments can be made on the website by PayPal or by sending a payment in PayPal to [awgbtrading@awgb.co.uk](mailto:awgbtrading@awgb.co.uk)

Signed:

Date:

Payment by cheque payable to AWGB Trading Ltd, or

Bank transfer to sort code 09-01-28, Account number 41132390 (use family name/2020 as reference) or

From overseas IBAN: GB88ABBY09012841132390 (use family name/2020 as reference)

Please send this form (with cheque if appropriate) to: Stephen Evans 3 Teewell Hill, Staple Hill, Bristol BS16 5PA

Tel: 07922 091586 Email: [seminar@awgb.co.uk](mailto:seminar@awgb.co.uk)



Company Registered Number : 8135399.  
Registered Office : 36 Crown Rise, Watford, WD25 0NE.  
Registered Charity : 1150255.  
[www.awgb.co.uk](http://www.awgb.co.uk)

## Application for Seminar Scholarship – 24th to 26th September 2021

(AWGB Members Only)

Name	
Address	
Telephone No	
Email address	
AWGB membership No	
Date of Birth (If under 22)	
Branch/Club (if applicable)	

**Data Protection:** The information you provide on this form will be used for dealing with your application. By signing this form you are giving consent for the AWGB to use your data as described in our privacy policy which can be found at [www.awgb.co.uk/privacy-policy](http://www.awgb.co.uk/privacy-policy). Your data will be used and stored in accordance with this policy.

Use the box below to tell us why you want a scholarship and how you think it be of benefit to you. You should also give an indication of your financial status (any information given in this regard will be kept confidential).

The closing date for applications is 30<sup>th</sup> April 2021. After this date the Trustees will review the applications and award a number of scholarships. The Trustees' decision is final.

--

Signed:

Date:

Parent/Guardian Signature if under 18:

Please return the application form to Derek Puplett at [secretary@awgb.co.uk](mailto:secretary@awgb.co.uk)



## SOME OF THE AWGB EXECUTIVES INTRODUCE

### Darren Crisp

#### Scotland Region Rep.

I'm Darren Crisp, the new Scottish Representative for the AWGB.

My profession is Civil Engineering and I've spent over 30 years working in large organisations in various roles such as Engineer, Project Manager, Contracts Manager, eventually achieving the status of Chartered Manager. I am a member of two professional institutions, the ICE and a Fellow of the CMI.



In 2013 I married my Italian wife, it was then I started to question my work life balance and the enjoyment I was getting from my career, in 2016 my wife fell pregnant, we took stock of our lives and decided it was time to make both a career and lifestyle change, once our beautiful daughter arrived in early 2017 I was lucky enough to be able to stop work, become a full-time father and follow my ambition to turn my passion for woodturning into a new career as a professional woodturner and tutor.

I was very fortunate to be able to build a workshop at home and memories flooded back to me, I think I was around 8 years old in my uncle's workshop, holding a drill in a vice, with a small piece of wood in the chuck, sharpening a screwdriver on a grinder and starting to turn, not something I would recommend now, but that's how it was back then!

I've always loved working with wood and I've always had a workshop of some description wherever I've lived and like most of us it started with an old tiny shed, as the passion grew so did the amount of tools, requiring shed extensions, garage takeovers and eventually a purpose built workshop.

In 2010 I took up woodturning more seriously, I researched equipment and bought my first serious lathe, since then my workshop has grown and so has my passion. I decided the best way for me to improve and learn the correct way to turn was to undertake some formal training, I met professional turner Tracy Owen and have never looked back, the best investment I've made in my turning!, Thank you Tracy. I joined my local woodturning club Strathclyde Woodturners where I also found a wealth of knowledge and enthusiasm, of which I'm now the Treasurer.

My work is quite varied, bowls, hollow forms, platters, boxes, pens, goblets, anything that can be turned. I enjoy working with texture, colour, sandblasting, sometimes combining some or all of these.

As my skills improved I decided to take additional classes with world renowned Master Turner Stuart Mortimer, and found a new love of spiral work, we quickly became close friends and I owe a huge thanks to Stuart for his encouragement and faith in my skills.

My dream was to take up turning as a profession, I built a 12m x 6m workshop and stocked it with various machinery, including four lathes for teaching, two small lathes, a Jet 1221VS and a Vicmarc VL100, and two larger lathes, a Jet 4224 and a VB36. I completed the the Worshipful Company of Turners delivered by the AWGB 'Certificate in Woodturning' and I qualified as an AWGB Approved Tutor.

In 2018 I was invited to enter my work into the Worshipful Company of Turners competition that November, I visited Carpenters Hall, both my pieces won commendations, it was then I realised that becoming a member of the Worshipful Company as a liveryman was a possibility, something I never thought possible.

Very quickly I settled into a situation where I knew where I wanted to go within the craft, I feel I'm equipped and comfortable to move on within the craft, by teaching young people in particular. I'm hoping to facilitate a young turners training unit within my workshop.

I'm now on the fringes of the world of Woodturning. My ambition is to produce high quality work for galleries and collectors, my next step is to apply to the RPT to be accepted onto the Register of Professional Turners. I am fully committed to making woodturning my second career and contribute as much as possible to the craft.

I'm very fortunate to be able to follow a passion I love and work from home, family life is very important to me and having this balance is truly amazing.

When I look back, my life is now a far cry from my beginnings, I have spoken to a few professional turners who have followed a similar routes.

Now, my greatest pleasure is keeping the craft of woodturning alive - both through my own projects and through teaching others how to turn, passing on my knowledge and enthusiasm.

I hope to be a useful asset to all Scottish Members and to assist and advance the craft as much as possible through the Scottish Clubs.

I look forward to meeting up with clubs and members once we get back to a more normal life, in the meantime I hope everyone stays safe and keeps turning.



**W.L. West & Sons Ltd**  
Selham, Petworth, GU28 0PJ  
t: 01798 861611 f: 01798 861633

- Hardwoods
- Wood finishes
- Australian Burrs
- Exotic Timbers
- Woodturning Blanks
- Woodturning Courses (see website for dates)
- Woodworking Machinery
- Woodworking Tools
- Fencing, Gate & Decking Products
- Bespoke Garden Furniture



**RECORD POWER**  
SHEFFIELD - ENGLAND

**Timber, Tools & Machinery  
for D.I.Y • Carving  
Woodturning • Furniture Projects**  
shop@wlwest.co.uk

Off A272 Midhurst to Petworth road opp The Halfway Bridge Inn

Open: Mon-Fri 8-5 & Sat 9.00-1.00pm  
**www.wlwest.co.uk**

## THEMSELVES

### Bryan Milham

#### Soth West Region Rep.

My background is that of an Army electronics engineer, serving 23 years in the REME. I started turning by accident over 20 years ago while I was still serving in the military. I was into woodwork and had bought an old British woodwork machine, a Coronet Major. For several years all I used was the woodwork end. Then one day I saw Reg Sherwin turning at a tool show.



When I had bought the machine it came with 6 tools so I decided to have a go. Not knowing any better I put a piece of wood between centres and with the pullies set for the saw table, 5000rpm, it hit the off button faster than I'd hit the on button. The wife signed me up for some lessons at the local Adult Education Centre and the rest, as they say is history.

Having decided that I wanted to be a Spindle Turner, I later paid for a week with Reg and asked him to teach me to use the Skew. You don't learn the skew in a week but he taught me the basics and 20 years of practicing have made me proficient. To this day some of his words still ring in my ears today and as I am now an AWGB Tutor, I hear myself saying them to some of my students.

As a club level demonstrator, I try to use and encourage the use of the skew as much as possible.

I gave up sitting behind a desk nearly 3 years ago to become a self employed woodturner and that has brought with it more lessons as well, but it is enjoyable and although not nearly as well paying, more rewarding at the end of the day.

## AWGB Merchandise

### Lapel Badges

Brass & enamel

£3.50 p&p included



### Cloth Badges

For sewing on smocks etc.

£4.50 p&p included



### Windscreen Sticker

£1 plus sae

(standard letter rate)



**All available from the  
AWGB Derek Puplett (secretary)  
(details on page 3)**

**Make all payments to AWGB**

# Robert Sorby

PROUDLY MADE IN SHEFFIELD, ENGLAND



## THE No.1 CHOICE For Woodturners!

### THE MOST COMPREHENSIVE CHOICE OF WOODTURNING TOOLS ON THE MARKET...

- Core Woodturning Tools
- Woodturning Sets
- Specialist Woodturning Tools
- Sovereign System
- Woodturning Accessories
- Measuring Tools
- Sharpening Tools

## ProEdge The Ultimate Sharpening System



Visit our website to find your nearest stockist

## [www.robert-sorby.co.uk](http://www.robert-sorby.co.uk)

Robert Sorby, Athol Road, Sheffield S8 0PA ENGLAND

Tel: +44 (0) 114 225 0700 E-mail: [sales@robert-sorby.co.uk](mailto:sales@robert-sorby.co.uk)

FOLLOW US ON SOCIAL @ROBERTSORBY





## A Revelation in Revolutions

**P. J. Martin - Chairman – Kent Woodturners**

At last someone has asked the questions that many clubs and a great many members have been asking. These questions are asked by someone who has been on the top table and has seen the workings of the AWGB. If he believes, as I do, that the AWGB has lost its way then is it safe to assume that there is a lack of cohesion within the committee which would, perhaps, explain why there have been so many changes in a very short space of time.

Surely the present situation was crying out for some guidance from our national body and yet, apart from very complicated details about on line presentations, which is surely beyond most 70+ members, many of whom do not even own a computer, we have had little in the way of help to get through what must be a very difficult time for all clubs.

If we are to survive, and that will dictate whether the AWGB will survive, we need to be given all the help available in how we should handle meetings once we do start back, if that happens, how we should be dealing with subscriptions and that should include some movement in the subscriptions that we have to pay to AWGB and what we can expect from the professionals once we reach normality. As Colin Smith points out, the costs that the committee bear are considerably reduced with meetings being held on Zoom and the like and surely if there is likely to be a large reduction in the number of existing members re-joining the AWGB should lead the way in resetting the membership structure to acknowledge the changing times. We, as a club, will certainly not be able to charge members for a full year's activity that we have been unable to provide and the AWGB must surely do the same.

We all require guidance on how we are to proceed in the new world and to offer nothing to your members is a dissolution of duty if we are to believe that the AWGB is the main body representing woodturners in the UK. It is time that the committee got together and decided what they are planning for a very different future and how they are going to disseminate that to whatever members remain. Why have so many of the committee moved in and out of post in such a short space of time. This needs to be explained as it did not happen in the past and my association with AWGB goes back nearly 20 years and you could always get in touch with someone that you knew and who knew you. That is no longer the case. Currently I am familiar with only 3 of the Trustees which speaks volumes for the way things have changed and there must be a reason.

In the same magazine there was highlighted another issue that I thought should have been high on the Trustees' agenda for advice to Member clubs and that was the benefits etc of registering as a charity. Even something as fundamental as ensuring that members would not be held personally liable for accidents etc on club premises or during club activities does not seem to have warranted attention from the AWGB trustees when addressing their members until very late in the day. Finally the new Treasurer has seen fit to offer that advice but what has been happening in the years prior to his appointment. The AWGB became a charity some years ago but I do not recall any assistance being given to protect your members by advising them to take similar action.

Colin Smith seems to sum up the thoughts of many when he says "GET A GRIP" and think of your members whilst they still exist. Now is the time to be pro-active.



**Stiles & Bates**  
**The Woodturning People**

**Shop    Free Mail Order Catalogue    Website**

Upper Farm, Church Hill, Sutton, Dover, Kent. CT15 5DF  
Tel: 01304 366 360  
[www.stilesandbates.co.uk](http://www.stilesandbates.co.uk)  
[sales@stilesandbates.co.uk](mailto:sales@stilesandbates.co.uk)



# Reg Sherwin– Woodturning Royalty

## Jane Charles Regs' eldest daughter

On August the 10th Reg Sherwin sadly passed away after living with dementia for the last 6 years. Although he had lost his quick mind for story-telling and jokes, he recognised us until the end and will be sorely missed by everyone who knew him in his jam packed life. This amazing life 'revolved' around woodturning, the craft and profession he held close to his heart for over 50 years. In 2012 he wrote his own woodturning CV, so together with memories, I've been able to put this together. Apologies for any slight errors.

Reg Sherwin was a self-taught woodturner who's first practical interest in the craft was kindled by the late Geoff Peters in 1966. By 1968 he had gone through the usual hobby turner stages of power drill lathe and homemade lathes. He took voluntary redundancy in 1969 and set up his business with a 'real' lathe which was a Coronet Minor combination machine, in our garage at home near Bromsgrove, Worcestershire.

He soon had a workshop in The Wharf at Stoke Prior and was employing up to 9 men, although he didn't enjoy the admin that employing people required. 'Turn-right Woodworking Company' (mum came up with that name) made a variety of brush handles, wooden barrels for little shire horses to pull in carts and reproduction warming pan handles amongst many other things. In the early 80's the business then took a more creative direction, he was working on his own and he started doing large commissions, he could turn wood up to 10' between centres. (see image)

Reg's first woodturning article was published in 1981 and he continued to write for GMC Publications, initially titled 'Diary of a Woodturner' his regular articles became 'Reg Sherwin's Column' and the last one, numbered 113 appeared in November 1998. Reg then wrote for Highbury House Communications, formerly Nexus, for around 5 years. His regular article "Reg Sherwin's Piece" was published in 'The Woodturner' originally a bi-monthly magazine which became part of 'The Woodworker' magazine. Reg's Book 'Pleasure and profit of woodturning' was published in 1988. Reg started demonstrating at about the same time as his first article was published and in 1987 he started teaching woodturning seriously.

He was one of the 12 founding members of the Association of Woodturners of Great Britain (AWGB) in 1987, with the membership number 007! Writing the newsletters at home with Helen my younger sister stuffing envelopes for the members to get them in the post, I had left home by this time.

He then set up 2 local woodturning groups, one in Droitwich and one in Burcot. Around 1989 he was invited to become the resident woodturner at Avoncroft Museum of buildings where he enjoyed demonstrating to the public on high days and holidays and running his business from there. Avoncroft is famous for its re-enactment weekend events and the

'medieval' people would often get him to turn authentic reproduction bowls for their feasts and toggles for their costumes. His writing and demonstrating skills took off in the early 90's and he and mum went to the USA 3 times and South Africa to speak and teach at various woodturning groups. He also travelled to Belgium, Ireland and the Isle of Mann on his own for talks. He collaborated with a few tool manufacturers and then demonstrated their tools and machinery at various trade shows up until the early 90's, promoting different tools he had designed.

He was a regular course tutor for a number of years at John Boddy's Fine Wood and Tool Store, Boroughbridge, North Yorkshire and also at Woodcut Trading Co. Bexhill on Sea, East Sussex.

He was one of the demonstrators at the 1989 International Woodturning Seminar at Loughborough, England and in 1993, was an invited guest turner at the World Turning Conference, Philadelphia USA. Also at the Irish Woodturners Guild Annual Seminar in Kilkenny.

He was one of the six invited professional instructors at the 2004 Teenager Turners Training event, which was held at Belper, Derbyshire. This was a new initiative organised by a family who have two teenage turners and who saw the need for some specific instruction. The course ran for two days and was so successful that TTT2 ran for 3 days in 2005 at Reg's workshop in Avoncroft Museum of Buildings. This led to him being very much involved in planning, as well as teaching at the event, which attracted no fewer than 19 teenagers. In August 2005, Reg was granted Life Time Membership of the Association of Woodturners of Great Britain for his contribution to Woodturning.

He also ran Bromsgrove Fencing Group (BFG) for around 20 years after taking up fencing in the army, he was a fully qualified coach running the group from South Bromsgrove High School, also teaching in Redditch and Kidderminster, he was out fencing, 4 times a week! Inspiring dozens of people over the years to take up this great sport. Bromsgrove was a hub of fencing competitions in late 70s and 80s thanks to the effort of Dad. He was always ready to support new groups as well, lending out kit to visiting teams if needed – they would then beat us with our own kit....didn't think that one through obviously.

He retired from teaching and writing gradually, spending time travelling with mum and playing Grandad to his 5 grandchildren. One of the last things he did before retiring was to visit the primary school where my children were and demonstrated for their 3 classes. They were very proud of their grandad and took orders for rolling pins and dibbers. He had not lost his sharp eye for target shooting from his army days and was a valued member of local shooting groups until 2014. He was diagnosed with dementia in 2014 and spent his last 13 months at a care home in Bromsgrove.

I was talking to Rosemary Wright and her partner last year in Milton Keynes (where I now live) and told them who my dad was, they said 'Reg Sherwin!? Woodturning Royalty' – how wonderful that he has left such a legacy.

He leaves his wife Anne, children Jane and Helen and 5 grandchildren.

5th January 1937 – 10th of August 2020

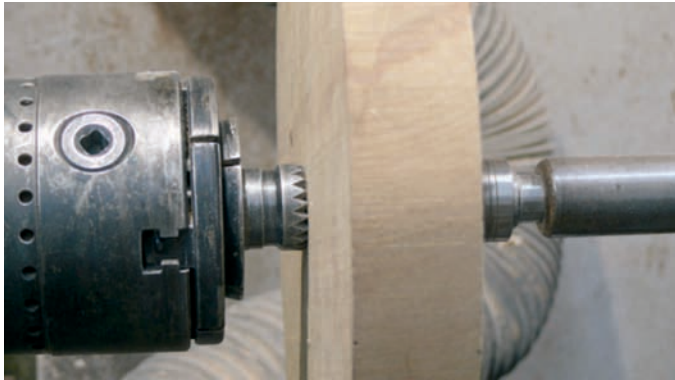




## 'The whoops cut'

### David Ritchie

It was during a recent club zoom meeting that the comment was made "we all make a mistake and go through the bottom at some stage" and if I make a mistake how to correct it. I have also been asked recently about mounting between centres particularly with blanks that are 25/40mm thick or where a screwchuck could cause problems further down the line. Dealing with the second item first —.



Providing a flat surface is used for the steb centre which is mounted securely in the chuck the other side only requires the tailstock to have a secure pressure point to make a safe and efficient method to hold the blank. This method also has the advantage of catering for blanks of varying thickness and undulations in the surface, making it easier to centralise blanks and save wood

Always make sure your tools are sharp and the tenon size and angle of the spigot is suited to the chuck. The next stage is to cut a tenon and decide if this is going to be the top or bottom of the bowl if you have not already done so. I chose to prepare the design of the base at this stage and frequently complete right down to and including the final finish.



With this piece I intended to curve the bottom and top and leave it standing on its own base not on the rim. This would give it a floating effect and as I intended to add some colour a clean edge was paramount.

This brings us to the first question, how to keep it as a bowl not lampshade. Knowing the thickness of the blank is vital and



must include the spigot recess. I use two tools the first one being a 7" double ended calliper and the second a micrometer to measure the end not in contact with the wood

Having measured accurately I make a note of the reading on the blank in case the calliper gets moved or used again, but also keep the calliper set to use later.

You are now able to reverse the blank and because I wanted to mirror image the shape of the bottom on the top I marked out the reference lines on the surface. Remember this is how I do it, it is not the only way but it suits me. The blank can now be shaped and the bowl area defined.



Most of the bowl is shaped using a bowl gouge, using the reference points as a guide if you wish, but I find a finger nail profile on a spindle gouge, (when sharp), gives a very good finish using a pull cut. The tool rest needs to be as close as possible for this, too much over hang spells disasters, so take care. Used correctly this will give fine shavings and a good finish.

When you have finished the bowl rim so that an accurate measurement can be made, offer up the micrometer which





will show clearly how much more can be removed. Using a bowl gouge, turn the bowl centre making single complete cuts will give a good finish finally go through the grits down to 600.

The "whoops" cut is something we have all done over time and I believe it is what sorts out the 'men from the boys' it is not the mistakes we make but how we correct them and learn from every cut we make that's important. The philosophy must be down to my age.



Because the outside of this piece was to be black in ebonising lacquer I made the button from Ebony but then it did not photograph detail clearly. Therefore the following photographs were made using a different wood. Depending upon the size of the hole and thickness of the wood, there are a number of ways to correct the problem, this one was engineered for the job and the button could be fixed from the top. I have had occasion to turn a pedestal for the base and fit it in two parts, however the principle is the same.



Clean up the hole and measure the diameter, allow at least 2mm extra for the button to sit on the surface and scribe the two sizes on the intended wood.

Take your time turning this as you need the best possible fit, offer up the bowl to ensure that the part is deep enough and fits the hole, also leaving enough of the larger section before parting off.

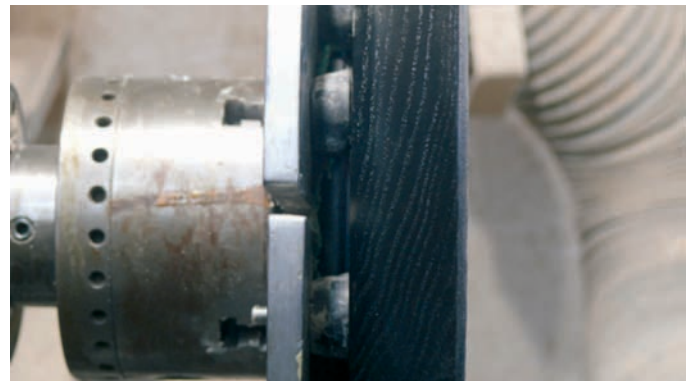
When you part off don't worry about the excess as this can be removed once the glue has set.

The top section shown will go through the bowl



(approx 3mm thick,) leaving the second section sitting on the inside bottom of the bowl this can be refined when adhesive has dried and the bowl remounted.

To clean up the underside I remount using Cole jaws.



Keep the speed down and make light but positive cuts.

The "bottom" can now be cleaned up and the "nib" if left behind from a previous parting off can be removed.

The piece can now be sanded signed and polished as required.

The blank may now be returned to the chuck, mounting in it's original spigot and the inside finished in your preferred fashion.



n.b. I have tried to match the grain in the past and found it very difficult, it is better to recognise the error and make a feature of it.

Better still don't make the error in the first place!

I did mention earlier that I had intended to add colour, on this piece I used Ebonising lacquer and Hampshire sheen gold paste.





**The AWGB is launching a monthly competition, which is only available to members. This competition will be based around a particular theme each month, the reward being a £50 voucher to the winner of the competition. We want to see and hear about your pieces.**

We would like to encourage all members of all skill levels to take part and enter. Photos, no matter how delightful, will not win the competition by themselves. This is a show AND tell competition. You will be notified in Revolutions of the themes or subjects each quarter as well as via our social media links which we encourage you to follow. If you do send any entries in, please do let us know your social media links and we'll share them on your behalf. We will be using the hashtag #AWGBShowandtell, so do tag that as well. The full rules can be found on our website under 'events' or by going to this webpage <https://www.awgb.co.uk/show-tell/>. On the website there will be a gallery of entries, as well as a reminder of the themes and winning entries.

**January - Valentine's Day** - how could you incorporate that theme into wood turning? Engraving cupid, different wood coloured hearts, red colouring? you decide. It may even stop you forgetting to get that special someone something this year!

**January prize - G & S Specialist Timber £50 voucher and £50 of Blanks**

**February - Natural edge** - Whether it be a bowl, vase, or a whole host of other creations, the name of the game this month is to make something with a live/natural edge on part of the piece. Instead of making this a feature on the rim of a bowl, how about trying it as a feature on a bead? How about including some segmented turning as part of it? The limit is your imagination (and how much bark you have).

**February prize - Stiles & Bates £50 voucher and £50 of Blanks**

**March - Green wood warping** - The end of March is typically the end of the coppicing season. This month's theme tasks you to use green wood and use the drying process to create interest. Hats can be made this way by controlling the drying process. What spin can you put on it?

**March Prize - Turners Retreat £50 voucher plus a further £50 voucher by Turners Retreat**

## Overview

Show and tell is a way for you to share your material to our members of the AWGB and be part of a bit of friendly competition. We will set a project, style, or theme for you to produce each month. The winner will receive a £50 voucher (not redeemable for cash) for one of our corporate suppliers which will vary month by month. There are a number of elements that will be judged to find the winner by a panel of AWGB volunteers and the corporate supplier. Please see the judging criteria. Email submissions should be to [showandtell@awgb.co.uk](mailto:showandtell@awgb.co.uk) Postal submission should be sent to our secretary at; AWGB Show and Tell, Baldungan, Derby Lane, Shirley, Ashbourne, Derbyshire DE6 3AT

By sending us a submission, you agree for the AWGB to reproduce your photo and prose and edit it as we deem appropriate. This may be for another purpose later down the line where full credit will be given. Winners and runners up will be published in revolutions as well as on our website and social media pages each month. You are welcome to send in your social media or website links and we will publish them alongside the winning entries.

## Deadlines

Submissions for a particular month's competition will need to be sent before the end of that month for both postal and electronic submission.

For example; A show and tell that is announced in mid-October for November, will have a closing date of the 30th November, with the winner being announced in December.

December's show and tell will be announced in mid-November, with the winner being announced in January – etc. There will be three months' worth of competition in revolutions as well as on the show and tell page on the website.

For postal submissions, we will get in touch with you by phone to let you know if you have won and how to claim the voucher shortly after.

## Rules for entry

- Three photos showing different views must be sent in and must be sufficiently well lit and of a high enough resolution for us to judge - Please send 'original' quality photographs and do not reduce the image resolution. However, please do not send files such as 'RAW' or similarly large files unless absolutely necessary.
- There is only one entry per member, per month.
- Please label your photos with the entry year and month, as well as your name eg – 202011Jane Smith\_Colouredbowl1; 202011JaneSmith\_Colouredbowl2. This will be incredibly helpful to the judging panel.

The photos must have some written material to support the entry, the following list is not exhaustive, but may be a good starting point to start writing

How did you decide to tackle the project  
What wood did you use?  
How did you finish it?  
What challenges did you overcome?

- Please send the written material in alongside the photos in a word document.
- All entrants give their consent for the AWGB to publish any material supplied in any printed or electronic medium they choose.
- The material must be your own work.
- You must provide your full name, membership number, telephone number and email address if you have one.
- Please do not include photographs of people with your entry and particularly not photographs of anyone under 18 years of age.
- Officers and trustees of the AWGB can enter the competition but are not eligible to win a voucher.
- The AWGBs decision is final.
- **Data Protection:** The information you provide as with your entry will be used as part of the administration and judging of the competition and your name and supplied material will be used in any publications the AWGB use. By entering you are giving consent for the AWGB to use your data as described here and in our privacy policy which can be found at [www.awgb.co.uk/privacy-policy](http://www.awgb.co.uk/privacy-policy). Your data will be used and stored in accordance with this policy. Entrants under 18 must also have their entry form signed by a parent/guardian.

### Criteria for judging the work

We would like to encourage all members of all skill levels to take part and enter. Photos, no matter how delightful, will not win the competition by themselves. This is a show **AND** tell competition.

The general criteria for judging will be as follows;

Interpretation of the month's set subject / theme

Quality of turning

Stylistic elements and appropriate use of them.

Creativity in making the final piece

Details of supporting written material

Other non-tangible elements will have a part to play - humour, creative use of photography etc

We will not be judging on elements such as spelling or grammar so please do not be dissuaded by these factors. We aren't expecting professional standard photography but we do need to be able to clearly see what we are judging.

The panel will meet and deliberate after the month's competition has closed. If you have not heard from us by the middle of the following month, please assume you have not won. You can request feedback on the material that you sent in and the AWGB will try to provide you with constructive comments for your consideration. However, we cannot promise a timeframe for the critique.

**Dont forget to renew  
your membership!**

# canoodle with your dark side

[staffordshireblack.co.uk](http://staffordshireblack.co.uk)

NEW!

ffordshire Black  
traditional solutions for wood

Staffordshire Black  
traditional solutions for wood

Tannin Juice

Ebonising Juice

**10% OFF\***  
use code  
revxmas2020

Not that we're telling you what to do, but if you leave this page open on the coffee table in plain view then someone in the house will almost certainly take the hint for Christmas then insist it was their idea.

\* 10% off offer applies to orders received between December 1 and December 15, 2020, to make sure Santa's delivery elves can find your house in time.

# Three Sided Box with a Twist

Alan Smith

How to turn a Three Sided Box with a Twist from a piece of Rippled Sycamore.

Firstly the design and development of the box needs to be taken into consideration. If it is going to be for example, a Trinket Box, it needs to be rounded in the bottom instead of flat for easy removal of trinkets. (A lady did not like a box I once made because she said that its bottom was too flat). Another design feature to consider is the fit of the lid; it does not want to be a tight fit because trinkets might be lost when "popping open" the lid.

## Turning a Three-sided Twist Shape

Turn the square blank to a cylindrical shape (approx. 80mm in diameter) with a Spindle Roughing Gouge.

Turn a tenon either end with a Parting Tool – Note: this is done for depth of cut purposes and not done for chuck holding purposes. The bottom tenon can be slightly greater than the top one, it's not critical.

Mark each tenon's rebate with a pencil line to clearly identify where to cut to.



Marking pencil lines on Tenon's

Mark three points equal distance (120 degrees apart) on one end of the round blank.

Transfer the three marks to the other end of the blank.

Mark lines running to the centre of the blank (both ends).

Draw a 40mm diameter circle one end to put points on and do the same the other end (mirror image) for off-centre turning.

Centre pop the points, number them, and colour both ends of the blank:

No 1 Headstock end goes to No 2 Tailstock end - colour Red.  
No 2 Headstock end goes to No 3 Tailstock end - colour Green.

No 3 Headstock end goes to No 1 Tailstock end - colour Blue.

Turn the three off-centre stages as indicated above ensuring: a) the blank is securely fixed and b) you keep a close eye on the pencil (cutting) lines on the Tenon's whilst turning. Some Turners just number the points.

**Important Note:** The lathe needs to be running on a slow speed setting for safety reasons.



Off – Centre Turning

Note: A Lollipop Stick could be used to check that the three "shallow cove" measurements are the same. Measurements are taken from a reference point (the straight edge of the tool rest). Alternatively a cardboard template could be used to take measurements from the same reference point.

## Shaping the Box ends and hollowing the inside of the Box

Put back on centres to turn a chucking point on headstock end with a Parting Tool. Note: the lathe speed can be increased now.

Curve bottom end of box.

Held in the chuck, remove the Tenon from the top end of the box.

Slightly dish out the top of the Box.

Hollow out the centre of the box using a suitable Hollowing Tool. (could start with a Forstner Bit).

Using a Round Bar (square ended) Parting Tool cut parallel rebates for the lid.

Sand the inside of the box using a sanding stick with scissor cut Rhynogrip abrasive. This gives a nice smooth finish to the round inside of the box.

Note: Because this piece of wood is spalted, I will probably flood it with Superglue to stabilise the spaltling.



Curved bottom of Box



## STAFFORDSHIRE BLACK PRESS RELEASE

Stumbling blindly out of the leafy English countryside, a brand new product for woodturners has appeared – and it'll really darken your day.

Staffordshire Black quietly launched its Ebonising Juice and Tannin Juice lines in September, offering adventurous turners and other woodworkers ready-to-use solutions to recreate techniques used by furniture-makers in times gone by, making regular wood look like expensive ebony.

"It's a new look at an old recipe," said Murray Kelso, a woodturner who founded Staffordshire Black with his wife, Dawn, in their shed in the south of the county.

"We have taken the original base mix for ebonising fluid, which is messy, stinky and needs to be carefully monitored as it brews to prevent build-up of risky gasses, then mucked around with and add powerful secret ingredients - natural ones - to make it much more effective on most woods. When you add Staffordshire Black's Tannin Juice to the equation, which is another natural product from locally-harvested ingredients, you can control just how black you want your masterpiece to be, so they work brilliantly together - even over colour."

Murray, who started turning "by accident" after his father-in-law arrived carrying an ancient Rexon lathe one day, had the idea of Staffordshire Black rattling around in his head for a couple of years until a walk in the woods with Dawn and their dog, Grumble, in spring 2020.

Grumble was busying himself barking at a tree and Dawn and I were discussing her upcoming period of furlough from work. She wanted to do something useful with her time, and agreed to look at the sides of Staffordshire Black which would require the attention of a responsible adult. That's when it all started.

So while Dawn investigated things like web hosting and packaging suppliers, Murray started developing the juices themselves and building Staffordshire Black's website and social media profiles. Throw in writing, photography and "really iffy" graphic design and it has been a busy 10-ish months for the pair.

"Things are going pretty well so far," said Murray. "We're learning as we go, obviously, but the feedback we have been getting even at this early stage is excellent".

"Now it's a case of letting more people know that Staffordshire Black is around and seeing what happens after that. It's all quite exciting!"

For more (layman's) information about the science-based ebonising process, how-to videos and to buy Staffordshire Black juices visit [staffordshireblack.co.uk](http://staffordshireblack.co.uk)



Dished top of Box

### Turning the Box Lid

I chose a piece of "crabby old Yew" that came from a Convent in Derby, which is already superglued, to make the box lid.

Square end off with a 6mm Parting Tool.

Turn a little Tenon (50mm diameter) to fit the lid to the box.

Cut a small taper on the end of the Tenon to make the lid fitting easier.

Keep checking diameter measurement with a Vernier Gauge.

Shape curved top of lid and turn either a finial or a knob on the top.

I like to add a personal feature on the underside of Boxes and Lids, which most turners look for, e.g. two or three fine "V" cuts with the long point (toe) of a Skew Chisel.

*Summary;* The off-centre turning methods and techniques I use can be quite dangerous to use if the blank is not firmly fixed to the lathe, and the speed of the lathe is running too fast.



Small Selection of Alans's Boxes

**Dont forget to renew  
your membership!**

## THE AIMS OF THE AWGB ARE:

- To foster a greater awareness of woodturning
- To provide a forum to encourage communication and an exchange of views.
- To encourage and participate in the development of training Standards and educational facilities for turning.
- To act as the representative body in the UK for the interest of all turners in discussions with government and other bodies.
- To provide news and updates and a regular newsletter.
- To arrange a biennial woodturning seminar in the UK that encourages all to aim for, and achieve, high quality turnery.
- To act as the national body to advise and communicate with publications and other parts of the media to foster a greater public awareness of the turners' art and craft.
- To communicate with relevant national and local authorities about matters concerning woodturning.
- To encourage the formation of local area woodturning clubs

## ASSOCIATION MANAGEMENT

The AWGB is a registered charity, number 1150255 and a company limited by guarantee, company number 8135399. The articles of association are available under 'Documents' on the website.

The AWGB is managed by an executive comprising six general trustees and five regional representative trustees. The trustees are elected on a rotational basis at the annual general meeting held every spring. Every three years the trustees elect an executive president who is also a trustee.

The executive is supported by a number of volunteers. For details of trustees and volunteers see the website or latest copy of revolutions.

**For general enquiries contact the secretary - Derek Puplett 01335 360388 / [secretary@awgb.co.uk](mailto:secretary@awgb.co.uk)**

## MEMBER BENEFITS

- The help and fellowship of both amateur and professional members.
- Over 120 clubs throughout the UK giving fellowship support and advice.
- A quarterly newsletter 'REVOLUTIONS' delivered to your home address.
- Biennial international woodturning seminar held in the UK with top level International turners giving presentations at which there are four free places.
- A selection of members' work is made from the instant gallery at the seminar which is displayed over the following year at national exhibitions and shows at which the AWGB has a presence.
- A members' discount scheme from traders around the country, see corporate members on the website.
- Members' development programme giving a variety of training opportunities.
- Members who offer tuition, give demonstrations or accept commissions may apply to be listed on the website.
- Loan lathes with chuck and tools are available for loaning out to deserving cases.

## MEMBERSHIP RENEWAL

Renewal is due on **January 1st** each year and notice of renewal of annual subscription will be sent to all AWGB members with the December issue of Revolutions. All enquiries regarding subscriptions should be addressed to the membership secretary.

## TRAINING AND DEVELOPMENT PROGRAMME

Full details of the training and development programme are available on the AWGB website. For applications forms see website or contact regional representatives.

## TRAINING WORKSHOPS

Training workshop Days with woodturners specialising in a particular subject area, are arranged at venues throughout the country at suitable premises. The events are advertised on the AWGB website and in *Revolutions* and members are invited to apply for places.

## MASTERCLASSES

For those wanting more advanced tuition we offer a two days / two turners workshop to enable students to benefit from the methods used by two expert turners.

## DEMONSTRATOR TRAINING

To assist members wishing to present their turning ideas to others, demonstrator training days are arranged throughout the country at a venue usually hosted by a branch. The courses are of a “hands on” approach.

## TUTOR TRAINING

We offer the “Let’s teach turning” course and assessments for AWGB approved tutors.

## YOUTH TRAINING

Youth training Days are arranged throughout the country at a venue hosted by a club or by a professional wood turner. The events are sponsored by the AWGB in partnership with The Worshipful Company of Turners, and members who are between the ages of 11-21 on January 1<sup>st</sup> of the year of the event are invited to apply for places. We also support under 11s on a case by case basis.

## RAY KEY BURSARY AWARD

We offer an extended package of support for turners identified as “prodigious” aimed to advance their turning skills and extend their repertoire.

## CERTIFICATE IN TURNING

We offer financial support to members undertaking the Worshipful Company of Turners “certificate in turning” programme.

## THE ASSOCIATION’S WEBSITE

The AWGB has a very comprehensive website, [www.awgb.co.uk](http://www.awgb.co.uk) that gives members up to date information and also shows the world at large what we do. Please refer to the website for the latest information on topics such as:

News and events; details of Clubs; training activities; corporate members showing those who give discount; merchandise and seminar bookings; forms and documents (see resources); lists of members who give demonstrations, tuition or accept commissions; a forum for members to exchange views and ideas.

## REGIONAL REPRESENTATIVES

Five members of the executive represent the South East - South West - Midlands - North - Scotland. They are there to give help and advice to members, branches and associated clubs in their region.

## ITEMS AVAILABLE TO MEMBERS

**AWGB Lapel Badges** Small rectangular metal badges in black and gold

**AWGB Cloth Badges** Circular cloth badges in green and gold

**AWGB Car Stickers** To fix to your windscreen

Please check the website or contact your regional representative for current prices.

AWGB promotional leaflets, badges, membership application forms and health and safety notices are available from your regional representative.

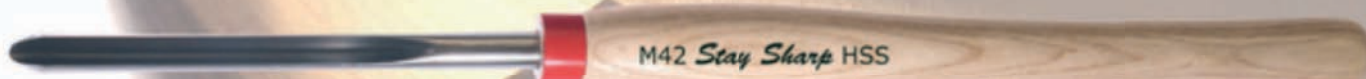
**Dont forget to renew your membership!**



hamlet  
CRAFT TOOLS

Sheffield England

Now  
available in the  
Glenn Lucas range of  
products



M42 Turning Tools

# Stay Sharper - Longer

Now available: 1/4"; 3/8"; 1/2" Bowl Gouges; 3/8"; 1/2" Spindle Gouges  
with red-ferruled ash handles, or unhandled, at prices you can afford

*Live The Dream - Talk to your Hamlet or Henry Taylor Stockist - TODAY!*

## Little Sister Big Performance

Little Sister is a mini hollowing  
tool based upon the highly  
successful Brother System 2 range  
Designed with the small/mini lathe  
turner in mind.

Compact fixing screw  
Hollow through 13mm  
openings with ease!



Tapered Stem  
for maximum rigidity

Proudly  
Made in the UK

**DVD**  
VIDEO  
Free DVD  
included

Talk with your  
stockist today

hamlet  
CRAFT TOOLS

[sales@hamletcrafttools.com](mailto:sales@hamletcrafttools.com)

[www.hamletcrafttools.com](http://www.hamletcrafttools.com)

+44(0)1142321338

3 configurations available



An interchangeable scraper (ref HS187B) also available