

Revolutions

THE NEWSLETTER OF THE ASSOCIATION OF WOODTURNERS OF GREAT BRITAIN

Issue No 133

March 2020

Dont forget to renew your membership!



www.awgb.co.uk

A Company Limited by Guarantee - Company Number 8135399

Registered Charity Number 1150255

Corporate Members of the AWGB

Further information, including discounts, on the Corporate Members is available on the AWGB website.

Allan Calder's Ltd

Supplies high quality sanding abrasives of many types & cloth backed, Velcro backed, abranet, abralon up to 4000 grit for pen making. Stamped out discs. 01538 387738 www.sandpapersupplies.co.uk

Ashley Iles (Edge Tools) Ltd

Woodturning and Carving tools traditionally made to a high specification. 01790 763372 www.ashleyiles.co.uk

Axminster Power Tool Centre

Suppliers of quality woodturning products; courses from beginner to advanced. 0800 371822 www.axminster.co.uk

Biven Machinery Sales

Suppliers of quality woodworking, carving, woodturning, pyrography machinery, tooling accessories and consumables. Discounts available for AWGB members. 01253 425793 www.bivenmachinerysales.co.uk

Charnwood

Woodworking machinery, lathes, chucks and accessories. Next day delivery throughout UK Mainland. 01530 516926 www.arnwood.net

Chestnut Products (Finishes) Ltd

Quality wood finishes with a special emphasis on products for woodturners. The range covers most finishing requirements, from staining and waxing to sealing and polishing. 01473 890118 www.chestnutproducts.co.uk

Classic Hand Tools Ltd

Hand and power tools, books, DVDs, courses. 01473 784983 www.classicandtools.com

Crown Hand Tools Ltd

Range of fine woodworking handtools and an extensive range of handtools for builders and painters and decorators. 01142 612300 www.crownhandtools.ltd.uk

English Hardwoods

English Hardwoods. 07979 251497 www.english-hardwoods.com

Exotic Hardwoods UK Ltd

Quality exotic hardwoods. 01538 715060 www.exotichardwoodsukltd.com

G & S Specialist Timber

Suppliers of air and kiln dried blanks, burrs, boards, spalted beech and yew branches for woodturners. Tools, lathes and accessories. 01768 891440 www.toolsandtimber.co.uk

Goulden Hardwoods

Air dried English hardwoods in slab or round waxed blanks. www.hampshirewoodsuppliers.co.uk

GPS Agencies Ltd

Alternative ivory, horn and black ebony supplied in rod, rectangular bar and sheet form. www.gpsagencies.co.uk

Hampshire Sheen Ltd

Hampshire Sheen water based wood dyes; high strength and long lasting wax; finishing oils and sealers. 01420 560077 www.hampshiresheen.com

Henry Taylor (Tools) Ltd

Woodturning and woodcarving and woodworking tools. 0114 234 0282 www.henrytaylortools.co.uk

Hope Woodturning

Woodturning tuition, demonstrations and a whole range of woodturning tools and accessories. 01206 230694 www.hopewoodturning.co.uk

Lovells Workwear Ltd

Suppliers of protective smocks and aprons which can be personalised. Safety, Comfort, Style. 02920 598327 www.lovellworkwear.com

Max Carey Woodturning Trust

A registered charity which aims to educate the public in woodturning. Tuition is provided through a comprehensive range of courses. 07976 402960 www.maxcareywoodturningtrust.org.uk

Mirka (UK) Ltd

Surface finishing products and tools including abrasive discs strips and rolls. Power tools and accessories. 01908 866100 www.mirka.co.uk

Olivewoodturning

Specialist supplier of Italian Olive Wood 07714204060 www.olivewoodturning.co.uk

Paul Howard Woodturning

Woodturning Jigs, Copy Fingers, Accessories, Demonstrations, Teaching. 01621 815654 www.paulhowardwoodturner.co.uk

Robert Sorby Ltd

Manufacturer of woodturning tools, lathes, and accessories, chucks, sharpening systems and accessories, woodcarving and woodturning tools. 0114 225 0700 www.robert-sorby.co.uk

Snainton Woodworking Supplies

Range of accessories, tools and machinery for woodworking and turning; blanks and squares for turning and carving. 01723 859545 www.snaintonwoodworking.com

Stiles & Bates

Comprehensive Woodturning Supplies since 1996. 01304 366360 www.stilesandbates.co.uk

The Toolpost

A one stop resource, we stock turning and carving tools, accessories, equipment and supplies, safety equipment such as respirators and extraction, books and DVDs. 01235 511101 www.toolpost.co.uk

Turners Retreat

Woodturning and woodworking tools and supplies; Training Courses; Wood, abrasives, machinery, supplies and safety equipment. 01302 744344 www.turners-retreat.co.uk

W.L. West & Sons Ltd.

Woodturning blanks, Various machinery, Turning and carving tools, Chestnut finishes, exotics and Australian timbers, accessories, books and woodturning courses. 01798 861611 www.wlwest.co.uk

Woodart Products

Magnetic and non-magnetic LED lights, Pyrography units & accessories - UK agent for RazerTip. Micro drill/detailer equipment, Carbide piercing cutters & burrs. 07770 226640 www.woodart-products.co.uk

Woodturning Magazine

Woodturning is the world's best selling magazine for woodturners. Suppliers of books, DVDs & magazines. 01273 402871 www.thegmcgroup.com

Yandle & Sons Ltd

Suppliers of timber, machinery, hand and power tools, craft accessories and finishes. Timber supplied as planks or bowl blanks in both exotic or homegrown. 01935 822207 www.yandles.co.uk

DATA PROTECTION

Your personal details are held on computer for the use of the AWGB. We only use this information to run the organisation. If you would like to know what information we hold and how we use it, please contact the Secretary.

Front Cover

Youth Training Day at the workshop of Les Thorne

see page 16 for full details

Revolutions

Copy deadline for the next edition of Revolutions

3rd August 2020

The AWGB is a Company Limited by Guarantee and a Registered Charity. It is administered by a group of elected Trustees who are also Directors of the Company. The Trustees meet at least twice each year and at the AGM. When they meet together they are known collectively as the "The Executive". Additionally, there are a number of people who assist the Trustees in their duties. These people are not elected and are known as "Volunteers".

TRUSTEES OF THE EXECUTIVE

President

Phil Irons
Box Acre, Barton Rd,
Welford on Avon CV37 8EY
07774 212635
philirons@awgb.co.uk

Chairman

Paul Hannaby
Windrush, High Street, Drybrook
GL17 9ET
01594 544417
chairman@awgb.co.uk

Vice Chairman

Derek Puplett
Baldungan, Derby Lane, Shirley,
Ashbourne DE6 3AT
01335 360388
vicechair@awgb.co.uk

Treasurer

Mike Mansfield
27 Grenville Meadows, Lostwithiel
01208 872012
07799 065397
treasurer@awgb.co.uk

Secretary

Maggie Irving
Policehouse, Rosneath, G84 0RG
07515 876906
secretary@awgb.co.uk

Assistant Treasurer

Jeff Belcher
Oak House, Hanley Castle,
Worcestershire WR8 0BJ
07798 746296
treasurer@awgb.co.uk

Trade & Business Liaison

John Brooks
Lower Haygrove, Millpool, Bodmin,
PL30 4HY
07814 826929
trade@awgb.co.uk

Development

Maggie Irving
Policehouse, Rosneath, G84 0RG
07515 876906
development@awgb.co.uk

Membership Secretary & Data

John Peachey
37a Oxstalls Lane, Longlevens
Gloucester GL2 9HP
01452 525976
membership@awgb.co.uk or
database@awgb.co.uk

2020 Seminar Bookings

Stephen Evans
3 Teewell Hill, Staple Hill
Bristol, BS16 5PA
07922 091586
seminar@awgb.co.uk

REGIONAL REPS

Scotland

Darren Crisp
40 Andrew Baxter Avenue
Ashgill, Larkhall, ML9 3RG
07368 504317
scotrep@awgb.co.uk

North

Brian Mouat
17 Lon Dderwen, Abergele
Conwy LL22 7DW
01745 833970
northrep@awgb.co.uk

Midlands

Pat Murphy
72 South View Road, Carlton,
Nottingham NG4 3QL
07918 613762
midlandrep@awgb.co.uk

South East

07860 912539
serep@awgb.co.uk

South West

Bryan Milham
13 Manor Gardens, Locking,
Weston Super Mare, BS24 8DQ
07876 321293
swrep@awgb.co.uk

VOLUNTEERS

Youth Training

Ron Caddy
The Studio, 23 Wisley Road
Andover SP10 3UQ
07903 313065
youthtraining@awgb.co.uk

Workshop & Training

Alan Buckle
15 Churchill Drive, Martin Dales,
Woodhall Spa, LN10 6XY
07866 682247
workshops@awgb.co.uk

Minute Secretary

Peter Einig
07967 047922
minutesec@awgb.co.uk

Webmaster

Alan Davis
37 Field Head Lane, Birstall
Batley, WF17 9BH
07967 670809

Newsletter Editor

Sheila Hughes
49 Essex Street,
Newbury RG14 6QR
01635 45930
editor@awgb.co.uk

Health & Safety Officer

Martin Dickinson
3 Ryslaw Farm Cottages, Duns
TD11 3HX
01890 840635
hs@awgb.co.uk

PR Manager

Scott Waugh
Widley Gardens, Waterlooville
PO7 5RB
02392 388336
07921 247442
pr@awgb.co.uk
webmaster@awgb.co.uk

Chairman's Notes

Paul Hannaby

I hope you are all managing to keep yourselves occupied and are managing to keep in touch with the outside world. The Covid-19 lockdown is affecting everything we do but at least as woodturners we can temporarily take refuge in our workshops. It has been humbling to see so many people in many walks of life going above and beyond for the benefit of the rest of us and I think that has restored many people's faith in humanity. The ever climbing numbers of those taken by the coronavirus are reason to reflect on how lucky we are to still be here and to sympathise with those affected.

Sadly, club meetings have been impacted by the lockdown and may continue to be for the next few months too but it has been encouraging to hear from a few clubs who are being proactive in keeping in touch with their members and are arranging alternatives to the usual club meetings by using the technology available. The situation we find ourselves in has made many of us rethink what we do. I have been working on setting up the capability to do remote demonstrations and have written an article outlining the equipment and technology needed which is elsewhere in this issue.

New Initiatives

The AWGB is trying to do what we can to reach out to members in as many ways as we can. We are hosting twice weekly meetings using Zoom, which anyone can participate in. You just need an internet enabled device. More details are on our website and Facebook page. The meetings have evolved to include a tour of a turner's workshop and a talk from them about what they make along with a Q&A session. We have also started to host live interactive remote demonstrations which are open for anyone to view. I did the first of these and the video is available online for anyone to view. We have also created a list of remote demonstrators on our website as a resource for clubs and individuals looking for either remote demonstrations or remote tuition. There is also a new "Learning Links" page with links to online videos which may be of interest. Now we have the capability, we may use the new channels as ways to deliver training to members or to host other virtual events.

We are continuing to produce Revolutions for our members and have extended the grace period for membership renewals until the end of June to enable those who haven't been able to renew through their clubs to receive this issue. However, we can't do that indefinitely so if you haven't renewed, you need to do so soon to continue your membership.

I have also increased the frequency of the email bulletins to try to keep our members informed of new developments. If you have any news you want to share, feel free to email me.

Due to the continued social distancing guidelines, we have decided to postpone all training events up to the end of August. Those booked on the workshops and masterclasses will be informed directly and new dates arranged when we are able to.

Finances

We have been asked to consider what should be done regarding membership fees. In doing so we have

considered our finances and running costs. The training events are all being treated as postponed so those are a deferral of expenditure rather than any saving. We are continuing to produce Revolutions and have incurred additional costs by extending the membership renewal grace period to allow those who were unable to renew to receive this issue. We have invested (approx. £1000 over the next 12 months) for additional software and subscriptions to enable us to use Zoom for meetings and demonstrations. The Worshipful Company of Turners generously contributed £500 towards the software costs and we are very grateful to them for their support. We also continue to run our various grant schemes to assist clubs and individuals.

Our only reduction in expenditure will result from not attending the shows which have been cancelled and as a result, we save on expenses. Having looked at all these factors, the conclusion was that there would only be a minimal reduction to membership subscriptions and to refund that would be an administrative nightmare, which would probably cost almost as much to complete as the reduction being given. So the decision of the trustees was to keep membership fees exactly as they are. If in the long term, we make a saving this year, that would potentially defer any future increase in membership fees so it will all come out in the wash!

We have just awarded the first Ray Key Bursary Award. More news on that in the next issue...

Our discussions with the Arts Council have come to a halt. Due to the Covid crisis, they have diverted all their funding to assist those affected and new projects have been put on hold. Hopefully we can resurrect our discussions with them at some point in the future.

Volunteers

We need assistant regional reps in Scotland, the South West and South East regions. Their role is to support the regional rep by helping out at shows and visiting clubs (when we are allowed to do so!). We also need volunteers to help out with the website, PR and we need a minutes secretary. We try to fit our demands around individual capabilities and availability. If you are able to spare a little time and think you can help fill one of these roles, please get in touch. The AWGB is entirely run by volunteers and without them, it would cease to exist.

Seminar 2020

We are currently still working on the assumption that the Seminar will go ahead on the 9th-11th October at Yarnfield Park in Staffordshire but just in case, we have negotiated backup dates of the 14th – 16th May 2021. We are also guaranteeing any booking will either be deferred to the 2021 dates or refunded if the October dates prove to be unviable so you can continue to book with confidence and support us at the Seminar.



Seminar Scholarships – Apply Now!

We still have places available for scholarships for both adults and junior members. Due to the Covid situation, we have extended the deadline to the end of June so please apply using the form on our website to the secretary by the 30th of June.

AGM

Our AGM ended up being a virtual online meeting and we were able to cover the required agenda. Once we are able to move freely, we will look at arranging a general meeting as a replacement for the AGM where we can provide an opportunity for clubs and individuals to attend and air their views.

Where possible, we are trying to operate business as usual. We are also trying to do as much as we can to maintain contact and reach out to the turning community. If you have any suggestions for other things we can help with, let me know. I hope you continue to stay safe and I look forward to when we are through this crisis.

ProEdge Sharpening refined

The Robert Sorby ProEdge offers effortlessly repeatable sharpening every time.

Features and benefits:

- Change belts in seconds
- Flat bevel rather than hollow grind
- Wide range of grits and abrasives
- Belt sharpening lowers risk of overheating
- Sharpen at exactly the same angle every time
- Nine factory indexed settings provide a guide for all types of tool
- Can be locked between indexes for custom settings

Wide range of accessories to suit all sharpening needs

“I really liked the system and recommend it. It was quick and simple to set up and very easy to use. I really believe that my tools were sharper than when sharpened on a wheel.”

Joseph M. Herrmann, Editor, Woodturning Design

Woodturning Design

Robert Sorby

The Robert Sorby ProEdge: Sharpening made simple

www.robert-sorby.co.uk

Proudly Made in Sheffield, England
Patent Number: 2438962

W.L. West & Sons Ltd
Selham, Petworth, GU28 0PJ
t: 01798 861611 f: 01798 861633

- Hardwoods
- Wood finishes
- Australian Burrs
- Exotic Timbers
- Woodturning Blanks
- Woodturning Courses (see website for dates)
- Woodworking Machinery
- Woodworking Tools
- Fencing, Gate & Decking Products
- Bespoke Garden Furniture

RECORD POWER
SHEFFIELD - ENGLAND

Timber, Tools & Machinery for D.I.Y • Carving
Woodturning • Furniture Projects
shop@wlwest.co.uk

Off A272 Midhurst to Petworth road opp The Halfway Bridge Inn

Open: Mon-Fri 8-5 & Sat 9.00-1.00pm
www.wlwest.co.uk



Company Registered Number : 8135399.
Registered Office : 36 Crown Rise, Watford, WD25 0NE.
Registered Charity : 1150255.
www.awgb.co.uk

Application for Seminar Scholarship – 9th – 11th October 2020

(AWGB Members Only)

Name	
Address	
Telephone No	
Email address	
AWGB membership No	
Date of Birth (If under 22)	
Branch/Club (if applicable)	

Data Protection: The information you provide on this form will be used for dealing with your application. By signing this form you are giving consent for the AWGB to use your data as described in our privacy policy which can be found at www.awgb.co.uk/privacy-policy. Your data will be used and stored in accordance with this policy.

Use the box below to tell us why you want a scholarship and how you think it be of benefit to you. You should also give an indication of your financial status (any information given in this regard will be kept confidential).

The closing date for applications is 30th June 2020. After this date the Trustees will review the applications and award a number of scholarships. The Trustees' decision is final.

--

Signed:

Date:

Parent/Guardian Signature if under 18:

Please return the application form to Maggie Irving at secretary@awgb.co.uk

Minutes of the AGM of the AWGB

held on Sunday 29th March 2020

Present: Paul Hannaby (PH), Derek Puplett (DP), Jeff Belcher (JB), Maggie Irving (MI), John Peachey (JP), Bryan Milham (BryanM), Stephen Evans (SE), John Abercrombie (JA), Mike Mansfield (MM), Martin Dickinson, Roger Haynes, Vicki Prouse, Kjell Nilsen-Nygaard

PH welcomed everyone to the meeting and noted the extraordinary circumstances which necessitated this digital AGM meeting. PH stated that this meeting would have a minimum agenda. PH stated the agenda would be Chairman's Report, Treasurer's Report, appointment of new trustees, vote for the accountant and AOB. A full general meeting would be held in place of the AGM later in the year.

There were no apologies noted.

Treasurer's Report

Charity

JB shared the Charity Annual Report and Financial Statements for Year End 31. December 2019 (Appendix A). JB advised that the charity currently had net assets of £74,000, £5500 of which were restricted funds. There has been a change of approximately £2000 between 2018 and 2019 indicating that the AWGB is running on a similar basis to 2018.

On that basis JB advised there would be no need to increase subscriptions. In view of the current Covid19 emergency there are less anticipated expenses so financially we are in a very good position and there should be no need to change current practices or proposals.

Trading

JB shared the Trading Annual Report and Financial Statements for Year End 31. December 2019 (Appendix B).

JB advised these accounts were showing a gross profit of £14,000 mainly from sales of goods and income from seminar bookings.

JB noted that the profit from the sales of Ray Key books would have to be transferred to the charity at a later date.

Chairman's Report

PH stated that last year had been different in many respects, including the huge amount of effort which went into the Ray Key Collaboration. This culminated in the Nature in Art Exhibition which achieved £10,000 worth of sales for sellers. Although it was not the purpose of the event to achieve any profit for the AWGB, PH felt that it was beneficial to the profile of the Association.

PH reported that the training programme had been expanded from 12 courses to 20. Although we didn't manage to achieve a full complement, and in view of the current Covid19 situation, it is hope that we will be able to reschedule those.

PH stated that there had been a number of changes to officers over the year and that we now had a team that would stand the association in good stead.

PH stated that we had attended a greater number of shows, raising the profile of the AWGB. Although the plan this year was to cut back on the number of shows, many have now been cancelled. The principle, however is to gain maximum impact without excessive expense to the association and PH stated that this will be held under constant review.

Results of Ballots for Trustees

PH stated that 3 Regional Reps have resigned as of 29 March 2020:

Colin Smith SW rep.

Dave Wilcox Scotland rep.

John Montgomery SE rep.

Their replacements are:

Bryan Milham SW rep.

Darren Crisp Scotland rep.

John Abercrombie SE rep.

Since there was only one nomination for each, there was no need for a ballot and their appointment is effective 20 March 2020.

PH also stated the appointments of other trustees elected as of 29 March 2020. These are:

Mike Mansfield

John Peachey

Roger Phebey

Stephen Evans

Maggie Irving

PH advised that the cycle for election of reps is every two years and general trustees every four years.

Appointment of Accountants

JB suggested that we continue to use Campbell Wilson. PH noted that we have used them for many years, they are competitive in pricing and understand the business of the association. The proposal to carry on with Campbell Wilson as our accountants was carried.

PH advised that a full general meeting would take place at a later date and closed the meeting by urging everyone to stay safe.



Volunteers Required

To run the AWGB we need some more Volunteers:

**Assistant regional reps in the
South East, South West and Scotland regions.**

The role is to support the regional rep by helping out at shows and visiting clubs.

**We also need volunteers to help out with the website, PR
so if you think you can help please contact Paul.**

**For more details about these positions contact Paul Hannaby
chairman@awgb.co.uk or 01594 544417**



**Come and visit our warehouse at
Megcroft Farm and see our extensive
selection of exotic and native
hardwoods, it's best to phone first.**

You can also order directly from the website at
www.exotichardwoodsukltd.com

Email: hello@exotichardwoodsukltd.com
Tel: **01538 715 060**

Exotic Hardwoods UK Ltd
Megcroft Farm • Onecote Road • Ipstones
Staffordshire • ST10 2NB

All Seminar delegates are welcome to visit us here and have a look at all the wood. ***You won't be disappointed.***



Derwent Woodturning Club Open Day

John Hooper

Photos: Gemma Walton & John Hooper

Introduction.

Derwent Woodturning Club was founded in July 2002 by Alan Smith, who has been the Chairman of the club every year since then. Allen Bumstead is the only other member who was there at the start of the club. Membership numbers tend to change each year, currently membership is between 30 and 40 members. Club meetings are held at Sharpes Pottery Museum, 23 West Street, Swadlincote, Derbyshire, DE11 9DG. Meetings take place on the first and third Wednesday of each month starting at 6.30 pm and finishing around 9 pm. Members travel to the club from South Derbyshire, Staffordshire and the Midlands.

Open Day Programme.

The Open Day was held on Saturday 29th February from 10.30 am to 3.30 pm. This event was a publicity event to increase the awareness of the woodturning club and was free for anybody to attend. Turning demonstrations by club members were going on all day and the rule for the demonstrations was to keep it simple. Bob Neill (the Pyrography Guru) was demonstrating the art of pyrography all day. Professional woodturner Steve Heeley was on hand all day to give advice and guidance to anyone interested in woodturning. Refreshments were provided free of charge.

Club Demonstrators.

Alan Smith (Club Chairman and Regular Club Demonstrator).

Alan chose to turn Spinning Tops and Jumpin Jacks, similar to David Springett's Jumpin Jacks in the June 2016 issue of Revolutions.

Note: The Perspex Screen is to protect visitors from flying wood chippings.

Alan has been extremely busy on his lathe, turning a wide variety of items for sale including: bird houses, seed pot makers, garden dibbers, bottle stoppers, boxes, door wedges, twisted mushrooms, spinning tops, jumpin jacks, earring and bracelet stands just to name a few. (Something for all ages).



Fig.1. Alan turning Jumpin Jacks.



Fig.2. Alans sales stand.

Peter Hollis (Club Secretary).

Peter turned small pin boxes which have a pin cushion fitted to the top of the lid.



Fig.3. Peter explaining turning techniques to visitors.

Peter has also been extremely busy on the lathe, making a good selection of items for sale including: bud vases, mushrooms, salt & pepper pots, needle cases, garden twine holders, lidded pots, door wedges and pin cushion boxes.



Fig.4. Peters sales stand.

Sharpes Pottery Museum Shop.

The Museum Shop has a variety of items for sale that are turned by club members, including: ornamental bird boxes, potpourri dishes, clocks, bowls, dibbers, salt & pepper pots and pendants. As items sell other pieces are added to the shop display.

Pop-Up Woodturners.

The Pop-Up Woodturners in the Craft Village at the Plant Pot in Lichfield was established by Peter. With a lot of support from Alan the Pop-Up Woodturners now have a working and selling presence in the Craft Village most weekends.

David Winter (Regular Club Demonstrator).

David was demonstrating the different methods and techniques he uses to turn bangles. Some bangles are made from laminated hardwoods and some have laminated plywood sections.

Note: David prefers to use laminated wood instead of using just one wood because there is less likelihood of the bangles breaking and laminations make this piece of jewellery more decorative.



Fig. 5. David applying a Melamine Lacquer to a laminated hardwood bangle.



Fig.6. Small selection of David's finely finished items.

Alf Key (Refreshments Manager) and Lol Poole (Club Secretary).



Fig.7. Two pen turning experts Alf and Lol.

Alf and Lol are two of the clubs pen turning experts.

Note: Lol has run a number of pen turning hands-on nights at the club and gets the pen kits from Fun-E-Turnz.



Fig.8. Small selection of Alf's finely turned pieces.



Fig.9. Nicely turned pieces by Lol. The candlesticks look superb made from Yew.

Guest Demonstrator Bob Neill.

Bob was demonstrating his very artistic skills in creating wonderful pyrography images.



Fig.10. Bob demonstrating pyrography.



Fig.11. Small selection of Bob's superb pyrography creations.

Note: Bob has demonstrated at our Club numerous times producing some excellently designed artistic pieces. If you want to have a go at Pyrography, then go along to one of Bobs One Day Pyrography Courses.

Contact Details: Phone: 01332 792036,
Email: bob.neill1@btinternet.com,
Web: www.bobneillpyrography.co.uk



Fig.12. Two of the authors traditional Windsor chairs.

The Smokers Bow is made from Yew & Elm, and the Single Bow-back is made from Ash & Elm. Details of the methods and techniques used in making these chairs are also in the June 2016 issue of Revolutions.



Fig.13. Woodturning display by Hugh Field.

A small selection of Hugh's uniquely designed and superbly finished pieces are shown in this photo. Most of them are competition pieces from the last 10 years.

From left to right in the photo:

Slotted (routed) sugar bowl in Beech with ceramic bowl inside and turned spoon with twisted handle in maple.

At the back, a vase in Apple with a turned rim at an angle to the main axis.

"Autumn Leaf" Bowl in Sycamore, carved and pierced with Axminster Multi-Tool and flexible shaft, pyrographed, spirit stained and acrylic lacquered.

At rear, "abstract" made from two turned pieces, each cut in two and re-assembled after rotary tool carving, pyrographing and spirit staining. Base made from laminated coloured veneers, "egg" made from polymer clay. Acrylic lacquered.

Set of coasters in Beech with "corian" inserts, stand in Sycamore and American Black Walnut. Acrylic lacquered.

At rear, pierced hollow form in Maple with Black Walnut hollow spiral finial and base.

"Manta Ray" bowl in Sycamore, carved with Proxxon long neck angle grinder, pyrographed and acrylic lacquer finish.

Salt & Pepper grinders on stand in Oak with Blackwood and Apple filling plugs. Acrylic lacquered on outside only.

At rear, pair of book ends in Oak with American Black Walnut, Purpleheart and Pau a Marello features. (Sold at open day).

Salt & Pepper shakers on stand in Oak with Boxwood screw in plugs and top caps. (Sold to Steve Heeley at open day).



Fig.14. AWGB Representative for Midlands "Pat Murphy".

Pat Murphy sent his thanks for the invite, said he enjoyed the day and looked forward to coming to see us again.

Summary.

The Clubs first Open Day was a very successful event with around 100 visitors of all ages, numerous turned items sold on the day, and a lot of interest was shown by those visiting the event. A big thank you must go to all the club organisers, Club demonstrators and the ladies serving the refreshments in making it such a pleasant day. A special thank you goes to Bob Neill, Steve Heeley and Pat Murphy for giving up their free time to support our club.

Everyone are welcome to come along to a club meeting for a taster of what we do.

Club contact details - contact us through our website <https://derwentwoodturners.simdif.com>.

or contact by email at derwentwoodturners@gmail.com

Notice

If anyone who has passed the AWGB tutor assessment wants an extra "Approved Tutor" badge for a spare smock, we can supply them at £3.50 each plus £1 postage (same cost as the AWGB cloth badge). These will only be supplied to current members who have passed the assessment. Contact Derek Puplett to order extra tutor badges. The green AWGB cloth badges can be purchased from our website.

Application for Membership / Renewal of Membership

I wish to apply for membership / renew my membership of the Association of Woodturners of Great Britain (AWGB). I understand that the AWGB is a company limited by guarantee, and if it is dissolved while I am a member or within 12 months after I cease to be a member, I will contribute such sum as may be demanded of me, up to £1 maximum, towards the costs of dissolution and the liabilities incurred by the Company while I was a member.

PLEASE USE BLOCK LETTERS

Membership Number (if already a Member)		Tick if you are applying for the first time
Title	First Name	Surname
Address		
		Postcode
Phone Number	Mobile Number	
AWGB Branch name (if applicable)		
Email (if applicable)		
Website (if applicable)		
Individual / Junior / Family / Overseas Membership. <i>(Delete as required.)</i>		
Junior Members please give your date of birth		
If you are applying for Family Membership please give the names of your family here		

The membership year runs from 1st January to 31st December. Half year membership is available from 1st July to 31st December at half the yearly subscription rate. Applications received after 1st October will last until 31st December in the following year, providing the full annual subscription has been paid.

Subscription rates UK members

Individual - **£18**

Family - **£28**

Junior - if under 22 on 1st Jan of membership year - **Free**

Subscription rates for overseas members Individual members - **£28 Sterling**

Data Protection

The information you provide on this form will be used solely for dealing with you as a member of the AWGB; to inform you of AWGB news and to administer your attendance at AWGB events. By signing this form you are giving consent for the AWGB to use your data as described in our privacy policy which can be found at www.awgb.co.uk/privacy-policy. Your data will be used and stored in accordance with this policy. If you are applying for a family membership, each member of your family over 18 must also sign below to give their consent. Members under 18 must also have their form signed by a parent/guardian.

Signed:	Date:
Additional family members/parent/guardian signatures:	

Payment Methods

Cheque payable to the AWGB.

Bank Transfer - please pay into our account as follows: Santander, Sort Code 09-01-28, Account Number 32277785
Please quote your membership number and name in the reference field.

From overseas: IBAN is GB75ABBY09012832277785

Standing Order - please contact your bank and arrange payment on 28th December of each year quoting your membership number and surname/family name as the reference.

Please indicate your method of payment: cheque / direct bank transfer / standing order

Gift Aid

Declaration – for past, present & future donations

Name of Charity: Association of Woodturners of Great Britain

Registered Charity 1150255

Through the Gift Aid scheme, we can reclaim the tax on your donation or membership subscription. For every pound that you give we can claim an extra 25p from the Inland Revenue. We will also be able to reclaim the tax on any future donations you make.

giftaid it
making donations go further

☐

Please tick the box if you would like the AWGB to benefit from gift aid on your membership fee / donations

I would like the AWGB to reclaim tax on any eligible donations or membership subscriptions that I have made in the last four years and in the future, until further notice. I confirm that I pay the amount of UK income tax or capital gains tax for each tax year (6 April to 5 April) that is at least equal to the amount of tax that all the charities or Community Amateur Sports Clubs (CASCs) that I donate to will reclaim on my gifts for that tax year. I understand that other taxes such as VAT and Council Tax do not qualify.

Please notify the AWGB Charity if you:

- ❖ Want to cancel this declaration
- ❖ Change your name or home address
- ❖ No longer pay sufficient tax on your income and/or capital gains

If you pay Income Tax at the higher or additional rate and want to receive the additional tax relief due to you, you must include all your Gift Aid donations on your Self Assessment tax return or ask HM Revenue and Customs to adjust your tax code.

Signed:

Date:

Make A Donation

If you would like to make a one-off donation to our charity, please see the website: www.awgb.co.uk/donations/.

Legacies

Perhaps you would also consider leaving a legacy to the AWGB when making a will.

Do you shop at Amazon?

If you do, you can use the smile.amazon.co.uk URL and choose us (Association of Woodturners of Great Britain) as your charity. We will receive a donation from Amazon every time you shop there using the smile.amazon.co.uk URL. It costs you nothing to do, just use the right URL!

Thank you for your support and considering a donation.

Please return to: John Peachey 37a Oxstalls Lane, Longlevens, Gloucester GL2 9HP
Tel: 01452 525976 email: membership@awgb.co.uk

AWGB International Woodturning Seminar

9th to 11th October 2020

Yarnfield Park Training and Conference Centre

Stone Staffordshire ST15 0NL

9-11 OCTOBER
2020
AWGB
INTERNATIONAL
WOODTURNING
SEMINAR
Your turn to be inspired



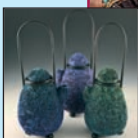
Colwin Way
UK



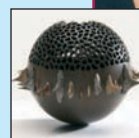
Emmet Kane
Ireland



Jacques Vesery
USA



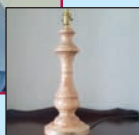
Jocelyn Naigeon
France



10 of the best International Turners from around the world showing their skills and passing on their experiences and knowledge, freely and with passion.



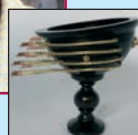
Willie Creighton
Ireland



Mary Ashton
UK



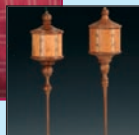
Keith Gotschall
USA



Sally Burnett
UK



Tim Yoder
USA



Lots of demonstrations in individual rooms with full audio/visual equipment so you don't miss a "cut".

We will have more one-slot presenters in addition to the ten headliners.

Lots more masterclasses.

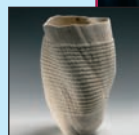
Refreshment breaks and lunch provided each day. Throughout the event we have trade stands to visit, a raffle and of course the instant gallery where we encourage everyone to bring up to 3 pieces of their best work to display.

Tickets are on sale details on the website
awgbwoodturningseminar.co.uk

Keep an eye on the website and facebook for up to date information.



Yan Marot
France





AWGB International Seminar 9th to 11th October 2020

Booking Form

The accommodation comprises en-suite double rooms, including 59 twin rooms, and there are a number of accessible rooms. We are pleased to offer a range of attendance options. Please select the quantity required. If you have any particular needs or requests please note them below. (All costs include VAT)

Early Bird Discount applies if you pay 50% before 31 March 2018.

Package	Description	Cost	Early Bird Cost	Quantity	Total Cost
A	Full Weekend incl Accommodation and Meals	£445.00	£405.00		
AT	Full Weekend incl Accommodation and Meals with Twin room for Two People	£830.00	£780.00		
AD	Full Weekend incl Accommodation and Meals with Double room for Two People	£830.00	£780.00		
B	Full Weekend incl Lunches, No Accommodation or Evening Meals	£325.00	£305.00		
C	Friday incl Lunch, No Evening Meal	£95.00	£90.00		
D	Saturday incl Lunch, No Evening Meal	£140.00	£130.00		
E	Sunday incl Lunch	£115.00	£105.00		
F	Saturday incl Lunch & Evening Meal	£160.00	£150.00		
Total Cost					

Name (as you would like it on your badge)	
Address (inc Postcode)	
Email address	
Tel Number	
Membership Number (if applicable)	
Please advise any particular requirements (diet, access etc)	

Data Protection: The information you provide on this form will be used solely for dealing with you as a member of the AWGB; to inform you of AWGB news and to administer your attendance at AWGB events. By signing this form you are giving consent for the AWGB to use your data as described in our privacy policy which can be found at www.awgb.co.uk/privacy-policy. Your data will be used and stored in accordance with this policy.

Payment:

Early Bird: 50% deposit on booking before 31 March 2020, remainder due 4 weeks prior to the seminar

Non-Early Bird: 50% deposit on booking after 31 March 2020, remainder due 4 weeks prior to the seminar.

NB If you are unable to attend your deposit may be refunded at the discretion of the AWGB.

I have paid by cheque/bank transfer/international bank transfer (delete as appropriate). We are unable to take card payments by telephone. Card payments can be made on the website or by sending a payment through PayPal to awgbtrading@awgb.co.uk

Signed:

Date:

Payment by cheque payable to AWGB Trading Ltd, or

Bank transfer to sort code 09-01-28, Account number 41132390 (use family name/2020 as reference) or

From overseas IBAN: GB88ABBY09012841132390 (use family name/2020 as reference)

Please send this form (with cheque if appropriate) to: Stephen Evans 3 Teewell Hill, Staple Hill, Bristol BS16 5PA

Tel: 07922 091586 Email: seminar@awgb.co.uk

Kent Woodturners New Members Training Event February 2020

Albert Williamson

Established in 1989 as the "Kent Chapter of the Association" and subsequently known as "AWGB (Kent Branch)" and finally "Kent Woodturners", we had a somewhat nomadic existence until 2003 when we relocated to the Brocard Room in the original centre of the village of Aylesford in Kent. Here we are fortunate and very privileged to hold our meetings and events in the very inspiring confines of The Friary, the home of a small number of active Friars that belong to the religious order of Carmelites, which dates back to 1242.

It is somewhat ironic and hopefully not an omen with regard to our current Covid-19 that in 1350 the hamlet of Luddesdown just 5 miles across the River Medway from Aylesford was wiped out by the Black Death. Thankfully medicines and approaches to controlling pandemics have advanced beyond recognition.

Although scheduled well in advance it proved fortuitous that we were able to squeeze in a New Members Training Event on February 29th just two weeks before we were forced to suspend all of our club activities for the foreseeable future.



These Training Days are held regularly and until 2016 were led by the late and much missed David Reeks. The mantle has been taken on by Tony Southey and in this instance he was leading the instruction of seven students. The term "leading" is specifically used as Tony was supported by eight experienced club members to reinforce Tony's instruction with the students on a one to one basis.

This was an all day event where in the morning the students were taken through the introduction to the lathe and the most important health and safety aspects, before learning the fundamentals of the Spindle Roughing Gouge, Spindle Gouge, Parting Tool, Skew Chisel, Jacobs Chuck and becoming comfortable with the general handling of a lathe. The students were introduced to the skill of turning beads, fillets and coves during the process of completing a bud vase. Precise dimensions of the bud vases was not a factor and the students were encouraged to express their own ideas on design.

After lunch the instruction focused on the concept of a bowl, starting with the considerations in selecting the piece of timber and the options of creating a circular disc from a square, and then moving on to the use of the Bowl Gouge and the different grinding profiles available. The students

were then led through the processes of shaping the outside, forming a mounting tenon and then removing the bowl inner. The aspect of tool manipulation and control was stressed to build skills and confidence to enable the students to reinforce this knowledge in their own workshops.

The students were also provided with a basic do's and don'ts of sanding but due to the limitations of dust extraction only a small practical application was undertaken, again sufficient for them to finish the item at home.



From the photographs you will see that the students were pleased with their finished efforts and appeared to enjoy the day. We are a strong club with a membership that fluctuates around the one hundred level and we already have a waiting list for the next running of this basic level of training. We also periodically have formal Training Days for more advanced applications like Hollow Forms etc.



In conclusion a very rewarding day for the students and instructors alike for which we thank them all. Hopefully this wretched Covid-19 virus will soon be under sufficient control to enable the club to meet together again to show all the pieces that we have made whilst isolated in our workshops and to move on with further training.

As a further measure of protecting our members we have felt it prudent to cancel our Exhibition and Sale scheduled for 26 June to 5 July, but keep optimistic that our Christmas Exhibition and Sale in November will take place.

Youth Training Programme

Ron Caddy, Youth Training Coordinator

The latest Youth Training day was held on the 22nd February 2020 at the workshop of Les Thorne In Alresford Hampshire.

The AWGB gives each Young Turner free membership of the Association until they are 21. The Association also covers the events with Insurance and pays for the incidental expenses of the training day such as materials, drinks and venue hire. The Worshipful Company of Turners makes a payment to the Tutors to cover their travel expenses and time.



For the latest Training Day, 6 Young Turners attended coming from Hampshire Berkshire and Buckinghamshire. Each student had attended a previous course, this was a deliberate decision as we wished to see how each student had progressed. The student:tutor ratio is 1 tutor to 2 students. The Tutors for the day were Les Thorne, Mick Hanbury and Ron Caddy.

The students were requested to arrive at 9.00am, being keen they all arrived earlier!! The day started with informing them of the Health & Safety guidelines for the day. They were then each issued with a programme of how the day would operate, being split into three 90 minute sessions so that they would spend some time with each of the Tutors who would guide them in different aspects of the Woodturning Craft.

With Les Thorne they learnt about the design and making of a candlestick in Ash, with Mick Hanbury an Ash platter with a beautifully decorated rim. Ron Caddy guided them in pen turning/making using different materials, (a ballpoint pen in acrylic and a fountain pen in wood).

A number of supporters visited throughout the day, The Master of the Worshipful Company of Turners (Andrew Sindall) arrived at the beginning of the day. Other Company representatives were Mellissa Scott (the next Master), Peter Gibson and Peter Ellis (both past Masters) and Stuart Mortimer, Master in Turning. Also, representing the AWGB was Paul Hannaby the Chairman of the Association.

The day concluded with a speech by the Master of the Company who then presented each of the students with a certificate.

Little Sister Big Performance

Little Sister is a mini hollowing tool based upon the highly successful Brother System 2 range. Designed with the small/mini lathe turner in mind.

Compact fixing screw
Hollow through 13mm
openings with ease!

Tapered Stem
for maximum rigidity

Proudly
Made in the UK

DVD
VIDEO
Free DVD
included

Talk with your
stockist today

hamlet
CRAFT TOOLS

sales@hamletcrafttools.com
www.hamletcrafttools.com
+44(0)1142321338

3 configurations available



An interchangeable scraper (ref HS187B) also available



Other Youth Training days are planned. Enquiries should be directed to Ron Caddy who acts as the co-ordinator for the events.

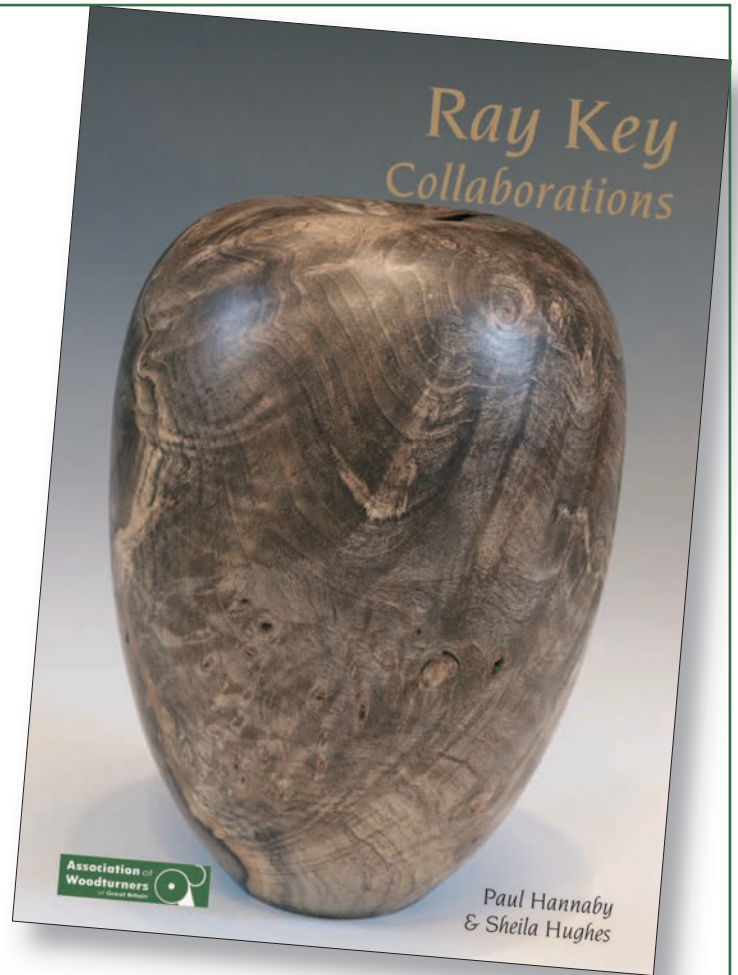


**Association of
Woodturners**
of Great Britain



**The AWGB have produced
a commemorative
hardback book of all the
finished pieces in
Ray Key Collaborations
which can be purchased
online at
www.awgbseminar.co.uk**

Background information and photos of the
Ray Key Collaborations are on the
AWGB website
www.awgb.co.uk/ray-key-collaboration



Stiles & Bates

The Woodturning People



Shop

Free Mail Order Catalogue

Website

Upper Farm, Church Hill, Sutton, Dover, Kent. CT15 5DF

Tel: 01304 366 360

www.stilesandbates.co.uk
sales@stilesandbates.co.uk



Bin/Burn/Turn part 3 - Whistles

Robert Postlethwaite

The previous projects are ideal for demos when small items can be made quickly and given away to watchers. I hope they have helped new turners to get started and provide lots of items for tombola style prizes, they have at the Bristol Branch.

This project takes a bit longer as it is in stages, but is a good give away item as it does not take long to make. I have made 100s of whistles, they can be made in various sizes, [depth of hole] to give different notes. I have used fruit wood prunings as it is food safe and being wet is easy to turn, the hole in the middle stops the wood splitting.



Cut the blanks about 100mm long and 20mm diameter now find a drill the same size as a dowel approx. 8mm [check as it does vary], you want a tight fit, drill down about 60 mm and use the drill as the drive, like the light pull. Drilling can be done on the lathe holding the wood with a glove or its safer with a drill press, similar to the drilling the light pull.



Shape as shown in the photos, it needs to be thin where the mouth cut out is, if the wood is wet allow it to dry then cut the mouth, this is cut with a hand saw, [coping saw, tenon saw etc] any "whiskers" need to be cut out with a sharp knife, [scalpel].

The dowel needs to be sanded or planed to a D shape, cut to 20mm lengths and pushed in to the start of the "mouth" and glued in [PVA]. Test by blowing, when dry, sand off excess and use a food safe finish. Make a batch as they do not take long, also try making the blank longer for a different sound, the bulge needs to be left to avoid somebody swallowing your whistle.



Waveney & District Woodturners donate PPE to the NHS

Andrew Biggs



Club Events Secretary David Ritchie is shown here liberating the Club's stock of face visors to donate them to local GP surgeries. "We can't use them anyway just now" he said, "and we thought that they could be of great use to protect our GPs and their nurses".

A local GP received them very gratefully indeed as the badly-needed PPE has been slow in coming from the NHS and local DIY shops have sold out of supplies.

Allan Calder's Ltd Sandpaper Supplies

Unit 2B Churnet Works, James Brindley Road,
Leek, Staffordshire ST13 8YH



We are supplying top
quality brands of
sanding abrasives for all
types of wood turners.

www.sandpapersupplies.co.uk

Email: sandpapersupplies@yahoo.co.uk

Tel: 01538 387738

A challenge from Wealden Woodturners

Peter Castle

Competition Secretary Wealden Woodturners

In March our club, the Wealden Woodturners, had a 'Hands-on' session with all members attempting to make a spinning top which spun longer than all others. This has now developed into an annual event - mainly because Maggie Wright, our chairman, keeps winning and we were determined to beat her this year. I am pleased to say that this we achieved and the winning team - John Turner and Gregg Collett managed a fantastic 3 minutes and 35 seconds.



Much discussion took place on the design, background science and the intention to improve even further on the winning time. The current lock-down has now given us the opportunity to encourage members to get down the shed and have another go.

We then thought - why leave it there.....why not challenge all AWGB members to have a go and improve on that time. Can you do better? give it a go.

A video of any successful spin would be preferable but, failing that, a witnessed spin will suffice or we would, of course, accept any members word that they have succeeded.

Rules:

Let's keep it simple and constrain it is to a simple top spun by one hand, made only from timber.

Keep Safe



hamlet
CRAFT TOOLS
Sheffield England

Now available in the
Glenn Lucas range of
products

M42 Stay Sharp HSS

M42 Turning Tools

Stay Sharper - Longer

Now available: 1/4"; 3/8"; 1/2" Bowl Gouges; 3/8"; 1/2" Spindle Gouges
with red-ferruled ash handles, or unhandled, at prices you can afford

Live The Dream - Talk to your Hamlet or Henry Taylor Stockist - TODAY!



Member Training Workshops

Roger Gubbin

Penlaurel, Launceston

12th September 2020

Basic
Table Lamp

Sue Harker

Snainton, N Yorks

10th October 2020

Intermediate
Table Lamp (Long Hole Boring)

Mark Hancock

Pershore, Wilts

17th October 2020

Basic/Beginner
Log to Bowl

Paul Howard

Tiptree, Essex

27th November 2020

Inter/Advanced
Pagoda Box Making

Mark Hancock

Pershore, Wilts

28th November 2020

Intermediate/Advanced
Hollow a Closed Form

If a workshop is oversubscribed, there will be a ballot for places.

To apply - visit the AWGB website: www.awgb.co.uk and download an application form and send to the coordinator shown on the form.

Or complete a 'Training Workshop Application' web form.

Only fully completed application forms will be considered.

A Tale of Two Balls

Ron Davis

Ever wished you had said 'no' to something? Well I got close to it last year. I was asked to make a pair of balls (insert your own joke here!) and I said yes, turning two balls, how hard can that be? I found later that the request had done the rounds at the Bury St Edmunds Woodturning Club, so someone had a clue. The job was for two finials for a curtain pole.

Any way the customer came to me and brought the wood for the job. He brought two 300mm² blocks of Poplar for me to turn two 300mm diameter balls!



Picture shows one of them after my nephew trimmed the corners off with his chainsaw.

My first concern was that of balance, you can imagine what an out of balance piece could do in a small shed!

I used a face plate and revolving centre, and took the drive belt off the motor, and turned it by hand when the lathe stopped I marked the bottom and rotated it towards me and locked the drive.

The saw cuts were to make it easier to chip away at it. After several tries I got it so it did not stop in the same place each time, so I was ready to try and turn it. I put the belt and guard back, set the speed to slow and standing as far away as I



could get, and well out of the firing line, I pressed the 'on' switch. For both of these blanks it was a relief to find they were in balance and I could start turning.

First problem was that the banjo would not go under the blank; I used the long tool rest and had to take the job off the lathe to work on the other end!



Turning was straight forward, if hard work, made a template from hardboard and set about making shavings! When I got to this stage I needed to include a 115mm hole for the curtain rod. I retrieved my largest callipers from the club chairman (he borrowed them twenty plus years ago).



I made a drive by making a 115 spigot mounted on a face plate and turned the other end.

Two 300mm wooden balls, ready for collection.



My customer was delighted with them and took them for approval to his customer.

End of story? Not quite, I got an email later to say the customer wanted them 60mm. smaller, I nearly cried. I remounted them and as they were in balance re turning was easier than the first time round.

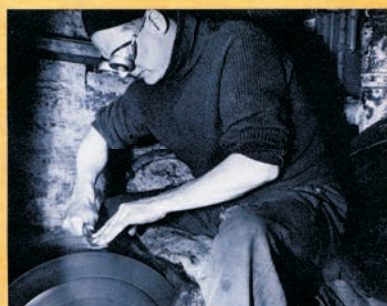
I got another email recently, which included this photo.



There is metal curtain rail underneath, so I was relieved that they did not want umpteen wooden curtain rings!

Ashley Iles
woodcarving & turning tools
made in the old tradition

Precision Made Woodturning Tools



Ashley Iles, Solly Street c.1958

Send £1.50* postage for our 49 page
Catalogue and Price List

*£5.00 Mainland Europe and Eire, £8.00 USA and Rest of the World

Ashley Iles (Edge Tools) Ltd, East Kirkby, Spilsby, Lincolnshire PE23 4DD
Tel: 01790 763372 Fax: 01790 763610
Email: sales@ashleyiles.co.uk
www.ashleyiles.co.uk



CHESTNUT P R O D U C T S FINISHING SCHOOL

Choosing an Oil

Oils are a great way of finishing many different items

quickly and easily. The extended drying time makes application over larger areas very simple, giving great results every time. Use on unsealed wood only.

1



1 Finishing Oil is a blended oil including tung oil, suitable for indoor and outdoor use. It has extra UV filters to protect the wood beneath and is hard wearing and water resistant. Safe for toys.

2



2 Hard Wax Oil is a clear, hard-wearing and water resistant finish with a slightly quicker drying time, usually about 4 hours. Builds to a high gloss finish very quickly. Safe for toys.

3



3 Lemon Oil is a clear, low build finish based on lemongrass oil. Giving a virtually matt, non-tacky, offering a water-resistant finish without a gloss effect - and it smells nice too!

4



4 This pure Tung Oil is suitable for interior and exterior use for a water resistant and hard wearing finish. Completely solvent free, this slower drying oil is ideal for those looking for a natural finish.

5



5 Food Safe Finish is a clear, food grade oil, popular on salad bowls, cheeseboards and associated items. Gives a soft satin finish resistant to cleaning with a damp cloth.

See our YouTube channel for more tips!
More information available from your
local stockists or contact us at:

PO Box 260, Stowmarket, IP14 9BX

Tel: 01473 890118

mailroom@chestnutproducts.co.uk
www.chestnutproducts.co.uk



What you need to do remote demonstrations

Paul Hannaby

Intro & background

My professional background is in electronics, communications and computer software. I have been a woodturner for over 20 years and have been doing demonstrations for clubs, the occasional trade show and seminars for over 15 years, teaching for around 12 years or so and have been known to write articles here and there too.

I initially decided to set up the capability to do remote demonstrations a couple of years ago. I got as far as buying some webcams but then other projects took precedence. This again came to the fore when the onset of the Covid-19 crisis and lockdown led to demos and tuition becoming casualties of the clubs shutting down and social distancing.

It was at that point many people realised that they needed a way to bridge the chasm between those offering demonstrations and tuition and their consumers. Internet video conferencing technology has been available in various guises for almost 30 years but was probably held back by expensive hardware, slow broadband and low bandwidth mobile communications. Recent years have seen quantum leaps both in broadband, mobile networks and computer peripherals so the union between carrier and broadcaster has become commonplace.

Principles and basics of the technology

The technology employed is to use two computer platforms connected to a central server via a common network (the internet). Each computer can have devices attached to provide video and audio signals, which are compressed and sent to the server for forwarding to the recipient(s). Each connected party can use their own connected devices so each party in the session each has access to audio and video from each of the others. Depending on the system in use, it is possible to connect anything from a handful to several hundred "interactive" parties in a single session and even higher numbers in a broadcast only mode.

The "interactive" element makes the technology attractive because the participants can talk or write directly to the broadcaster and others in real time, emulating the live demonstration or workshop while avoiding the travelling.

The ability to reach consumers without leaving their workshop is an attractive proposition to many turners who may spend more hours travelling than actually demonstrating. It also has the advantage of allowing the demonstrator to have their entire workshop at their fingertips rather than just what they were able to pack and transport.

Clubs and individuals now have access to turners who previously were out of their range, both geographically and financially. They also stand to save money on the demonstration costs because no travel or subsistence is involved. However, both then demonstrator and receiver(s) now have other equipment and communication costs but in the long term, these are perceived to be less than the previous travel costs. Clubs may also benefit by being able to pool resources with other clubs to save costs and also by

having the ability to include housebound members who wouldn't have been able to see the demo by allowing them to view remotely.

Internet connection and Network

Today's underlying video and audio compression protocols allow this technology to work with speeds in the low Mbit/s range. As an example, Zoom recommends 600 kb/s as the minimum and 1.5Mbit/s as ideal for up to 720p video. These speeds are well within reach with all but the worst rural broadband connections. Where this falls over is in reaching from the comfort of the turner's home where the wifi is (almost) perfect to the workshop at the end of the garden where the signal fades away! Even workshops attached to the house (like mine) may be through one wall too many to achieve a reliable connection so network extenders or extensions may be necessary. The simplest solution may be a long Ethernet cable (maximum length 100m) from router to workshop but the path between the two may influence the choice.

Other alternatives are wifi repeaters or powerline network adapters that use the domestic power circuit as a transmission medium. These only work reliably if the transmitter and receiver are on the same power circuit.

An alternative to a broadband/wifi connection would be to use a mobile smart phone or MIFI device to create a wifi hotspot connecting via the mobile network. If a mobile network connection is used, 3G or above should provide adequate bandwidth but 4/5G would be better. This option would only be workable if you were in a location with a reliable signal strength from a mobile network.

Computers

These days, computers come in many forms including desktop and laptop (with one of Windows, MacOS or Linux operating systems), tablets, phones and even TVs. Any of these devices which has the capability of running the application provided by the chosen broadcast system can be used as the base for operations. Phones, tablets and TVs may not have the facility for connecting all the external devices you plan to use but it is possible instead of connecting multiple cameras to a single computer to use separate computers in the form of phones and tablets as independent camera platforms by logging each one in to the server. This adds a layer of complexity to the broadcast software operation but isn't too difficult to manage.

The more cameras you connect, the more processing power you will need so don't expect that 10 year old PC to cope! However, as the camera resolutions may be higher than the maximum broadcast resolution, it may be advantageous to configure your software to reduce the effective resolution of the cameras to reduce the processing power needed and the size of any video files recorded.

Each platform has its own minimum specifications for host devices so it would be worth checking what your chosen platform would need.

Broadcast Systems

There are many systems out there to enable two way video conferencing and group meetings including Skype, Webex,

Zoom, ClickMeeting, BlueJeans, RingCentral and many others. Just search for video conferencing on the web to find many more.

Each system has its own pros and cons. My recent experience is limited to Skype, Webex and Zoom. I used to like Skype but since Microsoft took it over, it has been stripped of many of its useful features and now exists as two variants, the one that comes with Microsoft Office and the one available as a free download. Either would work for small groups but I wouldn't like to try to manage a large group with either version. Webex by Cisco only allowed up to three participants in the free version and a basic subscription price was out of range for many but they have now increased the free account to 100 participants and unlimited meeting length. In practice I have witnessed several Webex meetings which were disrupted by various technical issues preventing people from joining the meeting. Less than ideal if the participants are paying guests! Out of the three, Zoom appears to be leading in popularity and ease of use and is competitively priced for the demonstrator so we will concentrate on that one. However, I think recent events have made the players in this market consider their packages and price structure and competition is definitely moving up a gear so look at the options before committing your cash.

Video pre-processing Software

If you wish to use a single webcam or even multiple independent devices with one camera each, you don't need to worry about this part. You only really need video pre-processing software if you intend to use multiple cameras connected to a single computer or make use of other inputs such as images and pre-recorded video. The pre-processing software is used to configure each camera, preset zoom settings for different scenes, adjust for colour temperature and lighting conditions, set up advanced scenes with picture in picture, enable other inputs from still images, slide shows, videos etc.

Your choice of pre-processing software may be dictated by your computer operating system.

VMix is only available on PC/Windows. The free version allows up to two webcams at a low resolution. The basic licence allows up to four webcams at up to 1080p. VMix also supports NDI (Network Device Interface) for sending video over the network instead of via USB. VMix minimum processor requirement is at least a 2GHz dual core i5 processor but they recommend at least a 3Ghz quad core i7.

OBS (Open Broadcaster Software) as the name implies, is free and open source. This means the software has no limitations based on tiered subscription. It supports multiple webcams and NDI with the appropriate plugin. OBS is available for Windows, Mac and Linux. Processor requirements are at least 2Ghz dual core i5 processor.

There are other software packages available, some with considerable price tags so choose carefully!

Both OBS and VMix allow more than just webcam inputs. You can configure slide shows from images, inputs from recorded video and audio, web pages, application windows, desktops etc. which should provide for most eventualities.

I have tried both VMix basic and OBS. With the same webcam inputs, VMix used more processing power on my computer and was more complicated to use so I decided to go with OBS.

Cameras



The basic input method is a USB webcam. Ideally a resolution of 720p or 1080p is preferable. The webcam shown in the photo is a Logitech C920 which has a 1080 pixel sensor. These currently cost around £70 if you can find anywhere with them in stock! Since the Covid-19 lockdown, everyone has been buying webcams to communicate with the rest of the world so webcams are a scarce commodity at the moment but that will no doubt change.

Zoom in its basic configuration just broadcasts at 720p or less (it adjusts for available bandwidth) so higher resolution cameras may be unnecessary. However, Zoom can be configured to broadcast at 1080p but greater bandwidth is needed to do so and generally speaking, 720p provides more than acceptable viewing quality. In an ideal world, it would be best to have each USB camera input on a separate USB bridge but unless you are building a custom PC, that option may not be available, in which case use USB3.0 in preference to USB2.0 if both are available and use the higher resolution cameras on the faster ports.

If you have other types of cameras, you may be able to use those too. Some may have a USB port which can be connected to the PC in conjunction with some additional driver software so it appears as another webcam.

Canon just released software to enable their range of DSLRs to be used as webcams via USB. Other manufacturers may have already followed suit so it's worth checking. A DSLR



may be total overkill in terms of resolution but they have the advantage of greater control over the image and a choice of lens / zoom to get the best capture possible. Other alternative are to use a HDMI or composite video to USB converter for cameras with HDMI / composite output or to use NDI devices (smartphone, tablet etc. connected over your local network).

Audio

Good quality audio is essential for any demonstration. Otherwise the audience just isn't going to stick around. As you will be moving around possibly some way from the computer, wireless microphone would probably be the best solution.



This keeps the microphone close to your mouth so the sound of your machinery is just background noise rather than dominating. Given that any wireless device is going to either be battery powered or rechargeable, it would be advisable to have a backup either in the form of spare batteries or a second microphone. Either a clip on lapel microphone or one with a headset would be best for a demonstration.

Creating your "Studio"

Having obtained all the essential equipment, you will need some way of arranging and mounting it all to make it easy to use during your demonstration. The last thing you want to be doing is to have to move a long way from your lathe to check on proceedings on the computer so a laptop stand that could be sited conveniently would be a good idea. All the cameras need to be mounted securely and in positions to capture the action. Microphone stands with adjustable booms make good camera mounts for lightweight webcams. They may need an adapter (shown below) to convert the microphone screw to the camera tripod screw but these are easily obtained. Some microphone stands also come with one or two clips for holding a microphone that may be useful if you have cameras without a tripod screw.



Camera tripods can be used but generally, the camera has to be directly above the footprint of the tripod which means it may be farther away from the action. You



can get booms for camera tripods but they often cost more than a complete microphone stand. If the camera is a long way from the centre of gravity of either a microphone stand or tripod, you may need to counterbalance the stand to stop it tipping over.

Magnetic camera mounts with flexible arms are also handy as long as your lathe doesn't vibrate to the point where it would affect the image from any camera attached to it.

You can make your own camera supports from wooden battens, poles or anything you can fix securely and mount a camera.



Once you have figured out the location of computer, cameras and network connection, you will need to add power and network cables so you have power and comms to your computer (don't just rely on battery power – if it's running several cameras the battery drains much faster). You will probably need USB extensions too so you can position the cameras where needed.

Lighting

Even the best camera in the world will still produce flat and grainy images if the lighting isn't up to scratch. Most digital cameras struggle with wide differences in levels of illumination across a scene so to ensure parts of the image aren't burnt out, avoid spotlighting the areas of interest and set up lighting to give good, bright illumination across the whole scene. If that isn't possible, position the cameras to avoid dark areas of background which may influence the overall scene exposure. Almost any type of lighting can be used but bear in mind that fluorescent tubes may cause flicker on the video output but this may be reduced by ensuring your webcams are configured to the correct mains frequency to reduce flicker and sometimes changing the frame rate from 30 to 25 might also make a difference to flicker with minimal effect on the output stream. LED lights in the form of bulbs for lamps, strip lights and panels are available with high intensity for relatively low power consumption so those are probably the way to go if the budget allows. Portable LED studio lights are also available if you have any floor space left for yet more tripods!

Extra accessories

1/4 UNC bolts & nuts

Camera tripod screws are threaded 1/4 UNC so bolts and nuts with this thread can be used to make custom mounts or modify existing ones.

Tripod gimbals

Sometimes you want to be able to rotate the camera on the end of the tripod or boom. Gimbals allow rotation in one or more planes so you can position the



camera exactly where you want it. They cost very little so it pays to have a few!

Wireless keyboard



You can set up keyboard shortcuts so when you press a key the view switches to any of your preset scenes. Having to move from lathe to computer negates some of the benefit of shortcuts so a small wireless keyboard attached to the lathe allows use of the keyboard controls where the action is happening.

Rare earth magnets

Small powerful magnets can be used to attach things such as the wireless keyboard above to your lathe. I stuck three of these magnets to my wireless keyboard so I can attach it anywhere I want on my lathe.

Cable ties

Useful for cable management and fixing that broken microphone clip!

Putting it all in use

Now you have set up your workshop studio, you are ready to broadcast to the world (or at least some of it!). You can use your new capability for a number of scenarios.

Testing

Find a friend or two and set up a session using all your equipment. Use Zoom's settings to check your transmission rates and resolution and tweak the software as required to achieve stability and quality. Once you are happy, set up a demo for a small group, record it so you are able to play it back and analyse and ask the participants to feed back too. I changed my setup based on findings from my first couple of sessions and the suggestions and feedback resulting from them.

Point to Point Broadcasts

A broadcast to a single recipient could be used to do an interactive remote demonstration to a club. They would need a computer and viewing facilities such as monitors or projectors and screens and an audio facility to allow them to communicate with you easily.

A second use for point to point broadcasts would be either for small group workshops or one to one tuition. Remote teaching of this type may never fully replace hands on but it can be a useful tool to extend your reach as a tutor.

Broadcasting to multiple recipients.

Some club demonstrations may be to multiple recipients rather than just to the club meeting place. Or you may be

doing an independent demonstration where you are inviting a number of viewers, paid or otherwise. These would entail distribution of the meeting connection details to all recipients. In the case of a "pay per view" demonstration, distribution of the meeting details would need to be limited just to those who have paid for the service but you may choose to publish details of a free event for all to see.

Security

There have been questions raised about the way internet services such as these meeting platforms, social media channels etc. handle people's information. There is no such thing as a totally secure system. It is necessary to fix any vulnerability as they are identified to prevent exploitations by undesirable parties. That's why you see regular updates to your software. Recording sessions with video of participants should be approached with caution. If you intend to upload recordings for later viewing, you either need to obtain consent from those in the recordings or edit them out of the footage. Depending how you do your recording this may be easy or difficult – something else to bear in mind when staging live video sessions.

Useful links

Zoom video conferencing: <https://zoom.us>

Webex video conferencing: <https://www.webex.com/>

Skype video conferencing: <https://www.skype.com>

Adobe premiere video editor: <https://www.adobe.com/>

Lucid Woodturners - group of turners sharing information on use of technology: <https://www.lucidwoodturners.com>

**Woodart Products**

Magnetic LED Lights

Pyrography units – Razertip, Scorpion and Dragon

**Pyrography Accessories – Tips, Fume Extractors, etc..**

Micro-Drills – 35000rpm and 45000rpm units fitted with 1/8" (3.175mm) collet chuck

Cutters and Burrs for Micro-drills (and other rotary tools)

SUPERIOR POWER CARVING TOOLS

www.woodart-products.co.uk
john@woodart-products.co.uk
Tel.: +44 (0)7770 226640

Lathes. Gouges. Carving Chisels.
Waxes. Polishes. Pen Kits. Books.
Carving Blanks. Drive Centres.
THE. Bowl Blanks. Work Holding.
Abrasives. Power Carving. DVDs
ALADDIN'S. Measuring and
Marking. Chucks. Sharpening.
CAVE. Grinding. Coring Systems.
Spindle Blanks. CBN Wheels.
FOR. Exotic Timbers. Bandsaws.
Wood Threading Kits. Tool Bags.
WOODTURNING. Framing
Chisels. Hand Tools. Honing Kits.
AND WOODWORKING. Tool
Storage. Hollowing Systems.
Polishing Systems. Live Centres.
Extractors and Respirators...

The ToolPost

Unit 7 Hawksworth, Southmead Industrial Park, Didcot, Oxon. OX11 7HR
01235 511101 • www.toolpost.co.uk

sharing expertise