

Revolutions

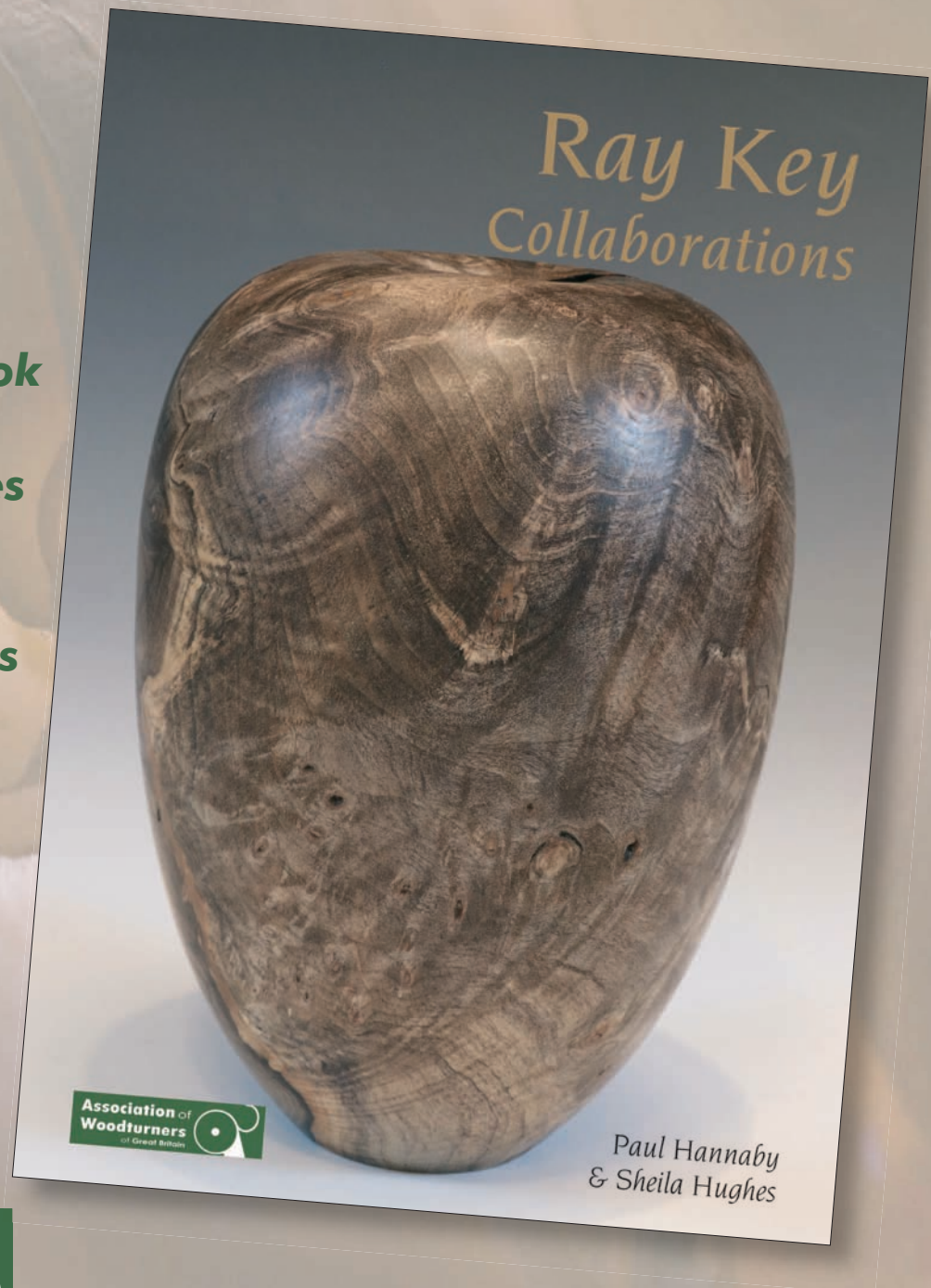
THE NEWSLETTER OF THE ASSOCIATION OF WOODTURNERS OF GREAT BRITAIN

Issue No 131

December 2019

Dont forget to renew your membership!

**Hardback book
of all the
finished pieces
in
Ray Key
Collaborations**



www.awgb.co.uk

A Company Limited by Guarantee - Company Number 8135399
Registered Charity Number 1150255

Corporate Members of the AWGB

Further information, including discounts, on the Corporate Members is available on the AWGB website.

Alan Calder Sandpapers Ltd.

Suppliers of high quality abrasives of many types at competitive prices.
Tel. 01538 387738
www.sandpapersupplies.co.uk

Ashley Iles (Edge Tools) Ltd

Woodturning and Carving tools traditionally made to a high specification.
Tel. 01790 763372 www.ashleyiles.co.uk

Axminster Tool and Machinery

Suppliers of quality woodturning products: courses from beginner level to advanced.
Tel: 0800 371822 www.axminster.co.uk

Biven Machinery Sales

Suppliers of quality woodworking, carving, woodturning, pyrography machinery, tooling accessories and consumables. Discounts available for AWGB members.
Tel: 01253 425793
www.bivenmachinerysales.co.uk

Charnwood

Woodworking machinery, lathes, chucks and accessories. Next day delivery throughout UK mainland. Tel. 01530 516926.
www.chnwood.net

Chestnut Products

Quality Wood Finishes with emphasis on products for Woodturners. See Chestnut Finishing School videos on You Tube.
Tel. 01473 890118
www.chestnutproducts.co.uk

Classic Hand Tools

Quality Hand Tool, Lathes, Turning and Carving tools. Tel. 01473 784983
www.classichandtools.com

Crown Hand Tools

Crown offer the largest range of woodturning tools worldwide, combining the perfect mix of tradition and innovation finished to the finest exacting standards. Tel. 01142 612300
www.crownhandtool.ltd.uk

English Hardwoods

Specialists in best quality, and unusual kiln dried hardwoods for all purposes
Tel. 07979 251497
www.english-hardwoods.com

Exotic Hardwoods

Specialist suppliers of all exotic hardwoods from all over the world. Tel. 01538 715 060
www.exotichardwoodsukltd.com

G&S Timber

Suppliers of timber, tools, lathes and accessories. Tel 01768 891440
www.toolsandtimber.co.uk

GPS Agencies Ltd.

Suppliers of alternate Ivory, Horn, Black Ebony and Acrylic. Also Pen blanks and larger turning stock. Tel. 01730 233366
www.gpsagencies.co.uk

Hampshire Sheen

Hand blended finishing waxes and atmospheric colour dyes. Tel. 01420 560077
www.hampshiresheen.com

Henry Taylor (Tools) Ltd

Woodturning, woodcarving and woodworking tools. Tel. 01142 340282
www.henrytaylortools.co.uk

Hope Woodturning

Designer and manufacturer of a range of quantity woodturning tools, Jigs and sanding systems. Tel. 01206 230694
www.hopewoodturning.co.uk

Lovell Workwear Ltd

Suppliers of protective smocks & aprons which can be personalised. Safety, Comfort, Style.
Tel 02920 598327 www.lovellworkwear.com

Max Carey Woodturning Trust

Registered Charity educating the public in woodturning. Courses available from beginner to advanced levels.
Tel 07976 420960
www.maxcareywoodturningtrust.org.uk

Mirka (UK) Ltd

Finishing products and tools including abrasive discs, strips and rolls, power tools and accessories. Tel. 01908 866100
www.mirka.co.uk

Olivers Woodturning

Woodturning tools, finishes, blanks. Woodturning club and forum.
Tel. 01233 613992
www.oliverswoodturning.co.uk

Paul Howard Woodturning

Woodturning Jigs, Fluting jigs, Sphere jig, Copy fingers, Woodturning accessories.
Tel 01621 815654
www.paulhowardwoodturner.co.uk

Robert Sorby Ltd

Tools, lathes and accessories.
Tel 0114 2250700 www.robert-sorby.co.uk

Snainton Woodworking Supplies

Everything for the Woodturner.
Tel. 01723 859545
www.snaintonwoodworking.com

Stiles & Bates

Comprehensive Woodturning Supplies since 1996. Tel. 01304 366360
www.stilesandbates.co.uk

T&J Tools

Abrasive and sharpening products.
Tel. 07973576554 www.t-jtool.co.uk

The Toolpost

The one stop resource for craftsmen and women around the world. Tel. 01235 511101
www.toolpost.co.uk

Turners Retreat

Complete range of woodturning tools and courses. Tel. 01302 744344
www.turners-retreat.co.uk

W.L. West & Sons Ltd

Timber, Machinery, Turning & Carving tools, accessories and books.
Tel 01798 861611 www.wlwest.co.uk

Woodturning Magazine (GMC Group)

Best selling magazine for Woodturners. Supplies of books, DVDs and magazines.
Tel 01273 402871 www.thegmcgroup.com

Yandle & Sons Ltd

Everything for the Woodturner.
Tel. 01935 822207 www.yandles.co.uk

Woodart Products

Magnetic & non-magnetic LED lights. Pyrography units & accessories. Micro drill/detailer – Carbide piercing cutters & burrs - and much more. Tel. 07770 226640
www.woodart-products.co.uk

DATA PROTECTION

Your personal details are held on computer for the use of the AWGB. We only use this information to run the organisation. If you would like to know what information we hold and how we use it, please contact the Secretary.

Front Cover

The AWGB commemorative Ray Key Collaborations book

Revolutions

Copy deadline for the next edition of **Revolutions**
3rd February 2020

The AWGB is a Company Limited by Guarantee and a Registered Charity. It is administered by a group of elected Trustees who are also Directors of the Company. The Trustees meet at least twice each year and at the AGM. When they meet together they are known collectively as the "The Executive". Additionally, there are a number of people who assist the Trustees in their duties. These people are not elected and are known as "Volunteers".

TRUSTEES OF THE EXECUTIVE

President

Phil Irons
Box Acre, Barton Rd,
Welford on Avon CV37 8EY
07774 212635
philirons@awgb.co.uk

Chairman

Paul Hannaby
Windrush, High Street,
Drybrook GL17 9ET
01594 544417
chairman@awgb.co.uk

Vice Chairman

Derek Puplett
Baldungan, Derby Lane, Shirley,
Ashbourne DE6 3AT
01335 360388
vicechair@awgb.co.uk

Treasurer

Jeff Belcher
Oak House, Hanley Castle,
Worcestershire WR8 0BJ
07798 746296
treasurer@awgb.co.uk

Secretary

Peter Lyons
07711 933053
secretary@awgb.co.uk

REGIONAL REPS

Scotland

David Willcocks
91a Easter Bankton
Livingston EH54 9BE
07738 169561
scotrep@awgb.co.uk

North

Brian Mouat
17 Lon Dderwen, Abergele
Conwy LL22 7DW
01745 833970
northrep@awgb.co.uk

Midlands

Pat Murphy
72 South View Road, Carlton,
Nottingham NG4 3QL
07918 613762
midlandrep@awgb.co.uk

South East

Colin Smith
130 Broad Oak Way,
Stevenage SG2 8RB
01438 727495
serep@awgb.co.uk

South West

John Montgomery
150 Cleeve Drive, Ivybridge,
Devon PL21 9DD
01752 894083
swrep@awgb.co.uk

Chairman's Notes

Paul Hannaby

Christmas appears to be looming on the horizon all too quickly. Just where did 2019 go? My workshop tidy up seems to still be ongoing. I think I just need to turn wood faster than I acquire it instead of the other way round! I'm still looking at ways to store everything more efficiently. Maybe one day I will get there but I have my doubts!

Ray Key Collaboration

Since the last issue, we have seen the final stages of the Ray Key Collaboration auction which finished with sales totalling £30,000. A fantastic end to what turned out to be a major undertaking but very much worthwhile. As I write this there are still a few winning lots to unite with their buyers. Once that's done, I think it's time for a break before diving in to whatever 2020 holds.

We have plenty of the Ray Key Collaborations books for sale which catalogue all the pieces in the collaboration and include the inspiring and moving text from each of the collaborators. The books are A4 sized hardback suitable to grace any coffee table! Something to add to your Christmas list perhaps....

Volunteers

We are still looking for assistant regional reps in some regions. The assistant reps are planned to extend our coverage in each region to improve communications with clubs and to assist the reps with attendance at shows. Please contact me or the rep for your region for further information if you are able to assist or are interested in finding out more. Remember the AWGB is entirely run by volunteers and is reliant on their help. Our efforts are only limited by the resources at our disposal so please give some thought to helping out.

Membership Secretary

John Peachey has taken over as membership secretary and appears to be getting stuck in! Please send your renewals to him.

More on Masterclasses

Nobody seemed interested in mini-seminars so we have started to roll out the new masterclasses instead. These are an extension to our training programme and will require a financial contribution from the member which will be matched by the AWGB. The format is a two day workshop with two first class turners to advance their skills and perhaps spark a few new ideas. These will be advertised in Revs and on our website / social media so if you are interested, keep an eye out for updates.

Training

We didn't quite get 20 workshops on the schedule for 2019 but our new training and development team are working hard to make sure we get the full complement for 2020 so we can book as many members as possible on our training workshops. If you want a workshop on a particular topic, please ask – we try to work any requests into the schedule.

VOLUNTEERS

Assistant Treasurer

Mike Mansfield
27 Grenville Meadows
Lostwithiel, PL22 0JSD
01208 872012
asst-treasurer@awgb.co.uk

Membership Secretary

John Peachey
37a Oxstalls Lane, Longlevens
Gloucester GL2 9HP
01452 525976
membership@awgb.co.uk

Youth Training

Ron Caddy
Acorn Crafts, 23 Wisley Road
Andover SP10 3UQ
07903 313065
youthtraining@awgb.co.uk

Workshop & Training

Alan Buckle
15 Churchill Drive, Martin Dales,
Woodhall Spa, LN10 6XY
07866 682247
workshops@awgb.co.uk

Newsletter Editor

Sheila Hughes
49 Essex Street,
Newbury RG14 6QR
01635 45930
editor@awgb.co.uk

Health & Safety Officer

Martin Dickinson
01890 840635
hs@awgb.co.uk

Trade & Business Liaison

Roger Phebey
Meadow Lodge
15C Charvil House Road
Charvil RG10 9RD
07843 370006
trade@awgb.co.uk

2020 Seminar Bookings

Stephen Evans
seminar@awgb.co.uk

PR Officer

Vacant

Webmaster

Vacant

Seminar 2020

Bookings are now open for the 2020 Seminar. It will build on the improvements at the last seminar and hopefully will prove to be even bigger and better. More information is on our website and elsewhere in this issue. Don't forget, early booking will save you money on the cost too.



Colwin Way
UK



Emmet Kane
Ireland



Jacques Vesery
USA



Mary Ashton
UK



Richard Raffan
Australia



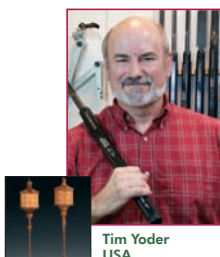
Sally Burnett
UK



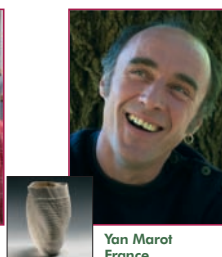
Jocelyn Naigeon
France



Willie Creighton
Ireland



Tim Yoder
USA



Yan Marot
France

Another year draws to a close

Looking back at 2019, there have been a few changes, hopefully for the better; a few new faces on our team and some new initiatives which raised the profile of the AWGB both at home and overseas. There will no doubt be more changes next year as the AWGB continues to evolve. I'm looking forward to seeing what's next – after the mince pies and turkey and a short break! I wish all our members a merry Christmas and a peaceful and plentiful new year in the wood store! Thank you for your continued support and remember to tell all your woodturning friends about us!

Martin Davies. Cambridge Woodturners

Another stalwart of our club, Martin Davies passed away in late October.

Every Club has a Martin. We knew Martin as our Camera man and fellow club member, but he was a fine woodturner who loved making screw top boxes.

I first met Martin back in 2006 and over the years we had many a chat at club meetings and at seminars. This years 'Chestnut Weekender' was the last time we had a long chat. Once you got to know him the humour and knowledge came through, and we had many a laugh at the Cambridge Club meetings. He was always there at meetings at Perne Road, Cambridge setting up the cameras and you could receive the sharp edge of his tongue if you got in the way before he had arranged everything. It worried him that somebody might trip over the cables and pull the screens of their mounts. His camera work was excellent and believe me I have seen many who could have taken lessons from him. When we moved to the Babraham Institute he was able to leave the camera and screens set up in their permanent position. A great relief to him.

Martin was always ready to help at many events where he demonstrated his skill of threading boxes. I worked along side him for several years at 'Gilwell 24', an annual 24 hour Scout Camp in Essex.

This years CamJam, an International Jamboree we entertained the scouts for hours. Martin answering their questions and showing them how to thread the box lids.

He willingly helped at club 'Beginners' sessions and demonstrated at club events and meetings.

The loss of his wife a few years ago hit him hard and although he soldiered on, he confided in me last month that he feared his woodturning days were numbered as the feeling in his hands and feet was going, he said his diabetes was to blame.

I will miss his company and knowledge and friendship, and he will be sorely missed by Cambridge Woodturners

RIP my friend

Colin Smith
Chairman Cambridge Woodturners



W.L. West & Sons Ltd
Selham, Petworth, GU28 0PJ
t: 01798 861611 f: 01798 861633

- Hardwoods
- Wood finishes
- Australian Burrs
- Exotic Timbers
- Woodturning Blanks
- Woodturning Courses (see website for dates)
- Woodworking Machinery
- Woodworking Tools
- Fencing, Gate & Decking Products
- Bespoke Garden Furniture

Timber, Tools & Machinery for D.I.Y • Carving
Woodturning • Furniture Projects
shop@wlwest.co.uk

Off A272 Midhurst to Petworth road opp The Halfway Bridge Inn

RECORD POWER
SHEFFIELD • ENGLAND

Open: Mon-Fri 8-5 & Sat 9.00-1.00pm
www.wlwest.co.uk

Notice is given that the
ANNUAL GENERAL MEETING

of the
ASSOCIATION OF WOODTURNERS OF GREAT BRITAIN
(A Company limited by Guarantee - Company No. 8135399)
will be held at

St Cuthbert's Community Hall, Sharp Street, Burnley, Lancashire BB10 1SL
On Sunday 29th March 2020 commencing at 1.00 pm

Regarding Trustee positions on the Executive:

Colin Smith, South East Regional Representative, will be resigning at this AGM and will be replaced by John Abercrombie. John Montgomery is also resigning at this AGM and nominations for a replacement are currently open.

Pat Murphy and David Willcocks, Regional Representatives for the Midlands and Scotland respectively are due to retire at the AGM, but are willing and have been nominated to continue in their current roles.

Peter Lyons Secretary, Roger Phebey Trade & Development Manager, Mike Mansfield Assistant Treasurer, John Peachey Membership Secretary and Stephen Evans Seminar Co-ordinator, have all been co-opted during the year and will be formally elected at the AGM.

The Secretary has requested, where necessary, nominations from Branches for the positions of Regional Representatives. Under Section 324 of the Companies Act 2006 and the Articles, a member is entitled to appoint another person as their proxy to exercise all, or any of their rights to attend, speak and vote at the AGM. The appointment must be in writing and notified to the Secretary before the meeting.

A Corporate member may nominate a person to attend on their behalf, in writing to the Secretary, before the meeting. As usual, there will be tables on which to exhibit attendees work for submission into the Chairman's Prize Competition. Tables will also be available for the sale of tools and the like.

The AGM will be preceded by a meeting of members and Branch Representatives, which will commence at 11.00 am and be Chaired by Paul Hannaby.

If you are attending either or both meetings, please notify the Secretary by 15th March 2020 to enable numbers for lunchtime catering to be given.

The Secretary can be contacted at secretary@awgb.co.uk or on 07711933053

ANNUAL GENERAL MEETING
of the
**ASSOCIATION OF WOODTURNERS
OF GREAT BRITAIN**

(A Company limited by Guarantee - Company No. 8135399)

Will be held at

**St Cuthbert's Community Hall, Sharp
Street, Burnley, Lancashire BB10 1SL**

on

**Sunday 29th March 2020
commencing at 1.00 pm**

Agenda

Apologies for absence

Acceptance of the minutes of the 2019 AGM

Matters arising from 2019 AGM minutes

Treasurer's report for the year ending 31st
December 2019

Chairman's report

Announcement of the ballot for Trustees

Vote on appointment of Accountants/Auditors

Result of ballot on any Resolutions

Any other business

Liz Key sends the following letter to the collaborators included in the Ray Key Collaboration.

Dear Friend,

*Thank you for your beautiful artistic creations,
produced for the Ray Key collaboration auction.*

*I can't tell you how touched both myself and my
son Darren were to see such beautiful work.
Ray would have been very proud of your
generous gift and friendship. All have been
wonderful friends to Ray and myself for a long
time.*

*Thank you from the bottom of my heart for the
sensitivity shown in producing this wonderful
body of work. My grateful thanks and respect
goes out to you all.*

Liz

The Creative Craft Show Manchester 5th to 7th September 2019



The Creative Craft Show is the North West haven for knitting, cross stitch, paper craft, jewellery, textile, dressmaking and stitching enthusiasts; offering the latest supplies, ideas and innovations in the hobby world! (this quote was taken from the organiser's website).

"Who's daft idea was it to come to an event like this?" was the question asked by one of the turners who had agreed to demonstrate at the show.

The reason was to promote woodturning to a wider audience, albeit that over 90% of the attendees were ladies because of the nature of the event.

As well as having the travelling gallery of exhibits we also had a lathe, kindly loaned by Axminster Tools Warrington with members from The Cheshire Guild of Woodturners, High Peak Woodturners and Woodturners Association of Gwynedd with two turners demonstrating on each of the



Come and visit our warehouse at Megcroft Farm and see our extensive selection of exotic and native hardwoods, it's best to phone first.

You can also order directly from the website at www.exotichardwoodsukltd.com

Email: hello@exotichardwoodsukltd.com

Tel: 01538 715 060

Exotic Hardwoods UK Ltd

Megcroft Farm • Onecote Road • Ipstones
Staffordshire • ST10 2NB

All Seminar delegates are welcome to visit us here and have a look at all the wood. ***You won't be disappointed.***





days. I am pleased to say that all the turners engaged with the observers and I believe some of them made sales of their work.

The travelling gallery attracted a lot of attention and whilst we were not rushed off our feet we had a steady flow of people interested in the exhibits. People were amazed at the quality and diversity of the items on display, every piece appealed to someone, comments heard included:-

I don't believe its MDF

How do they get the wood so thin and the piercing must have been done with a laser?

How long did it take to do the pyrography in the vase?

That piece reminds me of something from the seabed.

Whilst we did not sign up any new members – we were able to tell people of their nearest club or via the handout direct them to the AWGB website. (It would be useful if clubs could provide feedback on people contacting them as a result of the information given at shows).

My thanks to the turners who gave up their time to entertain and enlighten the visitors on each of the three days.

On more than one occasion people said "Turning is not a hobby or a craft it is ART"

Would I do it again? Yes

Would I change anything? *Probably not.*

Brian Mouat



Volunteers Required

**To run the AWGB we need some new Volunteers:
We need a Secretary, a webmaster/data manager.
and assistant regional reps in the South East, Midlands,
North and Scotland regions.**

The assistants would help with club liaison and shows.

**We also need volunteers for the general running of the AWGB
so if you think you can help please contact Paul.**

**For more details about these positions contact Paul Hannaby
chairman@awgb.co.uk or 01594 544417**

AWGB Decorated Bowl / Platter Course with Mary Ashton

Steve Penfold – Member of the Avon and Bristol Woodturning Club

A most enjoyable, educational and rewarding day at the Orchard Wood Workshop with excellent tuition provided by Mary Ashton.



Four students attended the course and each turned a decorated sycamore platter of approximately 12" diameter. The day started at 09:30am and the first task, following a health and safety brief, was to rough turn the blank and cut a smooth surface on the base on which to practice our texturing skills. Mary then presented and explained a selection of texturing tools and whilst clearly explaining the correct presentation angles proceeded to demonstrate a series of different patterns. Each student then practiced creating these patterns on the underside of their platter. We were encouraged to record how we had achieved our favourite textures, which tool used and angle of presentation, in order to re-produce our chosen decoration on the platter top rim. To conclude the morning session the underside of the platter was recut and turned to the desired finished profile, wet sanded followed by an application of oil.

The afternoon challenge was to complete the profile of the top surface in preparation for texturing and colouring all to be achieved within three hours. The top surface of the platter was turned true and dry sanded. Using the appropriate texturing tool each student created their



own desired design. A selection of colours were available and a chosen colour was applied evenly with a small paint brush. Once the colouring had dried a covering of liming wax was applied and then wiped off to accentuate the pattern. Finally the inner profile of the top surface was turned, wet sanded followed by an application of Danish oil.



Although each student followed the same approach demonstrated by Mary it was surprising, yet satisfying, that each platter had different patterns, colours and profiles. The team concluded the day with a group photo proudly presenting their finished platters. Thank you Mary for all your tuition and preparation work and thank you to the AWGB for giving us the opportunity to attend these membership training courses.

Membership renewals are due at the end of December complete the membership form on page 29. If you are renewing as individual members you can either send a cheque with membership number on the back or standing order / bank transfer with membership number and surname as the reference.

Demonstrator Training and Tutor Assessment courses

John Montgomery

So far this year I have organised 5 Demonstrator Training courses with the last being on the 9th November with two months of the year left. These have been at West Lothian, Weston super Mare, Plymouth, Barnet and Droitwich. All these courses have 4 members on them and last from 8.30am until 5pm. I still have members awaiting courses and you will find an advert asking for applications from other members in those areas in which we have members waiting.

On the Tutor Assessment front we have so far this year organised 8 assessment days with the last being held on the 14th December. This means that this year 32 members have had an assessment day so far. These Assessment days have been held in a wide ranging area to try and cover the need. At present I still have members awaiting courses and you will find an advert asking for applications for these in Revolutions.

I first took on the job of Coordinator for Demonstrator Training after the initial course was held at the Max Carey Trust back in 2008 and then the Instructor Training Course which started in 2012 and later changed to Tutor Assessment in January 2016.

I have now decided it is time for me to step down from what has been a very enjoyable role and hand over to someone else. I would like to thank all the Tutors and Assessors for all their support and help, particularly Peter Bradwick, along with all the people who have helped in finding venues for

me around the country. It is always a team effort and I was lucky enough to have had a very helpful team. I wish my successor every success with these courses.

Southwest Representative Report

John Montgomery

It is coming up to the winter period when members tend to be busy in the workshop turning Christmas gifts. Some members turn more during the winter period as they are out and about in the better weather where some members decide to stay in the warmth of the house instead of venturing into the workshop. I am fairly lucky in that I have insulated the walls and roof in my workshop and a small oil filled electric radiator warms it up inside ½ hour when I turn it off.

All the shows I attended this year were later in the year with Yandles in September when I met a lot of members as well as enquiries from people looking for clubs in their areas. The show was very well attended which could be due to having just the one show at Yandles this year.

Early in October we attended RHS Rosemoor in North Devon with the gallery and also demonstrating. It is a very nice venue with lovely gardens for those attending to look round as well as the Woodfest Show which is everything from tree harvesting, trimming trees to finished articles in wood. I would like to thank Colin Simpson who demonstrated on the Friday, Bryan Milham who demonstrated Saturday and Liz Kent who demonstrated Sunday and helped with the packing at the end. They all gave up their time to help me on the stand and we have already been invited back next year on the good show we put up this year.

I have visited some of the clubs in my region so far this year and hope to visit others before the end of March next year. I have decided not to stand for re-election at the next AWGB AGM after a number of years as Southwest Representative, and would like to thank all members in my area and others from outside for their support during this time. All clubs I have visited in this time have treated me very well and I would like to thank them for their support and hope they thrive in the future.

Happy turning and best wishes for the New Year.

ROUTER LATHE WANTED

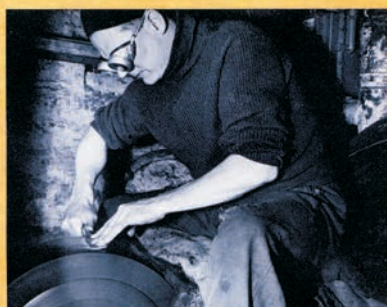
Please contact Louis on 01435 865032
or 07774 988373 anytime

I can arrange payment by BACS
As I am disabled I am unable to collect
but will arrange for DPD to do so
Thank you

Louis (AWGB No 16269)
56 Meadow Way
Heathfield TN21 8AL

Ashley Iles
woodcarving & turning tools
made in the old tradition

Precision Made Woodturning Tools



Ashley Iles, Solly Street c.1958

**Send £1.50* postage for our 49 page
Catalogue and Price List**

***£5.00 Mainland Europe and Eire, £8.00 USA and Rest of the World**

Ashley Iles (Edge Tools) Ltd, East Kirkby, Spilsby, Lincolnshire PE23 4DD
Tel: 01790 763372 Fax: 01790 763610
Email: sales@ashleyiles.co.uk
www.ashleyiles.co.uk

Correct Use of Machines for Cutting Wood

Martin Dickinson

Health and Safety AWGB

Shortly after taking up the post of Health and Safety for the AWGB, I received a telephone call from a member asking if I was interested in the fact that he had had an accident with his saw bench at home.

Being a safety professional – YES I am always interested in accidents, incidents and near misses.

- To hear the facts which lead to the accident, incident or near miss.
- To hear how the person is regarding any injury.
- To see what took place to cause the accident, incident or near miss.
- To see what corrective action can be advised to prevent such an occurrence happening again.

On this occasion the individual (who is a member of the AWGB) was using his saw bench to trim the side of a piece of timber to reduce it near to the finished size required.

The machine being used was not a new model, one that had been purchased second hand.

At the time of use, it did not have a crown guard in place, it did not have a riving knife in place. Initially a push stick was being used, however a second stick was picked up to use as a push stick – this second stick was an off-cut piece of timber which was quite short in length.

The gentleman concerned is recently retired from his occupation where he drove fork-lift trucks during his work activity.

During the cutting/trimming of the piece of timber on his saw bench, he was using the improvised push stick in his left hand quite close to the piece of timber on the saw bench. The next thing the gentleman knew was he had cut his hand which did not bleed that much (as he said) and managed to stop his machine and raise assistance from members of his family.

He was taken to his local clinic where the wound was looked at, the wound was a cut to his left thumb which had nicked the knuckle joint in the thumb. The clinic advised the gentleman and his escort to proceed to the nearest hospital as the injury was more than they could deal with even though they did dress the injury to contain the bleeding.

On arrival at the Hospital the gentleman was seen by the A&E section during which time one of the medical staff asked if he could still bend his thumb. It was at this point the gentleman's thumb joint gave a cracking sound which alarmed the medical staff. The cracking sound was the tendon separating from the thumb joint and retracting up his arm.

The gentleman was then advised to transfer to a main hospital for further treatment, the treatment took place the following day as the operation to repair his thumb would normally have taken 45 minutes, however as the surgeons had to go fishing for the tendon up his arm the procedure

took over two hours. He had the tendon re-attached to the knuckle of his thumb with a plate and screw to secure it, then the hand was placed into a plaster cast to immobilise it.

The gentleman was not allowed to drive for a period of six weeks and obviously the wood working activities were curtailed for a period of weeks. After the plaster cast was removed and the surgeons were satisfied the injury had healed sufficiently the gentleman started physiotherapy on the hand to build back the muscle and get the thumb and parts moving the way they should.

Had the gentleman still been working he would have had to be off work for at least 16 weeks if not more depending on how good his recovery was.

Although a great number of members are retired there are still a considerable number who are still working. Loosing the amount of time through injury caused carrying out a hobby is a burden not only on the individual but also on the family as in having to be driven around for doctors and hospital appointment plus any other area's the person wants to go to for whatever activity. In addition there may be financial restriction due to lack of income to the household.

Getting back to the saw bench, it is surprising how many people take guards off to carry out various activities, sometimes the guards are replaced straight away other times they are left off and end up collecting dust under a bench.

Please look at your machines, be they a saw bench, planer, drill, bandsaw in a serious light and if necessary, put the guards back in place and connect the dust extraction.

If the machine is of an age where there was not a guard in place when you purchased it, contact your local supplier to ascertain if a guard can be retro fitted. As a last resort consider replacement of the machine.

I always say to people the human body is a marvellous machine, however spare parts are hard to come by. If a car gets a broken head light you can get a replacement at the garage/auto shop. If you get something in your eyes, you only have one pair which are used daily and do not come with spares. The ten most important tools in your workshop, are on the ends of your hands, your fingers and thumbs. With them you can do wonders, without them, you adapt but trying to fit that fiddley nut and bolt or hold that special tool – you will be struggling.

So please for your own safety and that of others around you, think carefully about removing guards or adapting any machine. It may be harder to do it using hand tools, it may take longer but hopefully you will be intact and more appreciative of the job you have just completed.

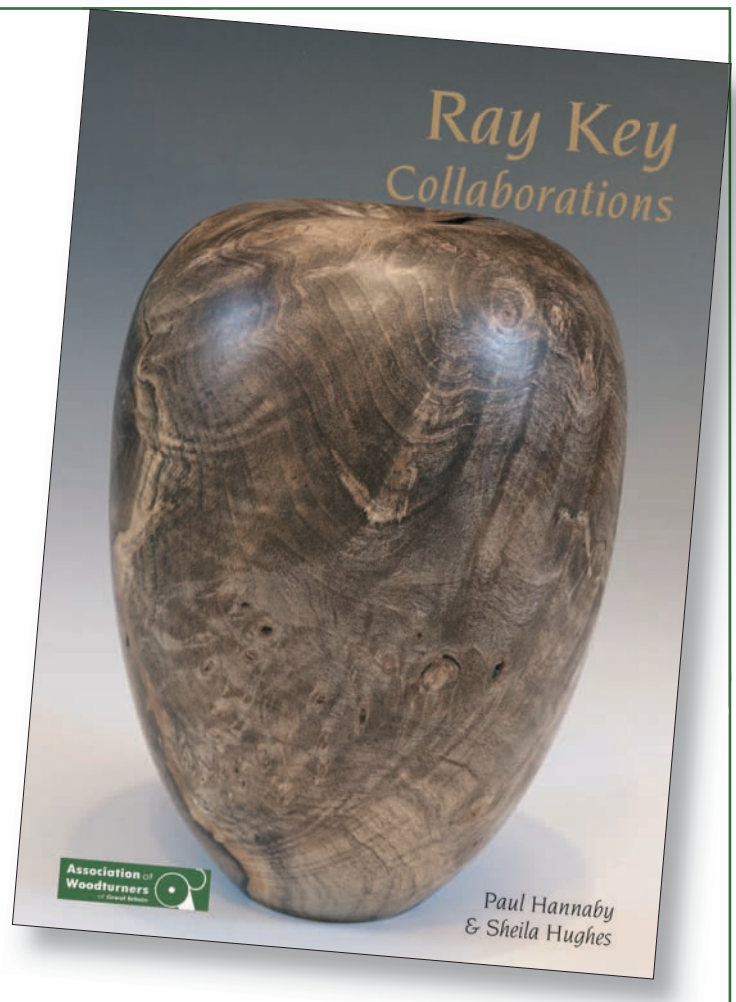
Take care

**Association of
Woodturners**
of Great Britain



**The AWGB have produced
a commemorative
hardback book of all the
finished pieces in
Ray Key Collaborations
which can be purchased
online at
www.awgbseminar.co.uk**

Background information and photos of the
Ray Key Collaborations are on the
AWGB website
www.awgb.co.uk/ray-key-collaboration



Woodart Products

Magnetic LED Lights



**Pyrography units –
Razertip, Scorpion and Dragon**



**Pyrography Accessories –
Tips, Fume Extractors, etc..**



**Micro-Drills –
35000rpm and 45000rpm units
fitted with 1/8" (3.175mm) collet chuck**



**Cutters and Burrs for Micro-drills
(and other rotary tools)**



Razertip® KUTZALL SABURRTOOTH
SUPERIOR POWER CARVING TOOLS

www.woodart-products.co.uk
john@woodart-products.co.uk
Tel.: +44 (0)7770 226640

ProEdge Sharpening refined

The Robert Sorby ProEdge offers effortlessly repeatable sharpening every time.

Features and benefits:

- Change belts in seconds
- Flat bevel rather than hollow grind
- Wide range of grits and abrasives
- Belt sharpening lowers risk of overheating
- Sharpen at exactly the same angle every time
- Nine factory indexed settings provide a guide for all types of tool
- Can be locked between indexes for custom settings

Wide range of accessories to suit all sharpening needs



"I really liked the system and recommend it. It was quick and simple to set up and very easy to use. I really believe that my tools were sharper than when sharpened on a wheel."

Joseph M. Herrmann, Editor,
Woodturning Design

**Woodturning
Design**



Proudly Made in
Sheffield, England
Patent Number: 2438962

Robert Sorby
The Robert Sorby ProEdge: Sharpening made simple

www.robert-sorby.co.uk

Allan Calder's Ltd Sandpaper Supplies

Unit 2B Churnet Works, James Brindley Road,
Leek, Staffordshire ST13 8YH



We are supplying top
quality brands of
sanding abrasives for all
types of wood turners.

www.sandpapersupplies.co.uk

Email: sandpapersupplies@yahoo.co.uk
Tel: 01538 387738

**Association of
Woodturners**
of Great Britain



Want a workshop in your area?

**Let us know what you want and
we shall arrange it.**

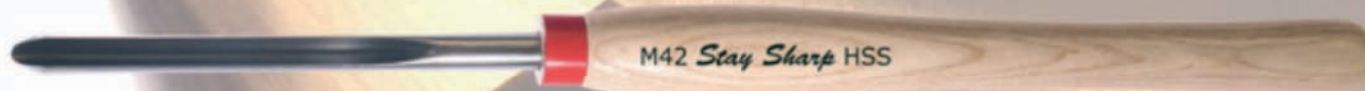
There is scope for more workshops for 2020, therefore if you have a preference for any particular technique with a professional woodturner, or you know of a venue in your area that could host a Member Training Workshop contact Brian Hensby and he will arrange a workshop to suit your requirements.

Workshops are a **'free member benefit'**, however candidates have a no obligation option to make a donation to the Development Fund.

**Please contact Alan Buckle
e-mail workshop@awgb.co.uk
Tel: 07866 682247**

hamlet
CRAFT TOOLS
Sheffield England

Now
available in the
Glenn Lucas range of
products



M42 Turning Tools

Stay Sharper - Longer

Now available: 1/4"; 3/8"; 1/2" Bowl Gouges; 3/8"; 1/2" Spindle Gouges
with red-ferruled ash handles, or unhandled, at prices you can afford

Live The Dream - Talk to your Hamlet or Henry Taylor Stockist - TODAY!

Fenland Woodturners Club



In 1994 neighbours Alan and Trevor discovered they were both interested in woodturning, after each having an interest in a Cherry tree in the neighbours garden. From a comment that there must be many woodturners working away in their sheds and maybe they would be interested in meeting with other like minded turners. Ian placed an advert in the local press announcing a meeting on 14th Dec 1994. That night 14 people attended and agreed to form a club. It was decided to call ourselves The Fenland Woodturners Club as those attending came from a wide area. We still have 5 Founder Members active in the club.

The aim of the club is to promote woodturning and to assist members to develop and improve as they gain experience. Meetings have always been held monthly on the last Wednesday of each month (earlier in Dec). Initially meetings were based on general discussion and relationship building, eventually developing to experienced members giving demonstrations. This allowed us to gain a sound financial footing as membership increased.

Eventually membership had grown sufficiently to allow a program of professional demonstrators on alternate months. The interceding months are classed as 'Natter Nites' providing a mixture of social interaction, an opportunity to discuss successes failures and how-to's. The club has two lathes which on these evenings are used to help explain processes to those seeking to develop skills.

Club competitions are held 4 times each year. Judging is by secret ballot by those present. Entries are divided into two categories Novice and Experienced. Votes count to an overall winner each year.

Today our membership is approaching 60 who are drawn from an area of 25 mile radius.

Membership renewals are due at the end of December complete the membership form on page 29 If you are renewing as individual members you can either send a cheque with membership number on the back or standing order / bank transfer with membership number and surname as the reference. Individual members will receive their membership cards when they renew.

**Association of
Woodturners**
of Great Britain



Member Training

Demonstrator Training

2 members required for course in
Cambridge area

3 members required for course in
Llandrindod Wells area

3 members required for course in
Exeter area

Tutor Assessment

3 members required for
assessment day in Presteigne,
Powys area

2 members required for
assessment day in Ripon/South
Shields area

2 members required for
assessment day in
Swansea/Cardiff/Newport area

Please submit applications for the courses using the forms in training sections of AWGB website. Or contact johnmontgomery@awgb.co.uk or 01752 894083 for application forms



International Auction of Ray Key *Collaborations*

Ray Key Collaboration – The Conclusion

The auction of the 118 Ray Key Collaboration pieces finished with sales totalling £30,000. I'm sure you will agree it has turned in to a fitting tribute to Ray. The part turned pieces Reg Hawthorne and I gathered up from Ray's workshop towards the end of 2018 were sent to turners from five continents to finish in their own style. The returned pieces were photographed for inclusion in the book and became part of our three week exhibition at Nature in Art, Gloucester July 19. The auction ran up until the 13th of October and all 118 pieces have been sold. Ray's part turned pieces and the efforts of the 124 collaborators have turned into a considerable legacy. The proceeds of the sale will be divided between Liz Key and the AWGB. I would like to thank Liz and family on behalf of the AWGB for their generosity and for allowing the project to take place.

The AWGB's share of the funds will be used to set up a "people's choice" award for the seminar, for which we have purchased a piece of Ray's work as the trophy. The winner of the award will be voted for by the delegates at the seminar. We have also set up the "Ray Key bursary award" which is intended to provide a package of training, mentoring and support for individual members identified as prodigious turners. The intention is to tailor the package to the individual to provide what is considered necessary to enable them to advance as a turner and to reach their potential.

If you are looking for a memento of the project, we have plenty of the Ray Key Collaborations books for sale which include before and after photographs of the pieces in the collaboration and amazing comments and memories from each of the collaborators. Some of the stories are humorous and some are touching reminders of a friend lost. The books are available from our website and at shows where we are in attendance.

AWGB International Woodturning Seminar

9th to 11th October 2020

Yarnfield Park Training and Conference Centre

Stone Staffordshire ST15 0NL

9-11 OCTOBER
2020
AWGB
INTERNATIONAL
WOODTURNING
SEMINAR
Your turn to be inspired



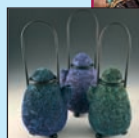
Colwin Way
UK



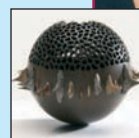
Emmet Kane
Ireland



Jacques Vesery
USA



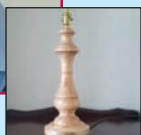
Jocelyn Naigeon
France



10 of the best International Turners from around the world showing their skills and passing on their experiences and knowledge, freely and with passion.



Willie Creighton
Ireland



Mary Ashton
UK



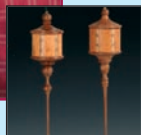
Richard Raffan
Australia



Sally Burnett
UK



Tim Yoder
USA



Lots of demonstrations in individual rooms with full audio/visual equipment so you don't miss a "cut".

We will have more one-slot presenters in addition to the ten headliners.

Lots more masterclasses.

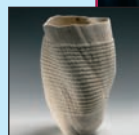
Refreshment breaks and lunch provided each day. Throughout the event we have trade stands to visit, a raffle and of course the instant gallery where we encourage everyone to bring up to 3 pieces of their best work to display.

Tickets are on sale with an **early bird discount**.
Details on the website awgbwoodturningseminar.co.uk

Keep an eye on the website and facebook for up to date information.



Yan Marot
France





AWGB International Seminar 9th to 11th October 2020

Booking Form

The accommodation comprises en-suite double rooms, including 59 twin rooms, and there are a number of accessible rooms. We are pleased to offer a range of attendance options. Please select the quantity required. If you have any particular needs or requests please note them below. (All costs include VAT)

Early Bird Discount applies if you pay 50% before 31 March 2018.

Package	Description	Cost	Early Bird Cost	Quantity	Total Cost
A	Full Weekend incl Accommodation and Meals	£445.00	£405.00		
AT	Full Weekend incl Accommodation and Meals with Twin room for Two People	£830.00	£780.00		
AD	Full Weekend incl Accommodation and Meals with Double room for Two People	£830.00	£780.00		
B	Full Weekend incl Lunches, No Accommodation or Evening Meals	£325.00	£305.00		
C	Friday incl Lunch, No Evening Meal	£95.00	£90.00		
D	Saturday incl Lunch, No Evening Meal	£140.00	£130.00		
E	Sunday incl Lunch	£115.00	£105.00		
F	Saturday incl Lunch & Evening Meal	£160.00	£150.00		
Total Cost					

Name (as you would like it on your badge)	
Address (inc Postcode)	
Email address	
Tel Number	
Membership Number (if applicable)	
Please advise any particular requirements (diet, access etc)	

Data Protection: The information you provide on this form will be used solely for dealing with you as a member of the AWGB; to inform you of AWGB news and to administer your attendance at AWGB events. By signing this form you are giving consent for the AWGB to use your data as described in our privacy policy which can be found at www.awgb.co.uk/privacy-policy. Your data will be used and stored in accordance with this policy.

Payment:

Early Bird: 50% deposit on booking before 31 March 2020, remainder due 4 weeks prior to the seminar

Non-Early Bird: 50% deposit on booking after 31 March 2020, remainder due 4 weeks prior to the seminar.

NB If you are unable to attend your deposit may be refunded at the discretion of the AWGB.

I have paid by cheque/bank transfer/international bank transfer (delete as appropriate). We are unable to take card payments by telephone. Card payments can be made on the website or by sending a payment through PayPal to awgbtrading@awgb.co.uk

Signed:

Date:

Payment by cheque payable to AWGB Trading Ltd, or

Bank transfer to sort code 09-01-28, Account number 41132390 (use family name/2020 as reference) or

From overseas IBAN: GB88ABBY09012841132390 (use family name/2020 as reference)

Please send this form (with cheque if appropriate) to: Stephen Evans 3 Teewell Hill, Staple Hill, Bristol BS16 5PA

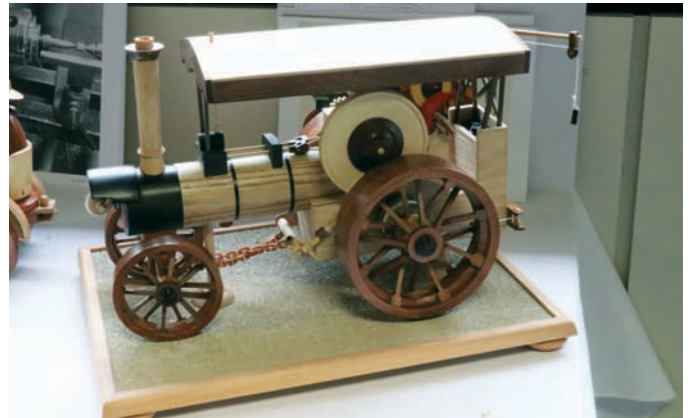
Tel: 07922 091586 Email: seminar@awgb.co.uk

Seminar 2020 Club competition – A Fairground ride

At the 2020 seminar, the theme for the Club Collaboration Competition involving a minimum of five club members is to produce a fairground ride. First prize for the winning team will be £250, second prize will be £150 and third prize will be £100.

1. The Collaboration Competition is open to both Affiliated and Associated Clubs and judging will take place at the 2020 International Seminar to be held at Yarnfield Training and Conference Centre.
2. Club teams must comprise a minimum of 5 Club members and each club may submit multiple entries but individuals may only be part of one team.
3. The theme for the competition is a fairground ride.
4. Electrically powered moving components or lights are permitted.
5. The maximum dimensions are 40cms long x 40cms wide x 60cms high.
6. The fairground ride must be made primarily from wood, which may be any variety. Small amounts of other materials for fixings or key components are permissible.
7. Preference in judging will be given to turning techniques as opposed to other disciplines such as carving or pyrography and the number of turned working/moving parts.

8. Clubs must submit a materials list with their entry, together with any supplementary plans or techniques that may assist the judges with their decision.
9. Judging is 'blind' and therefore any documentation should NOT contain information that will identify the club or individuals.
10. The AWGB competition co-ordinator WILL require a separate, full list of participants in the collaboration together with photographs of the participants and of the entry, during production.
11. Unless alternative arrangements are made with the AWGB, all entries must be delivered to Yarnfield Park by 4pm on Friday 9th of October 2020 and collected by 4pm on Sunday 11th of October 2020.
12. The judge's decision is final.



The winning entry from Cambridge for the 2018 Seminar competition for a tractor

Little Sister Big Performance

Little Sister is a mini hollowing tool based upon the highly successful Brother System 2 range. Designed with the small/mini lathe turner in mind.

Compact fixing screw
Hollow through 13mm
openings with ease!

Tapered Stem
for maximum rigidity

Proudly
Made in the UK

DVD
VIDEO
Free DVD
included

Talk with your
stockist today

hamlet
CRAFT TOOLS

sales@hamletcrafttools.com
www.hamletcrafttools.com
+44(0)1142321338

3 configurations available



An interchangeable scraper (ref HS137B) also available

Bib/Burn/Turn part 1

Robert Postlethwaite

Lots of people join woodturning clubs, buy woodturning magazines and on retirement start woodturning and then do very little, I wonder why is this. Is it lack of time, retirement can be a very busy time, I know this, or cost of wood or just fear of doing something wrong and wasting wood.

I will do a short series of notes showing how using little wood will help those new to woodturning. Club demos often show how to make complex items, this is the opposite.

Wood should not be a problem for these items, you can use any, and only small bits are needed. You can get these from garden prunings of fruit trees, shrubs etc, old furniture, or even skips or if allowed recycling centres. Friends and neighbours will often give you bits, or you can buy it. You will quickly have too much and native trees are often bright colours, eg Lilac, Yew, Laburnum.

I do not intend to write about tools, safety or finishes as each person has their own preferences except to say I like using a skew and finish with cellulose sealer and wax.

Light pulls



Blanks

Light pulls are best made using a hardish wood, the blanks can be very small, branch wood, best not fresh cut, or cut from bits to be about 20mm square and 50mm long, or any size you like. Drill the hole first, you will need a long series drill [about £1] about 4mm diameter for the hole, it can be drilled either with the lathe or a drilling machine, often the hole follows the grain do not worry. To make the counterbore for the cord knot I use an engineers centre drill [about £1] see pictures. The drive is simply a piece of brass or aluminium rod mounted in a drill chuck, if your drill chuck has too small a morse taper buy a morse taper adapter/sleeve [about £8]. Brass is used as you can cut into it with out blunting your tools, as you can see from the photos it does wear away as does the revolving centre.

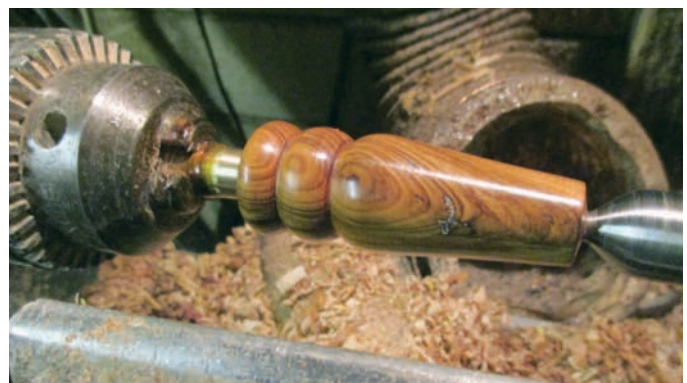
The photos show the set up and the design can be anything you want, no fine detail is needed as light pulls often strike walls etc. These allow you to improve your skills at no cost, as a beginner do not worry about sanding, I know practiced woodturner go straight to 180 grit, if yours are a bit rough start with 80 grit sometimes bad grain means this happens to the best of us.



Drills



Set up



Finished light pull on the lathe



Finished light pulls

Remember woodturning is fun and not to worry if it sometimes go wrong.

Reserve your place at:
www.woodturningweekender.co.uk

IT'S BACK!



W

**CHESTNUT
PRODUCTS**

oodturning Weekender.



The Orchards Event Venue,
New Road, East Malling, Kent

1-2 August
2020

*Four inspiring turners demonstrating
over two amazing days at probably the
friendliest woodturning event of the year!*

Tickets
available
from £20



For more information or to book, visit www.woodturningweekender.co.uk or call 01473 890118



Woodturning Weekender

CHESTNUT

P R O D U C T S



So much has happened since that it's hard to believe that the Woodturning Weekender was only a few months ago. But Chestnut Products' belated birthday bash, held at Spalding in August this year is still a popular topic of conversation everywhere.

The Weekender was always intended to be a fun, social event for woodturners and this was particularly evident during the Saturday evening barbecue and entertainment. The friendly atmosphere continued into the Sunday when the demonstrations started again.

First up on Sunday was Gary Lowe, the Tartan Turner, resplendent in his trademark kilt. Gary had probably travelled the furthest to get to the Weekender, coming from the north of Scotland - even further than the overseas guests! In a very well received demo Gary started off with one of his spinning top designs, which spins on a base but shouldn't fall off. Everyone watched with bated breath to see if it would stay - and of course it did! Gary also demonstrated his methods of texturing and colouring, and many of the audience said these demos have inspired them

to try colouring for themselves for the first time. Gary also provided extra information and help during the Q&A session after the demo and, like most of the demonstrators over the weekend, made himself available to answer questions and give short demos when not on the main stage.

After the lunch break it was the turn of Pat Carroll to charm the audience, and charm them he did. In a fast moving demo Pat showed many different aspects of turning and decorating items, explained why he doesn't dance (you needed to be there) and sent shavings flying in all directions. Pat turned and finished a bowl using various embellishment techniques including the use of an angle grider, colouring, creating indented patterns in the wood and much more.

The Woodturning Weekender was a huge success, so much so that by popular demand it will return in 2020. Next August sees the Weekender arrive at a venue near Maidstone in Kent, and will feature Emma Cook, Andrew Hall, David Lowe and Andy Rounthwaite. Plus other clinics and displays. See elsewhere in this magazine for more details or visit www.woodturningweekender for more information and tickets.

PowerPoint Quiz

Amateur Wood Turner John Hooper

This is the third Quiz I have presented at the Derwent Woodturning Club.

To present this Quiz I connected my Laptop to the venues ceiling mounted Projector via a HDMI cable and displayed it onto a large wall-mounted Projection Screen.

A selection of Wooden Blanks are awarded to the winner and second and third places.

Tiebreaker questions are used if there is a tie.

I got the idea from watching "Eggheads" on BBC 2, and the club chairman was looking for different ideas for club meetings instead of Demo's and Hands - On nights.

Acknowledgements for Images used.

Craft Supplies/Turners Retreat

Ashley Iles (Edge Tools) Ltd

Axminster Tools and Machinery

Charnwood

This is half of Johns Quiz - the second half will appear in the March issue of Revolutions - for the answers see page 31 - no cheating mind.

Turning Twisters



Lathes and Tools

2. What is the maximum diameter of a MT3 Drive Centre Morse Taper?

- a) 18mm
- b) 12mm
- c) 24mm

Categories

Lathes and Tools
Materials
Abrasives and Finishes
General Questions

Lathes and Tools

3. A 9mm Ashley Iles Round Bar Spindle Gouge is delivered with a ground bevel angle of:

- a) 35
- b) 45
- c) 60

Lathes and Tools

1. A live Tailstock Centre has a Morse Taper with a maximum diameter of 18mm. What size is the Morse Taper?

- a) 3MT
- b) 2MT
- c) 1MT

Lathes and Tools



4. The type of cutter fitted to this turning tool is:

- a) Captive Ring
- b) Mushroom
- c) Box Hollower

Lathes and Tools

5. The maximum speed of a modern Woodturning Lathe with a Variable Speed Controller is typically:

- a) 2500 rpm
- b) 3600 rpm
- c) 360 rev/sec



Abrasives and Finishes

1. Abranet 70x125mm Abrasive Sheets have a grit range:

- a) 120 to 600
- b) 80 to 400
- c) 80 to 600

Materials

1. This wood has a Specific Gravity of 0.61 when kiln dried at 12% moisture content:

- a) Satinwood
- b) European Cherry
- c) Snakewood

Abrasives and Finishes

2. Chestnut Acrylic Lacquer is a quick drying and a very hard wearing lacquer. Is it:

- a) Spirit based
- b) Water based
- c) Solvent based

Materials

2. Which wood is heaviest in weight?

- a) Indian Rosewood
- b) Holly
- c) African Blackwood

Abrasives and Finishes

3. Melamine Lacquer usually dries within 5 minutes. Once dry the lacquer chemically cures giving a tougher finish after:

- a) 7 days
- b) 4 days
- c) 2 days

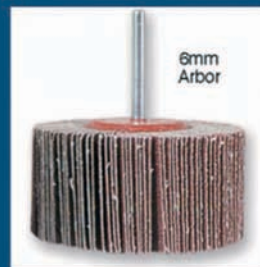
Materials



3. Which turning tool retains its cutting edge longer?

- a) Carbon Steel
- b) Titanium Nitride
- c) High Speed Steel

Abrasives and Finishes



4. Identify the item shown in this image.

Is it:

- a) Flap Wheel
- b) Drum Sander
- c) Sanding Disc

Materials

4. Which wood is darkest in colour?

- a) Native Lime
- b) Native Walnut
- c) Native Plain Sawn Oak

Abrasives and Finishes

5. Which of these Liberon Oils are Toy safe?

(i) Pure Tung, (ii) Finishing , (iii) Superior Danish.

- a) (i) and (ii)
- b) (ii) and (iii)
- c) (i), (ii) and (iii)

General Questions

1. The most suitable Lathe Speed for roughing down a 8 inch diameter spindle is:

- a) 3000 rpm
- b) 1500 rpm
- c) 500 rpm

General Questions

4. An Inverter allows the induction motor of a Woodturning Lathe to run continually and smoothly at variable speeds.

The main electronic devices inside the Inverter which control these changes in speed are:

- a) Wire Wound Resistors
- b) Thermistors
- c) Thyristors

General Questions

2. Which statement is incorrect about PU Gorilla Glue?

- a) Unaffected by extremes of heat
- b) 100% waterproof
- c) Affected by extremes of cold

General Questions

5. The item shown in this image is:

- a) Skew Jig
- b) Standard Gouge Jig
- c) Fingernail Profiler



General Questions



3. What type of wood is this bowl turned from?

- a) Sycamore
- b) Maple
- c) Pear

Note from the editor

I would love to receive all your ramblings and tales, stories and tips, jokes and yarns and anything else you would like to write for me (as long as its suitable for publication of course). Are you working on a project you can write about - how you are doing it. Don't forget to include photographs, illustrations and any supporting materials if applicable.

This is **your** newsletter and I need your contributions please.

We pay for your "How to" and "turning tips" articles.

Send to: editor@awgb.co.uk
or my address is on page 3

sheila

Put your answers here:

Lathes and Tools

- 1.
- 2.
- 3.
- 4.
- 5.

Materials

- 1.
- 2.
- 3.
- 4.
- 5.

Abrasives and Finishes

- 1.
- 2.
- 3.
- 4.
- 5.

General Questions

- 1.
- 2.
- 3.
- 4.
- 5.

Local Woodturning Club Supports Scout Jamboree

John Leach

Chairman - East Herts Woodturners

On behalf of the Association of Woodturners of Great Britain (the AWGB, which is the national woodturning organisation) the Sawbridgeworth based woodturning club (East Herts Woodturners) and the Cambridge based woodturning club (the Cambridge Woodturners), organised hands on woodturning for scouts and guides attending the week long Cambridge International Jamboree which was held at the Huntingdon Racecourse. Over 5 days, about 250 young people tried woodturning under the supervision of an experienced woodturner.

During the week, the activity was visited by the Master of the Worshipful Company of Turners (WCT-which is a London Livery Company). In addition, on one day the President of the AWGB supervised young people on a lathe and for 2.5 days the SE Rep of the AWGB demonstrated woodturning alongside, an experienced Cambridge club turner, who demonstrated woodturning for all 5 days. In addition there was a display of woodturnings.

After a short safety briefing, each young person had about ½ an hour on a lathe under the one to one supervision of a competent turner during which the young person made something out of wood.

The East Herts woodturning club which celebrated its 25 year birthday earlier this year, will, from the Autumn, be

running a youth section at which young people will be taught basic woodturning techniques. If you are a young person who wishes to join the group you should contact John on 01279 657901 or woodturningsurf@uwclub.net so that we have sufficient competent turners available, we need to confirm your place as there will be a limited number of spaces, Please do not just turn up.

Photo below shows: Bob Shepherd (a Cambridge Club member and member of the WCT). Andrew Sindall (Master of the WCT), John Leach (Chairman of the East Herts Club), Mike Rothwell (instigator of Woodturning for young people) and Dave Bubbins (organiser of Woodturning at Camjam) in the woodturning Marquee at Camjam 2019.



Photo Andrew Sindall

Stiles & Bates The Woodturning People

Shop

Free Mail Order Catalogue

Website

Upper Farm, Church Hill, Sutton, Dover, Kent. CT15 5DF

Tel: 01304 366 360

www.stilesandbates.co.uk
sales@stilesandbates.co.uk





Member Training Workshops

Dave Willcocks

Broxburn, West Lothian.

15th February 2020

Beginner

Back to Basics, Bowls & Beyond

Gary Rance

Wendover, Bucks.

28th February 2020

Advanced

Turn a box with Thread Chase

Les Thorne

Old Alresford, Hampshire

7th March 2020

Beginner

Spindle/Faceplate Techniques

Dave Willcocks

Broxburn, West Lothian.

28th March 2020

Intermediate (1-2 years' experience)
Hollow Forms (4-6 inch)

Andrew Hall

County Durham

9th May 2019

Intermediate
Small Helmet

Les Thorne

Old Alresford, Hampshire

16th May 2020

Advanced
Box Making

Andrew Hall

County Durham

13th June 2020

Intermediate
Small Hats

Gary Rance

Wendover, Bucks.

26th June 2020

Beginner
Spindle & Faceplate Techniques

If a workshop is oversubscribed, there will be a ballot for places.

To apply - visit the AWGB website: www.awgb.co.uk and download an application form and send to the coordinator shown on the form.

Or complete a 'Training Workshop Application' web form.

Only fully completed application forms will be considered.

Over 1000 Bowl Blanks



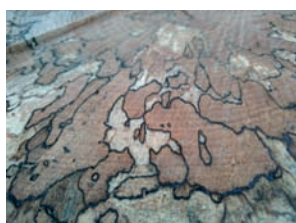
All beautifully figured
Blanks from 6"- 24"
Over 100 Burrs, some very large.



Over 2000 year old Yew, Spalted Birch, Spalted Beech, Red Beech, Spalted Ash, Cherry, Red Apple and Mulberry, Robinia (Burr), Black Walnut, Cedar, Chestnut, Oak, American White Oak, Oak Rubra, Wych Elm and Burr.



Prices from £5 upwards.



Phone Steve
07737 132214
Cheddar BS27 3JP



**Development
and Training**

Youth Training Programme

Date	Topic/Technique	Organiser	Venue
22nd February 2020	Various Projects and techniques Workshop Health & Safety	Les Thorne	Alresford, Hampshire SO24 9ND
22nd August 2020	Various Projects and techniques Workshop Health & Safety	Les Thorne	Alresford, Hampshire SO24 9ND

For application forms and information visit... www.awgb.co.uk

Or contact... Ron Caddy - 07903 313065

e-mail acorncrafts@tiscali.co.uk

AWGB Training Courses 2020

Have you ever thought of applying for one of the Training Courses, if not, why not!

They are offered to AWGB members at no charge and should you attend one and feel you benefited from the course and wish to make a contribution to AWGB funds after the course then that would be appreciated?

So have you ever wondered how we decide the content of the courses we offer? Well what we do, this is a Royal "WE" by the way as there are two of us, we review the courses offered in the previous year and the response received to each course by way of the number of applicants.

As the new training team on the job for the coming year, 2020, we naturally did the above first, plus we circulated all the club secretaries. We are afraid however that the feedback from them was very low. Now it is understandable in one respect in that they have to pass it to a committee for discussion before responding.

Now in 2019, there were 15 courses in total and in 2020 that is being increased to 25 one day courses together with 3 Master Class Sessions. We will come back to the subject of Master Classes later in the meantime we have moved forward and started to line up the courses for 2020 because most course instructors diaries are typically booked for 6 to 18 months ahead.

We would like to hear from you about what courses you would like to see and where in the country you would prefer them to be held. So please help us by

contacting either training@awgb.co.uk or development@awgb.co.uk preferably both of us and let us know the subject matter along with any suitable training venues. We are endeavouring to spread these courses geographically around Great Britain, hence our request for suitable training venues.

I had thought I had this article finished when the other half of the "WE" team sent me an article that Mike Darlow had written in Woodturning November 2019. Here he questions whether what we turn is "functional" or "non-functional" and his questions are valid and depending on your point of view it could alter what you believe the AWGB course content should be. So please let us know whether you want more on turning techniques or such subjects such as colouring, texturing, staining, pyrography or metal in-fill because the AWGB is here for you.

The Master Classes are of two day duration at a cost of £75.00 per attendee and will have 2 course instructors. The first of these is already fully booked and as a result, the executive has agreed that we add two more Master Classes to the training calendar in 2020.

Then there is the bi-annual International Woodturning Seminar in October, running from 9th thru until 11th. This is another form of training, well at least learning so keep that in your diary.

Please let us know your thoughts - the AWGB is YOUR organisation!



Member Training Workshops

Sue Harker

Snainton, N Yorks

11th July 2020

Intermediate
Art Deco Bud Vase

Gary Rance

Wendover, Bucks.

28th August 2020

Intermediate
Spindle & Faceplate – Candle from Patter

Sue Harker

Snainton, N Yorks

10th June 2020

Intermediate
Table Lamp (Long Hole Boring)

Mark Hancock

Pershore, Wilts

17th October 2020

Basic/Beginner
Log to Bowl

Mark Hancock

Pershore, Wilts

14th November 2020

Intermediate/Advanced
Hollow a Closed Form

If a workshop is oversubscribed, there will be a ballot for places.

To apply - visit the AWGB website: www.awgb.co.uk and download an application form and send to the coordinator shown on the form.

Or complete a 'Training Workshop Application' web form.

Only fully completed application forms will be considered.

Application for Membership / Renewal of Membership

I wish to apply for membership / renew my membership of the Association of Woodturners of Great Britain (AWGB). I understand that the AWGB is a company limited by guarantee, and if it is dissolved while I am a member or within 12 months after I cease to be a member, I will contribute such sum as may be demanded of me, up to £1 maximum, towards the costs of dissolution and the liabilities incurred by the Company while I was a member.

PLEASE USE BLOCK LETTERS

Membership Number (if already a Member)		Tick if you are applying for the first time
Title	First Name	Surname
Address		
		Postcode
Phone Number	Mobile Number	
AWGB Branch name (if applicable)		
Email (if applicable)		
Website (if applicable)		
Individual / Junior / Family / Overseas Membership. <i>(Delete as required.)</i>		
Junior Members please give your date of birth		
If you are applying for Family Membership please give the names of your family here		

The membership year runs from 1st January to 31st December. Half year membership is available from 1st July to 31st December at half the yearly subscription rate. Applications received after 1st October will last until 31st December in the following year, providing the full annual subscription has been paid.

Subscription rates UK members

Individual - **£18**

Family - **£28**

Junior - if under 22 on 1st Jan of membership year - **Free**

Subscription rates for overseas members Individual members - **£28 Sterling**

Data Protection

The information you provide on this form will be used solely for dealing with you as a member of the AWGB; to inform you of AWGB news and to administer your attendance at AWGB events. By signing this form you are giving consent for the AWGB to use your data as described in our privacy policy which can be found at www.awgb.co.uk/privacy-policy. Your data will be used and stored in accordance with this policy. If you are applying for a family membership, each member of your family over 18 must also sign below to give their consent. Members under 18 must also have their form signed by a parent/guardian.

Signed:	Date:
Additional family members/parent/guardian signatures:	

Payment Methods

Cheque payable to the AWGB.

Bank Transfer - please pay into our account as follows: Santander, Sort Code 09-01-28, Account Number 32277785
Please quote your membership number and name in the reference field.

From overseas: IBAN is GB75ABBY09012832277785

Standing Order - please contact your bank and arrange payment on 28th December of each year quoting your membership number and surname/family name as the reference.

Please indicate your method of payment: cheque / direct bank transfer / standing order
--

Gift Aid

Declaration – for past, present & future donations

Name of Charity: Association of Woodturners of Great Britain

Registered Charity 1150255

Through the Gift Aid scheme, we can reclaim the tax on your donation or membership subscription. For every pound that you give we can claim an extra 25p from the Inland Revenue. We will also be able to reclaim the tax on any future donations you make.

☐

Please tick the box if you would like the AWGB to benefit from gift aid on your membership fee / donations

I would like the AWGB to reclaim tax on any eligible donations or membership subscriptions that I have made in the last four years and in the future, until further notice. I confirm that I pay the amount of UK income tax or capital gains tax for each tax year (6 April to 5 April) that is at least equal to the amount of tax that all the charities or Community Amateur Sports Clubs (CASCs) that I donate to will reclaim on my gifts for that tax year. I understand that other taxes such as VAT and Council Tax do not qualify.

Please notify the AWGB Charity if you:

- ❖ *Want to cancel this declaration*
- ❖ *Change your name or home address*
- ❖ *No longer pay sufficient tax on your income and/or capital gains*

If you pay Income Tax at the higher or additional rate and want to receive the additional tax relief due to you, you must include all your Gift Aid donations on your Self Assessment tax return or ask HM Revenue and Customs to adjust your tax code.

Signed:

Date:

Make A Donation

If you would like to make a one-off donation to our charity, please see the website: www.awgb.co.uk/donations/.

Legacies

Perhaps you would also consider leaving a legacy to the AWGB when making a will.

Do you shop at Amazon?

If you do, you can use the smile.amazon.co.uk URL and choose us (Association of Woodturners of Great Britain) as your charity. We will receive a donation from Amazon every time you shop there using the **smile.amazon.co.uk** URL. It costs you nothing to do, just use the right URL!

Thank you for your support and considering a donation.

Please return to: John Peachey 37a Oxstalls Lane, Longlevens, Gloucester GL2 9HP
Tel: 01452 525976 email: membership@awgb.co.uk

giftaid it
making donations go further

AWGB Merchandise

Lapel Badges
Brass & enamel
£3.50 p&p included



Cloth Badges
For sewing on smocks etc.
£4.50 p&p included



Windscreen Sticker
£1 plus sae
(standard letter rate)



**All available from the AWGB
Membership Secretary
(details on page 3)
Make all payments to AWGB**

Renewal Reminder

If you havent renewed your membership this maybe the last edition of Revolutions you will receive.

If you are just renewing without changing your details or gift aid status, you don't need to complete the membership form again. All you need to do is send payment - either cheque with your membership number on the back; bank transfer with your surname and membership number as reference or you can renew via the AWGB website www.awgb.co.uk.

*Wishing you all a very
Merry Christmas and
Happy New Year
Best wishes from Sheila
Editor*

Answers to the Turning Twisters Quiz

Lathes and Tools

1. b
2. c
3. a
4. c
5. b

Materials

1. b
2. c
3. b
4. b
5. b,

Abrasives and Finishes

1. c
2. b
3. a
4. a
5. c

General Questions

1. c
2. c
3. b
4. c
5. c



forget about not doing the Christmas wrapping...



The ToolPost

Unit 7, Hawksworth, Southmead Ind. Park., Didcot, OX11 7HR
www.toolpost.co.uk | 01235 511101
The Original Aladdin's Cave | Sharing Expertise

www.toolpost.co.uk | 01235 511101

The Original Aladdin's Cave | Sharing Expertise