

Revolutions

THE NEWSLETTER OF THE ASSOCIATION OF WOODTURNERS OF GREAT BRITAIN

Issue No 124

March 2018



5-7 OCTOBER
2018
AWGB
INTERNATIONAL
WOODTURNING
SEMINAR
Your turn to be inspired



www.awgb.co.uk

A Company Limited by Guarantee - Company Number 8135399
Registered Charity Number 1150255

Corporate Members of the AWGB

Further information, including discounts, on the Corporate Members is available on the AWGB website.

Alan Calder Sandpapers Ltd.

Suppliers of high quality abrasives of many types at competitive prices.
Tel. 01538 387738
www.sandpapersupplies.co.uk

Ashley Iles (Edge Tools) Ltd

Woodturning and Carving tools traditionally made to a high specification.
Tel. 01790 763372 www.ashleyiles.co.uk

Axminster Tool and Machinery

Suppliers of quality woodturning products: courses from beginner level to advanced.
Tel: 0800 371822 Email: cs@axminster.co.uk
www.axminster.co.uk

Charnwood

Woodworking machinery, lathes, chucks and accessories. Next day delivery throughout UK mainland. Tel. 01530 516926.
www.charnwood.net

Chestnut Products

Quality Wood Finishes with emphasis on products for Woodturners. See Chestnut Finishing School videos on You Tube.
Tel. 01473 890118
www.chestnutproducts.co.uk

Classic Hand Tools

Quality Hand Tool, Lathes, Turning and Carving tools. Tel. 01473 784983
www.classichandtools.com

Crown Hand Tools

Crown offer the largest range of woodturning tools worldwide, combining the perfect mix of tradition and innovation finished to the finest exacting standards. Tel. 01142 612300
www.crownhandtool.ltd.uk

Ecolour Paints

Producing high quality finishes for over 30 years, using only natural raw materials for a healthier living environment - combining quality, ethics and ecology
Tel. 01452 772020 www.ecolourpaints.co.uk

English Hardwoods

Specialists in best quality, and unusual kiln dried hardwoods for all purposes
Tel. 07979 251497
www.english-hardwoods.com

Exotic Hardwoods

Specialist suppliers of all exotic hardwoods from all over the world. Tel. 01298 815338
www.exotichardwoodsukltd.com

G&S Timber

Suppliers of timber, tools, lathes and accessories. Tel 01768 891440
www.toolsandtimber.co.uk

Goulden Hardwoods

"Hampshire Wood Supplies" Suppliers of air dried British timber for small projects and Woodturners. Tel. 07891 592067
www.hampshirewoodsuppliers.co.uk

GPS Agencies Ltd.

Suppliers of alternate Ivory, Horn, Black Ebony and Acrylic. Also Pen blanks and larger turning stock. Tel. 01730 233366
www.gpsagencies.co.uk

Hampshire Sheen

Hand blended finishing waxes and atmospheric colour dyes. Tel. 01420 560077
www.hampshiresheen.com

Henry Taylor (Tools) Ltd

Woodturning, woodcarving and woodworking tools. Tel. 01142 340282
www.henrytaylortools.co.uk

Hope Woodturning

Designer and manufacturer of a range of quantity woodturning tools, Jigs and sanding systems. Tel. 01206 230694
www.hopewoodturning.co.uk

Lovell Workwear Ltd

Suppliers of protective smocks & aprons which can be personalised. Safety, Comfort, Style.
Tel 02920 598327 www.lovellworkwear.com

Max Carey Woodturning Trust

Registered Charity educating the public in woodturning. Courses available from beginner to advanced levels.
Tel 07976 420960
www.maxcareywoodturningtrust.org.uk

Mirka (UK) Ltd

Finishing products and tools including abrasive discs, strips and rolls, power tools and accessories. Tel. 01908 866100
www.mirka.co.uk

Olivers Woodturning

Woodturning tools, finishes, blanks. Woodturning club and forum.
Tel. 01233 613992
www.oliverswoodturning.co.uk

Robert Sorby Ltd

Tools, lathes and accessories.
Tel 0114 2250700 www.robert-sorby.co.uk

Snainton Woodworking Supplies

Everything for the Woodturner.
Tel. 01723 859545
www.snaintonwoodworking.com

Stiles & Bates

Comprehensive Woodturning Supplies since 1996. Tel. 01304 366360
www.stilesandbates.co.uk

T&J Tools

Abrasive and sharpening products.
Tel. 07973576554 www.t-jtool.co.uk

The Toolpost

The one stop resource for craftsmen and women around the world. Tel. 01235 511101
www.toolpost.co.uk

Turners Retreat

Complete range of woodturning tools and courses. Tel. 01302 744344
www.turners-retreat.co.uk

W.L. West & Sons Ltd

Timber, Machinery, Turning & Carving tools, accessories and books.
e mail - shop@wlwest.co.uk
Tel 01798 861611 www.wlwest.co.uk

Woodturning Magazine (GMC Group)

Best selling magazine for Woodturners. Supplies of books, DVDs and magazines.
Tel 01273 402871 www.thegmcgroup.com

Yandle & Sons Ltd.

Everything for the Woodturner.
Tel. 01935 822207 www.yandles.co.uk

**Don't forget to renew
your membership**

Membership/Renewal Form on page 29

DATA PROTECTION

Your personal details are held on computer for the use of the AWGB. We only use this information to run the organisation. If you would like to know what information we hold and how we use it, please contact the Secretary.

Revolutions

Copy deadline for the next
edition of Revolutions

5th May 2018

Front Cover

The lineup of demonstrators
at this years International
Woodturning Seminar
for more information - page 7

The AWGB is a Company Limited by Guarantee and a Registered Charity. It is administered by a group of elected Trustees who are also Directors of the Company. The Trustees meet at least twice each year and at the AGM. When they meet together they are known collectively as the "The Executive". Additionally, there are a number of people who assist the Trustees in their duties. These people are not elected and are known as "Volunteers".

TRUSTEES OF THE EXECUTIVE

President

Ray Key
The Firs, 53 Weston Road,
Bretforton, WR11 7HW

Chairman

Paul Hannaby
Windrush, High Street,
Drybrook, GL17 9ET
01594 544417
chairman@awgb.co.uk

Vice Chairman

Russell Gibbs
121 St George's Avenue
Daisy Hill, Bolton, BL5 2EZ
01942 811169
vicechair@awgb.co.uk

Secretary

Derek Puplett
Baldungan, Derby Lane, Shirley,
Ashbourne, Derbyshire DE6 3AT
01335 360388
secretary@awgb.co.uk

Treasurer

Jeff Belcher
Nant Ceiriog, Watery Lane,
Monmouth, NP25 5AT
07798 746296
treasurer@awgb.co.uk

Seminar Bookings

Mark Hogan
35 Berwick Way,
Barton Seagrave, Kettering
NN15 5XF
seminar@awgb.co.uk

Development & Training Officer

Peter Bradwick
183 Llantarnam Road,
Cwmbran, NP44 3BG
01633 873640
development@awgb.co.uk

Trade & Business Liaison Officer

Roger Cutler
14 St. John Street, Creetown
Dumfries & Galloway
DG8 7JF
01671 820832
trade@awgb.co.uk

Membership Secretary

Mike Wilson
Bryn Elis, Glanhwfa Road,
Llangefni, Anglesey LL77 7FA
07801446330
membership@awgb.co.uk

Webmaster & Data Manager

Paul Middleton
Roxton, Windmill Hill
Hutton, Somerset BS24 9UW
07894 744112
webmaster@awgb.co.uk

Newsletter Editor

Sheila Hughes
49 Essex Street,
Newbury, RG14 6QR
01635 45930
editor@awgb.co.uk

REGIONAL REPS

Scotland

David Willcocks
91a Easter Bankton
Livingston, EH54 9BE
07738 169561
scotrep@awgb.co.uk

North

Howard Hughes
Ty Newydd,
Padeswood Road North,
Buckley, CH7 2JN
01244 543566
northrep@awgb.co.uk

Midlands

Pat Murphy
72 South View Road, Carlton,
Nottingham NG4 3QL
07918 613762
midlandrep@awgb.co.uk

South East

Colin Smith
130 Broad Oak Way,
Stevenage, SG2 8RB
01438 727495
serep@awgb.co.uk

South West

John Montgomery
150 Cleeve Drive, Ivybridge,
Devon, PL21 9DD
01752 894083
swrep@awgb.co.uk

VOLUNTEERS

Youth Training Coordinator

Ron Caddy
Studio 9, The Fairground Craft
& Design Centre
Weyhill, Andover SP11 0QN
Tel: 07903 313065
Tel: 01264 350323
acorncrafts@tiscali.co.uk

Health and Safety Officer

John Boyne-Aitken
27 Rock Road, Trowbridge,
BA14 0BS
01225 752373
hs@awgb.co.uk

Chairman's Notes

Paul Hannaby

Changes to the Executive

We start 2018 with a few changes to the Executive. Sadly, Dave Atkinson and Sam Webber have resigned. Dave had increasing work commitments and something had to go. Sam was "persuaded" to extend his original stay to act as Vice Chairman to Dave and saw his opportunity to escape! I will miss their camaraderie and wise counsel at meetings and I'm sure you will agree, the AWGB wouldn't be where it is today without them and on behalf of the members, I would like to thank both Dave and Sam for all they have done over the years. The Trustees are entrusted with electing the four officers (Chairman, Vice Chairman, Secretary and Treasurer) from within the Trustees. I was elected as Chairman and Russell Gibbs has been elected as Vice Chairman. The roles Russell and I vacated were taken up by Roger Cutler (Trade and Business Liaison) and Paul Middleton (Webmaster and Data Manager). I would like to take this opportunity to welcome Paul and Roger to the Executive.

All the above wasn't exactly part of my plans so please bear with me while I find my feet! I'm looking forward to the challenges my new role will bring. I am confident we have a good team of Trustees and that between us we can build on the good work already done and play our part in the continuing evolution of the AWGB.

The year ahead

Our first step into 2018 included signing up for an online conferencing application which will allow us to communicate better as a group and for sub-committees or impromptu discussions. This could even be extended to conference calls with small groups of club officials etc. It won't fully replace our face to face meetings but it should reduce the amount of those we need and the travelling and time needed, not to mention the costs.

Volunteer needed

We are in need of a Training Co-ordinator, perhaps someone with some background in teaching/training. If there is anyone out there who can give a little of their free time to help in organising the training workshops, please contact me for further details.

AWGB International Woodturning Seminar

We are now in the Seminar year and preparations are gathering pace for the 16th International Woodturning Seminar at Yarnfield Park Conference Centre, Yarnfield Lane, Yarnfield ST15 0NL near Stone, Staffordshire. It's a new venue with everything close together and covered walkways between the accommodation blocks and the conference centre. All the meals are in the same building as the presentations and trade area. We have done our best to minimise costs without compromising on quality of the accommodation and we feel we have an inspirational line up of



presenters who have something to offer for turners from beginners to experts. Book before the end of March to keep a little extra spending money for all those tools and wood! You can book online on the Seminar website at www.awgbwoodturningseminar.co.uk or you can download a form to fill in and post, or use/copy the form on page 8.

New Club Collaboration Competition

We are launching a new competition for clubs, which is intended to encourage collaboration between several club members. The competition theme for this year is tractors and it will be judged at the Seminar. There are cash prizes for the winning clubs. The competition rules can be found on page 10 or this issue.

2018 AGM

Don't forget our AGM this year is being held at the SECB club venue, Little Yeldham Village Hall CO9 4LH on April 22nd. We are moving the AGM around the country each year to enable more members to attend

We posted the 2018 membership cards to all individual members in November last year with their copy of *Revolutions*. This appears to have been a success in reducing our administration and in saving postage costs, not to mention more members renewing early. We plan to adopt the same process at the end of 2018 for individual members. We will also be reviewing how we deliver cards to affiliated branch members. We will consult all branches before any decisions are taken to change the current process.

Revolution Archive

My last major task as webmaster (which I thought coincided nicely with the 30th anniversary year) was to scan the remaining sixty-odd issues of *Revolutions* covering the period from the founding of the association in 1987 to somewhere around 2003. Now the full archive is available on our website. While scanning the old newsletters, I found out that *Revolutions* was so named in the January 1990 issue and the AWGB logo appeared in October 1988!

New Affiliated Clubs

I would like to welcome Woodturners Association of Gwynedd and Inverclyde Woodturners as new affiliated branches. A great start to the new year! We are happy to welcome new clubs or if demand can be identified in an area where there isn't a club, we can offer support and guidance in setting one up.

Note

North London Woodturners

From January 2018, North London Woodturners [northlondonwoodturners.co.uk] have relocated to the **Arkley Village Hall, Brickfield Lane, Barnet, EN5 3LD**. 3rd Wednesday in the month

Demo by pro every other month.

New members welcome

Wilson Howie

James Pearson Strathclyde Woodturners

Just as I was about to send out our Newsletter, I received the sad news from Marjory Howie, that Wilson had passed away on 6th February.

Wilson was one of our Founder Members, one of the Founder Members of Scotswood, the predecessor of All Scottish Woodturning Clubs, and indeed a Founder Member of the AWGB.

As well as being an excellent woodturner, Wilson was one of the kindest and friendliest people one could wish to know.

He will be very sadly missed by everyone who knew him.



Association of Woodturners of Great Britain



Want a workshop in your area?

Let us know what you want and we shall arrange it.

There is scope for more workshops for 2018, therefore if you have a preference for any particular technique with a professional woodturner, or you know of a venue in your area that could host a Member Training Workshop contact Peter Bradwick and he will arrange a workshop to suit your requirements.

Workshops are a **'free member benefit'**, however candidates have a no obligation option to make a donation to the Development Fund.

**Please contact Peter Bradwick
e-mail development@awgb.co.uk
Tel: 01633 873640**

Notice is given that the
ANNUAL GENERAL MEETING
of the



ASSOCIATION OF WOODTURNERS OF GREAT BRITAIN

(A Company limited by Guarantee - Company No. 8135399)

will be held at

Little Yeldham Village Hall, School Road, Little Yeldham, CO9 4LH

Sunday 22nd April 2018, starting at 1pm.

With regard to Director/Trustee positions on the Executive:

Paul Hannaby, Russell Gibbs, Derek Puplett, Peter Bradwick, Dave Wilcox, John Montgomery, Pat Murphy, Howard Hughes, Mike Wilson and Mark Hogan have been co-opted during the year and will be re-elected formally at the AGM.

Under Section 234 of the Companies Act 2006 and the Articles, a member is entitled to appoint another person as their Proxy to exercise all or any of their rights to attend, speak or vote at the meeting. The appointment of a Proxy must be in writing and notified to the Secretary, before the meeting.

A Corporate Member may nominate a person to attend on their behalf in writing to the Secretary, before the meeting.

As usual, there will be tables on which to exhibit attendee's work which they are happy to submit for judgement and submission for the Travelling Exhibition coupled with the award of the Chairman's Prize. There will also be tables on which to place tools and the like for sale. Nigel Fleckney will be in attendance with a selection of his fine timbers for sale.

The AGM will be preceded by a meeting of Members and Branch Representatives, which will start at 11.00am and will be chaired by Paul Hannaby.

If you are attending, please inform the Secretary on secretary@awgb.co.uk or 01335 360388 by 8th April.

ANNUAL GENERAL MEETING
of the
**ASSOCIATION OF WOODTURNERS
OF GREAT BRITAIN**

(A Company limited by Guarantee -
Company No. 8135399)

**Sunday 22nd April 2018,
starting at 1pm.**

Agenda

Apologies for Absence

Acceptance of the Minutes of the 2017 AGM

Matters Arising from the minutes of the 2017 AGM

Treasurer's Report for year ending 31st December 2017

Chairman's Report

Announcement of the ballot for Trustees

Vote on the appointment of Accountants/Auditors for the AWGB

Result on ballot of any resolutions

Southwest Representative Report

John Montgomery

Not a lot has happened in the region since the last issue of Revolutions. I have visited a couple of the local clubs to me and spent time putting together a diary of events for this year.

I have kept branches up-to-date with newsletters and also the associate clubs that I have on my list in the region.

The shows I will be attending this year with the AWGB exhibition are Yandles in Martock, Somerset on the 13th & 14th April. Yandles again on the 7th & 8th September. It will then be the AWGB International Seminar at Yarnfield over the weekend of the 5th, 6th & 7th October. I will then be travelling back with a new set of exhibitions pieces to take to RHS Rosemoor at Torrington, North Devon over the weekend of the 12th, 13th & 14th October followed by the Woodworking & Power Tool Show at Westpoint Arena, Exeter on the 26th & 27th October, we will also be demonstrating at both of these shows.

I aim to visit some more clubs in the region that I have not visited over the last couple of years, although this is dependent on the distance to travel and the day of week they meet. Most of the clubs I do visit tend to be all day events that are normally over a weekend or bank holiday.

If you visit a show we are attending please do come up and introduce yourselves so that we can better serve your needs.

West Sussex Woodturners

The West Sussex Woodturners showed their continued



Photo: Keith Greenfield

The West Sussex Woodturners with Jennifer Murrell from St Barnabas House From left to right: Barry Chitty, Ron Inglis, Jennifer Murrell, Andy Heath, Colin Smith, Ian Rudge, Barry Fitch, Iain Kallend, Scot Grant, Chris Buque, Jim Harris

support for St Barnabas House hospice on Sunday when they presented them with a variety of hand turned wooden items for them to sell in their shops and Christmas fairs.

The group made the decision to appoint St Barnabas House as their chosen charity this Christmas, after a recommendation from one of their longstanding members, Rob Inglis, who has supported them for many years. Each person was asked to turn an item to be donated to St Barnabas House, and the club had an amazing response with over 90 hand turned wooden items being given.

Talking about his involvement, Rob Inglis said "I started to support St Barnabas House after the loss of my eldest son aged 38 and have regularly made items to help them raise essential funds over the past 9 years. The first thing I made for them was a pirate's chest so that the names of patients from their old building could come with them to their new premises and this is now buried in their chapel. This charity does so much amazing work for patients and their families and I could not be prouder that the West Sussex Woodturners

have appointed it as their chosen charity."

The West Sussex Woodturners meet on the first Sunday of each month and the 100 strong members which include men, women and children from all across Sussex supported the call to action by producing, the items in their individual workshops. Working in Preston to Angmering, Horsham, Slinfold, Coolham, Smallfield Worthing, Yapton and Durrington, to name but a few, a wide range of items were created, using many different techniques.

A beautiful array of bowls, pens, candlesticks, platters, wooden fruit, light pulls, a solitaire set and a child's stool were just some of the items given. All made from a selection of different woods, and finished with natural wax, dyes and specialist paint finishes, many members were keen to donate some of their finest work.

Jennifer Murrell who attended the event on behalf of St Barnabas House said "I was not sure exactly what woodturning was when I was first approached to receive these gifts and was keen to see what we were being given. The time and effort that has gone into producing this wonderful array of items is amazing and we will be taking them with us to sell at the Christmas events. To have something hand made by local people that will benefit a local charity is special and the funds raised from their sale will be a huge help."

Speaking for the club, Ian Rudge the Chairman, said "Our members share a passion for woodturning and frequently work behind the scenes to provide support and assistance to a variety of community projects. We thought Christmas would be a time when something special and handmade would make more of a difference, and this is the first time that the club has worked together as a whole to support a local charity. After this amazing success, I am sure we will be doing again!"

If you would like to find out more about the West Sussex Woodturners, please have a look at the website <http://www.westsussexwoodturners.co.uk> or contact Ian Rudge on wswtchairman@hotmail.com.

**The Forest of Bere Woodturners Association
are having an Open Day
on Saturday the 14th of April
from 10am to 4pm
as part of the clubs 25th Anniversary celebrations**



There will be demonstrations, competition pieces and members on hand to answer guests' questions.

Held at the club headquarters - St. John Ambulance headquarters in Fraser Road, Bedhampton, PO9 3EJ

Web site is www.forestofberewoodturners.com we meet on the third Wednesday of the month at 7.15pm, we also run a Saturday club once a month where tuition, advice and a warm welcome are available for all levels of turner.

Please see the web site for full directions to the venue.

AWGB International Woodturning Seminar



5th to 7th October 2018
Yarnfield Park Training and Conference Centre

Stone Staffordshire ST15 0NL - where you will never have to walk more than 75 metres – always under cover - for anything.

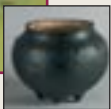
5-7 OCTOBER
2018
AWGB
 INTERNATIONAL
 WOODTURNING
 SEMINAR
Your turn to be inspired



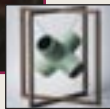
10 of the best International Turners from around the world showing their skills and passing on their experiences and knowledge, freely and with passion.



Mike Hosaluk
Canada



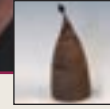
Max Brosi
Ireland



Asmund Vignes
Norway



Les Thorne
UK



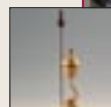
Harvey Meyer
North America



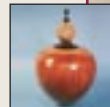
Glenn Lucas
Ireland



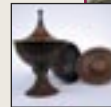
Benoit Averly
France



Jean-Francois Escoulen
France



Gary Rance
UK



Rod Page
UK

Lots of demonstrations – you choose who you want to see, these are in individual rooms with full audio/visual equipment so you don't miss a "cut". New for this seminar - masterclasses. Refreshment breaks and lunch provided through the weekend. Saturday evening, an informal dinner and the auction of donated pieces to raise funds for AWGB development. Throughout the event we have trade stands to visit, a raffle and of course the instant gallery where we encourage everyone to bring up to 3 pieces of their best work to display.

This event is so much more than just a show with a few trade stands and people turning. This is an all encompassing woodturning weekend – no matter your skill level – if you're thinking of starting turning, a beginner, novice or a skilled turner – there are always things to learn and skills to see.

You don't have to be a member of the AWGB, there are various options if you can't make the whole weekend. Come for just a day – the choice is yours.

Full weekend	£435.00	£395.00
Full weekend no accommodation or evening meals	£315.00	£295.00
Full weekend incl accommodation and meals with twin room for two people	£810.00	£730.00
Full weekend incl accommodation and meals with double room for two people	£810.00	£730.00
Friday attendance & lunch only no dinner	£90.00	£85.00
Saturday attendance & lunch only no dinner	£135.00	£125.00
Sunday attendance & lunch only no dinner	£90.00	£85.00
Saturday including dinner (no overnight)	£160.00	£150.00

Price	Early Bird*
£435.00	£395.00
£315.00	£295.00
£810.00	£730.00
£810.00	£730.00
£90.00	£85.00
£135.00	£125.00
£90.00	£85.00
£160.00	£150.00

Keep an eye on the website and facebook for up to date information or contact Mark Hogan for Seminar booking enquiries 07907 180 806

www.awgbwoodturningseminar.co.uk



* 50% deposit paid before 31st March 2018



AWGB International Seminar 5th to 7th October 2018

Booking Form

The accommodation comprises en-suite double rooms, including 59 twin rooms, and there are a number of accessible rooms. We are pleased to offer a range of attendance options. Please select the quantity required. If you have any particular needs or requests please note them below. *(All costs include VAT)*

Early Bird Discount applies if you pay 50% before 31 March 2018.

Package	Description	Cost	Early Bird Cost	Quantity	Total Cost
A	Full Weekend incl Accommodation and Meals	£435.00	£395.00		
AT	Full Weekend incl Accommodation and Meals with Twin room for Two People	£810.00	£730.00		
AD	Full Weekend incl Accommodation and Meals with Double room for Two People	£810.00	£730.00		
B	Full Weekend incl Lunches, No Accommodation or Evening Meals	£315.00	£295.00		
C	Friday incl Lunch, No Evening Meal	£90.00	£85.00		
D	Saturday incl Lunch, No Evening Meal	£135.00	£125.00		
E	Sunday incl Lunch	£90.00	£85.00		
F	Saturday incl Lunch & Evening Meal	£160.00	£150.00		
Total Cost					

Name (as you would like it on your badge)	
Address (inc Postcode)	
Email address	
Tel Number	
Membership Number (if applicable)	
May we print your address and email in the delegate pack (delete as appropriate)	Yes/No
Please advise any particular requirements (diet, access etc)	

Payment:

Early Bird: 50% deposit on booking before 31 March 2018, remainder due 4 weeks prior to the seminar

Non-Early Bird: 10% deposit on booking, remainder due 4 weeks prior to the seminar.

NB If you are unable to attend your deposit may be refunded at the discretion of the AWGB.

I have paid by cheque/bank transfer/international bank transfer (delete as appropriate). We are unable to take card payments by telephone. Card payments can be made on the website by PayPal or by sending a payment in PayPal to awgbtrading@awgb.co.uk

Signed:

Date:

Payment by cheque payable to **AWGB Trading Ltd**, or

Bank transfer to sort code 09-01-28, Account number 41132390 (use family name/2018 as reference) or

From overseas IBAN: GB75ABBY09012841132390 (use family name/2018 as reference)

Please send this form (with cheque if appropriate) to:

Mark Hogan, 35, Berwick Way, Kettering, NN15 5XF
Tel: 07907 180806 Email: seminar@awgb.co.uk

Herefordshire Woodturners

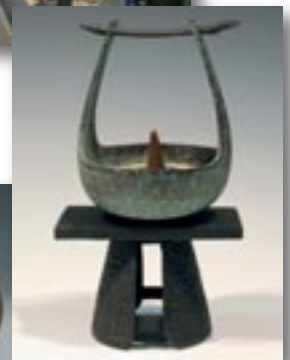
are having an all day
woodturning event featuring

Mark Sanger

professional woodturner

on the **7th April 2018 - 10.00am**

at Holmer Scout Hut
Highmore Street
Hereford HR4 9PG



Refreshments available all day

A display of members work will be available to view

Admission £10 advance tickets available and preferred
as numbers limited

Contact Mike Glover 01432 378205
michaelglover52@sky.com

Little Sister Big Performance

Little Sister is a mini hollowing
tool based upon the highly
successful Brother System 2 range
Designed with the small/mini lathe
turner in mind.

Compact fixing screw
Hollow through 13mm
openings with ease!



Proudly
Made in the UK

DVD
VIDEO
Free DVD
included

Talk with your
stockist today

hamlet
CRAFT TOOLS

sales@hamletcrafttools.com

www.hamletcrafttools.com

+44(0)1142321338

3 configurations available



An interchangeable scraper (ref H5187B) also available

Seminar Notices

Club Collaboration Competition



At this year's Seminar, the AWGB is introducing a Club Collaboration Competition involving a minimum of five club members to produce a wooden tractor. First prize for the winning team will be £250, second prize will be £150 and third prize will be £100.

1. The Collaboration Competition is open to both Affiliated and Associate Clubs and judging will take place at the 2018 International Seminar, to be held at Yarnfield Training and Conference Centre from 5th to 7th October 2018.
2. Club teams should comprise of a minimum of 5 Club members and each club may submit one entry.
3. The theme for the competition is a Tractor and judging emphasis will be on as many working/moving parts as possible. Battery powered, moving components are NOT permitted.
4. The maximum dimensions are 40cms long x 30cms wide x 25cms high
5. The tractor must be made solely from wood, which may be any variety.
6. Preference in judging will be given to turning techniques as opposed to other disciplines such as carving or pyrography.
7. Clubs must submit a materials list with their entry, together with any supplementary plans or techniques that may assist the judges with their decision.
8. Judging is 'blind' and therefore any documentation should NOT contain information that will identify the club or individuals.
9. However, the AWGB competition co-ordinator WILL require a separate, full list of participants in the collaboration, together with photographs of the participants and of the entry, during production.
10. The judge's decision is final.



This wonderful model tractor and trailer was made in 2010. It was a collaborative effort by a large number of club members, who each produced at least one of the many parts involved. The East Surrey Woodturners presented this model tractor to the Royal Marsden Hospital on 10th January 2011, to be used to raise money for the hospital. The tractor is about 40cm long and is comprised of about 100 separate turned pieces using 8 different types of timber (and some string!).

Seminar Scholarships

The AWGB set aside funds to support a number of scholarships to the Seminar. Seminar scholarships are open to any member who would otherwise be unable to attend. Applicants must be AWGB members. You can either apply on our website (www.awgb.co.uk/seminar-scholarship-application) or by using the paper form included in this issue of Revolutions opposite.

We assess your application on a number of criteria for example, you may be starting woodturning and want to use it as an opportunity to advance your skills, or perhaps you are thinking of woodturning as a possible career. We also consider your financial status as the scholarship is also designed to help those who would like to attend but may be financially constrained. Any information provided on the form is kept confidentially.

Please provide as much information as possible to help us make our decision. The closing date is 1st June 2018.

The scholarship covers the full cost of the weekend. It is not transferable and we do not make any contribution towards any other associated expenses such as travel.

**Woodart Products**

Magnetic LED Lights

Pyrography units – Razertip, Scorpion and Dragon

Pyrography Accessories – Tips, Fume Extractors, etc..

Micro-Drills – 35000rpm and 45000rpm units fitted with 1/8" (3.175mm) collet chuck

Cutters and Burrs for Micro-drills (and other rotary tools)

SUPERIOR POWER CARVING TOOLS

www.woodart-products.co.uk
john@woodart-products.co.uk
Tel.: +44 (0)7770 226640



Company Registered Number : 8135399.
Registered Office : 36 Crown Rise, Watford, WD25 0NE.
Registered Charity : 1150255.
www.awgb.co.uk

Application for Seminar Scholarship – 5th – 7th October 2018

(AWGB Members Only)

Name	
Address	
Telephone No	
Email address	
AWGB membership No	
Date of Birth (If under 21)	
Branch/Club (if applicable)	

Use the box below to tell us why you want a scholarship and how you think it be of benefit to you. You should also give an indication of your financial status (any information given in this regard will be kept confidential).

The closing date for applications is 1 June 2018.

After this date the Trustees will review the applications and award a number of scholarships. The Trustees' decision is final.

--

Signed:

Date:

Please return the application form to Peter Bradwick at development@awgb.co.uk

Or telephone 01633 873640 for postal address



Largest wood turning competitions in Europe launched

2 February 2018

The Worshipful Company of Turners announces the launch of its 2018 Competitions, which will take place on Monday 26 November.

The following day (Tuesday 27 November) all entries and winners will be displayed and many will be for sale at a free public exhibition at Carpenters' Hall in the City of London.

The competitions are the largest in Europe and attract a wide range of entries from amateur and professional woodturners of all ages from across the UK and other countries.

In total there are over a dozen competitions, which are organised by the Turners' Company with the Association of Woodturners of Great Britain, Society of Ornamental Turners and the Association of Pole Lathe Turners and Greenwood Workers.

Open Competition: 100th anniversary of the Armistice

This year's special Open Competition of the Turners' Company marks the 100th anniversary of the Armistice. Woodturners are asked to create works which reflect their personal style, techniques and response to the 1918 Armistice and the 100th anniversary on 11 November.

The Turners' Company competitions are held every two years. The theme of the 2016 Open Competition was the Great Fire of London and it attracted a record number of entries.

Exhibition: View, Love, Buy

At the public exhibition on Tuesday 27 November, all the competition entries and winners will be on show along with a curated display of works by members of the Register of Professional Turners. Many of these works will be for sale during the exhibition day and members of the public will be encouraged to 'View, Love and Buy'.

Competition rules

Entry forms and more information about each of the competitions will be provided through the Turners' Company website at: www.turnersco.com/turning-competitions-2018. The deadline for entry forms to be received by the Clerk of the Turners' Company is Wednesday 14 November. All entries must be at Carpenters' Hall by Noon on Monday 26 November.

Issued by The Worshipful Company of Turners, Skinners' Hall, 8 Dowgate Hill, London EC2R 2SP

Tel: 020 7236 3605 clerk@turnersco.com www.turnersco.com

Waveney Woodturners Training Days

7th Oct 2017 & 20th Jan 2018

David Ritchie

Both training days were sponsored by the AWGB, led by Paul Howard and because the 'lidded box' was such a success in October it was chosen again in January. The objective was to turn the lidded box in Ash and Beech (Jan.) with rings and inlay from Oak and Thuya Burr.



The Lidded Box completed

The challenge involved a number of disciplines and was designed to give the opportunity for individual imagination whilst requiring accuracy of cut and the ability to read and reproduce to the specification whilst maintaining good tool control in a safe manner.

The students, 10 local who had been through the clubs training course and 2 from further afield (Cambridgeshire and Lincolnshire) had all received drawings in advance but there were still some trepidation when they realised what was expected of them.

Over the first of many cups of coffee Paul went through the health and safety aspects ensuring all had the correct equipment, fortunately the club was able to cover any short falls and by 09.30 we were ready to begin.

Throughout each day with varying skill levels across the group the 'oh dear' cuts were kept to a minimum and with the clubs committee on hand to encourage progress with a certain degree of caution, a happy atmosphere and lively banter was enjoyed by all.

Paul led the classes in his normal professional manner splitting the day into 3 sections, demonstrating each stage showing what was required and what tools to use, waiting for all students to finish before progressing to the next. All 12 trainees completed the task and were delighted with the results. Comments like "I'll make another one of these" and "that's a better way to do it", was proof of their satisfaction and enjoyment throughout the day, which was punctuated by tea breaks and a buffet lunch.

The club thanks Paul Howard for his patience and performance which was excellent, and the AWGB for its sponsorship without their help it would not have happened.

For further club information see
www.waveneywoodturners.co.uk



October 7th 2017

Andrew, Harry, Paul (Instructor), John (helper), Luke, Peter, David, Andrew, David Ritchie (Events.Sec.).



January 20th 2018

Chris (Cambridgeshire), Robin, Paul (Instructor) Alan, Ray, Nick, Bob (Lincolnshire)

**Pepper Mills
Nutmeg Graters
Tools etc.**

**Sole distributor of
Cole & Mason
mechanisms and parts.
UK craft agent for
CrushGrind**

**Constable Woodcrafts
Tel/Fax 01206 299400
e-mail: brianfitzs@aol.com
www.peppergrinders.co.uk**

Border Woodturners Open Day Inter-Club Competition

Dave Atkinson

I was honoured to be asked to judge the inter-club competition at the Border Woodturners' Open Day and just a little over-awed at the prospect. I did think "I shall make at least one friend though!" Although I have visited the club to demonstrate I had never been to the open day and didn't know what to expect apart from a friendly welcome. When the day came the weather was kind and having said hello to my many friends and acquaintances up there David treated me to a bacon roll and a cuppa, which are always welcome.

He explained the judging process – everyone is asked to leave the hall and I remain with Ian Forster and Brian Conchie (who are there to answer any questions, but don't take part in the judging) and then I had a good look at the entries. Everything was made to a very high standard with some exceptional pieces in each club's display. After some time I had managed to establish 1, 2 and 3 and then had to look carefully to decide in their order. I made my decision not only on the quality of the turning but also the originality of the pieces and my own personal preferences.



Dave Atkinson presenting Nick Simpson (Northumbrian Secretary) with the winners trophy.

Everyone who took part in the day should be congratulated. It was a day full of friendliness and banter, a chance to meet old friends and make new ones. Whoever judges next year will have a more difficult task as I'm told the standard improves every year.



1st Prize - Northumbrian Woodturners



2nd Prize - Eden Valley Woodturners



3rd Prize - Cumbria Woodturners

The Woodcraft Association

David Bebbington

The Woodcraft Association, which meet in the Community Centre on Level Road, Hawarden, CH5 3JR North Wales will be hosting a **Morning's Woodturning demonstration** given by **Stuart Thomas** from Mold, and paid for from our AWGB grant.

Stuart will start at 9 a.m. on **Monday April 16th 2018**. What we would like is for any woodturners who live close enough and are interested enough, to join us for the morning. We would ask guests for £5 towards club funds, in exchange for which we will supply a great welcome, good company, tea, coffee and biscuits - and if we win the charm offensive, possibly cake.

<http://www.woodcraftassociation.org.uk/>

Try something new with Golden Artist Colours

GOLDEN

ARTIST COLORS

Professional Acrylic Colours 6 Pack £38.35
Professional Liquid Acrylic 6 Pack £38.95
Gels and Paste 6 Pack £29.94
High Flow Acrylic 10 Pack £59.95
Crackle Paste £18.60
Colour Wheel £9.54
Interference Acrylic 30ml Fluid from £9.25
Interference Acrylic 60ml Heavy Body £16.50
Iridescent Acrylic 30ml Fluid from £7.75
Iridescent Acrylic 60ml Heavy Body from £8.50



Robert Sorby

ProEdge
Easy and quick
sharpening system

Versatile with a wide
range of accessories



Basic £269.94
Deluxe £335.94

Glass Tea Light Holders



It took some searching but
we were able to locate new
stocks of these 49mm x 24mm
Glass Tea Light Holders

60p per Glass Holder
£6.00 for a tray of 12
£50.00 for 10 trays of 12

Olivers
Woodturning

30th June & 1st July

The Woodturning Family Party
Tickets on sale!
Visit www.ukiws.co.uk
See you there.

UKIWs

UK & Ireland

Woodturning Symposium

The Hilton Hotel,
Coventry
20
18

Sheffield Woodturning Club

Lesley Churton

Taking inspiration from other clubs highlighted in *Revolutions*, the Sheffield Woodturning Club members have been turning wig stands for their local cancer centre, Weston Park Hospital, where about 1,000 patients a year lose their hair during treatment. Lesley Churton, the Club Secretary, presented half the stands already turned to Chris Firth and Gemma Noon who both work at the hospital. The ladies have good ideas – some stands will be gifted and some sold to raise funds for the Weston Park Cancer Charity. More will be collected from the Club at the end of February, when Chris and Gemma will attend to thank the members and tell them about the work done by the hospital.

Lesley praised the members and said they always come up trumps, especially when given such a worthwhile cause to support.



**Association of
Woodturners**
of Great Britain



Member Training

Tutor Assessment Day
Saturday 23rd June 2018

Max Carey Woodturning Trust
The Mill, 35 High Street
Portishead, Bristol, BS20 6AA

Applications to John Montgomery
AWGB Demonstrator Training &
Tutor Assessment Coordinator
Email johnmontgomery@awgb.co.uk



CHESTNUT
P R O D U C T S
FINISHING SCHOOL

Using WoodWax 22.

1



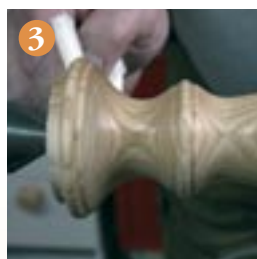
1 WoodWax 22 is a special mix of natural beeswax and carnuaba wax blended to create a quick drying, easy to use wax. It's simple to get great results and it's a great starting point for a new turner.

2



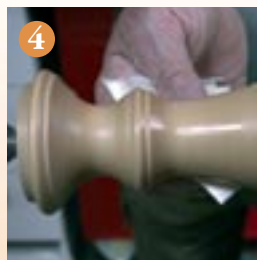
2 WoodWax 22 can be used on bare wood but a better looking and longer lasting shine will be achieved when used over any of the Chestnut Products sanding sealers. It is usually applied by cloth (although a brush can be used on larger areas). Safety Cloth is ideal for this as the texture helps spread the wax over the surface.

3



3 As you apply the wax it spreads very easily at first; after about 30 seconds the cloth starts to pull on the wood; this means the wax is ready to buff, there's no need to wait!

4



4 Start the lathe and using a firm pressure polish the wax to a shine. Buffing straight away will remove any surplus wax to give an even, high gloss finish.

5



5 WoodWax 22 is ideal for most projects for a quick and easy finish. It is safe to use on toys and nursery furniture and will resist moderate handling without damage but isn't recommended for items that will come into regular contact with water.

*More information available from your
local stockists or contact us at:*

PO Box 260, Stowmarket, IP14 9BX

Tel: 01473 890118



mailroom@chestnutproducts.co.uk
www.chestnutproducts.co.uk

Saint Columba's After School Club – Inverclyde Scotland

Alex Francis

In the December issue of Revolutions, I reported that at our first meeting we had 9 members with more to come. We now have about 20 members, all very keen to learn, not only woodturning, but other aspects of craft with wood.

All the pupils involved have had some time on a lathe, learning how to safely use the tools and have created simple



beads and coves and are now ready to move on to turn something useful.

Having 5 lathes we have decided it would be better to allow the pupils a block of 4 weeks at least on a lathe while the remainder of the club members work at some other aspect of wood working.

So that the pupils could have something which they can use, we decided to make simple desk pens using the inside of cheap biros. They turned a square pen blank round then drilled a 4mm hole using a long 4mm drill. They then shaped the pen and glued the nib into the drilled hole. This simple exercise gave them great pleasure and something to show for their effort.



NEWS

editorial@greenocktelegraph.co.uk www.greenocktelegraph.co.uk

editorial@greenocktelegraph.co.uk www.greenocktelegraph.co.uk

NEWS

Westminster message...

By Ronnie Cowan MP

Too little, too late

A St any politician who they got into politics and the answer will be that they wanted to serve their community and to make a difference. In May 2015 I was elected alongside 55 other SNP colleagues. For two years we laboured, upheld, encouraged and when necessary demanded that Police Scotland and the Scottish Fire and Rescue Service were exempt from VAT. All our approaches were dismissed off hand. The situation arose because the various forces in Scotland were merged into one police force and one fire service. A legal anomaly meant that as a result of this change, they became liable to pay VAT. There was a reasonable assumption that the UK Government would do the decent thing and remove the VAT liability. They refused, meaning Scotland's police and fire services were the only such bodies in the UK being forced to pay VAT. The SNP made 140 separate approaches to the Conservative government regarding this issue. They have only now decided to overturn the tax liability because they can use it as a political point scoring exercise.

I am delighted that they have finally seen sense and will remove the VAT obligation but they have shamed themselves by claiming that the change occurred because of the 13 newly elected Scottish Conservative MPs. By taking this stance Philip Hammond is not serving the communities of Scotland, he is simply serving the Conservative Party. This decision could and should have been made three years ago but it wasn't politically expedient and as a result Police Scotland and the Scottish Fire Service have been wrongly discriminated against – to the cost of £140 million.

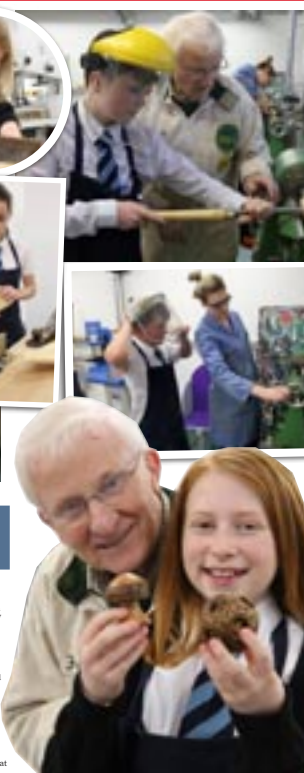


CREATIVE pupils at a Gourcock school are becoming things 'turning over' as they learn a new craft skill. Talented teenagers at St Columba's High are learning new tricks from Alex Francis—who is a member of the The Association of Woodturners of Great Britain. Alex, whose granddaughter Olivia, pictured right with him, attends the school's wood turning and craft club, says he loves sharing his skills with the youngsters. The retired electrician said: "It's a great thing to be able to pass on a skill that children don't get the chance to pick up. "It's a terrific skill to have. "Like anything where you're using your hands, it's very therapeutic and it gets them to think about design. "Olivia, 12, said: "So far I've made a box, candle holder, a bird and a pumpkin. "My grandad is amazing at wood turning. "He goes to craft fairs and I love to see what

By Rosemary Lowrie

he's made." Fellow pupil Matthew McGill says he's enjoyed getting to grips with woodturning and is picking it up fast. He said: "I only started last week but I had the chance to use the lathe and made a wooden cylinder. Design and technology teacher Ashley Quinn says the wood turning and craft club at St Columba's is proving very popular. She said: "Alex makes the most beautiful things, so we were delighted when he approached us. "He was really keen to help and get involved with the school and we jumped at the chance for him to support us. "Alex then got in touch with the wood turning association and they have supported us by giving us a permanent loan of some equipment to help

the club." Christina Owen, a design and technology teacher at the school, was particularly keen to support the project as she was previously involved in a wood turning club at Forfar Academy. She said: "It's really nice to get the kids involved. "They can create really complex things quite easily. "One girl at Forfar Academy had attended the wood work club there since S2 and by the time she was sitting her national five's the work she was producing was at such a high standard. The school is keen to thank Ware With All Bathrooms in Greenock for donating wooden pallets for the children to use. Any crafters who would like to help or any businesses who could donate wood to the club are asked to contact Ashley Quinn at the school on 712520.



Becca wins Scoop

PROMISING young dancer Becca Tierney, 13, who attends Inverclyde Academy, is this week's Scoop winner. Her mum Julie says Becca plays our game every week with dad Robin and her grandpa Jimmy. She said: "She'll probably spend the money on clothes." Becca, who lives with her mum, dad and brother Callum, 16, in Inverclyde's

Aberdour Place, spotted the pesky scoop on page eight of last Friday's Tide. For a chance to win today, search for Scoop and fill out the form. Remember winners must agree to a photo.

Name: _____
Address: _____
Tel: _____
Page No: _____

Send entries to Scoop, Greenock Telegraph, 2 Crawford Street, Greenock, PA15 1TB. No entry by post on Tyneside.

BLAIR & BRYDEN
SOLICITORS

- Accident and injury claims with no win no fee
- Family and child law
- Employment cases
- All civil court work
- Guardianship and Powers of Attorney

20a Union Street, Greenock
(above MSP Parliamentary Office)
Telephone 888777
34@blair-bryden.co.uk
and
39 Princes Street, Port Glasgow
Telephone 745117
pg@blair-bryden.co.uk

Newspaper coverage of the first meeting in the Greenock Telegraph.



Development and Training

Member Training Workshops

Paul Howard

29 New Bridge Rd, Tiptree
Essex CO5 0HS

Tuesday 17th April 2018

Beginners
Back to Basics

Andrew Hall

Croesyceiliog Community Education
Centre, The Highway, Cwmbran, Torfaen,
NP44 2HFE

Friday 15th June 2018

Intermediate
Corinthian Helmet Workshop

Les Thorne

Upton Park Farm,
Alresford SO24 9EB

Friday 22nd June 2018

Beginner/Intermediate
Basic Spindle/Bowl Turning Workshop

**To apply - visit the AWGB website:
www.awgb.co.uk and download an
application form and send to the
coordinator shown on the form.
Or complete a 'Training Workshop
Application' Web Form.
Only fully completed application forms
will be considered.**

Allan Calder's Ltd Sandpaper Supplies

Unit 2B Churnet Works, James Brindley Road,
Leek, Staffordshire ST13 8YH



We are supplying top
quality brands of
sanding abrasives for all
types of wood turners.

www.sandpapersupplies.co.uk

Email: sandpapersupplies@yahoo.co.uk
Tel: 01538 387738

AWGB Merchandise

Lapel Badges
Brass & enamel
£3.50 p&p included



Cloth Badges
For sewing on smocks etc.
£4.50 p&p included



Windscreen Sticker
£1 plus sae
(standard letter rate)



**All available from the AWGB
Membership Secretary
(details on page 3)
Make all payments to AWGB**

Strathclyde Woodturners

John Gorman



John McN introduced and welcomed Andrew Hall to the club and thanked all members and guests attending the demonstration and assured them it would be an instructive, interesting, amusing day and we would all gain something from the experience. Jim then demonstrated the unique but effective fire escape in case it was required.

Andrew began the demonstration by speaking about his industrial background and his journey from his exposure to turning at school, (with the evidence!), acquiring a trade, entering teaching at a further education college, then how he developed his skills to where he has arrived in the professional sphere of turning. Although Andrew has been producing hats for some time, he gave recognition to Johannes Michelsen for his advice and thoughtfulness on sharing his methods and experiences with him.

Andrew showed examples of his work on screen, and some he had brought with him from a bow tie, hats, owls and several of his remarkable Blues Bowl Guitars. It demonstrated a great variety of objects requiring different techniques of turning.

One of the first things Andrew likes to do is check the toolrest is smooth to allow uninterrupted passage of the tools along its length and the headstock and tailstock are properly aligned by the "kiss test". Another important piece of advice Andrew made was to wear proper footwear, preferably sturdy boots, especially when turning heavy objects. When preparing the blanks for the hats, Andrew stressed that they should be wet, and as freshly cut from the tree as possible, (within days if possible). The size of the blanks should allow the hat to be orientated and turned as side grain, and not include the pith if you were able.

Andrew had brought a prepared blank for a small hat which had been recently cut, still wrapped in pallet-wrap to retain as much of its moisture as possible.

The blank was mounted between centres with the flat section of the piece at the headstock, and turned by hand. The position of the revolving steb-centre in the tailstock was adjusted until the blank was balanced and rotated without

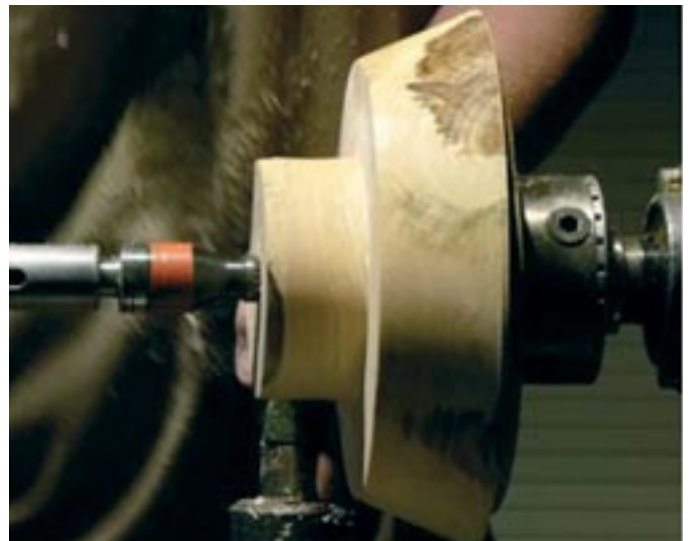
"settling" at any particular place. This would allow the piece to turn with the minimum amount of imbalance and minimum of vibration in the initial stages while it was "trued up". This is begun with the lathe started at a slow speed and increasing the speed gradually until the work was revolving with the minimum, but an acceptable amount of vibration.

To get the shape of a hat for wearing, Andrew placed a Flexicurve around his head, which was carefully removed to retain the shape created. This shape then was transferred to a piece of card, which in turn was transferred to a piece of scrap plywood. This shape was cut out and used later for shaping the hat by placing the blank inside the rim when the hat is placed in the clamping frame at the end of the process.

To discover the outside size to be turned, you have to add up the front to back size to the side to side size, divide by two, then add one and a quarter inches. This gives a good indication of the outside diameter required for your hat. Any discrepancy in the size can be taken up with the addition of "comfort bands" attached to the inside of the hat.



The first step when turning the hat was to turn it to a conical shape with the top of the hat turned to your "outside hat band" size. The top size is continued partway down the length of the hat, but not down to the rim.



To utilise as much of the material as possible a ring of the material was removed at this stage using a parting tool. The parting tool was used in an arcing motion. The toolrest was



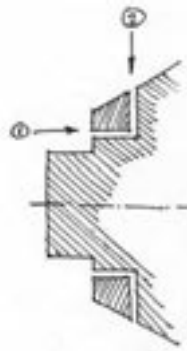
about 6 mm below the quill centre and the parting tool introduced in an upward motion, then arcing down toward the centre of the piece. Care has to be taken to ensure that the cuts meet where there is still enough material left to complete the hat.

The ring is then carefully removed and can be used for a mirror or photograph frame.

The hat is then trued up nearer to a finished overall shape. A chucking point is also cut at the top of the hat. The size and shape of this chucking point is important. You should use the largest jaws you have to ensure there is good grip on the piece when hollowing later in the process. The mating face should also be flat, again this provides support when the forces applied as hollowing the piece progresses.

He then shaped the hat and a piece was left proud at the brim to simulate the hatband. Taking care to create a clean and smooth surface as possible.

Colour was applied to the hatband using Derwent Colour Pencils. Andrew has found that this type of colour pencil doesn't bleed when using water while the sanding process is being done next.



- Clean the slurry from the abrasive, do not allow it to build up as it renders the abrasive ineffective.
- Go through the grits, do not skip, or miss any grade out. It is good practice to remove the slurry between grits.
- Keep the piece moist with a water spray.

When the piece was sanded to Andrew's satisfaction he then sprayed it and cleaned off any residual slurry then dried the excess moisture with a towel and left the piece with a towel draped around it to stabilise for about half an hour.

After leaving the piece to settle for half an hour, (lunch time), the chucking tenon was crisped up before turning the hat around to grip in the chuck. Care was taken to ensure the piece was centred before fully tightening the chuck.

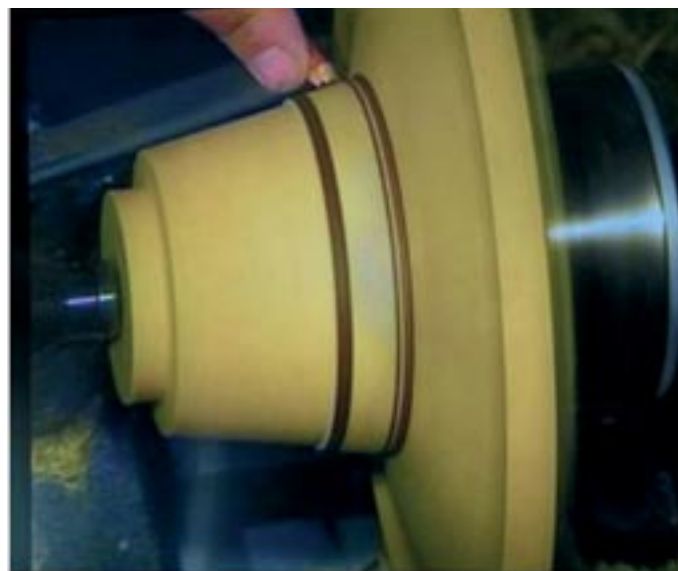
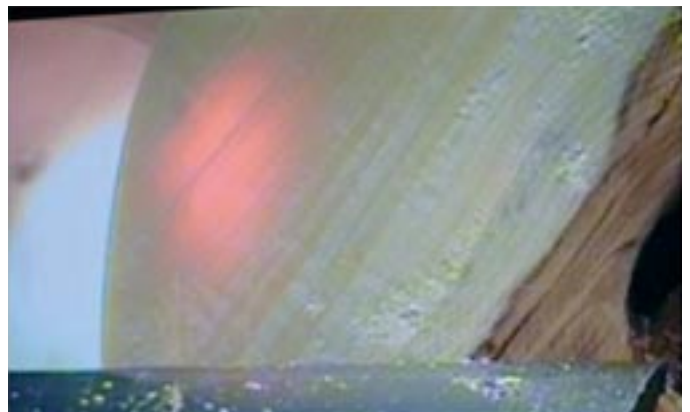


Andrew trued up the brim of the hat first. This is the point where the thickness of the piece is addressed. Andrew mentioned the need to use a light source as well as touch and callipers to achieve and maintain the thickness throughout the piece.

Andrew makes his hats in different thicknesses, if the purpose of the piece was for a demonstration, around 3-4 mm thick, or for a gallery piece, around 2-3 mm thick.

In the past, Andrew has used tungsten light bulbs, but has changed to using LED's. He finds them brighter, smaller, and more robust. They can also work out cheaper than the tungsten ones too. Andrew used <http://www.woodart-products.co.uk/> to purchase lights from, as well as the internet for some of his other lights.

The thickness was monitored by checking the passage of light through the thickness of the brim. The light was behind the brim, (headstock side), and Andrew was looking from



Once Andrew was happy with the finish achieved from the tool he approached using abrasives with as much diligence and care as using the turning tools he had been using up until now.

Several key points were stressed when using the abrasives on the piece.

The abrasive would be used wet, which ruled out paper backed abrasives. Abranet or cloth backed, are good to use.

- Keep the work and abrasive wet.
- Protect the lathe from the water, especially if the motor is under the bed of the lathe.
- Abrade in one direction, not in a circular fashion.
- Keep the abrasive moving.
- Create a "slurry" with the abraded waste, but periodically wash and clean the work and clean it off.

the tailstock end as he cut the brim to thickness. The work constantly required moisture, so it was sprayed often as the work progressed.



Once the brim thickness has been achieved and checked with callipers, it was time to tackle the crown area of the hat. Taking care to establish where the outside hatband is, a parting tool was used to remove a cone shape from the inside of the hat removing a substantial area from the inside. This cone shape was put aside and like the ring removed earlier, Andrew was going to use it for another item later in the day. Ever the Yorkshire man, as little waste as possible!

Using push cuts, the inside shape and thickness was determined about 30 mm deep at a time. Care has to be taken, as there can be a difference of light penetration through the piece due to the thickness of the hatband, long and short grain and sometimes heartwood and sapwood in the piece.

The use of Andrew's "scissor callipers" were excellent for this purpose as they could monitor the thickness of all areas of the hat as work progressed, they would even cover all areas of a full sized hat.

Again, Andrew stressed the need to keep spraying the piece and keep it wet, especially as the wood dried out as the thickness of the hat became thinner as the work progressed.

The light source would also have to move to the area that was being worked on, to monitor the thickness before checking with the callipers.



It is good practice to ensure the toolrest is as close to the work as possible and the work rotated by hand to ensure there is no contact between the piece and any hardware before switching the power on

Keep spraying to keep the piece wet.



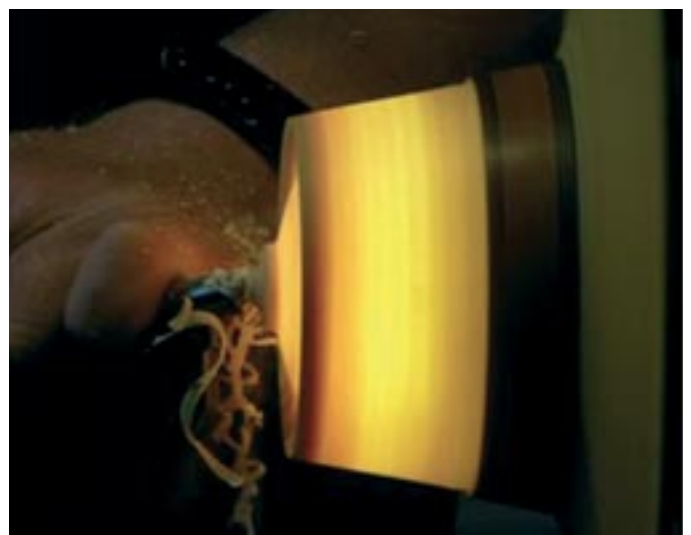
A concave dome shape is formed on the top of the crown of the hat. Check the depth of the crown and again, keep the work wet. It is advisable to keep the top of the crown a little thicker than the side to give the hat strength.

Finishing the inside of the crown area with abrasives. Using a piece of "wet" abrasive in each hand, and the lathe protected, begin to sand the inside and outside of the crown. The outside of the hat has already been sanded down to 240 grit, so 240 grit is used again on the outside as you progress through the grits on the inside of the hat. Care should be taken not to sand the coloured hatband at this stage.

Pressure with the abrasive is applied simultaneously from inside and outside to equalise the pressure put onto the piece and diminish the possibility of putting it out of balance. The previous method of using the water and creating a slurry, then cleaning it as you progress through the grits, is again followed here.

Once the desired finish has been achieved the hat is removed from the chuck then placed over Andrew's jam chuck with LED torches on the inside of the jam chuck. There was router matting around the jam chuck and layers of the matting were peeled off, (or layered on), until the hat was held firmly by the jam chuck.

With the torches switched on and the hat centralised, the tailstock is moved up and engaged in the small indentation



created when the initial turning of the outside shape was done. It was rotated and checked for balance and adjusted as required. When the piece was in balance, the tailstock was carefully removed and the hat was gently pressed on to the jam chuck until small bubbles of air were present on the hatband. These bubbles indicated the hat was sufficiently gripped by the jam chuck, but care should still be taken at this stage. The tailstock was used for light support as the final stage is performed.

The removal of the stub and formation of the crown shape is now done with care, only taking small cuts at a time, and again, keeping the area wet. The light from the torches should give an indication of the thickness as the work progresses. It is not necessary to have the crown too thin, it is actually better to have some thickness, especially at the corner where the top of the crown meets the side as this gives the piece strength.

The tailstock is removed, and the last of the crown is carefully cut away a little at a time, to blend into the shape and thickness required. The crown is then carefully sanded, keeping it wet and going through the grits with the lathe protected from the water as before.

The finished hat can now be removed from the lathe and left in a dry, cool area for about two hours. This allows the timber to "relax" and reduce any stresses in the piece, before placing it into the frame and stretching the elastic bands over the brim. Having too many elastic bands or having them too tight can cause the brim to split or "over-bend" to an unnatural shape. You should check the progress of the bending and slightly adjust the position of the bands regularly every hour or so.

The hat should be left in the frame for two to three days in a warm airy atmosphere. At no time should it be forced dry by placing it on, or near a radiator or a sunny windowsill.

When it's removed from the frame, the piece should be carefully rubbed down with 320, 400, 600 grit abrasive, until the required finish is achieved, then any residue cleaned away. Spray a couple of light coats of Acrylic Sanding Sealer, lightly rubbed down between coats with the last grit of abrasive you have used. Using a spray was better than brushing on a finish because using a brushed finish sometimes caused the colour pencil on the band to bleed.

Several light coats of lacquer can be applied to achieve your desired finish remembering to rub down with smooth abrasive or Webrax between coats.

Andrew then went on to show what a previous pupil of his did with the cone shape which was removed from the centre of the hat.

The cone was held between centres, and a chucking dovetail was formed at the larger diameter end. It was then placed in the chuck and the conical shape was dressed up and refined. At the narrow end a small concave surface was made about 15 mm across, at the broader end it was carefully parted off with a narrow parting tool with a slight concave surface to give it a stable stance when it was placed on a surface. When the piece was parted off, the nub was removed with a small chisel and cleaned up.

The conical stand is used by nail technicians to work on a customer's nail as the customer's finger was placed into the slight indentation on the top of the cone, and the technician could work on the nail at a comfortable angle and height.

Andrew continued his demonstration with his signature Corinthian Helmet. He began with a log around 100 mm diameter, 200 - 250 mm long. As much loose bark was removed before it was mounted in the lathe between centres.

Then using a Beading and Parting Tool in an "arcing cut", a dovetail chucking spigot was created at each end of the piece.

Next a parting tool was used to part off about a third of the way along its length. It is not advisable to fully part off between centres, about 6—12 mm diameter is left and pressure reduced by slackening off the tailstock a little, then the cut is finished by a hand saw.

The larger piece was then gripped in the chuck and the end trued up. It was then drilled to the depth required by using a twist drill in a Jacobs Chuck held in a home-made handle.

Andrew began the hollowing process using a bowl gouge.

To try and minimise the chance for a catch, Andrew switched to using a Simon Hope carbide tipped hollowing tool. This tool can be used from outside to the centre and from the centre towards the outside. It can sometimes have an aggressive cut, so care should be taken when it is used. A

The East Herts Woodturning Association wish to advise their members and friends of the Sunday Demonstrations booked for 2018.

25th March Stuart King

22nd July Andrew Hall

21st October Martin Pidgen

Venue The Pavillion, Bullfields, Sawbridgeworth CM21 9EA

Fee £12 including light lunch, teas and coffee

Please contact East Herts Secretary Tony Hinksman on 01279 814337 to book place and supply any dietary requirements



concave, dome like shape was created for the inside of the helmet. As the finish is often a little rough from this tool, the use of a scraper may be required to achieve a better finish on the inside.

A small ball ended Sander was then used to give the inside a good finish, again going through the grits to achieve this.

The outside shape was now tackled and refined. Using another of his lights from Woodart to illuminate the piece from the inside. The LED light was attached to a rod, which was fixed to the tailstock. The outside cuts were made along the length of the work. Where the light diminished, it indicated the transition of the beginning of the internal dome. (a check on the internal depth confirmed this).

The shape was turned and described, similar to a "goblet" shape, always keeping an eye on the intensity and consistency of the light, as the top of the piece was turned to follow the dome shape of the inside.

A thicker portion at the crown of the helmet was left which enhanced the design of the helmet and also a 5-6 mm diameter spindle with a taper was created. The helmet should be sanded carefully at this stage, through the grits. It is then parted off using a fine hand saw.

Andrew used templates to draw out the shapes required for the eyes, cheek and ear spaces on the outside surface of the helmet. The waste was removed with a small Proxxon Jig Saw. To create the crest of the helmet, Andrew made a disc about 150 mm diameter and 30 mm thick. Chucking points were created on each side to allow shaping to take place. After sanding it was removed from the chuck and the finished helmet offered up to the disc. Andrew then marked the length and a rough shaped outline of the crest freehand. The turner can usually get three to four crests from the one disc if they are careful. The shape is then cut out with the bandsaw and sanded by hand and a sanding arbour mounted in the chuck of the lathe. The crest is then attached to the helmet and finish applied as desired.



Andrew suggested that the helmets and hats always looked better when they are displayed on stands. Andrew continued his demonstration by making a hat stand from firewood. It took the form of a spindle with beads, coves of various sizes and radii with a tenon at one end and a rounded over bead at the other. This was attached to a base turned from the same piece of timber which had a hole drilled in it to accept the tenon on the spindle. The helmet was placed on the top for a fine display.

Andrew finished the demonstration by showing a Smokin' Snowman, and how it could be an attractive little project for Christmas.

He then talked about his interest in music and how the idea for his Blues Bowls came about. He showed several of the finished pieces he had brought with him and gave a musical demonstration of several of them too, much to everyone's delight.



The day finished and Andrew was thanked and applauded for his comprehensive and amusing demonstration. I enjoyed the day very much and learned a great deal. I particularly admired the way Andrew managed to convey the information in a friendly style and easy manner with humour from his fund of knowledge gathered by his experience and enthusiasm.



Ashley Iles
woodcarving & turning tools
made in the old tradition

Precision Made Woodturning Tools



Ashley Iles, Solly Street c.1958

Send £1.50* postage for our 49 page Catalogue and Price List

*£5.00 Mainland Europe and Eire, £8.00 USA and Rest of the World

Ashley Iles (Edge Tools) Ltd, East Kirkby, Spilsby, Lincolnshire PE23 4DD
Tel: 01790 763372 Fax: 01790 763610
Email: sales@ashleyiles.co.uk
www.ashleyiles.co.uk

Tudor Rose Woodturners

FREE
ENTRY



FREE
PARKING

WOODWORKS@DAVENTRY

FRIDAY 11th and SATURDAY 12th May 2018
10am-4pm

DAVENTRY LEISURE CENTRE - NN11 4FP

CLUB DISPLAYS and COMPETITIONS

TRADE STANDS

REFRESHMENTS - RAFFLE

DEMONSTRATIONS BY PROFESSIONAL TURNERS

JENNIE
STARBUCK

MARK
SANGER

STEVE
HEELEY

EMMA
COOK



BOB
NEIL

Association of Woodturners of Great Britain



Member Training

Tutor Assessment Day

Sunday 1st April 2018

Paul Howard Woodturning
29 Newbridge Road, Tiptree
Essex, CO5 0HS

**Applications to John Montgomery
AWGB Demonstrator Training &
Tutor Assessment Coordinator
Email johnmontgomery@awgb.co.uk**

Lincolnshire Wolds Woodturning Association



Lincolnshire Wolds Woodturning Association opened its doors for a special "Hands On" night inviting the Coningsby Young Farmers Club members to come along and have a go at woodturning. A really good number turned up and most had a go and showed great promise. The regular Wolds turners shared their skills with the youngsters and were very impressed with the level of enthusiasm and also how quickly they took to the task.



It is an ongoing ambition from the Turning Club to encourage younger people into the hobby and regularly have a hands on night, the second Tuesday of each month, held in the West Ashby Village Hall, near Horncastle. They will also have a stand at The Midlands Woodworking and Power Tool Show, Newark Showground, 23rd & 24th March 2018. For further information visit; <http://lincswoldswoodturning.co.uk/about/>



W.L. West & Sons Ltd
Selham, Petworth, GU28 0PJ
t: 01798 861611 f: 01798 861633

- Hardwoods
- Wood finishes
- Australian Burrs
- Exotic Timbers
- Woodturning Blanks
- Woodturning Courses (see website for dates)
- Woodworking Machinery
- Woodworking Tools
- Fencing, Gate & Decking Products
- Bespoke Garden Furniture

**Timber, Tools & Machinery
for D.I.Y • Carving
Woodturning • Furniture Projects**
shop@wlwest.co.uk

Off A272 Midhurst to Petworth road opp The Halfway Bridge Inn

RECORD POWER

Open: Mon-Fri 8-5 & Sat 9.00-11.00pm
www.wlwest.co.uk



Note

Broadland Woodturners

Broadland Woodturners are proud to announce that they are moving to a new-to-us, historic and atmospheric venue.

The club's future meetings will be in the **Priory Centre, Great Yarmouth, NR30 1NW** (next to St Nicks Church and behind the famous Anna Sewall House) on the second Tuesday of each month starting around 19.00hrs. Visitors, as well as prospective new members, are welcome.

Further details from chairman, Brian Hollett on 01493 728099.

ProEdge Sharpening refined

The Robert Sorby ProEdge offers effortlessly repeatable sharpening every time.

Features and benefits:

- Change belts in seconds
- Flat bevel rather than hollow grind
- Wide range of grits and abrasives
- Belt sharpening lowers risk of overheating
- Sharpen at exactly the same angle every time
- Nine factory indexed settings provide a guide for all types of tool
- Can be locked between indexes for custom settings

Wide range of accessories to suit all sharpening needs



Robert Sorby
The Robert Sorby ProEdge: Sharpening made simple

www.robert-sorby.co.uk



Proudly Made in
Sheffield, England
Patent Number: 2438962

Inverclyde Woodturning Club

New Kid on the Block by Alex Francis

Inverclyde Woodturning Club is probably the latest club to become members of the AWGB.

Having attended a number of local Craft Fairs where several people indicated to me that they did a bit of wood turning I thought that it would be an idea to see if there was enough interest to start a club locally. Our nearest club to Inverclyde was an 80 mile round trip.

I then searched around for somewhere to meet preferably in an evening and found that Inverclyde Employment Trust had workshop space which they would allow us to use.

I arranged to have a meeting of anyone interested last January and our local newspaper very kindly helped promote this meeting with a very substantial article. At that first meeting we had 26 attendees, but this caused a major rethink of the way I had envisaged the club since only about 4 of those attending had any woodturning experience.

Fortunately the Trust allowed us to use their equipment and even purchased two more small lathes to help. Because of the article in the paper another lathe was donated to the club.

We initially started with a "hands on" approach where the members with some experience mentored those who were just starting out.

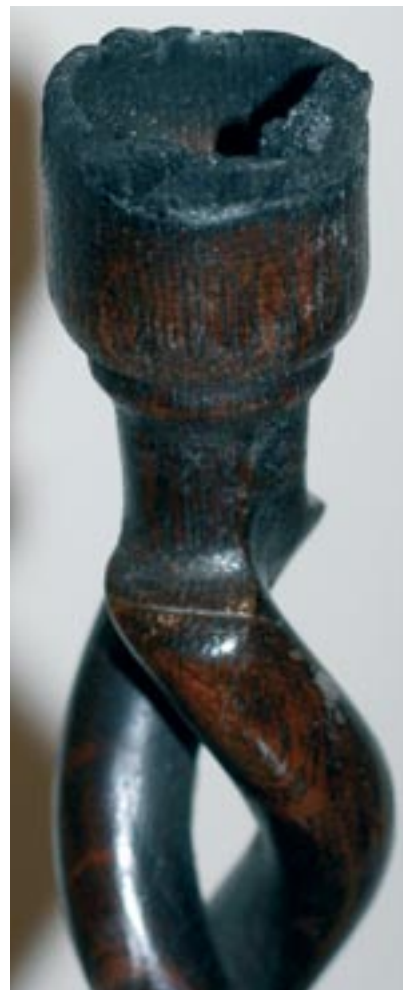
Although the majority of our members now have their own lathes we continue to meet every week but once a month have a demonstration from one of our more experienced members. We have also managed to get some grant money and have purchased a Record Coronet Lathe and a small Axminster Hobby lathe which we can take to any demonstrations in the wider community.

In January this year we joined the AWGB with 21 very enthusiastic members.

A Cautionary Note!

Les Symonds

Recently, a customer came to my shop, where my wood turning business is based, and asked if I could make new tops for a pair of wooden candlesticks. These had been used in a holiday let and the visitors had lit candles in them, then left them to burn right down to the base. Not having any non-combustible material between the candle and the wood, the top of each of the candlesticks caught fire and a smoke detector sensed it, setting off the fire alarm. I know that my local authority's Trading Standards office demands non-combustible materials in the top of candlesticks, but whether that is a national requirement or not, simply is not the point. No wood-turner should produce (especially for sale) a product which is potentially dangerous and whether we're making candlesticks, candle-stands or even tea-light holders, pure common sense tells us that an insert of some description is always necessary.



**Association of
Woodturners**
of Great Britain



**Development
and Training**

Youth Training Programme

Date	Topic/Technique	Organiser	Venue
19th May 2018	Workshop Health & Safety Various Projects and techniques	Peter Bradwick	Croesyceiliog Community Education Centre, The Highway, Cwmbran, Torfaen NP44 2HF
25th - 26th August 2018	Workshop Health & Safety Various Projects and techniques	Stuart Mortimer	Hope Cottage Grateley, Hampshire SP11 8JT

**For application forms and information visit... www.awgb.co.uk
Or contact... Ron Caddy - 07903 313065 e-mail acorncrafts@tiscali.co.uk**

Principles

The purpose of this document is to clarify the policy of the wearing of protective eye and face equipment when using a woodturning lathe.

Terms

The use of the term PPE (Personal Protective Equipment) in this document refers to eye protective equipment.

The term eye and face protection will encompass safety spectacles, including prescription safety spectacles fitted with side protection, goggles and face shields, face screens and visors.

Organisation

To help promote a healthy and safe attitude when working on the lathe, be it at a professional or hobby level, the AWGB has adopted guidance from the HSE as a minimum level. It is a crucial element in the promotion and maintenance of a positive health and safety culture and in achieving high standards of health and safety awareness at all levels throughout the Association. Any subsequent revisions of this policy will be brought to the notice of our members.

Responsibility

It is the responsibility of each individual member to work safely and reduce the risk of injury caused through lathe operation. It is also the responsibility for those members that are concerned about unsafe practices at demonstrations and teaching practices to raise these concerns at the earliest convenience with the person practicing or the relevant supervisor.

It is also the responsibility of event organisers and demonstrators to protect audience members from harm.

Health and Safety is everyone's responsibility.

Policy

PPE to be worn when turning is being undertaken on the lathe. Generally, a visor should be used for face plate/side grain work because the risk of a large piece of wood leaving the lathe is higher. For spindle/parallel grain work, goggles may be adequate but if in doubt, use a visor.

It will be worn when carrying out decorative work that is likely to cause flying chippings or dust or when applied decorative effects are in use and likely to splash whether on the lathe or off.

Protective eyewear should be worn when in the vicinity of rotating machinery under the control of an operator other than you.

Supervisors and tutors must ensure that all turners conform to this policy during training and hands on events and when undertaking private tuition.

PPE will be worn when decorative effects or finishes are applied with the lathe running.

All demonstrators and tutors must emphasise the use of protective eyewear.

Eye protection must be worn when using a bench grinder.

Care and maintenance

Safety eyewear should be cleaned regularly as per the manufacturer's instructions. They should be scratch free and they should not be used if they are damaged in any way.

They should be replaced at least every two years.

Ensure that the eye protection used has the correct rating for the task (EN166 "B" medium impact rating for general turning use) and fits the user properly. The ANSI Z87+ standard is broadly equivalent to the EN166 "B" rating.

For further reference HSE website www.hse.gov.uk

Renewal Reminder

If you haven't renewed your membership this maybe the last edition of Revolutions you will receive.

If you are just renewing without changing your details or gift aid status, you don't need to complete the membership form again. All you need to do is send payment - either cheque with your membership number on the back; bank transfer with your surname and membership number as reference or you can renew via the AWGB website www.awgb.co.uk.

Demonstrator Training and Tutor Assessment

Demonstrator Training courses continue to be popular and are being organised on a needs basis. The course that was to be held at Castle Douglas in January was postponed due to the bad weather. The rearranged course has now taken place. There is a course in Suffolk on 23rd March which is fully subscribed and another in Birstall at a date to be arranged which is also fully subscribed. If there are any members that would like to attend the Demonstrator Training course fill in an application and send to me and we will do our best to arrange a course.

The Tutor Assessments are continuing with an Assessment day at Paul Howards workshop on Sunday 1st April and another at The Mill, Portishead on Saturday 23rd June, ads for these courses are in this copy of Revolutions.

If as a member you would like to be assessed and cannot make either of the two dates advertised still send an application and we will try and arrange an assessment in your area. Ideally we need 4 members to arrange either of the above training events although we can still run with 3 members if a fourth is not found in the area.

If you have any queries regarding these two training initiatives please contact me and I will do my best to answer them.

John Montgomery

Demonstrator Training & Tutor Assessment Coordinator

e-mail johnmontgomery@awgb.co.uk

Tel: 01752 894083

Herts & Beds Woodturners

Bruce Edhouse

We recently held a teaching session at Gary Rance's workshop. There were 4 learners each with access to a lathe. The day went very well and at the end I asked for feedback. Below is a very good account of the day and shows just how much can be achieved in one day.

The picture below, an apple that was made by one of the learners after he had asked how to make a screw chuck.

Many thanks to the AWGB for the grant that allowed this to happen.



From Harvey:

Many thanks again for organising today - I had a fantastic time, and learned loads! As requested, a few bits of feedback:

Gary made us very welcome in his well-equipped workshop. After a few words on safety, we immediately got down to turning, with each student having their own lathe. We went through all the basic spindle turning techniques, and Gary gave lots of expert tips and one-to-one assistance. I now feel much more secure and confident in using my tools, which means I can relax and enjoy myself all the more. In particular, we spent a lot of time on posture and transferring weight whilst turning, which is hard to see in club demonstrations.

At lunch we swapped experiences and got to know each other better, which built a sense of camaraderie with fellow club members at the beginning of our journey in turning. Gary kept up a stream of stories with the tea and coffee, and soon after we were back in the workshop for more individual projects. I had asked for tips on making a screw chuck in the morning, and Gary showed me how to make one. In fact, in less than 2 hours we had made not only the chuck, but also an apple from walnut, which gave me a great memento of the day, and some tangible proof of the improvement I had made. Some of the others worked on faceplate and bowl turning, which all looked very impressive. Somehow Gary and Bruce managed to provide continual support with all these different activities going on at once.

If I remember half of what I was taught today, I will still be a 100% better turner than I was beforehand. The day passed so quickly I and the others almost couldn't believe that 4pm had rolled around and it was time to tidy up and go. A sure sign of a good time!



Stiles & Bates

The Woodturning People

Shop Free Mail Order Catalogue Website

Upper Farm, Church Hill, Sutton, Dover, Kent. CT15 5DF
Tel: 01304 366 360
www.stilesandbates.co.uk
sales@stilesandbates.co.uk

VISA VISA VISA

Application for Membership / Renewal of Membership

I wish to apply for membership / renew my membership of the Association of Woodturners of Great Britain (AWGB). I understand that the AWGB is a company limited by guarantee, and if it is dissolved while I am a member or within 12 months after I cease to be a member, I will contribute such sum as may be demanded of me, up to £1 maximum, towards the costs of dissolution and the liabilities incurred by the Company while I was a member.

PLEASE USE BLOCK LETTERS

Membership Number (if already a Member)	Tick if you are applying for the first time
Title	
First Name	
Surname	
Address	
Postcode	
Phone/mobile Number	
AWGB Branch name (if applicable)	
Email (if applicable)	
Website (if applicable)	
Individual / Junior / Family / Overseas Membership. (Delete as required.)	
Junior Members please give your date of birth	
If you are applying for Family Membership please give the names of your family here	

The membership year runs from 1st January to 31st December. Half year membership is available from 1st July to 31st December at half the yearly subscription rate. Applications received after 1st October will last until 31st December in the following year, providing the full annual subscription has been paid

Subscription rates UK members Individual - £18 Family - £28
Junior - if under 22 on 1st Jan of membership year - Free

Subscription rates for overseas members Individual members - £28 Sterling

Please sign at the end of the form.

Payment Methods

Cheque payable to the AWGB.

Bank Transfer - please pay into our account as follows:

Santander, Sort Code 09-01-28, Account Number 32277785

Please quote your membership number and surname/family name in the reference field.

From overseas: IBAN is G875ABBY09012832277785

BIC code is ABBYGB2LXXX

Standing Order - please contact your bank and arrange payment on 28th December of each year quoting your membership number and surname/family name as the reference.

Please indicate your method of payment: cheque / direct bank transfer / standing order

Gift Aid declaration - for past, present & future donations

Name of Charity: Association of Woodturners of Great Britain Registered Charity 1150255

Through the Gift Aid scheme, we can reclaim the tax on your donation or membership subscription. For every pound that you give we can claim an extra 25p from the Inland Revenue. We will also be able to reclaim the tax on any future donations you make.

☐ Please tick the box if you would like the AWGB to benefit from gift aid on your membership fee / donations

I would like the AWGB to reclaim tax on any eligible donations or membership subscriptions that I have made in the last four years and in the future, until further notice. I confirm that I pay the amount of UK income tax or capital gains tax for each tax year (6 April to 5 April) that is at least equal to the amount of tax that all the charities or Community Amateur Sports Clubs (CASCs) that I donate to will reclaim on my gifts for that tax year. I understand that other taxes such as VAT and Council Tax do not qualify.

Please notify the AWGB Charity if you:

- ❖ Want to cancel this declaration
- ❖ Change your name or home address
- ❖ No longer pay sufficient tax on your income and/or capital gains

If you pay Income Tax at the higher or additional rate and want to receive the additional tax relief due to you, you must include all your Gift Aid donations on your Self Assessment tax return or ask HM Revenue and Customs to adjust your tax code.

Signed:

Date:

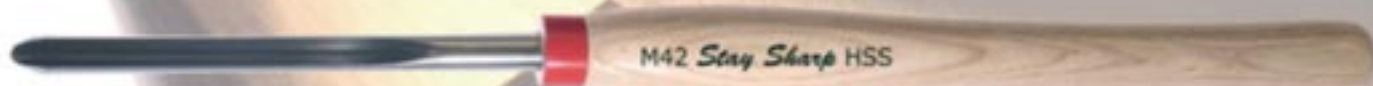
Please return to Mike Wilson, Bryn Elis, Glanhwfa Road, Llangefti, ANGLESEY LL77 7FA

Tel: 07801 446330 email: membership@awgb.co.uk

hamlet
CRAFT TOOLS

Sheffield England

Now
available in the
Glenn Lucas range of
products



M42 Turning Tools

Stay Sharper - Longer

Now available: 1/4"; 3/8"; 1/2" Bowl Gouges; 3/8"; 1/2" Spindle Gouges
with red-ferruled ash handles, or unhandled, at prices you can afford

Live The Dream - Talk to your Hamlet or Henry Taylor Stockist - TODAY!

Double Ended Bowl Gouges Perfect with our Multi Handles

For the woodturner who wants more for less
-and who doesn't-
these superb bowl gouges from premium
toolmaker Henry Taylor are the perfect answer.
Offering two alternative grinding styles -one
on each end. These Sheffield-made gouges
offer maximum versatility when paired with a
system handle such as our new *Multi-Handles*.
Available in 1/4", 3/8" and 1/2" flutes from only
£41.94 - talk with your favourite stockist.

For the advanced turner we also offer these tools
featuring the special grinds developed by renowned
Irish woodturner *Glenn Lucas*, and which also feature in
our signature bowl gouge range.



Fingernail
Profile



Standard
Profile

Proudly
Made in the UK



hamlet
CRAFT TOOLS

Hamlet Craft Tools
www.hamletcrafttools.com
sales@hamletcrafttools.com
+44(0)114 232 1338

Available through
Henry Taylor
and
Hamlet Craft Tools
stockists worldwide



Henry Taylor (Tools) Limited
www.henrytaylortools.co.uk
sales@henrytaylortools.co.uk
+44(0)114 234 0282



Certificate in Woodturning

Introduction

The Certificate in Woodturning is designed to provide a training programme that covers all the basic skills to be competent at woodturning.

The Certificate is aimed at candidates with some woodturning experience, and the more experienced with no formal training of woodturning. Therefore the Certificate is primarily a training programme of the basic skills with assessment criteria.

The Qualification comprises:

- Training units
- Multiple choice question unit end tests
- Practical assessment

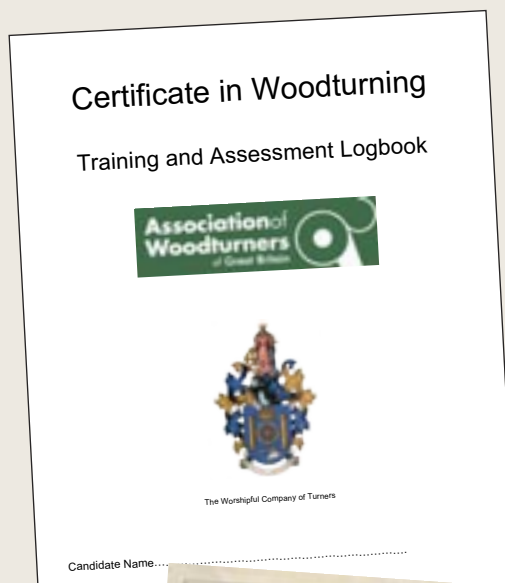
Training Units

Unit C 101	Workshop Safe Working Practices
Unit C 102	Tools and Equipment - Maintenance
Unit C 103	Wood Technology
Unit C 104	Spindle Work
Unit C 105	Faceplate Work
Unit C 106	Finishing

The '**Training and Assessment Logbook**' is issued to the candidate on commencement of the award to record the training and assessment. When complete the training and assessment is verified by the AWGB.

On successful completion the Association of Woodturners of Great Britain and the Worshipful Company of Woodturners will award the '**Certificate in Woodturning**'

**Sponsored Certificate in Woodturning Courses...
Open to AWGB members only.**



Venue	5 Well Bank, Billy Row, Crook, COUNTY DURHAM , DL15 9SP			
Tutor	Andrew Hall			
Dates	April 12th - 13th - 14th - 15th		May 25th - 26th - 27th	
Venue	The Max Carey Woodturning Trust, The Mill, Portishead, Portishead , Bristol BS20 6AA,			
Tutor	Jay Heryet			
Dates	April 14th & 15th	April 28th & 29th	May 19th & 20th	June 9th & 10th

Candidates would need to have some woodturning experience before commencing the sponsored course.

The course is part-funded and sponsored by the AWGB and the Worshipful Company of Turners. We expect four to six candidates to attend the sponsored course each paying £250.

More courses will be announced in future editions of *Revolutions*, also go to the AWGB web-site for further details and application forms...

Or contact **Peter Bradwick**
e-mail development@awgb.co.uk
Tel 01633 873640

This DUST is beautiful stuff

The dust in your workshop isn't

Three steps towards 'beautiful lungs'

One's primary consideration in moving toward a safer workshop environment is to install a good quality dust extraction system equipped with a fine filter that precludes, as far as possible, recycling of dust into the atmosphere. We can help by recommending configurations based on a range of models offering various levels of throughput.



The use of an ambient air filter helps ensure that dust not captured by the dust extraction system does not end up lying around the workshop waiting to cause a secondary source of dust as soon as you start moving things around. We recommend keeping the ambient filter running for some time after you leave the workshop at the end of a session.

We have a range of models available to suit different workshop sizes - and replacement filters.

Finally your personal protection needs to be assured by the use of a suitable respiratory protection device. For woodturning, one that incorporates impact protection for the eyes and face is a worthwhile idea. Ensure that the device is comfortable to wear for long periods - this should be worn at all times that you are exposed to dust, be that from a primary or secondary source.

There's a wide choice, but fear not, we're here to help you select!



The ToolPost

Unit 7 Hawksworth, Southmead Industrial Park, Didcot, Oxon. OX11 7HR

01235 511101 • www.toolpost.co.uk

sharing expertise