

Revolutions

THE NEWSLETTER OF THE ASSOCIATION OF WOODTURNERS OF GREAT BRITAIN

Issue No 118

September 2016

MagFigure Toy

Gilwell 24



Kebab Turning

What is a Seminar?

Make a peppermill



www.awgb.co.uk

A Company Limited by Guarantee - Company Number 8135399
Registered Charity Number 1150255

Corporate Members of the AWGB

For full information refer to previous copies of Revolutions or the AWGB website

Allan Calder's Sandpapers Ltd

Supplies high quality sanding abrasives of many types
01538 387738

Ashley Iles (Edge tools) Ltd

Woodturning and carving tools.
01790 763372

Auro UK

Natural Paints, wood finishes and treatments.
01452 772020

Axminster Power Tool Centre

Tools, finishes and woodturning accessories.
01297 630800

Charnwood

Woodworking machinery, lathes, chucks and all related accessories.
01530 516926

Chestnut Products

Quality wood finishes with emphasis on products for woodturners.
01473 425 878

Classic Hand Tools Ltd

Hand and power tools, books, DVDs, courses.
01473 784983

Crown Hand Tools Ltd

Range of fine woodworking handtools.
01142 612300

English Hardwoods

English Hardwoods.
07979 251497

Exotic Hardwoods UK Ltd

Quality exotic hardwoods.
01298 815338

G & S Specialist Timber

Suppliers of timber, tools, lathes and accessories.
01768 891440

Goulden Hardwoods

Air dried English hardwoods in slab or round waxed blanks.
07891 592067

GPS Agencies Ltd

Alternative ivory, horn and black ebony.
01730 233366

Henry Taylor (Tools) Ltd

Woodturning and woodcarving and woodworking tools.
0114 234 0282

Hope Woodturning

Woodturning tuition, demonstrations, tools and accessories.
01206 230694

John Davis Woodturning Centre

Timber, Machinery, Woodturning Tools and Craft accessories. Tuition.
01264 811070

Lovell Workwear Ltd

Protective smocks & aprons.
Can be personalised.
02920 598327

Max Carey Woodturning Trust

A registered charity educating the public in woodturning.
07976 402960

Mirka (UK) Ltd

Surface finishing products and tools including abrasive discs, strips and rolls. Power tools and accessories.
01908 866100

Bob Mortimer Woodturning

Woodturning services for joinery, building and restoration, furniture and Cabinet makers.
01889 578838

Olivers Woodturning

Woodturning tools, finishes, blanks and on-line woodturning club.
01622 370280

Robert Sorby Ltd

Tools, lathes, and accessories.
0114 225 0700

Rustins Ltd

Wood finishes, decorating products, sealers.
020 8450 4666

Snainton Woodworking Supplies

Everything for the woodturner.
01723 859545

Southern Filters Ltd

Workshop supplies including Mirka Abrasives, Abranet and Q-silver Air Fed Masks.
01297 33860

Stiles & Bates

Comprehensive Woodturning Supplies since 1996.
01304 366360

T&J Tools

Abrasives and sharpening products.
07973 576554

The Toolpost

One stop resource for craftsmen and women around the world.
01235 511101

Turners Retreat

Complete range of woodturning tools and courses.
01302 744344

W.L.West & Sons Ltd.

Timber, Machinery, Turning and carving tools, accessories, books and woodturning courses.
01798 861611

Woodturning Magazine (GMC Group)

Best selling magazine for woodturners. Suppliers of books, DVDs & magazines
01273 402871

Yandle & Sons Ltd

Everything for the woodturner.
01935 822207

DATA PROTECTION ACT

Your personal details are held on computers belonging to Executive Committee members. Your details are held purely for the use of the Association and are not passed on to any third party. If you object to your name, address, telephone number and e-mail address being held in this manner then please contact the Secretary.

Revolutions

**Copy deadline for the
next edition of
Revolutions
1st November 2016**

Front Cover

North Devon Woodturners,
Annual competition intermediate
winner - Martin Coates piece
more details page 7

The AWGB is a Company Limited by Guarantee and a Registered Charity. It is administered by a group of elected Trustees who are also Directors of the Company. The Trustees meet at least twice each year and at the AGM. When they meet together they are known collectively as the "The Executive". Additionally, there are a number of people who assist the Trustees in their duties. These people are not elected and are known as "Volunteers".

TRUSTEES OF THE EXECUTIVE REGIONAL REPS

President

Ray Key
The Firs, 53 Weston Road,
Breforton, WR11 7HW

Chairman

David Atkinson
87 Whirley Road,
Macclesfield, SK10 3JW
07810 648344
chairman@awgb.co.uk

Vice Chairman

Sam Webber
Serendipity, Hawthorne Close,
Grateley, Hampshire, SP11 8JL
01264 889784
vicechair@awgb.co.uk

Secretary

Mr Mike Glover
12 Grosmont Grove
Hereford, HR2 7EG
01432 378205
secretary@awgb.co.uk

Treasurer

Jeff Belcher
Nant Ceiriog, Watery Lane,
Monmouth, NP25 5AT
07798 746296
treasurer@awgb.co.uk

Membership Secretary

Ryan Davenport
30 Garendon Road
Coalville, LE67 4JA
07983 630898
membership@awgb.co.uk

Webmaster & Data Manager

Paul Hannaby
Windrush, High Street,
Drybrook, GL17 9ET
01594 544417
webmaster@awgb.co.uk

Development & Training Officer

Peter Bradwick
183 Llantarnam Road,
Cwmbran, NP44 3BG
01633 873640
development@awgb.co.uk

Trade & Business Liaison Officer

Russell Gibbs
121 St George's Avenue
Daisy Hill, Bolton, BL5 2EZ
01942 811169
trade@awgb.co.uk

Newsletter Editor

Sheila Hughes
49 Essex Street
Newbury, RG14 6QR
01635 45930
editor@awgb.co.uk

Scotland

David Willcocks
91a Easter Bankton
Livingston, EH54 9BE
07738 169561
scotrep@awgb.co.uk

Midlands

Ryan Davenport
30 Garendon Road
Coalville, LE67 4JA
07983 630898
westernrep@awgb.co.uk

South East

Colin Smith
130 Broad Oak Way,
Stevenage, SG2 8RB
01438 727495
serep@awgb.co.uk

South West

John Montgomery
150 Cleeve Drive, Ivybridge,
Devon, PL21 9DD
01752 894083
swrep@awgb.co.uk

VOLUNTEERS

Workshop Training

Coordinator

Brian Hensby
Landora, Crewkerne Road
Raymonds Hill, Axminster
EX13 5SX
01297 34115
brianhensby@awgb.co.uk

Youth Training

Coordinator

Ron Caddy
Studio 9, The Fairground
Craft & Design Centre
Weyhill, Andover
SP11 0QN
Tel: 07903 313065
Tel: 01264 350323
acorncrafts@tiscali.co.uk

Health and Safety Officer

John Boyne-Aitken
27 Rock Road, Trowbridge,
BA14 0BS
01225 752373
hs@awgb.co.uk

Chairman's Notes

Dave Atkinson

Here we are already in August as I write this – I can't believe how quickly time flies. It'll soon be Christmas! Are you planning on turning anything for gifts for your friends and family? If you are let us know, send a picture or two and we'll see if we can find room for them in the next edition.

AWGB 30th Birthday Bash

The Trustees have been busy and at our last meeting we agreed the process for applying for the 20 x £300 grants to celebrate the AWGB's 30th Birthday. All Branches and Clubs can apply and we must receive applications by 1 October 2016. If the grant pot is over-subscribed we'll pull them from a hat, otherwise we'll award the grants as we receive the applications. We have already written to all Branch and Club secretaries but the idea is for you to organise an event to celebrate 30 years. This can be a special demonstration, an open day, attendance at an event – basically anything involving woodturning. All we ask is that you advertise the AWGB grant, the 30th birthday and take a few pictures and send us a write up for Revolutions.



Demonstrator Grants

At our last Trustee meeting we agreed to simplify the process. With immediate effect you can just apply for the grant, in full, whenever you wish. You will not have to say who the demonstrator is and you can use the funds to support your demonstrator programme as you see fit.

Welcome to Eden Valley Woodturners

I'm delighted to welcome the members of Eden Valley Woodturners to the AWGB. Eden Valley has been an associated club but in July they elected to become a full Branch. So we have gained some new members and a new Branch. Welcome all of you.



Roger Stewart Fund



Dave congratulating Luke Hullock from Eden Valley Woodturners after his grant is approved.

Many of you will remember that last year we had £10,000 donated to us so we could award grants to help people on their woodturning journey. To date we have given two membership grants, a lathe for Ise and Nene, and dust extraction equipment for a young turner – Luke Hullock – also a member of Eden Valley Woodturners.

We still have lots of money available and I would encourage all of you to consider if the grant fund can help you or your colleagues.

The application process is very simple – you should complete the AWGB Discretionary Grant Form, which can be downloaded from our website.

Wizardry in Wood

Don't forget Wizardry in Wood this year. There are competitions for all AWGB members to enter and two specific competitions for Junior Members (up to and including 21 years of age). You just have time to get an entry together.

That's all for this edition. Enjoy your turning!



AWGB Demonstrator Training courses

The Demonstrator Training Courses are still running although so far this year I have not received any applications. This could be because members and clubs are concentrating on Tutor Assessment at the moment.

If there are any members who would like to attend a Demonstrator Training day please contact me or fill in an application.

Application forms for both Tutor Assessment and Demonstrator Training are available on the AWGB website. If there are members who do not have internet please contact me and I will send a paper copy to you in the post.

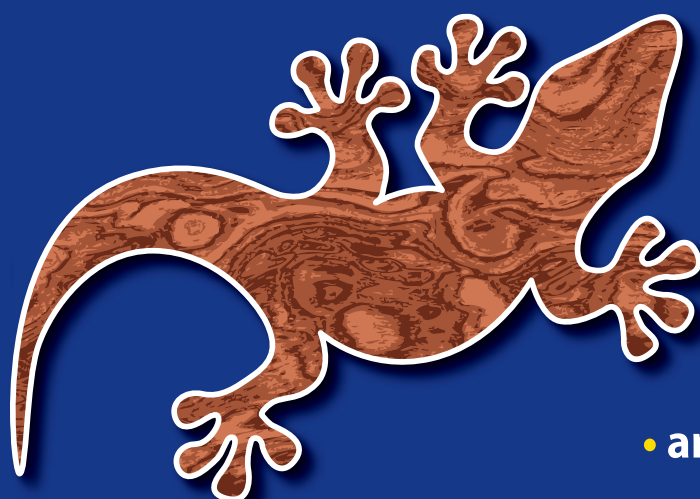
John Montgomery

Demonstrator Training and Tutor Assessment coordinator

Email johnmontgomery@awgb.co.uk

phone 01752 894083

Exotic Hardwoods UK Ltd

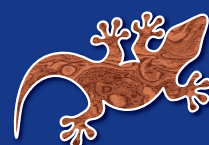


We specialise in supplying quality exotic hardwoods for:

- wood turners
- snooker & pool cue makers
- longbow makers
- guitar & musical instrument makers
- antique furniture restorers

Unit 3 Bowden Hey Road,
Chapel en le Frith, High Peak, SK23 0QZ

Contact us today on 01298 815338
www.exotichardwoodsukltd.com



exotic
hardwoods uk

A change from the Normal

LIVING CRAFTS 5th to 8th May

Colin Smith - South and East Representative

A year ago, while I was helping Brian Partridge, AWGB South and East Rep, I put an idea to him that after the Suffolk Show, and the lack of interest from the public in what the AWGB was doing, that we should think about doing a craft event, and see what the response would be. Several years ago I attended the Living Crafts Show at Hatfield House and found it well attended by people who had an interest in real crafts. To this end I approached the organiser of the 2015 event and got a very positive answer to my questions. It probably helped that I knew him very well and have kept in touch over the years. Living Crafts is probably the biggest Craft Fair organisers in the UK and one of the biggest in Europe with probably 25 to 30,000 attending the Hatfield House event over the 4 days, and crafts in over 14 marquees and demonstration areas.



Brian thought it might be ideal, and a different approach to the perennial problem of 'How do we get the AWGB message across to the Public'. So I put the wheels in motion and thought long and hard on how best to show our craft. The AWGB travelling display - 25 of the best pieces from the 2015 seminar, and good demonstrations from selected local woodturners should go a long way to putting on a good display of our talents. With that outline I contacted the organiser and told him what we could offer, and what we needed. He sounded very interested and put me in touch with the special display organiser who was very enthusiastic about my plans, and said she would like us to attend as part



of a marquee that only has demonstrations and displays of work. Brian was kept up to date with the progress, and kept Russell Gibbs, and the AWGB in the loop. In January I got the full details of where and how much room we were allocated. We would be in the Craft and Design Marquee with 5 other demonstrators, our area was 5 metres by 4 metres. The other demonstrators were a Leather worker, Musical Instrument maker, a Printer, Stone Mason and a Ceramic Artist - all demonstrating. It was going to be interesting. They were a great group.

I contacted my three local woodturning clubs and asked 2 excellent turners from each club to help. Martin Gomme and Peter Hoare from Herts and Beds Woodturners, Rowland Penfold and Arnold Davies from Cambridge Woodturners and Denis Woodley and Ronnie Barker along with Rita Woodley from East Herts Woodturners. The other reason for



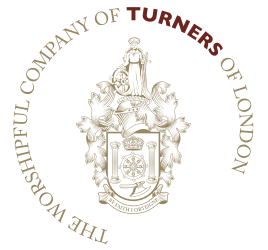
selecting them was they are good communicators, and I knew they would chat to the public. Brian was also asked to come along as he had by then stepped down as AWGB rep. I know he was very impressed by the standard of crafts at the event and that we were in such a good location. Set up went well and I was pleased with our display. The 1st day was busy and the interest quite amazing. The 2nd and 3rd days again were busy and the weather was also playing ball with sunny warm conditions. To say it was manic on the 4th day would be an understatement as we did not stop, by 5 o'clock we were ready to pack up, which I must say went very well, and after saying thank you to my helpers, I found the organisers to say THANKS. They were so pleased it went well and asked us to come back next year. I said we would be delighted.

Around 50 people asked for details of their local clubs and over 250 leaflets and other information about the AWGB was taken. 2 schools who have craft workshops and a FE college who offer Craft Courses were interested in local clubs and further information for their students. All in all a well worthwhile exercise and very pleasing for my first event. Thank you to all those who helped, and I hope we can do the same next year.

NOTE: Craft and Design is a magazine for crafts workers of all crafts

Wizardry in Wood

Art • Beauty • Skill • Mystery



12 – 15 October 2016 at Carpenters' Hall, City of London



2016 Exhibition
12 – 14 October: 10am – 6pm
15 October: 10am – 4pm

Carpenters' Hall
Throgmorton Avenue
London EC2N 2JJ

Works by over 70 leading UK and international contemporary turners

**Curated collections of outstanding modern and historical pieces,
from the Daniel Collection and the Economic Botany Collection, Kew**

www.wizardryinwood.com
www.wizardry-in-wood.eventbrite.co.uk



The Worshipful Company of Turners, Skinners' Hall, 8 Dowgate Hill, London EC4R 2SP

Southwest Area Report

John Montgomery - Southwest Representative

Since the last report from me which appeared in the March edition of *Revolutions* I have been busy keeping local clubs informed of happenings in the AWGB.

On April 8th & 9th I attended Yandles Show with the 'B' set of the travelling exhibition. The show was very busy with a large number of members visiting the stand. It is always good to meet with members and to hear their views on the association.

I have visited a few clubs locally, demonstrating at 2 of our associated clubs. They all made me very welcome and it was good to talk to the members.

On Saturday 6th August I was privileged to be asked by North Devon Woodturners, one of our associate clubs, to judge their annual competition.



North Devon competition entries

I duly turned up at St. John's Garden Centre in Barnstaple at 10 am to be met by a number of their committee members. I along with Nick Oliver, the proprietor of the garden centre, then spent the next 2 hours judging the four categories of the competition. The task was not easy with a lot of well executed turning on show. In the end we picked first and second in the four categories before the prize presentations, which the judges were asked to award.

In the novices first went to David Cloke, in the intermediate first went to Martin Coates, in the advanced first went to John

Lancaster and in the Master, which was a matched pair, it went to Keith Edwards. There was then the St John's Trophy which went to Keith Edwards, the best Master which was presented by Nick Oliver. Then the George Stokey Trophy which was the best of the other 3 categories, this went to Martin Coates and which I was asked to present. I would like



Winner advanced - John Lancaster



John presentation to Martin Coates

to say thank you to North Devon Woodturners for asking me to attend, as I had a great day in a very hot greenhouse and was made very welcome.



Nick Oliver to Keith Edwards

I will be attending Yandles Show on the 9th & 10th September with the 'A' set of the exhibition, I will then be at RHS Rosemoor in Torrington on the 8th & 9th October with the exhibition and demonstrating.

There is then Wizardry in Wood which I will be attending, this is followed up by the

new 'Woodworking West & Power Tool Show' being held at Westpoint Arena, Exeter on the 29th & 30th October when the AWGB will again be demonstrating and have the 'A' exhibition. Do come along and make yourself known to us. We are there to help and promote woodturning.

Have a great summer and autumn of woodturning, and if you would like me to visit your club for any reason please contact me.

Happy Turning



Winner intermediate - Martin Coates

The MagFigure Toy

Ian Salisbury



Most of the wood turned items we make just sit on a shelf to be looked at. So I was quite pleased, when last year for Christmas, my son asked if I could make an old fashioned turned wooden toy for his 5 old daughter. He stated that it must have play content and be fun, not just a thing you look at and no electrics.

The task of making a toy that a 5 year old can play with, was a challenge, and I wanted it to be something that could be used by either sex, this ruled out things like cars and prams.

I choose a funny version of a person, so it had to have appeal and the children could relate its actions to people. It had to suffer a lot of bumps, rough handling and be safe. So small parts and moving joints were considered unsafe, and also it had to be easy to make (for my sake).

The idea formulating in my mind was a figure with limbs that could be interchanged to any position on the body. So the figure could look silly, this being part of the play content. The

novel feature of this design is that the limbs are of the same effective length, so the figure could stand on a combination of limbs, this should be appealing to the child. To achieve this, magnets were used in the construction to fix in position the limbs onto the body, this meant that the arms, legs, head and body could be interchanged and be turned by 360 degrees, to make the figure look silly. With the added magical effect of magnets, which attract and repel each other, which is fascinating to children.

To write this article, I had to use a different wooden toy. The reason, the children who live 200 miles away from me will not let my have the toy back, as they like playing with it. I am very pleased, as it confirms the design concept was successful.

Construction Details

A full detailed drawing, giving the shape and size of the figure, is at the end of this article

Body manufacture

The wood required is 50mm square 76mm long, I used Beech throughout this project as it has a good grain structure, but any wood with a tight grain, would be acceptable.

I used a chuck which would hold a 50mm square profile, as shown in the photo. But you could turn a spigot on the end of the wood to hold it in your size of chuck.

Turn the wood down to 44mm diameter, 63mm in length. Profile the shape, given in the drawing (use this as a template).



Allan Calder's Ltd Sandpaper Supplies

Unit 2B Churnet Works, James Brindley Road,
Leek, Staffordshire ST13 8YH



We are supplying top
quality brands of
sanding abrasives for all
types of wood turners.

www.sandpapersupplies.co.uk

Email: sandpapersupplies@yahoo.co.uk
Tel: 01538 387738

ProEdge Sharpening refined

The Robert Sorby ProEdge offers effortlessly repeatable sharpening every time.

Features and benefits:

- Change belts in seconds
- Flat bevel rather than hollow grind
- Wide range of grits and abrasives
- Belt sharpening lowers risk of overheating
- Sharpen at exactly the same angle every time
- Nine factory indexed settings provide a guide for all types of tool
- Can be locked between indexes for custom settings

Wide range of accessories to suit all sharpening needs



"I really liked the system and recommend it. It was quick and simple to set up and very easy to use. I really believe that my tools were sharper than when sharpened on a wheel."

Joseph M. Hermann, Editor
Woodturning Design

Woodturning
Design



Proudly Made in
Sheffield, England
Patented 2000

Robert Sorby

The Robert Sorby ProEdge: Sharpening made simple

www.robert-sorby.co.uk

This type of toy is suitable for children over 5 years, but it contains small parts



Drill a hole 5mm diameter, 2.5mm deep in the top part of the body, this will hold a magnet. This position is for the head when in the normal position.

Now drill two holes 5mm diameter, 2.5mm deep for the arms, these are 180 degrees apart, one either side. Position given on the drawing. Using a wood file make a flat around the holes (shown in photo as black shaded area), this is so the limbs sit flat, the diameter of the arms is 15mm.



Sand and finish, part off the body to 50mm, ensure that the base is flat, this will ensure that the legs will stand square. Mark the positioning of the arms on the base of the body, so that the leg holes are inline with the arms.

Drill two holes 5mm diameter, 2.5mm deep, in the base, these will position the legs in line with the arms when in the normal position.



Leg manufacture

Two pieces of wood at least 38mm long, 19mm square. Turn down the wood to the profile in the drawing.



Clown MagFigure

Drill hole 5mm diameter, 2.5mm deep in the end of the wood, as shown in the photo/drawing.

Sand and finish, then part off. As the parted off face will be the leg bottom ensure it is a little concave, this ensures that it will stand even on the flat surface.

Arms construction

The wood required is 50mm square 50mm long.

Hold the wood in the chuck so the grain is running as indicated by the arrow, (shown in the photo), this is because we need the grain to run down the arms.



Mark the inside ring 25 mm diameter, on the end of the wood, and the outside ring 43mm dia.



Turn the wood to a diameter of 43mm. Drill a hole 25mm diameter, at least 25mm deep, not critical.



With a thin parting off tool, cut into the wood to a depth of 6.5mm, to achieve two rings 9mm wide. Just take off the sharp corners. Do not round the face, as we need a flat surface when the figure stands on the arms.

Sand and finish, then part off the two rings, and remount in the chuck to finish off the parted off inside face.



Now place the ring on the drawing and mark the cutting lines, insure that you have the wood grain running as shown on the drawing, cut the two parts from the ring. Sand the ends flat, mark the centre line on the ends, then drill (see drawing) the holes 5mm diameter, 2.5mm deep in the end, these will house the magnets.



Head Manufacture

A piece of wood at least 45mm long, 25mm square.

The detailed drawing gives a selection of face profiles, select the one you would like to make, and select the head shape for the face design, or design your own head and face, but make the head the length as given in the drawing, as it needs to be the same length as other limbs.

Drill hole 5mm diameter, 2.5mm deep, in the end.

Crow Valley
WOODTURNERS

invite you to a day with

Andrew Hall

Andrew Hall is a well-known turner on the UK circuit, perhaps best known for his turned wooden hats. Come along and be entertained and inspired by Andrew.

This demonstration is open to all interested woodturners and woodworkers.

Date: **Saturday 15th October 2016**

Venue: **Croesyceiliog CEC, The Highway, Croesyceiliog, Cwmbran, Torfaen. NP44 2HF**

Time: **10.00 am till 4.00 pm approx.**

Cost: **£12.50**

Contact: **Peter Bradwick on 07768 921109 or 01633 873640 – peterbradwick@btinternet.com**

Refreshments are available throughout the day





The holes drilled in the parts for the magnet should be a tight sliding fit. Put enough glue in the hole so that when the magnet is pushed into the hole, it is flush with the surface, and the glue bonds to the side and bottom of the magnet.

Care should be taken not to get any glue, resin or paint on the surface of the magnet as this will reduce the holding force of the magnets.

Painting

As this toy will be used in connection with children, the paint used should be food safe. I used an artist acrylic paint, suitable for children.

Spray with a clear lacquer. This can be done on the lathe, having a wood rod in the chuck, drill a hole in one end to hold a magnet, polarity of the magnet such that it will hold the limbs, with the limb in place lathe turning slowly and spray the part.



Monkey MagFigure

Polly MagFigure

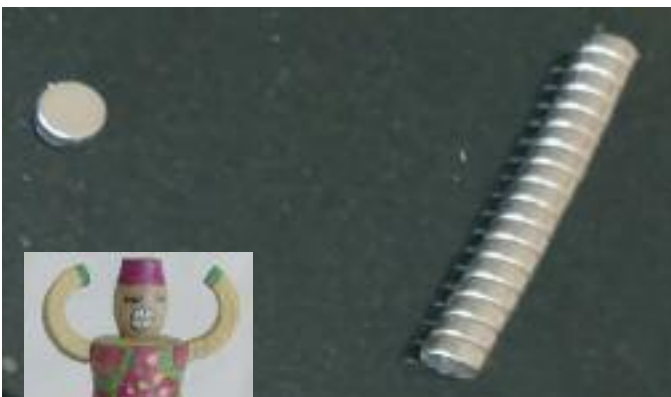
Strange MagFigure

Magnets and fixing

This type of toy is suitable for over 5 years old, but it contains small parts.

The magnets are very small, and so fixing them securely to the limbs is very important. A glue which bonds to metal and wood is necessary. Certain types of Superglue are not suitable, as they do not give a good bond to metal. Epoxy glue would be much better, be careful to select the best type of glue for metal and wood.

The magnets are a disk with north pole on one side and south pole on the other. Therefore it's important to position them so that one type of pole is on the body and the other on the limbs, if this is not done, the limbs will not attach themselves to the body.



Chatty MagFigure

It is very important that when mounting the magnet it is not below the surface of the wood and is not covered with glue or paint as this will reduce the holding force. The disk

magnets used are 5mm diameter, 2mm thickness. The magnets can be obtained in the UK from – www.first4magnets.com.

**Pepper Mills
Nutmeg Graters
Tools etc.**

**Sole distributor of
Cole & Mason
mechanisms and parts.
UK craft agent for
CrushGrind**

**Constable Woodcrafts
Tel/Fax 01206 299400
e-mail: brianfitzs@aol.com
www.peppergrinders.co.uk**

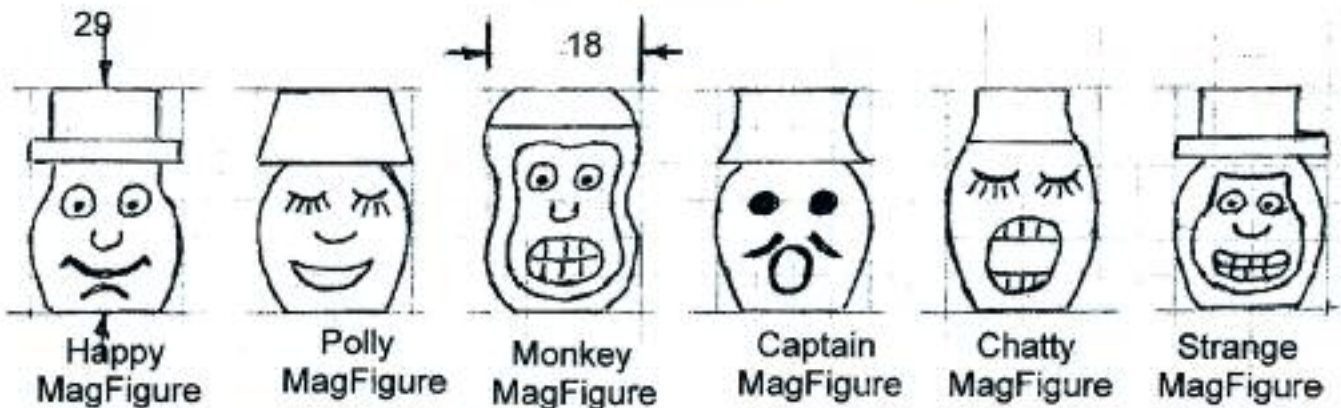
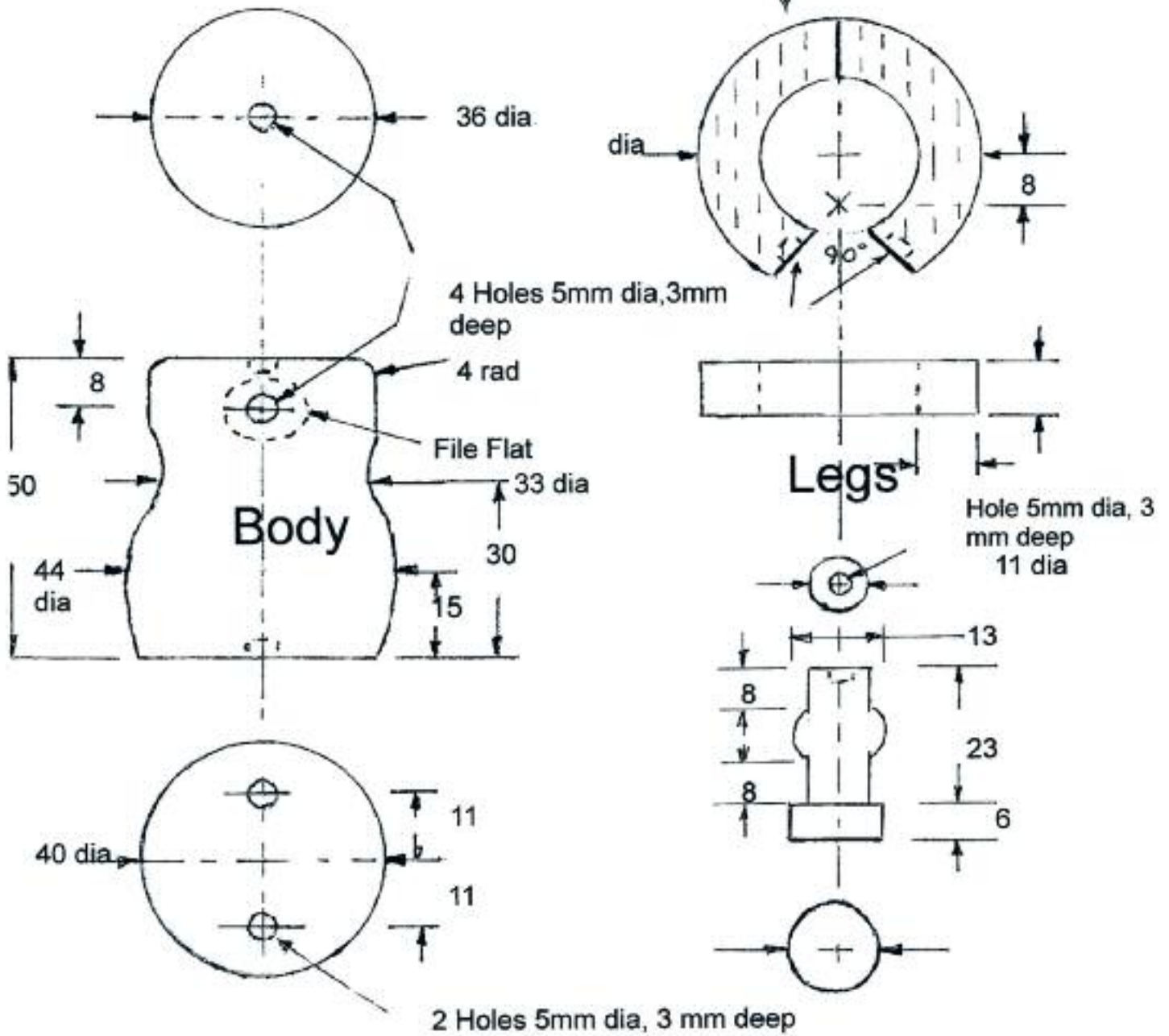
Body Parts For MagFigure Toy

Copyright © 2015 I.Salisbury

All Dimensions in mm

Wood Grain Flow

Arms



Some sample faces you can use to paint on the wood head

East Herts Woodturners introduce young people to Woodturning

John Leach

In 2007, the East Herts Woodturners were invited to demonstrate woodturning at the World Scout Jamboree. At that event many young people wanted to try woodturning but we were not able to let them. In 2010, the club was invited to an annual activity weekend for 14-18 year old Scouts and Guides at Gilwell Park near London. Gilwell Park is the home of World Scouting and its main activity Centre. At this event, known as Gilwell 24 (G24), the East Herts Team set up hands-on woodturning opportunities in a 80ft by 40ft marquee. Since then, they have organised hands-on woodturning at all subsequent G24 events, so 2016 was the 7th hands-on woodturning at G24s.



Ronnie Barker and Phil Steel receive words of advice from Paul Howard before the start of the sessions

Gilwell 24 is a 24 hour activity packed event with many activities for the young people to try. In addition to woodturning, the activities included climbing and abseiling, driving cars, rope making, circus skills, water sliding, bricklaying and many others. Although the event lasts from 9 am on Saturday to 9 am on Sunday, for safety reasons,



Part of the woodturning-base team at the briefing meeting before the start



The Master of the Worshipful Company of Turners watches as Paul Howard supervises a participant making a wooden item

the woodturning only operates from 9 am to 6.30 pm.

In addition to the hands-on woodturning sessions, there was a display of wood turned items and the AWGB South East Region Rep, Colin Smith, demonstrated woodturning. There was also the opportunity to purchase some wood turned souvenirs.

Prior to going on a lathe, each student was given brief safety training. After the safety instruction they were allocated to a lathe and, under the supervision of an experienced turner, made a small wooden item such as a whistle, a pen, a mushroom or a wand. When they re-joined their mates they proudly showed off their handiwork.



The woodturning activity organisers (John Leach, left and Mike Rothwell, right) with East Herts Woodturners Club Chairman (Dennis Day, 2nd from right) and the Turners' Company Master (Nicholas Somers, centre) and Past Master (Peter Gibson, 2nd from left).

In addition to the seven G24s and the World Jamboree, the East Herts Woodturners have organised or helped organise hands-on woodturning at four week long Scout Jamborees in Cambridgeshire (twice), Kent and Norfolk. They have also organised several hands-on woodturning events for local scout groups. Over this period, more than 2850 young people have experienced hands-on woodturning. None of this would have been possible without the support of many members from a number of clubs and several volunteer professional turners.

At Gilwell 24 this year, with 11 experienced turners each supervising a lathe, about 130 young people and their leaders experienced hands-on woodturning. In addition to the turners supervising training lathes, a dozen other people ensured the smooth running of the woodturning base. The activity was visited by the Master of the Worshipful Company of Turners, Nicholas Somers and a Past Master, Peter Gibson.

In the last few years many of these hands-on woodturning events have been organised by East Herts Woodturners on behalf the AWGB.

The East Herts Woodturners and the AWGB gratefully acknowledge the support of Axminster Tools and Machinery, Birchanger Wood Trust, Chestnut Products, Henry Taylor Tools, Staples, the Worshipful Company of Turners, Paul Howard, Phil Jones and the members of Cambridge and Chelmer Woodturning clubs as well as members of the East Herts Club.



AWGB South East Region Rep (Colin Smith) demonstrates Woodturning

AWGB Tutor Assessments

Since the 'Lets Teach Turning' DVD was released the association has run trial days to test the assessing process, then when the member's development team were happy with the process, it was opened to all members.



The person being assessed is given a time slot during the assessment day, this saves members having to hang around all day to be assessed. Each assessor will normally have four members to assess during the day. This makes best use of development funds.

To date, and I am writing this at the end of July, since I have been coordinating the assessment days 40 members have been accommodated. This shows how members have embraced this new training program.

At present I have 2 members in Scotland and 2 in Suffolk who will be assessed shortly.

There are another 3 members that I still have not been able to arrange dates for. This is because of the scattered nature of the members and to date I have not been able to generate any more members from their area's to make up a day. So if there are any members in the **Derby, Spalding, Lincs. or Hartlepool** areas please apply so that assessments can take place.

I apologise to those members still waiting and will contact those shortly to try and find a way forward.

Or contact:

John Montgomery - 01752 894083

e-mail johnmontgomery@awgb.co.uk

Don't forget to sign up

As mentioned before we are signed up to Giving a Bit.com. This means you can also sign up for free and every time you make an online purchase from a huge number of outlets including Amazon, John Lewis, Screwfix, Travelodge, to name but

a few the retailer will give us a donation. We have around 20 members from 3500 signed up so far and in April we received £20.17 into our account.

Imagine how much we could generate if more of you signed up! It's easy, go to the website, create an account and select AWGB as your chosen charity. Then simply sign into GivingaBit and then go to your store. You can also download a widget and then when you search in Google the outlets supporting GivingaBit are highlighted. It costs nothing and it's easy. Please sign up if you do online shopping.



New Hampshire Sheen Product & Gift Cards Available

Hampshire Sheen

Available in Original
& new High Gloss

Now comes in a larger
size and a new style tin.



New £10 Gift Cards



We have a large range of blanks



INDASA



Hope woodturning

Robert Dorby



Olivers Woodturning supports the AWGB



The Association of Woodturners of Great Britain www.awgb.co.uk

Ise & Nene Valley Turners

It has been a very successful year since this local community based club for woodturners was formed. It now has 30 fully paid up members that meet on the third Thursday of every month at the Kettering Rd Community Centre in Kettering NN15 8UG.

The Committee and members would like to take this opportunity to thank Kettering Borough Council, The Association of Woodturners of Great Britain and the National Lottery for the help and financial assistance they have given us over the last year that has helped to make the club such a success.

The club has a full and varied programme of visiting woodturners

throughout 2018 including our first 'full-day' on Saturday 9th October.

New members and visitors are always welcome to come along and see what we have to offer. If you are thinking about taking up the hobby of woodturning or are a woodturner please come along to one of our meetings, there are always members to share their knowledge and give advice. We are a friendly welcoming club that is open to all. We would love to see you. There is an entry fee for visitors of £7 but that includes free refreshments of the highest order.

Further full details from Peter Bond (01533 474835) or psbond@btinternet.com

Note from the editor

I would love to receive all your ramblings and tales, stories and tips, jokes and yarns and anything else you would like to write for me (as long as its suitable for publication of course). Don't forget to include photographs, illustrations and any supporting materials if applicable.

Send to: editor@awgb.co.uk or my address is on page 3

AWGB Merchandise

Lapel Badges
Brass & enamel
£3.50 p&p included



Cloth Badges
For sewing on smocks etc.
£4.50 p&p included



Windscreen Sticker
£1 plus sae
(standard letter rate)



Tie
£16.00 p&p included

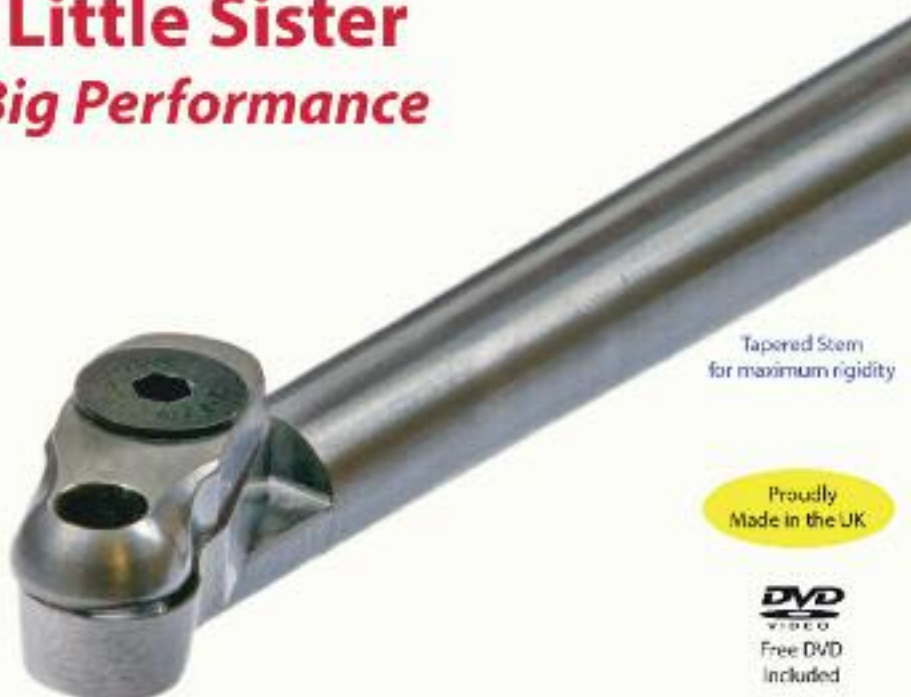


**All available from the
AWGB Secretary
(details on page 3)
Make all payments to AWGB**

Little Sister Big Performance

Little Sister is a mini hollowing tool based upon the highly successful Brother System 2 range. Designed with the small/mini lathe turner in mind.

Compact fixing screw
Hollow through 13mm
openings with ease!



Tapered Stem
for maximum rigidity

Proudly
Made in the UK

DVD
VIDEO
Free DVD
included

Talk with your
stockist today

hamlet
CRAFT TOOLS

sales@hamletcrafttools.com

www.hamletcrafttools.com

+44(0)1142321338

3 configurations available



An interchangeable scraper (ref H5187B) also available

Highlighting a local initiative

Dave Smith

This initiative involving Wessex Woodturners who meet at Yandles and Somerset Woodturning Club who meet at Bridgwater, is bit different from the norm.

In April a member of the Somerset Club asked if members could make display stands for wigs as the stand his wife had been given following treatment at the Beacon Oncology Centre at Musgrove Park Hospital Taunton was a less than appealing, ugly looking plastic item.

This idea was enthusiastically taken up by members of both Clubs and a large selection of styles, wood and designs were made, so much so that they were split and the idea was extended to Yeovil District Hospital where members and family of several members have also received treatment.

In June, 15 of the stands were presented to the Beacon Centre at Taunton.

On 4th August Wessex Woodturners presented a similar number to Sue Sturgess at South Petherton Hospital

A member and his wife of the Wessex group have both undergone treatment at Exeter Hospital and Club members are now being asked to extend the initiative further on their behalf.



A selection of stands with Nigel Maddocks, Andy Date and David O'Callaghan members from both Clubs



Sue Sturgess from South Petherton Hospital and Paul Vane, treasurer of Wessex Woodturners

Well done Bernard!

Bernard Bunn (left) receiving his AWGB Approved Tutor badge from Paul Hannaby (right) on 11 June 2016. Bernard is a member of The Kennet and Avon Woodturning Club based in Trowbridge Wiltshire.



CALL FOR ENTRIES: Materials: Hard + Soft International Contemporary Craft Competition & Exhibition

The Greater Denton Arts Council announces the opening of its 2017 Call for Entries for the 30th Annual Materials: Hard + Soft Contemporary Craft Exhibition. This exhibition celebrates the evolving field of contemporary craft and the innovation of artists who push the boundaries of their chosen media. Recognized as one of the premier craft exhibitions in the United States, this year we are thrilled to be partnering with the National Endowment for the Arts to expand this national exhibition to now include international artists. Approximately 70 works will be selected for exhibition by juror JoAnn Edwards, Executive Director of the Museum of Craft and Design in San Francisco, California. Of the works selected, Juror Awards in amounts of \$1000, \$750, \$500, and \$250 will be awarded.

Online submissions and prospectus available at dentonarts.com/materialshardandsoft

SUBMISSION DEADLINE | September 30, 2016

2017 EXHIBITION | February 4 – May 6, 2017 at the Patterson-Appleton Arts Center in Denton, Texas.

Inquires may be directed to the Arts Council at (940) 382-2787 or exhibit@dentonarts.com

New Generation CBN Grinding Wheels for 6" & 8" Grinders

The latest generation of CBN grinding wheels is now available to woodturners, giving fast, fine, cool sharpening from wheels that need no dressing and which will last and last. Available only from The ToolPost, in a range of widths, diameters, grit grades and configurations to suit most popular grinders, from stock. For example:

150 x 40 wide standard wheels from £99.50

200 x 40 wide standard wheels from £134.50

The ToolPost

Unit 7 Hawksworth, Southmead Ind. Park, Didcot, Oxfordshire OX11 7HR
www.toolpost.co.uk 01235 511101

Sharing expertise

CHESTNUT PRODUCTS
first for finishes

Used by woodturners of all abilities throughout the UK and the world, the Chestnut Products range of top quality finishes gives outstanding results every time; whatever you are making and whatever your preferred finishing system there is bound to be something in our range to meet your needs.

See your local stockist for more information or for a catalogue/price list contact us at:
Chestnut Products
PO Box 536,
Ipswich IP4 5WN
Tel: 01473 425 878 Fax: 01473 431 096
www.chestnutproducts.co.uk
mailroom@chestnutproducts.co.uk
Stockist enquiries welcome

- Cellulose Sanding Sealer
- Finishing Oil
- Lemon Oil
- Acrylic Gloss Lacquer
- Acrylic Sanding Sealer
- Safety Cloth
- Spirit Stain
- Acrylic Lacquer
- Burnishing Cream
- Cellulose Thinners
- End Seal
- Friction Polish
- French Polish
- Melamine Lacquer
- Wood Wax 22
- Steel Wool
- Polishing Brushes
- Shellac Sanding Sealer



Member Training Workshops

Mark Hancock

Unit 365, Springhill, Salters Lane, Lower
Moor, Pershore, Worcestershire WR10 2PE

Saturday 29th October 2016

Intermediate/Advanced
Techniques of Hollowing a Closed Form

Jay Heryet

Croesyceiliog Community Education
Centre, The Highway, Cwmbran, Torfaen,
NP44 2HF

Saturday 19th November 2016

Intermediate
Thread-Chasing

Visit the AWGB website: www.awgb.co.uk and download an application form and send to the coordinator shown on the form.

Or complete a 'Training Workshop Application' Web Form.

Only fully completed application forms will be considered.

Stiles & Bates

The Woodturning People

Shop

Mail Order Catalogue

Website

Upper Farm, Church Hill, Sutton, Dover, Kent. CT15 5DF

Tel: 01304 366 360

**www.stilesandbates.co.uk
sales@stilesandbates.co.uk**



Make a CrushGrind Peppermill

James Pearson

This is my method for a plain cylindrical standard shaft type. It is not THE method, but it is my simple method No.1.



A few weeks ago, I was given a lump of teak wood from a lady whose late husband had started to make it into a tall table lamp, but unfortunately it never got completed. It was 110mm diameter 500mm tall, with a conical end, and with a 10mm hole bored in from the side and up the centre for the flex. It also had some cracks, one running the full length, right into the central hole.

I reckoned that with care and a bit of luck, I could get six peppermills out of it.

The first job was to do a bit of sanding along the site of the cracks to fill in as much as possible with dust and then soak them with CA glue. It was then cut into two billets, and the conical end removed. Each billet was then split into three, the first cut along the line of the major crack, then trimmed and the ends squared on the belt sander.



I could just scribe a maximum 50mm diameter circle on each end of the billets, and I reckon that for the standard CrushGrind mechanism, 50mm is the absolute minimum diameter useable. The centres were marked with a bradawl and the first billet mounted between centres. Using a spindle roughing gouge, it was turned to a cylinder, then sanded from 120 through to 400 grit, and given a coat of food safe oil.



The cylinder was then mounted securely in a four jaw chuck, ensuring that it ran true.

A 23mm deep hole was bored with a 45mm diameter sawtooth forstner bit. This hole was continued with a 35mm sawtooth bit to approximately 125mm depth from the end of the billet.

NOTE: It is important to make sure that the depth of this hole is at least 10mm short of where you intend to have the joint between the base and the top of the mill.





Certificate in Woodturning

Introduction

The Certificate in Woodturning is designed to provide a training programme that covers all the basic skills to be competent at woodturning.

The Certificate is aimed at candidates with little experience, or the more experienced with no formal training of woodturning. Therefore the Certificate is primarily a training programme of the basic skills with assessment criteria.

The Qualification comprises:

- Training units
- Multiple choice question assessment at the end of each unit
- Practical assessment

Training Units

- Unit C 101 Workshop Safe Working Practices
- Unit C 102 Tools and Equipment - Maintenance
- Unit C 103 Wood Technology
- Unit C 104 Spindle Work
- Unit C 105 Faceplate Work
- Unit C 106 Finishing

The **'Training and Assessment Logbook'** is issued to the candidate on commencement of the award to record the training and assessment. When complete the training and assessment is verified by the AWGB.

On successful completion the Association of Woodturners of Great Britain and the Worshipful Company of Woodturners will award the **'Certificate in Woodturning'**

Six day Certificate in Woodturning Course...

Open to AWGB members only.

Venue	5 Well Bank, Billy Row, Crook, COUNTY DURHAM, DL15 9SP		
Tutor	Andrew Hall		
Dates	February 18th and 19th 2017	March 18th and 19th 2017	April 1st and 2nd 2017

The course is part-funded by the AWGB and WCT with the AWGB providing one third, the WCT one third and the candidate provides the remaining third. We expect four candidates per course each paying £150.

Certificate in Woodturning

Training and Assessment Logbook



The Worshipful Company of Turners

Candidate Name.....

AWGB Registration Number.....

01/14



For further details and application forms contact...

Peter Bradwick

e-mail development@awgb.co.uk Tel 01633 873640

You can, if you like, add a decorative bead at the joint line.

Then part off with a thin parting tool. Remember, 10mm minimum beyond the end of the 35mm hole.

Remove the top section from the chuck and replace with the reversed main body, making sure the end is square, running true, and with the centre accurately marked.



Bore a 35mm hole to meet the one previously bored from the bottom. The reason it is important to stop short of the hole bored from the bottom, is to ensure the hole at the joint is absolutely central. In my experience long holes bored on the lathe are not always absolutely true.

Form a groove, about 5mm wide and 3mm deep, to locate the mechanism clips. You can buy a special tool from one of the tool suppliers to do this job. Or you can use a home made tool as I did.



You can form this groove before the bottom is parted from the top, but the overhang is longer and the body more easily displaced in the chuck.

Sand the bore and give it a coat of food safe oil.

Put the top section in the chuck, making sure it is running true, and form a 35mm diameter spigot to fit accurately the 35mm hole in the main body. You can also add another decorative bead if you wish. If your centres are fractionally out, the beads will help to hide it!!



Bore a 22mm diameter hole, 40mm deep, then form a 5mm wide groove to accept the shaft driver locating clips.

Part off the top, reverse mount in the chuck, and square off the end. You can add a further bead if desired. Drill a shallow hole in the top which can be filled with a black disk, (or white for salt).



You could even add a little bit on monetary value to your mills!





p.s. You could add another bead at the very bottom of the mill. I could not risk it as the wall thickness here is only about two millimeters.

Simple Method No.2.

This is very similar to No.1, except, only rough turn the outside before boring the inside, leaving the join a tight fit. Finish turning the outside, and apply the finish of your choice. Then ease the joint, and finally insert the mechanism.

I think No.1 method is best as chucking is easier.



Insert the mechanism into the main body, pressing it in by winding in the tailstock, making sure it is inserted square.

If your tailstock has a small diameter, make up a 40mm diameter wooden spacer with a central hole for the stem.

You should be aware that once the mill mechanism is inserted and the clips located in the groove, it is virtually impossible to remove it. I have, on occasion omitted the groove, and held the mechanism in with a couple of small stainless steel screws. Just make sure they are stainless as the salt will corrode them.

Before inserting the top driver part, check the length of the driving shaft, and cut to size, tapering the cut end.




Press in the top driver part using the tailstock, fill the body with pepper, or salt, and add seasoning to your fish supper!

As stated at the beginning, this is a simple way to make a peppermill, Boring the 35 mm hole right through, gives lots of volume for the contents, but If you wish to shape the body, you may wish to limit the 35mm hole to about 55mm deep and continue with a smaller diameter. Just remember to match the top spigot to the hole diameter.

This pair will go to the lady who gave me the lump of teak. Her late husband obviously intended the table lamp to be a straight up and down shape, so I hope she appreciates the straight up and down salt and pepper mills.

Ashley Iles
woodcarving & turning tools
made in the old tradition

Precision Made Woodturning Tools



Ashley Iles, Solly Street c.1958

Send £1.00* postage for our 49 page Catalogue and 2014 Price List

*£3.00 Mainland Europe and Eire, £4.50 USA and Rest of the World

Ashley Iles (Edge Tools) Ltd, East Kirkby, Spilsby, Lincolnshire PE23 4DD
Tel: 01790 763372 Fax: 01790 763610
Email: sales@ashleyiles.co.uk
www.ashleyiles.co.uk

What is an AWGB Seminar?

Dave Atkinson, Chairman, AWGB

That was a question that came to my mind in early 2005 when there was an editorial by Mark Baker in the Woodturning magazine, discussing the concerns in the AWGB at the time about the lack of take up of places for the 2005 Seminar at Loughborough. I looked on the AWGB website and could only find out that it was something where everyone had a good time. I wrote to Mark about this and it generated some further comments from the late Tony Witham and other turners. To cut a long story short I joined up and went to my first Seminar in 2005.

What an eye opener it was! I've been to every one since – as a punter in 2007 and as one of the workers from 2009 onwards.

But it still remains the AWGB's best kept secret! As a committee member for 7 years I've often wondered why people don't attend this fabulous weekend.

I think the name itself puts many people off - online dictionaries define it as "a conference or other meeting for discussion or training" or "a group of college or university students who are involved in advanced study or research under the guidance of a professor or tutor and who meet regularly for discussions or exchange of findings". They don't help much, but it is a meeting, you will learn something, you will be inspired by experts in our craft, but most of all you will have fun!

The weekend starts with arrivals on Friday morning, and assuming you are staying on site, finding your room and unpacking. Followed by a welcome cup of coffee you will start chatting with old friends and making new ones. A bit daunting perhaps if you've come on your own but woodturners are a friendly bunch and if you're not sure of what's what, ask one of the organisers – we all wear hideous orange polo shirts (it's a tradition!). After lunch we have the opening ceremony, introduce the team and then we're off and running with a choice of five demonstrations to go to. After a mid-afternoon break it's time to watch another demo. We open the instant gallery and that concludes the arranged activities for day 1. Friday evening is free for dinner, a drink or two in the bar and a time to chat to old and new friends.

After a good breakfast there are five demonstration sessions with a choice of five presenters in each session along with three or four masterclasses. The day finishes with an interesting review of the instant gallery by one or two of the demonstrators. On Saturday evening we have an informal dinner followed by (short!) speeches and an auction of donated pieces. The auction raises funds for the AWGB's member development programme.

Sunday morning concludes the weekend with two more demonstration sessions and the closing ceremony.

In addition to all this we have a raffle and superb trade stands where you can spend all your savings, and more!

The Seminar (and we can't think of a better word) is designed to meet the needs of the AWGB members, the majority of whom are amateurs, turning for pleasure in sheds across the UK and overseas.



The next Seminar takes place on 5th to 7th October 2018. It will cost around £400 which includes your accommodation, meals and access to all the demonstrations and trade areas. It's great value and lots of fun – it's your turn to be inspired. Start saving now!





Member Training Programme

Hands-on Master Class Weekend

Beginning an Artistic Journey in Woodturning

Nick Agar and Jay Heryet

When: Saturday 10th December and Sunday 11th December 2016

Where: Max Carey Woodturning Trust, The Mill, Portishead, Bristol

The goal of this course is for students to take their woodturning imaginations to new heights while learning about surface enhancement on turnings.

You will have an introduction to aspects of design, form and proportion for enhanced wood-turned projects and create a canvas for texture, colour and surface designs that includes the simplicity and beauty of wood itself.

The course will stimulate the turner's instincts to develop their creative potential.

This course is open to students who have an understanding of tool use and some hours at the lathe.

The course is **free** to AWGB members. However, a donation to the AWGB would be appreciated. For members who wish to stay overnight there is a 'Travelodge' close by.

The closing date for applications is **1st September 2016**. The course will be limited to 12 members. If oversubscribed there will be a ballot for places.

Application forms are available from <http://www.awgb.co.uk/documents/> - Training Workshop Application

**Association of
Woodturners**
of Great Britain



**Development
and Training**

Youth Training Workshops

Andrew Hall

5 Well Bank, Billy Row, Crook,
County Durham DL15 9SP

1st October 2016

Workshop Health & Safety
Various Projects and techniques

John Brooks

The Village Hall, Wadebridge Road,
St Mabyon, PL30 3BQ

29th October 2016

Workshop Health & Safety
Various Projects and techniques

Applications for Youth Training Workshops to

Ron Caddy e-mail: acorncrafts@tiscali.co.uk Tel no: 07903 313065

or visit the AWGB website: www.awgb.co.uk

KEBAB TURNING

David Springett



Here's an idea I've had for years but I don't really know how it can be used. I'm looking for some help.

It's quite simple. Laminate 3 pieces of wood, dark, light, dark. I've used walnut with Pau Amerello as a good light contrast. Here each piece is 18mm wide by 6mm thick [and 12cm long] so that the end section of the laminate will be an 18mm square. [Photo. K01] I know it's small but there's no reason why it cannot be made larger. Just keep to the proportions about the same.



K01. The blank glued and clamped.

When the glue has dried mark diagonals at both ends. Carefully centre punch at the marked positions to ensure that, when it is set between centres, the blank runs on centre. Turn the blank to a clean, parallel sided cylinder. Photo. K02. Next hold the blank in a three jaw chuck and drill a hole, centrally through. Photo. K03.

For this particular blank I have used a 6mm drill and I have made sure that I have dowel of matching diameter.

Select a thin parting tool to reduce waste [photo. K04] and begin to part off 6mm wide discs. Photo. K05. It is important



K02. Turning the blank round.



K03. Drill into the blank.



K04. A thin parting tool.



K05. Part off 6mm wide discs

Instructor Training

‘Let’s Teach Turning’ Course

We have designed and written the “Let’s Teach Turning” e-learning course to give turners who give tuition some assistance in teaching the basics of woodturning at training workshops, club events such as hands on evenings or taster sessions at Scout jamborees.

The course takes around 2.5 hours to complete and we expect people to do it in stages over a few days or even longer. The e-learning CD will be a useful reference to revisit time and time again.

On completion of the self paced course, AWGB members have the opportunity to attend an assessment day where their teaching abilities will be assessed and if successful they will be awarded

the AWGB Approved Tutor badge. Completion of the course is a pre-requisite to attending the assessment day.

Assessment days will be arranged by demand with dates announced on the website and future editions of Revolutions. The assessment will take approximately 1 hour, and candidates will be required to deliver a lesson, followed by feedback with a question and answer session.

The course is designed for use on a Windows PC, and you can download the e-learning course on the AWGB website for free or purchase a copy of the CD for £16 including postage.

For further information, please contact the Development and Training Officer. Contact details are on the inside of the front cover.



that the parting tool cuts these blanks at 90 degrees to the axis of the lathe and that each cut disc, front & back, has a clean, square face. Whilst the discs are parted, support the end with a revolving centre.



K06. Sand the faces of the parted discs.

Sand both faces of each parted disc. Photo. K06.

The discs and the dowel on which they will be 'Kebabed' can be seen in photo. K07.



K07. The parted discs waiting to be 'kebabed' onto the dowel.

Take each disc and slide it onto the dowel checking that they butt up without gaps. Make adjustments where necessary. The discs can be aligned in a variety of patterns, a chequer board as in photo. K08, a spiral as in photo. K09, a Vee as shown second from the left in photo. K15, or any variation that you can imagine.

Glue the discs in place on the dowel, in the chosen pattern, making sure the joints are tight. Photo. K10. Lock in place with masking tape until dry.



K08. A chequer board pattern.



K09. A spiral pattern.

When the blank has dried it can be glued between two drilled parts. Photo. K11.



K10. The discs glued in place on the dowel.



K11. Set the blank between two drilled ends and glue in place.



W.L. West & Sons Ltd
Selham, Petworth, GU28 0PJ
t: 01798 861611 f: 01798 861633

- Hardwoods
- Wood finishes
- Australian Burrs
- Exotic Timbers
- Woodturning Blanks
- Woodturning Courses (see website for dates)
- Woodworking Machinery
- Woodworking Tools
- Fencing, Gate & Decking Products
- Bespoke Garden Furniture

**Timber, Tools & Machinery
for D.I.Y • Carving
Woodturning • Furniture Projects**

shop@wlwest.co.uk

Off A272 Midhurst to Petworth road opp The Halfway Bridge Inn

RECORD POWER
BLUESBERRY • GRAPE • APRICOT

Open: Mon-Fri 8-5 & Sat 9.00-1.00pm

www.wlwest.co.uk



K12. Apply pressure from the tailstock whilst the glue dries.

Pressure is applied from the tailstock whilst the glue dries. Photo. K12.



K13. Turn the blank round.

Carefully turn the blank. Photo. K13.



K14. Sand and polish.

Then sand and polish. Photo. K14.

I have used this decoration on pens and bobbins. Photo. K15 shows a couple of turned pieces with the disc sections emphasised by turning beads but what can YOU do with this idea? There are variations...instead of two colours try 3..light, medium and dark...or maybe more. Are there more patterns that can be produced? Can it be used in larger pieces?

What I really would like to see are finished turned examples from other turners rather than suggestions. It's easy to try, won't cost much in time or money so why not have a go?



K15. Various patterns. The second from the left has a Vee pattern and is laminated from 3 different coloured parts. Note that the disc sections are emphasised by turning beads.

Note from the editor

I look forward to receiving your ideas, photos and designs as David has suggested.

You can send them to me via email or post my information is on page 3.

Is there something for Christmas maybe ...

A Thought ...

I am trying to make friends outside of Facebook while using the same principles.

Therefore every day I walk up the High Street and tell passers-by what I have eaten, how I feel at the moment, what I have done the night before, what I will do later, how and with whom.

I give them pictures of my family, my dog, and of me gardening, eating, taking things apart in the garage, watering the lawn, supermarket shopping and my selfies. I also listen to their conversations, give them the "thumbs up" and tell them I like them.

It works just like Facebook and I already have five people following me: Two police officers, a private investigator, a priest and a psychiatrist.

Reflections on "Let's Teach Turning" and Tutor Assessment

Peter Harper

One aim of the AWGB is to 'encourage and participate in the development of training standards and educational facilities for turning'. The Association launched a CD, 'Let's Teach Turning', in 2015. This course was to give assistance to turners who give tuition by teaching the basics of woodturning at training workshops and club meetings. The course is intended to be followed by a Tutor assessment.

The initiative appealed to me. I started woodturning eight years ago, though I had made furniture as a hobby for some time. I paid for tuition, which got me started and joined my local club. Keith Rowley's excellent book, 'Woodturning, A Foundation Course' was a great help and I practised the techniques and made the projects. Demonstrators at Club meetings were interesting and occasionally inspiring.

However, one of the roles of clubs must be to coach basic turning. The major need locally is to provide the potential turner with the basic skills and encouragement to invest time and cash in the hobby. Once the basics are learned novice turners can then acquire more complex skills from the multitude of books, magazines, demonstrations, courses and You Tube. If no-one leads club basic training and 'hands on' sessions, there is little planning, coherence or direction. Multiple suggestions from members about techniques only confuse issues for the novice. To criticise local training is easy but tuition in practice is more difficult, as I found out. After developing some woodturning skills I started some 'taster sessions' on club evenings and in my workshop for 'hands on' experience for aspiring turners but I found the teaching difficult.

I decided to enrol for the Tutors Assessment, contacted the organiser, got a date and started preparation. 'Let's Teach Turning' is an example of how to impart the basics of woodturning to a novice turner. It provides structure to the teaching process, breaking the subject down into simple sections. In addition it deals with important topics such as Health & Safety and Child Protection. It is easy to follow and takes 2 to 3 hours to complete. The review of the CD and reading the accompanying notes was straightforward.

The rest of the process was more challenging. Writing the teaching plan took thought. Yes, I can turn out a simple turning routinely but more difficult was ensuring the simple explanation to the student. The CD recommends talking to yourself in a mirror to get the explanations simple and correct. I practiced the patter talking to myself walking on the Black Mountains, hiding myself from observations of incipient madness! This process made me reconsider my turning and the explanation necessary. I kept asking myself, "Why do I do it this way"?

Simple explanations are not all that is necessary. The session needs to be paced correctly to keep the student interested. Furthermore the student is not a passive recipient. He/She must be involved. It is a tutorial not a didactic lecture. I found the question and answer format worked well and also checked understanding.

The assessment was at the Max Carey Woodturning Trust in Portishead. This is a well resourced facility. The assessors were

very friendly which took some of the pressure off. The 'student' was perhaps not as green as one supposed but was easy to work with. The time went rapidly but there was no compulsion to finish with a perfect turning from a skilful novice, but rather to have moved the learner some way along the path of understanding how to turn safely and enjoyably. The post-lesson feedback was positive and helpful.

Teaching is not intuitive. We all have memories of good and bad teachers from our time in formal education. Club members willing to teach will find this course is designed to support, encourage and coach them too. The tutor's role is not for everyone. I fully understand the reticence of some about performing in public with the potential embarrassment and criticism that it can engender. However clubs need a defined basic course for our club evenings and workshop tutorials. There are members in clubs with a wealth of practical skills and who are hesitant to talk but these turners need to be involved too.

I wish to thank sincerely all those who organised and ran the assessment day. It was a very positive experience and I encourage those thinking of the assessment to try it. They will benefit, future novice turners certainly will, clubs can use the tutor to their membership's benefit and the AWGB will develop a resource to enhance their aims.

A Reminder...

The AWGB offers members the following benefits

- ❖ Membership of a National Body dedicated to the promotion of woodturning and the interests of all woodturners
- ❖ A training programme offering a range of support to assist members improve their capabilities
- ❖ Grants to cover a range of turning activities including provision of equipment, including loan lathes – see grant scheme below
- ❖ Opportunity to join over 120 active clubs throughout the UK giving fellowship support and advice
- ❖ Quarterly newsletter full of useful and interesting information
- ❖ Discounts at a wide range of suppliers
- ❖ Free listing on the website for members offering demonstrations, tuition, commissions (NB we expect anyone using this service to have the appropriate insurance cover in place)
- ❖ Opportunity to have you website linked on the AWGB website
- ❖ The help and fellowship of both amateur and professional members
- ❖ Opportunity to attend displays of members work at major exhibitions and shows
- ❖ Opportunity to attend a major international seminar every two or three years
- ❖ Opportunity to attend regional demonstrations and activities run by our
- ❖ Support for members from our regional representatives
- ❖ Access to a comprehensive and cost effective insurance scheme for Public Liability and All Risks insurance cover for all clubs

Mark Hancock Training Day

Some photographs from a recent Training Day with Mark Hancock those taking part were Michael Johansen, John Warner, Dennis Wake and Mike Wilkinson.



Stop Press

We, (the AWGB) needs a volunteer to take up the role of Northern Representative.

Contact a member of the Executive if you think you can help in this role.

We are a friendly bunch

Double Ended Bowl Gouges

Perfect with our Multi Handles



**Fingernail
Profile**

For the woodturner who wants more for less
-and who doesn't-
these superb bowl gouges from premium
toolmaker Henry Taylor are the perfect answer.
Offering two alternative grinding styles -one
on each end. These Sheffield-made gouges
offer maximum versatility when paired with a
system handle such as our new **Multi-Handles**.
Available in 1/4", 3/8" and 1/2" flutes from only
£41.94 - talk with your favourite stockist.



**Standard
Profile**

For the advanced turner we also offer these tools
featuring the special grinds developed by renowned
Irish woodturner **Glenn Lucas**, and which also feature in
our signature bowl gouge range.



hamlet
CRAFT TOOLS

Hamlet Craft Tools
www.hamletcrafttools.com
sales@hamletcrafttools.com
+44(0)114 232 1338

Available through
Henry Taylor
and
Hamlet Craft Tools
stockists worldwide



Henry Taylor (Tools) Limited
www.henrytaylortools.co.uk
sales@henrytaylortools.co.uk
+44(0)114 234 0282

At last, an affordable Multi-Handle

Now available from your **Henry Taylor** or **Hamlet** stockist

4 sizes to cater for your needs - 9", 13", 17" & 24"

Henry Taylor (Tools) Limited
www.henrytaylortools.co.uk
sales@henrytaylortools.co.uk
+44(0)114 234 0282



hamlet
CRAFT TOOLS

Hamlet Craft Tools
www.hamletcrafttools.com
sales@hamletcrafttools.com
+44(0)114 232 1338

Radial clamping of tool
Simple but effective

Textured handle grip
Safe and secure



Proudly
made in UK

Ideal to use with our double ended gouges