

Revolutions

THE NEWSLETTER OF THE ASSOCIATION OF WOODTURNERS OF GREAT BRITAIN

Issue No 116

March 2016

Jumping Frogs

Stuart Mortimer day

Wizardry in Wood

Andy Coates day

Beer and Woodturning



www.awgb.co.uk

A Company Limited by Guarantee - Company Number 8135399

Registered Charity Number 1150255

Corporate Members of the AWGB

For full information refer to previous copies of Revolutions or the AWGB website

Allan Calder's Sandpapers Ltd

Supplies high quality sanding abrasives of many types
01538 387738

Ashley Iles (Edge tools) Ltd

Woodturning and carving tools.
01790 763372

Auro UK

Natural Paints, wood finishes and treatments.
01452 772020

Axminster Power Tool Centre

Tools, finishes and woodturning accessories.
01297 630800

Chestnut Products

Quality wood finishes with emphasis on products for woodturners.
01473 425 878

Classic Hand Tools Ltd

Hand and power tools, books, DVDs, courses.
01473 784983

Crown Hand Tools Ltd

Range of fine woodworking handtools.
01142 612300

English Hardwoods

English Hardwoods.
07979 251497

Exotic Hardwoods UK Ltd

Quality exotic hardwoods.
01298 815338

G & S Specialist Timber

Suppliers of timber, tools, lathes and accessories.
01768 891440

Goulden Hardwoods

Air dried English hardwoods in slab or round waxed blanks.
07891 592067

GPS Agencies Ltd

Alternative ivory, horn and black ebony.
01730 233366

Henry Taylor (Tools) Ltd

Woodturning and woodcarving and woodworking tools.
0114 234 0282

Hope Woodturning

Woodturning tuition, demonstrations, tools and accessories.
01206 230694

ISCA Woodcrafts

Timber, Chestnut products, abrasives. Mail order.
01633 810148

John Davis Woodturning Centre

Timber, Machinery, Woodturning Tools and Craft accessories. Tuition.
01264 811070

Lovell Workwear Ltd

Protective smocks & aprons. Can be personalised.
02920 598327

Max Carey Woodturning Trust

A registered charity educating the public in woodturning.
07976 402960

Mirka (UK) Ltd

Surface finishing products and tools including abrasive discs, strips and rolls. Power tools and accessories.
01908 866100

Bob Mortimer Woodturning

Woodturning services for joinery, building and restoration, furniture and Cabinet makers.
01889 578838

Olivers Woodturning

Woodturning tools, finishes, blanks and on-line woodturning club.
01622 370280

Robert Sorby Ltd

Tools, lathes, and accessories.
0114 225 0700

Rustins Ltd

Wood finishes, decorating products, sealers.
020 8450 4666

Snainton Woodworking Supplies

Everything for the woodturner.
01723 859545

Southern Filters Ltd

Workshop supplies including Mirka Abrasives, Abranet and Q-silver Air Fed Masks.
01297 33860

Stiles & Bates

Comprehensive Woodturning Supplies since 1996.
01304 366360

T&J Tools

Abrasives and sharpening products.
07973 576554

The Toolpost

One stop resource for craftsmen and women around the world.
01235 511101

Turners Retreat

Complete range of woodturning tools and courses.
01302 744344

W.L.West & Sons Ltd.

Timber, Machinery, Turning and carving tools, accessories, books and woodturning courses.
01798 861611

Woodturning Magazine (GMC Group)

Best selling magazine for woodturners. Suppliers of books, DVDs & magazines
01273 402871

Yandle & Sons Ltd

Everything for the woodturner.
01935 822207

Revolutions

**Copy deadline for
the next edition of
Revolutions
1st May 2016**

Front Cover

**Making a spiral hollow-form was
demonstrated by Stuart Mortimer at
the Members Training Day**

See page 6

DATA PROTECTION ACT

Your personal details are held on computers belonging to Executive Committee members. Your details are held purely for the use of the Association and are not passed on to any third party. If you object to your name, address, telephone number and e-mail address being held in this manner then please contact the Secretary.

The AWGB is a Company Limited by Guarantee and a Registered Charity. It is administered by a group of elected Trustees who are also Directors of the Company. The Trustees meet at least twice each year and at the AGM. When they meet together they are known collectively as the "The Executive". Additionally, there are a number of people who assist the Trustees in their duties. These people are not elected and are known as "Volunteers".

TRUSTEES OF THE EXECUTIVE

President

Ray Key
The Firs, 53 Weston Road,
Bretforton, WR11 7HW

Chairman

Andy Coates
14 Newson Avenue, Mutford,
Beccles, NR34 7UN
01502 476332
chairman@awgb.co.uk

Vice Chairman

David Atkinson
87 Whirley Road,
Macclesfield, SK10 3JW
07810 648344
vicechair@awgb.co.uk

Secretary

Sam Webber
Serendipity, Hawthorne Close,
Grateley, Hampshire, SP11 8JL
01264 889784
secretary@awgb.co.uk

Treasurer

Jeff Belcher
Nant Ceiriog, Watery Lane,
Monmouth, NP25 5AT
07798 746296
treasurer@awgb.co.uk

Membership Secretary

Ryan Davenport
30 Garendon Road
Coalville, LE67 4JA
07983 630898
membership@awgb.co.uk

Webmaster & Data Manager

Paul Hannaby
Windrush, High Street,
Drybrook, GL17 9ET
01594 544417
webmaster@awgb.co.uk

Development & Training Officer

Peter Bradwick
183 Llantarnam Road,
Cwmbran, NP44 3BG
01633 873640
development@awgb.co.uk

Trade & Business Liaison Officer

Russell Gibbs
121 St George's Avenue
Daisy Hill, Bolton, BL5 2EZ
01942 811169
trade@awgb.co.uk

Mr Mike Glover
12 Grosmont Grove
Hereford, HR2 7EG
01432 378205

mikeglover@awgb.co.uk

Newsletter Editor

Sheila Hughes
49 Essex Street
Newbury, RG14 6QR
01635 45930
editor@awgb.co.uk

REGIONAL REPS

Scotland

David Willcocks
91a Easter Bankton
Livingston, EH54 9BE
07738 169561
scotrep@awgb.co.uk

North

Russell Gibbs
121 St George's Avenue
Daisy Hill, Bolton, BL5 2EZ
01942 811169
northrep@awgb.co.uk

Midlands

Peter Carless
20 Packwood Lane,
Coventry, CV4 8AY
02476 460749
westernrep@awgb.co.uk

South East

Brian Partridge
Homeside, Lady Lane,
Hadleigh, IP76AF
01473 828489
serep@awgb.co.uk

South West

John Montgomery
150 Cleeve Drive, Ivybridge,
Devon, PL21 9DD
01752 894083
swrep@awgb.co.uk

VOLUNTEERS

Workshop Training

Coordinator

Brian Hensby
Landora, Crewkerne Road
Raymonds Hill, Axminster
EX13 5SX
01297 34115
brianhensby@awgb.co.uk

Youth Training Coordinator

Ron Caddy
Studio 9, The Fairground
Craft & Design Centre
Weyhill, Andover
SP11 0QN
Tel: 07903 313065
Tel: 01264 350323
acorncrafts@tiscali.co.uk

Health and Safety Officer

John Boyne-Aitken
27 Rock Road, Trowbridge,
BA14 0BS
01225 752373
hs@awgb.co.uk

Regional Rep Assistant (South East)

Colin Smith
130 Broad Oak Way,
Stevenage, SG2 8RB
01438 727495
colin_a_smith8@hotmail.com

Vice Chairman's Notes

Dave Atkinson

By the time you read this we will be well into the New Year but Happy New Year anyway. I hope Santa brought you all the new toys you wanted and that you're having fun using them.

Junior Membership:

Following a suggestion from John Smith of Burcot Woodturners the Trustees have decided to raise the top age for Juniors from 18 to 21. This means that if you are under 22 on the 1 January of the membership year (starting in 2017) your membership is free.

It also means, **STARTING FROM NOW**, that all you Young Turners out there (under 22) qualify for Youth Training and entry to the Competitions at this year's Wizardry in Wood.

In terms of Youth Training some of you may be thinking of doing more advanced topics. If so please contact Ron Caddy our Youth Training Co-ordinator and he will see what can be arranged for you.

Wizardry in Wood - Competition Time

Elsewhere in this edition Ray has written about Wizardry in Wood. This is a wonderful opportunity for you to showcase your work by entering one of the competitions.

I am told that in the past the number of entries has been small. So this is your chance to demonstrate to the world just how good you are at woodturning.

One of the difficulties with entering Wizardry is the logistics associated with getting your entry to and from the exhibition.

We've thought about this and we'll be setting up delivery points to which you can post your entry. We'll take your piece to Wizardry and afterwards we will post them back to you at our expense. So you'll only have to post your piece one way. There are a range of tracked courier services available at low cost and of course you can always take it to the Post Office and use Special Delivery or Parcel Force. Both provide insurance and we will insure your piece on the return trip. Neither the WCT nor the AWGB will provide insurance for your piece whilst it is at the exhibition. However, the WCT do provide full security.

We will also be providing a fact sheet about the best way to pack your entry. It will be downloadable from our website.

Please consider entering and let's make this the best Wizardry in Wood ever!



Seminar

This is very much a work in progress. At the moment I can't say anymore but I hope we'll be able to make an announcement after our next Trustee meeting on 12 March. So please keep an eye on the website, on the forum and Facebook for an update.

AGM

As you read this the AGM will almost be upon us. I would encourage all Branch officials to attend the meeting prior to the AGM and the AGM itself. It's not the most exciting of days out but it is your chance to talk to us face to face. I hope you will be able to make it.



UKIWS

You will see elsewhere in this edition an advert for UKIWS which is being held in June. This is a new initiative established by three amateur woodturners and we are pleased to be able to take some of our travelling exhibition to the event. Please give the event your support if you are free that weekend and can get to Coventry. Don't forget to come and say hello to the people manning our stand.

Happy Turning!

Mike Donovan



It is with great sadness that we report the death of Mike Donovan, on 7 January 2016 one-time Vice-Chairman of the AWGB.

He will be sadly missed by all his friends and colleagues at the Heart of England Branch where he was Chairman for several years.

We offer our condolences to his family.

Notice is given that the
ANNUAL GENERAL MEETING
of the

ASSOCIATION OF WOODTURNERS OF GREAT BRITAIN
(A Company limited by Guarantee - Company No. 8135399)
will be held at

Oddington Village Hall, Lower Oddington, Nr. Stow-on-the-Wold, Gloucestershire, GL56 0XD,
on Sunday April 24th 2016, starting at 2.00pm.



Regarding Trustee/Director positions on the Executive:

Sheila Hughes, presently a co-opted General Trustee has volunteered to be elected General Trustee.

The Secretary, having requested nominations for the Regional Representative positions from the Branches in the South-East and Midlands-and-West Regions, has received proposals that Colin Smith replace Brian Partridge and that Ryan Davenport replace Peter Carless as the present incumbents will be standing down at the AGM.

Under Section 324 of the Companies Act 2006 and the Articles, a member is entitled to appoint another person as their proxy to exercise all or any of their rights to attend, speak and vote at the meeting. The appointment of a proxy must be in writing and notified to the Secretary before the meeting.

A Corporate member may nominate a person to attend on their behalf in writing to the Secretary before the meeting.

As usual there will be tables on which to exhibit attendee's work which they are happy to submit for judgment and selection for the Travelling Exhibition coupled with the award of the Chairman's Prize. There will also be tables on which to place tools and the like for sale. Nigel Fleckney will be in attendance with a selection of his fine timbers for sale.

The AGM will be preceded by a meeting of Members and Branch Representatives which will start at 11.00am.

ANNUAL GENERAL MEETING
of the
ASSOCIATION OF WOODTURNERS OF GREAT BRITAIN
(A Company limited by Guarantee - Company No. 8135399)
on Sunday April 24th 2016,
starting at 2.00pm.

Agenda

1. Apologies for absence.
2. Acceptance of the minutes of the 2015 AGM.
3. Matters arising from the minutes of the 2015 AGM.
4. Treasurer's report for year ending 31 December 2015.
5. Chairman's Report.
6. Announcement of the result of ballot for Trustees.
7. Vote on the appointment of Accountants/Auditors for the AWGB.
8. Result of ballot on any resolutions.
9. Any other business.

A Reminder . . .

The AWGB offers members the following benefits

- ❖ Membership of a National Body dedicated to the promotion of woodturning and the interests of all woodturners
- ❖ A training programme offering a range of support to assist members improve their capabilities
- ❖ Grants to cover a range of turning activities including provision of equipment, including loan lathes – see grant scheme below
- ❖ Opportunity to join over 120 active clubs throughout the UK giving fellowship support and advice
- ❖ Quarterly newsletter full of useful and interesting information
- ❖ Discounts at a wide range of suppliers
- ❖ Free listing on the website for members offering demonstrations, tuition, commissions (NB we expect anyone using this service to have the appropriate insurance cover in place)
- ❖ Opportunity to have you website linked on the AWGB website
- ❖ The help and fellowship of both amateur and professional members
- ❖ Opportunity to attend displays of members work at major exhibitions and shows
- ❖ Opportunity to attend a major international seminar every two or three years
- ❖ Opportunity to attend regional demonstrations and activities run by our
- ❖ Support for members from our regional representatives
- ❖ Access to a comprehensive and cost effective insurance scheme for Public Liability and All Risks insurance cover for all clubs

AWGB Course with Stuart Mortimer

Gordon Malan

Six people had registered for this course: Russell Gibbs (AWGB Regional Rep, North), Brian Wrigglesworth and Gordon Malan (Snainton Woodturning Club), Philip Baker (Kent Woodturners' Club), Malcolm Douglas (AWGM Member, Swansea) and Tom Bradbury (West Sussex Woodturners). We had all arranged to stay in local lodgings, and when we arrived in Grateley, we had made our way through the Chelsea tractors and other vehicles blocking most of the approaches to Stuart's home as they dropped off their children at the local school, opposite!



Above, Left to Right: Gordon Malan, Philip Baker, Malcolm Douglas, Brian Wrigglesworth, Stuart Mortimer, Tom Bradbury and Russell Gibbs — before we started work!

We were greeted by Stuart and his wife, Linda and Oscar, their dog, and introduced ourselves. Stuart gave us a quick introduction to the proposed course in his large workshop. Then we relaxed and got to know each other after being invited inside the house to sit round a large dining table to chat and have a mug of tea.



Stuart showed us various twists, and how to mark out, then turn and make a double twist with the centre hollowed out (ie cut through). He also showed us the

many and various options available for filing or removing the wood round each of the spiral twists (ie bines). We each had a lathe and then marked out, turned and made a double twist ourselves, under Stuart's careful guidance as our work progressed.

Marking Out a Spiral Twist

Most of Stuart's work requires careful marking out of the wood. It is first turned to the required spindle thickness ("t"), or other oval or egg-shape for a



hollow-form or finial. For a spindle, mark lines at right angles to the length at a distance "t" apart, then divide each section in half, then in half again. Draw four lines horizontally along the spindle at 90° to each other, labelling each 1, 2, 3 and 4. Then join the corners of boxes 1 & 2, 2 & 3, 3 & 4, and 4 & 1, to create four spirals round the spindle.

Cutting a Spiral Twist

A saw was used to cut along each spiral line as a guide (below), then a round rasp or Microplane® was used to shape the groove, cutting down to a suitable depth. The sharp top-edges were rounded off using



a rasp, special gouge (right) or small hand-plane. A power-driven Saburr tooth® pointed burr was used with care to cut through between each bine (using a gentle stroking motion), which was then shaped so that each bine was the same dimensions. The bines were finished by using strips of Vitex® sandpaper wrapped round each bine: it was pulled in a sawing motion to round off and finally shape each bine, especially inside each twist. This is essentially the same procedure as is used for making other spiral forms.



Other Work

We were then shown how to turn a thin, triple-twist, such as might be found on the stem of a goblet. When we set to work, we all found this to be surprisingly easy, and we soon all had nice-looking triple twists! We broke for lunch in the house and enjoyed the contents of the 'bait boxes' we had brought with us.

Making a spiral hollow-form (right) was then demonstrated by Stuart. He again showed us the various options for cutting the spirals using an Arbortech® or similar cutter, and then hollowing the spiral-cut form. Stuart then demonstrated different methods of refining the shape of the spirals using a small plane, rotating power rasps, or hand-held rasps of various designs. Various aspects of safety and the need for care when using powered equipment were emphasised by Stuart.



We were then set to work to make our own spiral hollow forms. Through lack of care on my part, one of the spiral cuts was too close to the neck of the hollow form and the neck cracked. Stuart immediately took a fresh wood blank, and in 10 minutes, he had turned a spiral hollow form to the same point as I had reached with my first attempt – which had taken me nearly an hour's work! A wonderful demonstration of Stuart's professional expertise!

We broke for more tea, again kindly supplied by Linda, then we were shown round Stuart's gallery of exhibition pieces. All one can say is "Wow! What superb work of an astounding finish and quality." (See examples below).



We worked on until 1700 hr, when we thanked our hosts and made our way to our various overnight lodgings. We learned so much on that first day, that my notes covered several pages – and these were only brief notes!



Day Two

We were shown and then made a spiral hollow form, an egg-shaped spiral finial, and a spiral-twist egg. Finally Stuart showed us how to mark out the quite complicated shape of, and then turn, a pig-tail finial. There was so much skill, training and expertise imparted during the whole course that one could write a book on the subject of marking out then making the various spiral forms that Stuart Mortimer has made his own, and for which he is the renowned expert (Stuart's book on the subject is reportedly now out of print).

Acknowledgements


We are all very grateful to the AWGB for providing this superb course, which gave six of us the opportunity to learn the techniques developed by Stuart Mortimer for making spiral forms of various types. We also had the opportunity to put this training into practice, which was invaluable. We are especially grateful to Stuart and Linda Mortimer for their hospitality and gracious welcome. We especially appreciated Stuart's patient training and the generous imparting of his skills, knowledge and specialist techniques to us novice turners. A great course — very many thanks, Stuart!



Left, Brian Wigglesworth's finished spiral hollow form; 1st in Snainton Club's Christmas Competition

Ashley Iles
woodcarving & turning tools
made in the old tradition

Precision Made Woodturning Tools



Ashley Iles, Solly Street c.1958

Send £1.00* postage for our 49 page Catalogue and 2014 Price List

*£3.00 Mainland Europe and Eire, £4.50 USA and Rest of the World

Ashley Iles (Edge Tools) Ltd, East Kirkby, Spilsby, Lincolnshire PE23 4DD.
Tel: 01790 763372 Fax: 01790 763610
Email: sales@ashleyiles.co.uk
www.ashleyiles.co.uk

**Pepper Mills
Nutmeg Graters
Tools etc.**

**Sole distributor of
Cole & Mason
mechanisms and parts.
UK craft agent for
CrushGrind**

Constable Woodcrafts
Tel/Fax 01206 299400
e-mail: brianfitzs@aol.com
www.peppergrinders.co.uk

Re: Cone and Slope by David Springett

John Peck

As a retired Physics teacher, David Springett's article in December 2015 *Revolutions*, brought back happy memories.

The Cone and Slope trick is partly an optical illusion. The cone seems to be going up a slope but in fact, because of its shape it is going down. This is because at the end of the slope the centre of gravity is lower than it was at the start of the run.

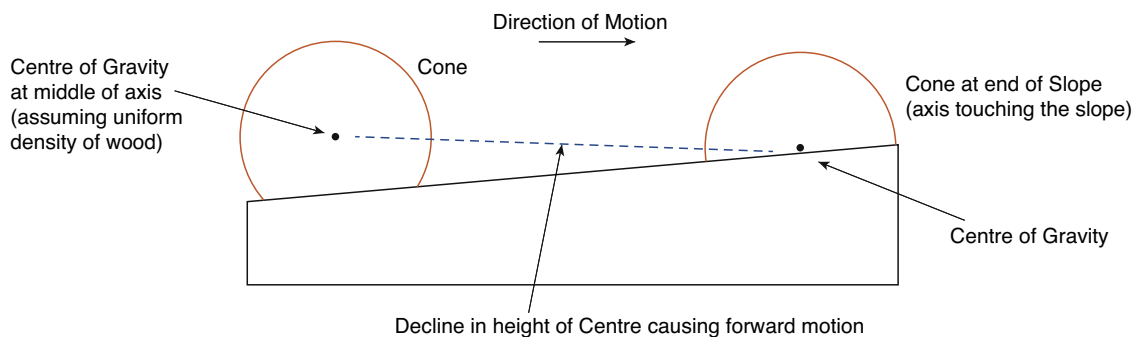
The reason it was not fully explained to David by his teacher was probably because it was too complicated to be explained to a class of children, many of whom were becoming puzzled by the concept of 'centre of gravity'.

29 WHAT IF?

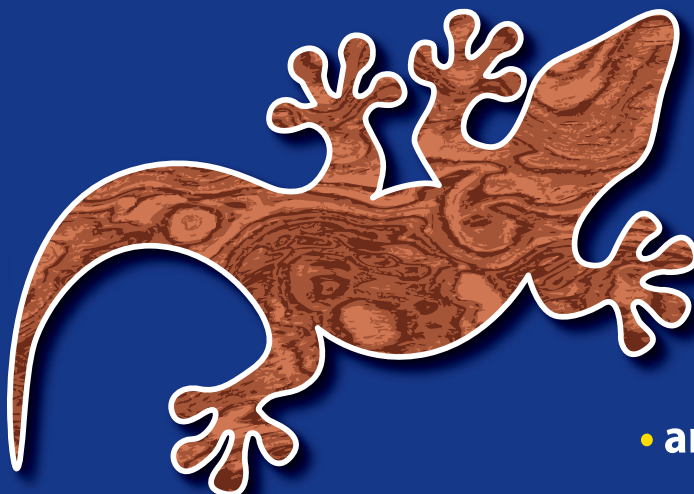
It is necessary for the cone to roll on to the next slope, and to ensure that this happen, each slope has to be thinner than the previous one. The cone will soon touch the table and stop, so you are not going to achieve the ideal of 'perpetual motion'. I used to have a poster on the wall in my study which said, "There is no such thing as a free lunch!"

Three homework questions:

1. What is the maximum angle of slope your turned cone will work on?
2. In theory, what, is the maximum angle a cone would climb, assuming ideal conditions? (answer to the nearest whole degree).
3. What is the efficiency of your turned cone and slope?



Exotic Hardwoods UK Ltd

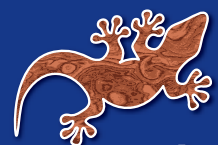


We specialise in supplying quality exotic hardwoods for:

- wood turners
- snooker & pool cue makers
- longbow makers
- guitar & musical instrument makers
- antique furniture restorers

Unit 3 Bowden Hey Road,
Chapel en le Frith, High Peak, SK23 0QZ

Contact us today on 01298 815338
www.exotichardwoodsukltd.com



exotic
hardwoods uk



Didcot and District Woodturners present

Seminar Day with Nick Agar

An opportunity not to be missed, come and learn from Nick

Nick is an international turner, known for his amazing decorative wall art, colouring techniques, airbrushing and turning skills. Come and get some inspiration and watch the master at work.

This demonstration is open to all interested woodturners and woodworkers.

Date: Sunday 10th April 2016

Venue: The Village Hall, High Street, Harwell, OX11 0EX

Time: 10.00 till 4.30 approx

Cost: £15 - bring your own lunch, tea and coffee supplied

To book a place: Sheila Hughes on 07768 373086 or 01635 45930
sheila@ccg4design.co.uk.



AWGB Merchandise

Lapel Badges
Brass & enamel
£3.50 p&p included



Windscreen Sticker
£1 plus sae
(standard letter rate)



Cloth Badges
For sewing on smocks etc.
£4.50 p&p included



Tie
£16.00 p&p included



All available from the AWGB Secretary
(details on page 3)
Make all payments to AWGB

A devilish piece of fun.

David Springett

This puzzle known as 'Jumping frogs', 'Right & left' or 'Hop over' was first developed in the early 1880's. It looks easy, with just six turned pieces dark & light set in holes in a stand. Quite simply they must exchange places – dark move to the holes the light pieces occupy and vice versa. Simple you think, but there are rules:-

1. Each piece can only be moved one space at a time.
2. A piece may jump over ONE other only into a vacant space.
3. The pieces may only be moved forward. (See photo below) Dark towards the left and light towards the right.
4. Once a move has been made it cannot be retracted.



Here's how the pieces were turned.

You will need:-

1. For the pieces, two lengths of hardwood (one dark, one light) each 13.5cm long by 3cm square.
2. For the 'stand'. One piece of planed hardwood 18cm long by 2.5cm wide by 12mm thick.
3. A 2cm diameter sawtooth drill or forstner bit.
4. A roughing gouge & a 9mm gouge.
5. A 3mm wide (approx.) parting tool.
6. A 6mm wide parting tool.
7. A small skew.
8. Polish and Carnuba wax.

When I turned my first 'Jumping frogs' puzzle, some years ago, I turned the 6 pieces, three from Yew and three from Laburnum. At the time it was quite easy to tell them apart but over time they have all become the same dark brown. Choose the two woods carefully so that even after several years there will be a distinct difference. Alternatively the two sets can be turned differently. (See diagram 1)

Set the first hardwood blank between centres and turn the 3cm square down to about 2.4cm diameter. This slightly smaller size means that the pieces will sit comfortably alongside each other in the stand.

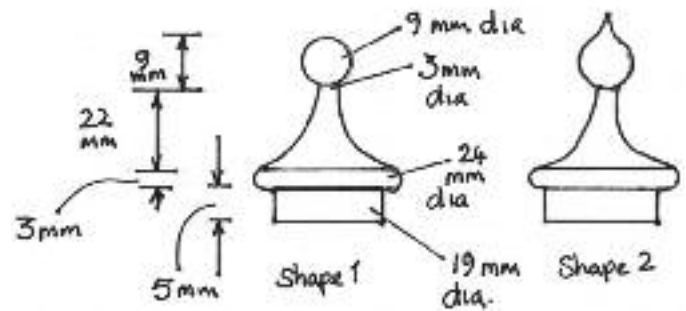


Diagram 1. Dimensions for the pieces and an alternative second shape.

Mark out the blank according to the dimensions shown in diagram 2. At the tailstock end turn the 10mm section down to about 19mm (smaller than the 20mm hole that the sawtooth cutter produces). (Photo 1)



1. Turning the end to 19mm diameter.

Leave the next 3mm section full diameter but round over its 2 edges. Then, using a small gouge turn, from the rounded edge, a curve into the 22mm long section. (Photo 2) Using a parting tool turn the next 20mm section (shaded area in diagram 2) down to 19mm diameter. Sand and polish the turned parts. (Photo 3)



2. Round over the 3mm section.



3. Polish the first part.

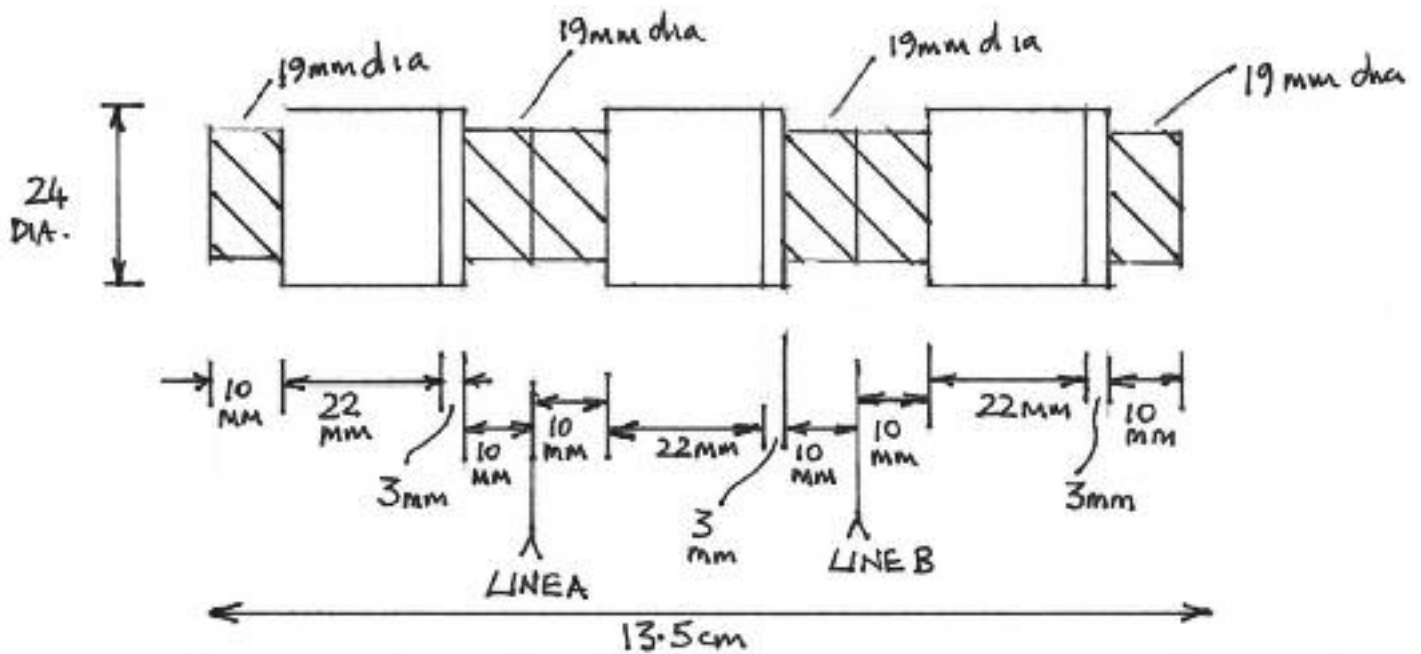


Diagram 2. Marking out the blank.

Remove the blank from the lathe and replace the driving dog with a chuck. The 19mm diameter end can now be held in the chuck and a revolving centre brought up to support the work at the tailstock end.

The remaining shaded areas, shown in diagram 2, can now be turned down to 19mm diameter. The edges of the two marked 3mm sections can be rounded over and from those two rounded over edges turn a curved hollow as before. Sand & polish (Photo 4) These rounded edges need to be worked now for, later when each separate piece is held in the chuck that area closest to the chuck will be difficult if not impossible to safely turn. Remove the part finished piece from the lathe. (Photo 5)



4. The blank partially turned.



5. Removed from the chuck.

Take note of lines A&B on diagram 2. Carefully cut through lines A&B. This will produce 3 identical pieces. (Photo 6)



6. Three identical parts cut.

Take one piece and hold the turned spigot in the chuck. The rounded over 3mm section should be closest to the tailstock. The 19mm diameter, 10mm long end now facing outwards can now be turned down to 5mm long. (Photo 7) It is important to take light cuts to prevent the gouge from 'grabbing' the work and pulling it from the chuck jaws. When satisfied sand and polish the end and remove from the chuck.



7. Turn the exposed end carefully down to 5mm thick.

Reverse the piece in the chuck holding the now 5mm long tenon. At the tailstock end saw off the 10mm long 15mm tenon shown in photo 8. Carefully turn the sawn end clean. (Photo 9)



8. Reversed in the lathe. Now cut away the stub tenon shown here.



9. With light cuts turn the end face.

As the 5mm long tenon, held in the chuck jaws, does not provide the strongest grip support the exposed end with a small piece of waste wood bringing the tailstock (& centre) up for support. I have used a black marker pen to highlight the waste wood.

Use a small gouge to make a sweeping cut from the 3mm rounded shoulder close to the chuck down towards the waste wood. (Photo 10) Continue turning until a 9mm diameter section is turned close to the supporting waste wood. (Photo 11)



10. Waste wood support at the tailstock end whilst making a sweeping cut with a gouge.

Measure 9mm from the end of the work piece (where it is in contact with the waste wood) towards the chuck. On the chuck side of the point turn down, using a thin 3mm parting tool, to 3mm diameter. (Photo 12)



11. The area next to the waste wood support is turned to 9mm diameter.



12. 9mm away from the waste wood support turn down to 3mm diameter.

From the 3mm rounded shoulder close to the chuck. Turn a sweeping curve down to meet this newly cut 3mm diameter section. (Photo 13)



13. Make a sweeping curved cut down to the 3mm diameter section.

Using a small skew round over the left hand shoulder of the 9mm section supported by the waste wood. (Photo 14)



14. Carefully round over one edge of the 9mm diameter top.

Withdraw the tailstock and set aside the waste wood, it will be used again. Take the small skew and round over the now exposed end of the work piece. (Photo 15)



15. Having removed the support the top of the 9mm diameter section can be rounded over.

Sand and polish the finished piece. (Photo 16) I like to bring up a good shine using Carnuba wax to finish off.



16. Polish and give a final buff with carnuba wax.

Repeat the process for the remaining two dark wood pieces and three light wood blanks. (Photo 17)



17. 6 parts complete.

Photo 18 shows the 'stand' with its 7 drilled holes and 6 turned pieces.



18. The 'stand' with its 7 20mm diameter holes.

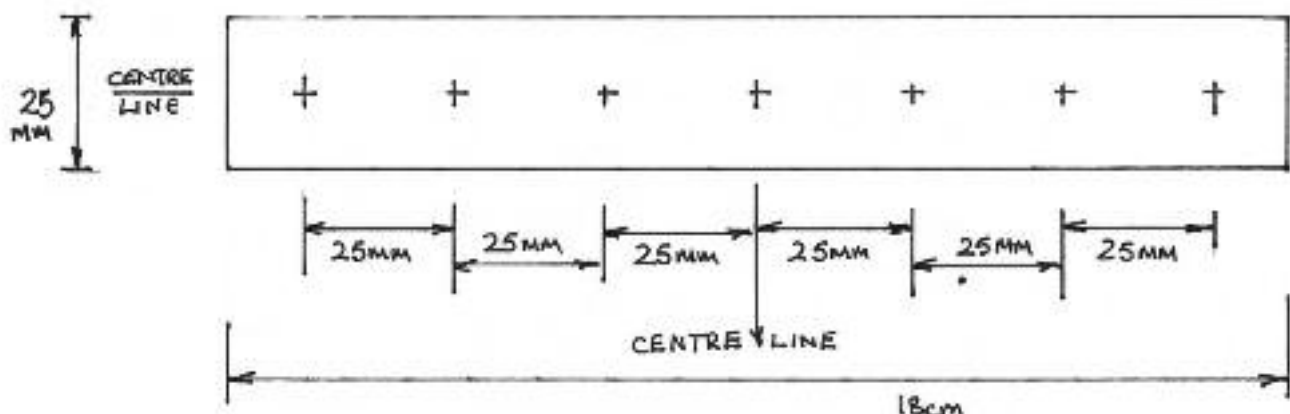
The 'stand' is simple made by drilling 7 20mm diameter holes each 9mm deep in the planed, sanded & polished piece of selected hardwood which is 18cm long by 25mm wide and 12mm thick. Refer to diagram 3.

If you become frustrated trying to solve this puzzle look at photo 19 given as a clue.



19. A clue, if you need it.

Diagram 3. Marking the centres, on the 'stand', for the 20mm drilled holes.



We are now a UK supplier of Hampshire Sheen

Hampshire Sheen

150ml £9.98
250ml £16.99
400ml £22.99

A quietly discerning lustrous polish producing a quintessentially British finish.



I'm Supporting

UKIWs

Coventry, 18th and 19th June 2016

UK & Ireland Woodturning Symposium

www.ukiws.co.uk



We have a large range of blanks



Hope woodturning

Robert Dorby



Olivers Woodturning supports the AWGB



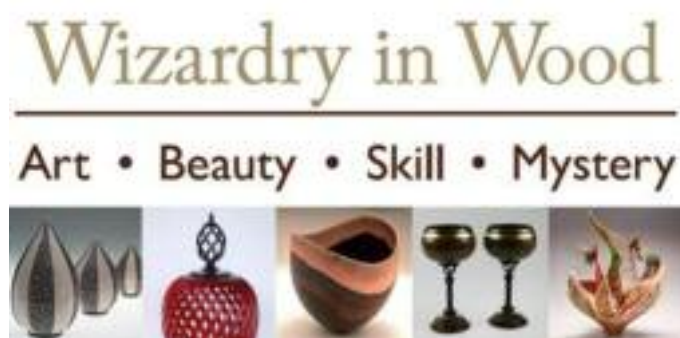
The Association of Woodturners of Great Britain www.awgb.co.uk

Worshipful Company of Turners Competitions 2016

Ray Key



My aim in writing this piece is to cajole and encourage more of you to enter the Worshipful Company of Turners Competitions in 2016. These competitions are held biennial but every fourth year they coincide with Wizardry in Wood. This event is now established as the UK's most significant exhibition and selling event in the woodturning calendar.



The event is held at the impressive Carpenters Hall, Throgmorton Avenue, in the City of London, the competitions are held in the Court Room, the public can view the exhibits for four days from Wednesday October 12th to Saturday October 15th.

Entries are to be at the venue by 11.30am Tuesday October 11th, judging starts at midday.

As well as having your work on display at a prime London venue for four days, you can also offer your entries for sale, a commission of 15% will be deducted, inclusive of any credit card charges.

There are thirteen competitions in total; six of these have significance for AWGB members.

• The Master Competition:

The challenge is for **A pair of (non-pedestal) Lidded Bowls.**

There are **Two Open Classes:** One open class for plain turning and one open class for ornamental turning; *top prize in each section £1250* with significant 2nd and 3rd prizes.*

• Felix Levy Open:

Contemporary work of your choice; *top prize £1250* with significant 2nd and 3rd prizes.*

• WCT Open (themed) 2016:

Theme **'350th Anniversary of The Great Fire of London'**

(With particular emphasis on the spirit of rejuvenation and innovation engendered by that era) (A briefing sheet for ideas will be available) *Top prize £1250*, with significant 2nd and 3rd prizes.*

*** Winning entries of the four £1250 prizes are retained by the Company.**

Some Changes to the AWGB sponsored competitions have been made, monetary value has been increased and young turners age eligibility raised.

The competitions are open, there are no restriction on the type of objects you submit.

- **Seniors:** 1st £250, 2nd £175, 3rd £125 with three runners up prizes of £50 each.

Gold, silver and bronze medals are awarded to the three winners.

Significant vouchers from woodturning supply and tool companies will be also be awarded.

- **Young Turners:** for members of 21 years or younger. (This is a change from Junior, for members of 18 years or younger). 1st £150, 2nd £125, 3rd £75.

Gold, silver and bronze medals are awarded to the winners.

Certificates from the Worshipful Company of Turners will be awarded to all entrants.

Significant vouchers from woodturning supply and tool companies will also be awarded.

• The Ray Key Special Young Turners Competition:

(This is a change from Youth to Young as the age limit has been raised)

This competition is for those who have attended any of the Worshipful Company of Turners and AWGB sponsored Young Turners Training days, and are still eligible, that is 21 years old or younger.

A creative challenge has been set, with wood provision by Ray Key. A Sycamore disc of 17.5cm x 3.5cm approximately.

This sort of wood lends itself to classic fine work and is ideal for colouring, painting, burning, piercing, carving etc, There is nothing to stop you deconstructing and reassembling or adding elements with the proviso the supplied disc remains the dominant force.

Increase to prize money is under review at this time.

The winner is awarded the Geoff Cox Young Turners Trophy.

Significant vouchers from woodturning supply and tool companies will also be awarded.

Certificates from the Worshipful Company of Turners will be awarded to all entrants.

The press deadline has meant that the full information is unavailable at this time.

However I will point you in the direction of the website of the Worshipful Company of Turners www.turnerco.com/2016competitions **complete details are promised to be posted by March 1st.**



I hope this has wetted your appetite for the competitions.

Footnote:

Wizardry in Wood 2016 could be the best yet.

- Kew Gardens Botany Collection will exhibit previously unseen examples in the Main Hall
- Daniel Collection Selected Works
- Livery Wood Groups Display
- WCT Charity Display
- AWGB, SOT and RPT will all have stands
- Demonstrations by young turners
- Individual makers stands
- A 'Collective' stand allows for more invited turners work to be display than in the past.

Keep your eye open as the event nears, the woodworking press and the various websites will be updating and providing further information.

This is an event that should be in your diary and that you plan to attend.

Stiles & Bates
The Woodturning People

Shop Mail Order Catalogue Website

Upper Farm, Church Hill, Sutton, Dover, Kent. CT15 5DF
Tel: 01304 366 360
www.stilesandbates.co.uk
sales@stilesandbates.co.uk

Little Sister Big Performance

Little Sister is a mini hollowing tool based upon the highly successful Brother System 2 range. Designed with the small/mini lathe turner in mind.

Compact fixing screw
Hollow through 13mm
openings with ease!

Tapered Stem
for maximum rigidity

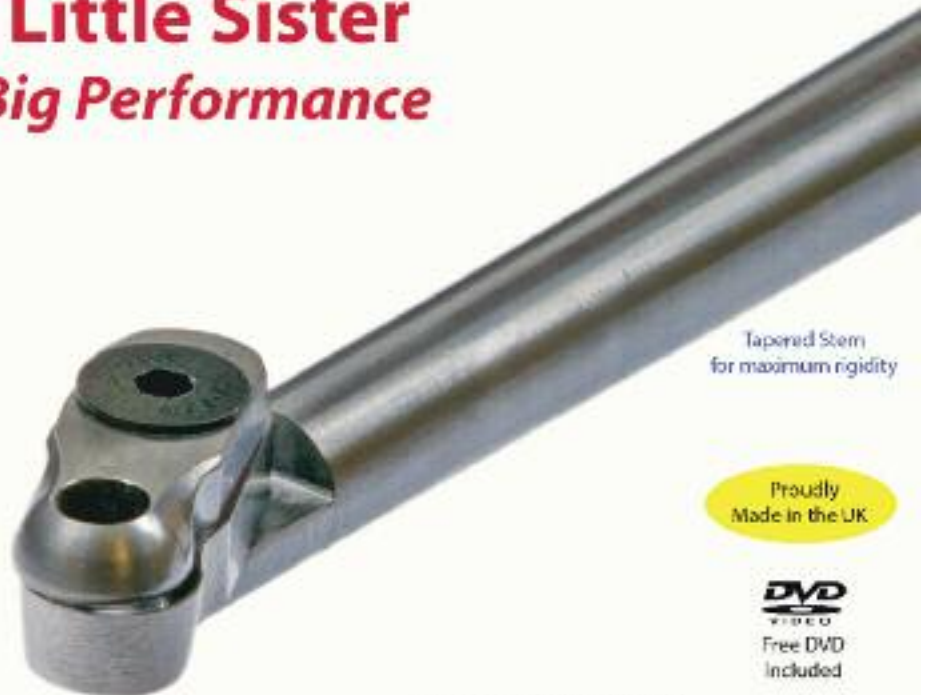
Proudly
Made in the UK

DVD
VIDEO
Free DVD
Included

Talk with your
stockist today

hamlet
CRAFT TOOLS

sales@hamletcrafttools.com
www.hamletcrafttools.com
+44(0)1142321338



3 configurations available



An interchangeable scraper (ref H5182B) also available

Allan Calder's Ltd Sandpaper Supplies

Unit 2B Churnet Works, James Brindley Road,
Leek, Staffordshire ST13 8YH



We are supplying top
quality brands of
sanding abrasives for all
types of wood turners.

www.sandpapersupplies.co.uk

Email: sandpapersupplies@yahoo.co.uk
Tel: 01538 387738

ProEdge Sharpening refined

The Robert Sorby ProEdge offers effortlessly repeatable sharpening every time.

Features and benefits:

- Change belts in seconds
- Flat bevel rather than hollow grind
- Wide range of grits and abrasives
- Belt sharpening lowers risk of overheating
- Sharpen at exactly the same angle every time
- Nine factory indexed settings provide a guide for all types of tool
- Can be locked between indexes for custom settings

Wide range of accessories to suit all sharpening needs



"I really liked the system and recommend it. It was quick and simple to set up and very easy to use. I really believe that my tools were sharper than when sharpened on a wheel."

Joseph M. Hermann, Editor
Woodturning Design

**Woodturning
Design**



Proudly Made in
Sheffield, England
Patent Number: 2400862

Robert Sorby
The Robert Sorby ProEdge: Sharpening made simple

www.robert-sorby.co.uk

Member Training Workshops

Paul Disdle (Norwich Woodturners)

The Norwich Woodturners hosted an AWGB training day on 7th November. These days are open to all AWGB members and places are allocated on a first come first served basis. I was lucky enough to get a place and was joined by four others.

The day was on Decorative Techniques and led by Andy Coates.

Andy provided blanks and access to a myriad of artistic supplies and equipment.

It was amazing to see 5 very different results from the same blank.

The day was very enjoyable and I personally came away with not only an increased knowledge on decorative techniques but also a wealth of other tips.

As well as Andy Coates the 3 Rogers of Norwich Woodturners were there all day and passed on plenty of tips too.

These days are run free of charge and to be honest you are a fool not to try and attend one.



Note from the editor

I have completed my first year and thanks to all who have contributed, encouraged and helped me.

My wishes are the same as last year regarding contributions, the more the merrier. I would love to see all your ramblings and tales, stories and tips, jokes and yarns and anything else you would like to write for me (as long as its suitable for publication of course).

Don't forget to include photographs, illustrations and any supporting materials if applicable.

I hope to see lots of you at the AGM in Oddington, Gloucestershire April 24th, don't forget to bring along your work to show off, there are prizes available.

I look forward to receiving your comments and articles. Happy turning, **Sheila**



Turn East 2016



The 13th East of England Woodturning Seminar

**Saturday 20th August 2016
At Fakenham High School, Fields Lane, Fakenham. Norfolk
9.20 till 16.45**

**Admission will be by ticket only at the price of £30.00
which includes a buffet lunch, teas & coffee.**

We have lined up a team of first class turners to demonstrate for us

Paul Hannaby, Margaret Garrod, Andrew Hall & Jason Smith

In addition we hope to have a range of trade stands together with an exhibition of members and delegates work.

As we will only have a limited number of spaces available, early application is recommended to what we believe will be a first class event.

Application form and further details are available from:-
.Bernard Rose, 63, Belmore Road, Thorpe St. Andrew, Norwich. NR7 0PR
Tel: 01603 436990 or email bandm.rose@tiscali.co.uk

**Turn East 2016 is a one day Bi-Annual Regional Seminar
Organized by the**

Norfolk Woodturners Society



Southwest Area News

John Montgomery - South West Rep

Demonstrator Training and
Tutor Assessment Co-ordinator
johnmontgomery@awgb.co.uk

Winter in the South West has not been too bad when compared to the rest of the country. Club meetings have not been affected to a great extent and it tends to be the time when most of us turn, before we have to start on house repairs and gardening to keep the household happy.

Since the last issue of Revolutions I have visited a couple of clubs local to me. I was also invited by Burnham Woodturners to attend their meeting, which I did on the 12th December. My thanks to their chairman, George Foweraker, and all of the members for making me very welcome, it was a most enjoyable day.

We are getting towards the time when the shows start. I will be attending Yandles Show at Martock in April for the Association, showing the excellent travelling exhibition of works selected at the Seminar last year. I look forward to meeting a lot of members who attend the show.

It is also good to see that there is a new Woodworking Show being held at Westpoint in Exeter, Devon on 29th and 30th October. Called Woodworking West & Power Tool Show, it is the first to be held at the venue since the excellent Axminster Power Tool Shows that ceased a number of years ago now.

Over the next year while on my travels, I hope to call in on some more clubs in my area and meet up with the members.

Happy Turning

Demonstrator Training and Tutor Assessment News

The Demonstrator Training Courses have continued to be successful and I have just sent out to all those taking part in the Derby course being held on 20th February. At the time of writing this I am happy to say that all that have applied have been allocated a course. I thank those who have waited a number of months while I get the numbers to run a course. But to date the longest has been 15 months, and that was the first Scottish course.

The Tutor Assessments have now been opened to all members and since the end of November I have received 20 applications. So far 3 Assessment days have been set up with 4 members being assessed each day. I am at present setting up a further Assessment day in East Devon for which we have members.

I am looking to set up an Assessment days in Cornwall and Southwest Devon, Kent, Suffolk, Lincs, Forfar and Galloway. If there are any members in these areas that would like to be assessed please send me your applications, as I already have others in these areas wishing to attend.

All Assessments are given a time slot but you do need to make sure you have completed the 'Let's Teach Turning' course that is online or DVD.



W.L. West & Sons Ltd
Selham, Petworth, GU28 0PJ
t: 01798 861611 f: 01798 861633

- Hardwoods
- Wood finishes
- Australian Burrs
- Exotic Timbers
- Woodturning Blanks
- Woodturning Courses (see website for dates)
- Woodworking Machinery
- Woodworking Tools
- Fencing, Gate & Decking Products
- Bespoke Garden Furniture


**Timber, Tools & Machinery
for D.I.Y • Carving
Woodturning • Furniture Projects**
shop@wlwest.co.uk

Off A272 Midhurst to Petworth road opp The Halfway Bridge Inn




RECORD POWER
WOODWORKING TOOLS & MACHINERY

Open: Mon-Fri 8-5 & Sat 9.00-1.00pm
www.wlwest.co.uk



CHESTNUT
PRODUCTS
first for finishes

- Cellulose Sanding Sealer
- Finishing Oil
- Lemon Oil
- Acrylic Gloss Lacquer
- Acrylic Sanding Sealer
- Safety Cloth
- Spirit Stain
- Acrylic Lacquer
- Burnishing Cream
- Cellulose Thinners
- End Seal
- Friction Polish
- French Polish
- Melamine Lacquer
- Wood Wax 22
- Steel Wool
- Polishing Brushes
- Shellac Sanding Sealer



Used by woodturners of all abilities throughout the UK and the world, the Chestnut Products range of top quality finishes gives outstanding results every time; whatever you are making and whatever your preferred finishing system there is bound to be something in our range to meet your needs.

See your local stockist for more information or for a catalogue/price list contact us at:

Chestnut Products
PO Box 536,
Ipswich IP4 5WN
Tel: 01473 425 878 Fax: 01473 431 096
www.chestnutproducts.co.uk
mailroom@chestnutproducts.co.uk
Stockist enquiries welcome

Symposium to Take UK and Ireland Woodturning to New Social Levels.



Saturday and Sunday 18th and 19th of June this year will see the UK's newest exclusively woodturning event at the Hilton Hotel in Coventry, organised by three amateur turners.



Mike Waldt, Martin Saban-Smith and Steve Twydell took social media by storm last October with an announcement that quickly spread across YouTube, Facebook and Twitter - they were going to organise and host a two day woodturning symposium in Coventry in June.

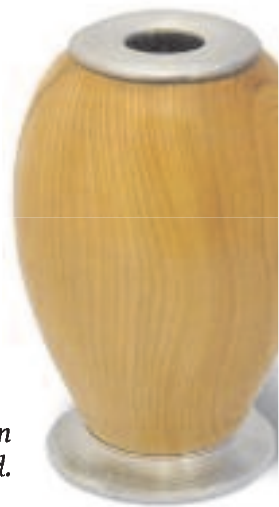
Some said they couldn't do it. But three months down the line, more than half the 800 entry tickets have been sold, and with the team's passion and drive for turning, they are pleased to have secured pro demonstrators, trade sponsors and a fabulous venue to host the event.

Oliver's Woodturning, Taylor's Mirfield, Hampshire Sheen and the UK's best known turning supplier, Axminster are the main sponsors for the event and other trade supporters will provide visitors with a plethora of turning goods across the weekend. UKIWS organiser Mike Waldt said *"The original idea was to have a few turners meet for a pie and a pint. To see it grow into this is truly amazing! I can't thank the sponsors and supporters enough."*

On the demonstrations, Steve Twydell said *"There are Master Classes being held during the event too by John Aitken, Philip Greenwood and Gregory Moreton from the UK and Robert O'Connor and Matt Jones from Ireland."*

They will also presenting free public demonstrations. All are bound to be popular."

"There are also free demonstrations by the pros, some of the UK's most prolific social media turners and even the possibility of a demonstration streamed live from America."



AWGB to be Involved

The AWGB recently offered their support for the event too, further enhancing the public profile of UKIWS. *"The presence of the AWGB at UKIWS is brilliant,"* says Martin. *"We will be able to promote each other and help spread the word on this amazing craft."*

UKIWS is offering discounts to AWGB clubs too. *"Club secretaries can claim a special discount code for their members to get 10% off their UKIWS entry cost,"* Martin says *"Clubs can register on the website and they will be sent their special discount code, valid for ticket orders until 31st March."*

Investing in the Future

Operating entirely as a non-profit event, the UKIWS organisers plan to invest any funds left after the event into worthy woodturning causes across the UK and Ireland, reaching people of all ages and abilities.

To follow what is happening and to receive regular updates, find the Facebook page at www.facebook.com/ukiws where you can join the mailing list to receive updates straight to your inbox.



UKIWS is Sponsored by



Entry to the event is strictly by ticket only and these can be booked online at **www.ukiws.co.uk**. A one day entry ticket to the event costs just £15.00 (Master Classes extra). See the site for many more details, the timetable, trade sponsors and the Master Classes too.

Norwich Woodturners invite you to a day with AWGB President Ray Key BEM.

The venue is at Sprowston Senior Citizens Club, Norwich.

Date is June 18th 2016

Time is 09.30-16.30pm

Cost is £15.00 including a buffet lunch. Ticket only.

Contact for tickets is Roger Rout on 01508-480278

or Roger Groom on 01603-423336

Website is www.norwichwoodturners.co.uk for location and interest.



East Of England Demonstration List - 2016

I have now put together as much information as I can relating to club demonstrations (who/when/where) for all the clubs across the south and east of England. I have a simple definition of the area covered by my initial list, it is "all the orange clubs on the AWGB map".

At the time of writing this there are a small number of clubs from whom I have not received a 2016 program, but hopefully that will be remedied by the time this piece is published. If not, I can at least say "I tried". Also, if demand is shown, I will extend the facility to cover the other coloured regions shown on the AWGB map.

I am always happy to update and re-issue the list, which can be down-loaded from my web site at www.wood-be-nice.co.uk/about_jon.html, and I am happy to take requests from people that would like to have the list emailed to them whenever it changes. Similarly, if any individual is not happy with their information being publicised in this way, they only need to let me know, and it will be removed.

It would be really good if club secretaries kept me up to date regarding program changes or events that they want advertising. Who knows, if I get the information, I could make it a regular, annual feature.

Jon Simpson, 10 Broad Reaches, Ludham NR29 5PD.
01692 678959 / 07818 445308
jonandbron@gmail.com

PRODESIGN *The Thinking Woodturner's Smock!*



All sizes 32" - 58" £36.00 inc VAT

The ToolPost

Unit 7 Hawksworth, Southmead Industrial Park
Didcot, Oxfordshire. OX11 7HR

www.toolpost.co.uk 01235 511101
sharing expertise



Member Training Workshops

'Special Two Day Course' Stuart Mortimer

Hope Cottage, Grateley, Hampshire
SP11 8JT

Wed 6th & Thurs 7th July 2016

Intermediate / Advanced
Spiral Twists

Andrew Hall

5 Well Bank, Billy Row, Crook
County Durham DL15 9SP

Saturday 16th July 2016

Intermediate/Advanced
Small Hats

Mark Hancock

29 New Bridge Rd, Tiptree,
Essex CO5 0HS

Wednesday 10th August 2016

Intermediate
Log to Bowl; Green Woodturning

Mark Hancock

Unit 365, Springhill, Salters Lane, Lower
Moor, Pershore, Worcestershire WR10 2PE

Saturday 29th October 2016

Intermediate/Advanced
Techniques of Hollowing a Closed Form

Jay Heryet

Croesyceiliog Community Education
Centre, The Highway, Cwmbran,
Torfaen, NP44 2HF

Saturday 19th November 2016

Intermediate
Thread-Chasing

**Applications for Members Training workshops to
Brian Hensby – e-mail: brianhensby@awgb.co.uk or phone: 01297 34115
Visit the AWGB website www.awgb.co.uk**

Want a workshop in your area?

**Let us know what you want
and we will try to arrange it.**

There is scope for more workshops for 2016, therefore if you have a preference for any particular technique with a professional woodturner, or you know of a venue in your area that could host a Member Training Workshop contact Brian Hensby and he will try to arrange a workshop to suit your requirements.

Workshops are a 'free member benefit', however candidates have a no obligation option to make a donation to the Development Fund.

For application forms, details of dates and venues visit www.awgb.co.uk

Or contact:

**Brian Hensby - Tel No 01297 34115
e-mail brianhensby@awgb.co.uk**

Approved Tutor Assessments

Following the launch of the 'Lets Teach Turning' e-learning course, we are now taking applications for those who have completed the course and wish to attend an assessment day.



For application forms and information visit
www.awgb.co.uk

Or contact:

**John Montgomery - 01752 894083
e-mail johnmontgomery@awgb.co.uk**

**Association of
Woodturners**
of Great Britain



**Association of
Woodturners**
of Great Britain



Development and Training

Youth Training Workshops

Stuart Mortimer

Hope Cottage, Grateley, Hampshire SP11 8JT

26th – 28th August 2016

Workshop Health & Safety
Various Projects and techniques

Applications for Youth Training Workshops to

Ron Caddy e-mail: acorncrafts@tiscali.co.uk Tel no: 07903 313065

or visit the AWGB website: www.awgb.co.uk

Instructor Training

'Let's Teach Turning' Course

We have designed and written the "Let's Teach Turning" e-learning course to give turners who give tuition some assistance in teaching the basics of woodturning at training workshops, club events such as hands on evenings or taster sessions at Scout jamborees.

The course takes around 2.5 hours to complete and we expect people to do it in stages over a few days or even longer. The e-learning CD will be a useful reference to revisit time and time again.

On completion of the self paced course, AWGB members have the opportunity to attend an assessment day where their teaching abilities

will be assessed and if successful they will be awarded the AWGB Approved Tutor badge. Completion of the course is a pre-requisite to attending the assessment day.

Assessment days will be arranged by demand with dates announced on the website and future editions of Revolutions. The assessment will take approximately 1 hour, and candidates will be required to deliver a lesson, followed by feedback with a question and answer session.

The course is designed for use on a Windows PC, and you can download the e-learning course

on the AWGB website for free or purchase a copy of the CD for £16 including postage.

For further information, please contact the Development and Training Officer. Contact details are on the inside of the front cover.



Beer and Woodturning

Keith Fenton

The Forest of Dean Woodturning Club was formed in September 2003 following the Loughborough Seminar that year. Dick Webb took the initiative to place an advert in the local press and see if there was sufficient local interest to enable a club to be formed. The first meeting was held in the upstairs sales floor of Toolite in Mitcheldean and was attended by around eight potential members. A committee was formed and as they say, the rest was history. The club moved first into Lee village hall and then subsequently to Weston Under Penyard village hall, where it meets currently on the third Wednesday of the month. With around twenty five members the club is thriving and has a full and active programme, having welcomed demonstrators from as far afield as New Zealand and Hampshire.

Beer Pump Handles for Hillside Brewery

The club attended a Fire and Wood summer event in May at our local Dean Heritage Centre and Jeff Stanford got talking to the Director of a local brewery.

The brewery thought it would be a good idea if the woodturning club could make some beer pump handles. Paul Williamson, the Director of Hillside Brewery thought that the standard pump handles were boring and bland, and that wood was likely to produce a handle more in keeping with their artisan type beers.

This was introduced as a project at our next monthly meeting and several members took up the challenge.

A brewery visit was organised to confirm dimensions and any other requirements, and the challenge was made even more interesting by the brewery promising prizes of local ales for the best handles.

Having got the full specifications, handles were produced to individual members designs in many workshops across the Forest of Dean, and a date arranged for us to visit the brewery for a combined social evening and competition judging.

It must be said in fairness, that as expected, the attraction of a free Brewery tour and free bottles of

local ale had little appeal to the members, but despite this, back up drivers were recruited to ensure everyone stayed safe and were driven home within the law!

A number of our members attended the event at the brewery with a total of eleven handles entered in the competition.

The brewery team were suitably impressed with our efforts, and appeared to have some difficulty in selecting what they thought were the top three. They eventually selected their favourites (shown in the picture, 1st on the left, then 2nd and 3rd). Prizes of a case of 12 half litre bottles of beer were awarded for each of these handles, and every other handle won 6 bottles.



The brewery now have all the handles and will use them in their own bar and supply them to their customers bars to support their local ales. First prize was taken by John Birkett who accepted the case of beer graciously.

The judging was followed by a tour around the brewery, which was most interesting, and the evening culminated with a free beer for all attendees.

This was an interesting challenge for those involved, especially challenging was holding the handle on the lathe to finish it off. One member John Birkett used a Doughnut Chuck made from a design in Doc Green's excellent book "Fixtures and Chucks for Woodturning" and this proved most effective in allowing free access to the handle ends.

Who would have thought that woodturning and beer drinking are so closely related? Cheers!



Double Ended Bowl Gouges

Perfect with our Multi Handles

Proudly
Made in the UK



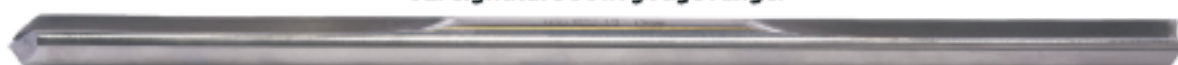
**Fingernail
Profile**

For the woodturner who wants more for less
-and who doesn't-
these superb bowl gouges from premium
toolmaker Henry Taylor are the perfect answer.
Offering two alternative grinding styles -one
on each end. These Sheffield-made gouges
offer maximum versatility when paired with a
system handle such as our new **Multi-Handles**.
Available in 1/4", 3/8" and 1/2" flutes from only
£41.94 - talk with your favourite stockist.



**Standard
Profile**

For the advanced turner we also offer these tools
featuring the special grinds developed by renowned
Irish woodturner **Glenn Lucas**, and which also feature in
our signature bowl gouge range.



hamlet
CRAFT TOOLS

Hamlet Craft Tools
www.hamletcrafttools.com
sales@hamletcrafttools.com
+44(0)114 232 1338

Available through
Henry Taylor
and
Hamlet Craft Tools
stockists worldwide



Henry Taylor (Tools) Limited
www.henrytaylortools.co.uk
sales@henrytaylortools.co.uk
+44(0)114 234 0282

At last, an affordable Multi-Handle

Now available from your **Henry Taylor** or **Hamlet** stockist

4 sizes to cater for your needs - 9", 13", 17" & 24"

Henry Taylor (Tools) Limited
www.henrytaylortools.co.uk
sales@henrytaylortools.co.uk
+44(0)114 234 0282



hamlet
CRAFT TOOLS

Hamlet Craft Tools
www.hamletcrafttools.com
sales@hamletcrafttools.com
+44(0)114 232 1338

Radial clamping of tool
Simple but effective

Textured handle grip
Safe and secure



Proudly
made in UK

Ideal to use with our double ended gouges